

VIVA
HOLIDAYS

VICTORIA & TASMANIA



2026-2027



EXPERIENCE VICTORIA & TASMANIA WITH VIVA HOLIDAYS!

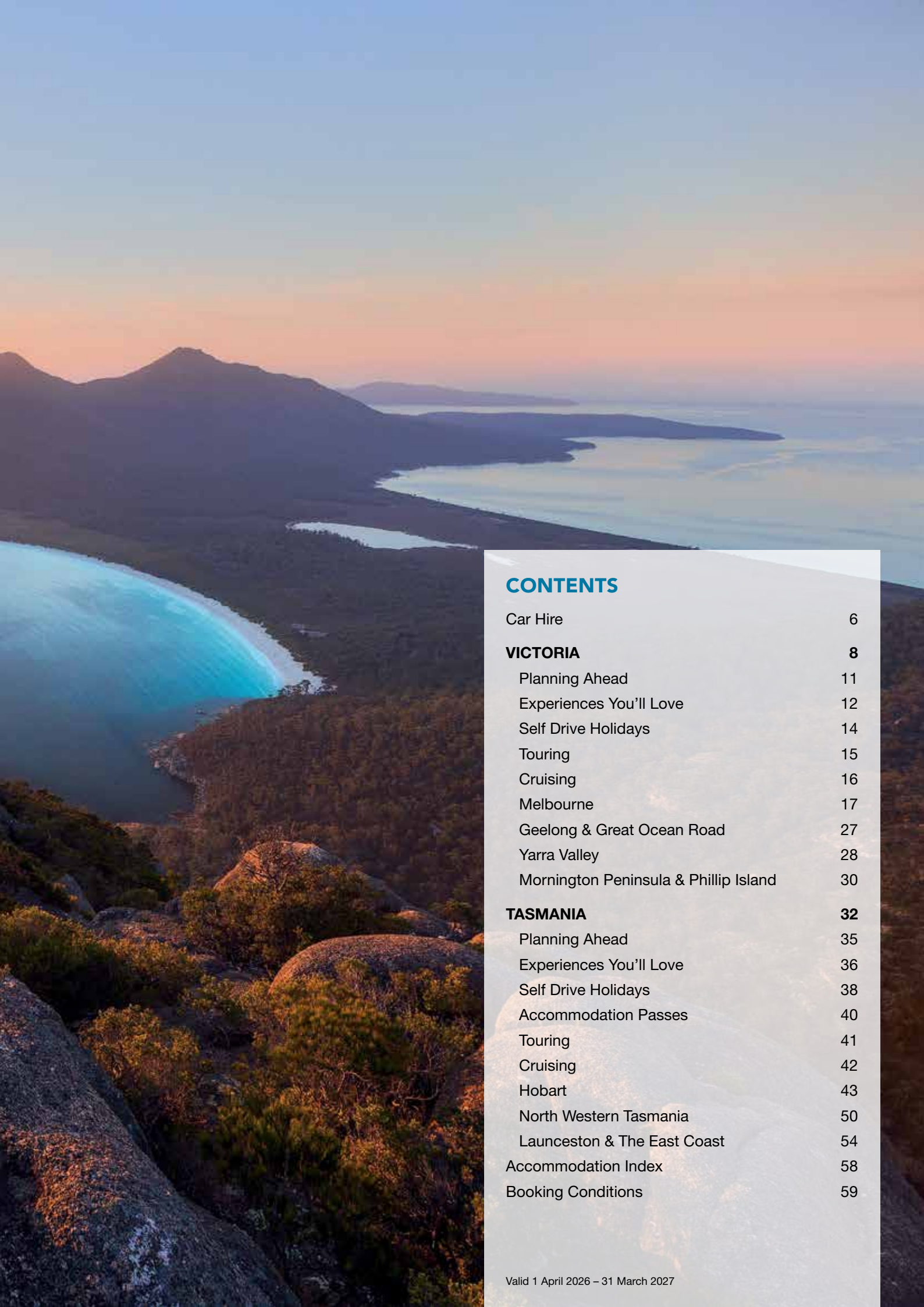
From world-class shopping to iconic coastal drives, Victoria has it all. Discover Melbourne's historic laneways and arcades, lined with trendy cafés, secluded bars and stylish boutiques. Head out of the city and encounter the natural beauty of the Great Ocean Road or marvel at the world-renowned Penguin Parade at Phillip Island.

Head to the Apple Isle and cruise the Gordon River, walk the Bay of Fires or sip a glass of Tassie's finest whisky. Whether hiking around Cradle Mountain, sailing the pristine waters of Wineglass Bay or sampling the gourmet delights of Bruny Island, there's something for everyone in Tasmania.

With over 50 years of experience in the travel business, trust us to make your dream Victoria and Tasmania holiday a reality.

CHOOSE VIVA HOLIDAYS AND LIVE A LIFE OF TRAVEL.





CONTENTS

Car Hire	6
VICTORIA	8
Planning Ahead	11
Experiences You'll Love	12
Self Drive Holidays	14
Touring	15
Cruising	16
Melbourne	17
Geelong & Great Ocean Road	27
Yarra Valley	28
Mornington Peninsula & Phillip Island	30
TASMANIA	32
Planning Ahead	35
Experiences You'll Love	36
Self Drive Holidays	38
Accommodation Passes	40
Touring	41
Cruising	42
Hobart	43
North Western Tasmania	50
Launceston & The East Coast	54
Accommodation Index	58
Booking Conditions	59

WHY CHOOSE VIVA HOLIDAYS

Viva Holidays has been creating exceptional worldwide holiday experiences for over 50 years. Your arrangements will be managed by our local travel specialists who are experts in designing holidays to perfectly suit your travel needs. You'll always be in experienced hands when you book with Viva Holidays.

MORE CHOICE

Our exclusive product range caters for every type of holiday. Accommodation, car hire, theme parks, attractions, day and extended tours, rail and cruises – we've got it covered.

With incredible deals available throughout the year, make sure you ask your travel agent for our best offers.

EXCEPTIONAL SERVICE

Exceptional customer service is behind everything we do. That's why we were recognised as the Most Outstanding Wholesaler – Product/Service in 2023 and 2024 at the National Travel Industry Awards. Our Australian-based team are passionate about travel and providing outstanding service. Let us do the research, planning and booking to ensure your holiday is one you'll always remember.



PEACE OF MIND

Viva Holidays is a proud member of ATIA Accreditation, the Australian Travel Industry Association's accreditation scheme that sets the benchmark of quality for the travel industry. When you book your holiday with Viva Holidays, you will have peace of mind knowing that you are booking with one of Australia's most trusted travel companies.

24/7 ASSISTANCE

When you book with Viva Holidays, you'll never be on your own. In the event of unforeseen circumstances, our customer care team is available 24 hours a day, seven days a week.

TAILOR MADE HOLIDAYS

Whether it's driving along Victoria's Great Ocean Road, cruising the pristine waters of the Gordon River in Tasmania or sampling wines from cellar doors, our team of travel specialists can design a custom made itinerary just for you!

Let us create your dream holiday today.

LIVE A LIFE OF TRAVEL. LET VIVA HOLIDAYS TAKE YOU THERE!





CAR HIRE



AVIS

Why not add Avis to your travel plans and make the most of your holiday by enjoying the flexibility and convenience that an Avis car rental provides.

Situated at all major airport and city locations and offering a wide range of late model vehicles to choose from, all at great rates, renting with Avis is sure to make your holiday escape more enjoyable. All Avis vehicles are air-conditioned and come with Mechanical Breakdown Assistance. Plus you get unlimited kilometres in Metropolitan and Country areas as well as free maps to help you find your destination.

Includes:

- Loss Damage Waiver
- Administration Fee
- Vehicle Registration Fee
- GST
- Concession Recovery Fee/Premium Location Surcharge
- Excess Reduction (Zero Excess option)
- All vehicles include: air-conditioning, ABS and dual airbags

Car rentals commencing in Metropolitan and Country locations include unlimited kilometres. Rentals commencing in Remote locations include 100 kilometres per day with excess kilometres charged at 27.5c per kilometre.

Does Not Include:

- Excess Reduction (Basic Excess option)
- Fuel
- One way rental fees
- Tolls

Excess:

An excess of \$5,900* applies to vehicle Groups C, D, S, and K, while Groups W, H, and V carry a standard excess of \$6,500*. To reduce your liability, optional Excess Reduction is available for an additional fee of \$36.90* per day for Groups C, D, S, and K, lowering the excess to \$1,000*, or \$39.21* per day for Groups W, H, and V, reducing the excess to \$1,500*. For complete coverage, a Zero Excess option is also available, eliminating the excess entirely. All prices above include administration fees, credit card surcharges, and GST, and are subject to Avis Rental Terms and Conditions.

Restricted Access:

Vehicles may not be driven above the snow line in both Tasmania and Victoria (Jun – Sep). Vehicles rented in Tasmania may not be taken to the Mainland and vice versa. Vehicles may be taken to Bruny Island (conditions apply).

Based on per vehicle per day (24 hour hire period). Minimum age restrictions apply. A full driver's licence, credit card and security bond is required on collection. Additional driver fees apply. Vehicles are subject to availability and a similar vehicle to those pictured may be substituted. Not all vehicles are available at all locations. Check with your travel agent for details.



Small Suitcase Large Suitcase

TOYOTA COROLLA HATCH (or similar)

GROUP C

- Auto
- 5 door hatch
- 4 cylinder
- USB
- Bluetooth
- Cruise control
- Reversing camera



	1 1	2	BASIC EXCESS			ZERO EXCESS		
			1-3 DAYS	4-6 DAYS	7+ DAYS	1-3 DAYS	4-6 DAYS	7+ DAYS
DOWNTOWN			\$88*	\$82*	\$76*	\$120*	\$113*	\$107*
AIRPORT			\$110*	\$102*	\$94*	\$142*	\$134*	\$126*

TOYOTA COROLLA SEDAN (or similar)

GROUP D

- Auto
- 5 door sedan
- 4 cylinder
- USB • Bluetooth
- Smart cruise control
- Reversing camera
- Smartphone connectivity



	1 1	1	BASIC EXCESS			ZERO EXCESS		
			1-3 DAYS	4-6 DAYS	7+ DAYS	1-3 DAYS	4-6 DAYS	7+ DAYS
DOWNTOWN			\$98*	\$87*	\$84*	\$130*	\$119*	\$116*
AIRPORT			\$123*	\$109*	\$105*	\$154*	\$141*	\$137*

TOYOTA CH-R (or similar)

GROUP S

- Auto
- 5 door SUV
- 4 cylinder
- USB • Bluetooth
- Smart cruise control
- Reversing camera
- Smartphone connectivity



	1 1	2	BASIC EXCESS			ZERO EXCESS		
			1-3 DAYS	4-6 DAYS	7+ DAYS	1-3 DAYS	4-6 DAYS	7+ DAYS
DOWNTOWN			\$98*	\$87*	\$84*	\$130*	\$119*	\$116*
AIRPORT			\$123*	\$109*	\$105*	\$154*	\$141*	\$137*

KIA SPORTAGE (or similar)

GROUP K

- Auto
- 5 door SUV
- 4 cylinder
- USB • Bluetooth
- Smart cruise control
- Reversing camera
- Smartphone connectivity



	2 2	2	BASIC EXCESS			ZERO EXCESS		
			1-3 DAYS	4-6 DAYS	7+ DAYS	1-3 DAYS	4-6 DAYS	7+ DAYS
DOWNTOWN			\$107*	\$101*	\$92*	\$138*	\$132*	\$123*
AIRPORT			\$134*	\$126*	\$115*	\$165*	\$157*	\$147*

KIA CARNIVAL (or similar)

GROUP V

- Auto
- 5 door SUV
- 4 cylinder
- USB • Bluetooth
- Smart cruise control
- Reversing camera
- Smartphone connectivity



	2 2	2	BASIC EXCESS			ZERO EXCESS		
			1-3 DAYS	4-6 DAYS	7+ DAYS	1-3 DAYS	4-6 DAYS	7+ DAYS
DOWNTOWN			\$138*	\$123*	\$118*	\$168*	\$154*	\$149*
AIRPORT			\$172*	\$153*	\$147*	\$203*	\$184*	\$178*

TOYOTA KLUGER (or similar)

GROUP H

- Auto
- 5 door SUV
- 4/6 cylinder
- USB • Bluetooth
- Smart cruise control
- Reversing camera
- Smartphone connectivity



	2 2	2	BASIC EXCESS			ZERO EXCESS		
			1-3 DAYS	4-6 DAYS	7+ DAYS	1-3 DAYS	4-6 DAYS	7+ DAYS
DOWNTOWN			\$140*	\$135*	\$127*	\$199*	\$194*	\$187*
AIRPORT			\$175*	\$168*	\$159*	\$234*	\$228*	\$219*

TOYOTA PRADO (or similar)

GROUP W

- Auto
- 5 door 4WD
- 4/6 cylinder
- Cruise control
- Reversing camera
- Smartphone connectivity



	2 2	2	BASIC EXCESS			ZERO EXCESS		
			1-3 DAYS	4-6 DAYS	7+ DAYS	1-3 DAYS	4-6 DAYS	7+ DAYS
DOWNTOWN			\$177*	\$159*	\$152*	\$236*	\$218*	\$211*
AIRPORT			\$221*	\$198*	\$190*	\$280*	\$257*	\$249*



BUDGET

Budget Rent a Car is renowned for meticulously maintained vehicles and quality service. Offering a wide range of cars, 4WDs and minivans Budget has the right vehicle choice for your holiday needs.

Budget's car hire fleet is constantly being updated to ensure you enjoy the best in comfort and safety in late model vehicles and at competitive prices. Driving is one of the best ways to see the sights of Australia, and Budget offers customers the convenience of having locations at airports and cities Australia-wide so you are never far from a pick-up point or friendly service.

Includes:

- Loss Damage Waiver
- Administration Fee
- Vehicle Registration Fee
- GST
- Concession Recovery Fee/Premium Location Surcharge
- Excess Reduction (Zero Excess option)
- All vehicles include: air-conditioning, ABS and six airbags

Car rentals commencing in Metropolitan and Country locations include unlimited kilometres. Rentals commencing in Remote locations include 100 kilometres per day with excess kilometres charged at 27.5c per kilometre.

Does Not Include:

- Excess Reduction (Basic Excess option)
- Fuel
- One way rental fees
- Tolls

Excess:

An excess of \$5,900* applies to vehicle Groups C, D, S, and K, while Groups W, H, and V carry a standard excess of \$6,500*. To reduce your liability, optional Excess Reduction is available for an additional fee of \$36.90* per day for Groups C, D, S, and K, lowering the excess to \$1,000*, or \$39.21* per day for Groups W, H, and V, reducing the excess to \$1,500*. For complete coverage, a Zero Excess option is also available, eliminating the excess entirely. All prices above include administration fees, credit card surcharges, and GST, and are subject to Budget Rental Terms and Conditions.

Restricted Access:

Vehicles may not be driven above the snow line in both Tasmania and Victoria (Jun – Sep). Vehicles rented in Tasmania may not be taken to the Mainland and vice versa. Vehicles may be taken to Bruny Island (conditions apply).

Based on per vehicle per day (24 hour hire period). Minimum age restrictions apply. A full driver's licence, credit card and security bond is required on collection. Additional driver fees apply. Vehicles are subject to availability and a similar vehicle to those pictured may be substituted. Not all vehicles are available at all locations. Check with your travel agent for details.



Small Suitcase Large Suitcase

KIA CERATO S HATCH (or similar)

GROUP C

- Auto
- 5 door hatch
- 4 cylinder
- USB
- Bluetooth
- Cruise control
- Reversing camera or sensors



	1-3 DAYS	4-6 DAYS	7+ DAYS	BASIC EXCESS			ZERO EXCESS		
				1-3 DAYS	4-6 DAYS	7+ DAYS	1-3 DAYS	4-6 DAYS	7+ DAYS
DOWNTOWN	\$76*	\$71*	\$66*	\$102*	\$96*	\$91*			
AIRPORT	\$95*	\$88*	\$82*	\$121*	\$114*	\$108*			

TOYOTA COROLLA SEDAN (or similar)

GROUP D

- Auto
- 4 door sedan
- 4 cylinder
- USB
- Bluetooth
- Cruise control
- Reversing camera or sensors



	1-3 DAYS	4-6 DAYS	7+ DAYS	BASIC EXCESS			ZERO EXCESS		
				1-3 DAYS	4-6 DAYS	7+ DAYS	1-3 DAYS	4-6 DAYS	7+ DAYS
DOWNTOWN	\$85*	\$76*	\$73*	\$110*	\$101*	\$99*			
AIRPORT	\$106*	\$94*	\$91*	\$132*	\$121*	\$117*			

TOYOTA YARIS CROSS (or similar)

GROUP S

- Auto
- 5 door SUV
- 4 cylinder
- USB
- Bluetooth
- Smart cruise control
- Smartphone connectivity



	1-3 DAYS	4-6 DAYS	7+ DAYS	BASIC EXCESS			ZERO EXCESS		
				1-3 DAYS	4-6 DAYS	7+ DAYS	1-3 DAYS	4-6 DAYS	7+ DAYS
DOWNTOWN	\$85*	\$76*	\$73*	\$110*	\$101*	\$99*			
AIRPORT	\$106*	\$94*	\$91*	\$132*	\$121*	\$117*			

MITSUBISHI OUTLANDER (or similar)

GROUP K

- Auto
- 5 door SUV
- 4 cylinder
- USB
- Bluetooth
- Smart cruise control
- Reversing camera or sensors
- Smartphone connectivity



	1-3 DAYS	4-6 DAYS	7+ DAYS	BASIC EXCESS			ZERO EXCESS		
				1-3 DAYS	4-6 DAYS	7+ DAYS	1-3 DAYS	4-6 DAYS	7+ DAYS
DOWNTOWN	\$96*	\$90*	\$82*	\$121*	\$116*	\$108*			
AIRPORT	\$120*	\$113*	\$103*	\$145*	\$139*	\$129*			

HYUNDAI STARIA (or similar)

GROUP V

- Auto
- 5 door van
- 4/6 cylinder
- USB
- Bluetooth
- Cruise control
- Reversing camera or sensors



	1-3 DAYS	4-6 DAYS	7+ DAYS	BASIC EXCESS			ZERO EXCESS		
				1-3 DAYS	4-6 DAYS	7+ DAYS	1-3 DAYS	4-6 DAYS	7+ DAYS
DOWNTOWN	\$118*	\$106*	\$101*	\$143*	\$131*	\$126*			
AIRPORT	\$148*	\$132*	\$126*	\$173*	\$157*	\$152*			

TOYOTA KLUGER (or similar)

GROUP H

- Auto
- 5 door SUV
- 4/6 cylinder
- USB
- Bluetooth
- Reversing camera or sensors



	1-3 DAYS	4-6 DAYS	7+ DAYS	BASIC EXCESS			ZERO EXCESS		
				1-3 DAYS	4-6 DAYS	7+ DAYS	1-3 DAYS	4-6 DAYS	7+ DAYS
DOWNTOWN	\$122*	\$118*	\$111*	\$178*	\$174*	\$168*			
AIRPORT	\$152*	\$147*	\$139*	\$209*	\$204*	\$196*			

FORD EVEREST (or similar)

GROUP W

- Auto
- 5 door 4WD
- 4/6 cylinder
- USB
- Bluetooth



	1-3 DAYS	4-6 DAYS	7+ DAYS	BASIC EXCESS			ZERO EXCESS		
				1-3 DAYS	4-6 DAYS	7+ DAYS	1-3 DAYS	4-6 DAYS	7+ DAYS
DOWNTOWN	\$152*	\$137*	\$131*	\$208*	\$193*	\$187*			
AIRPORT	\$190*	\$171*	\$163*	\$246*	\$227*	\$220*			

VICTORIA

Victoria charms with its cosmopolitan energy, scenic beauty, and rich cultural tapestry. Every journey offers a deeply immersive experience - from alpine escapes and vineyard trails to coastal drives and historic gold rush towns or wander through Melbourne's creative laneways to uncover the vibrant streets alive with art and music. With dramatic coastlines and dynamic cityscapes, Victoria awaits your adventure.





MELBOURNE

Iconic laneways, eclectic nightlife, dynamic arts scene, fabulous shopping, major sporting events and mouth-watering food and wine – Melbourne is the mecca for all things sporty, trendy and tasty. Whether you want to catch a gig, sip world class coffee or explore galleries, there's always something and somewhere, new to discover in Melbourne.



YARRA VALLEY

Just under an hour from Melbourne, the Yarra Valley is a lush, rolling landscape of vineyards and forests and is the perfect place to sample amazing food and wine. Taste your way through over 80 wineries dotted throughout the area, indulge in farm to table dining or get a bird's-eye view from a hot air balloon ride.



THE GRAMPIANS

One of Victoria's most popular holiday destinations, the Grampians is a series of rugged sandstone mountain ranges and forests. Rich in native wildlife, the national park is a great place for camping, climbing, scenic drives and bushwalking. See ancient aboriginal rock art, explore sparkling waterfalls and admire spectacular wildflowers.



GREAT OCEAN ROAD

From rainforests and rivers to dormant volcanoes and rugged coastlines, the Great Ocean Road showcases nature at its most diverse. Marvel at the limestone formations of the Twelve Apostles, see the world-famous waves at Bells Beach, explore the waterfalls in Lorne or laze on the golden sands at Anglesea.



MORNINGTON PENINSULA

Breathe in the fresh sea air and immerse yourself in the relaxed alfresco lifestyle of the Mornington Peninsula, only one hour from Melbourne. Explore seaside villages, cool off with a day on the beach, unwind in award winning thermal springs or escape to the hinterland for gourmet delights at boutique wineries.



THE MURRAY

Set on the border of Victoria and New South Wales, experience the mighty Murray River, explore historic towns and discover stories of the early pioneers. Indulge in wine tasting or savour some local flavours at a riverside winery. Take a cruise on a historic paddle steamer and learn about the history of the region at the open-air museums.



VICTORIA

Mildura

Murray Sunset National Park

Wyperfeld National Park

Swan Hill

New South Wales

Moama

Echuca

Wodonga

Beachworth

Wangaratta

Bright

Falls Creek

Mt Hotham

Mt Buller

Mt Buffalo National Park

Alpine National Park

Horsham

St Arnaud

Bendigo

Shepparton

Seymour

Castlemaine

Hepburn Springs

Daylesford

Creswick

Kyneton

Mt Macedon

Kinglake National Park

Yarra Valley

Baw Baw National Park

Stawell

Halls Gap
Grampians National Park

Ararat

Ballarat

Healesville

Yering

Warrandyte

St Kilda

Dandenong

Melbourne

Drouin

Walhalla

Bairnsdale

Lakes Entrance

The Lakes National Park

South Australia

Hamilton

Werribee

Avalon

Geelong

Queenscliff

Torquay

Anglesea

Lorne

Apollo Bay

Port Phillip Bay

Cape Schanck

BASS STRAIT

Wilson's Promontory National Park

Portland

Cape Nelson

Port Fairy

Warrnambool

Port Campbell

Twelve Apostles

Port Campbell National Park

Otway National Park

Cape Otway

Phillip Island

Rosebud

Cowes

Mornington

Warragul

Moe

Gippsland

Sale

Traralgon

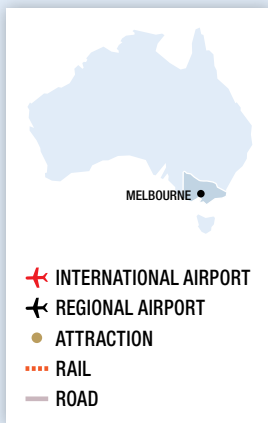
PLANNING AHEAD

Victoria is a wonderful place to visit all year round. Before you begin your next trip, make sure to read our helpful travel information, to ensure you make the most of your time in the garden state of Australia.



Wilsons Promontory National Park, Gippsland

Visit Victoria/William Watt



WHEN TO GO

Victoria has a varied climate and enjoys warm, dry summers, glorious springs, mild autumns and crisp winters. During the summer months, the weather heats up, perfect for lazing in the sun and exploring coastal towns. Spring time in Victoria is the most varied with weather quickly changing from calm and sunny to cold and windy. Autumn months are mild and see cooler temperatures with many festivals occurring during this period. Winter can be cold and cloudy with frosty nights, so perfect to head to the snow fields and hit the slopes.

GETTING AROUND

BY CAR

Take the time to explore and discover as you make your way through Victoria by road. We offer a selection of suggested driving itineraries, providing you with the freedom to discover some of the highlights of Victoria at your own pace. See pages 6 to 7 for car hire options and page 14 for Self Drive Holidays.

WATER SAFETY

Australia has some of the world's best beaches, however care and caution should be exercised at all times. Please remember to swim between the red and yellow flags and listen to instructions from lifesavers and lifeguards.

SPECIAL EVENTS

Victoria hosts some of Australia's most prestigious events throughout the year. Be prepared and book in advance if attending a special event. The most famous event is the Spring Racing Carnival featuring the Melbourne Cup Carnival in November. See the world's top tennis players at the Australian Open tennis tournament during January. The Formula 1® Australian Grand Prix is held in March. Look out for the many cultural and food and wine events around the state.

TEMPERATURE & RAINFALL

Melbourne	J	F	M	A	M	J	J	A	S	O	N	D
Temperature (max °C)	26	27	24	21	17	15	14	16	18	20	22	24
Average rainfall (mm)	41	25	33	49	61	44	50	57	51	52	54	59
Warrnambool	J	F	M	A	M	J	J	A	S	O	N	D
Temperature (max °C)	21	21	20	18	16	14	13	14	15	16	18	19
Average rainfall (mm)	28	23	30	40	49	63	63	66	61	49	39	36
Yarra Valley	J	F	M	A	M	J	J	A	S	O	N	D
Temperature (max °C)	26	26	23	19	15	12	12	13	16	19	22	24
Average rainfall (mm)	57	67	64	90	96	81	86	99	93	106	90	85
Sorrento	J	F	M	A	M	J	J	A	S	O	N	D
Temperature (max °C)	28	28	25	21	17	15	14	15	18	21	23	26
Average rainfall (mm)	50	38	40	61	47	47	43	55	59	51	52	43
Echuca	J	F	M	A	M	J	J	A	S	O	N	D
Temperature (max °C)	29	28	26	23	19	17	16	17	20	23	25	28
Average rainfall (mm)	16	18	20	28	35	38	36	36	36	33	25	24

EXPERIENCES YOU'LL LOVE

The best part of any journey is the experiences you have along the way, leaving you with memories to relive long after the holiday is over.

Victoria has countless amazing things to see and do. Here are some of our favourites to inspire your wanderlust.





SHOP 'TIL YOU DROP

Melbourne is undeniably the nation's fashion and style mecca. From the high-end fashions of Chapel Street and Emporium Melbourne to the stalls of Queen Victoria Market, there is something to satisfy all tastes. Wander through historic, old-world laneways and arcades for those one-off vintage pieces. Visit the largest shopping destination in Australia at Chadstone.



GREAT VICTORIAN DRIVES

Hit the road and uncover Victoria's most spectacular drives. From the rugged coastline of the Great Ocean Road to the serene beauty of the Grampians and the lush Yarra Ranges, every route promises amazing experiences. Explore charming towns, indulge in local produce, and create unforgettable memories on iconic driving adventures.



SOAK IN A HOT SPRING

Relaxation and rejuvenation are holiday essentials. Discover Victoria's award-winning hot springs for the ultimate wellness escape. Unwind at Peninsula Hot Springs or Alba on the Mornington Peninsula, soak in spa country's Hepburn Bathhouse, or journey east to Metung Hot Springs for tranquil bathing with stunning lakeside views.



GAME DAY AT THE MCG

Experience the tradition and heritage of the iconic Melbourne Cricket Ground, home to cricket legends and the birthplace of Australian Rules Football. From epic cricket battles to thrilling footy clashes, the MCG is the ultimate arena for live sport. Dress in your team colours, feel the roar of the crowd, and immerse yourself in unforgettable sporting action.



MAKE TIME FOR WINE

You'll be spoilt for choice with the number of exceptional wineries on offer in Victoria. With more than 800 wineries and 600 cellar doors, wander through the vineyards and sample incredible wines across Victoria's five picturesque wine regions – the Mornington Peninsula, Yarra Valley, Bellarine Peninsula and King Valley.



WATCH THE LITTLE PENGUIN PARADE

Phillip Island is home to the largest little penguin colony in the world. Standing on average 33 centimetres tall and weighing one kilogram, they are the world's smallest penguins. From viewing platforms and boardwalks, experience the enchanting sight of these adorable little creatures waddling home from the ocean to their burrows each evening.

SELF DRIVE HOLIDAYS

There's no better way to discover Victoria than on a self drive holiday. Travelling by road is one of the best ways to explore and our selection of hand-crafted itineraries will take you to the must-see locations. Each itinerary incorporates accommodation and car hire, while some also include local experiences.

We have selected some of our favourites from the range of flexible self drive itinerary options available. Itineraries can be tailored to suit your individual needs and requirements by including extra nights, alternative vehicle types, accommodation upgrades, as well as local tours and cruises.

To create your own dream road trip, simply contact us and we will craft a personalised self drive holiday to suit you.



Great Ocean Road

Visit Victoria/Mark Watson



Budj Bim National Park

Visit Victoria/Artra Shutterstock



GREAT SOUTHERN TOURING ROUTE 4 DAYS

Day 1: Melbourne to Apollo Bay – 197km Collect your hire car and travel south west to Geelong and Torquay, the start of the Great Ocean Road. Visit Bells Beach, Anglesea and Lorne. Overnight at The International, Apollo Bay.

Day 2: Apollo Bay to Port Fairy – 184km Travel to Port Campbell, winding through the ferny slopes of Cape Otway. When you meet the coast again, see amazing rock formations including the Twelve Apostles and London Arch. Continue to Port Fairy and an overnight stay at Merrijig Inn.

Day 3: Port Fairy to Halls Gap – 209km (B) Depart Port Fairy and drive to Breakway Creek, the departure point for a truly unique guided tour. Join a Gunditjmara cultural guide on an informative walk around the World Heritage listed Tae Rak (Lake Condah). Following the tour, drive

north to the Grampians National Park and Halls Gap. Overnight at Country Plaza Halls Gap.

Day 4: Halls Gap to Melbourne – 254km Visit the town of Stawell, home of the Stawell Gift, Australia's richest footrace. Explore the surrounding areas and some of the fabulous wineries, such as Montara Estate. On the way to Ballarat, Victoria's largest inland city, stop at Ararat and Beaufort. Ballarat is famous for being the site of the world's largest deposit of alluvial gold. From Ballarat travel via Daylesford and Hepburn Springs. This region is famous for the health-giving mineral spring waters that bubble naturally to the surface. Return to Melbourne where your self drive holiday concludes.

(B = breakfast)

From **\$618*** per person twin share

4 DAYS | MELBOURNE TO MELBOURNE
TRAVEL TYPE: Self drive
DEPARTS: Wednesdays

HIGHLIGHTS

- Travel along the scenic Great Ocean Road
- Stop and take in Cape Otway
- Marvel at the Twelve Apostles
- Discover the World Heritage listed Tae Rak (Lake Condah) through the eyes of a Gunditjmara cultural guide
- Explore the historic town of Ballarat

INCLUDES

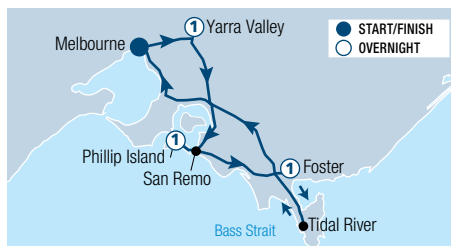
- 3 nights accommodation
- Meals as specified
- 2 hour Budj Bim Cultural Landscape Tae Rak Guided Cultural Walk
- 4 days Group C car rental with Budget+

+ Based on pick up from airport depot.



Phillip Island

Visit Victoria



DISCOVER VICTORIA 4 DAYS

Day 1: Melbourne to Yarra Valley – 42km Pick up your hire car and leave Melbourne, the best route to the Yarra Valley is via the Eastern Freeway through Melbourne's eastern suburbs. Numerous wineries offer cellar door tastings and sales, and have restaurants serving gourmet food and fine local produce. Overnight at Yarra Valley Lodge.

Day 2: Yarra Valley to Phillip Island – 143km This morning travel south east to San Remo in time for the free daily feeding of the pelicans at noon, before heading over the bridge to Phillip Island. Phillip Island is home to Australia's famous little penguins. The 'Penguin Parade' occurs each evening at sunset and should not be missed. Overnight at Phillip Island Apartments.

Day 3: Phillip Island to Wilsons Promontory – 104km Depart Phillip Island and continue along the coastal Bass Highway to Wonthaggi and Inverloch where you may like to stop for morning tea before turning onto the Promontory Road which takes you straight into Wilsons Promontory. Overnight at Prom Country Lodge, Foster.

Day 4: Wilsons Promontory to Melbourne – 285km Begin your day with a two and a half hour guided wilderness cruise in the waters of Bass Strait and Victoria's first marine national park. Discover the beautiful granite coastline and unique wilderness of Wilsons Promontory National Park. The cruise returns to Tidal River in the early afternoon. Continue on to Melbourne where your self drive holiday concludes.

From **\$762*** per person twin share

4 DAYS | MELBOURNE TO MELBOURNE
TRAVEL TYPE: Self drive
DEPARTS: Daily

HIGHLIGHTS

- Taste cool-climate wines at the Yarra Valley wineries
- Pelican feeding from the Fisherman's Jetty at San Remo
- Delight at the little penguins marching from the beach to their burrows
- Spend time exploring the seaside town of Inverloch
- Cruise along the rugged coastline of Wilsons Promontory National Park

INCLUDES

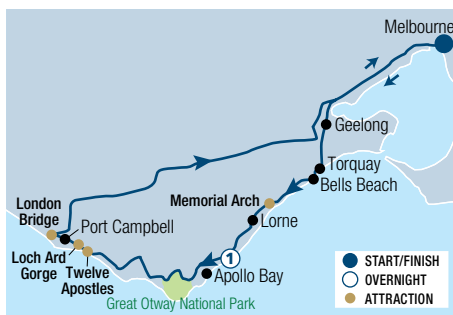
- 3 nights accommodation
- 4 days Group C car rental with Budget+
- 2.5 hour Wilsons Promontory Cruise

+ Based on pick up from airport depot.

* FROM PRICES ARE A GUIDE ONLY, subject to change and availability and are in Australian Dollars. Prices are per person twin share, unless otherwise specified and based on the lowest room category and travel in low season. For full terms and conditions, refer to the Booking Conditions on the inside back cover of this brochure.



Twelve Apostles, Great Ocean Road



GREAT OCEAN ROAD 2 DAYS

Day 1: Melbourne to Apollo Bay (D)

Be met at the hotel and introduced to this thorough, relaxed and diverse tour. The small group will travel through volcanic plains towards the amazing coastline. Winding along the cliff hugging road, see surf beaches, Memorial Arch and lighthouses before heading into Lorne for lunch. Travel into Great Otway National Park to take a one kilometre guided walk through the rainforest. Dinner is at the Chris's Restaurant. Overnight at Chris's Restaurant and Villas, Apollo Bay.

Day 2: Apollo Bay to Melbourne (B)

After breakfast, travel through the Otway Ranges and onto the 'Shipwreck Coast'. Arrive at the Twelve Apostles rock stacks before the crowds and then learn about the famous 19th century Australian shipwreck, the 'Loch Ard'. Stop for lunch at Port Campbell. Travel to London Bridge, Bay of Martyrs and Boat Bay before returning to Melbourne approximately 6pm where your tour concludes.

(B = breakfast, D = dinner)

From **\$1325*** per person twin share



2 DAYS | MELBOURNE TO MELBOURNE

OPERATOR: Australian Natural Treasures

TRAVEL TYPE: Escorted coach

DEPARTS: Sun, Wed (1 Apr – 23 Dec 26, 12 Jan – 31 Mar 27)

HIGHLIGHTS

- Visit scenic Apollo Bay, Torquay and Bells Beach
- Drive through the Great Otway National Park
- Admire the grandeur of the Twelve Apostles
- View impressive Shipwreck Coast
- Take in the grand London Bridge

INCLUDES

- 1 night 4 star accommodation
- Meals as specified • Expert guide
- Guided Great Otway National Park Walk
- National park fees
- Return transfers from selected Melbourne accommodation



Twelve Apostles, Great Ocean Road



GREAT OCEAN ROAD & GRAMPIANS ESCAPE 3 DAYS

Day 1: Melbourne to Great Ocean Road (D)

Begin your three day adventure on the Great Ocean Road, enjoying ocean views, surf beaches, and wild koalas. Stop in Apollo Bay for lunch, then explore the Great Otway National Park rainforest. Visit the Twelve Apostles and Loch Ard Gorge before an overnight stay in Warrnambool.

Day 2: Great Ocean Road to Grampians (BD)

On day two, visit Tower Hill Conservation Reserve, home to emus and kangaroos. Then, head to the Grampians for an afternoon hike to the Pinnacle lookout, offering

stunning views. End the day with a traditional Aussie BBQ and an overnight stay in Halls Gap.

Day 3: Grampians to Melbourne (B)

On the final day, hike to the base of Mackenzie Falls and visit iconic sites like The Balconies, Reeds Lookout, and Boroka Lookout. After exploring the coastline and mountains, return to Melbourne, arriving around 5:30pm after an unforgettable journey.

(B = breakfast, D = dinner)

From **\$1020*** per person twin share

3 DAYS | MELBOURNE TO MELBOURNE

OPERATOR: Autopia Tours

TRAVEL TYPE: Escorted coach

DEPARTS: Selected Sun (Apr – Mar), Selected Thu (Nov – Apr)

HIGHLIGHTS

- Travel the Great Ocean Road and Twelve Apostles
- Rainforest walk in the Great Otway National Park
- Discover the Grampians National Park

INCLUDES

- 2 nights 3½ star accommodation
- Meals as specified
- Guided bushwalks approx. 6.5kms
- Expert tour guide • National park fees
- Transport by air-conditioned coach
- Pick-up from selected Melbourne accommodation

Not suitable for children under 6 yrs. Moderate fitness level required. Shared accommodation option also available.



Pinnacle Lookout, Grampians National Park



MELBOURNE TO ADELAIDE ORIGINAL OVERLAND 3 DAYS

Day 1: Melbourne to Warrnambool (D)

Journey along the Great Ocean Road, enjoying stunning ocean views and surf beaches. Stop at Apollo Bay for lunch, walk through the Otway rainforest, and visit the Twelve Apostles and Loch Ard Gorge on the Shipwreck Coast. Spend the night in Warrnambool, with dinner at a local favourite pub and brewery.

Day 2: Warrnambool to Halls Gap (BD)

Visit Tower Hill Wildlife Reserve, an extinct volcano rich in Aboriginal history, home to emus and kangaroos. Head to the Grampians National Park for a hike to Pinnacle Lookout with stunning views. End the day with a classic Aussie BBQ and overnight in Halls Gap.

Day 3: Halls Gap to Adelaide (B)

Begin with a morning hike to Mackenzie Falls, then visit iconic lookouts like The Balconies, Reeds, and Boroka. After lunch, journey west past Dimboola Pink Lake and Nhill and Bordertown, crossing into South Australia to arrive in Adelaide around 7:30pm.

(B = breakfast, D = dinner)

Tour also available in reverse from Adelaide to Melbourne. Departs selected Wed, Sun (1 – 30 Apr, 1 Nov – 19 Dec 26, 10 Jan – 31 Mar 27), selected Wed (1 May – 31 Oct 26).

From **\$1020*** per person twin share

3 DAYS | MELBOURNE TO ADELAIDE

OPERATOR: Autopia Tours

TRAVEL TYPE: Escorted coach

DEPARTS: Selected Sun (Apr – Mar), Selected Thu (Nov – Apr)

HIGHLIGHTS

- Journey along the Great Ocean Road
- See the breathtaking Twelve Apostles
- Explore the rugged wilderness of the Grampians

INCLUDES

- 2 nights 3½ star accommodation
- Meals as specified • Expert tour guide
- Guided bushwalks approx. 6.5kms
- National park fees
- Transport by air-conditioned coach
- Pick-up from selected Melbourne accommodation
- Drop-off to selected Adelaide accommodation

Not suitable for children under 6 yrs. Moderate fitness level required. Shared accommodation option also available.

*FROM PRICES ARE A GUIDE ONLY, subject to change and availability and are in Australian Dollars. Prices are per person twin share, unless otherwise specified and based on the lowest room category and travel in low season. For full terms and conditions, refer to the Booking Conditions on the inside back cover of this brochure.

CRUISING



PS Australian Star – Artist's Impression



Queen Stateroom

CRUISING THE MURRAY RIVER – PS AUSTRALIAN STAR 3, 4 & 7 NIGHTS

Embark on a journey into a new era of river cruising with the PS Australian Star. Scheduled for a grand launch in early 2026, the PS Australian Star will redefine river cruising, offering year-round, all-inclusive, overnight experiences with 3, 4, and 7-night itineraries along the majestic Murray River. On debut, PS Australian Star will be the only luxury accommodated wood-powered paddle steamer in the world.

Named in honour of Australia's celestial Southern Cross, the Australian Star features opulent interiors, where each stateroom and lounge exude an air of refinement. Boasting 19 plush and modern staterooms, each opening to a deck and featuring an ensuite, air-conditioning, complimentary Wi-Fi, luxury linen, and a TV entertainment system, the Australian Star ensures a luxurious retreat for every traveller. Moreover, its ever-changing river views provide a constant reminder of the beauty that surrounds.

The Randell Dining Room serves breakfast, lunch and dinner with French doors, picturesque windows and alfresco dining. The Hopwood Lounge & Bar offers an elegant "club" feel and is an inviting space with cozy seating to enjoy a drink and meet fellow travellers.

VESSEL FEATURES:

- Sundeck • Air-conditioning
- Dining room • Lounge and bar
- Internal lift access • Maximum 38 guests

STATEROOMS & SUITES FEATURES:

- Air-conditioning
- Full ensuite
- Choice of queen or twin beds

INCLUDES:

- On board accommodation
- All meals including morning and afternoon tea
- Selected wine and beer with dinner service
- Espresso coffee, tea, soft drinks and bottled water
- Complimentary Wi-Fi throughout the vessel
- Curated and exclusive guided tours
- Return V/Line train fare from Melbourne
- Return transfers from the Mercure Hotel Echuca, train station or parking facility to/from vessel

Operator: Murray River Paddlesteamers

DEPARTURE INFORMATION:

From Riverboat Dock, Echuca
(2 hours 30 minutes from Melbourne CBD)

3 NIGHT DISCOVERY CRUISE

Departs: Fri at 4pm from Echuca

Concludes: Mon at 9:30am at Torrumbarry

4 NIGHT EXPLORER CRUISE

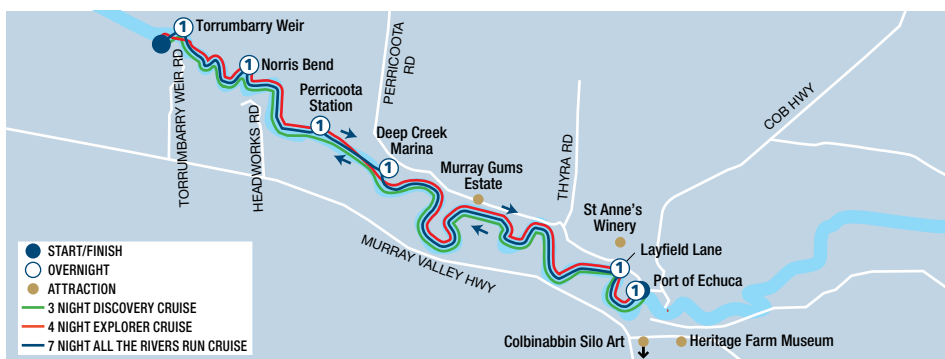
Departs: Mon at 4pm from Torrumbarry

Concludes: Fri at 9:30am from Torrumbarry

7 NIGHT ALL THE RIVERS RUN CRUISE

Departs: Mon at 4pm from Torrumbarry

Concludes: Mon at 9:30am at Torrumbarry



	Adult
3 Night Discovery Cruise	\$2670* [^]
4 Night Explorer Cruise	\$3560* [^]
7 Night All the Rivers Run Cruise	\$6280* [^]

[^]Price based on a Queen Stateroom. Sole use, Queen Suite and King Suite prices are also available. Not suitable for children under 18 yrs.

* FROM PRICES ARE A GUIDE ONLY, subject to change and availability and are in Australian Dollars. Prices are per person twin share, unless otherwise specified and based on the lowest room category and travel in low season. For full terms and conditions, refer to the Booking Conditions on the inside back cover of this brochure.



Melbourne

Visit Victoria



MELBOURNE

Cosmopolitan, fashionable and cultural, fall in love with the inviting atmosphere of this city and the surrounds. From shopping, sports, wining, dining and the arts, Melbourne will put you under its spell. Discover hidden treasure in the city laneways or head to the outer precincts of South Melbourne, Fitzroy, Carlton, South Yarra and Prahran for aromatic cafés and chic fashion boutiques. The easiest and best way to view the city and surrounds is by the unmistakable city trams.

SEE

- See some of the best street art on offer in Hosier Lane and AC/DC Lane
- Experience world-class performances in Melbourne's vibrant theatre district, where culture and creativity take centre stage

DO

- Head up to Melbourne Skydeck for an incredible view of the city, standing 297 metres above the streets of Melbourne
- Take a tram to Queen Victoria Market and stroll around the 600+ fresh food and fashion stalls

WHAT'S ON

AFL Grand Final
26 September

Melbourne Cup Carnival
31 October to 7 November

Australian Open Tennis
January

Formula 1® Australian Grand Prix
March

Avalon Australian International Airshow
March

REF.	APARTMENTS	PAGE
1	Adina Apartment Hotel Melbourne	22
2	Aspire Melbourne	21

REF.	HOTELS	PAGE
3	1 Hotel Melbourne	24
4	Crown Metropal Melbourne	25
5	Crown Promenade Melbourne	23
6	Crown Towers	25
7	Crowne Plaza Melbourne	22
8	Holiday Inn Express Melbourne Little Collins	21
9	Hotel Indigo Melbourne on Flinders	21

REF.	HOTELS	PAGE
10	Laneways by Ovolo	23
11	Lanson Place Parliament Gardens	26
12	Pan Pacific Melbourne	26
13	Quincy Hotel	23
14	Rendezvous Hotel Melbourne	24
15	Rydges Melbourne	24
16	The Savoy Hotel on Little Collins	24
17	Travelodge Hotel Melbourne, Docklands	22
18	Vibe Hotel Melbourne	22
19	Vibe Hotel Melbourne Docklands	25
20	The Victoria Hotel	21

MELBOURNE TRANSFERS & TOURS



LIMOUSINE TRANSFERS

Arrive in style with a private car transfer. Car transfers are available from Melbourne Airport to Melbourne accommodation, 24 hours a day, 7 days a week. Sit back, relax and enjoy the passing scenery as you are transferred in air-conditioned comfort.

With a history of excellence in chauffeured limousines, Royale Limousines is the ultimate in luxury and style. Whether you are travelling for business or pleasure, you are always guaranteed first class service.

At Royale Limousines the primary concern for all staff, from chauffeurs and coach drivers right through to office and reservations staff, is to ensure that you are not only well looked after, but treated to an experience that exceeds even your best expectations.

Operator: Royale Limousines

	Sedan 1 to 2 People	People Mover 1 to 4 People
Melbourne CBD	\$170*[^]	\$238*[^]

[^]Price based on per vehicle one way to/from Melbourne Airport.



AIRPORT COACH TRANSFERS

Get your Melbourne holiday off to a great start with door to door coach transfers. Airport Con-X-ion – Melbourne provides a personalised and professional shared coach shuttle service between Melbourne Airport and Melbourne CBD accommodation and surrounds.

The Meet and Greet Service operates seven days a week and will meet all pre-booked customers arriving into Melbourne Airport.

Operator: Airport Con-X-ion – Melbourne

Not suitable for children under 8 yrs.

	Adult	Child 7-13 yrs
Melbourne CBD	\$52*[^]	\$25*[^]
South Yarra/St Kilda	\$75*[^]	\$31*[^]

[^]Price based on per person one way to/from Melbourne Airport.



CHADSTONE TOURIST SHOPPING PASSPORT

Chadstone – Australia's leading lifestyle destination is located just 17km from the Melbourne CBD and features over 500 stores and more than 95 dining and fresh food outlets. Travel to Chadstone in style on the free Chadstone Tourist Shuttle with multiple daily departures from Federation Square to Chadstone and return.

Start your shopping experience with a visit to the Chadstone Visitor Lounge and receive an exclusive Chadstone tote bag, bottle of water, store directory and a Chadstone Tourist Shopping Passport. The passport provides you access to over 100 exclusive offers across luxury brands, iconic Australian designers, local and international fashion brands, world-class dining and more. The Visitor Lounge is a comfortable place where you can take a moment to relax and recharge.

Includes:

- Chadstone tote bag • Bottle of water
- Chadstone Tourist Shopping Passport



ULTIMATE SKYDECK EXPERIENCE

At Melbourne Skydeck, the southern hemisphere's highest observation deck, the city comes to you when you take it all in from nearly 300 metres high. It's an experience on another level! Make your visit unforgettable by exploring its key attractions, including the Skydeck, Edge, and VR Theatre.

Includes:

- Melbourne Skydeck admission
- Bar 88 voucher
- Edge and digital photo
- Gift shop voucher
- Voyager VR Theatre

Operator: Melbourne Skydeck

Open: Daily 12 noon to 10pm
Last entry 30 mins prior to closing time

	Adult	Child 4-16 yrs
Ultimate Skydeck Experience	\$59*	\$45*



HISTORY & DONUTS WALKING TOUR

Immerse yourself in Melbourne's unique culture on the History and Donuts Walking Tour. This casual morning stroll explores Melbourne's history, culture and amazing laneways all while indulging in some delicious donuts.

Includes:

- Tastings of two donuts and a coffee
- Knowledgeable local guide

Operator: Fit City Tours

Duration: 2 hours 30 minutes

Departs: Daily from Federation Square at 10:30am

	Adult	Child 5-17 yrs
Walking Tour	\$134*	\$49*



BAY TO LANEWAYS: MELBOURNE CITY EXPLORER

Discover Melbourne's charm on a journey from the city to the bay. Snap photos at Brighton's iconic Bathing Boxes, wander vibrant laneways, and uncover historic treasures from Gothic Bank to Queen Victoria Market. Explore lush gardens, cultural landmarks, and finish at Southbank for art or dining.

Includes:

- Walking tour through famous laneways and arcades
- Expert guide and commentary
- Transport by air-conditioned mini-coach
- Return transfers from selected Melbourne city accommodation

Operator: Oceania Tours and Safaris

Duration: 3 hours

Departs: Daily from Melbourne at 8:30am

Afternoon Tour also available.

	Adult	Child 0-15 yrs
Sightseeing Tour	\$139*	\$99*



PENINSULA HOT SPRINGS

Escape to Peninsula Hot Springs for a peaceful morning soak. Enjoy natural geothermal pools and over 50 bathing experiences, from cave pools to the hilltop pool with 360° views. Visit Arthurs Seat for stunning vistas and the iconic coastal beach boxes, with relaxing hassle-free transfers only 90 minutes from Melbourne.

Includes:

- Bath House Revitalise entry with priority entrance
- 3 hours of bathing time
- Photo opportunity at beach bathing boxes and scenic lookout views
- Transport by air-conditioned official hot springs mini-coach
- Return transfer from Melbourne city location

Operator: Autopia Tours

Duration: 6 hours 30 minutes

Departs: Daily from Melbourne at 8:20am

	Adult	Child 3-15 yrs
Sightseeing Tour	\$190*	\$171*



YARRA VALLEY WINE EXPERIENCE

Your Yarra Valley winery tour includes tutored tastings at four premium wineries and a superb winery restaurant lunch. Enjoy lunch which includes a glass of wine and one course from an à la carte menu.

Includes:

- 1 course à la carte lunch at a winery restaurant with a glass of wine
- Expert wine guide
- Tutored tastings at 4 premium wineries
- Transport by air-conditioned mini-bus
- Return transfers from four convenient Melbourne city locations

Operator: Australian Wine Tour Company

Duration: 7 hours

Departs: Daily from Melbourne between 9:20am and 9:45am

	Adult	Child 5-15 yrs
Winery Tour	\$185*	\$145*



LAKE MOUNTAIN SNOW & WATERFALLS TOUR

Enjoy a scenic drive through the Yarra Valley, renowned for its wines, as well as the iconic 'Black Spur'. Visit Lake Mountain, Melbourne's closest snow resort, for winter fun, hiking to summit views, or tobogganing. Take a nature walk to Steavenson Falls and indulge at the Yarra Valley Chocolaterie with demonstrations and samples.

Includes:

- Chocolate samples
- 3 hours of winter snow play
- Lake Mountain Resort entry fee
- Transport by premium coach with Wi-Fi
- Return transfers from selected Melbourne accommodation

Operator: Autopia Tours

Duration: 10 hours

Departs: Thu to Mon from Melbourne at 8am (6 Jun – 6 Sep 26)

	Adult	Child 4-12 yrs
Sightseeing Tour	\$180*	\$162*



PHILLIP ISLAND DAY TOUR

Discover Phillip Island's unique nature experiences and dramatic landscapes. Visit the Moonlit Sanctuary Conservation Park, Woolamai Surf Beach (time permitting) and the Nobbies, home to the largest colony of fur seals in Australia. And finally, to Phillip Island's black tie gala event: the world-famous Penguin Parade.

Includes:

- Entry fee to Moonlit Sanctuary and Phillip Island Nature Park Regular Viewing area
- Expert guide and commentary
- Transport by air-conditioned mini-coach
- Return transfers from selected Melbourne city accommodation

Operator: Oceania Tours and Safaris

Duration: 8 – 10 hours

Departs: Daily from Melbourne at 1pm (Mid Apr – Sep), 1:30pm (Oct – Mid Apr)

	Adult	Child 0-15 yrs
Sightseeing Tour	\$235*	\$125*



PHILLIP ISLAND & BRIGHTON BEACH BOXES

Discover Victoria's coastal wonders! Explore Brighton Beach Boxes, meet native wildlife at Moonlit Sanctuary, stroll Nobbies boardwalk, and marvel at the Penguin Parade for an unforgettable day of nature and adventure.

Includes:

- Visit Brighton Beach Boxes
- Admission to Moonlit Sanctuary Wildlife Conservation Park and the Nobbies
- Witness the world famous penguin parade
- Transport by air-conditioned coach
- Return transfers from selected Melbourne accommodation

Operator: Wine Hop and Coastal Tours

Duration: 12 hours

Departs: Daily from Melbourne at 10:30am (Apr – Oct), 11am (Nov – Dec), 11:30am (Jan – Mar)

	Adult	Child 3-15 yrs
Sightseeing Tour	\$159*	\$114*



PHILLIP ISLAND PENGUINS

Witness hundreds of the world's smallest penguins coming home at sunset on Phillip Island. Discover the Island's majestic coastline, stunning landscapes, and diverse wildlife in an unforgettable experience. Visit the Koala Conservation Reserve, explore The Nobbies with cliff-top views, and learn about conservation at the Penguin Parade Visitor Centre.

Includes:

- Penguin Parade and Koala Conservation Reserve entry
- Close encounter wildlife experience
- Transport by premium coach with Wi-Fi
- Return transfers from selected Melbourne accommodation

Operator: Autopia Tours

Duration: 9 hours 30 minutes

Departs: Daily from Melbourne at 11:45am (5 Apr – 3 Oct), 1:45pm (4 Oct – 31 Mar)

	Adult	Child 4-12 yrs
General Viewing Area	\$180*	\$162*
Penguins Plus Viewing	\$250*	\$225*

MELBOURNE TOURS



TWELVE APOSTLES, BACK ROADS GOURMET TOUR

See the magnificent rocks formations commonly known as the Twelve Apostles and Loch Ard Gorge where you will hear of stories of tragedy and survival. Enjoy delicious treats from local producers. A fantastic tour combining gourmet experiences and amazing natural landscapes hidden in plain sight.

Includes:

- Chocolate, cheese and fudge tastings
- Light lunch
- Expert guide and commentary
- Transport by air-conditioned mini-coach
- Return transfers from selected Melbourne city accommodation

Operator: Oceania Tours and Safari

Duration: 9 hours 30 minutes

Departs: Mon to Sat from Melbourne at 8:30am

	Adult	Child 0-15 yrs
Sightseeing Tour	\$180*	\$160*



REVERSE GREAT OCEAN ROAD

Explore the iconic Twelve Apostles and shipwreck coast crowd-free, visit Loch Ard Gorge and Shipwreck Coastline. Spot Australian wildlife, enjoy a rainforest walk in Great Otway National Park and drive the famous Great Ocean Road. Experience eco-friendly, sustainable touring while soaking in breathtaking views and natural wonders.

Includes:

- Light picnic-style lunch
- Morning tea and wildlife spotting
- Guided walks approx. 2-3 kms
- National Park fees
- Transport by premium midi-coach with Wi-Fi
- Return transfers from selected Melbourne city accommodation

Operator: Autopia Tours

Duration: 13 hours

Departs: Daily from Melbourne at 7:35am

	Adult	Child 4-12 yrs
Sightseeing Tour with Lunch	\$180*	\$162*



GRAMPIANS NATIONAL PARK

Explore the National Heritage listed Grampians National Park (Gariwerd), visiting MacKenzie Falls, The Balconies, Reeds & Boroka Lookouts and the township of Halls Gap. Marvel at ancient rock formations, native wildlife, and the region's rich Aboriginal heritage on this unforgettable day immersed in nature and culture.

Includes:

- Morning tea and wildlife spotting
- Learn about local Aboriginal culture • National Park fees
- Guided bushwalks approx. 4kms
- Transport by air-conditioned mini-coach with Wi-Fi
- Return transfers from selected Melbourne accommodation

Operator: Autopia Tours

Duration: 12 hours 30 minutes

Departs: Tue, Wed, Fri, Sun from Melbourne at 7:35am

Not suitable for children under 6 yrs. Moderate fitness level required.

	Adult	Child 6-12 yrs
Sightseeing Tour	\$170*	\$153*



Discover Melbourne's Must-See Destinations!

Puffing Billy

Step back in time and ride through lush fern gullies aboard this historic train.

Adventure awaits! From the rugged coastlines of the Great Ocean Road to the charming Puffing Billy steam train, and from the enchanting penguins of Phillip Island to the world-class wineries of the Yarra Valley, we've got unforgettable experiences for every traveler. Explore, relax, and create memories!



Great Ocean Road

Experience one of the world's most scenic coastal drives, the iconic Twelve Apostles and breathtaking views await.



Yarra Valley Winery

Indulge in the finest wines of Victoria's premier wine region whilst soaking in the vineyard valley views.



Penguin Parade

Witness the adorable penguins emerge from the surf and waddle home at sunset, it's pure magic.

MELBOURNE ACCOMMODATION

THE VICTORIA HOTEL



Heritage Queen

215 Little Collins Street, Melbourne
MAP PAGE 17

From **\$159***

- ❖ Conveniently situated within the free tram zone
- ❖ Rooms are spacious and well appointed
- ❖ Enjoy a delicious breakfast at Mister Munro Restaurant & Bar

Location: With Melbourne Town Hall, Flinders Street Station, Bourke Street Mall, Federation Square and the Free Tram Zone all within walking proximity, The Victoria Hotel is the perfect starting point for you to explore the city's cultural tapestry of landmarks, galleries, theatres and museums. Distances: Bourke Street Mall 300m.

Property Features: Pool (indoor plunge), Restaurant, Bars (2), Exercise equipment, Guest laundry, 24 hour reception, Non smoking, Parking (undercover – extra charge), 371 rooms.

Room Features: Air-conditioning, Smart TV, Mini fridge, Tea/coffee making facilities, Ironing facilities, Hair dryer, Safe.

Max Capacity: Heritage Queen/Heritage Twin – 2, Heritage Queen Twin – 4.



ASPIRE MELBOURNE



One Bedroom

301 King Street, Melbourne
MAP PAGE 17

From **\$244***

- ❖ Self-contained with kitchen and laundry facilities
- ❖ Floor to ceiling windows providing sweeping panoramas of the gardens, city or Docklands views

Location: Situated in a southern end of the Melbourne CBD within walking distance of Southern Cross Station and Marvel Stadium. Close to the free tram zone stops, providing effortless access to all the major attractions, laneways, shopping and cultural hotspots the city has to offer. Distances: Bourke Street Mall 1.2km.

Property Features: Indoor pool, Outdoor spa, Outdoor patio with barbecue and fireplaces, Guest lounge, Gym, Sauna, Games room, Guest laundry, Lift, 71 rooms.

Room Features: Air-conditioning, Smart TV, Full kitchen facilities, Tea/coffee making facilities, Washing machine, Ironing facilities, Hair dryer.

Max Capacity: One Bedroom – 2, One Bedroom Executive – 3, Two Bedroom – 4.



HOLIDAY INN EXPRESS MELBOURNE LITTLE COLLINS



Queen

595-599 Little Collins Street, Melbourne
MAP PAGE 17

From **\$264***

- ❖ Contemporary hotel with chic, modern furnishings
- ❖ 24 hour menu of café style meals, snacks and coffee
- ❖ Southern Cross Station and the free City Circle Tram are a short walk away

Includes Express Start breakfast daily.

Location: In the heart of the city on one of Melbourne's most iconic laneways, close to Marvel Stadium and a short walk to local attractions like Melbourne Aquarium, the Crown Complex and South Wharf. Distances: Bourke Street Mall 1km.

Property Features: Great room lounge, Bar, 24 hour snack menu, Gym, Guest laundry, 24 hour reception, Luggage storage, Parking (undercover – extra charge), 312 rooms.

Room Features: Air-conditioning, Smart TV with Chromecast, USB ports, Mini fridge, Tea/coffee making facilities, Ironing facilities, Hair dryer, Safe.

Max Capacity: Queen – 2.



HOTEL INDIGO MELBOURNE ON FLINDERS



King Bed Standard

575 Flinders Lane, Melbourne
MAP PAGE 17

From **\$314***

- ❖ Carefully styled guest rooms boast an extensive range of artworks
- ❖ Savour French cuisine or enjoy an evening cocktail at the Luke Mangan designed, Bistrot Bisou

Location: Situated in Melbourne's CBD, on the corner of Flinders Lane and Spencer Street close to Southern Cross train station and a short walk from the Southbank and South Wharf precincts. Distances: Bourke Street Mall 1.4km.

Property Features: Restaurant, Bar, 24 hour room service, 24 hour reception, 24 hour gym, Laundry/dry cleaning service, Guest laundry, Non smoking, Baggage storage, Parking (on-site – extra charge), Lift, 216 rooms.

Room Features: Air-conditioning, Television, Mini bar, Tea/coffee making facilities, Ironing facilities, Bathrobes, Hair dryer, Safe.

Max Capacity: King Bed Standard/1 King Standard City View/1 King Premium – 2, 2 Double Standard City View – 4.



MELBOURNE ACCOMMODATION

TRAVELODGE HOTEL MELBOURNE, DOCKLANDS



Guest

66 Aurora Lane, Docklands
MAP PAGE 17

From **\$192***

- ❖ All rooms are equipped with kitchenettes
- ❖ Convenient access to the Docklands precinct's waterfront, dining and public transport

Location: In a central position within the Melbourne CBD and Docklands precinct. It is very close to Southern Cross Station, Marvel Stadium, and a short walk from the Melbourne Exhibition Centre and Crown Casino. Distances: Bourke Street Mall 1.5km.

Property Features: Restaurant, Bar, Room service, 24 hour reception, Gym, Guest laundry, Parking (extra charge), 290 rooms.

Room Features: Air-conditioning, Smart TV with Chromecast, Kitchenette, Tea/coffee making facilities, Ironing facilities, Hair dryer, Safe.

Max Capacity: Guest – 3.



VIBE HOTEL MELBOURNE



Urban

1 Queen Street, Melbourne
MAP PAGE 17

From **\$295***

- ❖ Modern hotel with a focus on leisure and lifestyle
- ❖ Contemporary, modern and elegant décor in all rooms
- ❖ Relax and unwind in the fully equipped gym and pool area

Location: Perfectly positioned for Melbourne exploration, the hotel offers Yarra River views, easy access to laneways, cultural icons, dining, shopping, Federation Square, Southbank, Crown Casino, and free CBD trams. Distances: Bourke Street Mall 600m.

Property Features: Pool (indoor), Restaurant, Rooftop bar, Gym, Dry cleaning service, 24 hour reception, Parking (off-site – extra charge), 201 rooms.

Room Features: Air-conditioning, Tea/coffee making facilities, Cable TV, Complimentary movies, Ironing facilities, Hair dryer.

Max Capacity: Urban/Yarra View/Flinders View – 2.



ADINA APARTMENT HOTEL MELBOURNE



Guest 1 Bedroom

189 Queen Street, Melbourne
MAP PAGE 17

From **\$353***

- ❖ Offering well appointed serviced apartments and penthouses
- ❖ Great location grants you a passport to everything on offer in Melbourne
- ❖ High quality appliances, facilities including fully self-contained kitchen

Location: In the heart of the CBD and surrounded by fashionable cafés, restaurants and bars. Distances: Bourke Street Mall 350m.

Property Features: Pool (heated indoor), Restaurant, Room service, Gym, Sauna, Laundry/dry cleaning service, Parking (undercover – extra charge), 155 rooms.

Room Features: Air-conditioning, Mini bar, Docking station, Kitchen with microwave and dishwasher, Laundry, Hair dryer.

Max Capacity: Guest 1 Bedroom – 3, Guest 2 Bedroom – 5.



CROWNE PLAZA MELBOURNE



1 King Standard

1-5 Spencer Street, Melbourne
MAP PAGE 17

From **\$317***

- ❖ Interconnecting rooms ideal for families or groups
- ❖ Spacious rooms with pod coffee machine, large windows and premium amenities
- ❖ Outdoor heated pool and 24/7 fitness centre

Location: In Southbank, close to Docklands precinct, Crown Casino, Melbourne Exhibition and Convention Centre and South Wharf Direct Factory Outlet. Distances: Bourke Street Mall 1.5km.

Property Features: Pool (heated outdoor), Restaurant, Bar, Café, 24 hour room service, Guest lounge, Gym, Laundry/dry cleaning service, 24 hour reception, Non smoking, 432 rooms.

Room Features: Air-conditioning, Smart TV with casting capabilities, Hair dryer, Coffee machine with free pods, Bathrobes and slippers (available on request).

Max Capacity: 1 King Standard/1 King Standard River View – 2, 2 Double Standard Twin – 4.



CROWN PROMENADE MELBOURNE



Standard King

8 Whiteman Street, Southbank
MAP PAGE 17

From **\$275**^{**}

- ❖ Spacious, modern rooms with oversized bathrooms
- ❖ Deck Leisure Centre has a heated indoor pool and outdoor deck area
- ❖ Some of Melbourne's finest dining experiences available

Location: Adjacent to the Crown Entertainment Complex, near vibrant Southbank.
Distances: Bourke Street Mall 1.5km.

Property Features: Pool (heated indoor), Limited room service, Gym, Steam room, Sauna, Laundry/dry cleaning service, 24 hour reception, Valet parking (extra charge), 465 rooms.

Room Features: Air-conditioning, Tea/coffee making facilities, Mini bar, Cable TV, In-room movies (pay to view), Ironing facilities, Hair dryer, Bathrobes, Safe.

Max Capacity: Standard King/Standard City View King/Corner King – 2, Studio – 3, Standard Twin/Standard City View Twin – 4.

[^]Price applies Sun-Fri nights.



LANEWAYS BY OVOLO



Downtown Studio Suite

19 Little Bourke Street, Melbourne
MAP PAGE 17

From **\$385**^{*}

- ❖ In the vibrant heart of Melbourne's laneways, next door to the Princess Theatre
- ❖ Relax in stylish, creatively generous space featuring bold Memphis design
- ❖ Enjoy unique hospitality enhanced by thoughtful complimentary touches

Location: Inspired by Melbourne's hidden laneways, close to Chinatown, the Theatre district, restaurant's, cafés and bars. Distances: Bourke Street Mall 850m.

Property Features: Lobby Wonderbar, Lobby candy station, 24 hour reception, Non smoking, Parking (off-site – extra charge), 43 rooms.

Room Features: Air-conditioning, Tea/coffee making facilities, Smart TV with Chromecast.

Max Capacity: Downtown Studio Suite/Midtown Suite 1 Bedroom – 2, Uptown Suite 2 Bedroom – 4.



QUINCY HOTEL



Quincy

509 Flinders Lane, Melbourne
MAP PAGE 17

From **\$305**^{**}

- ❖ 241 rooms punctuated by colour and cosy features
- ❖ Rooftop pool with views of Melbourne CBD
- ❖ Salted Egg restaurant is born from the vivid origins of South East Asian cuisine

Location: On iconic Flinders Lane close to dining, shopping and contemporary galleries.
Distances: Bourke Street Mall 450m.

Property Features: Pool (heated indoor), Restaurants and bars (3), 24 hour room service, Gym, Lift, 24 hour reception, 241 rooms.

Room Features: Air-conditioning, Mini bar, Tea/coffee making facilities, In-room movies, Ironing facilities, Hair dryer, Safe.

Max Capacity: Quincy/Quincy Plus/Altitude – 2.



MELBOURNE ACCOMMODATION

RENDEZVOUS HOTEL MELBOURNE



Commerce

328 Flinders Street, Melbourne
MAP PAGE 17

From **\$278***

- Walking distance to the city's top attractions, restaurants and entertainment
- Rooms are modern and tastefully furnished with period pieces
- Indulge in high tea available on weekends

Location: On Flinders Street overlooking the Yarra River and a short walk to the station. Distances: Bourke Street Mall 500m.

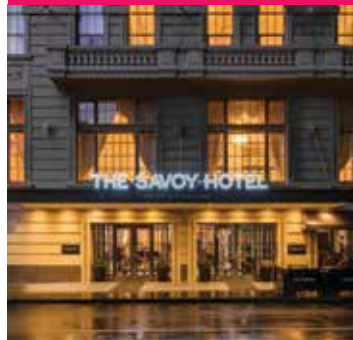
Property Features: Restaurant, Bar (cocktail), 24 hour room service, Gym, Laundry/dry cleaning service, 24 hour reception, Non smoking, Parking (offsite – extra charge), 340 rooms.

Room Features: Air-conditioning, Mini bar, Tea/coffee making facilities, Smart TV, Ironing facilities, Hair dryer, Safe.

Max Capacity: Commerce – 2, Perkins – 3.



THE SAVOY HOTEL ON LITTLE COLLINS



Savoy Guest

630 Little Collins Street, Melbourne
MAP PAGE 17

From **\$303***

- A beautiful Art Deco-style hotel built in 1866
- Stylish guest rooms have plush furnishings and retro bathrooms
- Enjoy a cocktail in the elegant lobby bar, reminiscent of a bygone era

Location: In Melbourne CBD and a short distance from Collins Street. Distances: Bourke Street Mall 1km.

Property Features: Restaurant, Bars (2), 24 hour room service, Gym, Day spa, 24 hour reception, Parking (extra charge), 163 rooms.

Room Features: Air-conditioning, Mini bar, Tea/coffee making facilities, Smart TV with Chromecast, Docking station, Ironing facilities, Hair dryer, Safe.

Max Capacity: Savoy Guest – 3.



RYDGES MELBOURNE



Rydges King

186 Exhibition Street, Melbourne
MAP PAGE 17

From **\$271*^**

- Premium location to explore Melbourne, in the heart of the theatre district
- Exceptional facilities: heated rooftop pool, 24/7 gym, bar and restaurant
- Rooms and spacious suites with modern comforts and guest focused amenities

Location: Located in the heart of Melbourne's vibrant theatre district, you'll be at the centre of it all, with easy access to Melbourne's iconic major event venues including the MCG and Melbourne Park. Distances: Bourke Street Mall 900m.

Property Features: Rooftop pool (heated outdoor), Restaurant, Bar, 24 hour room service, 24 hour gym, Lifts, Parking (undercover – extra charge), 370 rooms.

Room Features: Air-conditioning, Mini bar, Smart TV, USB charging points, Kitchenette (Deluxe Suite), Tea/coffee making facilities, Laundry facilities (Deluxe Suite), Ironing facilities, Bathroom amenities, Hair dryer, Safe.

Max Capacity: Rydges King/Rydges Twin/Rydges Corner King/Rydges Deluxe Suite – 2, Rydges Twin King Suite – 4.

^Price applies Sun-Fri nights.



1 HOTEL MELBOURNE



King City

9 Maritime Place, Docklands
MAP PAGE 17

From **\$387*^**

- Recognised by the MICHELIN Guide with a MICHELIN Key
- Sustainability focused. Designed and constructed to make the most of original features, reclaimed materials, and decorated with over 7000 plants

Location: Situated on the Yarra River, the hotel provides breathtaking waterfront views and offers easy access to public transport, shopping, sporting venues and Melbourne CBD. Distances: Bourke Street Mall 2km.

Property Features: Pool (heated indoor), Restaurant, Bar, Room service, Day spa, 24 hour gym, Laundry service, Lifts, Parking (extra charge), 277 rooms.

Room Features: Air-conditioning, Mini bar, Smart TV, Yoga mat, Filtered water taps, Tea/coffee making facilities, Ironing facilities, Bathrobes, Hair dryer, Safe.

Max Capacity: King City – 3, King River Reserve – 2, Twin City/Twin River Reserve – 4.

^Price applies Sun-Fri nights.



MELBOURNE ACCOMMODATION

CROWN METROPOL MELBOURNE



Luxe King

8 Whiteman Street, Southbank
MAP PAGE 17

From **\$295**^{*^}

- ❖ Combines stylish, contemporary rooms with the latest amenities
- ❖ Relax amongst the city skyline in the infinity pool on the 27th floor
- ❖ A family friendly vibrant hotel in the heart of the bustling Melbourne CBD

Location: Close to the CBD and Melbourne's shopping, dining and cultural precincts. Distances: Bourke Street Mall 1.5km.

Property Features: Pool, Restaurant, Bar, Limited room service, Gym, 24 hour reception, Valet parking (extra charge), 658 rooms.

Room Features: Air-conditioning, Mini bar, Cable TV, Virtual compendium, Ironing facilities.

Max Capacity: Luxe King/City Luxe/High Floor Luxe King/Urban Luxe – 3, Luxe Twin – 4, Loft – 2.

[^]Price applies Sun-Fri nights.



VIBE HOTEL MELBOURNE DOCKLANDS



Guest

443 Docklands Drive, Docklands
MAP PAGE 17

From **\$217**^{*}

- ❖ Storehouse Docklands offers farm-to-table fare
- ❖ Rooms feature floor to ceiling windows with city or harbour views
- ❖ Melbourne's free tram service has a stop at the front of the hotel

Location: Within walking distance of Marvel Stadium and an array of entertainment attractions, cultural experiences, dining options, and world-class shopping along the iconic Docklands waterfront. Distances: Bourke Street Mall 2.9km.

Property Features: Rooftop pool (heated winter only), Rooftop spa, Restaurant, Café, Bar, 24 hour room service, 24 hour reception, 24 hour fitness centre, Steam room, Dry cleaning service, Non smoking, Baggage storage, Parking (secure off-site – extra charge), Lift, 273 rooms.

Room Features: Floor-to-ceiling windows, Individual controlled air-conditioning, LCD TV with Chromecast, USB charging points, Tea/coffee making facilities, Lighted makeup mirror, Ironing facilities, Work desk, Hair dryer, Safe.

Max Capacity: Guest/Deluxe – 2.



CROWN TOWERS MELBOURNE



Deluxe King



Premier King

8 Whiteman Street, Southbank
MAP PAGE 17

From **\$359**^{*^}

- ❖ An inner-city oasis with five-star facilities
- ❖ Lavishly appointed rooms with impeccable attention to detail
- ❖ Enjoy the 25 metre heated pool and poolside refreshments

Location: On the banks of the Yarra River, adjacent to the Crown Casino Complex. Distances: Bourke Street Mall 1.5km.

Property Features: Pool (heated indoor), Restaurant, Bar, 24 hour room service, Crown Spa (day spa), Gym, 24 hour reception, Valet parking (extra charge), 481 rooms.

Room Features: Air-conditioning, In-room tablet, In-room movies (pay to view), Cable TV, Tea/coffee making facilities, Mini bar, Ironing facilities, Hair dryer, Safe.

Max Capacity: Deluxe King/Premier King/Premier Suite/Premier Club Suite/Executive Suite/Executive Club Suite/1 Bedroom Deluxe Villa/1 Bedroom Crystal Villa – 2, Studio – 3, Deluxe Twin/Premier Twin/2 Bedroom Crystal Villa/2 Bedroom Tower Suite – 4.

[^]Price applies Sun-Fri nights.



MELBOURNE ACCOMMODATION

LANSON PLACE PARLIAMENT GARDENS



Hotel King

502 Albert Street, Melbourne
MAP PAGE 17

From **\$293***

- ❖ Unwind in the 20 metre indoor heated swimming pool and spa
- ❖ Modern, comfortable rooms, some feature stunning park views
- ❖ Chronicle 502 Bar & Dining celebrates Australia's finest seasonal flavours

Location: Only a short walk or tram ride to the city's theatres, iconic laneways, and world-renowned shopping areas, yet perfectly positioned by serene parks and green spaces such as Carlton Gardens and Parliament Gardens. Distances: Bourke Street Mall 1.1km.

Property Features: Pool (heated indoor), Restaurant, Bar, 24 hour room service, 24 hour reception, 24 hour fitness centre, Laundry/dry cleaning services, Parking (undercover off-site – extra charge), Lift, 137 rooms.

Room Features: Air-conditioning, Smart TV with streaming services, USB charging points, Mini bar, Kitchenette (Studio), Microwave, Nespresso machine, Tea/coffee making facilities, Dining table/workstation, Washing machine/dryer (Studio), Ironing facilities, Pillow menu, Bathrobes, Hair dryer, Safe.

Max Capacity: Hotel – 2, Studio – 3.



Studio King



PAN PACIFIC MELBOURNE



Deluxe King

2 Convention Centre Place, South Wharf
MAP PAGE 17

From **\$335***

- ❖ Close to renowned restaurants and the direct factory shopping outlets
- ❖ Rooms and suites feature floor-to-ceiling windows with city and bay views
- ❖ Complimentary breakfast, drinks, canapés in exclusive lounge for Club Rooms

Location: Situated in the South Wharf precinct, neighbouring top restaurants and DFO South Wharf. The hotel is an easy walk to free tram zone, Marvel Stadium and Bourke Street Mall. Distances: Bourke Street Mall 1km.

Property Features: Restaurant, Bar, Café, 24 hour room service, Laundry/dry cleaning service, Non smoking, 24 hour gym, Parking (extra charge), 396 rooms.

Room Features: Air-conditioning, Cable TV, Mini bar, Tea/coffee making facilities, Ironing facilities, Separate shower and bathtub, Jo Malone amenities, Hair dryer, Safe.

Max Capacity: Deluxe King/Pacific Club/Premier King City Skyline – 3.



Premier King City Skyline



* FROM PRICES ARE A GUIDE ONLY, subject to change and availability and are in Australian Dollars. Prices are per room per night for 2 people, unless otherwise specified and based on the lowest room category for travel in low season. For full terms and conditions, refer to the Booking Conditions on the inside back cover of this brochure.



Twelve Apostles

GEELONG & GREAT OCEAN ROAD

Victoria's largest regional city, Geelong has so much to offer – from its stunning waterfront and urban precinct to the craft breweries and hole-in-the-wall cafés. It is also a fabulous starting point to reach the Great Ocean Road, one of Australia's great touring routes. A journey along the Great Ocean Road winds through laid-back coastal towns, past stunning beaches, national parks and iconic attractions. The most famous attraction along this route is the striking limestone rock stacks known as the Twelve Apostles.



SEE

- Delve into Geelong's history at the National Wool Museum

DO

- For spectacular views, climb to the top of Australia's oldest surviving lighthouse at Cape Otway

EAT & DRINK

- Treat your tastebuds to the nation's best sponge cake at Freshwater Creek Cakes in the little farming village of Freshwater Creek

REF.	PROPERTY	PAGE	REF.	PROPERTY	PAGE
1	Discovery Parks – Warrnambool	27	2	Holiday Inn & Suites Geelong	27

HOLIDAY INN & SUITES GEELONG

40 Ryrie Street, Geelong
MAP PAGE 27

From \$214*

- ❖ Spacious and bright guest rooms with city or bay views
- ❖ Maestro restaurant and bar showcasing locally sourced produce
- ❖ Relax in the 20 metre heated indoor lap pool

Location: In the heart of Geelong CBD, within walking distance of GMHBA Stadium Kardinia Park, and Geelong Arts Centre. It is an ideal base to explore the Bellarine Peninsula as well as Victoria's spectacular Great Ocean Road. Distances: Geelong waterfront 800m.

Property Features: Pool (heated indoor), Restaurant, Bar, 24 hour room service, 24 hour reception, Fitness centre, Laundry/dry cleaning services, Parking (undercover – extra charge), Lift, 180 rooms.

Room Features: Air-conditioning, Smart TV with streaming services, Mini fridge, Tea/coffee making facilities, Ironing facilities, Pillow menu, Hair dryer, Safe.

Max Capacity: Standard – 2, Premium – 4.



DISCOVERY PARKS – WARRNAMBOOL

25 Pertobe Road, Warrnambool
MAP PAGE 27

From \$128*

- ❖ Families will love the swimming pool and children's playground
- ❖ Spacious, well designed cabins with balconies or patios
- ❖ Surrounded by landscaped gardens with access to local nature reserves

Location: Within driving distance of Port Fairy and the Twelve Apostles. Distances: Beach 200m, Town centre 1.5km.

Property Features: Pool, Camp kitchen, Barbecue area, Kids Club (seasonal), Children's playground, Movie/games room, Convenience store, Guest laundry, 39 rooms.

Room Features: Air-conditioning, Balcony, Kitchen, Tea/coffee making facilities, Parking (free).

Max Capacity: Standard Motel – 4, Superior 2 Bedroom Unit/Superior 2 Bedroom Cabin/Deluxe 2 Bedroom Cabin – 5, Superior Spa Cabin – 2.



*FROM PRICES ARE A GUIDE ONLY, subject to change and availability and are in Australian Dollars. Prices are per room per night for 2 people, unless otherwise specified and based on the lowest room category for travel in low season. For full terms and conditions, refer to the Booking Conditions on the inside back cover of this brochure.

YARRA VALLEY

The Yarra Valley is a food and wine lover's dream with endless vineyard views, under an hour's drive from Melbourne. Cool climate wines are produced by over 60 wineries including TarraWarra Estate, one of the country's most famous labels. The region has an outstanding reputation for producing quality gourmet food. Stock up on seasonal produce at farm gates, orchards and roadside stalls.

SEE

- View an artist at work in one of the many studios dotted throughout the Yarra Valley

DO

- Soar high above the wineries on a thrilling hot air balloon ride

EAT & DRINK

- Enjoy wine tasting at Rochford Wines
- Linger over a long lunch at Coombe Yarra Valley restaurant overlooking beautiful landscape gardens

WHAT'S ON

Healesville Festival

8 to 10 May

Tesselaar Tulip Festival

12 September to 11 October



Dominique Portet Winery



REF.	PROPERTY	PAGE
1	Chateau Yering Hotel	29
2	Yarra Gables Motel	29
3	Yarra Valley Grand Hotel	29
4	Yarra Valley Lodge	29



FOOD & WINE TASTING

Have your senses captivated at Rochford Wines and taste award-winning wines and delicious modern Australian cuisine while surrounded by stunning Yarra Valley views. Create a memorable experience while you wine and dine in the heart of the Yarra Valley. Enjoy a two course lunch that celebrates the best of local seasonal produce. The knowledgeable staff will guide you through a tasting of some of the winery's most acclaimed wines.

Includes:

- Tasting of 4 wines at the cellar door
- 2 course lunch package and a glass of wine
- Children dine from children's menu with a soft drink

Operator: Rochford Wines

Open: Daily 11am – 4pm

Wine tasting not suitable for children under 18 yrs.

	Adult	Child 2-12 yrs
Wine Experience with Lunch	\$70*	\$34*



ÉTOILE UNVEILED & CHEF'S TABLE LUNCH

Indulge in an exclusive Chandon experience, beginning with a private tasting of the luminous Étoile masterblend. Discover the artistry behind this prestige multi-vintage sparkling wine before savouring a seasonal three-course lunch of regional produce, perfectly paired with Chandon wines. Enjoy preferential window seating in the elegant restaurant, offering breathtaking vineyard views and personalised service. Immerse yourself in the opulence of Étoile for an unforgettable journey of culinary excellence and sparkling sophistication.

Includes:

- Guided wine tasting
- 3 course regional menu lunch with paired wines

Operator: Domain Chandon

Duration: 3 hours

Departs: Daily from Chandon Cellar Door 12pm, 1pm

Not suitable for children under 18 yrs.

	Adult
Wine Experience with Lunch	\$190*



YARRA VALLEY SUNRISE HOT AIR BALLOON FLIGHT

Float above Yarra Valley's vineyards and misty valleys at sunrise, guided by expert pilots. Drift with the breeze, spot kangaroos at dawn, and watch Victoria's oldest wine region awaken – just 50 minutes from Melbourne.

Includes:

- Approximate 1 hour flight over the Yarra Valley
- In-flight GoPro photos and Luxe Balloon Magnet
- Optional buffet breakfast and return transfers from Melbourne CBD

Operator: Global Ballooning

Duration: 3 – 4 hours

Departs: Daily from Balgownie Estate, Yarra Glen 1 hour and 30 minutes before sunrise

Not suitable for children under 6 yrs.

	Adult	Child 6-12 yrs
Flight Only	\$495*	\$429*
With Breakfast	\$540*	\$454*
With Breakfast & Transfers	\$570*	\$484*

*PRICES ARE A GUIDE ONLY, subject to change and availability and are in Australian Dollars. Prices are per person, unless otherwise specified and based on travel in low season. For full terms and conditions, refer to the Booking Conditions on the inside back cover of this brochure.

YARRA VALLEY GRAND HOTEL



Standard



Managers House

9 Bell St Service Rd, Yarra Glen
MAP PAGE 28

From **\$221***

- ◆ Individually decorated hotel rooms are situated within the original landmark historical hotel
- ◆ Managers House is great for families and friends travelling together

Includes continental breakfast daily and bottle of wine on arrival.

Location: Built in 1888, the hotel is housed in a heritage listed building in the heart of Yarra Glen. Ideally located for exploring the local wine growing region, surrounded by over 90 cellar doors, award winning breweries, distilleries, farmgates, walks, trails, shops, cafés and more. Distances: Town centre 170m, Melbourne CBD 49.8km.

Property Features: Restaurant, Bar, Limited reception, Parking (free), Non-smoking, 15 rooms.

Room Features: Pool (Managers House), Air-conditioning, Flat screen TV, Full kitchen facilities (Managers House), Mini bar, Tea/coffee making facilities, Laundry (Managers House), Ironing facilities, Hair dryer.

Max Capacity: Standard/Premium/Yarra/Tower Suite/Melba Suite/1 Bedroom Apartment – 2, Balcony Suite – 2 adults/2 children, 2 Bedroom Apartment – 4, Managers House – 10.



FREE

CHATEAU YERING HOTEL



Melba Suite

42 Melba Highway, Yering
MAP PAGE 28

From **\$349***

- ◆ Historic homestead offering luxury accommodation
- ◆ Suites are all individually decorated with fine furnishings
- ◆ Enjoy fine dining at Eleonore's Restaurant

Location: Located in the heart of the Yarra Valley overlooking the Yarra River. Distances: Town centre 2km, Melbourne CBD 52km.

Property Features: Pool, Restaurant, Café, Room service, Guest lounge, Laundry/dry cleaning service, Tennis court, 24 hour reception, Non smoking, Parking (free), 32 rooms.

Room Features: Air-conditioning, Balcony, Mini bar, Tea/coffee making facilities, Ironing facilities, Spa bath (except Melba Suite), Bathrobes, Hair dryer.

Max Capacity: Melba Suite/Yarra Suite/Stable Suite/Yering Suite – 2.



FREE

YARRA GABLES MOTEL



Standard

55 Maroondah Highway, Healesville
MAP PAGE 28

From **\$315***

- ◆ Features a range of rooms for couples, families and small groups
- ◆ Rooms are spacious and are set in peaceful surroundings
- ◆ Complete with cooking facilities and garden views

Location: Ideally located in the heart of the Yarra Valley. Distances: Town centre 1.5km, Melbourne CBD 59km.

Property Features: Parking (free), Non smoking, Baggage storage, 8 rooms.

Room Features: Air-conditioning, Balcony, Kitchenette with microwave, Tea/coffee making facilities, Cable TV, Ironing facilities, Two Bedrooms (Family rooms only), Three Bedrooms (Cottage and Lodge only), Hair dryer.

Max Capacity: Standard/Family – 4, Queen Spa – 2, Cottage/Lodge – 6.



FREE

YARRA VALLEY LODGE



2 Heritage Avenue, Chirnside Park
MAP PAGE 28

From **\$250***

- ◆ Positioned at the gateway to Victoria's premier food and wine region
- ◆ Bella Restaurant's menu emphasises a 'paddock to plate' experience
- ◆ Spacious rooms have private balconies or terraces with stunning views

Location: Within the grounds of the Heritage Estate. Distances: Town centre 5.5km, Melbourne CBD 43km.

Property Features: Restaurant, Bars (2), 24 hour reception, Parking (undercover security – free), Access to The Heritage Golf & Country Club, 102 rooms.

Room Features: Air-conditioning, Balcony, Tea/coffee making facilities, Mini bar, In-room movies (pay to view), Cable TV, Bathrobes, Ironing facilities, Hair dryer, Safe.

Max Capacity: Lodge King – 3, Lodge Twin – 4.



FREE

MORNINGTON PENINSULA & PHILLIP ISLAND

Just a 90 minute drive from Melbourne and you're on the Mornington Peninsula. This idyllic destination is a place of breezy seaside villages, art galleries, golf courses and great food and wine. Phillip Island is known for stunning beaches, wildlife encounters, outdoor adventure and sporting events.

SEE

- Take in the views over the Southern Peninsula and Bass Strait from Cape Schanck Lighthouse
- See the little penguins as they waddle up the beach from the sea

DO

- Get lost in the hedge mazes at Ashcombe Maze and Lavender Gardens, Shoreham

EAT & DRINK

- Enjoy wine tasting at Ten Minutes by Tractor
- Indulge in delicious chocolates at Pannys Phillip Island Chocolate Factory

WHAT'S ON

Mornington Winter Music Festival
5 to 8 June

Australian Motorcycle Grand Prix
23 to 25 October



Portsea Pier, Mornington Peninsula

Visit Victoria



Phillip Island Nature Park – Penguin Reserve

Visit Victoria

REF.	PROPERTY	PAGE
1	InterContinental Sorrento Mornington Peninsula	31
2	Peninsula Hot Springs	31
3	Phillip Island Apartments	31
4	Quarters at Flinders Hotel	31



FERRY TRANSFERS

Crossing Melbourne's beautiful Port Phillip Bay, the 40 minute car and passenger ferry crossing is a great alternative to the three hour drive around. The ferry connects the Mornington Peninsula to the Bellarine and Great Ocean Road. The bay crossing is a must do attraction when exploring the Victorian coast.

Includes:

- One way ferry transfer

Operator: Searoad Ferries

Duration: 40 minutes

Departs: Daily from Sorrento Pier or Queenscliff Wharf every hour between 7am – 6pm

	Adult	Child 4-15 yrs
Car & 1 Passenger	\$86*^+	N/A
Passenger	\$20*^	\$15*^

^Prices based on one-way travel. +Price based on a car up to 5.5 metres.



PENINSULA HOT SPRINGS

Relaxation begins the moment you schedule your visit to the Bath House, a place where families and friends can bathe, unwind, and connect with nature, while exploring 50 different bathing experiences. Sink into natural geothermal mineral waters that flow from 637 metres below ground into the pools and private baths.

Includes:

- Revitalise Bath House bathing
- Over 50 bathing experiences

Operator: Peninsula Hot Springs

Open: 7am – 10pm daily

	Adult	Child 5-15 yrs
Revitalise Bath House Admission	\$80*	\$55*



TERROIR MASTERCLASS

Discover the unique elements that define the wines crafted at Ten Minutes by Tractor Estate. Head to the private tasting room, where you'll have the opportunity to taste two limited release wines as well as a selection of six current release wines. Learn about the history of the region and discover what makes the Mornington Peninsula the ideal site to produce Pinot Noir and Chardonnay.

Includes:

- 1 hour wine masterclass
- Tasting of eight wines

Operator: Ten Minutes by Tractor

Duration: 1 hour

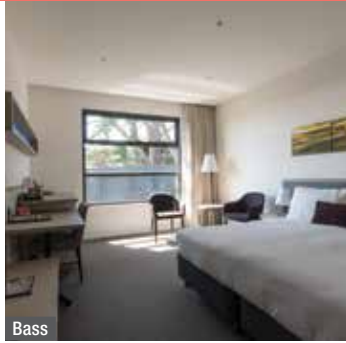
Departs: Daily from Ten Minutes by Tractor Cellar Door at 11am

Not suitable for children under 18 yrs.

	Adult
Winery Tour	\$120*

MORNINGTON PENINSULA & PHILLIP ISLAND ACCOMMODATION

QUARTERS AT FLINDERS HOTEL



Bass

23 Cook Street, Flinders
MAP PAGE 30

From **\$285***[^]

- ◆ Architecturally designed hotel boasting stylish rooms
- ◆ Generous mini bars curated with the best Mornington Peninsula wines
- ◆ Restaurant showcases the best of local, seasonal produce

Includes continental breakfast daily.

Location: Nestled in the heart of the historic Flinders coastal village, on the Mornington Peninsula only 1.5 hours drive from Melbourne. Close to many famous attractions in the region including the Peninsula Hot Springs, Strawberry farm, Mornington Peninsula Chocolates, and the beautiful Cape Schanck. Distances: Beach 900m, Town centre 100m, Melbourne CBD 98.6km.

Property Features: Restaurant, Bar, Limited reception, Parking (free), Lift, 40 rooms.

Room Features: Air-conditioning, Smart TV with streaming services, Mini bar, Tea/coffee making facilities, Ironing facilities, Bathrobes, Hair dryer, Safe.

Max Capacity: Bass/Bauer/Westall/Flinders – 3.

[^]Price applies Sun-Fri nights.



INTERCONTINENTAL SORRENTO MORNINGTON PENINSULA



Cosy Heritage Wing

23 Constitution Hill Road, Sorrento
MAP PAGE 30

From **\$457***[^]

- ◆ Located in the heart of Sorrento with sweeping views of Port Phillip Bay
- ◆ Wide choice of rooms and suites with contemporary furnishings
- ◆ Choice of four dining venues

Includes full breakfast daily and in-room non-alcoholic bar.

Location: Next to Sorrento Front Beach and nestled within the historical Sorrento coastal centre, featuring cafés, restaurants, shopping and art galleries. Distances: Sorrento Front Beach 600m, Town centre 300m, Melbourne CBD 107km.

Property Features: Pool (outdoor – heated), Restaurants (4), Bar, Day spa, Gym, Room service, Laundry/dry cleaning service, 24 hour reception, Parking (undercover), 108 rooms and suites.

Room Features: Air-conditioning, Balcony, Tea/coffee making facilities, Coffee pod machine, Complimentary in room bar, Ironing facilities, Bathrobes, Hair dryer, Safe.

Max Capacity: Cosy Heritage Wing/Premium Terrace – 2, Classic Riley Lane Wing/1 Bedroom Terrace Suite – 2 adults/1 child.

[^]Price applies Sun-Thu nights.



PENINSULA HOT SPRINGS



Glamping Tent

14 Springs Lane, Fingal
MAP PAGE 30

From **\$770***[^]

- ◆ En suited glamping tents nestled in the natural surrounds of the hot springs
- ◆ Award-winning natural geothermal mineral springs and day spa
- ◆ Designed for pure relaxation

Includes full breakfast daily and complimentary 45 minute guided wellness experience of your choice.

Location: A coastal oasis surrounded by native bushland and plants about a 90 minute drive from the Melbourne CBD. Distances: Beach 6.6km, Town centre 6.3km, Melbourne CBD 100km.

Property Features: Pool, Restaurant, Bar, 24 hour room service, Day spa, Sauna, Guest laundry, Parking (extra charge), 20 rooms.

Room Features: Air-conditioning, Private deck, Mini fridge, Tea/coffee making facilities, Ironing facilities, Hair dryer, Safe.

Max Capacity: Garden View Glamping Tent/Lake View Glamping Tent/Springs/Peninsula Suite – 2, 3 Bedroom Eco Lodge – 6, 4 Bedroom Eco Lodge – 8.

[^]Price applies Sun-Thu nights.



PHILLIP ISLAND APARTMENTS



One Bedroom

9-11 Bass Avenue, Cowes
MAP PAGE 30

From **\$304***

- ◆ Spacious apartments with private balcony or patio
- ◆ Families will love the outdoor facilities including the pool, spa and bbq area
- ◆ Apartments have smart TVs with casting to access streaming accounts

Location: Located in the main town on Phillip Island, a short drive to all major attractions. Right near the heart of Cowes, just a couple of minutes' walk from shops, cafés, restaurants and a supermarket strip along Thompson Avenue. Distances: Beach 250m, Town centre 200m, Melbourne CBD 142km.

Property Features: Heated pool and spa, Barbecue area, Non smoking, Parking (free), 31 rooms.

Room Features: Air-conditioning, Kitchen, Tea/coffee making facilities, Smart TV, Laundry facilities, Ironing facilities.

Max Capacity: One Bedroom – 2, Two Bedroom – 4, Three Bedroom Standard/Three Bedroom Executive – 6.



TASMANIA

Tasmania enchants with its pristine wilderness, vibrant culinary scene and spirit of adventure. Stretching from the misty peaks of Cradle Mountain through to windswept shores of Bruny Island, there is something in Tasmania for everyone. Feast on fresh farm produce, cruise along the Gordon River, and wander through historic sites. Head to Tasmania to uncover hidden gems and unforgettable experiences at every turn.





HOBART

Steps away from the Hobart waterfront lie the historic neighbourhoods of Salamanca and Battery Point. Discover heritage homes on a self-guided walk and have a drink at the famous Shipwright's Arms Hotel. Descend Kelly's Steps to the sandstone warehouses of Salamanca Place and discover the famous Salamanca Markets on every Saturday.



BRUNY ISLAND

Bruny Island is an easy day trip from Hobart. While the scenery is remarkable, the island is also well known for its locally crafted delights such as cheese, chocolate, honey, beer, and whisky. Jump on a cruise to spot seals, dolphins, and maybe even whales. On land explore Australia's oldest lighthouse and lookout for the rare white wallaby.



LAUNCESTON

Located in Northern Tasmania, Launceston is a quaint city known for its colonial architecture, thriving food and wine scene and proximity to stunning natural attractions. Explore the towering cliffs of Cataract Gorge or join the Tamar Tasting Trail through boutique wineries and artisan producers showcasing the region's rich flavours and hospitality.



CRADLE MOUNTAIN

Cradle Mountain is the jewel in Tasmania's crown! Just 90 minutes from Devonport, the imposing summit proudly overlooks Dove Lake, one of the premier walking tracks in the state. It's a haven for nature lovers with incredible scenery and its colours change with every season – glowing golden in autumn and gleaming white in winter.



BAY OF FIRES

This stunning coastal region spans over 30 kilometres of white, sandy beaches, crystal clear water and iconic, orange-hued boulders that give the region its name. The bay is a popular destination for camping, walking, hiking and watersports. The area is also known for its delicious selection of local seafood.



FREYCINET NATIONAL PARK

With dramatic pink granite peaks, secluded bays and white sandy beaches, Freycinet is a coastal paradise. Coles Bay set against The Hazards peaks is the perfect gateway to the park. Discover world-renowned Wineglass Bay – its breathtaking turquoise waters and pristine sand, make it one of the most photographed natural attractions.

PLANNING AHEAD

Tasmania is a wonderful place to visit all year round. Before you begin your next trip, make sure to read our helpful travel information, to ensure you make the most of your time in the Apple Isle of Australia.



Styx Valley, Styx River Conservation Area

Tourism Tasmania/Emilie Ristevski

WHEN TO GO

This small island boasts a multitude of microclimates including rainforest, mountain and maritime.

Spring and summer are great times to visit when the weather is milder and more conducive to outdoor activities like hiking.

Autumn is a stunning season, when the trees begin to change colour and the falling leaves make colourful carpets.

Winter turns parts of the island into a snowy wonderland and surprisingly, this is a great time for festivals and events or for curling up by the fire with a glass of local whisky or wine.

GETTING AROUND

BY CAR

Take the time to explore and discover as you make your way through Tasmania by road. Tasmania is the perfect destination for a driving holiday.

We offer a selection of suggested driving itineraries, providing you with the freedom to discover some of the highlights of Tasmania at your own pace. See pages 6 to 7 for car hire options and pages 38 to 39 for Self Drive Holidays.

WATER SAFETY

Australia has some of the world's best beaches, however care and caution should be exercised at all times. Please remember to swim between the red and yellow flags and listen to instructions from lifesavers and lifeguards.

NATIONAL & ATTRACTION PARK PASSES

All visitors must purchase a pass prior to entering Tasmania's national parks. As this fee is not payable directly to the accommodation or tour operator, and because there are numerous options available, this fee is not included in the prices featured for accommodation and tour listings in this brochure, unless otherwise specified. For details on the various options available and how to purchase passes, visit parks.tas.gov.au/explore-our-parks/know-before-you-go/park-passes-and-entry-fees.

TEMPERATURE & RAINFALL

Hobart	J	F	M	A	M	J	J	A	S	O	N	D
Temperature (max °C)	23	23	19	17	14	12	11	13	14	16	18	21
Average rainfall (mm)	40	30	50	30	30	40	40	50	40	40	40	50

Launceston	J	F	M	A	M	J	J	A	S	O	N	D
Temperature (max °C)	25	25	23	19	16	13	13	14	16	18	20	23
Average rainfall (mm)	46	30	39	51	65	69	78	86	66	50	53	47

Cradle Mountain	J	F	M	A	M	J	J	A	S	O	N	D
Temperature (max °C)	16	17	14	10	8	5	4	5	8	10	13	15
Average rainfall (mm)	149	121	149	204	275	270	315	301	270	252	205	181

Stanley	J	F	M	A	M	J	J	A	S	O	N	D
Temperature (max °C)	20	20	19	17	14	12	12	13	14	15	17	19
Average rainfall (mm)	42	47	50	76	92	105	117	103	86	86	65	62

Strahan	J	F	M	A	M	J	J	A	S	O	N	D
Temperature (max °C)	21	21	20	17	15	13	12	13	14	16	18	19
Average rainfall (mm)	104	66	105	150	155	167	180	189	160	140	115	120

EXPERIENCES YOU'LL LOVE

The best part of any journey is the experiences you have along the way, leaving you with memories to relive long after the holiday is over.

Tasmania has countless amazing things to see and do. Here are some of our favourites to inspire your wanderlust.





Maria Island

Tourism Tasmania/Stat Gibson

TASSIE'S GREAT WALKS

Tasmania is home to some of the most spectacular walks Australia has to offer, with trails and hikes to suit all fitness levels and interests. The most popular walks include Wineglass Bay, Dove Lake Circuit, Cradle Mountain Huts, Bay of Fires and Maria Island. Many tracks have been outfitted with boardwalks for part or the entire way.



Gordon River, West Coast

Supplied Courtesy of RACT Destinations

CRUISE THE GORDON RIVER

Cruise along the majestic Gordon River and delve into the Tasmanian Wilderness World Heritage Area, often shrouded in fog and mist, the shoreline casts a perfect reflection on the river. Explore Heritage Landing with elevated boardwalks that weave through the temperate rainforest. Discover Sarah Island and the stories of the convicts who called it home.



Port Arthur Historic Site

Tourism Tasmania/Alexander Grant

PORT ARTHUR HISTORIC SITE

This UNESCO Heritage Listed Site is one of the most popular attractions in Tasmania and was once home to one of the most brutal penal colonies in Australia. Set on 146 hectares of spectacular landscape with over 30 historic buildings, the immaculately maintained site is best visited with a guide who will explain its fascinating history.



Dark Mofo, Hobart

Tourism Tasmania/Adam Gibson

FESTIVALS & EVENTS

Tasmania loves a celebration – winter, chocolate, whisky, you name it. Highlights include Hobart's Dark Mofo during the winter solstice with its signature event, the Nude Solstice Swim. Other favourites: Huon Valley Mid-Winter Festival, Devonport Jazz Festival, Festival of Voices, and Chocolate Winterfest for the sweet-toothed. Festivals abound year-round!



Tourism Tasmania/Rob Burnett

YOU LITTLE DEVIL

No trip to Tasmania would be complete without getting up close – but not too close – to a Tassie Devil. Devils @ Cradle sanctuary, located on the edge of the Cradle Mountain National Park, has a walk-through enclosure providing the opportunity for 360-degree viewing of the feeding activity. For a peek behind the scenes, there is also a guided Sunset Experience.



Museum of Old and New Art (Mona)

MONA

The Museum of Old and New Art (Mona) in Hobart hosts Australia's largest private art collection, including a range of ancient, Egyptian mummies. It's well known for its controversial and thought-provoking artwork. After browsing the museum, enjoy lunch or a glass of wine at one of the several dining options or enjoy a drink at the Void bar.

SELF DRIVE HOLIDAYS

There's no better way to discover Tasmania than on a self drive holiday. Travelling by road is one of the best ways to explore and our selection of hand-crafted itineraries will take you to the must-see locations. Each itinerary incorporates accommodation and car hire, while some also include local experiences.

We have selected some of our favourites from the range of flexible self drive itinerary options available. Itineraries can be tailored to suit your individual needs and requirements by including extra nights, alternative vehicle types, accommodation upgrades, as well as local tours and cruises.

To create your own dream road trip, simply contact us and we will craft a personalised self drive holiday to suit you.

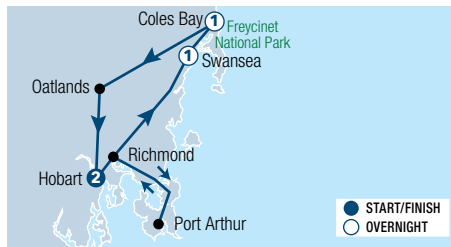


Mayfield Bay

Tourism Tasmania/Pete Harmsen



Wineglass Bay, Freycinet National Park



TASMAN ESCAPE 5 DAYS

Day 1: Hobart

Collect your vehicle on arrival in Hobart. The rest of the day is free to explore the city. Overnight at Travelodge Hobart.

Day 2: Hobart to Swansea – 231km

Head to Port Arthur, stopping at the charming colonial village of Richmond on the way. Spend time exploring the Port Arthur Historic Site (own expense) before continuing your drive along the coast to Swansea. Spend the night at Swansea Cottages & Lodge Suites.

Day 3: Swansea to Freycinet National Park – 60km (BL)

Head to Freycinet National Park to join a morning cruise on Wineglass Bay before the remainder of the

day is free to explore this spectacular region. Spend the night at Freycinet Lodge.

Day 4: Freycinet National Park to Hobart – 200km (B)

Heading back to Hobart today, drive inland along the Heritage Highway passing through Campbell Town, Ross and Oatlands. Conclude your journey by following the Midland Highway over and along the River Derwent. Return to Travelodge Hobart for a final night stay.

Day 5: Hobart

Your self drive tour ends when you return the hire car.

(B = breakfast, L = lunch)

From **\$950*** per person twin share

5 DAYS | HOBART TO HOBART

TRAVEL TYPE: Self drive

DEPARTS: Daily

HIGHLIGHTS

- In Richmond, visit the old gaol and convict-built bridge
- Explore the Port Arthur Historic Site
- Discover spectacular Freycinet National Park

INCLUDES

- 4 nights accommodation
- Meals as specified
- Wineglass Bay Cruise in the Vista Lounge with Tasmanian style Ploughman's lunch
- 5 days Group C car rental with Budget+

+ Based on pick up from airport depot.



Hells Gate, Gordon River



WILD TASMANIA 6 DAYS

Day 1: Launceston

Collect your hire car and explore Launceston. Only 10 minutes from the city centre is the magnificent Cataract Gorge. Overnight at Best Western Plus Launceston.

Day 2: Launceston to Cradle Mountain – 142km

Drive to Deloraine and visit the many galleries and studios. Travel through scenic countryside to Cradle Mountain-Lake St Clair National Park. Stay the next two nights at Discovery Parks – Cradle Mountain.

Day 3: Cradle Mountain

Today explore Cradle Mountain. Visit Devils @ Cradle and get up close with Tasmanian devils. Stay for the After Dark Feeding tour.

Day 4: Cradle Mountain to Strahan – 138km

Explore more of Cradle Mountain. Take a walk to spectacular Montezuma Falls at Rosebery and visit the mining museum at Zeehan. Continue to harbourside Strahan. Overnight at Strahan Village.

Day 5: Strahan to Hobart – 298km

Take a morning Gordon River cruise and take in the breathtaking scenery and calm of our pristine World Heritage-listed wilderness. Continue south and on to Hobart. Overnight at Travelodge Hotel Hobart.

Day 6: Hobart

Check-out of your hotel and return your hire car.

From **\$937*** per person twin share

6 DAYS | LAUNCESTON TO HOBART

TRAVEL TYPE: Self drive

DEPARTS: Daily

HIGHLIGHTS

- See the spectacular Cataract Gorge
- Visit the arty town of Deloraine and pick up some local handicrafts
- Walk around Dove Lake at Cradle Mountain-Lake St Clair National Park
- Hike to the top of Montezuma Falls for beautiful photo opportunities
- Explore the harbourside town of Strahan

INCLUDES

- 5 nights accommodation
- After Dark Feeding at Devils @ Cradle
- Morning Gordon River Cruise with Main Deck Window Seating
- 6 days Group C car rental with Budget+

+ Based on pick up from airport depot.

* FROM PRICES ARE A GUIDE ONLY, subject to change and availability and are in Australian Dollars. Prices are per person twin share, unless otherwise specified and based on the lowest room category and travel in low season. For full terms and conditions, refer to the Booking Conditions on the inside back cover of this brochure.



Wineglass Bay, Freycinet National Park

COASTAL EXPLORER 6 DAYS

Day 1: Hobart

Collect your vehicle on arrival in Hobart. The rest of the day is free to explore the city. Overnight at Travelodge Hobart.

Day 2: Hobart to Richmond – 26km

Travel across the Derwent River this morning and head to Richmond. Wander streets lined with sandstone buildings that house some of the island's best art and crafts. Overnight at Hatchers Richmond Manor.

Day 3: Richmond to Freycinet National Park – 175km

Travel to the east coast today via Orford. Continue on to Triabunna, before arriving at Swansea. Don't miss a stop at the famous Kate's Berry Farm or visit some of the local wineries.

Visit the Bark Mill Tavern, Bakery and Museum before continuing on to Coles Bay and Freycinet National Park. Spend the next two nights at Freycinet Lodge, Coles Bay.

Day 4: Freycinet National Park (B)

Time at leisure today to explore all that Freycinet National Park has to offer, such as Wineglass Bay.

This national park is a hiker's paradise and has numerous walks to cater to all levels of fitness. By far, the most popular walk is to the Wineglass Bay Lookout to see the spectacular beach below. Hazards Beach and Cape Tourville Lookout are also popular places to visit.

Day 5: Freycinet National Park to Launceston – 263km (B)

Travel north through Coles Bay and Bicheno then continue to St Helens, perhaps with a detour to beautiful Binalong Bay. Drive to Scottsdale then on to Launceston.

If time permits, visit City Park or the Queen Victoria Museum and Gallery. In the evening, hit the town and enjoy one of the many fine restaurants the city has to offer. Overnight at Best Western Plus, Launceston.

Day 6: Launceston

This morning enjoy a Cataract Gorge Cruise, then consider heading to Cataract Gorge Reserve to wander the trails and gardens. Your self drive adventure finishes when you return your hire car.

(B = breakfast)

From **\$971*** per person twin share

6 DAYS | HOBART TO LAUNCESTON

TRAVEL TYPE: Self drive

DEPARTS: Daily

HIGHLIGHTS

- Spend the morning strolling around historic Richmond
- Fill up on berries at Kate's Berry Farm
- Hike the Wineglass Bay summit for magnificent views

INCLUDES

- 5 nights accommodation
- Meals as specified
- Cataract Gorge Cruise
- 6 days Group C car rental with Budget+

*Based on pick up from airport depot.



Dove Lake, Cradle Mountain-Lake St Clair National Park

GRAND CIRCLE 10 DAYS

Day 1: Hobart

Collect your vehicle on arrival in Hobart. The rest of the day is at leisure to discover the city. Overnight at Travelodge Hobart.

Day 2: Hobart to Strahan – 300km

Travel across the heart of Tasmania through the Franklin-Gordon Wild Rivers National Park. Stop in at Queenstown then continue on to Strahan. Overnight at Strahan Village.

Day 3: Strahan to Cradle Mountain National Park – 138km

This morning take an optional cruise along the Gordon River (extra charge) before travelling north to Zeehan. Drive to Cradle Mountain-Lake St Clair National Park, renowned for its walking tracks with spectacular mountain peaks and lakes. Spend the next two nights at Discovery Parks – Cradle Mountain.

Day 4: Cradle Mountain National Park (B)

Time at leisure today to explore Cradle Mountain-Lake St Clair National Park.

Day 5: Cradle Mountain National Park to Launceston – 142km (B)

Depart Cradle Mountain and travel east to Mole Creek. Continue on to Launceston and visit Cataract Gorge. Overnight at Best Western Plus, Launceston.

Day 6: Launceston to St Helens – 160km

Depart Launceston and travel to Scottsdale. Near Pyengana take a walk to St Columba Falls. Continue east to St Helens. Visit The Gardens and the Bay of Fires Coastal Reserves near Binalong Bay. Overnight at Georges Bay Apartments, St Helens.

Day 7: St Helens to Swansea – 119km

Travel to Bicheno before continuing south to Swansea. Stay the next two nights at Swansea Cottages & Lodge Suites.

Day 8: Swansea to Freycinet National Park – 60km

Time at leisure today to explore Freycinet National Park.

Day 9: Swansea to Hobart – 134km

Depart for Hobart and perhaps make a stop at one of the local wineries or berry farms near Swansea. Cross the Derwent River on the Tasman Highway to reach Hobart. If time permits, travel back to Hobart via the historic village of Richmond. Overnight at Travelodge Hobart.

Day 10: Hobart

The car should be returned today by the same time as it was collected on day one to avoid any charges.

(B = breakfast)

From **\$1323*** per person twin share

10 DAYS | HOBART TO HOBART

TRAVEL TYPE: Self drive

DEPARTS: Daily

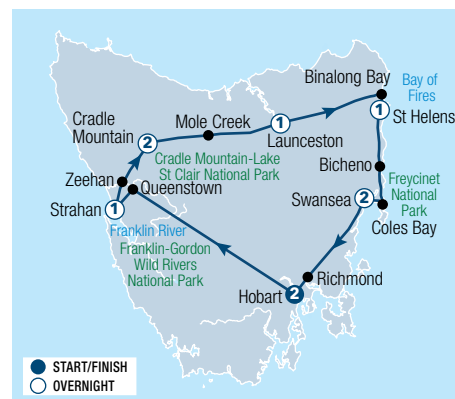
HIGHLIGHTS

- Enjoy one of many hikes through Freycinet National Park
- Learn about local convict history on a Gordon River cruise (extra charge)
- Climb Marion's Lookout in the Cradle Mountain-Lake St Clair National Park

INCLUDES

- 9 nights accommodation
- Meals as specified
- 10 days Group C car rental with Budget+

*Based on pick up from airport depot.



ACCOMMODATION PASSES



Mt Wellington



Nightelier Devonport



TASVILLAS GROUP LOCATIONS

TASVILLAS GROUP

TasVillas Group is Tasmania's largest state-wide accommodation group, offering a wide variety of accommodation options in convenient locations around Tasmania. Operating for almost 40 years, TasVillas Group is a locally owned and operated company, providing guests with quality accommodation, expert service and unforgettable experiences; all at affordable packaged rates.

Tasmania is the ideal touring destination and TasVillas Group specialise in touring packages, with various options available including self-contained apartments, hotels and motel-style accommodation. Accommodation passes are available for three or more nights with generally no minimum night's stay at any one property or location and greater discounts are available for longer stays.

You can mix and match between all styles and standards of accommodation to create a personalised package to suit your individual requirements.

TasVillas Group is the ideal choice for travellers looking for a reliable and consistent standard of accommodation with a trusted brand.



Stay 7 nights and receive a free TasVillas Group carry on suitcase per booking. Valid for travel 1 Apr – 23 Dec 26.

Stay 12 nights and receive a free Tasmanian National Parks Holiday Pass and a free TasVillas Group carry-on suitcase per booking. Valid for travel 1 Apr – 23 Dec 26.

MOTELS & APARTMENTS



Nightcap at Riverside Motel



Bay Hotel Apartments

Various locations

From **\$142**^{*^}

TasVillas Group Motel & Apartments provide motel-style and self-contained multi-bedroom accommodation in convenient city and regional locations around Tasmania. Choose from motel rooms offering tea and coffee-making facilities, or the self-contained options in studio to multi-bedroom apartments, allowing you to self-cater.

All properties feature free off-street parking, guest laundry facilities and may additionally feature barbecue facilities, on-site dining, swimming pool and gym. Ideal for the budget conscious traveller, couples and singles.

Locations:

- Hobart & Southern Tasmania: Waterfront Lodge, Bay Hotel & Apartments, Port Arthur Motor Inn, Nightcap at Carlyle Hotel
- Launceston: Adina Place Motel & Apartments, Nightcap at Riverside Hotel
- North Western Tasmania: Nightcap at Burnie Townhouse, Silver Ridge Retreat

Max Capacity: Varies between properties.

^ Minimum 3 night stay applies.

SELECT HOTELS & APARTMENTS



Georges Bay Apartments



Mantra Hobart Airport

Various locations

From **\$175**^{*^}

TasVillas Group Select Hotels & Apartments offer high quality hotel and self-contained accommodation. The hotel rooms offer an ensuite bathroom with tea and coffee making facilities and the apartments are well equipped with self-catering facilities.

All properties offer guest laundry facilities and free Wi-Fi, with many including free off-street parking, and may additionally include on-site dining, barbecue area, gymnasium, guest lounge and conference facilities. For superb comfort and service, the TasVillas Group Select Hotels & Apartments properties provide quality accommodation that makes for a truly unforgettable experience.

Locations:

- Hobart & Southern Tasmania: Hatchers Manor, Travelodge Hobart, Mantra Hobart Airport, St Ives Apartments
- East Coast: Queechee Motel, Georges Bay Apartments
- Launceston: Mercure Launceston
- North Western Tasmania: Nightcap at Burnie Townhouse, Nightelier Devonport
- West Coast Tasmania: Marsden Court Apartments

Max Capacity: Varies between properties.

^ Minimum 3 night stay applies.

*** FROM PRICES ARE A GUIDE ONLY**, subject to change and availability and are in Australian Dollars. Prices are per room per night for 2 people, unless otherwise specified and based on the lowest room category for travel in low season. For full terms and conditions, refer to the Booking Conditions on the inside back cover of this brochure.



Maria Island National Park

MARIA ISLAND WALK 4 DAYS

Day 1: Hobart to Maria Island (LD) Depart from Hobart and journey to the historic coastal town of Triabunna, where you will take a boat crossing via the sparkling waters of Mercury Passage to the isthmus of Maria Island. Here, enjoy lunch overlooking the crystal-clear waters of Shoal Bay before walking to the tranquil Casuarina Beach camp. In the afternoon explore the trail through the tall eucalypt forest, down to Haunted Bay. In the evening, after a gourmet dinner, stroll along the beach at sunset with a glass of wine. Simple pleasures, surrounded by island beauty. Walking distance: 8km.

Day 2: Maria Island (BLD) Wake up to the chattering of wattle birds, watching first light stream in through the forest. After breakfast, start your journey along five incredible beaches. Watch dolphins play in the surf and sea eagles soaring overhead as you walk past the carpet of exotic shells lining the water's edge.

By late afternoon, arrive at White Gums camp for a refreshing swim. After the perfect day, relax with your fellow walkers, before enjoying a candlelit dinner surrounded by nature. Walking distance: 13km.

Day 3: Maria Island (BLD) Today, head inland to the heart of Maria Island to discover the grand forests, wandering through the world's largest stand of giant Tasmanian Blue Gums. You can choose to climb the peaks of Mt Maria (711 metres) or Bishop and Clerk (a 599 metre climb through rare "cloud" rain forests) with views that are simply breathtaking. By the afternoon, head into the historic settlement of Darlington where you'll stay at heritage-listed Bernacchi House for a final feast with friends. Walking distance: 9-17km.

Day 4: Maria Island to Hobart (BL) The final morning starts with a walk around the northern tip of Maria Island, via a variety of spectacular woodlands and forests with rare endemic birds, wallabies and wombats. Later we continue on to the dramatic Fossil Cliffs.

Heading back to Darlington, there is a last celebratory lunch before boarding the boat back to mainland Tasmania, with time to reflect on the past days getting to know Maria. Hopefully, amongst new friends and incredible memories that will last a lifetime. Walking distance: 4km.

(B = breakfast, L = lunch, D = dinner)

From **\$3110*** per person twin share



4 DAYS | HOBART TO HOBART

OPERATOR: The Maria Island Walk

TRAVEL TYPE: Guided walk

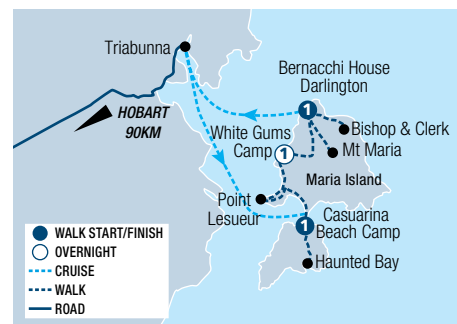
DEPARTS: Daily (Oct – Apr)

HIGHLIGHTS

- See rare wildlife and breathtaking scenery
- Cruise through the sparkling waters of Mercury Passage
- Enjoy candlelit gourmet dinners under the stars

INCLUDES

- 2 nights wilderness camp accommodation
- 1 night lodge accommodation
- Meals as specified
- Expert guides
- Selected alcoholic and non-alcoholic beverages
- Use of a 50 litre pack, waterproof jacket, sleeping bag liner, pillowcase and head torch
- National park fees
- Return transfers from Hobart accommodation



Dove Lake, Cradle Mountain-Lake St Clair National Park

ULTIMATE TASMANIA 10 DAYS

Day 1: Hobart to Queenstown (D) Depart Hobart and travel west to Mt Field National Park. Stop at Lake St Clair, the deepest freshwater lake in Australia. Take in the scenery as you pass through the Franklin-Gordon National Park. Overnight in Queenstown.

Day 2: Gordon River Cruise (BLD) Today travel to Strahan, where you will embark on your cruise of the Gordon River. This fantastic river cruise includes a guided boardwalk through the UNESCO World Heritage rainforest as well as a guided tour of the harshest penal settlement in Australia at Sarah Island. In the afternoon, take a scenic drive to the town of Tullah. Overnight in Tullah.

Day 3: Tullah to Smithton (BD) Travel to the North West Coast of Tasmania. At Stanley, take in the views of The Nut. Journey to Arthur River on the wild Tarkine Coast. Overnight at Smithton.

Day 4: Smithton to Devonport (BD) Spend today exploring the Tarkine, the second largest cool temperate rainforest in the world. Continue your journey along the North West Coast to Devonport. Overnight in Devonport.

Day 5: Devonport to Launceston via Cradle Mountain (B) This morning visit Cradle Mountain-Lake St Clair National Park. Look for wombats at Ronny Creek, venture down to the iconic boatshed and walk around glacial-carved Dove Lake. Spend time in Sheffield, before arriving in Launceston. Overnight in Launceston.

Day 6: Launceston to Bicheno (BD) Visit Cataract Gorge before driving down the scenic East Coast. At the Bay of Fires, explore the white sands and lichen-clad boulders. Continue onto the town of Bicheno. Overnight in Bicheno.

Day 7: Bicheno to Hobart via Freycinet National Park Spend the day exploring Freycinet National Park. Walk to Wineglass Bay Lookout for views of Tasmania's most famous beach with its curved white shores and turquoise-coloured waters. Return to Hobart via the Great Eastern Drive. Stay the next three nights in Hobart.

Day 8: Richmond & Wellington Park (B) Meet a variety of Tasmanian wildlife at Bonorong Wildlife Sanctuary. Visit the colonial village of Richmond before heading back to Hobart. This afternoon, venture up Mount Wellington.

Day 9: Bruny Island (B) After breakfast, embark on an adventure to Bruny Island. Climb the 279 steps to the top of Truganini Lookout before visiting South Bruny National Park.

Day 10: Port Arthur Historic Site & Tasman Peninsula (B) This morning, visit the Port Arthur Historic Site and wander around the preserved ruins. Continue on to the Tasman Peninsula and take in the rugged coastal scenery. Return to Hobart where your tour concludes.

(B = breakfast, L = lunch, D = dinner)

From **\$3275*** per person twin share



10 DAYS | HOBART TO HOBART

OPERATOR: Under Down Under Tours

TRAVEL TYPE: Escorted

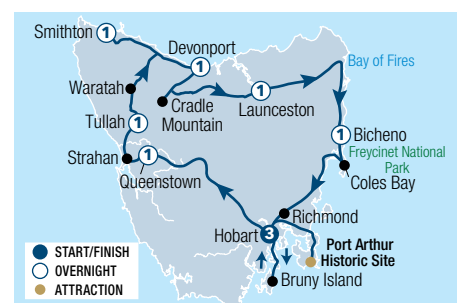
DEPARTS: Selected Mondays (Sep – Apr)

HIGHLIGHTS

- Cruise the Gordon River
- See beautiful Dove Lake at Cradle Mountain-Lake St Clair National Park
- Visit Tasmania's East Coast and the beautiful Bay of Fires
- Enjoy local food tasting on Bruny Island

INCLUDES

- 9 nights motel accommodation
- Meals as specified • Gordon River Cruise
- Admission to Bonorong Wildlife Sanctuary, Port Arthur Historic Site and harbour cruise
- Return Bruny Island ferry transfers
- Experienced guide • National park fees
- Transport by air-conditioned vehicle
- Return transfers from Hobart



CRUISING



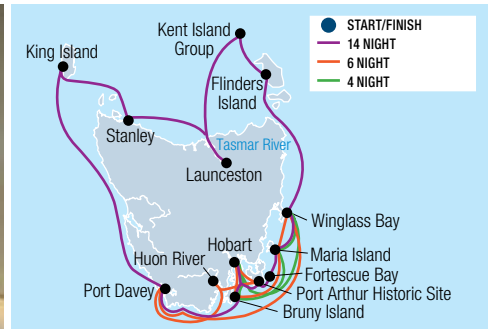
Bramble Cove, Port Davey



Cape Hauy



Main Deck Stateroom



CORAL EXPEDITIONS

Tasmania beckons from the edge of the world, where three oceans collide in a symphony of towering sea cliffs and crescent-shaped beaches. This island state captivates with its ancient wilderness: 1.6 million hectares of World Heritage Area housing the planet's oldest Huon pines and archaeological sites spanning 65,000 years of Aboriginal heritage.

CORAL DISCOVERER FEATURES:

- Full internal renovation in 2025
- Open Bridge
- Single seating dining
- Wrap-around promenade deck with panoramic views
- Shallow draft to access remote destinations
- Maximum of 72 guests

CABIN FEATURES:

- Cabin with private en suite and junior or king beds
- Air-conditioning
- Daily servicing

INCLUDES:

- Onboard accommodation
- All meals, chef-prepared on board
- Selected wines, selected beers and house spirits, juices, and soft drinks served with lunch and dinner
- 24-hour barista-style coffee and tea station
- All excursions with the Expedition Team (14 day cruise)
- Selected excursions with the Expedition Team (4 & 6 day cruises)
- Use of Xplorer and Zodiacs
- Captains welcome and farewell events
- All entrance fees to National Parks, ports, traditional owner fees and charges imposed by governing authorities
- Tips and gratuities
- Standard Wi-Fi access

4 NIGHT COASTAL ADVENTURES+ TASMANIA

Discover rugged coastlines on a flexible escape of hikes, kayaking, and beach picnics. Evenings bring Tasmanian wines, shared plates, and golden sunsets.

Highlights:

- Bruny Island
- Maria Island
- Freycinet National Park

From Hobart:

2027: Jan 2, 6, 10

	2027
Main Deck Category B	\$4950* [^]
Main Deck Category A	\$5450* [^]

6 NIGHT COASTAL ADVENTURES+ TASMANIA

Tasmania's untouched coastline reveals Port Davey's dramatic fjords, Freycinet's pristine beaches, Maria Island's history, and Australia's most remote wilderness.

Highlights:

- Bruny Island
- Maria Island
- Freycinet National Park
- Port Davey

From Hobart:

2027: Jan 14

	2027
Main Deck Category B	\$7280* [^]
Main Deck Category A	\$7980* [^]

14 NIGHT CIRCUMNAVIGATION OF TASMANIA

Circle Tasmania's wilderness coast, showcasing its national parks, remote islands and rugged coastline. Witness 300m sea cliffs, sail past historic lighthouses, discover convict ruins, kayak World Heritage waters, meet wombats, and dine at award-winning vineyards.

Highlights:

- Maria Island • Freycinet Peninsula • Flinders Island • Kent Island Group • Tamar River & Launceston
- Stanley Island • King Island • West Coast Cruising • Port Davey • Bruny Island • Tasman Peninsula • Port Arthur

From Hobart:

2027: Feb, 6, 20, Mar 6

	2027
Main Deck Category B	\$13,060* [^]
Main Deck Category A	\$14,250* [^]

[^]Children 12 to 18 yrs – adult prices apply. Children under 12 yrs price on application. A fuel levy may apply. There may be changes made to daily schedule where necessary to maximise guest experience given the weather, local environment and safety considerations. Other cabin categories also available. +The 4 & 6 night cruises are part of the Coastal Adventures series which have slightly different inclusions and format.

* FROM PRICES ARE A GUIDE ONLY, subject to change and availability and are in Australian Dollars. Prices are per person twin share, unless otherwise specified and based on the lowest room category. For full terms and conditions, refer to the Booking Conditions on the inside back cover of this brochure.



Hobart



HOBART

Hobart is a small city that's big on charm and its compact size makes it ideal for exploring by foot. From the weekly Salamanca Markets and the lively Constitution Dock to the annual Festival of Voices and other iconic events, it's little wonder Hobart remains such a popular destination. Venture out from Hobart to Port Arthur, Richmond, Bruny Island and the Huon Valley for memorable and easy day trips.

SEE

- Watch a spectacular sunrise from the Hobart waterfront
- Explore the interesting, and sometimes controversial, exhibits at Mona

DO

- Explore Port Arthur Historic Site and learn about Australia's compelling convict history
- Walk from Salamanca to Battery Point via Kelly's Steps
- Indulge in artisan cheese, chocolate and craft beer on Bruny Island
- Drive up Mt Wellington for incredible views of Hobart

EAT & DRINK

- Try a signature scallop pie from the Salamanca Markets

WHAT'S ON

Festival of Voices

3 to 12 July

Dark Mofu

11 to 22 June

Solstice Swim

21 June

Targa Tasmania

15 to 20 November

REF.	APARTMENTS	PAGE	REF.	HOTELS	PAGE
1	Discovery Parks - Hobart, Risdon	47	7	Lenna of Hobart	48
2	The Old Woolstore Apartment Hotel	48	8	MACq 01	49
3	Salamanca Terraces	47	9	The Tasman, a Luxury Collection Hotel, Hobart	49
4	Crowne Plaza Hobart	48	10	Travelodge Hobart	47
5	The Henry Jones Art Hotel	49	11	Vibe Hotel Hobart	47
6	Hotel Grand Chancellor Hobart	48	12	Wrest Point, Sandy Bay	49

HOBART TOURS



BATTERY POINT HISTORIC TOUR

Wander through the charming streets of Battery Point, one of Hobart's oldest and most picturesque suburbs. Soak in the serene village atmosphere as you stroll past quaint cottages, historic sandstone buildings. With a small group, you will enjoy a more personal connection to the hidden corners and spirited characters of Hobart's past.

Includes:

- Knowledgeable local guide

Operator: Hobart Historic Tours

Duration: 1 hour 30 minutes

Departs: From Salamanca Place at 3:30pm
Mon to Sat (Apr – May, Sep – Mar),
Wed to Sat (Jun – Aug)

Hobart Historic Walk, Grand Hobart Walk, Old Hobart Pub Tour and private tours also available.

	Adult	Child 8-17 yrs
Walking Tour	\$43* [^]	\$34* [^]

[^]Minimum two people required for tour to operate.



HOBART WINE TOUR

Join a relaxing and flavour-filled tour visiting the Coal Valley wine region and some of southern Tasmania's most celebrated vineyards. Enjoy hand-picked cellar doors, local produce, and stunning scenery on this wine adventure from Hobart. You'll visit and enjoy wine tastings at four premium cellar doors.

Includes:

- Wine tastings at selected vineyards
- 2-course seasonal lunch with a glass of wine (full day)
- Cheese platter (half day)
- Return transfers from Hobart

Operator: Apple Isle Wine Tours

Duration: Half day tour: 4 hours,
Full day tour: 7 hours

Departs: Daily from Hobart at 9:45am

Not suitable for children under 18 yrs.

	Adult
Half Day Wine Experience	\$179*
Full Day Wine Experience	\$290*



MT. FIELD, MT. WELLINGTON & WILDLIFE

Soak up Tasmania's pure and wild nature in a day of rainforest walks, picturesque waterfalls, wildlife and misty mountaintops. Visit Mt. Field National Park and embark on the Three Falls Circuit which takes you to the iconic Russell Falls, the peaceful Horseshoe Falls and the Lady Barron Falls. Visit Bonorong Wildlife Sanctuary before heading to the summit of kunyoni/Mt. Wellington.

Includes:

- Admission to Bonorong Wildlife Sanctuary
- Guided walks and commentary
- National park fees
- Return transfers from selected Hobart accommodation

Operator: Tours Tasmania

Duration: 10 hours

Departs: Mon, Tue, Thu, Fri from Hobart at 7:30am

Not suitable for children under 8 yrs.

	Adult	Child 8-15 yrs
Sightseeing Tour	\$185*	\$175*



SOUTHWEST WILDERNESS EXPERIENCE

Enjoy a bird's-eye view as you fly over Southwest National Park to explore remote wilderness and waterways. Embark on a boat cruise along the Melaleuca Inlet as well as a walking tour along the Needwonnee Walk. Visit the Melaleuca Museum and take a scenic boat ride, enjoy lunch paired with Tasmanian wines.

Includes:

- Return scenic flight to Melaleuca
- Refreshments
- Boat cruise into Bathurst Harbour
- Tour of Melaleuca
- Lunch with wine
- Experienced guide

Operator: Par Avion Wilderness Tours

Duration: 8 hours

Departs: Daily from Cambridge Aerodrome, Hobart at 8:30am

	Adult	Child 2-15 yrs
Scenic Flight	\$799* [^]	\$749* [^]

[^]A National Park Pass is required to enter Southwest National Park. Refer to page 35 for details.



IRON POT CRUISE

Discover Hobart's coastal beauty and maritime history on a two and a half hour eco cruise exploring its waterways, beaches, cliffs and caves. Journey up to the Iron Pot, Australia's oldest lighthouse and hear the tales of early shipwrecks. Voyage further south into Storm Bay to circumnavigate Betsey Island, which is home to a variety of seabirds including the majestic white bellied sea eagle.

Includes:

- 2 hour 30 minute eco cruise
- Qualified crew
- Informative commentary

Operator: Pennicott Wilderness Journeys

Duration: 2 hours 30 minutes

Departs: Daily from Franklin Wharf, Hobart at 2pm

	Adult	Child 3-16 yrs
Scenic Cruise	\$150*	\$130*



TASMANIAN SEAFOOD SEDUCTION CRUISE

Spend the day cruising on pristine waterways gathering fresh Tasmanian seafood. Sit back and relax as your guide snorkels for wild abalone and sea urchin. Enjoy succulent, salty oysters straight from the shell and feast on seafood including rock lobster, abalone, sea urchin and tuna.

Includes:

- D'Entrecasteaux Channel cruise
- Degustation seafood lunch
- Tasmanian wine, beer, cider and organic juice
- Qualified crew
- Informative commentary

Operator: Pennicott Wilderness Journeys

Duration: 7 hours 30 minutes

Departs: Sun to Fri from Franklin Wharf, Hobart at 9:30am, Sat at 10am

Not suitable for children under 3 yrs.

	Adult/Child
Scenic Cruise	\$700*



BRUNY ISLAND TRAVELLER

Taste your way across Bruny Island by visiting some of the local artisan producers. Take in the island's spectacular scenery on this full day adventure. Enjoy award-winning cheeses, premium wines and beer, freshly shucked oysters, handmade fudge, local honey, ice cream, mead and a beachside lunch. Visit the Neck Lookout and Mavista Rainforest.

Includes:

- All tastings
- Guided tour of Bruny Island
- Morning tea and lunch
- Maximum 24 passengers
- Return transfers from Hobart CBD accommodation

Operator: Pennicott Wilderness Journeys

Duration: 10 hours

Departs: Daily from Hobart at 7:45am

	Adult	Child 3-17 yrs
Sightseeing Tour	\$290*	\$250*



ONE DAY BRUNY ISLAND

Embark on a full day Bruny Island adventure from Hobart. Enjoy a guided bus tour, scenic ferry crossing, morning tea, and award-winning wilderness cruise before a delicious lunch. Cruise beneath towering sea cliffs, explore deep caves and look for seals, dolphins and seabirds along Bruny's spectacular rugged coastline.

Includes:

- Bruny Island Wilderness Cruise
- Morning tea and lunch
- Experienced driver/guide
- Informative commentary
- Return transfers and ferry crossing from Hobart to Bruny Island

Operator: Bruny Island Cruises

Duration: 9 hours 30 minutes

Departs: Daily from Franklin Wharf, Hobart at 7:30am

	Adult	Child 3-16 yrs
Sightseeing Tour	\$275*	\$205*



BRUNY ISLAND FOOD, SIGHTSEEING & LIGHTHOUSE

Explore the best of Bruny Island on this fully inclusive guided day tour. Taste the island's best local produce, including honey, chocolate and fudge tastings with oysters and cheese by the beach for morning tea. Enjoy lunch at the local hotel, followed by an exclusive guided tour of Cape Bruny Lighthouse. Search for a white wallaby and climb the stairs to the Truganini Lookout.

Includes:

- Exclusive Cape Bruny Lighthouse tour
- Lunch and morning tea • All tastings
- National Park fees • Local guide
- Return transfers from selected Hobart locations

Operator: Bruny Island Safaris

Duration: 10 hours

Departs: Daily from Hobart at 7am

	Adult/Child
Sightseeing Tour	\$280*



TAHUNE AIRWALK & HASTINGS CAVES

Head into the treetops and then below ground for some amazing scenic contrasts. The Tahune AirWalk Cantilever stretches more than 600 metres through the treetops with spectacular panoramic views. Enjoy other short walks around the site before continuing south to Hastings Caves. Take a dip in the thermal pool and then join a walk deep underground into the amazing cave network with its ancient formations.

Includes:

- Admission to Tahune Forest AirWalk
- Hastings Caves guided tour • National park fees
- Return transfers from selected Hobart accommodation

Operator: Tours Tasmania

Duration: 10 hours

Departs: Mon, Thu from Hobart at 7:30am

Not suitable for children under 8 yrs.

	Adult	Child 8-15 yrs
Sightseeing Tour	\$205*	\$195*



TASMAN ISLAND TOUR & CRUISE

Travel along the spectacular coastline of the Tasman Peninsula National Park. See Australia's highest sea cliffs, waterfalls, archways and blowholes. Enter deep sea caves and search for abundant wildlife including seals, migrating whales, dolphins and seabirds.

Includes:

- Wilderness cruise
- Morning tea • Lunch
- Return bus tour from Hobart to Tasman Peninsula

Operator: Tasman Island Cruises

Duration: 10 hours

Departs: Daily from Franklin Wharf, Hobart at 7:15am

Other Tour Options:

Tour with Tasmanian Devil Park **\$345*** per adult, **\$250*** per child 3-16 yrs.

Tour with Port Arthur Historic Site **\$345*** per adult, **\$235*** per child 3-16 yrs.

	Adult	Child 3-16 yrs
Sightseeing Tour	\$290*	\$215*

HOBART TOURS



CAPE RAOUL CRUISE

Experience a wilderness cruise from Port Arthur to Cape Raoul, exploring Tasman Peninsula's soaring sea cliffs, caves, arches, and white beaches. Discover Tasman National Park's dramatic dolerite columns and rich history near the UNESCO-listed Port Arthur Historic Site, guided by locals eager to showcase this breathtaking coastal wonderland.

Includes:

- Cape Raoul wilderness cruise
- Self guided admission to Port Arthur Historic Site
- Experienced guide
- Return transfers from Hobart

Operator: Pennicott Wilderness Journeys

Duration: 10 hours

Departs: Daily from Hobart at 7:45am

	Adult	Child 3-16 yrs
Scenic Cruise	\$260*	\$210*



PORT ARTHUR, RICHMOND & TASSIE DEVILS

Enjoy a fun, action-packed day on the stunning Tasman Peninsula. Take a walk exploring Tasman Arch, Devils Kitchen and Waterfall Bay. Travel to Tasmania Devil Unzoo™ and watch devils feeding. Spend the afternoon exploring the Port Arthur Historic Site with its captivating and gruesome history. Return to Hobart via picturesque Richmond village.

Includes:

- Admission to Tasmania Devil Unzoo™
- Admission to Port Arthur Historic Site
- Port Arthur Harbour cruise • National Park fees
- Return transfers from selected Hobart accommodation

Operator: Tours Tasmania

Duration: 10 hours 30 minutes

Departs: Mon to Fri from Hobart at 7:30am

Not suitable for children under 8 yrs.

	Adult	Child 8-15 yrs
Sightseeing Tour	\$195*	\$185*



PORT ARTHUR, RICHMOND & TASMAN PENINSULA

Journey to the Tasman Peninsula and learn about the history of this area. Wonder at the amazing coastal views from pristine Pirates Bay Lookout and take a guided walk to discover Waterfall Bay, Tasman Arch and Devil's Kitchen. Spend the afternoon exploring the Port Arthur Historic Site. Return to Hobart via the historic township of Richmond and walk across Australia's oldest convict built, sand-stone bridge.

Includes:

- Admission to Port Arthur Historic Site
- Port Arthur Harbour cruise • National Park fees
- Return transfers from selected Hobart accommodation

Operator: Tours Tasmania

Duration: 10 hours 30 minutes

Departs: Mon to Fri from Hobart at 7:30am

Not suitable for children under 8 yrs.

	Adult	Child 8-15 yrs
Sightseeing Tour	\$170*	\$160*



PORT ARTHUR TOUR

Travel across the Tasman Bridge, through Eaglehawk Neck, onto the Tasman Peninsula. Wonder at the amazing coastal views from pristine Pirates Bay Lookout. Take a self-guided walking tour of Port Arthur with access to over 30 ruins and restored buildings.

Includes:

- Admission to Port Arthur Historic Site
- Harbour cruise around the Isle of the Dead
- Remarkable Cave Tour (optional)
- Chocolate Foundry visit
- Expert driver/guide
- Informative commentary
- Return transfers from Hobart accommodation

Operator: Gray Line Tasmania

Duration: 8 hours 30 minutes

Departs: Sun to Fri from Brooke Street Pier, Hobart at 8:45am

	Adult	Child 4-14 yrs
Sightseeing Tour	\$180*	\$90*



MARIA ISLAND ACTIVE DAY TOUR

Travel from Hobart to the East Coast and then enjoy a short ferry ride to Maria Island where the only permanent inhabitants are the abundant wildlife. This is a day for active travellers who are keen to walk and enjoy nature in all of its glory. Maria Island has a diverse range of highlights including convict history, coastal cliffs and deserted beaches.

Includes:

- Return ferry from Triabunna to Maria Island
- Guided walks and commentary
- National park fees
- Return transfers from selected Hobart accommodation

Operator: Tours Tasmania

Duration: 10 hours 15 minutes

Departs: Mon, Tue, Thu, Fri from Hobart at 6:45am (Oct – Apr)

Not suitable for children under 8 yrs.

	Adult	Child 8-15 yrs
Sightseeing Tour	\$215*	\$205*



WINEGLASS BAY & FREYCINET

Drive from Hobart along the scenic East Coast to Freycinet National Park. Walk to the Wineglass Bay Lookout for world-famous views and stunning photo opportunities. Returning from the lookout, enjoy a lunch break at Honeymoon Bay. Walk the Cape Tourville Lighthouse circuit and visit Sleepy Bay. Before returning to Hobart, stop at Devil's Corner winery. Perched high on a hill overlooking Freycinet, it's the ideal place to kick back with a glass of wine or a gelato at the end of a glorious day.

Includes:

- Wineglass Bay Lookout • Guided walks
- Experienced guide • National park fees
- Return transfers from selected Hobart accommodation

Operator: Tours Tasmania

Duration: 10 hours 30 minutes

Departs: Mon to Fri from Hobart at 7:30am

Not suitable for children under 8 yrs.

	Adult	Child 8-15 yrs
Sightseeing Tour	\$165*	\$155*

DISCOVERY PARKS – HOBART, RISDON



Superior Cottage



Superior Cottage

673 East Derwent Highway, Risdon
MAP PAGE 43

From **\$166***

- ❖ Spacious cabins and cottages with all the comforts of home
- ❖ Just 10 minutes away from Mona – Museum of Old and New Art
- ❖ Family friendly facilities including mini golf

Location: Only a 20 minute drive from Hobart and offers a central location in a relaxed bush setting. Distances: Town centre 2.4km.

Property Features: Barbecue facilities, Kiosk, Mini golf, Bouncing pillow, Children's playground, Guest laundry, Parking (free), 13 rooms.

Room Features: Air-conditioning, Balcony, Fireplace (Deluxe Cabin), Kitchen with dishwasher and microwave, Tea/coffee making facilities, Washing machine and dryer, Ironing facilities, Hair dryer.

Max Capacity: Superior Cottage – 6, Deluxe Cabin – 4.



SALAMANCA TERRACES



Hotel Studio



1 Bedroom

Corner Salamanca Place and Runnymede Street, Hobart*
MAP PAGE 43

From **\$245***

- ❖ Self-contained and fully serviced apartments
- ❖ Laundry facilities, dining and bar services available at Lenna of Hobart
- ❖ Stroll the nearby cobblestone pathways and browse galleries and art shops

Location: On Salamanca Place, adjacent to Hobart's picturesque waterfront and historic Battery Point. Distances: Brooke Street Pier 600m.

Property Features: Lift, 24 hour reception, Non smoking, Parking (free), 25 rooms.

Room Features: Air-conditioning, Limited cooking facilities with microwave (Hotel Studio), Kitchen with microwave (1 and 2 Bedroom), Washer/dryer (1 and 2 Bedroom), Ironing facilities, Hair dryer.

Max Capacity: Hotel Studio – 2, 1 Bedroom/1 Bedroom Penthouse – 3, 2 Bedroom Townhouse – 5.

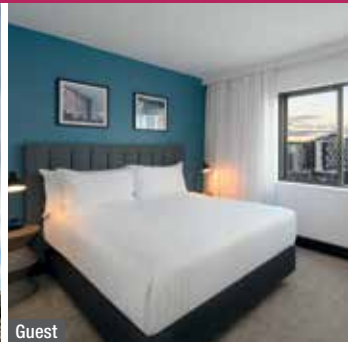
* Reception: Lenna of Hobart, 20 Runnymede Street Hobart.



TRAVELODGE HOBART



167 Macquarie Street, Hobart
MAP PAGE 43



Guest

From **\$170***

- ❖ Rooms have views of Mt Wellington and the city
- ❖ Walk to Salamanca Markets, the waterfront and Hobart Museum
- ❖ Meals from selected restaurants can be charged back to guest rooms

Location: In downtown Hobart and the ideal base for exploring the city by foot. Distances: Brooke Street Pier 650m.

Property Features: Restaurant (breakfast), Room service (mini bar only), Dry cleaning service, Guest laundry, 24 hour reception, Parking (on-site limited and off-site – extra charge), 131 rooms.

Room Features: Air-conditioning, Heating, Kitchenette with microwave, Tea/coffee making facilities, Hair dryer, All rooms non smoking.

Max Capacity: Guest/Executive – 3.



VIBE HOTEL HOBART



36 Argyle Street, Hobart
MAP PAGE 43



Guest

From **\$231***

- ❖ All bedroom furniture made from Tasmanian oak and made from local craftsmen
- ❖ Paddock-to-plate culinary delights served at Belvedere restaurant
- ❖ Gym and heated pool on-site

Location: Situated in the heart of historical Hobart with the Salamanca Markets, bars and galleries close by. Distances: Brooke Street Pier 550m.

Property Features: Pool (heated), Restaurant, Bar, Room service, Gym, Laundry service, Lift, 24 hour reception, 142 rooms.

Room Features: Air-conditioning, Coffee pod machine, Tea/coffee making facilities, Mini bar, Ironing facilities, Hair dryer, Safe.

Max Capacity: Guest/Mountain View – 2.



HOBART ACCOMMODATION

CROWNE PLAZA HOBART



Standard

110 Liverpool Street, Hobart
MAP PAGE 43

From **\$287***

- ❖ Spacious, modern rooms with contemporary design
- ❖ Rooftop Club Lounge with panoramic views
- ❖ A large, outdoor deck overlooking Liverpool Street

Location: The city's renowned Salamanca Place, Constitution Dock and the waterfront are a short walk from the hotel. Distances: Brooke Street Pier 750m.

Property Features: Restaurants (2), Bars (2), 24 hour room service, Fitness centre, Club lounge, Outdoor deck, Laundry/dry cleaning service, Lift, Parking (valet – extra charge), 241 rooms.

Room Features: Air-conditioning, Tea/coffee making facilities, Mini bar, Cable TV, Smart TV with Chromecast, Ironing facilities, Bathrobes, Hair dryer, Safe.

Max Capacity: Standard/Standard Club – 3 adults or 2 adults/2 children.



HOTEL GRAND CHANCELLOR HOBART



City Side King

1 Davey Street, Hobart
MAP PAGE 43

From **\$262***

- ❖ Spacious, contemporary rooms are modern and feature panoramic views
- ❖ Atrium Bar and Tasman Restaurant serve local produce and beverages
- ❖ Minutes' walk away from attractions such as Constitution Dock

Location: On Hobart's waterfront and perfect for exploring the city by foot. Distances: Brooke Street Pier 600m.

Property Features: Pool (heated indoor), Restaurant, Bar, 24 hour room service, Gym, Sauna, 24 hour reception, Parking (on-site – extra charge), 244 rooms.

Room Features: Air-conditioning, Tea/coffee making facilities, 55" Smart TV with Chromecast, In-room movies (pay to view), Ironing facilities, Hair dryer.

Max Capacity: City Side King/Superior City Side King/Harbour View King/Superior Harbour View King – 2, City Side Twin/Superior City Side Twin/Harbour View Twin/Superior Harbour View Twin – 4.



LENA OF HOBART



Mountain View

20 Rynymede Street, Battery Point
MAP PAGE 43

From **\$300***

- ❖ A beautifully restored sandstone mansion, classified by the National Trust
- ❖ Rooms and suites are spacious with modern amenities
- ❖ Enjoy mountain, harbour or park views

Location: The ideal base from which to explore southern Tasmania while Salamanca Place, the waterfront and dining options are within walking distance. Distances: Brooke Street Pier 600m.

Property Features: Chandelier Lounge Bar, Breakfast service, Lift, 24 hour reception, Guest laundry, Parking (free), 52 rooms.

Room Features: Air-conditioning, Coffee pod machine, Mini bar, Ironing facilities, Hair dryer, Safe.

Max Capacity: Mountain View/Park View/Harbour View/Harbour View King Suite – 3, Family Suite – 4.



THE OLD WOOLSTORE APARTMENT HOTEL



Hotel

1 Macquarie Street, Hobart
MAP PAGE 43

From **\$316***

- ❖ A heritage listed façade, classified by the National Trust
- ❖ Rooms are spacious with modern amenities and conveniences
- ❖ Apartments cater to families and groups

Includes full breakfast daily.

Location: Within a stone's throw of the city centre and just a block away from the waterfront. Distances: Brooke Street Pier 700m.

Property Features: Restaurant, Bar, 24 hour room service, Gym, Laundry/dry cleaning service, 24 hour reception, Parking, 242 rooms.

Room Features: Air-conditioning, Kitchen with microwave and dishwasher (except Hotel Room), Tea/coffee making facilities, Mini bar, Cable TV, Laundry (except Hotel Room), Ironing facilities, Hair dryer.

Max Capacity: Hotel/2 Bedroom Loft – 4, Studio/Deluxe Spa – 2, 1 Bedroom – 3, 2 Bedroom – 5.



WREST POINT, SANDY BAY



Motor Inn

410 Sandy Bay Road, Sandy Bay
MAP PAGE 43

From **\$170***

- ❖ Rooms have views of the Derwent River or Mt Wellington
- ❖ Features multiple bars, and live entertainment venues
- ❖ Point Revolving Restaurant, offering 360° views from the 17th floor

Location: Positioned on the Derwent River and a short drive into Hobart CBD.
Distances: Brooke Street Pier 2.8km.

Property Features: Casino, Pool (heated indoor), Spa, Restaurants (5), Bars (4), Room service, Gym, Sauna, Mini golf, Lift, 24 hour reception, Parking (free), 271 rooms.

Room Features: Air-conditioning, Tea/coffee making facilities, Cable TV, In-room movies (free), Ironing facilities, Hair dryer, Safe.

Max Capacity: Motor Inn/Harbour View Deluxe/Mountain View Deluxe/Water Edge – 3, Harbour View Suite – 2.



THE HENRY JONES ART HOTEL



Standard

25 Hunter Street, Hobart
MAP PAGE 43

From **\$380***

- ❖ A first class hotel showcasing the work of the state's finest, visual artists
 - ❖ Most rooms have harbour and water views
 - ❖ A bar is located under the central glass atrium
- Includes full breakfast daily.**

Location: On the waterfront and converted from a row of historic warehouses. Walk to Salamanca Place and the CBD. Distances: Brooke Street Pier 500m.

Property Features: IXL Gallery, Restaurants (2), Bar, Café, Room service, Gym, Guest laundry, 24 hour reception, Valet parking (extra charge), 56 rooms.

Room Features: Air-conditioning, Mini bar, Tea/coffee making facilities, Chromecast, Cable TV, Ironing facilities, Spa bath (except Standard).

Max Capacity: Standard/Standard Harbour View/Deluxe Spa/Deluxe Spa Harbour View/Henry Jones Suite/Oriental Suite – 3, Peacock Terrace Suite – 4.



MACQ 01



Superior Hunter

18 Hunter Street, Hobart
MAP PAGE 43

From **\$420***

- ❖ Some rooms and suites have private terraces with views of the harbour
- ❖ Enjoy a drink in the Story Bar
- ❖ Unique experiences such as story-telling tours available

Includes full breakfast daily.

Location: In the heart of Hobart's waterfront and steps from the CBD, museum, Salamanca Place and an array of dining options. Distances: Brooke Street Pier 500m.

Property Features: Restaurant, Bars (2), Gym, Guest lounge, Laundry/dry cleaning services, 24 hour reception, Valet parking (extra charge), 114 rooms.

Room Features: Water views (Executive Waterfront Suite, Premium Waterfront Suites, Luxury Waterfront Suites, Superior Waterfront Room), Fireplace (Luxury Waterfront Suite, Executive Corner Suite), Air-conditioning, Balcony, Coffee pod machine, Ironing facilities, Bathrobes.

Max Capacity: Superior Hunter/Luxury Waterfront Suite/Superior Corner Suite/Premium Waterfront Suite/Superior Waterfront/Executive Corner Suite/Executive Waterfront Suite – 3.



THE TASMAN, A LUXURY COLLECTION HOTEL, HOBART



Deco King

12 Murray Street, Hobart
MAP PAGE 43

From **\$289***

- ❖ An architecturally stunning and historically rich hotel in the heart of Hobart
- ❖ Well-appointed guest rooms and suites with luxurious amenities
- ❖ Enjoy The Tasman's signature High Tea by the fireplace in the Deco Lounge

Location: Situated between Hobart's CBD, Derwent Harbour and the iconic Salamanca Place and Battery Point. Just a short walk to the Mona Ferry Terminal and Tasmanian Museum and Art Gallery. Distances: Brooke Street Pier 1.1km.

Property Features: Restaurant, Lounge, Bar, 24 hour room service, 24 hour reception, Fitness centre, Laundry/dry cleaning services, Parking (extra charge), Lift, 152 rooms.

Room Features: Air-conditioning, Smart TV with streaming services, USB charging points, Mini fridge, Tea/coffee making facilities, Ironing facilities, Bathrobes, Hair dryer.

Max Capacity: Deco King/Pavilion King/Heritage King/Water View King/Panoramic King/Grand Heritage King – 2, Tasman Double – 4.





Dove Lake, Cradle Mountain-Lake St Clair National Park

Tourism Tasmania/Jason Charles Hill

NORTH WESTERN TASMANIA

This stunning region is home to some of the most spectacular scenery on the planet. Iconic, not to be missed landmarks include Cradle Mountain, Dove Lake, the Gordon River and The Nut. The rich farmland of the north west is as beautiful as it is bountiful and worth the leisurely journey along Bass Strait from Devonport to Stanley.

SEE

- See Huon pines and other local flora on a Gordon River cruise

DO

- Walk or take the chairlift to the summit of The Nut, located in Stanley
- Hike through the Tarkine Wilderness
- Take a scenic helicopter ride deep into Tasmania's west coast wilderness
- Get up close and personal with Tassie devils and quolls at Devils @ Cradle

WHAT'S ON

Devonport Jazz Festival

23 to 26 July

Chocolate Winterfest, Latrobe

4 to 10 August

Bloomin' Tulips Festival, Wynyard

12 September to 10 October



REF.	APARTMENTS	PAGE	REF.	HOTELS	PAGE
1	Discovery Resorts – Cradle Mountain	53	1	Cradle Mountain Hotel	52
2	Horizon Deluxe Apartments, Stanley	52	2	Hanlon Guest House, Stanley	51
3	Tall Timbers, Smithton	53	2	Rose's Villa, Stanley	52
			2	Stanley Seaview Inn	51
			4	Strahan Village	53

NORTH WESTERN TASMANIA TOURS & ACCOMMODATION



DEVILS @ CRADLE

Devils @ Cradle is a Tasmanian devil conservation sanctuary. Get up close and personal with Tasmanian devils and quolls on a guided tour.

During a Day Keeper Tour, observe these extraordinary animals up close while a keeper explains their lifestyle and the threats that confront them. Experience a rare and close up viewing of devils and quolls feeding during an After Dark Feeding. Quite a spectacular sight!

Operator: Devils @ Cradle

Duration: Day Keeper Tour: 45 minutes

After Dark Feeding: 1 hour 15 minutes

Open: 9:30am – 5pm daily except Christmas Day

Day Keeper Tour: Daily at 10:30am, 3pm

After Dark Feeding: Daily at 5:30pm (Apr – Mar), 8:30pm (14 Dec 26 – 31 Jan 27)

Day Keeper, Joey Encounter, Dessert with the Devil and Sunset Experience options are available.

	Adult	Child 4-15 yrs
Day Keeper Tour	\$28*	\$15*
After Dark Feeding	\$40*	\$20*



GORDON RIVER CRUISE

Journey along Macquarie Harbour and visit Hells Gates. Be first on the Gordon River and cruise quietly with Spirit of the Wild's electric motors before stepping ashore at Heritage Landing. On Sarah Island, hear stories of convict hardship with an interpretive tour.

Includes:

- Scenic cruise and two walking tours
- Buffet lunch • Morning, afternoon tea, canapés and beverages (Upper Deck only)
- Expert guides • Informative commentary

Operator: Gordon River Cruises

Duration: 6 hours

Departs: Daily from Strahan at 8:30am

Evening Dinner Cruise and The Pillinger Explorer also available.

	Adult	Child 3-16 yrs
Main Deck Central Seating	\$165*	\$80*
Main Deck Window Seating	\$199*	\$89*
Premium Upper Deck Seating	\$355*	\$355*



MORNING HERITAGE CRUISE

Cruise into the heart of Tasmania's iconic wilderness. Explore the rich history of Macquarie Harbour as you navigate Hell's Gates, step ashore to explore convict ruins and ancient rainforest, and savour lunch while cruising the Gordon River. A family-owned and operated business.

Includes:

- Gordon River cruise • Sarah Island guided tour
- Rainforest board walk • Lunch prepared fresh onboard
- Informative commentary

Operator: World Heritage Cruises

Duration: 6 hours

Departs: Daily from Strahan Wharf at 9am

Afternoon Cruise also available 27 Dec 26 – 16 Jan 27.

	Adult	Child 5-16 yrs
Main Deck Centre Seating	\$160*	\$75*
Main Deck Window Seating	\$195*	\$99*
Upper Deck Centre Seating	\$205*	\$205*
Upper Deck Window Seating	\$225*	\$225*

STANLEY SEAVIEW INN



Standard

58 Dovecote Road, Stanley

MAP PAGE 50

From **\$180***

- ❖ Most guest rooms have stunning views over Stanley, The Nut and beaches
- ❖ Close to attractions such as the Tarkine and the Stanley penguin parade
- ❖ Enjoy locally caught seafood at close by restaurants

Location: In the historic town of Stanley and walking distance to plenty of downtown dining options. Distances: Town centre 1km, Beach 1km.

Property Features: Bar, Guest lounge, Children's playground, Guest laundry, Non smoking, Parking (free), 26 rooms.

Room Features: Tea/coffee making facilities, Mini bar, Ironing facilities, Hair dryer.

Max Capacity: Standard/Seaview – 3, Seaview Spa/Seaview Studio/The Suite – 2, 2 Bedroom Seaview – 4, Family Seaview Studio – 5, 3 Bedroom Seaview – 6.



HANLON GUEST HOUSE, STANLEY



6 Marshall Street, Stanley

MAP PAGE 50

From **\$175***

- ❖ A lovely big old heritage home tastefully furnished to suit its coastal location
- ❖ Guest lounge with honesty bar featuring a selection of whiskeys, gins and port along with a range of beers, wines and nibbles

Location: Conveniently situated just around the corner from Stanley's charming historical main street, with a selection of shops, eateries, galleries, The Angel's Share whiskey room and the famous Stanley Hotel nearby. Distances: Town centre 100m, Beach 200m.

Property Features: Guest lounge, Honesty bar, Non smoking, Parking (free), 6 rooms.

Room Features: Heater, TV, Mini bar, Refrigerator, Tea/coffee making facilities, Ironing facilities, Bathrobes, Hair dryer.

Max Capacity: King Cellar/King/Nut View King/Queen Bungalow/Beach View King Suite with Spa & Balcony/Beach View Queen Suite Up Stairs with Balcony – 2.

King Cellar room has a separate private bathroom with a large spa bath down a hallway.



NORTH WESTERN TASMANIA ACCOMMODATION

HORIZON DELUXE APARTMENTS, STANLEY



Luxury Studio

One Bedroom

88 Dovecote Road, Stanley
MAP PAGE 50

From **\$480***

- ❖ All rooms have a luxuriously large spa bath with views
- ❖ Coastal and mountain views from all apartments
- ❖ Visit local attractions such as The Nut and Tarkine Drive

Location: Sits high on the farmland hills, overlooking the township of Stanley and providing magnificent views of the Stanley Nut and surrounding beaches. Distances: Town centre 1km, Beach 1km.

Property Features: Large gardens, Parking (free), 5 rooms.

Room Features: Ocean views, Air-conditioning, Balcony, Mini bar, Barbecue, Kitchen with microwave and dishwasher, Cable TV, Washer/dryer, Ironing facilities, Spa, Bathrobes, Hair dryer, All rooms non smoking.

Max Capacity: Luxury Studio/One Bedroom – 2.



ROSE'S VILLA, STANLEY



86 Dovecote Road, Stanley
MAP PAGE 50

From **\$600***

- ❖ Spacious fully self contained luxury villa
- ❖ Private balcony with spectacular coastal views
- ❖ Premium fixtures, high-end appliances, and custom furnishings

Location: In a scenic area with panoramic views of the iconic "The Nut," nearby beaches, and Rocky Cape National Park. It is situated close to the town centre, within a short drive of local attractions and dining options. Distances: Town centre 1km, Beach 1km.

Property Features: 2 bedrooms, 2 bathrooms, Air-conditioning, Balcony, Smart TVs (3), Mini bar, Fully equipped kitchen with dishwasher, Marble dining table, Fully equipped laundry, Ironing facilities, Parking (free), EV charging facilities, Bathrobes, Hair dryer, Non smoking.

Max Capacity: Villa – 4.



CRADLE MOUNTAIN HOTEL



Standard Queen

3718 Cradle Mountain Road, Cradle Mountain
MAP PAGE 50

From **\$235***

- ❖ At the edge of World Heritage-listed Cradle Mountain-Lake St Claire NP
- ❖ Well-appointed rooms with balconies, views of native wildlife
- ❖ Access to the Cradle Mountain Wilderness Gallery, dining and lounges

Includes full breakfast daily.

Location: On the fringe of the Cradle Mountain-Lake St Clair National Park and 200 metres to the Visitor Information Centre entry to board the bus for the walking trails and access to iconic sites like Dove Lake and the Overland Track. Distances: Moina 17km.

Property Features: Restaurant, Bar, Reading lounges with fireplaces (2), Wilderness boardwalk and Gallery, Gift shop, Guest laundry, Parking (free), EV charging, 60 rooms.

Room Features: Heating, Balcony, Mini bar, Tea/coffee making facilities, Ironing facilities, Hair dryer.

Max Capacity: Standard Queen – 3.



* FROM PRICES ARE A GUIDE ONLY, subject to change and availability and are in Australian Dollars. Prices are per room per night for 2 people, unless otherwise specified and based on the lowest room category for travel in low season. For full terms and conditions, refer to the Booking Conditions on the inside back cover of this brochure.

DISCOVERY RESORTS – CRADLE MOUNTAIN



Standard Cabin

3832 Cradle Mountain Road, Cradle Mountain
MAP PAGE 50

From **\$182***

- ❖ Relax around an open fire in the cosy guest lounge
- ❖ Upgrade your experience and stay in the new Premium Mountain Cabin
- ❖ Dine at the highly acclaimed Hellyers Restaurant

Location: On the edge of the Cradle Mountain-Lake St Clair National Park at the starting point of the Overland Track. Distances: Moina 17km.

Property Features: Restaurant, Bar, Barbecue facilities, Camp kitchen, Convenience shop, Guest laundry, Parking (free), 64 rooms.

Room Features: Air-conditioning, Heating, Kitchen with microwave, Tea/coffee making facilities, Non smoking.

Max Capacity: Standard Cabin/Deluxe 2 Bedroom Cabin – 6, Premium Mountain Cabin – 2.

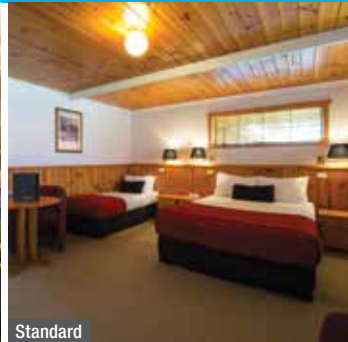


FREE



Premium Mountain Cabin

TALL TIMBERS, SMITHTON



Standard

Scotchtown Road, Smithton
MAP PAGE 50

From **\$240***

- ❖ Stylish rooms and apartments with stunning rural views
- ❖ Two bedroom apartments are situated lakeside
- ❖ Ideal base from which to explore the Tarkine Wilderness

Location: In Smithton, the gateway to the many attractions of the North West coast. Distances: Town centre 1.7km.

Property Features: Pool (heated indoor), Spa, Restaurant, Bar, Room service, Gym, Tennis courts (2), Barbecue area, Bottle shop, Gaming room, Guest laundry, Parking (free), 67 rooms.

Room Features: Heating, Tea/coffee making facilities, Mini bar, Kitchen with microwave (Apartments), Cable TV, Laundry (Apartments).

Max Capacity: Standard – 3, 1 Bedroom Executive Apartment – 2, 2 Bedroom Apartments – 5.



FREE

STRAHAN VILLAGE



Hilltop Standard

41 The Esplanade, Strahan
MAP PAGE 50

From **\$155***

- ❖ On the shores of Macquarie Harbour with access to Gordon River Cruises
- ❖ Range of accommodation blending heritage character with modern comfort
- ❖ Authentic local dining at multiple venues serving fresh Tasmanian produce

Location: Positioned along the Esplanade in Strahan, overlooking the vast Macquarie Harbour, within walking distance to multiple restaurants and activities. Distances: Town centre 30m.

Property Features: Free Wi-Fi (common areas), Restaurant, Bar, Bistro, Café, Guest laundry, Parking (free), 122 rooms.

Room Features: Macquarie Harbour view (some), Balcony (some), Heating, Mini fridge, Tea/coffee making facilities, Ironing facilities, Hair dryer.

Max Capacity: Hilltop Standard – 3, Harbour View Village Waterfront Cottage/Village Spa Terrace/Premium Harbour View – 2, Hilltop Apartment – 4.





Josef Chromy Wines

Tourism Tasmania/Rob Burnett

LAUNCESTON & THE EAST COAST

As the island's second largest city, Launceston features Georgian architecture, beautiful parks, great food and the stunning Cataract Gorge, which can be seen either by foot or on a cruise. Wine lovers will enjoy the Tamar Valley Wine Route.

Discover Tasmania's East Coast, home to iconic destinations including the Bay of Fires, Binalong Bay, Freycinet National Park and Wineglass Bay. There are also picturesque holiday towns dotted up and down the coast including Swansea, St Helens and Scamander.

SEE

- Spend a couple of hours browsing the Queen Victoria Museum & Art Gallery in Launceston
- Enjoy views of Wineglass Bay from Freycinet National Park

DO

- Follow the Tamar Valley Wine Route, which extends for some 170 kilometres
- Stroll the stunning white beach at the Bay of Fires

EAT & DRINK

- Stop by the Christmas Hills Raspberry Farm and try their berry-inspired menu

WHAT'S ON

Bay of Fires Winter Arts Festival
June

Royal Launceston Show Day
8 October

Taste the Tamar
October



LAUNCESTON & SURROUNDS

REF.	APARTMENTS	PAGE
1	Country Club Villas, Prospect Vale	56
2	Discovery Parks – Hadspen	56
REF.	HOTELS	PAGE
3	Country Club Tasmania, Prospect Vale	56
4	Hotel Grand Chancellor Launceston	57
5	Mercure Launceston	56

THE EAST COAST

REF.	APARTMENTS	PAGE
6	Swansea Cottages & Lodge Suites	57
REF.	HOTELS	PAGE
7	Freycinet Lodge	57
8	Panorama Hotel, St Helens	57



CATARACT GORGE CRUISE

Experience Launceston's iconic Cataract Gorge on a 50-minute cruise. Glide along the Tamar River past historic wharves, heritage buildings, and the Seaport precinct before entering the spectacular gorge. Towering cliffs, and native bush surround you, complemented with engaging commentary on the region's history, wildlife, and geology – a must-do Launceston experience.

Includes:

- 50 minute Cataract Gorge cruise
- Informative commentary

Operator: Tamar River Cruises

Duration: 50 minutes

Departs: Daily from Launceston at 9:30am, 10:30am, 11:30am, 1:30pm, 2:30pm, 3:30pm, 4:30pm* (Apr – May, Sep – Mar), 11:30am, 12:30pm, 1:30pm (Jun – Aug)

+4:30pm departure (Jan – Mar). Batman Bridge Luncheon Cruise and Afternoon Discovery Cruise prices also available.

	Adult	Child 5-16 yrs
Scenic Cruise	\$45*	\$20*



LET'S DO LUNCH

Situated just 10 minutes drive from the Launceston city centre and airport, the Josef Chromy estate is an essential addition to your Northern Tasmanian itinerary. Enjoy a guided wine tasting on arrival before retiring to the Josef Chromy hatted Restaurant for a beautiful 2 course lunch of fine Tasmanian produce with paired wines.

Includes:

- Wine tasting
- 2 course lunch with paired wines

Operator: Josef Chromy Wines

Duration: 2 hours 30 minutes

Departs: Daily from Josef Chromy Wines at 11am, 12 noon, 1pm (1 Apr – 11 May, 8 Sep – 20 Dec 26, 5 Jan – 31Mar 27), Thu to Mon (12 May – 9 Sep 26)

Not suitable for children under 18 yrs.

	Adult
Wine Experience with Lunch	\$135*



CRADLE MOUNTAIN DAY TOUR

An active day exploring Tasmania's iconic Cradle Mountain with 5 hours in the national park. Choose the stunning Dove Lake Circuit or climb to Marion's Lookout for breathtaking views, and enjoy stops at Van Dieman's Ice Creamery, Christmas Hills Raspberry Farm, and Sheffield's famous murals.

Includes:

- Choice of walks: moderate Dove Lake Circuit or challenging Marion's Lookout
- National park fees
- Professionally guided and interpreted walks
- Return transfers from selected Launceston accommodation

Operator: Tours Tasmania

Duration: 10 hours 30 minutes

Departs: From Launceston at 7:30am, Mon, Wed, Fri (May – Nov), Mon to Fri (Dec – Apr)

Not suitable for children under 8 yrs.

	Adult	Child 8-15 yrs
Sightseeing Tour	\$175*	\$165*



WINEGLASS BAY EXPLORER

An active day exploring iconic Wineglass Bay in Freycinet National Park with flexible walking options for all fitness levels. Hike to the famous lookout, explore Honeymoon Bay, Sleepy Bay, and Cape Tourville Lighthouse. Journey through historic Georgian townships and stop at Devil's Corner Winery on your return to Launceston.

Includes:

- Expert driver/guide
- Informative commentary
- National park fees
- Return transfers from selected Launceston accommodation

Operator: Tours Tasmania

Duration: 10 hours 30 minutes

Departs: Tue, Thu from Launceston at 7:30am

Not suitable for children under 8 yrs.

	Adult	Child 8-15 yrs
Sightseeing Tour	\$175*	\$165*



WINEGLASS BAY CRUISE

Step aboard, Schouten Passage II, for an unforgettable four and a half hour cruise. Travel from the gentle shores of Coles Bay along the rugged granite coastline of the Freycinet Peninsula to the world-famous Wineglass Bay.

Includes:

- 4 hour 30 minute coastal wilderness cruise
- Informative commentary
- Expert guide
- Morning tea (Sky Lounge)
- Tasmanian Ploughman's style light lunch
- Alcoholic and non-alcoholic beverages (Sky Lounge)

Operator: Wineglass Bay Cruises

Duration: 5 hours

Departs: Daily from Coles Bay at 9:45am

Sky Lounge not suitable for children under 18 yrs.

	Adult	Child 3-16 yrs
Vista Lounge	\$210*	\$130*
Sky Lounge	\$325*	N/A

LAUNCESTON ACCOMMODATION

DISCOVERY PARKS – HADSPEN



Standard Cabin

Corner Main Street & Meander Valley Highway, Hadspen
MAP PAGE 54

From **\$110***

- ❖ Spacious cottages with all the comforts of home
- ❖ Communal campfires (seasonal)
- ❖ Gateway to the Tamar Valley wine region

Location: Only a 15 minute drive from Launceston with the South Esk River a short stroll away. Perfectly positioned to explore wineries, national parks, and family attractions. Distances: Launceston 12km.

Property Features: Supermarket, Fuel Station, Barbecue facilities, Kiosk, Games room, Children's playground, Guest laundry, Parking (free), 26 rooms.

Room Features: Air-conditioning, Heating, TV, Kitchen with microwave, Tea/coffee making facilities, Ironing facilities, Hair dryer.

Max Capacity: Standard Cabin/Superior Cottage – 6, Superior Spa Cabin – 4.



COUNTRY CLUB VILLAS, PROSPECT VALE



1 Bedroom

10 Casino Rise, Prospect Vale
MAP PAGE 54

From **\$170***

- ❖ State-of-the-art driving range, newly opened mini golf and horse riding
- ❖ A true resort experience with recreation, nature, and relaxation all in one
- ❖ Championship golf course due to open in summer 2026/27

Location: Set among 300 acres of parkland, lakes and paddocks yet only minutes' drive from Launceston CBD. Distances: Launceston 8km.

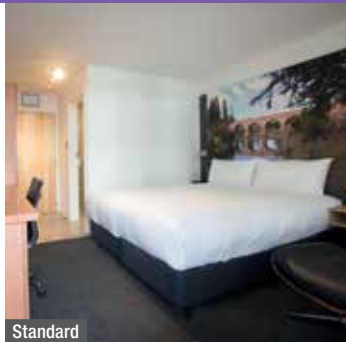
Property Features: Pool (heated indoor), Spa, Restaurants (2), Bar, Bottleshop, Gym, Tennis court, Children's playground, Access to all Country Club Tasmania facilities, Parking (free), Courtesy shuttle between Country Club Villas and main complex, 78 rooms.

Room Features: Air-conditioning, Cable TV, Kitchen with microwave.

Max Capacity: 1 Bedroom – 3, 2 Bedroom Villa – 5, 3 Bedroom Villa – 7, Villa Suite – 2.



MERCURE LAUNCESTON



Standard

3 Brisbane Street, Launceston
MAP PAGE 54

From **\$181***

- ❖ Titanium Bistro offers a relaxed dining atmosphere
- ❖ Spacious rooms with stylish décor and comfortable bedding
- ❖ Located in the CBD, directly opposite the historic City Park

Location: Perfectly positioned in the Launceston CBD, overlooking tranquil City Park, with easy access to dining and local attractions. Boags Brewery and the Queen Victoria Museum and Art Gallery (QVMAG) are in walking distance. Distances: Brisbane Street Mall 800m.

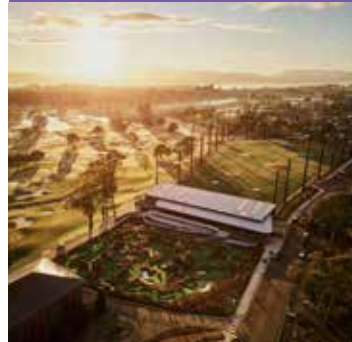
Property Features: Restaurant, Bar, Room service, Guest laundry, Parking (free), Lift, 79 rooms.

Room Features: Air-conditioning, Flatscreen LED TV, Mini bar, Tea/coffee making facilities, Ironing facilities, Hair dryer, Safe.

Max Capacity: Standard/Classic/Premium – 2, Deluxe – 3.



COUNTRY CLUB TASMANIA, PROSPECT VALE



Deluxe King

Country Club Avenue, Prospect Vale
MAP PAGE 54

From **\$165***

- ❖ State-of-the-art driving range, newly opened mini golf and horse riding
- ❖ A true resort experience with recreation, nature, and relaxation all in one
- ❖ Championship golf course due to open in summer 2026/27

Location: Surrounded by picturesque natural bushland and lakes and a short drive from Launceston. Distances: Launceston 8km.

Property Features: Driving range, Casino, Pool (heated indoor), Spa, Restaurants (5), Bars (4), 24 hour room service, Gym, Squash court, Tennis court, Sauna, Horse riding, 24 hour reception, Parking (free), 104 rooms.

Room Features: Air-conditioning, Mini bar, Tea/coffee making facilities, Cable TV.

Max Capacity: Deluxe King/Golf Executive/Courtyard Executive – 2, Deluxe Twin/Courtyard Suite/Golf View Suite – 3.



THE EAST COAST ACCOMMODATION

HOTEL GRAND CHANCELLOR LAUNCESTON



Superior King

29 Cameron Street, Launceston
MAP PAGE 54

From **\$180***

- ❖ Walking distance to City Park, UTAS Stadium and Boags Brewery
- ❖ Short distance from the stunning Cataract Gorge and other local attractions
- ❖ Avenue Restaurant is open daily for breakfast, all day dining and dinner

Location: In the historic section of Launceston, just steps from the CBD, and across the street from the celebrated Harvest Market (Saturdays). Situated perfectly to take advantage of local restaurants and shopping, or to travel leisurely up the Tamar River for further culinary exploration. Distances: Brisbane Street Mall 500m.

Property Features: Restaurant, Bar, 24 hour room service, Guest laundry, Lift, 24 hour reception, Parking (on-site – extra charge), 165 rooms.

Room Features: Air-conditioning, Tea/coffee making facilities, 50" television with smart service including chrome casting, Ironing facilities, Hair dryer.

Max Capacity: Superior King – 2, Superior Twin – 4.



PANORAMA HOTEL, ST HELENS



Garden View King

1 Quail Street, St Helens
MAP PAGE 54

From **\$183***

- ❖ Spacious rooms all with their own deck or patio
- ❖ Dine on local seafood at The Panorama Bistro & Deck
- ❖ Close to mountain bike trails, wineries and award-winning Binalong Bay

Location: Absolute waterfront setting on Georges Bay, surrounded by eight acres of gardens and lagoons, with views of the bay and nearby marina. It is within easy walking distance of the town's cafés and shops and is the gateway to the nearby Bay of Fires. Distances: Town centre 800m.

Property Features: Pool (seasonal), Terrace deck, Restaurant, Bar, Guest lounge, Guest laundry, Parking (free), 57 rooms.

Room Features: Air-conditioning, Heating, Balcony, Flatscreen TV, Refrigerator, Tea/coffee making facilities, Ironing facilities, Hair dryer, Safe.

Max Capacity: Garden View King/Water View King – 2, Garden View Twin/Garden Family/Water View Twin/Water View Family – 2 adults/2 children.



SWANSEA COTTAGES & LODGE SUITES



Lodge Double Suite

43 Franklin Street, Swansea
MAP PAGE 54

From **\$310***

- ❖ Choose from heritage-style suites, a deluxe cabin or 2 & 3 bedroom cottages
- ❖ Some rooms have a spa bath
- ❖ Easy drive to Coles Bay, Bicheno, Triabunna and Port Arthur

Location: A short stroll to shops, restaurants and services with a host of attractions and diverse range of wineries nearby. Distances: Town centre 250m, Beach 50m.

Property Features: Beach access, Expansive cottage gardens, DVD library, Bicycle hire, Barbecue area, Fire pit, Tennis courts (2), Guest laundry, Parking (free), 12 rooms.

Room Features: Air-conditioning, Verandah (Cottage), Limited cooking facilities (Suite), Kitchen (Cottage), Microwave, Washer/dryer (Cottage).

Max Capacity: Lodge Double Suite/Lodge Attic Spa Suite/Deluxe Cabin 1 Bedroom Chalet – 2, Lodge Family Suite – 3, 2 Bedroom Dove Cottage – 4, 2 Bedroom Kirby Cottage – 5, 2 Bedroom Cherry Cottage/2 Bedroom Family Swan Cottage/2 Bedroom Pier Cottage – 5 adults/1 child, 3 Bedroom Bayview Spa Cottage – 7.



FREYCINET LODGE



One Room Cabin

Freycinet National Park, Coles Bay
MAP PAGE 54

From **\$390***

- ❖ Immerse yourself in nature, iconically located in Freycinet National Park
 - ❖ Cabins blend into bushland, comfort with minimal environmental impact
 - ❖ Dining venues with Great Oyster Bay views, serving fresh Tasmanian produce
- Includes full breakfast daily.**

Location: In the heart of Freycinet National Park bushland on the shores of Great Oyster Bay, and accessible to all local activities and attractions. Distances: Town centre 2.6km.

Property Features: Free Wi-Fi (in the main lodge), Restaurants (2), Bar & Lounge, Tasmanian tastings, Massage facilities (in-room), Walking tour and activity ticket sales, Gift shop, E-bike hire, Guest laundry, Parking (free), EV charging, 70 rooms.

Room Features: Air-conditioning, Balcony, Tea/coffee making facilities, Mini bar, Ironing facilities, Hair dryer.

Max Capacity: One Room Cabin – 2, Family Cabin – 4.



ACCOMMODATION INDEX

VICTORIA

MELBOURNE

1 Hotel Melbourne	24
Adina Apartment Hotel Melbourne	22
Aspire Melbourne	21
Crown Metropal Melbourne	25
Crown Promenade Melbourne	23
Crown Towers	25
Crowne Plaza Melbourne	22
Holiday Inn Express Melbourne Little Collins	21
Hotel Indigo Melbourne on Flinders	21
Laneways by Ovolo	23
Lanson Place Parliament Gardens	26
Pan Pacific Melbourne	26
Quincy Hotel	23
Rendezvous Hotel Melbourne	24
Rydges Melbourne	24
The Savoy Hotel on Little Collins	24
Travelodge Hotel Melbourne, Docklands	22
Vibe Hotel Melbourne	22
Vibe Hotel Melbourne Docklands	25
The Victoria Hotel	21

GEELONG & GREAT OCEAN ROAD

Discovery Parks – Warrnambool	27
Holiday Inn & Suites Geelong	27

YARRA VALLEY

Chateau Yering Hotel	29
Yarra Gables Motel	29
Yarra Valley Grand Hotel	29
Yarra Valley Lodge	29

MORNINGTON PENINSULA & PHILLIP ISLAND

InterContinental Sorrento Mornington Peninsula	31
Peninsula Hot Springs	31
Phillip Island Apartments	31
Quarters at Flinders Hotel	31

TASMANIA

HOBART

Crowne Plaza Hobart	48
Discovery Parks – Hobart, Risdon	47
The Henry Jones Art Hotel	49
Hotel Grand Chancellor Hobart	48
Lenna of Hobart	48
MACq 01	49
The Old Woolstore Apartment Hotel	48
Salamanca Terraces	47
The Tasman, a Luxury Collection Hotel, Hobart	49
Travelodge Hobart	47
Vibe Hotel Hobart	47
Wrest Point, Sandy Bay	49

NORTH WESTERN TASMANIA

Cradle Mountain Hotel	52
Discovery Resorts – Cradle Mountain	53
Hanlon Guest House, Stanley	51
Horizon Deluxe Apartments, Stanley	52
Rose's Villa, Stanley	52
Stanley Seaview Inn	51
Strahan Village	53
Tall Timbers, Smithton	53

LAUNCESTON

Country Club Tasmania, Prospect Vale	56
Country Club Villas, Prospect Vale	56
Discovery Parks – Hadspen	56
Hotel Grand Chancellor Launceston	57
Mercure Launceston	56

THE EAST COAST

Freycinet Lodge	57
Panorama Hotel, St Helen's	57
Swansea Cottages & Lodge Suites	57



Bay of Fires, Tasmania

Please read these Booking Conditions carefully as they apply to all bookings with Viva Holidays.

HOW TO BOOK

Contact your ATIA travel agent and request a reservation. All verbal quotes provided are an estimate only and subject to change until confirmed in writing.

PRICES & CONDITIONS

This brochure was produced on 29 January 2026. Unless otherwise stated, prices are in Australian dollars and include GST where applicable. All prices are subject to availability, subject to change and can be withdrawn or varied without notice. Prices are to be used as a guide only. Accommodation prices are based on the lowest room category in low season. All other prices are based on travel in low season. Some prices are based on dynamic rates, which means the price may be higher or lower than the advertised price if the price has been varied by the supplier after this brochure was printed. Price changes may occur by reason of matters outside our control which increase the cost of the Product or Service. Such factors include (without limitation) adverse currency fluctuations, fuel surcharges, or increase to taxes. Surcharges and minimum stays may apply due to demand, Christmas and New Year's Eve, school and public holidays, special events and other circumstances. All prices are the lowest available prices at the time of print and are a guide only. Please check all prices, availability, fees, conditions and information with your travel agent before booking.

If we must change any part of your booking for reasons beyond our control, for example, an Accommodation Supplier overbooks accommodation, or if there is an increase in taxes or Supplier charges, we will notify you. If any such changes result in your holiday costing more or otherwise being materially different from that originally booked, you may cancel the booking and we will refund any monies already paid less any charges levied by Suppliers.

PRICES DO NOT INCLUDE

Anything not specifically indicated as being an inclusion.

OMISSIONS & ERRORS

While every effort is made to ensure the accuracy and currency of the information in the brochures, errors or omissions may occur. All errors and omissions identified post the date of publication are notified to our retail partners to advise you. Please check with your agent for all up-to-date corrections, including prices and inclusions.

DEPOSITS & FINAL PAYMENTS

Deposit

A minimum non-refundable deposit of \$55 per person is payable within 7 days of confirmation of your booking. You will be notified at the time of booking if any additional deposit is required. All deposits are non-refundable for changes of mind or cancellations by you (subject to your rights under the Australian Consumer Law).

Final Payment

Final payment of your holiday cost is required no later than 30 days prior to departure or by sale end date or by the payment deadline specified in individual package conditions, whichever is earlier. Some services may require full payment at the time of booking. For bookings made less than 31 days prior to travel, full payment of holiday cost is required at the time your booking is confirmed.

Please ensure payments are made by the due dates. If this does not happen, our system will automatically cancel the booking without notice or liability to you.

Only upon payment of the full cost of your holiday do you have a final booking with the Supplier of the relevant good and/or service. In arranging your booking, Viva Holidays is acting as the agent of the Supplier of the relevant Product and at no time do you have a contract with Viva Holidays.

CREDIT & DEBIT CARD SURCHARGES

A fee will apply for payments made by debit and credit cards. Fees may vary depending on card type. Please check this fee with us or your travel agent when booking.

FEES

Amendment Fees

If you wish to change your booking prior to departure, an amendment fee of \$30 will be charged if the overall value of the booking remains the same or decreases, in addition to any fees imposed by the Supplier of each service booked.

Late Booking Fees

A fee of \$30 will be charged for all bookings made less than 7 days prior to travel.

All fees can be varied without notice.

CANCELLATIONS & REFUNDS

Prior to Final Payment

Your deposit is forfeited.

After Final Payment

There will be no refund of your deposit, in addition to any fees imposed by the Supplier, which may be up to 100% of monies paid.

After Travel

There will be no refund if you cancel your booking once travel has commenced. There will be no refund for unused services, except for OPEN DATED services where the service was not booked with the Supplier. Requests for refunds received more than 6 months after departure date will not be accepted.

Should a refund after departure be approved, a \$110 refund processing fee will apply.

RESPONSIBILITY

Viva Holidays acts as an agent for the Suppliers (transport, tour, event or accommodation providers) who provide the various goods and/or services (Products). All bookings are subject to the terms and conditions and limitations of liability imposed by each Supplier. It is therefore important for you to obtain and read the applicable Supplier's terms and conditions as they may limit or exclude their liability to you.

In producing this brochure, we have used information provided by Suppliers. Irrespective of any measures taken by us to ensure the information contained in this brochure is accurate at the time of printing, Viva Holidays disclaims and will be exempt from liability in respect of anything misleading, false, incomplete or inaccurate and any errors, misdescription and all associated disappointment, loss, expense, damage, inconvenience, delay, death, shock, illness or injury, however caused.

Viva Holidays does not control the manner in which Products featured within this brochure are provided. Viva Holidays disclaims and will be exempt from liability for anything to do with the supply of such Products. This includes liability (whether as a matter of contract, tort, statute, restitution, or otherwise) for any direct, indirect or consequential loss, liability, claim, cost, expense, proceeding, demand, penalty, disappointment, death, injury, illness, shock, inconvenience or delay. This limitation of liability also applies irrespective of the cause, including negligence of us or a Supplier, withdrawal, cancellation or failure to provide a Product, delay, any variation in the Product, the provision of substitute Products or a change in the Supplier. Without limitation, Viva Holidays will not be responsible if the Product is not available due to inclement weather conditions or other acts of God, civil disturbances, fire, floods, acts of Government or any other authorities, accident to or failure of machinery or equipment or industrial action.

MAPS & PHOTOGRAPHS

The maps in this brochure are intended as a guide only and are not to scale. They do not necessarily reflect actual routings or accommodation or attraction locations. Accommodation room photographs are representative only and actual rooms occupied may vary in decor and inclusions from those shown.

Some images used in this brochure are supplied courtesy of tourist bureaus, hotels, tour operators, Tourism Australia, Visit Victoria, Phillip Island Nature Parks, Tourism Tasmania, Wineglass Bay Cruises, RACT Destinations, Adam Gibson, Airship Solutions Pty Ltd, Alastair Bett, Andrius Lipsys, Archie Sartracom, Belinda Van Zanen, Ben Savage, Daniel Tran, Emilie Ristevski, Jason Charles Hill, Jesse Hisco, John Gollings, Kathryn Leahy, Kellie Tubb, Luke O'Brien Photography, Mark Watson, Nick H Visuals, Pete Harmsen, Peter Foster, Rob Burnett, Robert Blackburn, Shannyn Higgins, Stu Gibson, Tim Shaw and William Watt.

PRODUCT DESCRIPTIONS

Product descriptions and accommodation ratings featured in this brochure are provided by the individual Suppliers. Facilities, features or ratings are subject to change at any time. Tours may not operate on certain dates and durations and departure times are approximate only. You should check at the time of booking for any changes to published information of which we may be aware.

BONDS

Bonds or credit card imprints are required by most Suppliers at the time of check-in to cover incidentals and fees not included in your holiday cost.

TRANSFERS & TOURS

Some Accommodation Suppliers provide courtesy transfers to/from the airport. It is essential that these transfers are pre-booked. Some Tour Suppliers provide complimentary pick up and return to your holiday accommodation and require a minimum number of passengers to operate. If minimum numbers are not achieved tours may be cancelled at short notice. Additionally, some Suppliers reserve the right to cancel departures for other reasons, including bad weather. Some tours and itineraries may also vary and attractions may be substituted due to seasonal conditions. Viva Holidays will not be held liable for a service variation, cancellation, delay or withdrawal, or a Supplier's failure to notify you. A full refund applies for the cancelled tour.

TRAVEL INSURANCE

We strongly recommend you take out appropriate travel insurance to cover your travel arrangements.

PRIVACY

Viva Holidays collects information about you (including health information where necessary) to provide products and services to you, process your travel arrangements, facilitate your participation in loyalty programs and conduct marketing activities and market research. If the information is not provided, Viva Holidays may not be able to provide the Service requested. Viva Holidays may disclose your personal information to its related companies, carriers, travel service providers, organisations which provide services to Viva Holidays (more details are available in our Privacy Statement on our website vivaholidays.com.au) and various law enforcement agencies, airports and governments around the world for security, customs and immigration purposes. You may gain access to the information Viva Holidays holds about you by contacting our Privacy Officer in writing at 179 Normanby Road, South Melbourne VIC 3205 Australia or on privacyofficer@vivaholidays.com.au.

MONIES NOT HELD ON TRUST

All monies paid by you to us will be the property of Viva Holidays and will be a debt due and payable to the relevant Supplier (contingent on availing) once the services to which the money relates have been availed, or the relevant booking is cancelled (subject to cancellation fees). You agree and acknowledge that such monies will not be held by Viva Holidays on trust for or on behalf of you, and we may hold such monies in any account as we see fit, including with our own and/or other customer monies.

GOVERNING LAW

These conditions are governed by the laws of Victoria, Australia and any action arising under them or in any way connected with a booking may be brought only in a court in Victoria, Australia, subject to any law which is expressly inconsistent with this.

You acknowledge that you are 18 years of age or older and that you understand and agree with the above terms and conditions and our Privacy Policy. Please read our full booking terms and conditions at vivaholidays.com.au/policies/booking-conditions.



The Neck, Bruny Island, Tasmania

Tourism Tasmania/Adam Gibson

To book, see your preferred Travel Agent or vivaholidays.com.au for information

YOUR VIVA HOLIDAYS PREFERRED AGENT:

Empty box for listing a preferred travel agent.

**VIVA
HOLIDAYS**

Reservations: 1300 872 835 | online.enquiries@vivaholidays.com.au
Travel Agents Reservations: 13 27 87 | reservations@vivaholidays.com.au

