

helloworld
TRAVEL
THE TRAVEL PROFESSIONALS

FIJI



EXPERIENCE FIJI WITH VIVA HOLIDAYS

Famous for its sundrenched islands, palm fringed white sand beaches, turquoise blue waters, lush rainforests and rugged volcanic peaks, Fiji offers something for everyone. Stay in luxury resorts, indulge in spa treatments or discover a slice of traditional village life. Be assured you'll always receive a friendly 'bula' welcome!

With over 50 years of experience in the travel business, trust us to make your dream Fiji holiday a reality.

CHOOSE VIVA HOLIDAYS AND LIVE A LIFE OF TRAVEL.





CONTENTS

Planning Ahead	7
Experiences You'll Love	8
Island Adventures	10
Car Hire	11
Transfers	12
Tours	15
Nadi & Surrounds	18
Denarau Island	20
Coral Coast & Pacific Harbour	25
Mamanuca & Yasawa Islands	30
Regional Fiji	38
Island Cruising	41
Accommodation Index	42
Booking conditions	43

WHY CHOOSE VIVA HOLIDAYS

Viva Holidays has been creating exceptional worldwide holiday experiences for over 50 years. Your arrangements will be managed by our local travel specialists who are experts in designing holidays to perfectly suit your travel needs. You'll always be in experienced hands when you book with Viva Holidays.

MORE CHOICE

Our exclusive product range caters for every type of holiday. Accommodation, car hire, theme parks, attractions, day and extended tours, rail and cruises - we've got it covered.

With incredible deals available throughout the year, make sure you ask your travel agent for our best offers.

EXCEPTIONAL SERVICE

Exceptional customer service is behind everything we do. That's why we were recognised as the Most Outstanding Wholesaler – Product/Service in 2023 and 2024 at the National Travel Industry Awards. Our Australian-based team are passionate about travel and providing outstanding service. Let us do the research, planning and booking to ensure your holiday is one you'll always remember.



PEACE OF MIND

Viva Holidays is a proud member of ATIA Accreditation, the Australian Travel Industry Association's accreditation scheme that sets the benchmark of quality for the travel industry. When you book your holiday with Viva Holidays, you will have peace of mind knowing that you are booking with one of Australia's most trusted travel companies.

24/7 ASSISTANCE

When you book with Viva Holidays, you'll never be on your own. In the event of unforeseen circumstances, our customer care team is available 24 hours a day, seven days a week.

TAILOR MADE HOLIDAYS

Whether it's island hopping around the stunning Mamanuca and Yasawa Islands, seeking adventure on a jetboat ride on the Sigatoka River or simply relaxing at a beachfront resort, our team of travel specialists can design a custom made itinerary just for you!

Let us create your dream holiday today.

LIVE A LIFE OF TRAVEL. LET VIVA HOLIDAYS TAKE YOU THERE!







- ✈ INTERNATIONAL AIRPORT
- ✈ REGIONAL AIRPORT

PLANNING AHEAD

Fiji is a wonderful place to visit all year round. Before you begin your next trip, make sure to read our helpful travel information, to ensure you make the most of your time in Suva and beyond.



Tourism Fiji/Chris McLennan

PACIFIC OCEAN



WHEN TO GO

Fiji enjoys a tropical climate all year round. Between the months of May and October, the humidity drops and it's the perfect time for swimming or lazing on white sandy beaches, exploring beneath the waves and discovering the jungle-clad inland. Divers and snorkellers will experience increased visibility around the coral reefs.

From November to April, known as the green season, temperature and humidity start to climb. This time of the year is often characterised by afternoon showers that bring a welcome respite from the heat.

GETTING AROUND

Fiji is the perfect destination for a driving holiday. Take the time to explore and discover as you make your way around. Driving is on the left hand side of the road, with the maximum speed limit in villages and towns 50km/h and 80km/h along the highway and in less populated areas.

A current drivers licence from an English speaking country is required, while drivers from other countries need an international driving permit.

LANGUAGE

English is the official language. Several Fijian dialects and Fijian Hindi are also widely spoken.

TIME

Fiji is 2 hours ahead of Australian Eastern Standard Time (AEST).

VISAS & PASSPORTS

All travellers to Fiji must carry a passport valid for at least six months beyond the date of departure from Australia. As visa information can change at any time, we recommend you seek advice regarding passports, visas, and other travel requirements at smartraveller.gov.au.

CURRENCY

Fijian Dollar (FJD).

ATMs are located in major urban areas. All major credit cards are widely accepted.

TIPPING & BARGAINING

Tipping is not encouraged in Fiji. Bargaining is generally not encouraged, however may be acceptable with some Indo-Fijian merchants.

ETIQUETTE

Dress modestly when outside your hotel or resort, and remove hats and sunglasses when visiting villages. Females should cover their knees and shoulders when visiting temples and villages.

ELECTRICITY

240V 50Hz. An international adapter is not required.

TEMPERATURE & RAINFALL

Nadi	J	F	M	A	M	J	J	A	S	O	N	D
Temperature (max °C)	31	31	31	30	29	28	28	28	29	29	30	31
Average rainfall (mm)	299	302	324	163	78	62	46	58	77	103	138	159

EXPERIENCES YOU'LL LOVE

The best part of any journey is the experiences you have along the way, leaving you with memories to relive long after the holiday is over.

Fiji has countless amazing things to see and do. Here are some of our favourites to inspire your wanderlust.





Malamala Beach Club

HIP BEACH CLUBS

Head to a beach club for a memorable Fijian experience. The world's first island beach club - Malamala Beach Club – offers infinity pools and cabanas with views of crystal-clear waters across the Mamanucas. At Cloud 9, Fiji's floating bar and pizzeria, sip on cocktails, listen to music or swim in the turquoise waters surrounding the pontoon.



Tokoriki Island Resort

SNORKELLING & DIVING

Fiji is known as the soft coral capital of the world and offers some of the best year-round diving and snorkelling. The Mamanuca and Yasawa Islands are great for viewing colourful coral and fish. Rakiraki is one of Fiji's best kept diving secrets. Namena Marine Reserve is a highlight, with diverse waters and the chance to swim with humpback whales.



Kava Ceremony, Mana Island, Mamanuca Islands

FIJIAN CULTURE

A village visit is a highlight of any Fijian holiday and provides a great insight into the traditional way of life. Take part in a kava ceremony, sample authentic Fijian cuisine at a Lovo feast and marvel at the ancient ritual of firewalking, or immerse in the rich traditions and history of Fiji at one of the many resorts' cultural nights.



Navua River

ADVENTURE ACTIVITIES

In Fiji, many adventure experiences can be checked off even the most impressive bucket list. Pacific Harbour is Fiji's adventure capital from thrilling jet boat rides and white water rafting to ziplining through lush rainforests and quad biking. In the Yasawa Islands, dive with sharks or swim with the giant Manta ray.



Blue Lagoon Cruises

SMALL SHIP CRUISING

Go on a journey through paradise and discover the real Fiji. Sail to uninhabited islands, anchor in private lagoons or laze on golden beaches. Blue Lagoon Cruises can negotiate reefs and remote islands with ease. Snorkel from the ship or go ashore and visit one of the local villages dotted throughout the islands.

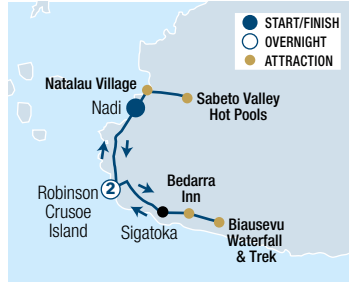


Cloudbreak

SURFING

Fiji is a world-renowned surfing destination with beautiful tropical scenery and waves perfect for every skill level. Take a surf lesson or rent a board on the coral coast or Mamanuca Islands where the waves are perfect for beginners. Experienced board riders won't want to pass up the chance to surf at the world famous Cloudbreak.

ISLAND ADVENTURES



FEEJEE BEACH & CULTURE 2 NIGHTS

Gaze and be amazed while trekking through tropical flat jungle, snorkelling with marine life or posing by the largest coastal waterfall. Dip in the healing comfort of hot mud pools and be authenticated at native villages, municipal markets and participate in a Fijian kava ceremony. This one's for the restless heart!

INCLUDES

- 2 nights accommodation at Robinson Crusoe Island
- Continental breakfast at Robinson Crusoe Island
- Lunch on day 1 and day 3
- Village visit – interact with locals and kids
- Sabeto thermal springs and mud pools
- Sigatoka market visit
- Biausevu Waterfall
- Tour guide and driver

DEPARTS

Wed and Sat from Nadi at 9am

CONCLUDES

Nadi at 6pm

	Adult twin share	Adult sole use
Guided Tour	\$989*[^]	\$1209*[^]

[^]Price includes compulsory meal plan and fee is payable direct to the resorts upon check-in.



SEA BREEZE ISLAND HOPPING 8 NIGHTS

Escape to the lush tropical islands of the Yasawas and Mamanucas in Fiji and discover the true meaning of paradise. Take your time discovering the crystal clear waters, white sandy beaches, stunning shores, and the colourful marine life of the underwater gardens.

INCLUDES

- 6 nights 2½ to 3 star accommodation on the islands
- Pre and post accommodation in Nadi
- All meals on the islands
- Breakfast at Nadi hotel
- Select resort activities
- Transfers between accommodation

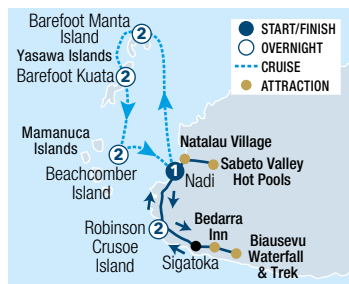
DEPARTS

Daily from Nadi – Arrive any time on day 1

CONCLUDES

Nadi at 6pm

	Adult twin share
Independent Tour	\$2938*[^]



FEEJEE FIVE 9 NIGHTS

Be spellbound on the island of Ratu Kini, the snorkelling haven of Barefoot Manta, Robinson Crusoe Island and Barefoot Kuata and add a truly authentic touch while swimming, snorkelling and swooning in Fiji's natural splendour and heritage for ten momentous days.

INCLUDES

- 9 nights 2½ to 3 star accommodation
- 2 breakfasts
- Lunch on day 1 and day 3
- Sabeto thermal springs & mud pools
- Sigatoka market visit
- Biausevu Waterfall
- Select resort activities
- Transfers between accommodation
- Tour guide and driver on the mainland

DEPARTS

Wed and Sat from Nadi at 9am

CONCLUDES

Nadi at 6pm

	Adult twin share	Adult sole use
Semi-guided Tour	\$3205*[^]	\$3355*[^]

[^]Price includes compulsory meal plans and fee is payable direct to the resorts upon check-in.

* FROM PRICES ARE A GUIDE ONLY, subject to change and availability and are in Australian Dollars. Prices are per person twin share, unless otherwise specified and based on the lowest room category and travel in low season. For full terms and conditions, refer to the Booking Conditions on the inside back cover of this brochure.



AVIS

Why not add Avis to your travel plans and make the most of your holiday by enjoying the flexibility and convenience that an Avis car rental provides. Avis Fiji is situated at five locations around Viti Levu and Vanua Levu, including a 24 hour service at Nadi International Airport. Offering a wide range of late model vehicles to choose from, all at great rates, renting with Avis is sure to make your holiday escape more enjoyable. All Avis vehicles are air-conditioned. Plus you get unlimited kilometres as well as free maps to help you find your destination.

Includes:

- Unlimited kilometres
- Loss Damage Waiver
- Taxes
- Administration fees
- All vehicles include air-conditioning

Does Not Include:

- Excess Reduction
- One way rental fees
- Concession Recovery Fee
- Delivery/collection fees for non-Avis locations
- Fuel
- Bond

Excess:

In the event of loss or damage, an Excess applies to all vehicles. Optional Excess Reduction can be purchased direct for an additional fee.

Based on per vehicle per day (24 hour hire period). Minimum age restrictions and age surcharges apply. A full driver's licence, credit card and security bond is required on collection. Tolls, fuel, additional driver and one way fees apply. An airport fee of FJD35 applies for all rentals picked up from Nadi Airport and Naisori Airport. Vehicles are subject to availability and a similar vehicle to those pictured may be substituted. Not all vehicles are available at all locations. Check with your travel agent for details.



- Overnight Bag
- Large Suitcase

TOYOTA YARIS (or similar)

GROUP B

- 4 door
- Auto
- 4 Cylinders
- 1,3 litre
- Radio/CD
- Driver's airbag
- Remote/central locking



x4



1-2 DAYS	3-6 DAYS	7+ DAYS
\$111*	\$108*	\$93*

GROUP B

TOYOTA HIACE VAN (or similar)

GROUP P

- 4 Door
- Manual
- 4 Cylinders
- Radio/CD
- Power windows
- Central locking
- Dual airbags



x8

Luggage capacity dependant on passenger numbers

1-2 DAYS	3-6 DAYS	7+ DAYS
\$165*	\$161*	\$136*

GROUP P

TOYOTA RAV4 (or similar)

GROUP K

- 4WD
- 5 Door
- Auto
- 4 Cylinders
- 2 litre
- Radio/CD
- Power steering
- Dual airbags



x5



1-2 DAYS	3-6 DAYS	7+ DAYS
\$177*	\$171*	\$146*

GROUP K

TOYOTA HILUX STANDARD (or similar)

GROUP L

- 4 Door
- Manual
- 4 Cylinders
- 2.4 litre
- Radio/CD
- Power steering
- Dual airbags



x5

Luggage capacity dependant on passenger numbers

1-2 DAYS	3-6 DAYS	7+ DAYS
\$198*	\$193*	\$155*

GROUP L

TOYOTA HILUX DUAL CAB (or similar)

GROUP D

- 4WD
- 4 Door
- Auto
- 4 Cylinders
- 2.8 litre
- Radio/CD
- Power steering
- Dual airbags



x5

Luggage capacity dependant on passenger numbers

1-2 DAYS	3-6 DAYS	7+ DAYS
\$236*	\$229*	\$194*

GROUP D

TOYOTA FORTUNER (or similar)

GROUP H

- 4WD
- 5 Door
- Auto
- 4 Cylinders
- 3 litre turbo diesel
- Radio/CD
- Remote/central locking



x5



1-2 DAYS	3-6 DAYS	7+ DAYS
\$279*	\$269*	\$243*

GROUP H

TOYOTA PRADO (or similar)

GROUP Z

- 5 Door
- Auto
- 4 Cylinders
- 3 litre
- Radio/CD
- Power steering
- Dual airbags
- Remote/central locking



x5



No luggage capacity with 7 passengers

1-2 DAYS	3-6 DAYS	7+ DAYS
\$308*	\$298*	\$271*

GROUP Z



TRANSFERS



AIRPORT TRANSFERS

Get your holiday off to a great start with a door to door shared coach transfer or arrive in style by private vehicle. Operating from Nadi Airport 24 hours a day, 7 days a week, Tourist Transport Fiji will ensure you are transferred to your hotel in air-conditioned comfort. All transfers include a personal meet and greet service with a traditional Fijian welcome and bottled water. Vehicles range from modern coaches to four seat private vehicles, 4WDs and mini vans. There is also a fleet of wheelchair accessible vehicles available for the mobility impaired.

So sit back, relax and enjoy the passing scenery.

	SHARE COACH		PRIVATE VEHICLE	
	Per Person	Per Person	Per Vehicle	Per Vehicle
	Adult	Child 2-12 yrs	1 to 3 People	4 to 6 People
Nadi Town/Wailoaloa Beach	\$28* [^]	\$14* [^]	\$38* [^]	\$52* [^]
Denarau	\$33* [^]	\$17* [^]	\$77* [^]	\$95* [^]
DoubleTree by Hilton	\$42* [^]	\$21* [^]	\$88* [^]	\$98* [^]
Vuda Marina/First Landing/Anchorage	\$42* [^]	\$21* [^]	\$82* [^]	\$97* [^]
InterContinental ⁺ /Shangri-La Yanuca Island/Natadola Beach ⁺	\$53* [^]	\$22* [^]	\$186* [^]	\$214* [^]
Outrigger Fiji/Bedarra Inn	\$55* [^]	\$28* [^]	\$203* [^]	\$232* [^]
Fiji Hideaway/Naviti/Tambua Sands/Warwick	\$60* [^]	\$30* [^]	\$228* [^]	\$269* [^]
Crusoes Retreat	N/A	N/A	\$277* [^]	\$330* [^]
Pacific Harbour ⁺	\$108* [^]	\$54* [^]	\$294* [^]	\$337* [^]
Rakiraki ⁺ /Volivoli Beach ⁺	\$123* [^]	\$62* [^]	\$294* [^]	\$337* [^]
Suva via Queens Highway	\$123* [^]	\$62* [^]	\$350* [^]	\$400* [^]

[^]Price is based on one way to/from Nadi Airport. ⁺Minimum 2 adults for Share Coach transfers. Prices to other destinations and larger vehicles also available.

BULA! WELCOME TO FIJI.

Our **EXCLUSIVE** meet and greet service will ensure your holiday gets off to a great start, with a warm Fijian welcome from someone who really knows the destination.

Just book one of our shared coach or private vehicle transfer options and on arrival in Fiji, make your way to the Airport Arrivals Office – it's open every day, 24 hours a day. There you'll find a friendly staff member to greet you with one of those famous Fijian smiles, check your travel arrangements and transfer you to your accommodation in air-conditioned comfort.

With our exclusive Meet & Greet Service, you'll receive:

- A traditional Fijian welcome with a **shell lei**
- Bottle of **Fiji water**

A warm welcome and a wonderful Fijian holiday awaits!





MALOLO CAT

Malolo Cat offers three scheduled launch transfers daily between Port Denarau and Malolo Lailai Island. Get off to a great start by cruising 50 minutes across the beautiful Fiji waters in comfort. The service includes a scheduled coach transfer from Nadi Airport, Nadi or Denarau accommodation to Port Denarau.

Private 24 hour transfers to/from Port Denarau also available.

	Adult	Child 2-11 yrs
Plantation Island Resort/ Lomani Island Resort/ Musket Cove	\$85*[^]	\$43*[^]

[^]Price based on per person one way to/from Nadi Airport, Nadi, Denarau accommodation and Port Denarau.



24 HOUR WATER TAXI SERVICE

Mamanuca Express offers a comfortable 24 hour water taxi service between Port Denarau and all resorts throughout the stunning Mamanuca and lower Yasawa Islands in Fiji. These express speedboat transfers are perfect for flights that arrive outside of scheduled ferry service departures.

Prices for private transfers 5 people and above, shared transfers and inter-island transfers are also available.

	1 to 4 People
Treasure Island/Beachcomber Island/ Serenity Island	\$506*[^]
Castaway Island/Malolo Island/ Tropica Island Resort/Likuliku Lagoon Resort/Plantation Island Resort/ Musket Cove/Lomani Resort	\$721*[^]
Mana Island/Tokoriki Island/ Matamanoa Island/Vomo Island	\$870*[^]

[^]Price based on per boat one way to/from Port Denarau.

SOUTH SEA CRUISES

South Sea Cruises offer seamless, fast transfers to the Mamanuca and Yasawa Island resorts. Scheduled transfers operate from Port Denarau several times a day, every day.

Modern catamarans with multiple lounges, outer viewing decks and fully licensed bars, mean you'll feel like you're on holiday before you even reach your destination.

Resort connections direct from Nadi Airport to Port Denarau are also available (extra charge). A courtesy coach pick-up is available from selected Nadi area, Wailoaloa area and Denarau accommodation to Port Denarau.

Prices from Nadi Airport and Captains Lounge with complimentary drinks and snacks is also available.

	Adult	Child 2-15 yrs
Treasure Island/ Beachcomber Island	\$107*[^]	\$70*[^]
Malolo Island/Castaway Island	\$114*[^]	\$75*[^]
Likuliku Lagoon Resort/ Tropica Island Resort	\$114*[^]	N/A
Mana Island	\$127*[^]	\$84*[^]
Tokoriki Island	\$140*[^]	\$92*[^]
Matamanoa Island	\$140*[^]	N/A
Vomo Island	\$167*[^]	\$109*[^]
Barefoot Kuata/Waya Lailai/ Naqalia	\$142*[^]	\$92*[^]
Octopus	\$145*[^]	\$95*[^]
Mantaray/Barefoot Manta/ Paradise Cove/Korovou/ White Sandy Beach	\$151*[^]	\$99*[^]
Navutu Stars/Long Beach/ Coral View/Coconut Beach/ Nanuya/Gold Coast/ Qarsmans/Blue Lagoon/ Nabua	\$165*[^]	\$108*[^]

[^]Price based on per person one way to/from Port Denarau and selected Denarau hotels.



FLEXIBLE WATER TRANSFERS

Purple Turtle operate on demand water transfer services between Port Denarau Marina and Mamanuca resorts. Transfers can be booked at a convenient time that suits you. Purple Turtle also operates direct scheduled transfers between Denarau and Matamanoa Island Resort.

Includes transfers from Nadi Airport to Port Denarau Marina.

	1 to 6 People
Serenity Island Resort	\$476*[^]
Beachcomber Island Resort	\$546*[^]
Lomani Island Resort/ Plantation Island Resort	\$586*[^]
Castaway Island Resort/ Vomo Island	\$656*[^]
Mana Island Resort	\$685*[^]
Tokoriki Island Resort/ Sheraton Tokoriki	\$853*[^]

[^]Prices are for arrival at resort/pick up from resort between 8am – 4:30pm. Surcharges apply out of hours. Prices based on per boat one way to/from Port Denarau, for 1-6 passengers.



ISLAND HOPPERS FIJI

Fiji's premium helicopter and charter airline service specialises in efficient and reliable air transfers throughout Fiji. The Resort Express Service meets and greets all passengers and transfers guests to a private lounge offering complimentary cold beverages and Wi-Fi.

15kg baggage allowance per person. Other transfer locations also available.

	Adult
Treasure Island/Anchorage/First Landing	\$559 ^{^A}
Plantation/Lomani/Musket Cove/DoubleTree by Hilton	\$577 ^{^A}
Vomo Island/Tokoriki Island/Mana/Castaway/Likuliku/Tropica	\$623 ^{^A}
Intercontinental/Shangri-La	\$623 ^{^A}

^{^A}Price based on per person one way, minimum 2 adults from Nadi Airport.

HELI-TOURS FIJI

For a seamless transition from your international flight to your hotel or resort, Heli-Tours Fiji are the specialists in providing personalised transfers to any resort in Fiji including the Mamanuca & Yasawa Islands, Vanua Levu in the North, the Lau Group, Suva and the Coral Coast.

15kg baggage allowance per person. Other transfer locations also available.

	Adult	Child 3-12 yrs
Serenity Island	\$323 ^{^A}	\$162 ^{^A}
Treasure/Beachcomber Island	\$373 ^{^A}	\$187 ^{^A}
Musket Cove/Lomani Island/Plantation Island	\$408 ^{^A}	\$204 ^{^A}
Castaway Island	\$523 ^{^A}	\$262 ^{^A}
Tokoriki Island/Matamanoa Island	\$592 ^{^A}	\$296 ^{^A}

^{^A}Price based on per person one way from Nadi Airport. Minimum 2 adults on scheduled service to Mamanuca Islands. Minimum 4 adults on services to Yasawa Islands.



EXPLORE THE REAL FIJI

Great Sight's Fiji offers a wide range of half day and full day tours that connect you with the rich culture and diverse scenery that Fiji is famous for. With a professional team of Drivers and Guides, Great Sight's Fiji ensures that you will have a memorable and authentic local experience.



For more information see the Great Sight's Fiji tours including 'Discover Nadi', 'Great Taste of Fiji', 'Thermal Mud Pool & Garden', 'Valley of a Thousand Hills', 'Coral Coast Heritage Tour' and 'Thermal Mud Pool Morning Tour' on page 15.



* FROM PRICES ARE A GUIDE ONLY, subject to change and availability and are in Australian Dollars. Prices are per person, unless otherwise specified and based on travel in low season. For full terms and conditions, refer to the Booking Conditions on the inside back cover of this brochure.



DISCOVER NADI

Explore the Garden of the Sleeping Giant, famous for its collection of orchids. Visit the chiefly village of Viseisei, the legendary landing site of the first Fijians. Continue into Nadi to the site of the largest Hindu temple in the South Pacific. Lastly, take in the colourful sights and friendly faces at the Nadi Market.

Includes:

- Garden of the Sleeping Giant tour
- Viseisei Village tour
- Nadi town and markets
- Sri Siva Subramaniya Swami Temple
- Expert guide
- Return transfers from Nadi and Denarau accommodation

Duration: 4 hours

Departs: Mon to Sat from Nadi at 8am

	Adult	Child 2-12 yrs
Half Day Tour	\$123*	\$62*



GREAT TASTE OF FIJI

Step back in time on this safari exploration. Start with a visit to the picturesque and peaceful village of Sikituru located in the heart of Nadi. On arrival be welcomed with a 'Sevusevu' or Kava ceremony. Get a taste of Fijian food by participating in the preparation, cooking and tasting of meals. Learn about village life with an optional walk to the preschool and village gardens, then end the day with the sight of Nadi temple and a stop in Nadi town for shopping.

Includes:

- Kava ceremony • Food tasting
- Sight of Hindu temple and shopping
- Transport by air-conditioned vehicle
- Return transfers from Nadi and Denarau accommodation

Duration: 4 hours

Departs: Mon to Fri from Nadi and Denarau Resorts at 9:30am

	Adult	Child 2-12 yrs
Half Day Tour	\$112*	\$56*



THERMAL MUD POOL & GARDEN

Explore the Garden of the Sleeping Giant, famous for its collection of orchids and tropical plants. Your next stop is the Thermal Springs and Mud Pools, an array of natural pools to soothe your bones and cleanse the skin. On the return, stop roadside and sample tropical fruit or a cold coconut.

Includes:

- Garden of the Sleeping Giant tour
- Thermal springs and mud pools
- Sabeto Valley surrounds
- Transport by air-conditioned vehicle
- Return transfers from Nadi and Denarau accommodation

Duration: 3 hours

Departs: Mon to Sun from Nadi

	Adult	Child 2-12 yrs
Half Day Tour	\$143*	\$72*



VALLEY OF A THOUSAND HILLS

Travel by 4WD up into the Nausori highlands. Take in the amazing views of the rural landscape to the many islands stretching out from Nadi Bay. Visit the summit and take in the beauty of Viti Levu with uninterrupted views of the Mamanuca Island groups on the seaward side, and 'the valley of a thousand hills' inland. Lastly, visit the largest Hindu Temple in the South Pacific and the colourful Nadi market. This tour offers a mixture of adventure, exploration and culture.

Includes:

- Valley of the thousand hills, Nadi markets and Hindu temple • Transport by air-conditioned 4WD vehicle
- Seasonal fruits and Fiji water
- Return transfers from Nadi and Denarau accommodation

Duration: 3 hours

Departs: Mon to Sat from Nadi and Denarau Resorts at 9am

	Adult	Child 2-12 yrs
Half Day Tour	\$109*	\$54*



CORAL COAST HERITAGE TOUR

Explore one of Fiji's most famous tourist regions - the Coral Coast. Renowned for its amazing shoreline, the Coral Coast has plenty to offer and this tour covers all the highlights. Take in the amazing view over the Mamanuca Island Group from the World War II Momi Battery. Visit Lomawai Village – the home of salt making. Finish off the day with a short 20 minute walk in the rainforest to Biausevu Waterfall.

Includes:

- World War II Momi Battery, Lomanwai Village, Biausevu Waterfall • Experienced driver/guide
- Transport by air-conditioned vehicle
- Lunch at Bedarra Beach Resort
- Return transfers from Nadi and Denarau accommodation

Duration: 8 hours

Departs: Mon to Sat from Nadi at 8am

	Adult	Child 2-12 yrs
Full Day Tour	\$289*	\$145*



THERMAL MUD POOL MORNING TOUR

This tour begins with a scenic half hour drive into the heart of the Sabeto Valley. Enjoy the famous thermal springs & mud pools, an array of natural pools to soothe your bones and cleanse the skin. Enjoy an optional massage to relax your body. Stop by the side of the road on return for some tropical fruit or a cold coconut to finish off your day.

Includes:

- Modern air-conditioned vehicle with driver/guide
- Sabeto Valley surrounds
- Thermal Springs and mud pools
- Fiji water refreshments
- Full body massage (at own cost)

Duration: 2 – 3 hours

Departs: Mon to Sun from Denarau and Martintar Hotels at 9:15am

	Adult	Child 2-12 yrs
Half Day Tour	\$83*^	\$42*^

*FROM PRICES ARE A GUIDE ONLY, subject to change and availability and are in Australian Dollars. Prices are per person, unless otherwise specified and based on travel in low season. For full terms and conditions, refer to the Booking Conditions on the inside back cover of this brochure.

TOURS



FIJI UNTOLD

Be part of an enriching traditional performance with a contemporary twist told through song and dance. The FIJI UNTOLD show will captivate your senses with its Energy! Spirit! Mana! The journey begins with an enticing performance that will awaken your senses and lead you into a state-of-the-art Big Top where you leave with a deeper understanding of Fiji's myths and legends.

Includes:

- World class Broadway style performance and captivating dances
- Return transfers from Nadi and Denarau accommodation

Duration: 3 hours

Departs: Thu and Sun from Nadi at 7pm

	Adult	Child 2-12 yrs
Cultural Show	\$77*	\$51*



SIGATOKA RIVER SAFARI

Experience the natural beauty of the Sigatoka River on this uniquely Fijian adventure. On board a custom built safari jet boat, travel to authentic Fijian villages, experience a day in the life of the real 'kaiviti' (Fijian) and participate in a traditional kava ceremony.

Includes:

- 40 minute safari jet boat cruise
- Kava ceremony
- Safari sulu (sarong) for women
- Tropical Fijian lunch
- Return transfers from selected Coral Coast accommodation

Duration: 4 hours 30 minutes

Departs: Mon to Sat from Sigatoka Town at 8:45am

Other Tour Options:

Tour from Nadi/Denarau **\$271*** per adult, **\$136*** per child, Self Drive **\$227*** per adult, **\$114*** per child.

	Adult	Child 4-15 yrs
Half Day Tour	\$256*	\$129*



ZIPLINE TOUR

ZipFiji is an amazing adventure with five kilometres of zip lines woven into a truly spectacular setting of incredible caves, canyons and breathtaking ocean views. Highly trained guides instruct how to use special equipment and techniques to experience 16 jaw dropping zip lines. This amazing adventure lets you fly higher, faster and longer than ever before on this world-class zip line.

Includes:

- 16 zip lines
- Safety equipment
- Light refreshments
- Return transfers from Nadi accommodation

Duration: 3 hours

Departs: Daily from Nadi at 9am, 2pm

Children aged 3-12 yrs must be accompanied by parent/guardian.

	Adult/Child
Half Day Tour	\$169*



GO DIRTY QUAD BIKE TOUR

Take a quick ride up Nadi's back road, past the biggest Hindu Temple in the South Pacific and then it's time for the off roading adventure to begin. Splash through mud puddles (a seasonal offering), zip by cane fields, and ride higher up the pine forest mountainside before stopping on a mountain plateau overlooking the Mamanuca Islands. Winding tracks take you back to the main road through Nadi town. Enjoy a short ride along our local beach before heading back to base.

Includes:

- Safety gear • Local tour guide
- Snack & refreshments • Free tour photos
- Transfers from Denarau & Nadi Airport region hotels if required

Duration: 2 – 3 hours

Departs: Daily from Nadi at 6:30am, 9:15am, 1:15pm, 4:15pm

Children aged 5-17 yrs must be accompanied by parent/guardian.

	Adult	Child 5-17 yrs
Half Day Tour	\$256*	\$153*



BEACHCOMBER DAY TRIP

Escape to Beachcomber Island for a full day of sun, sea, and unforgettable experiences. Dive into guided snorkelling, turtle feeding and traditional Fijian activities like Kokoda making and basket weaving. Enjoy a beachfront BBQ buffet with local beers, wine, and soft drinks plus kayaking and paddleboarding for extra fun.

Includes:

- Snorkelling • Glass bottom boat and fish feeding
- Traditional Fijian dancing
- Traditional kokoda making
- Morning and afternoon tea • Buffet lunch
- Local beers, house wine and soft drinks
- Return transfers from select Denarau accommodation

Duration: 7 hours

Departs: Daily from Port Denarau at 10am

Transfers also available from Nadi, Coral Coast, Vuda and Natadola/Momi Bay accommodation.

	Adult	Child 4-15 yrs
Full Day Tour	\$171*	\$86*



CLOUD 9 DAY TRIP

Cloud 9 is Fiji's first and original two level floating platform with an internationally stocked bar and Italian wood-fired pizzeria, surrounded by turquoise blue water and picturesque views. Cloud 9 is laid-back and naturally classy, with a fun atmosphere, sundeck, day beds and a surround sound system throughout to create the perfect soundtrack for a magical day.

Includes:

- FJD60 food and beverage credit
- Return boat transfer from Port Denarau to Cloud 9
- Return transfers from Denarau & Nadi hotels, DoubleTree by Hilton Sonaisali

Duration: 5 hours

Departs: Daily from Port Denarau at 9am and 1pm

Not suitable for children under 10 yrs.

	Adult	Child 10-15 yrs
Half Day Tour	\$154*	\$138*

* FROM PRICES ARE A GUIDE ONLY, subject to change and availability and are in Australian Dollars. Prices are per person, unless otherwise specified and based on travel in low season. For full terms and conditions, refer to the Booking Conditions on the inside back cover of this brochure.



ISLAND & REEF DAY SAIL

Sail on a traditional tall ship just an hour from Denarau to the beautiful white-sand beach of Kadavu Lailai with Captain Cook Cruises. Swim in crystal-clear waters, enjoy vibrant snorkelling, glass-bottom reef tours, and water activities. Relax over a tropical BBQ lunch and guided by marine biologists, learn about reef conservation on this unforgettable island escape.

Includes:

- Guided snorkelling, kayaking and stand-up paddle boarding • Cultural entertainment • Lounges and beanbags • Nature walks • Marine Biologists
- Kids club • Morning & afternoon tea • Beer, wine and soft drinks • Barbecue lunch • Return transfers from select Nadi and Denarau accommodation

Duration: 7 hours

Departs: Daily from Port Denarau at 10am

Transfers also available from Coral Coast, Vuda, Momi Bay, Lautoka and Sonaisali accommodation.

	Adult	Child 3-15 yrs
Full Day Tour	\$191*	\$120*

SUNSET DINNER CRUISE

Join Captain Cook Cruises to sail around the stunning bay on Fiji One into a beautiful Pacific Island sunset. Enjoy a delicious barbecue dinner of fish, steak and chicken served with salads, followed by dessert. Fijian cultural entertainment and spectacular scenery round off a perfect evening on the water.

Includes:

- Fijian cultural entertainment
- Welcome drink
- Tropical buffet dinner
- Return transfers from Nadi and Denarau accommodation

Duration: 3 hours

Departs: From Port Denarau, Tue to Sun at 5pm (May – Sep), Tue to Sun at 5:30pm (Oct – Apr)

	Adult	Child 3-15 yrs
Dinner Cruise	\$134*	\$78*



SOUTH SEA SAILING

Sail around the idyllic Mamanuca Islands on a unique sailing catamaran and visit uninhabited sand cays and untouched coral reefs abundant with marine life. Each journey offers a unique sailing experience dependent on the warm tropical breezes and sea conditions.

Includes:

- Welcome mimosa or sparkling wine
- Morning tea
- Gourmet buffet lunch with beer and wine (for 2 hours)
- Unlimited non-alcoholic beverages
- Use of snorkelling equipment
- Return coach transfers from Nadi, Denarau, Vuda and Coral Coast accommodation

Duration: 7 hours

Departs: Daily from Port Denarau at 9:45am, Coral Coast from 7:10am

Children under 8 yrs not permitted on cruise. Evening Sunset Cruise also available.

	Adult	Child 8-15 yrs
Full Day Tour	\$190*	\$95*



SOUTH SEA ISLAND DAY TRIP

Discover Fiji's most popular day trip destination. Explore the crystal-clear waters teeming with magnificent coral and fish life surrounding this pretty island, just 30 minutes from Port Denarau.

Includes:

- Full day on South Sea Island
- Barbecue lunch
- Beer, wine and soft drinks on the island
- Use of non-motorised watersports
- Return launch transfers
- Return transfers from selected Nadi, Denarau, Vuda and Coral Coast accommodation

Duration: 7 – 8 hours

Departs: Daily from Port Denarau at 10am, Coral Coast accommodation from 7:25am

Half day, Finding Nemo and Combo cruise prices also available.

	Adult	Child 5-15 yrs
Full Day Tour	\$187*	\$98*



MALAMALA BEACH CLUB

Malamala Beach Club boasts white sand beaches, 2 resort-style infinity edge pools and views across the stunning Mamanuca Islands. Only 25 minutes from Port Denarau by high-speed catamaran, guests are invited to sit back and relax in the club-like atmosphere.

Includes:

- Free use of towels (one per person)
- Free Wi-Fi
- Return vessel transfers from Port Denarau
- Return coach transfers from Nadi, Denarau, Vuda and Coral Coast accommodation

Duration: 6 – 7 hours

Departs: Daily from Port Denarau at 9:30am, Coral Coast from 10am

Returnee and Cabana prices also available.

	Adult/Child
Day Pass	\$137*
Day Pass with Poolside Day Bed	\$198*

*FROM PRICES ARE A GUIDE ONLY, subject to change and availability and are in Australian Dollars. Prices are per person, unless otherwise specified and based on travel in low season. For full terms and conditions, refer to the Booking Conditions on the inside back cover of this brochure.

NADI & SURROUNDS

Nadi is the gateway to the spectacular island and coastal regions of Fiji. Visit local shops and markets or Fiji's second largest city, Lautoka.

SEE

- Visit the Sri Siva Subramaniya Temple in Nadi Town
- See the impressive orchid collection at the Garden of the Sleeping Giant

DO

- Browse the local markets, including the Nadi Produce and Handicraft Markets
- Indulge in a therapeutic thermal mud spa at the Sabeto Thermal Mud Pool and Hot Springs

EAT & DRINK

- Sample Indo-Fijian food at one of Nadi's curry houses

WHAT'S ON

Bula Festival

July or August (dates to be confirmed)

Sugar Festival, Lautoka

September (dates to be confirmed)

Fiji Day

10 October



Sri Siva Subramaniya Temple



Nadi Markets

REF.	HOTELS	PAGE
1	Crowne Plaza Fiji Nadi Bay Resort & Spa	19
2	Fiji Gateway Hotel	18
3	Tanoa International Hotel	18

FIJI GATEWAY HOTEL



Queens Road, Nadi Airport
MAP PAGE 18

From **\$264***

- ❖ Recently refurbished, iconic hotel located opposite the airport
- ❖ Two pools and a tennis court with free use of racquets and balls
- ❖ Palm Court Restaurant open for breakfast, lunch and dinner

Location: Situated opposite Nadi International Airport and eight kilometres from Nadi Town. Distances: Beach 8km, Nadi Airport 500m.

Getting There: Free return transfers from Nadi Airport.

Property Features: Free Wi-Fi (common areas), Pools (2), Spa, Restaurant, Café, Bar, 24 hour room service, Gym, Tennis court, Waterslide, Resort shop, Parking (free), 95 rooms.

Room Features: Wi-Fi (extra charge), Air-conditioning, Tea/coffee making facilities, In-room movies (free), Cable TV, Hair dryer.

Max Capacity: Deluxe/Pool View – 3, Deluxe Family – 5, Suite – 2.

TANO INTERNATIONAL HOTEL



Votualevu Road, Nadi Airport
MAP PAGE 18

From **\$345***

- ❖ Five dining options including a specialty Japanese restaurant
- ❖ Fresh restaurant offers pizza, tandoor and grill by the pool
- ❖ Nightly entertainment in the Bula Bar

Includes full breakfast daily.

Location: Located three minutes from Nadi International Airport and a 15 minute drive to Nadi's main shopping centre. Distances: Beach 9km, Nadi Airport 3km.

Getting There: Free return transfers from Nadi Airport.

Property Features: Pool, Restaurants (3), Bar, Day spa, Gym, Resort shop, Laundry facilities, 24 hour reception, 24 hour room service, Parking (free), 149 rooms.

Room Features: Air-conditioning, Balcony or patio, Tea/coffee making facilities, Ironing facilities, Hair dryer, Safe.

Max Capacity: Superior/Family – 3 adults or 2 adults/2 children, Executive – 2.



FREE

* FROM PRICES ARE A GUIDE ONLY, subject to change and availability and are in Australian Dollars. Prices are per room per night for 2 people, unless otherwise specified and based on the lowest room category for travel in low season. For full terms and conditions, refer to the Booking Conditions on the inside back cover of this brochure.

CROWNE PLAZA FIJI NADI BAY RESORT & SPA



Wailoaloa Beach, Nadi Bay
MAP PAGE 18

From **\$441***

- ❖ Premium beachfront resort located on picturesque Wailoaloa Beach
- ❖ Space for both work and play
- ❖ Versatile dining designed for families, groups and romantic moments
- ❖ Immersive Fijian cultural experiences and activities
- ❖ Junior Suites with direct pool access
- ❖ 10 food & beverage outlets, including Urban Sugar Beach Club

Includes full breakfast daily.

Location: Wailoaloa beachfront location, approximately a 15 minute drive from Nadi Airport and Denarau Island. Distances: Beachfront, Nadi Airport 9km.

Getting There: We recommend airport transfers be booked in conjunction with your accommodation. See page 12 for further details.

Property Features: Pools (7 – including kids with water slide), Restaurants (4), Bars (3 – including swim-up), Café, Day spa, Gym, Beach club, Kids and Teens club (free), Retail outlets, Use of non-motorised watersports (free), 324 rooms.

Room Features: Air-conditioning, Balcony or patio, Tea/coffee making facilities, TV, Hair dryer, Safe.

Max Capacity: Standard King – 3. Other room types also available.



*FROM PRICES ARE A GUIDE ONLY, subject to change and availability and are in Australian Dollars. Prices are per room per night for 2 people, unless otherwise specified and based on the lowest room category for travel in low season. For full terms and conditions, refer to the Booking Conditions on the inside back cover of this brochure.



Sofitel Fiji Resort & Spa

DENARAU ISLAND

A short drive from Nadi, Denarau Island is easily accessible by a causeway separating the island from Viti Levu. Cruise ships sail into the picturesque harbour while tall ships whisk guests away to the nearby Mamanuca and Yasawa Islands for swimming and snorkelling.

SEE

- See colourful coral and tropical fish in the cool blue waters on a day tour to South Sea Island or Castaway Island
- Watch the vivid colours of a Fiji sunset from Denarau Beach

DO

- Play a round of golf at Denarau Golf and Racquet Club
- Beat the heat and enjoy the thrills of the giant waterslides at Big Bula Waterpark

EAT & DRINK

- Head to Port Denarau institution, Cardo's Steakhouse and wind down in the evening with cold drinks, delicious steak and seafood

WHAT'S ON

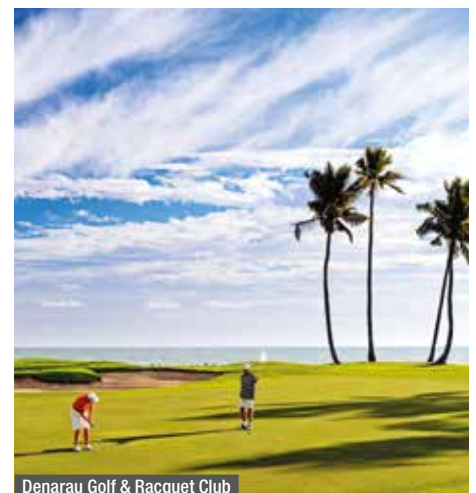
Ocean Swim Fiji

17 to 22 May



Bula Bus

REF.	HOTELS	PAGE
1	Radisson Blu Resort Fiji Denarau Island	21
2	Sheraton Fiji Golf & Beach Resort	22
2	Sheraton Fiji Denarau Villas	23
3	Sofitel Fiji Resort & Spa	24



Denarau Golf & Racquet Club

RADISSON BLU RESORT FIJI DENARAU ISLAND



Chantara Restaurant

Denarau Island
MAP PAGE 20

From **\$760***

- ❖ Beachfront resort with a private beach and a Waterfall Lawn
- ❖ Four lagoon pools with dedicated adults only pool and kids pool with slide
- ❖ Plenty of non-motorised watersports available for hire
- ❖ Great resort for families with a kids club and suites with cooking facilities
- ❖ Wide range of dining options – 5 restaurants and 2 specialty dining experiences

Includes full breakfast daily.

Location: On Fiji's largest resort island and boasting upscale beachfront accommodation just 25 minutes from Nadi International Airport. Distances: Beachfront, Nadi Airport 16km.

Getting There: We recommend airport transfers be booked in conjunction with your accommodation. See page 12 for further details.

Property Features: Pools (4 – including adults only), Restaurants (5), Bars (3 – 1 swim-up), 24 hour room service, Harmony Retreat Spa (day spa), Kids club 4-12 years (extra charge), Nanny service 0-12 years (extra charge), 270 rooms.

Room Features: Air-conditioning, Fan, Balcony or courtyard, Limited cooking facilities with microwave and dishwasher (1 and 2 Bedroom Suites), Cable TV, In-room movies, Ironing facilities, Washer/dryer (1 and 2 Bedroom Suites), Hair dryer, Safe.

Max Capacity: Standard Garden View/Superior Lagoon View – 2 adults/1 child, Deluxe Courtyard Twin – 2 adults/2 children, 1 Bedroom Garden View Suite/1 Bedroom Lagoon View Suite – 2 adults or 2 adults/3 children, 2 Bedroom Garden View Suite/2 Bedroom Lagoon View Suite – 6 adults or 4 adults/3 children. Other room types also available.



Standard Garden View



*FROM PRICES ARE A GUIDE ONLY, subject to change and availability and are in Australian Dollars. Prices are per room per night for 2 people, unless otherwise specified and based on the lowest room category for travel in low season. For full terms and conditions, refer to the Booking Conditions on the inside back cover of this brochure.

DENARAU ISLAND ACCOMMODATION

SHERATON FIJI GOLF & BEACH RESORT



Flying Fish Restaurant



Denarau Island
MAP PAGE 20

From **\$471***

- ❖ Stylish beachfront resort with Ocean View rooms and lagoon style pools
- ❖ Expansive tropical grounds with direct beach access
- ❖ Tee off at the nearby championship caliber golf course
- ❖ Wide choice of dining options with both local and international flavours
- ❖ Kids club and cultural activities to entertain the whole family

Location: Set on the waterfront of Denarau Island, just 20 minutes from Nadi Airport. Distances: Beachfront, Nadi Airport 15km.

Getting There: We recommend airport transfers be booked in conjunction with your accommodation. See page 12 for further details.

Property Features: Golf course (18 hole), Pools (2 – including adults only and family zones), Restaurants (4), Kids club 4-12 years (extra charge), Day spa, Gym, 300 rooms.

Room Features: Air-conditioning, Mini bar, Tea/coffee making facilities, Bathrobes.

Max Capacity: Garden View/Ocean View/Ocean Front/Ocean Front Studio – 3.



Garden View



*FROM PRICES ARE A GUIDE ONLY, subject to change and availability and are in Australian Dollars. Prices are per room per night for 2 people, unless otherwise specified and based on the lowest room category for travel in low season. For full terms and conditions, refer to the Booking Conditions on the inside back cover of this brochure.

SHERATON DENARAU VILLAS



Wet Edge Restaurant



Denarau Island
MAP PAGE 20

From **\$1297***

- ❖ Spacious beachfront villas with full kitchens and private balconies
- ❖ Relax by the pool, tee off for a round of golf or indulge at the spa
- ❖ Access to multiple dining venues and pools at the neighbouring Sheraton Fiji Golf & Beach Resort
- ❖ Perfect for families and groups
- ❖ Entertainment for all ages with cultural activities and kids club

Location: Beachfront resort adjacent to the Denarau Golf & Racquet Club. Distances: Beachfront, Nadi Airport 14km.

Getting There: We recommend airport transfers be booked in conjunction with your accommodation. See page 12 for further details.

Property Features: Golf course (18 hole), Pools (2), Restaurant, Bars (2), 24 hour room service, Kids club 4-12 years (extra charge), Parking (free), 297 rooms.

Room Features: Air-conditioning, Balcony, Tea/coffee making facilities, Kitchen with microwave and dishwasher, Refrigerator, Laundry facilities, Safe.

Max Capacity: 2 Bedroom Garden View/2 Bedroom Pool View/2 Bedroom Oceanfront – 5. Other room types also available.



2 Bedroom Garden View



*FROM PRICES ARE A GUIDE ONLY, subject to change and availability and are in Australian Dollars. Prices are per room per night for 2 people, unless otherwise specified and based on the lowest room category for travel in low season. For full terms and conditions, refer to the Booking Conditions on the inside back cover of this brochure.

DENARAU ISLAND ACCOMMODATION

SOFITEL FIJI RESORT & SPA



KOKO Restaurant



Niu Beach Club – Kids Club

Denarau Island
MAP PAGE 20

From **\$660***

- ❖ Beachfront location with lagoon style swimming pool
- ❖ Family friendly facilities including kids club with zipline and splash park
- ❖ Five restaurants including the signature beachfront restaurant, Solis
- ❖ Home to Denarau's late night venue – Republik Night Club
- ❖ Waitui Beach Club – an adults only sanctuary located within the resort

Includes full breakfast daily.

Location: On Denarau Island, just 20 minutes' drive from Nadi International Airport. Distances: Beachfront, Nadi Airport 15km.

Getting There: We recommend airport transfers be booked in conjunction with your accommodation. See page 12 for further details.

Property Features: Pools (3 – 1 lagoon, 1 children's, 1 adults only), Spa, Restaurants (5), Bars (4), Kids Beach Club 3-12 years (extra charge), Teen Zone 8-16 years (free), Fitness centre, Sofitel Spa, Sofitel Salon, Use of non-motorised watersports (free), 24 hour reception, Resort shops (5), 295 rooms.

Room Features: Air-conditioning, Balcony or patio, Mini bar, Tea/coffee making facilities, Cable TV, TV with casting capability, Bathrobes.

Max Capacity: Luxury King/Luxury Waitui King/Luxury Waitui King Plus/Prestige Suite/Imperial Suite/Opera Suite – 2, Superior King/Superior Twin – 3, Family Suite/Room – 2 adults/2 children. Other room types also available.



Superior King

FLYING WITH FIJI AIRWAYS?

Check-in for your Fiji Airways flight from the comfort of the resort. Boarding passes are issued, bags tagged and transported securely to the airport, giving you more time to enjoy the resort before you leave for the airport. At the airport, bypass check-in and head straight to security and immigration.



* FROM PRICES ARE A GUIDE ONLY, subject to change and availability and are in Australian Dollars. Prices are per room per night for 2 people, unless otherwise specified and based on the lowest room category for travel in low season. For full terms and conditions, refer to the Booking Conditions on the inside back cover of this brochure.



Nanuku Resort Fiji



CORAL COAST & PACIFIC HARBOUR

The Coral Coast located on the southern coast of Viti Levu is a firm favourite for couples and families. Here you will find palm-fringed beachfront resorts, stunning surf beaches and an array of outdoor activities to suit everyone. Surfing the reef breaks here is incredible and there are numerous other water activities to enjoy. Swim, snorkel or take to the open ocean for game fishing. Pacific Harbour – Fiji’s adventure capital – is the gateway to the spectacular Beqa lagoon. Framed by lush tropical mountains, the lagoon offers endless opportunities for exploration and adventure.

SEE

- Visit the Sigatoka Sand Dunes National Park, home to an extensive dune system and archaeological site dating back 3000 years
- See endangered native species like the peregrine falcon and crested iguana at Fiji’s only wildlife park, Kula Wild Adventure Park

DO

- Take a thrilling jetboat adventure to the heart of Fiji’s main island with a Sigatoka River Safari
- Visit the markets around the Sigatoka Valley for fresh fruit and vegetables, the area is known as ‘Fiji’s salad bowl’

WHAT’S ON

Uprising Festival of Music, Dance & Lights
October/November (dates to be confirmed)

REF.	HOTELS	PAGE
1	Fiji Marriott Resort Momi Bay	28
2	Intercontinental Fiji Golf Resort & Spa	28
3	Likuri Island Resort	26
4	Nanuku Resort Fiji	29
5	Outrigger Fiji Beach Resort	29
6	The Pearl Resort & Spa, Fiji	27
7	Shangri-La Yanuca Island, Fiji	27
8	Tambua Sands Resort, Fiji	26
9	Warwick Fiji	28



Outrigger Fiji Beach Resort



Upper Navua River Canyon

CORAL COAST & PACIFIC HARBOUR ACCOMMODATION

LIKURI ISLAND FIJI



Beachfront Bure

Likuri Island, Fiji
MAP PAGE 25

From **\$238****^

- ❖ Traditional Island style Fiji bungalow accommodation
- ❖ Family friendly resort
- ❖ Experience the captivating "Legends of the Pacific" performance

Location: Located beachfront on Likuri Island. Distances: Beachfront, Nadi Airport 48km.

Getting There: We recommend transfers to be booked in conjunction with your accommodation. See page 12 to 13 for further details.

Property Features: Pool, Restaurant, Bar, Day spa, Parking (free), Use of snorkelling equipment and non-motorised watersports equipment (free), Daily activities program (free), 23 rooms.

Room Features: Air-conditioning (Beachfront Bure), Balcony, Tea/coffee making facilities, Refrigerator (Beachfront Bures & Likuri Beach house).

Max Capacity: Beachfront Bure – 4 adults or 2 adults/2 children, Island Bure – 2. Other room types also available.

^ **Compulsory meal plan of FJD129 per adult and FJD64.50 per child, per day applies and is payable direct upon arrival.**



TAMBUA SANDS RESORT FIJI



Garden Bure

Queens Road, Sigatoka, Coral Coast
MAP PAGE 25

From **\$294***

- ❖ Boutique, adults only tranquility
- ❖ Private beachfront access and unique accommodation
- ❖ Authentic Fijian experience

Includes light breakfast daily.

Location: Set on a private beach, with Sigatoka River and a 9 hole golf course close by. Distances: Beachfront, Nadi Airport 88km.

Getting There: We recommend transfers to be booked in conjunction with your accommodation. See page 12 for further details.

Property Features: Pool, Restaurant, Room service, Laundry facilities, Non smoking, Parking (free), 25 rooms.

Room Features: Air-conditioning, Tea/coffee making facilities, Refrigerator, Safe.

Max Capacity: Garden Bure/Standard Beachfront Bure/Deluxe Beachfront Bure – 3, Beachfront Plunge Pool Bure – 2.



* **FROM PRICES ARE A GUIDE ONLY**, subject to change and availability and are in Australian Dollars. Prices are per room per night for 2 people, unless otherwise specified and based on the lowest room category for travel in low season. For full terms and conditions, refer to the Booking Conditions on the inside back cover of this brochure.

SHANGRI-LA YANUCA ISLAND, FIJI



Ocean Deluxe King

Yanuca Island
MAP PAGE 25

From **\$422***

- ❖ Great for families with an inflatable water park, kids club and pool
- ❖ Nine hole golf course designed by Peter Thompson
- ❖ Choose from five restaurants and three bars

Includes full breakfast daily.

Location: On Yanuca Island. The island is linked by a causeway to the mainland. Distances: Beachfront, Nadi Airport 60km.

Getting There: We recommend airport transfers be booked in conjunction with your accommodation. See pages 12 to 13 for further details.

Property Features: Chapel, Golf course (9 hole), Pools (3), Restaurants (5), Bars (3), 24 hour room service, Kids club 4-11 years (free), Day spa, Use of non-motorised watersports (free), Tennis courts (2), Gym, Mini golf, Resort shop, Guest laundry, 443 rooms.

Room Features: Air-conditioning, Balcony or patio, Tea/coffee making facilities, Cable TV, Ironing facilities, Hair dryer, Bathrobes and slippers.

Max Capacity: Ocean Deluxe King/Ocean Deluxe Twin – 2 adults or 2 adults/2 children. Other room types also available.



THE PEARL RESORT & SPA, FIJI



Premium Garden View

Queens Highway, Pacific Harbour
MAP PAGE 25

From **\$398***

- ❖ Play a round of golf at The Pearl Golf & Country Club
- ❖ Spoil for choice with five restaurants and a swim-up pool bar
- ❖ All rooms feature a balcony with garden or water views

Includes full breakfast daily.

Location: Set on the beach in the heart of Fiji's adventure capital of Pacific Harbour. Distances: Beachfront, Nadi Airport 150km.

Getting There: We recommend airport transfers be booked in conjunction with your accommodation. See page 12 for further details.

Property Features: Golf course (18 hole), Pool, Restaurants (4), Bar, 24 hour reception, Day spa, Steam room, Gym, Laundry, Parking (free), Non smoking, Use of non-motorised watersports (free), Daily activities program (free), 210 rooms.

Room Features: Air-conditioning, Balcony, Tea/coffee making facilities, Mini bar (Penthouse suites), Refrigerator, Cable TV, In-room movies (free), Hair dryer, Ironing facilities.

Max Capacity: Premium Garden View/Premium Marina View/Premium Ocean View – 2. Other room types also available.



*FROM PRICES ARE A GUIDE ONLY, subject to change and availability and are in Australian Dollars. Prices are per room per night for 2 people, unless otherwise specified and based on the lowest room category for travel in low season. For full terms and conditions, refer to the Booking Conditions on the inside back cover of this brochure.

CORAL COAST & PACIFIC HARBOUR ACCOMMODATION

WARWICK FIJI



Garden View

Queens Road, Korolevu
MAP PAGE 25

From **\$629***

- ❖ Perfect for families with complimentary kid's club and daily activities
- ❖ Take part in the Coral Viewing/Glass Bottom Boat Trip (weather permitting)
- ❖ Indulge at Warwick Spa, overlooking the stunning lagoon

Includes full buffet breakfast daily.

Location: On absolute beachfront along the Coral Coast, midway between Nadi Airport and the capital city of Suva. Distances: Beachfront, Nadi Airport 102km.

Getting There: We recommend airport transfers be booked in conjunction with your accommodation. See page 12 for further details.

Property Features: Pools (2), Restaurants (6), Bars (6), Room service, Kids club 3-12 years (free), Warwick Spa (day spa), Gym, Tennis courts (4), Squash courts (2), Hair salon, 24 hour reception, Non smoking, Parking (free), 247 rooms.

Room Features: Air-conditioning, Balcony, Tea/coffee making facilities, Cable TV, Ironing facilities, Hair dryer, Safe.

Max Capacity: Garden View/Ocean View – 3 adults or 2 adults/2 children, Superior Garden View – 2 adults/3 children, Warwick Club – 2, Suite – 2 adults/2 children.



INTERCONTINENTAL FIJI GOLF RESORT & SPA



Club InterContinental



Garden

Natadola Bay, Natadola
MAP PAGE 25

From **\$620***

- ❖ Play a round of golf on the 18 hole championship course
- ❖ Free use of non-motorised watersports for one hour per person per day
- ❖ Opt for a Club suite to enjoy the added benefits of Club InterContinental

Includes full breakfast daily.

Location: Located in Natadola Bay. Distances: Beachfront, Nadi Airport 53.9km.

Getting There: We recommend airport transfers be booked in conjunction with your accommodation. See page 12 for further details.

Property Features: Golf course (18 hole), Pools (3), Restaurants (3), Bars (4), 24 hour room service, Nightly entertainment, Kids club 4-12 years (extra charge), Nanny service (extra charge), Day spa, Gym, Laundry/dry cleaning service, 24 hour reception, 266 rooms.

Room Features: Air-conditioning, Balcony/Terrace, Mini bar, Tea/coffee making facilities, Smart TV, Ironing facilities, Outdoor Cleopatra bath.

Max Capacity: Garden View/Lagoon View/Pool View/Beachfront/Beachfront Suite/ Garden View Double – 3 adults or 2 adults/2 children. Other room types also available.



FIJI MARRIOTT RESORT MOMI BAY



Lagoon View Guest Room

Natadola Bay, Natadola
MAP PAGE 25

From **\$664***

- ❖ Adults only Over Water Bures
- ❖ Family friendly resort with kid's pool, calm sandy lagoon and family rooms
- ❖ Enjoy a fusion of Fijian and Indian cuisine at Goji Kitchen & Bar

Includes full breakfast daily.

Location: On Momi Bay, near Nadi on the western coast of Viti Levu. The resort is a 45 minute drive from Nadi International Airport. Distances: Beachfront, Nadi Airport 33km.

Getting There: We recommend airport transfers be booked in conjunction with your accommodation. See page 12 for further details.

Property Features: Pools (4 – including adults only and children's), Spa, Restaurants (5), Café, 24 hour room service, Kids club 4-12 years (free), Day spa, Gym, 250 rooms.

Room Features: Air-conditioning, Balcony, Tea/coffee making facilities.

Max Capacity: Lagoon View Guest Room/Lagoon Front Guest Room – 2, Duplex Lagoon Bure – 3. Other room types also available.



* FROM PRICES ARE A GUIDE ONLY, subject to change and availability and are in Australian Dollars. Prices are per room per night for 2 people, unless otherwise specified and based on the lowest room category for travel in low season. For full terms and conditions, refer to the Booking Conditions on the inside back cover of this brochure.

NANUKU RESORT FIJI



Nanuku Suite



2 Bedroom Garden Villa

11 Nanuku Dr, Pacific Harbour Fiji
MAP PAGE 25

From **\$869***

- ❖ Luxury boutique accommodation overlooking Beqa Lagoon
- ❖ Immerse in the culture of Fiji with Warrior Cooking and Kava Ceremonies
- ❖ Situated in Pacific Harbour, Fiji's adventure capital

Includes full breakfast daily.

Location: Beachfront near Pacific Harbour. Distances: Nadi Airport 143km.

Getting There: We recommend airport transfers be booked in conjunction with your accommodation. See page 12 for further details.

Property Features: Pool, Spa, Restaurant, Bars (2), Kids club infants-14 years (free), Nanny service 0-8 years (free), Day spa, Games room, Gym, Use of snorkelling equipment, non-motorised watersports and bicycles (free), 37 rooms.

Room Features: Air-conditioning, Private pool (except Nanuku Suites), Balcony, Tea/coffee making, Kitchen (Residences), Mini fridge, Ironing facilities, In-room movies (free), Hair dryer, Safe.

Max Capacity: Nanuku suite – 3 adults or 2 adults/2 children, 2 Bedroom Garden Villa – 4 adults or 2 adults/2 children. Other room types also available.



FREE



OUTRIGGER FIJI BEACH RESORT



Resort View

Queens Highway, Sigatoka
MAP PAGE 25

From **\$500***

- ❖ Family friendly with kid's club, teen activity program and MeiMei nanny child minding service
- ❖ Fijian cultural activities, entertainment and non-motorised watersports

Includes welcome drink and cool towel on arrival.

Location: On the Coral Coast. Distances: Beachfront, Nadi Airport 80km.

Getting There: We recommend airport transfers be booked in conjunction with your accommodation. See page 12 for further details.

Property Features: Pools (2), Restaurants (5), Bars (5) Café, 24 hour room service, Kids club 3-12 years (free), Nanny service (extra charge), Day spa, Gym, Use of snorkelling equipment and non motorised watersports (free), Tennis courts (2), Yoga and meditation (free), Adventure Park, 24 hour reception, Guest lounge, 253 rooms.

Room Features: Air-conditioning, Ocean Views (Beachfront Bure's), Fan, Balcony, Mini bar, Refrigerator, LCD TV with casting services, Bathrobes.

Max Capacity: Resort View/Beachfront Bure – 3 adults or 2 adults/2 children. Other room types also available.



FREE



*FROM PRICES ARE A GUIDE ONLY, subject to change and availability and are in Australian Dollars. Prices are per room per night for 2 people, unless otherwise specified and based on the lowest room category for travel in low season. For full terms and conditions, refer to the Booking Conditions on the inside back cover of this brochure.



Castaway Island

MAMANUCA & YASAWA ISLANDS

The Mamanuca and Yasawa Islands are among the most idyllic destinations in Fiji. Explore the reef-fringed beaches and uncover well established island resorts, coral cays and uninhabited volcanic atolls perfect for a romantic picnic. The white sands and quintessential swaying palm trees are the main attractions of the islands, where diving and snorkelling are a must for water lovers.

SEE

- Take in spectacular 360 degree island and water views from the lookout on Vomo Island
- Visit the majestic Sawa-I-Lau limestone caves, considered the heart of the Yasawas

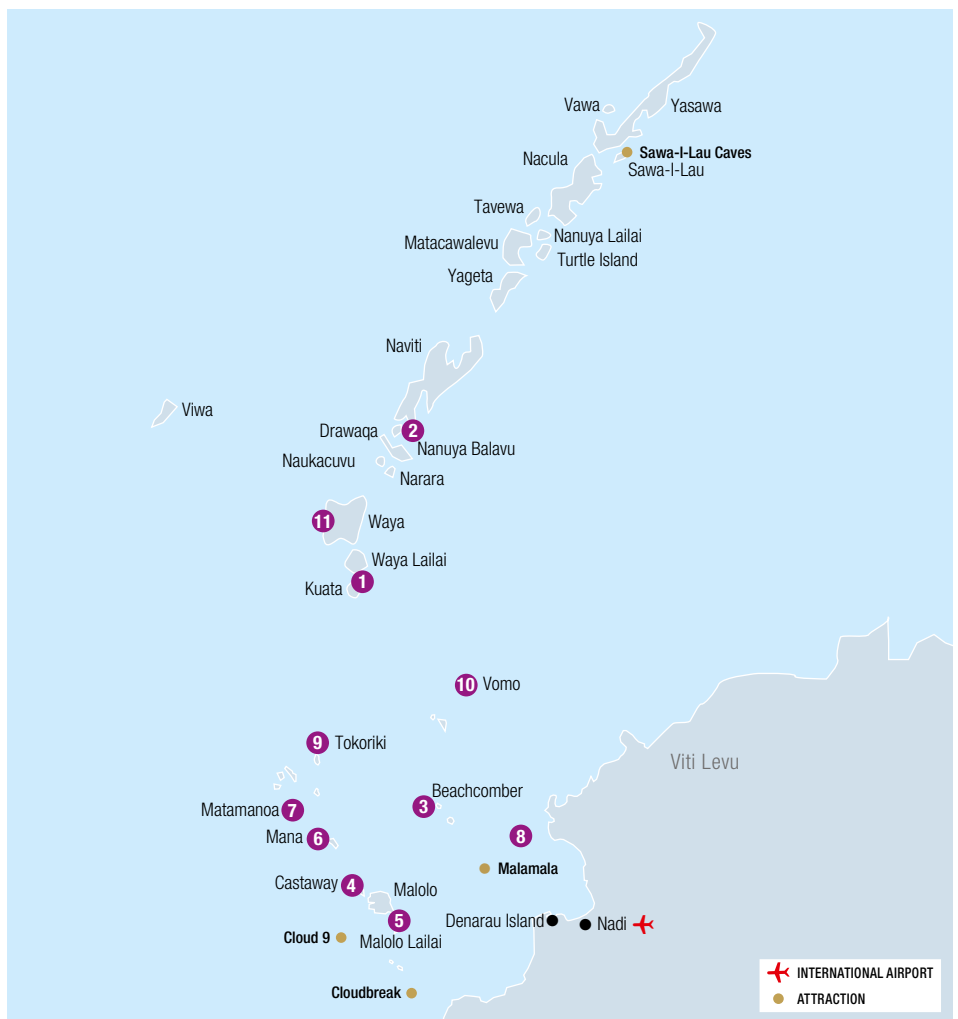
DO

- Surfers should not miss surfing at Cloudbreak, known to have some of the best surf breaks in the world
- Swimming with the giant manta rays from May to October each year as they glide through the Yasawa Islands crystal waters is an unmissable experience
- Learn to cook Fijian cuisine in a cooking class at one of the island resorts

WHAT'S ON

Fiji Regatta Week

September (dates to be confirmed)



REF.	HOTELS	PAGE	REF.	HOTELS	PAGE
1	Barefoot Kuata Island	31	7	Matamanoa Island Resort	32
2	Barefoot Manta Island	31	5	Plantation Island Resort	33
3	Beachcomber Island Resort	32	8	Serenity Island Resort	31
4	Castaway Island Fiji	34	9	Tokoriki Island Resort	36
5	Lomani Island Resort	35	10	Vomo Island	37
6	Mana Island Resort & Spa	32	11	Waya Island Resort	35

MAMANUCA & YASAWA ISLANDS ACCOMMODATION

BAREFOOT KUATA ISLAND



Kuata Island, Yasawa Islands Fiji
MAP PAGE 30

From **\$599***[^]

- ❖ Beachfront location with an authentic Fiji Island vibe
- ❖ Low and high tide swimming and snorkelling off the beach, tracks to lookouts
- ❖ Daily marine conservation presentations conducted by marine biologists

[^]Resort charge includes 3 meals per day, Wi-Fi in common areas, guided snorkeling, use of non-motorised watersports and daily scheduled activities.

Location: Set on Kuata Island in the Yasawa Islands. Distance: Beachfront.

Getting There: From Nadi by coach/launch via Port Denarau. See pages 12 to 13 for details.

Property Features: Pools (2), Restaurant, Bar, Child minding available (extra charge), 25 rooms.

Room Features: Balcony, Fan.

Max Capacity: Beachfront Rai Ki Waya Bure – 2 adults or 2 adults/2 children, Beachfront Levu Bure – 2 adults or 2 adults/3 children, Tei Tei Bure – 3 adults or 2 adults/3 children.

[^]Price includes FJD159 per person resort charge to be paid direct to the resort by you.

BAREFOOT MANTA ISLAND



Beachfront Adi Bure

Drawaqa Island, Yasawa Islands, Fiji
MAP PAGE 30

From **\$655***[^]

- ❖ Opportunity to snorkel with manta rays from May – October
- ❖ Three beaches to enjoy, offering low tide and high tide swimming and snorkelling
- ❖ Marine conservation centre holding daily presentations

[^]Resort charge includes 3 meals per day, Wi-Fi in common areas, guided snorkeling, use of non-motorised watersports and daily scheduled activities.

Location: Set on Drawaqa Island, Yasawa Islands, Fiji. Distance: Beachfront.

Getting There: From Nadi by coach/launch via Port Denarau. See pages 12 to 13 for details.

Property Features: Restaurant, Bar, Child minding available (extra charge), Evening entertainment, 26 rooms.

Room Features: Patio, Fan.

Max Capacity: Beachfront Adi Bure – 2, Beachfront Levu Bure – 3 adults or 2 adults/3 children Beachfront Yanuyanu Bure – 2 adults/2 children.

[^]Price includes FJD159 per person resort charge to be paid direct to the resort by you.

SERENITY ISLAND RESORT



Beachfront Bure

Serenity Island Resort, Kadavulaili, Mamanuca Islands, Fiji
MAP PAGE 30

From **\$396***

- ❖ Beachfront location with an outdoor pool
- ❖ Indulge at the Serenity Massage Bure
- ❖ Dine at the restaurant featuring daily menus and stunning Pacific Ocean views

Includes full breakfast and afternoon tea daily, and welcome drink on arrival.

Location: Set on Serenity Island in the Mamanuca Islands. Distance: Beachfront.

Getting There: From Nadi Airport by coach/launch via Port Denarau. See pages 12 to 13 for details.

Property Features: Pool, Restaurant, Bar, Day spa, Gym, Laundry service, Non-smoking, Use of non-motorised watersports (free), 33 rooms.

Room Features: Air-conditioning, Balcony or patio, Tea/coffee making facilities, Flat screen TV, Hair dryer, Safe.

Max Capacity: Beachfront/Palmview Bure – 2 adults, Beachfront Family Bure – 2 adults/2 children.

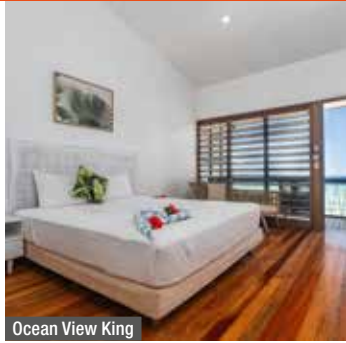


*FROM PRICES ARE A GUIDE ONLY, subject to change and availability and are in Australian Dollars. Prices are per room per night for 2 people, unless otherwise specified and based on the lowest room category for travel in low season. For full terms and conditions, refer to the Booking Conditions on the inside back cover of this brochure.



MAMANUCA & YASAWA ISLANDS ACCOMMODATION

BEACHCOMBER ISLAND RESORT



Ocean View King

Beachcomber Island
MAP PAGE 30

From **\$439***[^]

- ❖ Fiji's authentic island experience, the perfect place to relax and unwind
- ❖ Daily coral viewing, fish feeding and snorkelling trips plus turtle sanctuary
- ❖ Brand new resort pool with swim-up bar

Includes full breakfast daily.

Location: Set on a marine sanctuary in the heart of the Mamanuca Islands. Distances: Beachfront.

Getting There: From Nadi Airport by coach/launch via Port Denarau. See pages 12 to 13 for details.

Property Features: Pool, Restaurant, Bars (2 – 1 swim-up), Kiosk, Day spa, Laundry service, Scuba diving, Kayaks, Paddle boards and snorkelling equipment, 42 rooms.

Room Features: Air-conditioning, Fan, Patio, Refrigerator, Tea/coffee making facilities.

Max Capacity: Ocean View King – 2, Ocean View Twin/Beachfront Bure/Deluxe Standalone Oceanview – 3, Oceanview Family – 2 adults/3 children or 1 adult/4 children.

[^]Minimum 2 night stay applies.



FREE

MANA ISLAND RESORT & SPA – FIJI



Island Bure

Mana Island
MAP PAGE 30

From **\$685***

- ❖ Two freshwater pools – an infinity edge and an adults only pool
- ❖ Family friendly resort with a kid's club and nanny service
- ❖ Promotes sustainability through turtle conservation and tree and coral planting

Location: A comfortable 90 minute trip from Port Denarau, the island is adorned with white sandy beaches and crystal blue rich coral waters. Distances: Beachfront.

Getting There: From Nadi Airport by coach/launch via Port Denarau or by helicopter. See pages 12 to 14 for further details.

Property Features: Wi-Fi (common areas – extra charge), Pools (2 – 1 family, 1 adults only infinity edge), Restaurants (5), Bars (4), Room service, Tennis courts, Kids club 3-12 years (extra charge), Nanny service (extra charge), Mana Spa (day spa), Gym, 160 rooms.

Room Features: Air-conditioning, Balcony or patio, Refrigerator, Safe.

Max Capacity: Island Bure – 3 adults or 2 adults/3 children, Ocean View Room – 3 adults or 2 adults/2 children, Deluxe Ocean View Bure – 4 adults or 2 adults/4 children, Beachfront Bure – 2. Other room types also available.

MATAMANOIA ISLAND RESORT



Beachfront Pool Bure

Matamanoia Island
MAP PAGE 30

From **\$511***[^]

- ❖ Secluded adults only resort
- ❖ Private plunge pools in the villas and bures
- ❖ Unique treetop spa

Includes full breakfast daily.

Location: Set in the Mamanuca Islands approximately 30 kilometres west of Nadi International Airport. Distances: Beachfront.

Getting There: From Nadi Airport by coach/launch via Port Denarau. See page 12 to 13 for further details.

Property Features: Pool, Restaurant, Bar, Day spa, Tennis court, Nightly entertainment, Boutique, Laundry service, 47 rooms.

Room Features: Private plunge pool (Bure and Villa), Outdoor shower (Bure and Villa), Ocean views, Air-conditioning, Fan, Patio, Tea/coffee making facilities, Mini bar (on request), Bathrobes, Hair dryer.

Max Capacity: Resort – 2, Beachfront Pool Bure/Oceanfront Pool Villa – 3.

[^]Minimum 3 night stay applies.



FREE



* FROM PRICES ARE A GUIDE ONLY, subject to change and availability and are in Australian Dollars. Prices are per room per night for 2 people, unless otherwise specified and based on the lowest room category for travel in low season. For full terms and conditions, refer to the Booking Conditions on the inside back cover of this brochure.

PLANTATION ISLAND RESORT



Coconut Kids Club



Malolo Lailai Island
MAP PAGE 30

From **\$645***

- ❖ Family friendly resort with a variety of accommodation options
- ❖ Kids will love the inflatable waterpark and Coconut Kids Club
- ❖ Four freshwater pools to enjoy
- ❖ Black Coral Grill offers fresh seafood and meat which can be cooked on a unique volcanic stone
- ❖ Coral conservation program available for guests offers coral planting, kids talks and fish house making

Includes welcome drink and shell lei on arrival.

Location: Absolute beachfront resort nestled on the island of Malolo Lailai, offering kilometres of white, sandy beach overlooking a sheltered lagoon. It is a 50 minute boat ride or 10 minute flight from Nadi. Distances: Beachfront.

Getting There: From Nadi Airport by coach/launch via Port Denarau or by helicopter or seaplane. See pages 12 to 14 for further details.

Property Features: Free Wi-Fi (common areas), Golf course (9 hole), Pools (4 – 1 lagoon, 1 waterslide), Restaurants (3), Bars (2), Inflatable water park (5-16 years), Kids club 4-12 years (free), Teens club 13-16 years (free), Nanny service (extra charge), Playgrounds (3), Day spa, Tennis court, Basketball court, Bicycle hire, Hammocks, Resort shop, Convenience store, Hair salon, Guest laundry, Use of non-motorised watersports (free), Fijian cultural activities, Coral conservation program (free), 194 rooms.

Room Features: Wi-Fi (extra charge), Air-conditioning, Fan, Balcony or patio, Tea/coffee making facilities, Refrigerator, Safe, All rooms non smoking.

Max Capacity: Garden/Poolside/Studio Garden Bure/Beachfront Bure – 4 adults/1 child, Beachfront Hotel – 4, 2 Bedroom Garden Bure – 6.



Beachfront Hotel Room

*FROM PRICES ARE A GUIDE ONLY, subject to change and availability and are in Australian Dollars. Prices are per room per night for 2 people, unless otherwise specified and based on the lowest room category for travel in low season. For full terms and conditions, refer to the Booking Conditions on the inside back cover of this brochure.

MAMANUCA & YASAWA ISLANDS ACCOMMODATION

CASTAWAY ISLAND, FIJI



Castaway Island, Fiji
MAP PAGE 30

From **\$911***

- ❖ Family friendly with a family pool, family rooms and kid's club
- ❖ Quiet zone pool with swim-up pool bar and jacuzzi
- ❖ Free guided island walk and guided sunset kayak trips
- ❖ Waterpark with obstacle course, slide, swing, trampoline and splash zone
- ❖ Start your day with a guided yoga session overlooking the ocean

Includes welcome drink on arrival and weekly management cocktail party.

Location: Set on a private island in the heart of Fiji's Mamanuca Islands, surrounded by white sand beaches and vibrant coral reefs. Distances: Beachfront.

Getting There: From Nadi Airport by coach/launch via Port Denarau or by helicopter. See pages 12 to 14 for further details.

Property Features: Free Wi-Fi (common areas), Pools (2), Restaurants (4), Bars (4), Kids club 3-12 years (free), Nanny service (extra charge), Massage facilities, Dive centre, Tennis court, Table tennis, Resort shop, Guest laundry, 24 hour reception, 65 rooms.

Room Features: Air-conditioning, Fan, Balcony/patio, Tea/coffee making facilities, Refrigerator, Bathrobes, Hair dryer, Safe.

Max Capacity: Island Bure/Ocean View Bure/North Beach Bure/South Beach Bure – 5, Grand Bure – 6, Family Beach Bure – 10.



Island Bure

* FROM PRICES ARE A GUIDE ONLY, subject to change and availability and are in Australian Dollars. Prices are per room per night for 2 people, unless otherwise specified and based on the lowest room category for travel in low season. For full terms and conditions, refer to the Booking Conditions on the inside back cover of this brochure.

MAMANUCA & YASAWA ISLANDS ACCOMMODATION

LOMANI ISLAND RESORT & SPA – FIJI



Malolo Lailai Island
MAP PAGE 30

From **\$952***

- ❖ Exclusive adults only boutique resort, perfect base for relaxation or adventure
- ❖ Join the free dolphin safari, daily guided snorkelling and village tours
- ❖ All rooms boast ocean views and beach access

Includes full breakfast daily, welcome drink and shell lei on arrival.

Location: On Malolo Lailai Island, in the Mamanuca Islands to the west of Fiji's main island Viti Levu. Distances: Beachfront.

Getting There: From Nadi Airport by coach/launch via Port Denarau or by helicopter or seaplane. See page 12 to 14 for further details.

Property Features: Pool (lagoon), Restaurant, Bar, Room service, The Spa, Gym, Use of snorkelling equipment and non-motorised watersports (free), 30 rooms.

Room Features: Private plunge pool (Beachfront Pool Bure), Ocean views, Air-conditioning, Balcony or patio, Refrigerator, Television, Bathrobes, Hair dryer.

Max Capacity: Deluxe Suite – 3, Beachfront Bure/Beachfront Pool Bure – 2.



Deluxe Suite



Beachfront Pool Bure

WAYA ISLAND RESORT



Deluxe Garden Bure

Waya Island, Yasawa Islands, Fiji
MAP PAGE 30

From **\$1000*^**

- ❖ Boutique adults only resort
- ❖ Beachfront location with lush tropical landscape
- ❖ Enjoy guided hill hikes with stunning views

Includes breakfast, lunch and dinner daily and a 15 minute foot ritual.

Location: Located on Waya Island in the Southern Yasawa Islands. The resort is only a 2 hour cruise from Port Denarau. Distances: Beachfront.

Getting There: We recommend transfers be booked in conjunction with your accommodation. See pages 12 to 13 for details.

Property Features: Pool, Restaurant, Bar, Day spa, Laundry service, 24 hour reception, Guest lounge, Use of snorkelling equipment and non-motorised watersports (free), 25 rooms.

Room Features: Air-conditioning, Fan, Balcony, Tea/coffee making facilities, Refrigerator, Ironing facilities, Beach towels, Bathrobes and slippers, Hair dryer, Safe.

Max Capacity: Deluxe Garden Bure – 2. Other room types also available.

^ Minimum 2 night stay applies.



*FROM PRICES ARE A GUIDE ONLY, subject to change and availability and are in Australian Dollars. Prices are per room per night for 2 people, unless otherwise specified and based on the lowest room category for travel in low season. For full terms and conditions, refer to the Booking Conditions on the inside back cover of this brochure.

MAMANUCA & YASAWA ISLANDS ACCOMMODATION

TOKORIKI ISLAND RESORT



Tokoriki Island
MAP PAGE 30

From **\$2222***[^]

- ❖ Boutique adults only resort
- ❖ Romantic beach holiday for couples and honeymooners
- ❖ Complimentary use of stand-up paddle boards, kayaks and Hobie cats
- ❖ Arrange an island beach picnic to the nearby Monu Island
- ❖ PADI Dive facility to discover the underwater life
- ❖ Cultural activities include village visits, local markets and kava ceremony

Includes welcome drink, cool towel and lei on arrival, afternoon tea daily and cocktail tasting and canapés every Tuesday, Thursday and Saturday.

Location: Set in the Mamanuca group of islands and easily accessed from Nadi. Enjoy a stunning 15 minute scenic helicopter flight from Nadi International Airport or a one hour speedboat from Port Denarau. Distances: Beachfront.

Getting There: From Nadi Airport by coach/launch via Port Denarau or by helicopter. See pages 12 to 14 for further details.

Property Features: Chapel, Pools (2), Restaurants (2), Bar, Day spa, Gym, Boutique, Tennis court, Exercise platform, Evening entertainment, Dive centre, Reading bure with books and board games, Use of snorkelling equipment and non-motorised activities (free), 36 bures and villas.

Room Features: Plunge pool (Beachfront Pool Bure, Beachfront Pool Villa, Pool Villa), Ocean views, Air-conditioning, Fan, Patio, Hammocks, Personalised mini bar (extra charge), Bathrobes, Hair dryer, Indoor and outdoor showers, Safe, All rooms non smoking.

Max Capacity: Beachfront Bure/Beachfront Pool Bure/Pool Villa – 3, Beachfront Pool Villa – 2.

[^] Minimum 2 night stay applies.



Beachfront Pool Villa



Beachfront Bure



* FROM PRICES ARE A GUIDE ONLY, subject to change and availability and are in Australian Dollars. Prices are per room per night for 2 people, unless otherwise specified and based on the lowest room category for travel in low season. For full terms and conditions, refer to the Booking Conditions on the inside back cover of this brochure.

VOMO ISLAND



Vomo Island
MAP PAGE 30

From **\$1977***^

- ❖ A private luxury island boutique resort set on 255 acres
- ❖ Adults only area with bar and infinity pool at the Vomo Rocks Pool
- ❖ Families will love the kids village and 4 hours of complimentary babysitting daily for children under 4
- ❖ Weekly beachfront cocktail party with Fijian meke and Kava ceremony
- ❖ Complimentary use of non-motorised water sports and activities

Includes breakfast, lunch, dinner daily, escorted snorkel safari daily and weekly manager's cocktail party.

Location: A private island escape situated in the Mamanuca Islands, at the cusp of the Yasawa Islands. Distances: Beachfront.

Getting There: From Nadi Airport by coach/launch via Port Denarau or by helicopter. See pages 12 to 14 for details. Transfers can also be arranged with Vomo direct.

Property Features: Golf course (9 hole), Pools (2), Restaurants (2), Bars (2), Kids club 3-12 years (free), Day spa, Use of non-motorised watersports (free), 40 rooms.

Room Features: Air-conditioning, Patio, Mini bar (free – excluding alcoholic beverages), Tea/coffee making facilities, Daily laundry service (free).

Max Capacity: Hillside Villa/Beachfront Villa/Beachfront Haven – 3, Beachfront Family Retreat Villa – 3 adults/1 child or 2 adults/3 children.

^ Minimum 2 night stay applies.



Hillside Villa

REGIONAL FIJI

Get off the beaten track and experience the real Fiji in regional areas on the mainland or the Northern Islands. On Vanua Levu, coconut plantations and lush rainforest beg to be explored, while Savusavu is a multicultural town set in beautiful surroundings. Rakiraki, located on the northern tip of the mainland, offers the perfect blend of white sandy beaches, endless sunshine and vibrant coral reefs, perfect for those seeking relaxation adventure.

SEE

- Chase waterfalls in Rakiraki at the iconic Nabalasere waterfall

DO

- Tour the J Hunter Pearl Farm in Savusavu Bay and purchase one of their renowned pearls
- Dive the reefs off Rakiraki and see turtles, colourful coral and reef sharks

EAT

- In Savusavu, learn about the art of chocolate making on the Kokomana Chocolate tour and enjoy a delicious chocolate tasting session

WHAT'S ON

Friendly North Festival

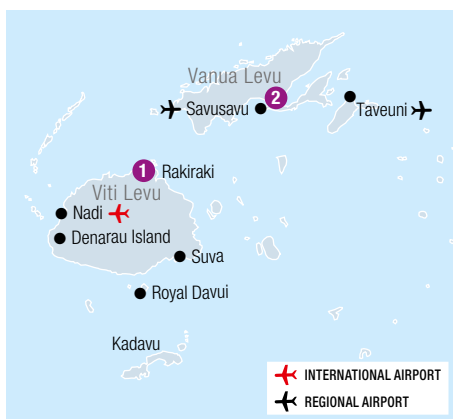
October (dates to be confirmed)

Savusavu Festival Week

November (dates to be confirmed)



Koro Sun Resort & Rainforest Spa, Savusavu



Savasi Island Resort

REF.	HOTELS	PAGE
1	Dolphin Island Resort	40
2	Jean-Michel Cousteau Resort	40
2	Koro Sun Resort & Rainforest spa, Savusavu	39
2	Savasi Island Resort, Savusavu	40
1	Volivoli Beach Resort, Rakiraki	38

VOLIVOLI BEACH RESORT, RAKIRAKI



Ocean View Room

Volivoli Road, Rakiraki, Viti Levu
MAP PAGE 38

From **\$674** ^{**}

- ❖ Boutique beachfront family-run resort
- ❖ Friendly Fijian hospitality
- ❖ Great for active guests with an exciting range of watersports

Includes welcome drink and resort orientation, breakfast and dinner daily.

Location: A relaxed beachfront resort, just a two and half hour scenic coastal drive from Nadi International Airport on the northern most point of Viti Levu. Distances: Beachfront, Nadi Airport 143km.

Getting There: We recommend airport transfers be booked in conjunction with your accommodation. See page 12 for further details.

Property Features: Wi-Fi (extra charge), Pool, Restaurant (2), Bars (3 – 1 swim-up), Day spa, Dive shop, Fishing charters, Boutique, Parking (free), Private beach, 33 rooms.

Room Features: Wi-Fi (extra charge), Ocean views, Air-conditioning, Fan, Balcony.

Max Capacity: Ocean View/Luxury Ocean Front Villa – 4, Deluxe Ocean View – 4 adults or 2 adults/2 children. Other room types also available.

^ Minimum 3 night stay applies.



Villa Room



*** FROM PRICES ARE A GUIDE ONLY**, subject to change and availability and are in Australian Dollars. Prices are per room per night for 2 people, unless otherwise specified and based on the lowest room category for travel in low season. For full terms and conditions, refer to the Booking Conditions on the inside back cover of this brochure.

KORO SUN RESORT & RAINFOREST SPA, SAVUSAVU



Hibiscus Highway, Savusavu, Vanua Levu
MAP PAGE 38

From **\$475***

- ❖ Indulgent Spa, hidden in the spectacular rainforest and beside a small waterfall
- ❖ Perfect for romance with Fiji's most affordable overwater accommodation
- ❖ Great for families with a kids pool, waterslide, kids club and nanny service
- ❖ Enjoy guided rainforest treks or handline fishing
- ❖ Immerse yourself in Fijian culture with meke dancing and lovo demonstrations
- ❖ Perfect for the adventurous traveller or young at heart

Includes tropical buffet breakfast with one hot dish from menu daily, afternoon tea daily, manager's cocktail party, fire dancing show, Fijian Meke and cooking classes.

Location: Set on a 160 acre rainforest sanctuary on the island of Vanua Levu with beautiful lush tropical surroundings. Distances: Waterfront, Savusavu Airport 12km.

Getting There: From Nadi Airport by plane then vehicle transfers from Savusavu Airport or Labasa Airport. Transfers are included. Ask your travel agent for details.

Property Features: Golf course (9 hole), Pools (2), Spa, Restaurants (3), Bars (4), Day spa, Kids club 4-12 years (free), Use of non-motorised watersports (free), Nanny service (free), 56 rooms.

Room Features: Air-conditioning, Fan, Patio, Tea/coffee making facilities, Ironing facilities, Hair dryer, Safe.

Max Capacity: Tropical Bure/Garden Bure/Edgewater Bure/Edgewater Floating Bure – 2, Edgewater Pool Bure – 3, 2 Bedroom Pool Bure/Edgewater Villa – 4. Other room types also available.



Garden Bure



Garden Bure



*FROM PRICES ARE A GUIDE ONLY, subject to change and availability and are in Australian Dollars. Prices are per room per night for 2 people, unless otherwise specified and based on the lowest room category for travel in low season. For full terms and conditions, refer to the Booking Conditions on the inside back cover of this brochure.

REGIONAL FIJI ACCOMMODATION

SAVASI ISLAND RESORT, SAVUSAVU



One Bure Suite

Savasi Island
MAP PAGE 38

From **\$635** *^

- ❖ Private island experience ideal for romance and adventure loving couples
- ❖ Luxury pool villas surrounded by lush gardens and sweeping ocean views
- ❖ Unique experiences include cave dining, river tubing and pearl farm tour

Includes breakfast, lunch and 3 course dinner daily, return transfers from Savusavu Airport, welcome cocktail and revival foot soak on arrival.

Location: A boutique island resort just 10 minutes from Savusavu Airport on Vanua Levu. Distances: Beachfront, Savusavu 3km.

Getting There: From Nadi Airport by plane then free transfers from Savusavu Airport.

Property Features: Restaurant, Bar, Room service, Sea Spray Spa (day spa), Resort shop, Activity centre, Laundry service, Guest lounge, PADI dive centre, Use of snorkelling equipment and non-motorised water sports (free), 16 rooms.

Room Features: Wi-Fi, Private infinity pool (all villas), Ocean views (all villas), Air-conditioning, Patio, Tea/coffee making facilities, Outdoor bath (Sea Breeze Villa and Clifftop 5), Bathrobes, Hair dryer, Safe.

Max Capacity: Oceanfront Villa – 3, Grand Oceanfront Villa – 5. Other room types available.

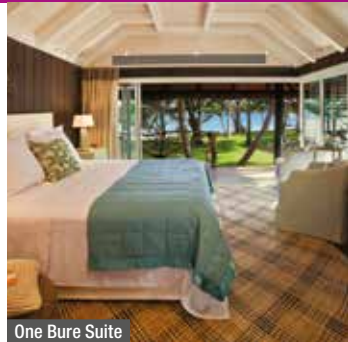
^ Minimum 2 night stay applies.



Oliver Botch



DOLPHIN ISLAND RESORT



One Bure Suite

Dolphin Island, Rakiraki
MAP PAGE 38

From **\$4301** *^

- ❖ Small, intimate and unique island resort
- ❖ Use of Hobie catamaran, kayaks, paddleboards and snorkelling equipment
- ❖ A maximum of 8 guests at a time on the luxury island

Includes breakfast, lunch and dinner, all standard drinks daily and return transfers from Nadi airport.

Location: Located 20 minutes by boat from shore, on the tip of Viti Levu. Distances: Beachfront, Nadi Airport 135km.

Getting There: Free return coach/launch transfers from Nadi Airport.

Property Features: Hilltop Sleep-Out bure, Pool, Library, Sundeck, 4 rooms.

Room Features: Ocean views, Air-conditioning, Balcony, Bathrobes, Hair dryer.

Max Capacity: One Bure Suite – 2, Two Bure Suites – 4, Three Bure Suites – 6, Four Bure Suites – 8.

^ Minimum 3 night stay applies.

JEAN-MICHEL COUSTEAU RESORT FIJI, SAVUSAVU



Savusavu Bay, Vanua Levu
MAP PAGE 38

From **\$1811** *^

- ❖ Great for couples and families with many diverse complimentary activities
- ❖ Families will love the kids club, free nanny and the three family pools
- ❖ Renowned Jean-Michel Cousteau Dive Centre

Includes breakfast, lunch & dinner daily, non-alcoholic beverages (excludes mocktails) and most activities including 5 weekly off-site excursions.

Location: Overlooking Savusavu Bay and surrounded by a marine sanctuary. Distances: Beachfront, Savusavu Airport 7km.

Getting There: From Nadi Airport by plane then vehicle transfers from Savusavu Airport.

Property Features: Private island, Pools (4), Restaurants (2 – including family and adults only), Room service, Bar, Bula Kids Club 0-12 years (free), Nanny service 0-5 years (free), Day spa, Laundry service (free), 25 burees.

Room Features: Private plunge pool (The Villa), Ocean views (except Gardenvue Bure), Spa (Honeymoon Point Reef Bure, The Villa), Air-conditioning, Sundeck, Fans, Hammock, Tea/coffee making facilities, Mini bar, Bathrobes, Safe.

Max Capacity: Gardenvue Bure/Oceanfront Bure – 4. Other room types also available.

^ Minimum 3 night stay applies.



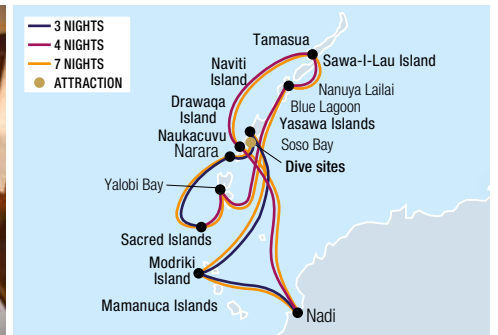
* FROM PRICES ARE A GUIDE ONLY, subject to change and availability and are in Australian Dollars. Prices are per room per night for 2 people, unless otherwise specified and based on the lowest room category for travel in low season. For full terms and conditions, refer to the Booking Conditions on the inside back cover of this brochure.



Drawaqa Island



Hibiscus Cabin



BLUE LAGOON CRUISES – 3, 4 & 7 NIGHT CRUISES

With over 75 years sailing the tropical waters of Fiji, Blue Lagoon Cruises specialises in offering three, four and seven night itineraries through Fiji's spectacular Mamanuca and Yasawa Island groups. The M.V. Fiji Princess accommodates a maximum of 64 guests, while the M.V. Yasawa Princess II accommodates a maximum of just 44 passengers - both allowing for a personal and friendly atmosphere, which is complemented by the enthusiastic all-Fijian crew. Both ships' small size means they can access bays and islands that would be impossible to reach in a larger ship. With a maximum of four hours cruising per day, there is more time for exploring onshore. Visit remote island villages, discover ancient Fijian culture and enjoy the private beach on Nanuya Lailai Island. Swim with Manta rays (seasonal) and stop off at the Sacred Islands and Sawa-I-Lau Caves. A Blue Lagoon Cruise is an ideal way to experience the hidden wonders of the South Pacific you previously thought only existed in the movies.

Vessel Features:

- Free satellite Wi-Fi (where reception is available)
- Day spa • Open air dining room
- Shaded sky deck bar and open air lounge and bar
- Splash pool (M.V. Princess only) • Guest laundry
- Lounge area

Cabin Features:

- Air-conditioning • Private ensuite • In-cabin movies
- Hair dryer • Television or tablet • Storage • Bathrobes
- Bathroom amenities
- External windows with ocean views

Includes:

- Onboard accommodation
- All meals including tea, coffee, morning and afternoon tea, filtered water and juice
- Complimentary mini bar (on the day of departure only) includes premium beer and soft drinks, French sparkling wine and snacks
- Complimentary sparkling wine with breakfast daily
- Gift of a tote bag, Pure Fiji gift pack per cabin and a reusable drink bottle and sulu (sarong) per person
- Complimentary Malamala Beach Club Day Pass with FJD50 food and beverage credit per adult
- Sunset hour offering 25% discount off drinks and complimentary canapés (selected days)
- Captains Dinner with complimentary sparkling wine, local beers and canapés served between 6pm to 7pm
- Filtered mineral water stations throughout the vessel
- All scheduled cruise excursions and activities

- Entrance fees for all activities and village visits
- Traditional Fijian entertainment
- Snorkelling equipment and use of all watersports at Nanuya Lailai (4 and 7 night cruise)
- Ship to shore transfers • All port charges and taxes
- Transfers to/from Port Denarau to/from Nadi Airport or Nadi/Denarau/Wailoaloa hotel

Departure Information:

From Port Denarau

3 NIGHT EXPLORER CRUISE

Departs: Friday at 3pm
Returns: Monday at 3pm

4 NIGHT WANDERER CRUISE

Departs: Monday at 12:00pm
Returns: Friday at 10am

7 NIGHT ESCAPE TO PARADISE CRUISE

Departs: Friday at 3pm
Returns: Friday at 10am

Sole use and launch transfer prices from Mamanuca Island resorts also available. Family Cruise departures also available, ask your travel agent for details.

3 NIGHT EXPLORER CRUISE	
Day 1:	Depart Port Denarau to Modriki Island
Day 2:	Soso Bay
Day 3:	Naukacuvu Island
Day 4:	Sacred Isles and arrive Port Denarau

4 NIGHT WANDERER CRUISE	
Day 1:	Depart Port Denarau to Yalobi Bay
Day 2:	Blue Lagoon
Day 3:	Sawa-I-Lau Island
Day 4:	Drawaqa Island
Day 5:	Arrive Port Denarau

7 NIGHT ESCAPE TO PARADISE CRUISE	
Combine the 3 and 4 night cruise for a 7 Night Escape to Paradise Cruise	

	Adult
3 NIGHT	
Hibiscus Cabin	\$1913* [^]
Orchid Cabin	\$2120* [^]
4 NIGHT	
Hibiscus Cabin	\$2714* [^]
Orchid Cabin	\$3012* [^]
7 NIGHT	
Hibiscus Cabin	\$4178* [^]
Orchid Cabin	\$4688* [^]

[^]Price based on per person twin share, booked at least 6 months in advance.

*FROM PRICES ARE A GUIDE ONLY, subject to change and availability and are in Australian Dollars. Prices are per person twin share, unless otherwise specified and based on the lowest room category and travel in low season. For full terms and conditions, refer to the Booking Conditions on the inside back cover of this brochure.

ACCOMMODATION INDEX

NADI & SURROUNDS

Crowne Plaza Fiji Nadi Bay Resort & Spa	19
Fiji Gateway Hotel	18
Tanoa International Hotel	18

Other Accommodation Options

- DoubleTree Resort by Hilton Fiji – Sonaisali Island
- First Landing Beach Resort and Villas
- Landers Bay Resort & Spa • Novotel Nadi
- Ramada Suites Wailoaloa Beach Fiji
- Smugglers Cove Beach Resort Nadi
- Wyndham Garden Wailoaloa Beach

DENARAU ISLAND

Radisson Blu Resort Fiji Denarau Island	21
Sheraton Fiji Denarau Villas	23
Sheraton Fiji Golf & Beach Resort	22
Sofitel Fiji Resort & Spa	24

Other Accommodation Option

- Hilton Fiji Beach Resort & Spa • The Palms Denarau

CORAL COAST & PACIFIC HARBOUR

Fiji Marriott Resort Momi Bay	28
Intercontinental Fiji Golf Resort & Spa	28
Likuri Island Resort Fiji	26
Nanuku Resort Fiji	29
Outrigger Fiji Beach Resort	29

Shangri-La Yanuca Island, Fiji	27
Tambua Sands Resort & Spa, Fiji	26
The Pearl Resort & Spa, Fiji	27
Warwick Fiji	28

Other Accommodation Options

- Bedarra Beach Inn
- Fiji Hideaway Resort and Spa
- The Uprising Beach Resort
- Yatulé Resort and Spa

MAMANUCA & YASAWA ISLANDS

Barefoot Kuata Island	31
Barefoot Manta Island	31
Beachcomber Island Resort	32
Castaway Island, Fiji	34
Lomani Island Resort & Spa – Fiji	35
Mana Island Resort & Spa – Fiji	32
Matamanoa Island Resort	32
Plantation Island Resort	33
Serenity Island Resort	31
Tokoriki Island Resort	36
Vomo Island	37
Waya Island Resort	35

Other Accommodation Options

- Likuliku Lagoon Resort
- Malolo Island Resort

- Mantaray Island Resort
- Musket Cove Island Resort & Marina
- Navutu Stars Resort
- Sheraton Tokoriki Resort & Spa
- Treasure Island Resort
- Tropica Island Resort
- Yasawa Island Resort & Spa

REGIONAL FIJI

Dolphin Island Resort	40
Jean-Michel Cousteau Resort Fiji	40
Koro Sun Resort & Rainforest, Savusavu	39
Savasi Island Resort, Savusavu	40
Volivoli Beach Resort, Rakiraki	38

Other Accommodation Options

- Grand Pacific Hotel
- Holiday Inn Suva
- Matangi Private Island Resort
- Paradise Taveuni
- Royal Davui Island
- Tanoa Plaza Hotel
- Tanoa Rakiraki Hotel
- The Wakaya Club & Spa



Shangri-La Yanuca Island, Fiji

Please read these Booking Conditions carefully as they apply to all bookings with Viva Holidays.

HOW TO BOOK

Contact your ATIA travel agent and request a reservation. All verbal quotes provided are an estimate only and subject to change until confirmed in writing.

PRICES & CONDITIONS

This brochure was produced on 3 October 2025. Unless otherwise stated, prices are in Australian dollars and include GST where applicable. Exchange rates used when pricing this brochure are as at 23 September 2025. All prices are subject to availability, subject to change and can be withdrawn or varied without notice. Prices are to be used as a guide only. Accommodation prices are based on the lowest room category in low season. All other prices are based on travel in low season. Some prices are based on dynamic rates, which means the price may be higher or lower than the advertised price if the price has been varied by the supplier after this brochure was printed. Price changes may occur by reason of matters outside our control which increase the cost of the Product or Service. Such factors include (without limitation) adverse currency fluctuations, fuel surcharges, or increases to taxes. Surcharges and minimum stays may apply due to demand, Christmas and New Year's Eve, school and public holidays, special events and other circumstances. All prices are the lowest available prices at the time of print and are a guide only. Please check all prices, availability, fees, conditions and information with your travel agent before booking.

If we must change any part of your booking for reasons beyond our control, for example, an Accommodation Supplier overbooks accommodation, or if there is an increase in taxes or Supplier charges, we will notify you. If any such changes result in your holiday costing more or otherwise being materially different from that originally booked, you may cancel the booking and we will refund any monies already paid less any charges levied by Suppliers.

PRICES DO NOT INCLUDE

Anything not specifically indicated as being an inclusion.

OMISSIONS & ERRORS

While every effort is made to ensure the accuracy and currency of the information in the brochures, errors or omissions may occur. All errors and omissions identified post the date of publication are notified to our retail partners to advise you. Please check with your agent for all up-to-date corrections, including prices and inclusions.

DEPOSITS & FINAL PAYMENTS

Deposit

A minimum non-refundable deposit of \$55 per person is payable within 7 days of confirmation of your booking. You will be notified at the time of booking if any additional deposit is required. All deposits are non-refundable for changes of mind or cancellations by you (subject to your rights under the Australian Consumer Law).

Final Payment

Final payment of your holiday cost is required no later than 30 days prior to departure or by sale end date or by the payment deadline specified in individual package conditions, whichever is earlier. Some services may require full payment at the time of booking. For bookings made less than 31 days prior to travel, full payment of holiday cost is required at the time your booking is confirmed.

Please ensure payments are made by the due dates. If this does not happen, our system will automatically cancel the booking without notice or liability to you.

Only upon payment of the full cost of your holiday do you have a final booking with the Supplier of the relevant good and/or service. In arranging your booking, Viva Holidays is acting as the agent of the Supplier of the relevant Product and at no time do you have a contract with Viva Holidays.

CREDIT & DEBIT CARD SURCHARGES

A fee will apply for payments made by debit and credit cards. Fees may vary depending on card type. Please check this fee with us or your travel agent when booking.

FEES

Amendment Fees

If you wish to change your booking prior to departure, an amendment fee of \$30 will be charged if the overall value of the booking remains the same or decreases, in addition to any fees imposed by the Supplier of each service booked.

Late Booking Fees

A fee of \$30 will be charged for all bookings made less than 7 days prior to travel.

All fees can be varied without notice.

CANCELLATIONS & REFUNDS

Prior to Final Payment

Your deposit is forfeited.

After Final Payment

There will be no refund of your deposit, in addition to any fees imposed by the Supplier, which may be up to 100% of monies paid.

After Travel

There will be no refund if you cancel your booking once travel has commenced. There will be no refund for unused services, except for OPEN DATED services where the service was not booked with the Supplier. Requests for refunds received more than 6 months after departure date will not be accepted.

Should a refund after departure be approved, a \$110 refund processing fee will apply.

RESPONSIBILITY

Viva Holidays acts as an agent for the Suppliers (transport, tour, event or accommodation providers) who provide the various goods and/or services (Products). All bookings are subject to the terms and conditions and limitations of liability imposed by each Supplier. It is therefore important for you to obtain and read the applicable Supplier's terms and conditions as they may limit or exclude their liability to you.

In producing this brochure, we have used information provided by Suppliers. Irrespective of any measures taken by us to ensure the information contained in this brochure is accurate at the time of printing, Viva Holidays disclaims and will be exempt from liability in respect of anything misleading, false, incomplete or inaccurate and any errors, misdescription and all associated disappointment, loss, expense, damage, inconvenience, delay, death, shock, illness or injury, however caused.

Viva Holidays does not control the manner in which Products featured within this brochure are provided. Viva Holidays disclaims and will be exempt from liability for anything to do with the supply of such Products. This includes liability (whether as a matter of contract, tort, statute, restitution, or otherwise) for any direct, indirect or consequential loss, liability, claim, cost, expense, proceeding, demand, penalty, disappointment, death, injury, illness, shock, inconvenience or delay. This limitation of liability also applies irrespective of the cause, including negligence of us or a Supplier, withdrawal, cancellation or failure to provide a Product, delay, any variation in the Product, the provision of substitute Products or a change in the Supplier. Without limitation, Viva Holidays will not be responsible if the Product is not available due to inclement weather conditions or other acts of God, civil disturbances, fire, floods, acts of Government or any other authorities, accident to or failure of machinery or equipment or industrial action.

MAPS & PHOTOGRAPHS

The maps in this brochure are intended as a guide only and are not to scale. They do not necessarily reflect actual routings or accommodation or attraction locations. Accommodation room photographs are representative only and actual rooms occupied may vary in decor and inclusions from those shown.

Some images used in this brochure are supplied courtesy of tourist bureaus, hotels, tour operators, Tourism Fiji/Andrew Lewthwaite, Blue Lagoon Cruises, Aaron K March, Bruce Southwick, Chris McLennan, David Kirkland, Gerry Oleary, Marie Le Coze, Markus Gortz, Oliver Bolch, Peter Lange, Rob Rickman, Ryan Linnegar, Stephen Goodenough Photographer, Stray Cat Images, Tessa Crisp, Tessa Crisp, The Roving Rovas and Thomas Vignaud.

PRODUCT DESCRIPTIONS

Product descriptions and accommodation ratings featured in this brochure are provided by the individual Suppliers. Facilities, features or ratings are subject to change at any time. Tours may not operate on certain dates and durations and departure times are approximate only. You should check at the time of booking for any changes to published information of which we may be aware.

BONDS

Bonds or credit card imprints are required by most Suppliers at the time of check-in to cover incidentals and fees not included in your holiday cost.

TRANSFERS & TOURS

Some Accommodation Suppliers provide courtesy transfers to/from the airport. It is essential that these transfers are pre-booked. Some Tour Suppliers provide complimentary pick up and return to your holiday accommodation and require a minimum number of passengers to operate. If minimum numbers are not achieved tours may be cancelled at short notice. Additionally, some Suppliers reserve the right to cancel departures for other reasons, including bad weather. Some tours and itineraries may also vary and attractions may be substituted due to seasonal conditions. Viva Holidays will not be held liable for a service variation, cancellation, delay or withdrawal, or a Supplier's failure to notify you. A full refund applies for the cancelled tour.

TRAVEL INSURANCE

We strongly recommend you take out appropriate travel insurance to cover your travel arrangements.

INTERNATIONAL TRAVEL

Each passenger is responsible for their own visa, passport (with at least 6 months validity), immigration, quarantine, customs and other requirements of the countries to be visited or transited through. Viva Holidays makes no representations as to the safety, conditions or other issues that may arise at any destination. Travel advice is available from the Australian Government at smartraveller.gov.au.

HEALTH

You must ensure you are aware of any health requirements and recommended precautions relevant to your travel and carry all necessary vaccination documentation with you to the countries to be visited. Failure to present required vaccination documentation may result in you being denied entry into a country. We recommend that you consult with your local doctor, travel medical service or specialist vaccination clinic before commencing your travel. General health advice for all destinations is also available from the Australian Government at smartraveller.gov.au.

PRIVACY

Viva Holidays collects information about you (including health information where necessary) to provide products and services to you, process your travel arrangements, facilitate your participation in loyalty programs and conduct marketing activities and market research. If the information is not provided, Viva Holidays may not be able to provide the Service requested. Viva Holidays may disclose your personal information to its related companies, carriers, travel service providers, organisations which provide services to Viva Holidays (more details are available in our Privacy Statement on our website viva-holidays.com.au) and various law enforcement agencies, airports and governments around the world for security, customs and immigration purposes. You may gain access to the information Viva Holidays holds about you by contacting our Privacy Officer in writing at 179 Normanby Road, South Melbourne VIC 3205 Australia or on privacyofficer@viva-holidays.com.au.

MONIES NOT HELD ON TRUST

All monies paid by you to us will be the property of Viva Holidays and will be a debt due and payable to the relevant Supplier (contingent on availing) once the services to which the money relates have been availed, or the relevant booking is cancelled (subject to cancellation fees). You agree and acknowledge that such monies will not be held by Viva Holidays on trust for or on behalf of you, and we may hold such monies in any account as we see fit, including with our own and/or other customer monies.

GOVERNING LAW

These conditions are governed by the laws of Victoria, Australia and any action arising under them or in any way connected with a booking may be brought only in a court in Victoria, Australia, subject to any law which is expressly inconsistent with this.

You acknowledge that you are 18 years of age or older and that you understand and agree with the above terms and conditions and our Privacy Policy. Please read our full booking terms and conditions at viva-holidays.com.au/policies/booking-conditions.



Mana Island, Mamanuca Islands

Tourism Fiji



helloworld

TRAVEL
THE TRAVEL PROFESSIONALS



In store



13 14 15



helloworld.com.au

