

VIVA
HOLIDAYS

UK & IRELAND



2026



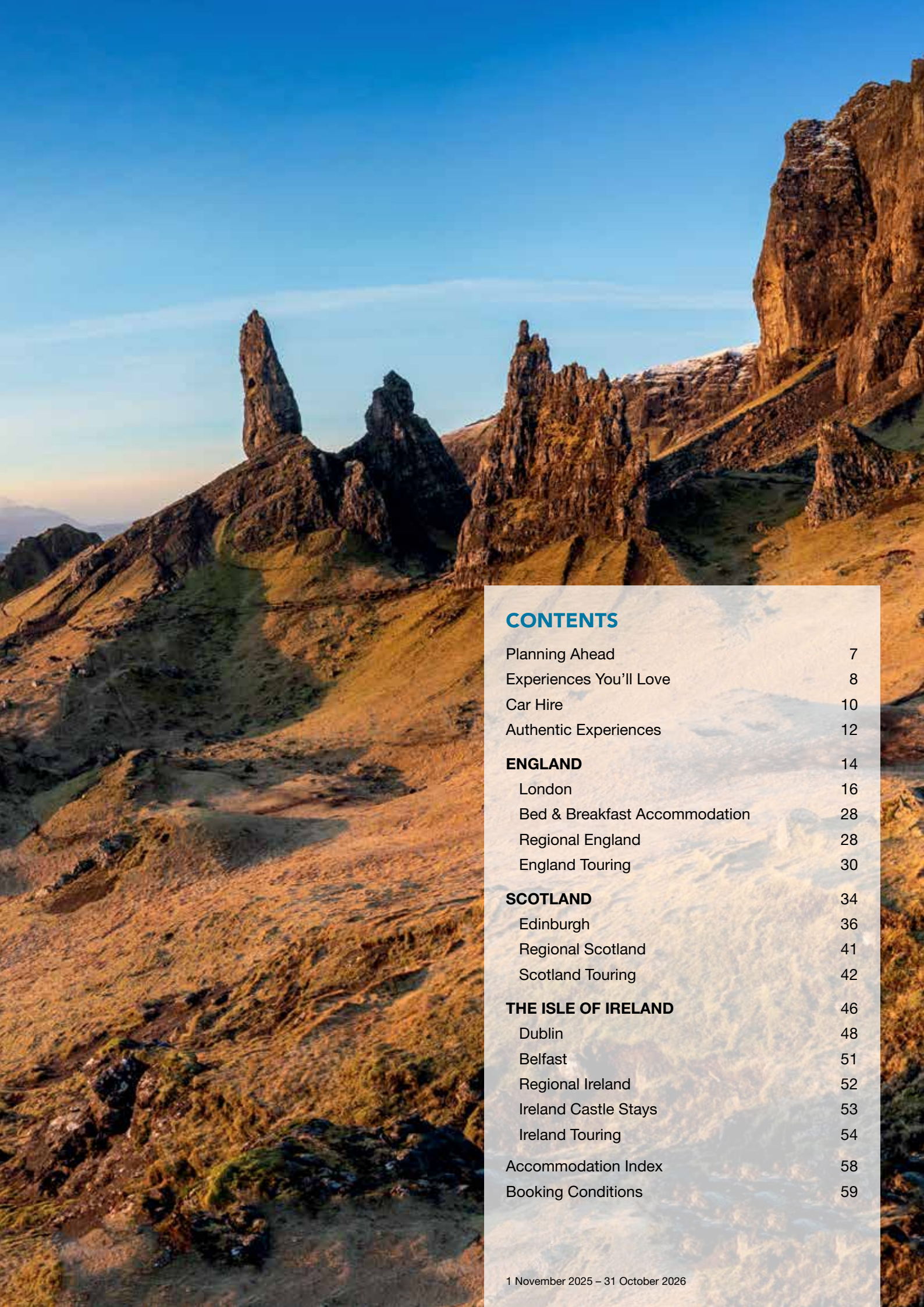
EXPERIENCE UK & IRELAND WITH VIVA HOLIDAYS!

Uncover the distinct culture and timeless beauty of the UK and Ireland. Explore ancient ruins, centuries-old castles and fortresses. Travel along rugged coastlines and through rolling green hills. Enjoy a pint at a quaint country pub and get lost in world-class cities.

With over 50 years of experience in the travel business, trust us to make your dream UK and Ireland holiday a reality.

CHOOSE VIVA HOLIDAYS AND LIVE A LIFE OF TRAVEL.





CONTENTS

Planning Ahead	7
Experiences You'll Love	8
Car Hire	10
Authentic Experiences	12
ENGLAND	14
London	16
Bed & Breakfast Accommodation	28
Regional England	28
England Touring	30
SCOTLAND	34
Edinburgh	36
Regional Scotland	41
Scotland Touring	42
THE ISLE OF IRELAND	46
Dublin	48
Belfast	51
Regional Ireland	52
Ireland Castle Stays	53
Ireland Touring	54
Accommodation Index	58
Booking Conditions	59

WHY CHOOSE VIVA HOLIDAYS

Viva Holidays has been creating exceptional worldwide holiday experiences for over 50 years. Your arrangements will be managed by our local travel specialists who are experts in designing holidays to perfectly suit your travel needs. You'll always be in experienced hands when you book with Viva Holidays.

MORE CHOICE

Our exclusive product range caters for every type of holiday. Accommodation, car hire, theme parks, attractions, day and extended tours, rail and cruises - we've got it covered.

With incredible deals available throughout the year, make sure you ask your travel agent for our best offers.

EXCEPTIONAL SERVICE

Exceptional customer service is behind everything we do. That's why we were recognised as the Most Outstanding Wholesaler – Product/Service in 2023 and 2024 at the National Travel Industry Awards. Our Australian-based team are passionate about travel and providing outstanding service. Let us do the research, planning and booking to ensure your holiday is one you'll always remember.



PEACE OF MIND

Viva Holidays is a proud member of ATIA Accreditation, the Australian Travel Industry Association's accreditation scheme that sets the benchmark of quality for the travel industry. When you book your holiday with Viva Holidays, you will have peace of mind knowing that you are booking with one of Australia's most trusted travel companies.

24/7 ASSISTANCE

When you book with Viva Holidays, you'll never be on your own. In the event of unforeseen circumstances, our customer care team is available 24 hours a day, seven days a week.

TAILOR MADE HOLIDAYS

Whether it's driving along Ireland's wild Atlantic coast, learning the craft behind Scottish Whisky making processes, or exploring England's beautiful villages, our team of travel specialists can design a custom made itinerary just for you!

Let us create your dream holiday today.

LIVE A LIFE OF TRAVEL. LET VIVA HOLIDAYS TAKE YOU THERE!







- ✈ INTERNATIONAL AIRPORT
- ATTRACTION
- ⋯ FERRY
- CHANNEL CROSSING

PLANNING AHEAD

UK and Ireland is a wonderful place to visit all year round. Before you begin your next trip, make sure to read our helpful travel information, to ensure you make the most of your time in London, Dublin and beyond.



WHEN TO GO

The weather in the UK and Ireland varies throughout the year with four distinct seasons. Summer (June – August) is the warmest season, with long sunny days and cooler evenings. Take advantage of the extra daylight hours to explore quaint country villages or dine al fresco.

In autumn (September – November), the temperature starts to dip and nights become colder. It's a beautiful time to visit as the countryside is ablaze with colour, autumn leaves turn riotous shades of yellow, orange and red.

Winter (December – February) brings shorter days and cold conditions, often with rain and sometimes snow. It also brings Christmas, a magical time of year with markets, mulled wine and hot chocolate.

In spring (March – May), the days slowly get longer and temperatures warmer but it can still be quite wet and windy. However, spring showers bring May flowers and the Chelsea Flower Show!

GETTING AROUND

The best way to discover the UK and Ireland is by car or rail. Self drive holidays allow you to explore at your own pace. Remember in the UK and Ireland, driving is on the left hand side of the road. Travelling by train is a scenic and relaxing way to see the country and adds a sense of adventure to your trip.

TIME

The UK and Ireland are 10 hours behind Australian Eastern Standard Time (AEST). Daylight savings in the UK and Ireland is observed from March to October, where their clocks are turned forward by 1 hour.

ELECTRICITY

220-240v 50Hz. An international adaptor is required.

VISAS & PASSPORTS

All travellers to the UK and Ireland must carry a passport valid for at least six months beyond the date of departure from Australia. All travellers to the UK are required to obtain an Electronic Travel Authorisation (ETA) prior to travel. As visa information can change at any time, we recommend you seek advice regarding passports, visas, and other travel requirements at smartraveller.gov.au.

CURRENCY

UK: Pound Sterling (GBP).
Ireland: Euro (EUR).

TIPPING

Tipping in UK and Ireland is not as prevalent as in other countries. Some restaurants include a service charge on the bill, in which case a tip is unnecessary.

TEMPERATURE & RAINFALL

London, England	J	F	M	A	M	J	J	A	S	O	N	D
Temperature (max °C)	5	5	7	10	13	17	19	18	16	12	8	6
Average rainfall (mm)	56	39	46	45	49	50	48	53	56	60	61	58

Edinburgh, Scotland	J	F	M	A	M	J	J	A	S	O	N	D
Temperature (max °C)	3	3	5	8	10	13	15	14	12	10	6	4
Average rainfall (mm)	61	43	51	43	54	52	63	70	70	70	68	61

Cardiff, Wales	J	F	M	A	M	J	J	A	S	O	N	D
Temperature (max °C)	5	4	7	8	11	14	16	16	15	12	8	6
Average rainfall (mm)	90	60	90	40	30	40	40	60	50	70	70	70

Belfast, Northern Ireland	J	F	M	A	M	J	J	A	S	O	N	D
Temperature (max °C)	4	4	6	7	10	13	15	14	12	10	6	5
Average rainfall (mm)	93	67	67	62	64	69	77	94	97	94	97	95

Dublin, Ireland	J	F	M	A	M	J	J	A	S	O	N	D
Temperature (max °C)	5	5	6	8	11	14	15	15	13	11	7	6
Average rainfall (mm)	70	52	53	50	60	55	53	71	75	76	72	80

EXPERIENCES YOU'LL LOVE

The best part of any journey is the experiences you have along the way, leaving you with memories to relive long after the holiday is over.

The UK and Ireland has countless amazing things to see and do. Here are some of our favourites to inspire your wanderlust.





Westminster Abbey, London

ICONIC LANDMARKS

Get up close to world famous sights across the UK and Ireland including an ancient wonder of the world – Stonehenge. In London, marvel at Big Ben, explore the Tower of London and visit Westminster Abbey, the site of many royal weddings. Wander the cobbled streets on the Royal Mile in Edinburgh. In Ireland, gaze in awe at the Cliffs of Moher.



Jacobite Steam Train, Scotland

FILM & TV LOCATIONS

The UK and Ireland are home to many iconic film and TV locations. Downton Abbey is set at stunning Highclere Castle in rural England. Tour Warner Bros. Studio in London and discover the magical world of Harry Potter™. Journey through Scotland on the Jacobite Steam Train, the real-life Hogwarts Express. In Northern Ireland explore the locations of Game of Thrones.



Llanrwst, Wales

SCENIC DRIVES

Explore classic driving routes with breathtaking scenery. Drive through England's beautiful Yorkshire Dales, awe-inspiring Lakes District or the winding roads of the Cotswolds. Head for roads less travelled in Scotland and meander through remote glens. The Wild Atlantic Way and the famous Ring of Kerry are spectacular scenic drives in Ireland.



Edinburgh Castle

HISTORIC CASTLES & PALACES

A trip to the UK and Ireland would not be complete without visiting historic castles and palaces. Explore the homes of the British Royal Family. Visit Buckingham Palace and uncover the long history at Windsor Castle. In Scotland, learn about the rich history of Edinburgh Castle. Discover Blarney Castle and kiss the Blarney Stone in Ireland.



PUB CULTURE

There's no better place to learn about the culture and tradition of the UK and Ireland than at one of the many pubs. It's very easy to while away a sunny afternoon with a pint of bitter ale at a typical English country pub. Or listen to the infectious rhythm of traditional Irish music at the Brazen Head in Dublin – the oldest surviving pub in Ireland.



The Royal Edinburgh Military Tattoo

FESTIVALS & EVENTS

Discover world-famous festivals throughout the UK and Ireland. Feel the beat of the drum at the Royal Edinburgh Military Tattoo, held every August. See the world's biggest artists at the Glastonbury Festival. Experience art, culture and music at the Fringe Festivals held in Edinburgh and Dublin. Join in the revelry of St Patrick's Day in Ireland.

CAR HIRE



Glen Coe, Scotland

AVIS

Why not add Avis to your travel plans and make the most of your holiday by enjoying the flexibility and convenience that an Avis car rental provides.

Situated at all major airport and city locations and offering a wide range of late model vehicles to choose from, all at great rates, renting with Avis is sure to make your holiday escape more enjoyable.

Includes:

- Unlimited kilometres
- UK: Super Collision Damage Waiver (SCDW)
- UK: Super Theft Protection (STP)
- Ireland: Collision Damage Waiver (CDW)
- Third Party Liability
- Airport fee
- Local taxes
- Vehicle Licensing fee
- All vehicles include air-conditioning

Does Not Include:

- Additional insurance/waivers
- One way rental fee
- Tolls
- Fuel
- Additional driver fee
- Optional services and equipment

Excess:

An excess applies to drivers of all vehicles. An optional excess reduction can be purchased direct for an additional fee. Conditions apply.

Multi-Country Rentals:

Purchasing Continental Cover allows you to travel throughout the UK and Ireland. Continental Cover must be requested at time of booking.

Based on per vehicle per day (24 hour hire period). Not all vehicles are available at all locations. Car hire prices for other countries, cities, car types and travel dates are also available. A credit card imprint is required when you take delivery of your vehicle to cover any additional costs such as fuel, child seats etc. Young Driver surcharges apply in some countries. Age and car type selected will impact surcharge amounts. Details on application. Drivers must hold a full and valid drivers licence and have held that licence for at least 12 months. Check with your travel agent for details.



Suitcase

UNITED KINGDOM

FIAT 500 (or similar)

GROUP A

- Manual
- 3 door hatch



x4

1

3-6 DAYS	7-13 DAYS	14+ DAYS
\$118*	\$96*	\$91*

SUPER FULLY INCLUSIVE RATES

VAUXHALL CORSA (or similar)

GROUP B

- Manual
- 5 door hatch



2

3-6 DAYS	7-13 DAYS	14+ DAYS
\$126*	\$102*	\$97*

SUPER FULLY INCLUSIVE RATES

VAUXHALL CROSSLAND (or similar)

GROUP E

- Manual
- 5 door SUV



x5

2

3-6 DAYS	7-13 DAYS	14+ DAYS
\$136*	\$110*	\$104*

SUPER FULLY INCLUSIVE RATES

NISSAN QASHQAI (or similar)

GROUP F

- Manual
- 5 door SUV



x5

3

3-6 DAYS	7-13 DAYS	14+ DAYS
\$159*	\$129*	\$122*

SUPER FULLY INCLUSIVE RATES

PEUGEOT 2008 (or similar)

GROUP I

- Auto
- 5 door SUV



x5

2

3-6 DAYS	7-13 DAYS	14+ DAYS
\$183*	\$148*	\$141*

SUPER FULLY INCLUSIVE RATES

MG HS (or similar)

GROUP J

- Manual
- 4 door sedan



x5

3

3-6 DAYS	7-13 DAYS	14+ DAYS
\$189*	\$153*	\$145*

SUPER FULLY INCLUSIVE RATES

IRELAND

OPEL CORSA (or similar)

GROUP A

- Manual
- 4 door hatch



x4

1

2 DAYS	3-13 DAYS	14+ DAYS
\$139*	\$93*	\$88*

FULLY INCLUSIVE RATES

RENAULT CAPTUR (or similar)

GROUP L

- Manual
- 4 door SUV



x4

1

2 DAYS	3-13 DAYS	14+ DAYS
\$175*	\$117*	\$111*

FULLY INCLUSIVE RATES

OPEL ASTRA (or similar)

GROUP P

- Auto
- 5 door hatch



x5

3

2 DAYS	3-13 DAYS	14+ DAYS
\$217*	\$145*	\$138*

FULLY INCLUSIVE RATES

NISSAN QASHQAI (or similar)

GROUP M

- Manual
- 5 door SUV



x5

4

2 DAYS	3-13 DAYS	14+ DAYS
\$228*	\$152*	\$144*

FULLY INCLUSIVE RATES

SEAT LEON ESTATE (or similar)

GROUP E

- Manual
- 5 door sedan



x5

4

2 DAYS	3-13 DAYS	14+ DAYS
\$238*	\$159*	\$151*

FULLY INCLUSIVE RATES

SKODA OCTAVIA (or similar)

GROUP F

- Manual
- 4 door sedan



x5

4

2 DAYS	3-13 DAYS	14+ DAYS
\$282*	\$188*	\$179*

FULLY INCLUSIVE RATES

Experience World Class



Embark on an exquisite journey with Singapore Airlines to any of our three UK gateways: London Gatwick, Heathrow or Manchester.

Experience spacious seats, gourmet dining, and world-class service from our cabin crew, tailored to elevate your experience.

We look forward to welcoming you on board.

AUTHENTIC EXPERIENCES

Our Authentic Experiences explore off-the-beaten path destinations that venture beyond typical tourist spots, to allow you to experience local customs and traditions that are unique to each region. The essence of these experiences is to develop a deeper understanding of a destination and to connect with local people and their culture, to create enriching travel moments that you will long remember.



Brodie Castle, Scotland



Whiskey Island

Lambay Whiskey Experience, Ireland



Tower of London

Yeoman Warder® Tower of London

Collaborating with local partners, we offer a range of private experiences designed to enhance your holiday and to leave a lasting impact.

Here is a small sample of these incredible activities lead by local experts.

- Soak up the atmosphere of an English Premier League match where passionate fans, roaring chants, and electrifying gameplay create an unforgettable experience.
- Forge a silver ring at a Silver Works jewellery making workshop in Dublin.
- Enjoy a consultation with an expert genealogist at EPIC, The Irish Emigration Museum.
- Meet the Maker for a private tour at Burren Smokehouse.
- Lambay Island Whiskey Experience including a guided tour with a member of the Baring family.
- Private, 'after hours' Robert Burns Birthplace Museum vaults tour with a curator.
- Meet Yeoman Warder before a private viewing of the Crown Jewels.
- Arrive in style, with a local bagpiper to pipe you on arrival at your hotel or enjoy a private demonstration.
- Explore Brodie Castle in Scotland with the Head Housekeeper providing expert insight and personal connections.
- Explore the night sky in the Dark Sky area of Northumberland National Park from the Battlesteads Observatory.
- Go behind the scenes at Canterbury Cathedral with a resident stonemason.
- Welsh banquet within the stone-vaulted 15th century undercroft at Cardiff Castle.

As these are bespoke experiences, prices and availability are on request.



Images by Johan Persson/ABBA Voyage

ABBA[®] Voyage

A concert like no other

AGNETHA, BJÖRN, BENNY and FRIDA have created the kind of concert they always wanted, performing for their fans at their very best: as digital versions of themselves backed by today's finest musicians. Blending cutting-edge technology, spectacular lighting, and some of the most beloved songs ever written, ABBA take to the stage in a whole new way.

Since opening in 2022, over three million fans from over 175 countries have visited the ABBA arena in London. And in May 2025, ABBA Voyage added a little something to the concert, in celebration of its third anniversary.

ABBA ARENA, LONDON

Housed in the ABBA Arena, a purpose built venue located in the Queen Elizabeth Olympic Park, ABBA Voyage incorporates state-of-the-art technology in a 3000 capacity auditorium. Easily accessible from central London and close to a range of shops, restaurants and hotels, guests can easily turn their visit into a short break.

JOIN US ON THE DANCE FLOOR

The ABBA Arena has plenty of ticket options at a wide range of prices. Choose between auditorium style seating, dance floor standing tickets or, if you're looking for the ultimate party experience, book one of our private dance booths.

These are flexible spaces, so you can book an individual ticket, or a whole booth for your party. Each booth has seating, plus your very own dance floor and dedicated booth bar. ABBA Voyage is the perfect place for any celebration, no matter the size of your group.



OCEANBIRD LOUNGE

You can also upgrade your experience with access to the exclusive Oceanbird Lounge, which offers free-flowing food and drinks before the concert, as well as priority entry to the arena. Oceanbird Lounge upgrades are available to all ticket holders.



'A spectacular vision of pop's future'

Time Out

Please see page 17 for more information on **ABBA Voyage** packages.

ENGLAND

Few countries inspire quite like England, home to world famous landmarks, centuries-old castles and breathtaking landscapes. From the bustling cities of London and Liverpool to the quaint villages dotted throughout the Cotswolds and Lake District, England offers endless possibilities for things to see and do. Here are a few of our top picks.





Tower Bridge, London

LONDON

London pulses with history, culture, and charm. From iconic landmarks like Big Ben and Tower Bridge to vibrant markets and world-class museums, the city offers something for every traveller. Wander through royal parks, enjoy afternoon tea, or catch a West End show – London is a timeless blend of tradition and modern flair waiting to be explored.



Lake Windermere, Lake District

LAKE DISTRICT

Admire the sparkling lakes, majestic peaks, and picturesque villages of the Lake District. Renowned for its high mountainous region, number of dazzling lakes and impressive national park, the Lake District is a true haven for nature lovers, hikers and inspiring artists. A place where every corner reveals sensational beauty of nature and charming towns.



Chipping Campden, The Cotswolds

COTSWOLDS

The Cotswolds are described as quintessential England with rolling hills, stone walls, honey-coloured villages, and beautiful manor houses covering the region. Located on the Southwest of England, with postcard perfect villages, historic market towns, lush green meadows, and scenic countryside, the region offers a wonderful escape into rural English beauty.



Port Isaac, Cornwall

CORNWALL

Sitting in the far southwest of England, Cornwall enchants visitors with its captivating scenery through a diverse blend of deep, wooded valleys, and ancient rugged moorlands. Rich in Celtic heritage, the region is covered with numerous ancient sites, mystical stone circles, historic standing stones, and stunning seaside villages dotted along the coastline.



Royal Liver Building, Liverpool

LIVERPOOL

Nestled in northwest England, Liverpool is a vibrant city that resonates deeply with fans of The Beatles and football alike. Beyond its world famous musical legacy, this coastal city offers beautiful distinctive buildings, notable green parks, spectacular waterfront views, rich maritime history, thriving art and cultural scenes.



York Minster, York

YORK

historic city located in North Yorkshire, York is noted for its Viking roots and rich Roman history. Covered by well-preserved medieval architecture and Georgian townhouses, the city is a captivating blend of heritage and charm. Boasting a wealth of historic buildings, York offers a timeless experience at every turn, where the landscape takes you back in time.



Buckingham Palace

LONDON

England's shining capital is home to many famous monuments and attractions. Offering a mix of old and new with palaces and pubs, churches and cathedrals, battlements and bridges, all reflecting London's long and varied history.

SEE

- See the Changing of the Guard at Buckingham Palace
- Admire Harry Potter movie memorabilia at the Warner Bros. Studio Tour London

DO

- Enjoy a musical in London's West End
- Take a spin on the London Eye
- Visit the famous Westminster Abbey
- Shop for high-street fashion along Oxford Street

EAT & DRINK

- Indulge in an English afternoon tea at The Rubens at the Palace
- Sip on a pint at the Churchill Arms, Kensington

WHAT'S ON

New Year's Day Parade

1 January

London Fashion Week

19 to 23 February, 18 to 22 September

London Marathon

26 April

Chelsea Flower Show

18 to 21 May

Trooping the Colour

13 June

Royal Ascot

16 to 20 June

The Championship, Wimbledon

29 June to 12 July

Notting Hill Carnival

30 August



REF.	HOTELS	PAGE	REF.	HOTELS	PAGE
1	44 Curzon Street Apartments by Mansley	24	14	The Marble Arch Hotel by Thistle	26
2	Alexandra Hotel	23	15	My Place Hotel	23
3	The Biltmore Mayfair	27	16	No. 1 The Mansions by Mansley	26
4	Cartwright Gardens Apartments	23	17	Phoenix Hotel	23
5	The Clermont Victoria	25	18	Residential Kensington Serviced Apartments	26
6	Collingham Serviced Apartments	24	19	The Resident Victoria	26
7	Commodore Hotel	23	20	The Royal National Hotel	24
8	Copthorne Tara Hotel	25	21	St Giles London	24
9	The Gate London City	25	22	Strand Palace Hotel	27
10	GEM Strathmore Hotel	25	23	Thistle Hyde Park Kensington Gardens	27
11	Grand Plaza Serviced Apartments	25	24	The Tower Hotel by Thistle	27
12	K Hotel Kensington	23	25	Tower Suites by Blue Orchid	27
13	Leonardo Royal Hotel London Tower Bridge	25	26	The Wellington by Blue Orchid	27

LONDON TOURS



PRIVATE TRANSFERS

Arrive in style with a private car transfer.

	1 to 2 People	3 to 6 People
Heathrow Airport	\$392* [^]	\$569* [^]
Gatwick Airport	\$476* [^]	\$661* [^]
Stansted Airport	\$502* [^]	\$684* [^]
Luton Airport	\$502* [^]	\$684* [^]
London City Airport	\$325* [^]	\$510* [^]

[^]Price based on one way per vehicle to London city centre accommodation.



LONDON HOP-ON HOP-OFF

Discover the key sights of London on an open-top double decker bus.

Duration: 1 day to 48 hours
Departs: Daily every 10 – 60 minutes from 8:30am – 6pm (seasonal variations may apply)

	Adult	Child 5-15 yrs
1 Day	\$92*	\$55*
24 Hours	\$107*	\$66*
48 Hours	\$131*	\$79*



LONDON RIVER PASS

The London Eye offers spectacular changing views from its central position opposite Big Ben. Tickets include access to the 4D Experience including the only 3D aerial footage of London.

Duration: 24 hours
Departs: Daily every 40 minutes from 10am – 7:20pm (seasonal variations may apply)

	Adult	Child 5-15 yrs
24 Hour Pass	\$52*	\$35*



LONDON THEATRE TICKETS

London Theatre Tickets are available for blockbuster hits such as Frozen, Matilda, The Book of Mormon, and other classics including The Mousetrap, The Lion King, and, of course, the world's longest running musical Les Misérables.

	Adult/Child 7+ yrs
Les Misérables	\$80* [^]

[^]From price based on lowest available ticket category and will fluctuate by show, subject to availability and may be restricted to specific performance days and times. Ask about prices for other shows.



ABBA VOYAGE

Experience ABBA Voyage – an unforgettable concert experience from one of the biggest pop acts of all time, featuring ABBA's most popular hits. Travel on an ABBA Voyage branded coach and enjoy Skip the Line entry.

Duration: 5 hours
Departs: Thu to Mon from London, times vary

	Adult/Child 7+ yrs
Dance Floor Ticket	\$208*
Seated Ticket	\$263*
Premium Seat Ticket	\$481*



AFTERNOON TEA

Enjoy traditional afternoon tea at either The Rubens at the Palace Hotel overlooking the Royal Mews or The Milestone Hotel opposite Kensington Palace.

Time: Rubens: Daily at 1pm, 2pm, 3pm, 4pm or 5pm
 Milestone: Daily at 1pm, 3pm or 5pm

	Adult	Child 1-11 yrs
Rubens Afternoon Tea	\$211*	\$101*
With Champagne	\$256*	N/A
Milestone Afternoon Tea	\$197*	\$93*
With Champagne	\$233*	N/A



TOWER OF LONDON

Step back almost 1000 years in time to uncover the history of one of London's most famous landmarks. Get up close to the priceless Crown Jewels.

Duration: 4 hours
Open: 9am – 5:30pm Tue to Sat (Mar – Oct)
 10am – 5:30pm Sun, Mon (Mar – Oct)
 Times may vary (Nov – Feb)

	Adult	Child 5-15 yrs
Admission	\$86*	\$43*



KENSINGTON PALACE

Explore the birthplace of Queen Victoria and home to young royals for over 300 years. Discover the story of Princess Victoria, the young girl destined to be queen, see the magnificent King's and Queen's State Apartments and the Jewel Room which displays gems commissioned for Queen Victoria by her husband Albert.

Duration: 2 hours
Open: 10am – 5pm Wed to Sun (last admission)

	Adult	Child 5-15 yrs
Admission	\$50*	\$25*



WESTMINSTER ABBEY

Learn about the remarkable history of the 1000-year old Abbey on this guided tour. Enjoy refreshments in the 14th century Cellarium before priority entry to the Abbey through the cloisters in Dean's yard.

Duration: 2 hour 15 minutes
Departs: From London at 9am, 11am Mon to Sat (Apr – Oct), Mon, Wed, Fri (Nov – Mar)

	Adult	Child 3-16 yrs
Abbey Tour & London Eye	\$284*	\$263*
Abbey Tour Only	\$168*	\$147*

*PRICES ARE A GUIDE ONLY, subject to change and availability and are in Australian Dollars. Prices are per person, unless otherwise specified and based on travel in low season. For full terms and conditions, refer to the Booking Conditions on the inside back cover of this brochure.

LONDON TOURS



AFTERNOON TEA BUS

Step aboard London's Afternoon Tea Bus for a guided tour filled with iconic sights and a freshly prepared menu by an onboard Chef. Enjoy sweet and savoury treats with PG Tips tea on this unforgettable tour.

Duration: 90 minutes

Departs: Daily from London at 11:30am, 2pm, 4:30pm

	Adult	Child 5-17 yrs
Lower Deck Seating	\$124*	\$114*
Upper Deck Seating	\$166*	\$156*
Premium Seating	\$187*	\$177*



WARNER BROS. STUDIO TOUR – THE MAKING OF HARRY POTTER

Experience the magical world of Harry Potter™ on this self-guided tour. See the original sets, props and costumes that brought the 8-movie series to life.

Duration: 7 hours

Departs: Daily from London at 8:15am, 9:15am, 10:15am, 11:15am, 12:15pm, 1:45pm

	Adult	Child 5-15 yrs
Sightseeing Tour	\$284*	\$273*



HARRY POTTER FILM LOCATIONS

Follow in the footsteps of the world's most famous wizard on this enchanting Harry Potter-themed walking tour of London. Visit the real-life locations that provided a backdrop for some of the most iconic locations in the wizarding world of the Harry Potter books and films.

Duration: 3 hours

Departs: Daily from London at 9am, 2pm (Apr – Oct), Mon, Wed, Thu, Sat (Nov – Mar)

	Adult	Child 3-16 yrs
Walking Tour	\$63*	\$53*



CHURCHILL WARTIME TOUR

Explore the heart of Westminster on this walking tour, tracing the footsteps of Winston Churchill during WWII and his bond with US President Franklin D. Roosevelt. Experience Churchill's legacy through his speeches and wartime decisions at the House of Commons.

Duration: 90 minutes

Departs: Tue, Thu, Sat from London at 2pm

	Adult	Child 3-16 yrs
Walking Tour	\$63*	\$53*



JACK THE RIPPER

Walk in the footsteps of London's most infamous serial killer. Hear gruesome tales of the East End in 1888, by an expert guide during your walking tour.

Duration: 3 hours

Departs: From London at 7pm Mon, Wed, Sat, Sun (Apr – Oct), Wed, Sat, Sun (Nov – Mar)

	Adult	Child 12-16 yrs
Walking Tour	\$63*	\$53*



SECRETS OF THE UNDERGROUND

Learn secrets of the evolution of 'The Tube' including the story behind 'Mind the Gap'. See disused 'ghost' stations such as Down Street through which Churchill travelled during the Blitz. A valid public transport ticket is required.

Duration: 2 hours 30 minutes

Departs: Tue, Thu, Sun from London at 1pm

	Adult	Child 3-16 yrs
Walking Tour	\$63*	\$53*



ROYAL LONDON TOUR

Begin with a drive around Parliament Square to see Westminster Abbey and Kensington Palace, then head to St James's Park and Buckingham Palace to see the Changing of the Guard.

Duration: 3 hours

Departs: Daily from London at 9am

	Adult	Child 3-16 yrs
Sightseeing Tour	\$105*	\$95*
With Thames Cruise	\$124*	\$114*



LONDON IN ONE DAY WITH RIVER CRUISE

Enjoy a full day tour of London. See Westminster Abbey and the Changing of the Guard, enjoy guided visits of St Paul's Cathedral and The Tower of London and relax aboard a River Thames cruise.

Duration: 8 hours

Departs: Daily from London at 9am

	Adult	Child 3-16 yrs
Sightseeing Tour	\$271*	\$250*



CROWN JEWELS WITH RIVER CRUISE

Join a tour with an expert Blue Badge Guide who will take you on a historical journey to two of London's most iconic landmarks. Following an afternoon of exploration, enjoy a scenic cruise on the River Thames.

Duration: 4 hours 30 minutes

Departs: Daily from London at 1pm

	Adult	Child 3-16 yrs
Sightseeing Tour	\$242*	\$221*



IT'S TIME TO BELIEVE IN MAGIC

Harry Potter

AND THE CURSED CHILD

PALACE THEATRE, LONDON

TM & © HPTP. HP™ WB.



RSC ROYAL SHAKESPEARE COMPANY

ROALD DAHL'S

Matilda

THE MUSICAL

BOOK DENNIS KELLY MUSIC & LYRICS TIM MINCHIN

#MatildaPose

CAMBRIDGE THEATRE, LONDON

ARTS COUNCIL ENGLAND Supported by public funding from ARTS COUNCIL ENGLAND



THE UNFORGETTABLE LIVE EXPERIENCE

WICKED

THE APOLLO VICTORIA THEATRE • LONDON

© WPL

LONDON TOURS



SEE LONDON BY NIGHT

When the sun goes down, London comes to life in a whole new way. Experience London's iconic sights beautifully lit up against the night sky on this magical night-time tour of the city by open-top bus.

Duration: 1 hour 30 minutes
Departs: Daily from London at 7:30pm

	Adult	Child 5-15 yrs
Sightseeing Tour	\$61*	\$34*



BICESTER VILLAGE SHOPPING EXPRESS

Indulge in a spot of retail therapy as you uncover a world of luxury at the UK's premier shopping destination. With the ease of return coach transfers, enjoy everything the Village has to offer with exclusive discounts on more than 150 fashion and boutique brands.

Duration: 9 hours
Departs: Daily from London at 9:30am

	Adult	Child 3-16 yrs
Shopping Tour	\$95*	\$74*



BUCKINGHAM PALACE & WINDSOR CASTLE

Experience two of Britain's finest Royal residences. Get a rare glimpse inside the King's official residence at Buckingham Palace before heading to the ancestral home of the monarchy at Windsor.

Duration: 9 hours 30 minutes
Departs: From London Thu to Mon at 9:15am (Limited season Jul – Sep)

	Adult	Child 3-16 yrs
Sightseeing Tour	\$263*	\$219*



ROYAL WINDSOR AFTERNOON TOUR

Visit a town steeped in centuries of royal tradition and heritage and discover over 900 years of royal history at Windsor Castle, the ancestral home of the British monarchy and scene of royal weddings.

Duration: 5 hours 30 minutes
Departs: From London at 1pm Thu to Mon (Apr – Oct), Mon, Thu, Sat (Nov – Mar)

	Adult	Child 3-16 yrs
Sightseeing Tour with Admission	\$145*	\$135*



WINDSOR, STONEHENGE & BATH

Visit Windsor Castle, home of the British monarchy for more than 900 years. Explore the beautiful Georgian city of Bath and its ancient Roman Baths, as well as uncover the mystery behind Stonehenge.

Duration: 11 hours 30 minutes
Departs: Daily from London at 8am
Other tour options are available.

	Adult	Child 3-16 yrs
Sightseeing Tour with Admissions	\$326*	\$336*



STONEHENGE & WINDSOR

Enjoy an immersive experience, with this tour. You'll have time to walk around the ancient Neolithic site and uncover the mystery of Stonehenge before heading to historic Windsor Castle. Explore the official residence of His Majesty The King and home of the British monarchy for more than 900 years.

Duration: 10 hours
Departs: Daily from London at 8:30am

	Adult	Child 3-16 yrs
Sightseeing Tour with Admissions	\$284*	\$263*



STONEHENGE & BATH

Visit Stonehenge and discover the mystery surrounding its construction over 5000 years ago. Then enjoy free time in Bath to explore at your leisure.

Duration: 11 hours
Departs: From London at 8:15am daily (Apr – Oct), Fri to Wed (Nov, Dec, Mar), Tue, Wed, Fri to Sun (Jan – Feb)

	Adult	Child 3-16 yrs
Sightseeing Tour	\$195*	\$175*
With Roman Baths Admission	\$263*	\$244*



DOWNTON ABBEY, OXFORD & BAMPTON

Visit Highclere Castle as seen in the Downton Abbey TV series, tour the castle's public areas including the main hall, library and sitting rooms. Enjoy time in Oxford and Bampton. Includes a copy of Lady Carnarvon's book.

Duration: 10 hours
Departs: From London at 8:15am, selected days (Apr – Aug)

	Adult	Child 3-16 yrs
Sightseeing Tour with Admissions	\$324*	\$304*



BLENHEIM, DOWNTON ABBEY VILLAGE & COTSWOLDS

Discover the charm of the Cotswolds. See beautiful Blenheim Palace, Sir Winston Churchill's home, as well as visiting some filming locations from 'Downton Abbey'.

Duration: 10 hours
Departs: From London at 9am, daily (Apr – Oct), Mon, Fri, Sun (Nov – Mar)

	Adult	Child 3-16 yrs
Sightseeing Tour	\$166*	\$145*
With Admissions	\$208*	\$187*



LUNCH IN THE COTSWOLDS

Discover this picturesque region, visiting Bibury, the 'prettiest village in the Cotswolds'. Relax over lunch at The Swan Hotel, a 17th century former coaching inn. In the afternoon return to London passing through a number of charming villages.

Duration: 10 hours
Departs: From London at 8:15am Tue, Wed, Fri, Sun (Apr – Oct), Tue, Fri, Sun (Nov – Mar)

	Adult	Child 3-16 yrs
Sightseeing Tour with Lunch	\$261*	\$242*



WARWICK CASTLE, SHAKESPEARE'S BIRTHPLACE & OXFORD

Discover over a thousand years of history at Warwick Castle. Visit the birthplace of William Shakespeare and then head to Oxford for a walking tour of the city.

Duration: 10 hours 30 minutes
Departs: From London at 8:30am, daily (Apr – Oct), Mon, Wed, Sat (Nov – Mar)

	Adult	Child 3-16 yrs
Sightseeing Tour	\$166*	\$156*
With Admissions	\$250*	\$229*



LEEDS CASTLE, CANTERBURY CATHEDRAL & DOVER

Journey to the county of Kent. Visit the stunning Leeds Castle, historic Canterbury Cathedral and see the spectacular White Cliffs of Dover.

Duration: 10 hours
Departs: From London at 9am, daily (Apr – Oct), Wed, Fri, Sat (Nov – Mar)

	Adult	Child 3-16 yrs
Sightseeing Tour	\$221*	\$200*
With Admissions	\$250*	\$229*



LIVERPOOL & THE BEATLES

Take a rail tour to the home of the Fab Four and join the Magical Mystery Tour, followed by a visit to the Cavern Club & The Beatles Story exhibition.

Duration: 11 hours
Departs: Mon to Sat from London at 7:30am
Overnight option available, refer page 28.

	Adult	Child 5-15 yrs
Standard Class	\$481*	\$460*
First Class	\$893*	\$872*



THE LAKE DISTRICT WITH CREAM TEA & CRUISE

Explore an area renowned for its breathtaking scenery, stunning natural beauty and quaint market towns. Enjoy a scenic cruise on Lake Windermere and a Cream Tea.

Duration: 10 hours
Departs: Mon to Sat from London at 8:30am
Overnight option available, refer page 28.

	Adult	Child 5-15 yrs
Standard Class	\$683*	\$662*
First Class	\$1103*	\$1082*



THE NORTH YORK MOORS WITH STEAM TRAIN

Explore the famous area of the North York Moors National Park and join the historic North York Moors Railway for a nostalgic steam journey to the popular seaside town of Whitby.

Duration: 14 hour 20 minutes
Departs: Mon to Sat from London at 6:15am (Apr – Oct)

	Adult	Child 5-15 yrs
Standard Class	\$473*	\$454*
First Class	\$725*	\$706*



EDINBURGH THE ROYAL CITY

Discover one of the most memorable and unique cities, Edinburgh. With return train travel, explore Edinburgh, wandering the narrow-cobbled alleyways of Old Town, visiting the 1100-year-old Edinburgh Castle and enjoying Hop-On Hop-Off tour.

Duration: 15 hours
Departs: Mon to Sat from London at 7am

	Adult	Child 5-15 yrs
Standard Class	\$525*	\$504*
First Class	\$756*	\$735*



PARIS WITH LUNCH AT EIFFEL TOWER & HOP-ON HOP-OFF

Enjoy a day tour to Paris. The tour includes return Eurostar travel, lunch at the Eiffel Tower's Madame Brasserie, a Hop-On Hop-Off bus pass and a cruise.

Duration: 14 hours 30 minutes
Departs: From London Mon to Fri at 5:30am, Sat at 5am

	Adult	Child 4-11 yrs
Eurostar Standard	\$838*	\$817*
Eurostar Plus	\$1321*	\$1300*



PARIS WITH LUNCH AT EIFFEL TOWER & CRUISE

Travel to Paris on Eurostar and join a panoramic tour before lunch at the Eiffel Tower's Madame Brasserie which is run by 2 Michelin star chef Thierry Marx. Next, enjoy a river cruise before returning to London.

Duration: 15 hours
Departs: From London at 6am Mon to Fri, Sat at 6:30am (seasonal variations may apply)

	Adult	Child 4-11 yrs
Eurostar Standard	\$735*	\$716*

LONDON PRIVATE TOURS



ROYAL LONDON

This fantastic half-day private tour provides the perfect introduction to London's major landmarks. See the best of London and learn the city's history with your private guide. See Buckingham Palace, Westminster Abbey, Big Ben and more as well as the opportunity watch the Changing of the Guard at Buckingham Palace or Horse Guard Parade.

Inclusions:

- Expert Blue Badge guide and separate chauffeur
- Travel by private luxury vehicle, Mercedes E-Class (1 to 2 people) or V-Class (3 to 6 people)
- Hotel pick-up and drop-off

Duration: 4 hours

Departs: On request from London at 9am

	1 to 2 People	3 to 6 People
Private Guide and Chauffeur	\$2126*	\$2238*



CROWN JEWELS OF LONDON

Take an historical journey through London. Get up close to two of its most iconic sights, St Paul's Cathedral and The Tower of London, as you are driven in style in a luxury vehicle. Your private guide will provide extensive commentary to ensure you get the most out of the visits.

Inclusions:

- Entry and guided tour of St Paul's Cathedral (except Sundays) and The Tower of London
- Expert Blue Badge guide and separate chauffeur
- Travel by private luxury vehicle, Mercedes E-Class (1 to 2 people) or V-Class (3 to 6 people)
- Hotel pick-up and drop-off

Duration: 4 hours 30 minutes

Departs: On request from London at 9am

	1 to 2 People	3 to 6 People
Private Guide and Chauffeur	\$2350*	\$3022*



LONDON IN ONE DAY

The most popular and comprehensive private tour of London. Spend the day exploring London's most iconic sights with your own private guide. In the morning enjoy a panoramic tour of the City of Westminster. See the exteriors of Buckingham Palace, Westminster Abbey plus the famous Changing of The Guard ceremony. In the afternoon visit the City of London and enjoy a guided tour of St Paul's Cathedral and entry to the Tower of London.

Inclusions:

- Entry and guided tour of St Paul's Cathedral (except Sundays) and The Tower of London
- Expert guide and separate chauffeur
- Travel by private luxury vehicle, Mercedes E-Class (1 to 2 people) or V-Class (3 to 6 people)
- Hotel pick-up and drop-off

Duration: 8 hours 30 minutes

Departs: On request from London at 9am

	1 to 2 People	3 to 6 People
Private Guide and Chauffeur	\$3582*	\$4478*



BATH & COTSWOLDS VILLAGE

During this full day private chauffeured experience, you will visit one of Britain's finest UNESCO World Heritage sites – The Roman Baths. This scenic tour of Bath provides an excellent introduction to the major sights of this beautiful city, including Pulteney Bridge, The Assembly Rooms and Bath Abbey. Next, experience the old world and charming historic villages of either Lacock or Castle Combe. Whichever you choose, you will be delighted, as each village bears its own identity.

Inclusions:

- Entry to the Roman Baths
- Travel by private luxury vehicle, Mercedes E-Class (1 to 2 people) or V-Class (3 to 6 people)
- Hotel pick-up and drop-off

Duration: 10 hours

Departs: On request from London at 8:30am

	1 to 2 People	3 to 6 People
Chauffeur/Guide	\$3358*	\$3806*
Private Guide and Chauffeur	\$4254*	\$5038*



ROYAL WINDSOR & STONEHENGE

On this full day private tour, over 900 years of royal history is waiting to be discovered at the home of the British monarchy. See the splendid State Apartments and site of the most famous royal wedding of recent times. Visit the ancient Neolithic site at Stonehenge and attempt to uncover the mystery behind its construction. Your guide will bring the 5000 year history of this fascinating monument to life.

Inclusions:

- Entry to Windsor Castle and Stonehenge
- Travel by private luxury vehicle, Mercedes E-Class (1 to 2 people) or V-Class (3 to 6 people)
- Hotel pick-up and drop-off

Duration: 11 hours

Departs: Thu to Mon from London at 8:30am

	1 to 2 People	3 to 6 People
Chauffeur/Guide	\$3926*	\$4362*
Private Guide and Chauffeur	\$5016*	\$5889*



HAMPTON COURT & WINDSOR CASTLE

Visit two of the UK's most beautiful and historic royal homes, Windsor Castle and Hampton Court Palace, on this fantastic full-day private tour. Learn all about the history with your private guide, who will bring the history of these two royal residences to life.

Inclusions:

- Private tour of Windsor Castle, Hampton Court Palace and the Gardens
- Travel by private luxury vehicle, Mercedes E-Class (1 to 2 people) or V-Class (3 to 6 people)
- Hotel pick-up and drop-off

Duration: 8 hours

Departs: Thu to Mon from London at 9am

	1 to 2 People	3 to 6 People
Chauffeur/Guide	\$2910*	\$3358*
Private Guide and Chauffeur	\$4030*	\$4926*

ALEXANDRA HOTEL



159-161 Sussex Gardens, London
MAP PAGE 16

From **\$157***[^]

- ❖ Perfect for budget conscious travellers
- ❖ Compact, neat and tidy rooms
- ❖ Close to recently upgraded Paddington Station

Includes continental breakfast daily and a 4 hour panoramic tour of London with River Thames cruise.

Location: In the heart of Paddington, within walking distance to Paddington and Lancaster Gate tube stations and just a 15 minute stroll to the lively shopping of Oxford Street. Nearest Underground: Paddington.

Property Features: Breakfast room, 24 hour reception, Luggage storage, Ironing services, Lift, 97 rooms.

Room Features: Heating, Fan, Cable TV, Tea/coffee making facilities, Hair dryer.

Max Capacity: Double/Twin – 2, Triple – 3, Quad – 4.

[^]Price applies to Sun-Thu nights. Minimum 3 night stay applies when staying a Fri and/or Sat night.



FREE

CARTWRIGHT GARDENS APARTMENTS



Standard Studio

36-37 Cartwright Gardens, London
MAP PAGE 16

From **\$237***

- ❖ Set in a Georgian-style building
- ❖ Access to guest laundry – perfect for longer stays
- ❖ Rooms feature combined living and sleeping area

Includes a 4 hour panoramic tour of London with River Thames cruise.

Location: Positioned on the fringes of the West End and only a short distance from the city in the heart of pretty Bloomsbury. Nearest Underground: Kings Cross.

Property Features: 24 hour reception, Guest lounge, Guest laundry, 100 rooms.

Room Features: Kitchen with microwave, Cable TV, DVD player, Ironing facilities, Hair dryer, Safe.

Max Capacity: Standard Studio/Large Studio – 2.



FREE

COMMODORE HOTEL



Executive

50-52 Lancaster Gate, London
MAP PAGE 16

From **\$504***[^]

- ❖ In beautiful Victorian townhouse building
- ❖ Room options to suit every traveller
- ❖ Many shops and restaurants nearby

Includes buffet breakfast daily and a 4 hour panoramic tour of London with River Thames cruise.

Location: Within a minute's walk of Hyde Park and close to Oxford Street. Nearest Underground: Lancaster Gate.

Property Features: Guest lounge, 24 hour reception, Lift, 88 rooms.

Room Features: Air-conditioning, Cable TV, Tea/coffee making facilities, Mini bar, Ironing facilities, Hair dryer, Safe.

Max Capacity: Executive – 3, Superior – 1, Suite – 2, Deluxe Family – 4.



FREE

K HOTEL KENSINGTON



131-137 Cromwell Road, London
MAP PAGE 16

From **\$420***[^]

- ❖ Contemporary guestrooms in a grand historic building
- ❖ Some rooms feature a private balcony

Includes buffet breakfast daily and a 4 hour panoramic tour of London with River Thames cruise.

Location: Centrally located in Kensington, less than a 20 minute walk from Hyde Park and many museums, Harrods and the famous shops of Knightsbridge. Nearest Underground: Gloucester Road.

Property Features: Breakfast room, Guest lounge, 24 hour reception, Luggage storage, Lift, 138 rooms.

Room Features: Air-conditioning, Balcony (some rooms), Cable TV, Tea/coffee making facilities, Ironing facilities (on request), Hair dryer, Safe.

Max Capacity: Standard – 4.



FREE

MY PLACE HOTEL



1-3 Trebovir Road, London
MAP PAGE 16

From **\$245***[^]

- ❖ Housed in an elegant Victorian townhouse
- ❖ Small, charming hotel on a quiet street
- ❖ Tranquil walled garden with seating areas

Includes a 4 hour panoramic tour of London with River Thames cruise.

Location: A stone's throw away from Earls Court Road with its many bars, restaurants and shops. Kensington High Street is also a short walk away. Nearest Underground: Earl's Court.

Property Features: Breakfast room, Garden, Lounge, Limited room service, 24 hour reception, Laundry/dry cleaning service, Luggage storage, Lift, 50 rooms.

Room Features: Fan, Cable TV, Mini fridge, Hair dryer, Safe.

Max Capacity: Double/Twin/Double Deluxe – 2, Triple – 3.



FREE

PHOENIX HOTEL



Standard

1-8 Kensington Garden Square, London
MAP PAGE 16

From **\$398***[^]

- ❖ Rooms to suit singles, couples and families
- ❖ Light breakfast served in the breakfast room
- ❖ Cosy lounge bar offering light snacks and drinks

Includes continental breakfast daily and a 4 hour panoramic tour of London with River Thames cruise.

Location: Situated in the centre of London and just a few minutes' walk from world famous Hyde Park. Nearest Underground: Bayswater.

Property Features: Breakfast room, Bar, 24 hour room service, Guest lounge, 24 hour reception, Laundry/dry cleaning service, Lift, Non smoking, 125 rooms.

Room Features: Fan, Cable TV, Tea/coffee making facilities, Hair dryer.

Max Capacity: Standard – 4, Executive – 2.

[^]Price applies to Sun-Fri nights. Minimum 2 night stay applies when staying a Sat night.



FREE

LONDON ACCOMMODATION

ST GILES LONDON



Classic



Urban

Bedford Avenue, London
MAP PAGE 16

From **\$167***

- ❖ Thoughtfully designed rooms with comfort in mind
- ❖ Some rooms feature views of London's skyline
- ❖ VQ Café offers 24 hour dining

Includes a 4 hour panoramic tour of London with River Thames Cruise.

Location: Perfectly located at the heart of London's West End and just off Tottenham Court Road, St Giles London hotel is the ideal place from which to explore the city. Walk to Oxford Street, Soho, the British Museum, Covent Garden, and other major attractions in Central London. Nearest Underground: Tottenham Court Road.

Property Features: Restaurants (2), Bar, Vending machines, 24 hour reception, Luggage storage, Lift, 725 rooms.

Room Features: Air-conditioning (some rooms), Seating area (Executive only), Flat screen TV, Mini fridge (upon request), Tea/coffee making facilities, Hair dryer, Safe.

Max Capacity: Classic/Urban/Superior/Executive/Signature – 2.



THE ROYAL NATIONAL HOTEL



Standard

Bedford Way, London
MAP PAGE 16

From **\$261*[^]**

- ❖ Classic pub meals and beers at London Pub
- ❖ Direct London Underground link with Heathrow Airport

Location: Located adjacent to Russell Square Gardens and only steps away from popular London landmarks. Nearest Underground: Russell Square.

Property Features: Restaurants (3), Bar, Room service, Laundry/dry cleaning service, 24 hour reception, Parking (extra charge), 1630 rooms.

Room Features: Tea/coffee making facilities, Cable TV, Hair dryer (on request), Ironing facilities (on request).

Max Capacity: Standard – 4.

[^]Price applies Sun-Thu nights.



44 CURZON STREET APARTMENTS BY MANSLEY



Studio

44 Curzon Street, London
MAP PAGE 16

From **\$597***

- ❖ Great for couples
- ❖ Compact kitchens and modern appliances
- ❖ Short walk to restaurants, art galleries and gardens

Location: Perfectly situated in the heart of Mayfair, close to London's famous landmarks and attractions. Nearest Underground: Green Park.

Property Features: Daytime reception services, Lift, 12 rooms.

Room Features: Apartments with separate living room and bedrooms (except studios), Kitchen with microwave, Nespresso machine, Cable TV, Ironing facilities, Bathrobe and slippers, Hair dryer.

Max Capacity: Studio/1 Bedroom – 2.



COLLINGHAM SERVICED APARTMENT



Studio

26-27 Collingham Gardens, London
MAP PAGE 16

From **\$792***

- ❖ Studio apartments have a private courtyard
- ❖ Great for families or extended stays
- ❖ Access to online meal delivery service

Includes a 4 hour panoramic tour of London with River Thames cruise.

Location: In one of London's most stunning neighbourhoods, close to Knightsbridge, Sloane Square and all the amazing museums of South Kensington. Nearest Underground: Earl's Court.

Property Features: 24 hour reception, Luggage storage, Lift, 26 rooms.

Room Features: Kitchenette (Studio). Fully equipped kitchen (Apartments), Smart TV, Washer/dryer, Ironing facilities, Hair dryer, Safe.

Max Capacity: Studio/One Bedroom – 2, Two Bedroom – 5, Three Bedroom – 7.



THE CLERMONT VICTORIA

◆◆◆◆



101 Buckingham Palace Road,
London MAP PAGE 16

From **\$471***

- ❖ Classic heritage hotel boasting Victorian architecture dating back to 1862
- ❖ Hypnos beds with Egyptian cotton bed linen

Includes a 4 hour panoramic tour of London with River Thames cruise.

Location: Perfectly positioned within walking distance to Buckingham Palace. Nearest Underground: Victoria.

Property Features: Restaurant, Bar, 24 hour room service, 24 hour reception, Laundry/dry cleaning service, Gym, Guest lounge, Lift, 348 rooms.

Room Features: Air-conditioning, Mini bar, Tea/coffee making facilities, Cable TV, Ironing facilities, Bathrobe and slippers, Hair dryer, Safe.

Max Capacity: Classic/Studio Suite – 3.



FREE

COPTHORNE TARA HOTEL

◆◆◆◆



Standard

Scarsdale Place, London
MAP PAGE 16

From **\$320*^**

- ❖ Quiet city location
- ❖ Spacious rooms with natural light and views
- ❖ Close to Kensington High Street shopping district

Includes breakfast daily and a 4 hour panoramic tour of London with River Thames Cruise.

Location: Set in prestigious Kensington, just a 3 minute walk from High Street Kensington, close to the iconic Royal Albert Hall and the beautiful Kensington Palace Gardens. Nearest Underground: High Street Kensington.

Property Features: Restaurants (2), Bars (3), Room service, 24 hour reception, 24 hour convenience store, Fitness centre, Lifts, 833 rooms.

Room Features: City views, Air-conditioning, Mini fridge, Tea/coffee making facilities, Cable TV, Safe.

Max Capacity: Standard – 4, Superior/Club – 3.

^Price applies to Sun-Thu nights.



FREE

THE GATE LONDON CITY

◆◆◆◆



41 White Church Lane, London
MAP PAGE 16

From **\$249***

- ❖ Outdoor terrace with views across the city
- ❖ Exclusive 5th Floor Lounge for guests
- ❖ State-of-the-art boutique gym

Includes a 4 hour panoramic tour of London with River Thames cruise.

Location: Situated a few minutes' walk from London's Aldgate East and Aldgate underground stations, The Gate stands as an iconic building at the gateway to the City of London. Nearest Underground: Aldgate East.

Property Features: Terrace, Breakfast room, Guest lounge, 24 hour reception, Gym, Lift 189 rooms.

Room Features: Air-conditioning, Kitchen facilities, TV, Washing machine (One Bedroom), Hair dryer, Safe.

Max Capacity: Studio/One Bedroom/Penthouse – 2, The Residence – 4.



FREE

GEM STRATHMORE HOTEL

◆◆◆◆



Superior

41 Queen's Gate Gardens, London
MAP PAGE 16

From **\$577***

- ❖ Housed in a fully restored Victorian mansion
- ❖ Enjoy a cocktail in the Glamis Bar
- ❖ Perfect base for exploring London

Includes a 4 hour panoramic tour of London with River Thames cruise.

Location: Close to Kensington Palace and Gardens, the Victoria and Albert Museum and Royal Albert Hall in South Kensington. Nearest Underground: Gloucester Road.

Property Features: Restaurant, Bar, 24 hour room service, 24 hour reception, Luggage storage, Lift, 77 rooms.

Room Features: LCD TV, Tea/coffee making facilities, Ironing facilities, Hair dryer, Safe.

Max Capacity: Superior – 4, Executive – 2.



FREE

GRAND PLAZA SERVICED APARTMENTS

◆◆◆◆



Studio

42 Princes Square, London
MAP PAGE 16

From **\$476***

- ❖ Picturesque location
- ❖ Set in a row of grand Victorian townhouses
- ❖ On-site restaurant serving Malaysian cuisine

Includes continental breakfast daily and a 4 hour panoramic tour of London with River Thames cruise.

Location: Situated in the heart of Bayswater, close to an array of restaurants and local pubs. Nearest Underground: Bayswater.

Property Features: Restaurant, 24 hour reception, Laundry service, Ironing service, Luggage storage, Lift, 198 rooms.

Room Features: Kitchenette, Tea/coffee making facilities, Cable TV, Safe.

Max Capacity: Studio/One Bedroom – 4, Family Apartment/Two Bedroom – 6.



FREE

LEONARDO ROYAL HOTEL LONDON TOWER BRIDGE

◆◆◆◆



45 Prescot Street, London
MAP PAGE 16

From **\$299***

- ❖ Unwind in the indoor heated swimming pool
- ❖ Indulge in ultimate relaxation at Rena Spa
- ❖ Leo's Restaurant offers modern British cuisine

Includes a 4 hour panoramic tour of London with River Thames cruise.

Location: Situated in the vibrant district of East London, within walking distance of the Tower of London and London Bridge. Nearest Underground: Tower Hill.

Property Features: Pool, Restaurant, Bar, Limited room service, 24 hour reception, Gym, Day spa, Laundry service, Luggage storage, Lift, 370 rooms.

Room Features: Air-conditioning, Flat screen TV, Tea/coffee making facilities, Hair dryer, Safe.

Max Capacity: Superior – 4, Executive/Studio – 2.



FREE

LONDON ACCOMMODATION

PRESIDENTIAL KENSINGTON SERVICED APARTMENTS



Standard Studio



Executive Studio

6-12 Barkston Gardens, London
MAP PAGE 16

From **\$372**^{**}

- ❖ Stylishly furnished, self-contained apartments
- ❖ Equipped with washing machine and dryer
- ❖ Multiple dining options nearby

Includes a 4 hour panoramic tour of London with River Thames cruise.

Location: Positioned in a quiet side street in South Kensington, close to Royal Albert Hall and Piccadilly. The property is surrounded by London's best shopping areas including Kensington High Street, Knightsbridge, Harrods, and fashionable Kings Road. Nearest Underground: Earls Court or Gloucester Road.

Property Features: Guest courtyard, 24 hour reception, Laundry service, Lift, 58 rooms.

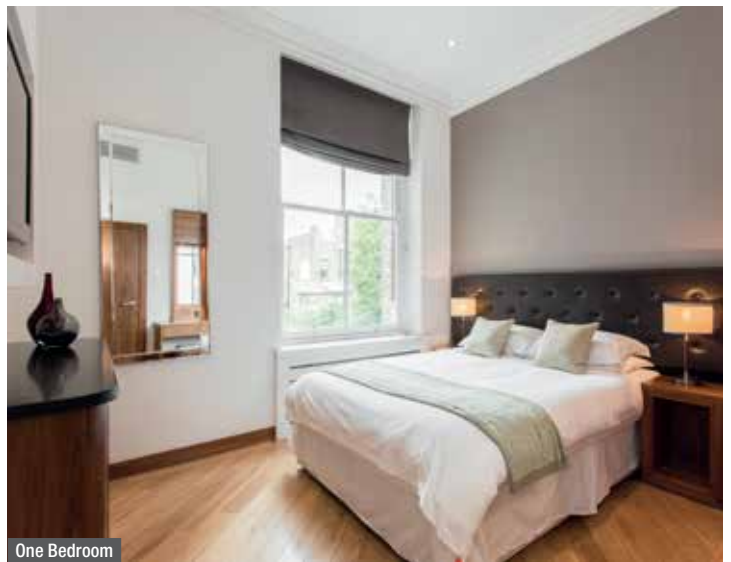
Room Features: Air-conditioning, Balcony/patio (some rooms), Kitchen with microwave and dishwasher, Tea/coffee making facilities, Cable TV, Washer/dryer, Hair dryer, Safe.

Max Capacity: Standard Studio – 2, Executive Studio/Deluxe Studio/One Bedroom – 3, Executive Suite/Deluxe Suite – 4.

[^]Price applies to Sun-Fri nights.



FREE



One Bedroom

THE MARBLE ARCH HOTEL BY THISTLE



Standard

Bryanston St, London
MAP PAGE 16

From **\$366**^{*}

- ❖ Mini bar with complimentary soft drinks
- ❖ Surrounded by shopping and dining options
- ❖ Close to Hyde Park and Buckingham Palace

Location: Perfectly positioned just moments from Oxford Street, the heart of London's shopping mecca, and only minutes walk to Marble Arch and Hyde Park. Nearest Underground: Marble Arch.

Property Features: Restaurant, Bar, Coffee shop, Limited room service, 24 hour reception, Gym, Laundry services, Lift, 692 rooms.

Room Features: Air-conditioning, Smart TV, Tea/coffee making facilities, Mini bar, Ironing facilities, Hair dryer.

Max Capacity: Standard – 2, Deluxe/Family – 3, Superior Apartment – 4.



FREE

NO.1 THE MANSIONS BY MANSLEY



Studio

219 Earls Court Road, London
MAP PAGE 16

From **\$499**^{*}

- ❖ Elegant mansion-style property
- ❖ Kitchens offer the flexibility of self-catering
- ❖ Perfect for families

Location: Ideally located in Earls Court with the city's major attractions and excellent shopping nearby. Nearest Underground: Earls Court.

Property Features: 24 hour reception, Luggage storage, Lift (limited floors), 24 rooms.

Room Features: Apartments with separate living room and bedrooms (except studios), Kitchen with microwave, Cable TV, Washer/dryer, Ironing facilities, Hair dryer.

Max Capacity: Studio – 2, 1 Bedroom – 4, 2 Bedroom – 6, 3 Bedroom – 7, 4 Bedroom – 8. Suites also available.



FREE

THE RESIDENT VICTORIA



Standard

10 Palace Place, London
MAP PAGE 16

From **\$307**^{*}

- ❖ Each room features a mini kitchen
- ❖ Resident Insiders, specially trained staff who are experts on the local area

Includes a 4 hour panoramic tour of London with River Thames cruise.

Location: Perfectly positioned in the centre of many of London's landmarks including Westminster Abbey and Big Ben. Nearest Underground: Victoria.

Property Features: Room service (breakfast only), Grocery service, 24 hour reception, Laundry/dry cleaning service, Lift, 73 rooms.

Room Features: Air-conditioning, Cable TV, Mini fridge, Microwave, Sink with filtered water tap, Nespresso coffee machine, Ironing facilities, Hair dryer, Bathrobe, Safe.

Max Capacity: Standard – 2, Superior – 3, Deluxe – 4.



FREE

*** FROM PRICES ARE A GUIDE ONLY**, subject to change and availability and are in Australian Dollars. Prices are per room per night for 2 people, unless otherwise specified and based on the lowest room category for travel in low season. For full terms and conditions, refer to the Booking Conditions on the inside back cover of this brochure.

STRAND PALACE HOTEL



372 The Strand, London
MAP PAGE 16

From **\$421***

- ❖ Enjoy a cocktail at **The Gin Palace**
- ❖ Modern British cuisine at **Haxells Restaurant and Bar**

Includes a 4 hour panoramic tour of London with River Thames cruise.

Location: Surrounded by the best London has to offer, with South Bank, Covent Garden and the West End all close by. Nearest Underground: Covent Garden.

Property Features: Restaurant, Bars (2), 24 hour room service, Fitness centre, Laundry/dry cleaning service, 24 hour reception, Non smoking, Lift, 788 rooms.

Room Features: Air-conditioning, Cable TV, Tea/coffee making facilities, Ironing facilities, Hair dryer, Safe.

Max Capacity: Classic/Superior – 2, Deluxe Studio – 3.



THISTLE HYDE PARK KENSINGTON GARDENS



Standard

104 Bayswater Road, London
MAP PAGE 16

From **\$282***

- ❖ Leafy location, adjacent to **Kensington Gardens**
- ❖ Restaurant serves **British and European dishes**
- ❖ Some rooms offer views of **Hyde Park**

Location: Situated across the road from Hyde Park and only minutes from the West End, Marble Arch and Oxford Street. Nearest Underground: Bayswater or Queensway.

Property Features: Restaurant, Bar, 24 hour room service, 24 hour reception, Laundry/dry cleaning service, Parking (security – extra charge), Lifts, 175 rooms.

Room Features: Air-conditioning, Cable TV, Mini bar, Tea/coffee making facilities, Ironing facilities, Hair dryer, Safe.

Max Capacity: Standard/Deluxe – 2, Family – 3.



THE TOWER HOTEL BY THISTLE



St Katharine's Way, London
MAP PAGE 16

From **\$289***

- ❖ Some rooms offer views of **Tower Bridge**
- ❖ Afternoon Tea served overlooking **Tower Bridge**
- ❖ **The Lawn** is a great place for a drink

Location: Situated on the River Thames, adjacent to Tower Bridge and amid some of London's most iconic landmarks. Nearest Underground: Tower Hill.

Property Features: Restaurant, Bars (2), 24 hour room service, 24 hour reception, Gym, Laundry/dry cleaning service, Parking (extra charge), 801 rooms.

Room Features: Air-conditioning, Smart TV, Mini fridge, Tea/coffee making facilities, Ironing facilities, Hair dryer, Safe.

Max Capacity: Standard/Executive Tower Bridge View – 2, Family/Suite – 3.



THE WELLINGTON BY BLUE ORCHID



Superior

71 Vincent Square, London
MAP PAGE 16

From **\$399***

- ❖ Prime location near major London landmarks
- ❖ The property features private gardens and terraces
- ❖ 24 hour gym access and room service

Includes a 4 hour panoramic tour of London with River Thames cruise.

Location: Nestled in a tranquil Westminster enclave on leafy Vincent Square, within easy reach of Buckingham Palace and St James's Park. Nearest Underground: Victoria.

Property Features: Restaurant, Bar, 24 hour room service, 24 hour reception, Gym, Luggage storage, Lift, 160 rooms.

Room Features: Air-conditioning, Flatscreen TV, Tea/coffee making facilities, Ironing facilities, Hair dryer, Safe.

Max Capacity: Superior/Executive – 2, One Bedroom Apartment/Family – 4.



THE BILTMORE MAYFAIR



Deluxe

44 Grosvenor Square, London
MAP PAGE 16

From **\$999***

- ❖ Sophisticated retreat in the heart of London
- ❖ Fitness Suite available 24 hours
- ❖ Enjoy afternoon tea in the Tea Lounge

Includes a 4 hour panoramic tour of London with River Thames cruise.

Location: In the heart of Mayfair, close to shopping and Hyde Park. Nearest Underground: Marble Arch.

Property Features: Restaurant, Bars (3), 24 hour room service, 24 hour reception, Fitness centre, Luggage storage, Lift, 307 rooms.

Room Features: Air-conditioning, Smart TV, Mini bar, Tea/coffee making facilities, Ironing facilities, Bathrobes and slippers, Hair dryer, Safe.

Max Capacity: Deluxe/King Deluxe Grosvenor Square View/Junior Suite – 2, King Grand Deluxe – 3.



TOWER SUITES BY BLUE ORCHID



Superior Studio

100 Minories, London
MAP PAGE 16

From **\$399***

- ❖ Offering sweeping views over the **River Thames** and the **Tower of London**
- ❖ Beautifully appointed studios and suites

Includes a 4 hour panoramic tour of London with River Thames cruise.

Location: In the heart of the city's famous business district, looking over the River Thames and Tower Bridge. Nearest Underground: Tower Hill.

Property Features: Restaurant, Bar, 24 hour room service, 24 hour reception, Fitness centre, Lift, 273 rooms.

Room Features: Air-conditioning, Kitchen (apartments), Ironing facilities, Hair dryer, Bathrobes, Safe.

Max Capacity: Superior Studio/Executive Studio/Superior Suite – 2, Executive Suite/One Bedroom Apartment/Signature Suite – 4.



REGIONAL ENGLAND ACCOMMODATION

THE CIRCLE GREAT BRITAIN (BED & BREAKFAST ACCOMMODATION)



Pendennis Guest House, Penzance



Isla Bank House, Keith

The Circle Bed & Breakfast features over 700 independently-owned, accommodation options across the UK, with each unique property offering great hospitality, a warm welcome and good food. When exploring the UK, you will find the perfect base – a home away from home in beautiful surroundings, to suit your every need. Pre-book your accommodation to ensure that you can make the most of every day.

The bed and breakfast collection offers a range of options from working farms and former vicarages to Victorian town houses and much more. Whether a small B&B or a family home, these properties have been chosen for their character, charm and individuality and the friendly welcome you will receive.

The hotels and inns are situated across some of the most picturesque places in England, Scotland and Wales. Each property boasts comfortable accommodation and ensuite facilities with traditional and home cooked meals. With eight categories of accommodation to choose from, there is sure to be the perfect hotel or inn to suit every budget.

Includes full breakfast daily.

	Adult	Child 0-12 yrs
Category 1	\$140* [^]	\$49* [^]
Category 2	\$168* [^]	\$49* [^]
Category 3	\$196* [^]	\$49* [^]
Category 4	\$224* [^]	\$49* [^]
Category 5	\$252* [^]	\$49* [^]
Category 6	\$280* [^]	\$49* [^]
Category 7	\$308* [^]	\$49* [^]
Category 8	\$336* [^]	\$49* [^]

[^]Prices are per person per night. Child pricing is based on sharing with adult(s) and is per child per night. Location surcharges may apply. Please ask your travel agent for details.

HOTEL INDIGO BATH ◆◆◆◆



2-8 South Parade, Bath

From **\$535***[^]

- ❖ In a stunning Grade I listed building
- ❖ Stylish rooms inspired by the local neighbourhood
- ❖ Elder Restaurant has a 'field to fork' philosophy

Includes breakfast daily and complimentary soft drinks in mini bar.

Location: Set on a peaceful street, just steps away from the centre of Bath and local attractions. Distances: Roman Baths 350m.

Property Features: Restaurant, Bar, Lounge, Room service, 24 hour reception, Gym, Laundry services, Parking (extra charge), 166 rooms.

Room Features: Air-conditioning, Mini bar, Tea/coffee making facilities, Hair dryer, Safe.

Max Capacity: Superior – 2.

[^]Price applies to Sun-Thu nights.



CLAYTON HOTEL CAMBRIDGE ◆◆◆◆



Standard

27-29 Station Road, Cambridge

From **\$334***[^]

- ❖ Enjoy a traditional Afternoon tea
- ❖ Bright and spacious rooms that have been designed with relaxation in mind

Includes full English breakfast daily.

Location: Situated between Cambridge train station and the beautiful Botanic Gardens, just a short walk from the city centre. Distances: City centre 1km.

Property Features: Restaurant, Bar, 24 hour room service, 24 hour reception, Gym, Laundry/dry cleaning service, Parking (extra charge), 160 rooms.

Room Features: Air-conditioning, Smart TV with Chromecast, Tea/coffee making facilities, Ironing facilities, Hair dryer, Safe.

Max Capacity: Standard – 3.

[^]Price applies to Sun nights.



CRESCENT PLACE BY MANSLEY ◆◆◆◆



Standard

1A Crescent Place, Cheltenham

From **\$227***[^]

- ❖ Grade II listed building, dating back to 1855
- ❖ Unique blend of heritage and modern luxury
- ❖ Perfect home-away-from-home experience

Location: Just moments from the Cheltenham town centre; a perfect base from which to explore the Cotswolds and beyond. Distances: City centre 180m.

Property Features: Daytime reception services, Parking (extra charge), 14 rooms.

Room Features: Air conditioning, Nespresso machine, Compact kitchenette, TV with Chromecast, Garment steamer, Bathrobe and slippers, Hair dryer.

Max Capacity: Standard/Superior/Deluxe Suite/Luxury Suite – 2.



THE RESIDENT LIVERPOOL

◆◆◆◆



29 Seel St, Liverpool

From **\$135***[^]

- ◆ Some rooms feature a mini kitchen
- ◆ Resident Insiders, specially trained staff who are experts on the local area

Location: In the heart of the fashionable Ropewalks district, a short walk from the city's main railway station and top attractions. Distances: Albert Dock 1.1km.

Property Features: Grocery service, 24 hour reception, Laundry/dry cleaning service, Lift, 106 rooms.

Room Features: Air-conditioning, Mini fridge, Microwave, Nespresso machine, Hair dryer, Bathrobe, Safe.

Max Capacity: Standard – 2, Superior – 3, Deluxe/Junior Suite – 4.

[^]Mandatory City Visitor Charge of GBP2.40 per room per night to be paid directly to the hotel.



COPTHORNE MANCHESTER SALFORD QUAYS

◆◆◆◆



Standard

Clippers Quay Salford, Manchester

From **\$123***[^]

- ◆ Opposite the Exchange Quay Metrolink tram stop
- ◆ Some rooms overlook the water
- ◆ Dine with a view at Clippers Brasserie

Location: Situated on the waterfront in the heart of the Salford Quays area, with world-class attractions, extensive shopping and vibrant nightlife on its doorstep. Distances: City Centre 6.5km.

Property Features: Restaurant, Bar, 24 hour room service, 24 hour reception, Laundry services, Parking (free), 166 rooms.

Room Features: Mini bar, TV, Tea/coffee making facilities, Ironing facilities, Bathrobes, Hair dryer, Safe.

Max Capacity: Standard/Club – 3.



COPTHORNE HOTEL NEWCASTLE

◆◆◆◆



The Close Quayside, Newcastle upon Tyne

From **\$137***[^]

- ◆ Outdoor terrace offers panoramic river views
- ◆ Close to Newcastle Train Station
- ◆ Interconnecting rooms available

Location: In Newcastle Quayside right in the heart of vibrant Newcastle, this is the perfect base from which to explore. Distances: City Centre 1.5km.

Property Features: Restaurant, Bar, 24 hour reception, Gym, Laundry services, Parking (free), 156 rooms.

Room Features: Air-conditioning, Satellite TV, Tea/coffee making facilities, Mini fridge, Ironing facilities, Hair dryer, Safe.

Max Capacity: Standard/Club/Executive Suite – 2.



LEONARDO HOTEL SOUTHAMPTON

◆◆◆◆



Standard

Charlotte Place, Southampton

From **\$135***[^]

- ◆ City centre location overlooking East Park
- ◆ Seasonal menu served at the hotel restaurant
- ◆ Spacious rooms with comfortable beds

Location: Situated in the heart of the city, close to the City Art Gallery and shopping at Westquay. Distances: Cruise Terminal 2.1km.

Property Features: Restaurant, Bar, 24 hour room service, 24 hour reception, Laundry/dry cleaning service, Lift, 270 rooms.

Room Features: Air-conditioning, Cable TV, Tea/coffee making facilities, Pillow menu, Ironing facilities, Hair dryer.

Max Capacity: Standard/Superior – 3.



MACDONALD ALVESTON MANOR, STRATFORD-UPON-AVON

◆◆◆◆



Clopton Bridge, Stratford-upon-Avon

From **\$418***[^]

- ◆ Set in landscaped private gardens
- ◆ Traditional Tudor house charm
- ◆ Fine dining experience at Manor Restaurant

Includes full breakfast daily.

Location: Set in the heart of Shakespeare Country and close to pretty Cotswolds villages. Distances: Shakespeare's Birthplace 850m.

Property Features: Pool (heated indoor), Restaurant, Bar, 24 hour room service, Guest lounge, Day spa, Gym, 113 rooms.

Room Features: Air-conditioning, Tea/coffee making facilities, Ironing facilities, Hair dryer.

Max Capacity: Standard/Deluxe/Deluxe Suite – 2, Family – 3.

[^]Price applies to Sun-Thu nights.



HOLIDAY INN YORK CITY CENTRE

◆◆◆◆



Standard

53 Piccadilly, York

From **\$451***[^]

- ◆ Enjoy selection of exclusive gins and craft beers in the bar
- ◆ Inside the city walls, a perfect base to explore York

Includes breakfast daily.

Location: Situated within the city walls, providing convenient access to York's historic centre, and popular landmarks like the Jorvik Viking Centre and the Shambles. Distances: The Shambles 600m.

Property Features: Restaurant, Bar, 24 hour room service, 24 hour reception, Fitness centre, Laundry/dry cleaning service, Luggage storage, Lift, 100 rooms.

Room Features: Air-conditioning, Flatscreen TV, Tea/coffee making facilities, Ironing facilities, Hair dryer, Safe.

Max Capacity: Standard/Premium – 2.

[^]Price applies to Sun-Thu nights.



ENGLAND TOURING



York Minster, York



YORK BY RAIL 2 DAYS

Day 1: London to York

Travel to York by train from central London in just two hours. On arrival, start exploring the city with your included Hop-On Hop-Off bus ticket.

There are lots of great places to hop off, but a great place to start is Shambles. Full of medieval buildings, in places this incredible narrow street seems to be falling in on itself. It's no surprise that it's said to be the inspiration for Harry Potter's Diagon Alley! Other great options include Clifford's Tower at York Castle, Walmgate Bar,

the Museum Gardens on the banks of the River Ouse, the fascinating Viking museum, the Jorvik Centre, and of course York Minster. Stay overnight in York.

Day 2: York to London (B)

Today is at your leisure until the early evening, when you will return to London where the tour ends.

(B = breakfast)

From **\$733*** per person twin share

2 DAYS | LONDON TO LONDON

TRAVEL TYPE: Independent rail

DEPARTS: Daily

HIGHLIGHTS

- Visit one of England's most historic cities
- See the beautiful York Minster
- Wander Shambles, one of the best-preserved medieval shopping streets in Europe

INCLUDES

- 1 night 3 star hotel accommodation
- Meals as specified
- Hop-On Hop-Off sightseeing bus tour of York
- Return standard class rail tickets from London to York

First Class rail option is also available.



The Beatles Statue, Liverpool



LIVERPOOL & THE BEATLES 2 DAYS

Day 1: London to Liverpool

After a short train journey from London's Euston Station, arrive at Liverpool Lime Street - the gateway to the city of Liverpool which is also the home of The Beatles.

Begin exploring the waterfront, a UNESCO World Heritage Site, from the Albert Dock and up through the historic commercial district. Visit the award-winning The Beatles Story, where you can explore the life and times of the Fab Four.

In the afternoon, see the locations of the childhood homes, schools and birthplaces of The Beatles on

the Magical Mystery Tour. You'll also see places that inspired some of their greatest hits, including Penny Lane and Strawberry Fields.

Your day ends at The Cavern Club, the most famous music club in the world and where it all began for The Beatles. This legendary cellar has played a role in every era of music. Enjoy an overnight stay in Liverpool.

Day 2: Liverpool to London (B)

Today is at your leisure until the early evening, when you will return to London where the tour ends.

(B = breakfast)

From **\$945**** per person twin share

2 DAYS | LONDON TO LONDON

TRAVEL TYPE: Independent rail

DEPARTS: Monday to Friday

HIGHLIGHTS

- Entry to The Beatles Story Exhibition
- Free time to explore Liverpool
- The Beatles 'Magical Mystery Tour'

INCLUDES

- 1 night 4 star hotel accommodation
- Meals as specified
- Guided 'Magical Mystery' tour of Liverpool
- Entry to The Beatles Story Exhibition
- Entry to the famous Cavern Club
- Information pack and free city map
- Return standard class rail tickets from London to Liverpool

^ Mandatory City Visitor Charge of GBP2.40 per room per night to be paid directly to the hotel. First Class rail option also available.



Lake Windermere, Lake District



THE LAKE DISTRICT 2 DAYS

Day 1: London to Lake District

Make your own way to London Euston Station for a rail journey to the Lake District, an area that inspired many of Beatrix Potter's tales. Gaze out the window as you pass through the calming English countryside with its rolling hills and rural landscapes.

Upon arrival in Oxenholme, meet your local guide for a tour through the quaint and artsy Lake District. Travel to the charming medieval village of Hawkshead where you'll have time to explore. Next, venture into the heart of the Lake District taking in the incredible scenery along the way. Visit the Langdale Valley and Blea Tarn before arriving at Waterhead where you will board a boat for

a scenic cruise across Lake Windermere. Sit back and take in breathtaking views of the peaceful Lakeland Fells as you glide along toward Bowness Bay.

Complete this enchanting experience in a truly British way, with traditional Cream Tea at the Lindeth Howe Country House Hotel, which was once owned by Beatrix Potter herself. Enjoy an overnight stay in Windermere.

Day 2: Lake District to London (B)

Today is at your leisure until the early evening, when you will return to London where the tour ends.

(B = breakfast)

From **\$1154*** per person twin share

2 DAYS | LONDON TO LONDON

TRAVEL TYPE: Independent rail

DEPARTS: Monday to Friday

HIGHLIGHTS

- Spectacular Lake District scenery
- Visit medieval Hawkshead village
- Enjoy an English Cream Tea
- Scenic cruise on Lake Windermere

INCLUDES

- 1 night 4 star hotel accommodation
- Meals as specified
- Panoramic tour of the Lake District
- Cruise on Lake Windermere
- English Cream Tea
- Information pack
- Services of local guide
- Return standard class rail tickets from London to Oxenholme



St George's Chapel, Windsor

ENGLAND'S GREAT WEST WAY® 5 DAYS

LONDON – WINDSOR – SALISBURY – BATH – SWINDON – LONDON

Day 1: London to Windsor

Arrive into London and pick up your rental car. Continue to the Windsor area to start exploring the Great West Way. If time allows, enjoy a Hop-On, Hop-Off sightseeing tour of Windsor and Eton. Alternatively, visit Windsor Castle. Overnight in Windsor.

Day 2: Windsor to Salisbury (B)

Continue your exploration of the Great West Way. You may choose to stop at Bombay Sapphire Distillery to learn about gin making. Just south of the Great West Way, visit prehistoric Stonehenge, part of a UNESCO World Heritage Site, before continuing to Salisbury. Take a walk around this picturesque market town and visit Salisbury Cathedral. Overnight in Salisbury.

Day 3: Salisbury to Bath (B)

Today travel straight to Bath to experience this heritage city. Alternatively, leave the Great West Way and discover Somerset area, with the cathedral city of Wells and the town of Glastonbury. The dramatic scenery of Cheddar Gorge with its awe-inspiring cliffs and

extraordinary subterranean stalactite show caves are not to be missed. While in Cheddar, be sure to sample their cheese and visit a cider farm. Continue to Bath to re-join the Great West Way. Overnight in Bath.

Day 4: Bath to Swindon (B)

This morning, walk around Bath, one of the most beautiful cities in England and visit the historic Roman Baths. Head east and stop at one of the many pretty Cotswolds villages in the area, such as Castle Combe and Lacock. Or stop in Avebury, a small village within a standing stone circle, part of a UNESCO World Heritage Site together with Stonehenge. Overnight in Swindon.

Day 5: Swindon to London (B)

Depart for London and consider visiting RHS Garden Wisley. This world-class garden with its stunning 12-metre high cathedral-like Glasshouse is not to be missed. Travel to London where you will return your car.

(B = breakfast)

From **\$1232**** per person twin share

5 DAYS | LONDON TO LONDON

TRAVEL TYPE: Self drive

DEPARTS: Daily

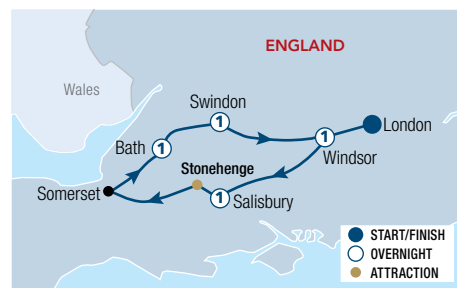
HIGHLIGHTS

- Windsor Castle
- Bombay Sapphire Distillery
- Prehistoric Stonehenge
- Roman Baths
- Cheddar Gorge
- Glastonbury
- Castle Combe

INCLUDES

- 4 nights 3 star hotel accommodation
- Meals as specified
- Admissions to Stonehenge and The Roman Baths
- Local taxes and service charges

^ Does not include rental car or associated costs. Refer to page 10 for vehicle rental details. Suggested tours and admissions to sites and castles are not included, unless otherwise specified. 4 star accommodation prices also available.



Shambles, York

LONDON, YORK & EDINBURGH BY RAIL 7 DAYS

LONDON – YORK – EDINBURGH

Day 1: London

Arrive in London and make your way to your hotel. Enjoy the remainder of the day at leisure and begin to explore this amazing city. Spend the next two nights in London.

Day 2: London (B)

Today visit the Tower of London and then continue to discover London at your leisure. Visit famous Harrods, enjoy afternoon tea at an iconic hotel or ride the London Eye.

Day 3: London to York (B)

Travel by rail from London to York. On arrival in York, make your own way to the hotel. Explore York on your own, as you walk beside the town walls and medieval lanes. Stroll down Shambles, with its overhanging timber framed buildings. Visit magnificent York Minster, the largest gothic cathedral in Great Britain. Spend the next two nights in York.

Day 4: York (B)

Today is free to explore more of York at your leisure.

Day 5: York to Edinburgh (B)

This morning board the train to Waverley Station in Edinburgh. Sit back and enjoy one of the most scenic train journeys in Great Britain as the train follows the Northumberland coast, crossing the border into Scotland. On arrival in Edinburgh make your way to your hotel. Explore the beautiful capital city of Scotland. Spend the next two nights in Edinburgh.

Day 6: Edinburgh (B)

Continue your exploration of the city. See the Georgian mansions in the New Town, before discovering the Old Town district. Head to Leith and see Royal Yacht Britannia or visit the Port of Leith Distillery. Visit Edinburgh Castle, situated on top of an extinct volcano with stunning views of the city.

Day 7: Edinburgh (B)

Your tour concludes after breakfast.

(B = breakfast)

From **\$1846*** per person twin share

7 DAYS | LONDON TO EDINBURGH

TRAVEL TYPE: Independent rail

DEPARTS: Daily

HIGHLIGHTS

- See the Crown Jewels at the Tower of London
- Wander the narrow cobblestones of Shambles
- Discover Edinburgh Castle and The Royal Mile

INCLUDES

- 6 nights 3 star accommodation
- Meals as specified
- Admissions to Tower of London and Edinburgh Castle
- One way standard class rail tickets from London to York and York to Edinburgh

Suggested tours and admissions to sites and castles are not included, unless otherwise specified. 4 star accommodation prices also available.



*** FROM PRICES ARE A GUIDE ONLY.** subject to change and availability and are in Australian Dollars. Prices are per person twin share, unless otherwise specified and based on the lowest room category and travel in low season. For full terms and conditions, refer to the Booking Conditions on the inside back cover of this brochure.

ENGLAND TOURING



LONDON AND BATH RAIL TOUR 7 DAYS

LONDON – BATH – LONDON

Day 1: London

Arrive at London Heathrow and enjoy a private transfer to your hotel. Spend the remainder of the day getting acquainted with the city, perhaps adding on a sumptuous afternoon tea. Stay three nights in London.

Day 2: London (B)

Explore London with the help of your Hop-On Hop-Off ticket. See famous locations such as Westminster Abbey, Buckingham Palace, and the Tower of London.

Day 3: London (B)

Today, join a coach tour into the English countryside to visit three quintessentially British locations. Visit Windsor, a charming city famous for its castle, followed by Stonehenge. Your trip will conclude with a stop in Oxford, a university town and site of many TV dramas.

Day 4: London to Bath (B)

Make your way to Paddington station to board a direct train service to the historic city of Bath. There are many sites to visit such as Bath Abbey, Mary Shelley's Frankenstein Museum and the Jane Austen Centre. Alternatively, take a Bridgerton Walking Tour or relax in

the healing waters of Thermae Spa. Be sure to stop in at Circo Bar for an evening cocktail. Spend the next two nights in Bath.

Day 5: Bath (B)

Today use your Hop-On Hop-Off ticket to explore the city a little further and marvel at the Georgian architecture. A visit to the world-famous Roman Baths is included. Afternoon tea at the Pump Room would be a lovely way to round off your time in Bath.

Day 6: Bath to London (B)

Today you will return to London by rail where you have a final chance to tick off some more of those must-see attractions. Why not add in a show or musical to complete your London experience. Overnight in London.

Day 7: London (B)

Enjoy a private transfer back to London Heathrow airport or extend your stay to enjoy another part of the UK.

(B = breakfast)

From **\$3341*** per person twin share

7 DAYS | LONDON TO LONDON

TRAVEL TYPE: Independent rail

DEPARTS: Daily

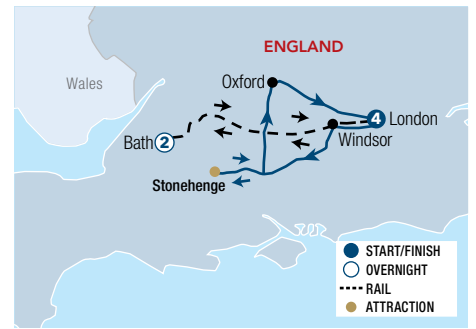
HIGHLIGHTS

- See the prehistoric Stonehenge
- Discover Windsor Castle
- Visit the historic Roman Baths

INCLUDES

- 6 nights 3 and 4 star accommodation
- Meals as specified
- Day tour to Windsor, Stonehenge & Oxford from London
- 1 Day Hop-On Hop-Off Tickets in London and Bath
- Admissions to Romans Baths
- Return standard class rail tickets from London to Bath
- Return transfers from London Heathrow to hotel

Suggested tours and admissions to sites and castles are not included, unless otherwise specified.



SOUTH ENGLAND & CORNWALL 8 DAYS

LONDON – SOUTHAMPTON – EXETER – FALMOUTH – BARNSTAPLE – BATH – LONDON

Day 1: London to Southampton

Pick up your rental car and head south west through the beautiful English countryside. Visit the pre-historic Stonehenge and walk through the medieval streets of Salisbury. Overnight in Southampton.

Day 2: Southampton to Exeter (B)

Drive along the south coast and stop at Lulworth Cove which is part of the 'Jurassic Coast'. Consider taking a cruise before continuing along the coast. Spend the night in Exeter.

Day 3: Exeter to Falmouth (B)

Head to wild Dartmoor National Park and admire the rocky outcrops and expansive moorland. Explore the many villages with their thatched cottages and cosy tea rooms. Visit one of Cornwall's famous gardens. Spend the next two nights in Falmouth.

Day 4: Falmouth (B)

Enjoy a full day exploring Cornwall and marvel at the picturesque coastline, fishing villages and rolling countryside. Head for the harbour town of St Ives and visit the renowned Tate Art Gallery. Try a Cornish pasty, before travelling along the coast to Land's End. Drive back along the coast to see St Michael's Mount.

Day 5: Falmouth to Barnstaple (B)

Travel to Padstow and be sure you sample their famous fish and chips. Cross Bodmin Moor, before arriving at Barnstaple where you will spend two nights.

Day 6: Barnstaple (B)

Spend the day at leisure exploring the north Devon Coast. Head west to Clovelly, a pretty fishing village clinging to the side of a cliff. Alternatively, journey east and explore Exmoor National Park.

Day 7: Barnstaple to Bath (B)

Depart Devon and drive north into Somerset. Travel through Cheddar Gorge and visit the village of Cheddar to sample some of their famous cheese. Stop at the town of Glastonbury or visit a cider farm. Travel on to Bath, a UNESCO World Heritage Site and visit the Roman Baths and use your Hop-On Hop-Off Ticket in explore the city. Overnight in Bath.

Day 8: Bath to London (B)

Journey to Lacock, a picturesque village, before travelling through the idyllic scenery of the Cotswolds. Stop at Castle Combe, one of the prettiest villages in England. Arrive back into London to return your car.

(B = breakfast)

From **\$1825**^** per person twin share

8 DAYS | LONDON TO LONDON

TRAVEL TYPE: Self drive

DEPARTS: Daily

HIGHLIGHTS

- Prehistoric Stonehenge
- The Jurassic Coast
- Dartmoor National Park
- St Michael's Mount
- Roman Baths
- Cheddar Gorge
- Glastonbury

INCLUDES

- 7 nights 3 star hotel accommodation
- Meals as specified
- Admissions to Stonehenge and Roman Baths
- 1 Day Hop-On Hop-Off Ticket in Bath
- Local taxes and service charges

^ Does not include rental car or associated costs. Refer to page 10 for vehicle rental details. Suggested tours and admissions to sites and castles are not included, unless otherwise specified. 4 star accommodation prices also available.





St. Michael's Mount

DEVON AND CORNWALL RAIL CIRCUIT 8 DAYS

LONDON – PORTSMOUTH – TORQUAY – PENZANCE – PLYMOUTH – BRISTOL – LONDON

Day 1: London

Arrive in London and make your way to your hotel. Enjoy the remainder of the day at leisure. Overnight in London.

Day 2: London to Portsmouth (B)

Take a train to Portsmouth. Explore Portsmouth's historic dockyard, stroll Gunwharf Quays and dine by the waterfront. Spend the night in Portsmouth.

Day 3: Portsmouth to Torquay (B)

Depart for Torquay by train. On arrival, enjoy the beautiful beaches and charming streets of the English Riviera. Visit attractions like Kents Cavern or take a scenic coastal walk. Spend two nights in Torquay.

Day 4: Torquay (B)

Spend the day discovering Torquay's delights. Explore the historic town, relax on the beach, or visit local sites, soaking up the wonderful seaside ambiance.

Day 5: Torquay to Penzance (B)

Travel by train to Penzance. Visit the enchanting St. Michael's Mount, exploring its castle and gardens. Spend the evening in Penzance.

Day 6: Penzance to Plymouth (B)

Head to Plymouth and explore the historic Barbican and Plymouth Hoe. Consider a ride the Dartmouth Steam Railway for a nostalgic trip to Dartmouth. Enjoy local dining before retiring for the night in Plymouth.

Day 7: Plymouth to Bristol (B)

After your breakfast, take a train to Bristol. Visit Brunel's SS Great Britain and consider taking a Banksy Graffiti Tour to see the city's famous street art. Brunel fans might wish to dine at Goram & Vincent at Avon Gorge by Hotel du Vin overlooking Brunel's Clifton Suspension Bridge. Stay overnight in Bristol.

Day 8: Bristol to London (B)

Depart Bristol for London where the tour ends on arrival.

(B = breakfast)

From **\$2854*** per person twin share

8 DAYS | LONDON TO LONDON

TRAVEL TYPE: Independent rail

DEPARTS: Daily

HIGHLIGHTS

- Learn about Brunel's SS Great Britain's Australian connection
- Explore Bristol's street artwork and see one of Banksy's earliest works; Mild Mild West
- Visit St Michael's Mount (optional)
- Discover picturesque villages

INCLUDES

- 7 nights 3 and 4 star accommodation
- Meals as specified
- Admissions to Portsmouth Historic Dockyard and Brunel's SS Great Britain
- 8 day Standard Class BritRail Pass

Suggested tours and admissions to sites and castles are not included, unless otherwise specified. Overnight stay in Penzance may be substituted with a stay in Falmouth.



Cotswolds

QUINTESSENTIAL ENGLAND 9 DAYS

LONDON – COTSWOLDS – BATH – CORNWALL – DORSET – KENT – LONDON

Day 1: London to Cotswolds

Pick up your rental car in London and drive to the Cotswolds, admiring the picture-postcard scenery. Spend the next two nights in the Cotswolds.

Day 2: Cotswolds (B)

Spend the day exploring the beautiful villages in the Cotswolds, including Broadway, Chipping Campden and Bourton-on-the-Water. Discover Bibury and the cottages of Arlington Row.

Day 3: Cotswolds to Bath (B)

Drive through the Cotswolds. Stop at Bradford-on-Avon and visit Castle Combe, known as the 'prettiest village in England.' See Lacock Village, the setting for many films and TV shows. Continue to Bath and visit the Roman Baths. Overnight in Bath.

Day 4: Bath to Cornwall (B)

Travel through Somerset and Devon and drive through Exmoor National Park. Cross the border into Cornwall and admire the sandy beaches and fishing villages. Spend the next two nights in Cornwall.

Day 5: Cornwall (B)

Spend the day exploring Cornwall. Head to Mousehole, a tiny fishing village and visit Fowey with its medieval

streets and Georgian buildings. Stop at Polperro, a fishing village with beautiful cottages clinging to steep hillsides, and be sure to visit St Michael's Mount.

Day 6: Cornwall to Dorset (B)

Journey south along the Jurassic Coast. Stop at villages such as Salcombe and Abbotsbury. Overnight in Dorset.

Day 7: Dorset to Kent (B)

Drive along the Sussex coast, stopping at the many villages, castles and vineyards along the way. Stop at Ridgeview Wine Estate to taste their award-winning sparkling wines. Stop at Battle, where historic buildings line the streets and at Rye, a medieval town perched on a hill. Spend the next two nights in Kent.

Day 8: Kent (B)

Spend the day at leisure discovering Kent, also known as the 'Garden of England'. Be sure to visit Leeds Castle as admission is included.

Day 9: Kent to London (B)

Arrive back into London and return your car.

(B = breakfast)

From **\$2120*[^]** per person twin share

9 DAYS | LONDON TO LONDON

TRAVEL TYPE: Self drive

DEPARTS: Daily

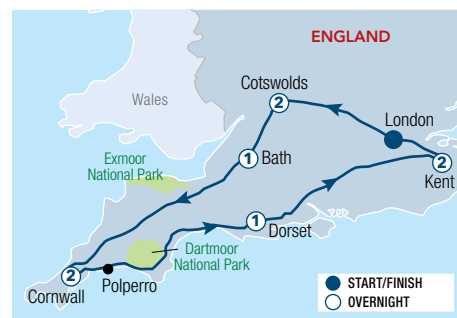
HIGHLIGHTS

- Picturesque Cotswolds villages
- Roman Baths
- Exmoor National Park
- The Jurassic Coast
- The Sussex Coast
- Kent, 'The Garden of England'

INCLUDES

- 8 nights 3 star hotel accommodation
- Meals as specified
- Admissions to The Roman Baths and Leeds Castle
- Local taxes and service charges

[^]Does not include rental car or associated costs. Refer to page 10 for vehicle rental details. Suggested tours and admissions to sites and castles are not included, unless otherwise specified. 4 star accommodation prices also available.



*FROM PRICES ARE A GUIDE ONLY, subject to change and availability and are in Australian Dollars. Prices are per person twin share, unless otherwise specified and based on the lowest room category and travel in low season. For full terms and conditions, refer to the Booking Conditions on the inside back cover of this brochure.

SCOTLAND

Scotland is home to ancient castles, misty lochs, majestic mountains and World Heritage sites, and has a rich, turbulent history. From the buzzing cities of Edinburgh and Glasgow to the untamed natural beauty of the Scottish Highlands, explore all that Scotland has to offer and make memories that will last a lifetime. Here are a few of our top picks.





Victoria Street

EDINBURGH

Visit the capital of Scotland, where the unique blend of medieval and rustic architecture surrounds the city. Known for its vibrant festivals and museums, the capital city brings waves of energy and excitement. Looking around, Edinburgh reveals a picturesque blend of classic architecture, lush green hills, and glimpses of shimmering blue sea.



Loch Lomond, Trossachs National Park

LOCH LOMOND

Discover the wild and natural beauty of Loch Lomond, the largest inland stretch of water in Great Britain. Peaceful villages line Loch Lomond, each offering their unique charm and attractions. The landscape offers a stunning mix of Highland and Lowland dominated by mountains, breathtaking hills, and extensive woodland.



River Ness, Inverness

INVERNESS

Discover the charm of Inverness, the cultural heart of the Scottish Highlands, where ancient castles, serene lochs, and breathtaking landscapes come together in a city steeped in history and natural beauty. Spend time wandering along the River Ness, exploring the legendary Loch Ness, or simply soaking in the warm Highland hospitality.



Kelvingrove Museum and Glasgow University

GLASGOW

Head to the largest city in Scotland and fall into the vibrant and welcoming atmosphere of art, culture, music, and attractions. Glasgow is adorned with stunning Victorian architecture and the River Clyde flowing through its city centre. It is surrounded by stunning rolling hills and remnants of ancient volcanic activity.



The Quiraing

ISLE OF SKYE

Isle of Skye is the largest of Scotland's Inner Hebrides islands, shaped by jagged mountain peaks, impressive cliffs, and peaceful lochs. The Island is filled with quaint villages, rich cultural heritage, abundant wildlife, and ever-changing weather. With mist-cover mountains and frequent rainbows, it possesses a magical and mystical atmosphere.



Eilean Donan Castle

SCOTTISH HIGHLANDS

Venture into the rugged and wild Scottish Highlands with its dramatic mountains, sweeping valleys and idyllic lochs. The Highlands are often hailed as one of Scotland's most romantic regions, adorned with dramatic, rugged mountains, shimmering deep-blue lochs, and sweeping glens that evoke timeless beauty and wild serenity.



Edinburgh Castle

EDINBURGH

Recognised as a UNESCO World Heritage Site, Edinburgh's stunning architecture is not to be missed. Visit the world famous Edinburgh Castle which sits atop of the Royal Mile. Spend time shopping and visiting lively drinking spots in the Grassmarket area, the heart of Edinburgh's Old Town. Explore the Palace of Holyroodhouse, once the home of Mary, Queen of Scots.

SEE

- Visit the Museum of Edinburgh
- See a show at the legendary Festival Theatre
- Visit Dean Village, this hidden gem is one of the city's most photogenic areas

DO

- Tour Edinburgh Castle, one of the UK's most iconic tourist attractions
- Wander Victoria Street which is home to an amazing array of independent boutiques

EAT & DRINK

- Head to Leith, Edinburgh's port city, which has three Michelin star restaurants
- Learn the secrets of a great gin cocktail at Edinburgh Gin or Lind & Lime

WHAT'S ON

Edinburgh's Hogmanay

30 December 25 to 1 January 26

Up Helly Aa

27 January

Edinburgh Marathon

24 May

Highland Games (various locations)

24 May to 12 September

Royal Edinburgh Military Tattoo

1 to 23 August

Edinburgh Fringe Festival

7 to 31 August

Edinburgh International Film Festival

August (dates to be confirmed)



REF.

HOTELS

REF.	HOTELS	PAGE
1	Adagio Edinburgh Royal Mile	39
2	Braid Apartments by Mansley	39
3	Cairn Hotel Edinburgh	39
4	The Knight Residence by Mansley	39
5	Leonardo Hotel Edinburgh Haymarket	39
6	Leonardo Royal Hotel Edinburgh	39
7	Market Street Hotel	40
8	The Resident Edinburgh	40
9	Sheraton Grand Hotel & Spa, Edinburgh	40
10	Ten Hill Place Hotel	40
11	Virgin Hotels Edinburgh	40
12	voco Edinburgh Haymarket	40





PRIVATE AIRPORT TRANSFERS

Get your holiday off to a great start with a door to door transfer. Private transfers are available from Edinburgh Airport to Edinburgh accommodation, 24 hours a day, 7 days a week.

	1 to 2 People	3 to 6 People
Edinburgh accommodation	\$210* [^]	\$252* [^]

[^]Price based on one way per vehicle from Edinburgh Airport.



EDINBURGH HOP-ON HOP-OFF

Discover the key sights of Edinburgh on an open-top double decker bus. Explore the city at your own pace – hop on and off as you please.

Duration: 48 hours
Departs: Daily from 8:50am – 5:50pm every 15 – 60 minutes (seasonal variations)

	Adult	Child 5-15 yrs
48 Hour Ticket	\$66*	\$33*



EDINBURGH CASTLE

Overlooking Edinburgh city is Edinburgh Castle. Learn its history, from military sieges to the kings and queens that once lived within the walls.

Open: 9:30am – 6pm (Apr – Sep),
9:30am – 5pm (Oct – Mar)

Prices for Afternoon Tea also available.

	Adult	Child 7-15 yrs
Admission	\$56*	\$34*



LOCH NESS EXPLORER

Immerse yourself in classic Highland scenery and many 'must see' sights on this tour to Loch Ness. Other highlights include Glen Coe, Ben Nevis and the Great Glen.

Duration: 12 hours 30 minutes
Departs: Daily from Edinburgh at 7:30am

	Adult	Child 5-16 yrs
Sightseeing Tour	\$143*	\$137*
With Loch Ness Cruise	\$206*	\$200*



LOCH LOMOND & THE KELPIES WITH STIRLING CASTLE

This fabulous tour combines the beauty of Loch Lomond and The Trossachs National Park with the history of Stirling Castle and a stop at the majestic Kelpies.

Duration: 8 hours 15 minutes
Departs: Daily from Edinburgh at 8:45am

	Adult	Child 5-16 yrs
Sightseeing Tour	\$137*	\$131*
With Castle Admission	\$208*	\$202*



GLENS, HIGHLANDS & WHISKY

Toast the Highland scenery with a wee dram in a whisky distillery (optional), visit Dunkeld and explore one of Perthshire's beautiful woodland walks and waterfall.

Duration: 9 hours 15 minutes
Departs: Mon, Wed, Fri (Apr – Oct), Mon to Sat, (Aug) from Edinburgh at 8:15am

	Adult	Child 5-16 yrs
Sightseeing Tour	\$152*	\$145*
With Distillery Admission	\$208*	\$202*



OUTLANDER FILM LOCATIONS

Imagine walking in the footsteps of Jamie and Claire from the hit series Outlander. Visit some of the most famous locations from the series such as Midhope, Blackness and Doune Castles.

Duration: 8 hours 45 minutes
Departs: Daily from Edinburgh at 8:45am

	Adult	Child 5-16 yrs
Sightseeing Tour	\$145*	\$139*
With Castles Admission	\$250*	\$244*



SCOTTISH HIGHLANDS & JACOBITE STEAM TRAIN

Follow in the footsteps of the world's most famous wizard, Harry Potter. Visit the Scottish Highlands and ride the Jacobite Steam Train, or the Hogwart's Express as it's known to Harry Potter fans.

Duration: 13 hours 15 minutes
Departs: Daily from Edinburgh at 7:15am (May – Sep), Tue, Thu to Sun (Apr & Oct)

	Adult	Child 5-16 yrs
Sightseeing Tour	\$416*	\$410*



ALNWICK CASTLE & BORDERS

Combine movie magic and historic wonder on this trip through the Scottish Borders and Northumberland. Visit Bamburgh before arriving at Alnwick Castle where you have the option to tour the castle and gardens.

Duration: 9 hours 15 minutes
Departs: Daily from Edinburgh at 8:15am

	Adult	Child 5-16 yrs
Sightseeing Tour	\$150*	\$143*
With Castles Admission	\$263*	\$257*



THE ROYAL EDINBURGH MILITARY TATTOO PACKAGES

The Edinburgh Royal Military Tattoo is the most spectacular show in the world. It is a unique and memorable collection of music, dance and military pageantry. Marvel at Edinburgh Castle's footlights as they transform into a dazzling stage. The show is the army's contribution to the Edinburgh Festival and the highlight of the festival season.

The Military Tattoo production features a superb range of international performers staged against the backdrop of Edinburgh Castle. Almost 1000 musicians, pipers, drummers, singers and dancers perform at the Edinburgh Tattoo on the Esplanade. Enjoy the spine-tingling sights and sounds of the world famous massed pipes and drums, that emerge from the huge castle's gates. This is the finest display military pageantry you will witness anywhere in the world.

In 2026, The Royal Edinburgh Military Tattoo runs from 7 to 29 August.

Includes:

- 2 nights accommodation
- Full Scottish breakfast daily
- Afternoon Tea at Edinburgh Castle
- Edinburgh Military Tattoo ticket (Category 6-7, 10-11)
- Admission to Edinburgh Castle
- 24 hour Hop-On, Hop-Off bus ticket in Edinburgh

3 and 4 night package also available. Premier tickets (Category 8-9) option prices also available. A range of pre-performance hospitality packages are also available.

	Adult	Child 3-12 yrs
3 Star Hotel	\$1834* [^]	\$1087* [^]
4 Star Hotel	\$2417* [^]	\$1465* [^]

[^]Price based on per person twin share. Child rate applies to a maximum of one child aged sharing a twin room with two full paying adults.

HIGHLAND GAMES PACKAGES

Attend an authentic Highland Games and soak up the atmosphere and experience the excitement. The Games, or Gatherings, take place in towns and villages throughout the country and are a highlight of the Scottish calendar, making for a truly memorable day out amongst grand Highland scenery.

Renowned the world over as a test of strength between clans, these contests date back over 900 years. The games are a fantastic spectacle where you'll see Highland dancing, pipe band displays, hammer throwing, tug-of-war and caber tossing. The Braemar Gathering is the biggest and most prestigious event and has been attended by members of the Royal Family since Queen Victoria first attended in 1844.

A range of day tours have been created based around these events that include the best of Scotland's beautiful landscape. Each has its own local charm and character. Leave Edinburgh at 8:30am⁺ and travel to the heart of the country to discover picturesque towns or villages. Spend the day mingling with the locals, admiring traditional Highland dress and trying local specialities before returning to Edinburgh around 5:30pm⁺.

Includes:

- Entrance to the Games
- Expert local guide
- Transportation by climate controlled midi-coach

Highland Games options:

- The Atholl Gathering, Blair Castle: 24 May 26
- Strathmore Highland Games, Glamis Castle: 7 Jun 26
- Luss Highland Games: 4 Jul 26
- Bridge of Allan Highland Games: 2 Aug 26
- Crieff Highland Gathering: 16 Aug 26
- Braemar Highland Games*: 5 Sep 26
- Pitlochry Highland Games: 12 Sep 26

⁺Braemar Gathering departs at 8am and returns at approximately at 8pm.

	Adult	Child 5-16 yrs
Sightseeing Tour	\$276*	\$269*



CAIRN HOTEL EDINBURGH



Standard

10-18 Windsor Street, Edinburgh
MAP PAGE 36

From **\$235** *^

- ❖ Individual and contemporary décor in all rooms
- ❖ Breathtaking city views and an extensive cocktail menu at the hotel's bar, Juniper

Location: With its central location at the top of the Royal Mile and steps from Princes Street, it's the perfect hotel to explore Scotland's capital. Distances: Royal Mile 1.8km.

Property Features: Restaurant, Bar, 24 hour reception, 52 rooms.

Room Features: TV with Freeview channels, Tea/coffee making facilities, Ironing facilities, Hair dryer.

Max Capacity: Standard – 3, Superior – 2.

^Price applies to Sun-Thu nights.



FREE

ADAGIO EDINBURGH ROYAL MILE



231 Canongate, Edinburgh
MAP PAGE 36

From **\$243** *^

- ❖ Fully furnished studio and one bedroom apartments with well-equipped kitchens
- ❖ Access to 24 hour gym

Location: Perfectly located in the heart of the city and close to shops and historic sites. Distances: Royal Mile 350m.

Property Features: Breakfast room, Gym, Guest laundry, Laundry/dry cleaning service, 24 hour reception, 146 rooms.

Room Features: Air-conditioning, Kitchen with microwave and dishwasher, Docking station, Ironing facilities, Hair dryer.

Max Capacity: Studio – 2, 1 Bedroom – 4.

^Minimum 3 night stay applies.



FREE

BRAID APARTMENTS BY MANSLEY



Studio

27 Thistle Street Edinburgh
MAP PAGE 36

From **\$360** *^

- ❖ Fully equipped, spacious apartments with washing machine and dryer
- ❖ Located in the heart of the city's New Town

Location: Nestled on Thistle Street in the heart of Edinburgh, close to Princes Street and major attractions. Distances: Royal Mile 750m.

Property Features: Daytime reception services, Laundry service, Parking (off-site – extra charge), Lift, 20 rooms.

Room Features: Apartments with separate living room and bedrooms (except studios), Air-conditioning, Kitchen with microwave and dishwasher, Cable TV, Washer/dryer, Ironing facilities, Hair dryer.

Max Capacity: Studio/1 Bedroom – 2, 2 Bedroom – 4.

^Minimum 2 night stay applies.



FREE

THE KNIGHT RESIDENCE BY MANSLEY



City Studio

12 Lauriston Street, Edinburgh
MAP PAGE 36

From **\$356** *^

- ❖ Apartments feature separate living area and bedrooms
- ❖ All rooms feature washing machine and dryer

Location: Situated in the centre of the Old Town near iconic Edinburgh Castle and the shopping district. Distances: Royal Mile 800m.

Property Features: 24 hour reception, parking (security – extra charge), 33 rooms.

Room Features: Apartments with separate living room and bedrooms (except studios), Kitchen with microwave and dishwasher, Washer/dryer, Ironing facilities, Hair dryer.

Max Capacity: City Studio/One Bedroom – 2, Two Bedroom – 4, Three Bedroom – 6.

^Minimum 2 night stay applies.



FREE

LEONARDO HOTEL EDINBURGH HAYMARKET



Standard

1 Morrison Link, Edinburgh
MAP PAGE 36

From **\$282** *

- ❖ Vitruv restaurant serves fresh regional products
- ❖ Princes Street, the Grassmarket, and the Royal Mile within easy reach

Includes full buffet breakfast daily.

Location: Positioned proudly beneath Edinburgh Castle, right next to Haymarket train station in the city centre. Distances: Royal Mile 1.5km.

Property Features: Restaurant, Bar, 24 hour room service, 24 hour reception, Laundry/dry cleaning service, Lift, Vending machines, Parking (extra charge), 282 rooms.

Room Features: Air-conditioning, Cable TV, Tea/coffee making facilities, Ironing facilities, Hair dryer.

Max Capacity: Standard/Executive – 3.



FREE

LEONARDO ROYAL HOTEL EDINBURGH



Superior

43 Jeffrey Street, Edinburgh
MAP PAGE 36

From **\$222** *

- ❖ Well located, just off the Royal Mile
- ❖ Comfortable, well appointed rooms
- ❖ Leo's restaurant has breathtaking views of the city

Includes buffet breakfast daily.

Location: Situated in the heart of Edinburgh, the hotel offers easy access to major attractions, including Edinburgh Castle. Distances: Royal Mile 1.1km.

Property Features: Restaurant, Bar, 24 hour room service, 24 hour reception, Gym, Laundry service, Lift, 190 rooms.

Room Features: Air-conditioning, Flat screen TV with Chromecast, Tea/coffee making facilities, Ironing facilities, Hair dryer.

Max Capacity: Superior/Executive – 3.



FREE

EDINBURGH ACCOMMODATION

MARKET STREET HOTEL



6 Market St, Edinburgh
MAP PAGE 36

From **\$493** *^

- ❖ 7th floor, Nor' Loft Champagne lounge
 - ❖ Local heroes on hand to help
 - ❖ Surrounded by boutique shops and artisan cafés
- Includes full breakfast daily.**

Location: Perched between Old Town and New Town with Edinburgh Castle and the famous Royal Mile only a short stroll away. Distances: Royal Mile 180m.

Property Features: Restaurant, Bar, Rooftop lounge, 24 hour room service, 24 hour reception, Laundry services, Parking (off-site – extra charge), Lift, 98 rooms.

Room Features: Air-conditioning, Smart TV with Chromecast, Bluetooth speakers, Mini bar, Tea/coffee making facilities, Hair dryer.

Max Capacity: Standard Cozy/Vista Room – 2.

^Price applies to Sun-Thu nights.



THE RESIDENT EDINBURGH



Standard

15 Drumsheugh Gardens, Edinburgh
MAP PAGE 36

From **\$615** *^

- ❖ Brand new hotel opened in September 2024
- ❖ Each room features a mini kitchen
- ❖ Specially trained staff who are local area experts

Location: In the thriving New Town and West End district, this neighbourhood is renowned for its Georgian architecture with shopping and dining options nearby. Distances: Royal Mile 2.7km.

Property Features: Grocery service, 24 hour reception, Laundry/dry cleaning service, Lift, 164 rooms.

Room Features: Smart TV, Mini fridge, Microwave, Sink with filtered water tap, Nespresso machine, Ironing facilities, Hair dryer, Safe.

Max Capacity: Standard – 2, Superior – 3, Deluxe – 4.



TEN HILL PLACE HOTEL



Classic

10 Hill Place, Edinburgh
MAP PAGE 36

From **\$454** *^

- ❖ Fabulous central location
 - ❖ Beautifully appointed rooms
 - ❖ Enjoy dinner or a drink in the restaurant
- Includes full Scottish breakfast daily.**

Location: Set in a quiet Georgian square, just 5 minutes' walk from the Royal Mile. Distances: Royal Mile 600m.

Property Features: Restaurant, Bar, Room service, Fitness centre, 24 hour reception, Parking (extra charge), 129 rooms.

Room Features: Satellite TV, Tea/coffee making facilities, Iron and ironing board, Hair dryer, Safe.

Max Capacity: Classic/Deluxe/Superior/Skyline Junior Suite – 2.

^Price applies to Sun nights.



VOCO EDINBURGH HAYMARKET



46 Torphichen St, Edinburgh
MAP PAGE 36

From **\$476** *^

- ❖ Modern, spacious and comfortable rooms
 - ❖ Close to Haymarket train station
 - ❖ Restaurant offering the best seasonal produce
- Includes breakfast daily.**

Location: Conveniently situated near major attractions like Edinburgh Castle, the Royal Mile, and the West End. Distances: Royal Mile 1.3km.

Property Features: Restaurant, Bar, Room service, 24 hour reception, Fitness centre, Laundry/dry cleaning service, Luggage storage, Lift, 150 rooms.

Room Features: Air-conditioning, Smart TV with Chromecast, Tea/coffee making facilities, Hair dryer.

Max Capacity: Standard/Premium – 3.

^Price applies Sun-Thu nights.



SHERATON GRAND HOTEL & SPA, EDINBURGH



1 Festival Square, Edinburgh
MAP PAGE 36

From **\$424** *^

- ❖ One Spa with a rooftop Hydropool
- ❖ Try the signature One Square Gin at One Square Bar
- ❖ Some rooms offer views of Edinburgh Castle

Location: Situated in Edinburgh's West End, just a short walk from Princes Street and with easy access to Edinburgh Castle and Haymarket Station. Distances: Royal Mile 1.1km.

Property Features: Infinity pool, Restaurant, Bar, 24 hour room service, 24 hour reception, Day spa, Fitness centre, Lift, 269 rooms.

Room Features: Air conditioning, Flat screen TV, Mini fridge, Tea/coffee making facilities, Bathrobes, Hair dryer.

Max Capacity: Deluxe/Castle View/Club – 2. Suite are also available.



VIRGIN HOTELS EDINBURGH



Chamber King

1 India Buildings, Victoria Street, Edinburgh
MAP PAGE 36

From **\$541** *^

- ❖ Signature two-chamber room design with a separate dressing room and 'Lounge Bed'
 - ❖ Views of Edinburgh Castle and the Old Town
- Includes full breakfast daily.**

Location: Situated on Victoria Street, the real-life inspiration behind Diagon Alley in the Harry Potter series, just a four minute walk to Edinburgh Castle. Distances: Royal Mile 100m.

Property Features: Restaurants (2), Bar, 24 hour room service, Library, Gym, Lift, 225 rooms.

Room Features: Air-conditioning, Separate dressing room, Mini bar, Bathrobe and slippers, Hair dryer.

Max Capacity: Chamber King/Grand Chamber King/Junior Suite – 2.

^Price applies to Sun-Thu nights.



THE ADDRESS GLASGOW



Classic

39-45 Renfield St, Glasgow

From **\$488** *[^]

- ❖ Newly refurbished guest rooms
- ❖ Wellness centre with plunge pool, gym and Himalayan Salt Sauna

Includes full Scottish breakfast daily.

Location: A downtown haven in the heart of Glasgow, making it an ideal base to explore the city. Distances: George Square 500m.

Property Features: Plunge pool, Restaurant, Bar, 24 hour reception, Wellness centre, Gym, Laundry services, Lift, 95 rooms.

Room Features: Air-conditioning, Flat screen TV, Tea/coffee making facilities, Ironing facilities, Hair dryer, Safe.

Max Capacity: Classic – 3, Club – 2.

[^]Price applies to Sun-Thu nights.



LEONARDO HOTEL GLASGOW



Superior

80 Jamaica Street, Glasgow

From **\$199** *[^]

- ❖ All day Costa Coffee bar on-site
- ❖ The bar serves light snacks and a wide range of beer and wine

Location: Set in the city centre, overlooking the River Clyde and next to Glasgow Central Station. Distances: George Square 850m.

Property Features: Restaurant, Bar, 24 hour room service, Laundry/dry cleaning service, 321 rooms.

Room Features: Air-conditioning, Tea/coffee making facilities, Pillow menu, Hair dryer.

Max Capacity: Superior – 3, Junior Suite – 2, Executive – 4.



MILLENNIUM HOTEL GLASGOW



George Square, Glasgow

From **\$244** *[^]

- ❖ Impressive Georgian façade
- ❖ The Brasserie on George Square serves fine Scottish cuisine

Location: On George Square in the heart of Glasgow's vibrant city centre, next door to Queen Street Station.

Property Features: Restaurant, Bar, Room service, 24 hour reception, Laundry/dry cleaning service, Lift, 65 rooms.

Room Features: Flat screen TV, Tea/coffee making facilities, Ironing facilities, Hair dryer, Safe.

Max Capacity: Standard/Executive – 3, City/Junior Suite – 2.



BEST WESTERN INVERNESS PALACE HOTEL & SPA



8 Ness Walk, Inverness

From **\$457** *[^]

- ❖ Riverside location with views of the castle
- ❖ In a Victorian mansion offering charm and character
- ❖ Dedicated leisure club with an indoor pool

Includes full Scottish breakfast daily.

Location: In the Inverness City Centre, on the banks of the River Ness, and directly opposite Inverness Castle. Distances: City centre 500m.

Property Features: Indoor pool, Restaurant, Bar, 24 hour reception, Leisure club, Day spa, Laundry/dry cleaning service, Luggage storage, Lift, 110 rooms.

Room Features: Flatscreen TV, Tea/coffee making facilities, Ironing facilities, Hair dryer.

Max Capacity: Standard – 3, River View – 2.

[^]Price applies Mon-Wed nights.



HIGHLAND APARTMENTS BY MANSLEY, INVERNESS



1 Bedroom

Bridge Street, Inverness

From **\$391** *[^]

- ❖ Apartments offer views of the city, Inverness Castle or the River Ness
- ❖ Self check-in, self-contained property

Location: Perfectly positioned in the city centre of Inverness, making it the ideal base to explore the Scottish Highlands. Distances: City centre 170m.

Property Features: Parking (security – extra charge), 19 rooms.

Room Features: Apartments with separate living room and bedrooms (except studios), Kitchen with microwave and dishwasher, Washing machine, Ironing facilities, Hair dryer.

Max Capacity: 1 Bedroom – 2, 2 Bedroom – 4.

[^]Minimum 2 night stay applies.



COPTHORNE HOTEL ABERDEEN



Standard

122 Huntly Street, Aberdeen

From **\$245** *[^]

- ❖ Surrounded by bars and restaurants
- ❖ Enjoy hearty food at Grain Store Bar and Restaurant
- ❖ Friendly Scottish hospitality

Location: Housed in a beautifully maintained historic building situated in the heart of Aberdeen's West End. Distances: City centre 1.5km.

Property Features: Restaurant, Bar, 24 hour reception, Laundry/dry cleaning service, Lift, 87 rooms.

Room Features: Flat screen TV, Mini fridge, Tea/coffee making facilities, Ironing facilities, Hair dryer, Safe.

Max Capacity: Standard/Club – 3.



SCOTLAND TOURING



Portree, Isle of Skye

ISLE OF SKYE, THE HIGHLANDS & JACOBITE STEAM TRAIN 3 DAYS

EDINBURGH – ISLE OF SKYE – EDINBURGH

Day 1: Edinburgh to Isle of Skye

Leaving Edinburgh, travel past the stunning views of the Forth Bridge and enter the Highlands through Perthshire, a land of forests, rivers, and mountains. Visit the quaint village of Dunkeld with its historic cathedral. Travel further north into the Highlands before entering the Great Glen. At Fort Augustus, there is time to explore the shores of Loch Ness. En route to the famous Isle of Skye, take in spectacular Eilean Donan Castle, one of Scotland's most famous icons. Spend the next two nights in Portree on the Isle of Skye.

Day 2: Isle of Skye (B)

Today is spent exploring the dramatic Isle of Skye with its amazing scenery, myths and legends. Highlights include the mysterious rock formation of the Old Man of Storr, Kilt Rock with its cascading waterfall and Dunvegan's impressive castle.

Day 3: Isle of Skye to Edinburgh (B)

Explore a little more of the beautiful Isle of Skye before the ferry trip to the west coast fishing village of Mallaig. Here, board the Jacobite Steam Train to Fort William, one of the most spectacular railway journeys in the world which crosses the Glenfinnan Viaduct. Head south through the dramatic scenery of Glen Coe, wild Rannoch Moor, then into the heart of Rob Roy country. The tour concludes on arrival in Edinburgh this evening.

(B = breakfast)

From **\$1611*** per person twin share

3 DAYS | EDINBURGH TO EDINBURGH

TRAVEL TYPE: Escorted coach

DEPARTS: Mon, Wed, Sat (Apr – Oct)

HIGHLIGHTS

- Explore the stunning Isle of Skye
- Ride the Jacobite Steam Train
- See Scotland's stunning Highlands

INCLUDES

- 2 nights 3 star B&B accommodation
- Meals as specified
- One way Jacobite Steam Train ride
- Admission to Dunvegan Castle
- Isle of Skye ferry crossing
- Expert local guide
- Travel by climate controlled midi-coach

3 day Isle of Skye & The Highlands Tour is also available.



Atlantic puffins, Treshnish Isles

MULL, IONA & STAFFA PUFFIN EXPERIENCE 4 DAYS

EDINBURGH – TOBERMORY – OBAN – EDINBURGH

Day 1: Edinburgh to Tobermory

Leaving Edinburgh, journey west past the ancient city of Stirling towards the scenic beauty of Loch Lomond. Explore the charming village of Luss, take photos from the Rest and Be Thankful viewpoint and enjoy free time in pretty Inveraray for lunch. Visit the ancient Dunadd Fort before continuing towards the bustling port town of Oban for the ferry across to Mull. Spend two nights in Tobermory, an adorable multi-coloured harbour town.

Day 2: Tobermory (B)

After breakfast, enjoy a cruise to the Treshnish Isles and Staffa. Throughout this adventure you may spot puffins, dolphins, seals, eagles and whales, while listening to commentary from the wildlife guide. Listen to tales of giants and geology as you sail to Staffa and marvel at Fingal's Cave. Enjoy the beautiful island views and marine life on the return to Tobermory.

Day 3: Tobermory to Oban (B)

Today, travel across mountainous Isle of Mull to visit the spiritual Isle of Iona, referred to as the sacred heart of Scotland. Enjoy free time to have lunch, visit Iona Abbey and explore the white sand beaches. Afterwards, take the ferry back to Oban, where you can try fresh seafood and have a drink with the locals. Spend the night in Oban.

Day 4: Oban to Edinburgh (B)

Depart Oban and travel through the dramatic and breathtaking landscape of Glen Coe and onto the wild expanse of Rannoch Moor and Rob Roy's old stomping ground. Stop at a whisky distillery to learn all about single malt production and to sample it straight from the source. Return to Edinburgh where the tour concludes.

(B = breakfast)

From **\$1573*** per person twin share



4 DAYS | EDINBURGH TO EDINBURGH

TRAVEL TYPE: Escorted coach

DEPARTS: Monday (1 Jun – 17 Aug 26)

HIGHLIGHTS

- Marvel at Loch Lomond
- Indulge in some fresh Scottish seafood in Oban
- Wildlife cruise and puffin spotting
- Isle of Iona
- Glen Coe
- Whisky Distillery

INCLUDES

- 3 nights 3 star hotel accommodation
- Meals as specified
- Wildlife boat tour to Staffa and the Treshnish Isles
- Whisky distillery tour
- All ferry crossings
- Expert local guide
- Travel by climate controlled midi-coach



* FROM PRICES ARE A GUIDE ONLY, subject to change and availability and are in Australian Dollars. Prices are per person twin share, unless otherwise specified and based on the lowest room category and travel in low season. For full terms and conditions, refer to the Booking Conditions on the inside back cover of this brochure.



Eilean Donan Castle

ISLE OF SKYE, INVERNESS & JACOBITE STEAM TRAIN 5 DAYS
EDINBURGH – OBAN – ISLE OF SKYE – INVERNESS – EDINBURGH

Day 1: Edinburgh to Oban

Leave Edinburgh and head north to Stirling with stunning views of the Castle. Travel to the Highlands heading through wild Rannoch Moor and Glen Coe to the fishing port of Oban for an overnight stay.

Day 2: Oban to Isle of Skye (B)

Take the Jacobite Steam Train from Fort William and discover why this spectacular trip has been voted the best train journey in the world by Wanderlust Magazine. After arriving in Mallaig, the tour continues with a ferry ride to the Isle of Skye. Spend the night in Portree.

Day 3: Isle of Skye to Inverness (B)

Explore the magical Isle of Skye before returning to the mainland. On the way to Loch Ness, stop at Eilean Donan Castle, before winding along the Great Glen to Inverness. Spend the next two nights in Inverness.

Day 4: Inverness (B)

Enjoy a cruise on Loch Ness before turning northward to the stunning beauty of the north-west Highlands. Stop in the beautiful town of Beauly with its priory dating back to 1230. Later visit Culloden Battlefield, site of the last battle fought on British soil, followed by the mysterious chambered cairns and standing stones of Clava Cairns; both of these locations provided inspiration for the hit TV series Outlander. Return to Inverness.

Day 5: Inverness to Edinburgh (B)

Visit the Highland Folk Museum to get a real taste of Highland life from the past centuries before heading for a local whisky tasting, also known as the 'water of life'. Enjoy a final stop at Dunkeld. Take a walk through the quaint village, on to the River Tay and visit the cathedral. Return to Edinburgh where the tour ends.

(B = breakfast)

From **\$2373*** per person twin share

5 DAYS | EDINBURGH TO EDINBURGH

TRAVEL TYPE: Escorted coach

DEPARTS: Mon (Apr – Oct), Mon, Thu (Jun – Sep)

HIGHLIGHTS

- Explore the stunning Isle of Skye
- Ride the Jacobite Steam Train
- Enjoy a cruise on Loch Ness

INCLUDES

- 4 nights 3 star B&B accommodation
- Meals as specified
- Whisky tasting
- One way Jacobite Steam Train ride
- Loch Ness cruise
- Isle of Skye ferry crossing
- Expert local guide
- Travel by climate controlled midi-coach

5 day Isle of Skye & Inverness Tour is also available.



Callanish Standing Stones, Isle of Lewis

ISLE OF SKYE, OUTER HEBRIDES & JACOBITE STEAM TRAIN 6 DAYS
EDINBURGH – INVERNESS – STORNOWAY – ISLE OF SKYE – EDINBURGH

Day 1: Edinburgh to Inverness

Depart Edinburgh for Inverness, visiting The Kelpies and passing Stirling and Doune Castle on the way. See stunning Glen Coe, Ben Nevis and Loch Ness. Spend the night in Inverness, enjoying free time.

Day 2: Inverness to Stornoway (B)

Today visit Black Water Falls before travelling to Ullapool. Travel by ferry to Stornoway on the Isle of Lewis. Explore flawless white beaches with turquoise sea and a backdrop of mountains before returning to Stornoway for the night.

Day 3: Stornoway (B)

Explore the island, visiting the mysterious 5000-year-old Callanish Standing Stones, and the Iron Age at the broch of Dun Carloway. Experience 17th century island life at the Gearrannan Blackhouse Village and visit the Butt of Lewis to see its isolated lighthouse on the most northerly point on the island.

Day 4: Stornoway to Isle of Skye (B)

Depart Stornoway and head back south towards the picturesque Isle of Harris where you get the chance to shop for the famous Harris Tweed. Take a ferry to the Isle of Skye, where the afternoon is spent exploring. Arrive in Portree for a two night stay.

Day 5: Isle of Skye (B)

Enjoy a day of exploration on the Isle of Skye. Travel over the Skye Bridge to the iconic Eilean Donan Castle. Return to Portree where there will be free time to visit the shops, restaurants, and picturesque harbour.

Day 6: Isle of Skye to Edinburgh (B)

Explore a little more of the Isle of Skye before taking the ferry to the fishing village of Mallaig. From here, travel over the Glenfinnan Viaduct on the Jacobite Steam Train. Travel through the Cairngorms National Park back to Edinburgh where the tour concludes.

(B = breakfast)

From **\$4030*** per person twin share

6 DAYS | EDINBURGH TO EDINBURGH

TRAVEL TYPE: Escorted coach

DEPARTS: Thursday (May – Sep)

HIGHLIGHTS

- Explore the Outer Hebrides, Isle of Lewis and Isle of Harris
- Ride the Jacobite Steam Train
- Visit the world-famous Loch Ness

INCLUDES

- 5 nights 3 star B&B accommodation
- Meals as specified
- Whisky tasting
- One way Jacobite Steam Train ride
- All ferry crossings
- Expert local guide
- Travel by climate controlled midi-coach



*FROM PRICES ARE A GUIDE ONLY, subject to change and availability and are in Australian Dollars. Prices are per person twin share, unless otherwise specified and based on the lowest room category and travel in low season. For full terms and conditions, refer to the Booking Conditions on the inside back cover of this brochure.

SCOTLAND TOURING



Dunrobin Castle

ISLE OF SKYE, ORKNEY, NORTH COAST 500 & JACOBITE STEAM TRAIN 8 DAYS

EDINBURGH – INVERNESS – KIRKWALL – ORKNEY – ULLAPOOL – PORTTREE – OBAN – EDINBURGH

Day 1: Edinburgh to Inverness

Today, depart Edinburgh for the Highlands. Visit Dunkeld and travel through Cairngorms National Park to Culloden Battlefield. See the mysterious standing stones of Clava Cairns. Later, arrive in Inverness for an overnight stay.

Day 2: Inverness to Kirkwall (B)

Depart Inverness and join the spectacular North Coast 500 trail along the stunning coastline. Visit the fairytale Dunrobin Castle and a local whisky distillery before a ferry journey to Orkney. Spend two nights in at Kirkwall.

Day 3: Orkney (B)

Today, visit the Italian Chapel. Spend time exploring Orkney's Neolithic history with stops at Skara Brae, Ring of Brodgar and the Stones of Stenness. In the afternoon explore the stunning Yesnaby Cliffs. Return to Kirkwall*.

Day 4: Kirkwall to Ullapool (B)

Take a ferry back to the mainland to re-join the North Coast 500 trail. Stop at Smoo Cave and Knockan Crag before arriving in Ullapool for an overnight stay.

Day 5: Ullapool to Portree (B)

Travel through awe-inspiring landscapes to the Isle of Skye. Pass Eilean Donan Castle, before crossing the Skye Bridge. Visit Kilt Rock with its impressive cascading waterfall before an overnight stay in Portree.

Day 6: Portree to Oban (B)

Visit the stunning Sleat Peninsula and drive through the magnificent Cuillin Mountains before taking a ferry to Mallaig. Enjoy a ride on the Jacobite Steam Train. Continue to Oban for a two night stay.

Day 7: Oban (B)

Enjoy a free day to explore Oban at your own pace.

Day 8: Oban to Edinburgh (B)

Today, travel back to Edinburgh. See the ruins of Kilchurn Castle, pass the Wallace Monument and visit the iconic Kelpies before arriving in Edinburgh in the early evening.

(B = breakfast)

From **\$4478*** per person twin share



8 DAYS | EDINBURGH TO EDINBURGH

TRAVEL TYPE: Escorted coach

DEPARTS: Sunday (24 May – 20 Sep 26)

HIGHLIGHTS

- Culloden Battlefield
- Stones of Stenness
- Isle of Skye
- Jacobite Steam Train

INCLUDES

- 7 nights 3 star accommodation
- Meals as specified
- Visits to the Italian Chapel and Skara Brae
- Whisky distillery tour
- All ferry crossings
- Expert local guide
- Travel by climate controlled midi-coach

* Some departures will stay in Stromness due to accommodation availability.



Stirling Castle

CLASSIC SCOTLAND SELF DRIVE 8 DAYS

EDINBURGH – STIRLING – OBAN – ISLE OF SKYE – INVERNESS – PERTH – EDINBURGH

Day 1: Edinburgh to Stirling

Pick up your rental car in Edinburgh and drive to The Kelpies and on to Stirling. Explore Stirling Castle, visit Bannockburn and the Wallace Monument. Overnight in Stirling.

Day 2: Stirling to Oban (B)

Depart Stirling and drive west via Loch Lomond, the largest lake in Great Britain. Continue along Loch Fyne and pass by Inveraray Castle, the charming home of the Duke of Argyll. Alternatively, travel via the rugged landscape of Rannoch Moor and Glen Coe, one of the most scenic valleys in Scotland. Overnight in Oban.

Day 3: Oban to Isle of Skye (B)

This morning drive north and take a ferry from Mallaig to the Isle of Skye. Alternatively, continue via Loch Lochy to Kyle of Lochalsh and take the bridge to the Isle of Skye. Overnight on the Isle of Skye.

Day 4: Isle of Skye to Inverness (B)

Depart the Isle of Skye and travel to Eilean Donan Castle, one of the most iconic images of Scotland. Continue to Inverness for an overnight stay.

Day 5: Inverness to Perth (B)

This morning take a cruise on Loch Ness and explore Urquhart Castle. Later continue to Pitlochry and visit the smallest distillery in Scotland, the Edradour Whisky Distillery. Overnight in Perth.

Day 6: Perth to Edinburgh (B)

Explore the 'home of golf', St Andrews, before continuing along the coast via the small fishing villages of Elie and Pittenweem. Cross the Queensferry Crossing with its spectacular views of the Firth of Forth. Return your rental car in Edinburgh and transfer to your hotel. Spend the next two nights in Edinburgh.

Day 7: Edinburgh (B)

Spend the day at leisure discovering all that Edinburgh has to offer. Visit Edinburgh Castle, the Royal Mile and the Palace of Holyroodhouse (extra charge).

Day 8: Edinburgh (B)

Your self drive journey concludes today after breakfast.

(B = breakfast)

From **\$1910**** per person twin share

8 DAYS | EDINBURGH TO EDINBURGH

TRAVEL TYPE: Self drive

DEPARTS: Daily (Apr – Oct)

HIGHLIGHTS

- Stirling Castle
- Tranquil beauty of Loch Lomond
- Iconic Eilean Donan Castle
- Loch Ness & 'Nessie'
- 'Home of golf', St Andrews

INCLUDES

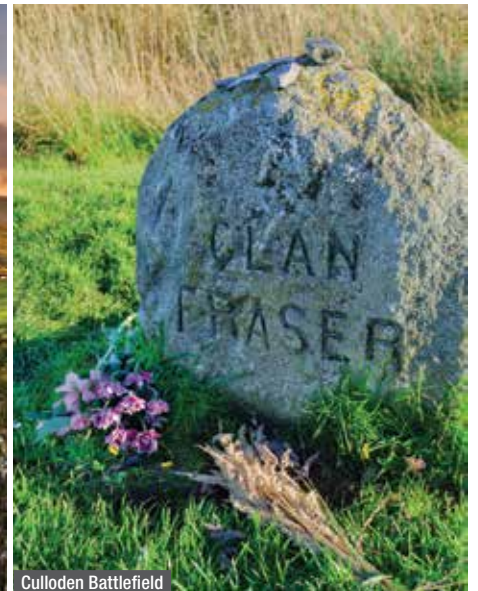
- 7 nights 3 star accommodation
- Meals as specified
- Admission to Edinburgh Castle
- Loch Ness by Jacobite Freedom Cruise
- Local taxes and service charges

** Does not include rental car or associated costs. Refer to page 10 for vehicle rental details. Suggested tours and admissions to sites and castles are not included, unless otherwise specified. 4 star accommodation prices also available.





The Quiraing, Isle of Skye



Culloden Battlefield

HIGHLANDS & THE ISLANDS OF SCOTLAND 12 DAYS

GLASGOW – FORT WILLIAM – ISLE OF SKYE – ULLAPOOL – THURSO – ORKNEY – INVERNESS – ABERDEEN – EDINBURGH

Day 1: Glasgow

Arrive at Glasgow and spend the day exploring the city on a Hop-On, Hop-Off sightseeing tour. Consider visiting one of the many fascinating museums in the city, such as Kelvingrove where admission is free. Overnight in Glasgow.

Day 2: Glasgow to Fort William (B)

Pick up your rental car and drive from Glasgow to the Fort William area. Along the way, you may choose to include a cruise on Loch Lomond, or stop in the pretty village of Luss. Continue your drive north across the dramatic Rannoch Moor and stop for photos of spectacular Glen Coe, before arriving in your next overnight location, Fort William.

Day 3: Fort William to Isle of Skye (B)

Travel along the scenic Road to the Isles, stopping at Glenfinnan Monument for photos of the railway bridge, famous from the Harry Potter films, before crossing to the Isle of Skye by ferry. Explore this stunning island this afternoon. Spend the night on the Isle of Skye.

Day 4: Isle of Skye to Ullapool (B)

Return to the mainland via the Skye Bridge. Be sure to stop along the way to take a photo of Eilean Donan Castle, one of the most photographed castles in Scotland. Continue north to Ullapool, along the beautiful west coast. The coastal scenery is spectacular, and there are opportunities to stop in some of the villages along the way. Consider a stop at Inverewe Garden, the tropical haven on the coast of Scotland, before arriving in the bustling harbour town of Ullapool for an overnight stay.

Day 5: Ullapool to Thurso (B)

Drive from Ullapool to Thurso along some of the most dramatic coastal scenery in Britain, before arriving into Thurso for an overnight stay.

Day 6: Thurso to Orkney (B)

Take the ferry to Orkney. There is so much to see such as Skara Brae, the 5000 year old village and the Ring of Brodgar stone circle. Spend the night on Orkney.

Day 7: Orkney to Inverness (B)

Return to the mainland by ferry and head south from Thurso to Inverness. Along the way take the chance to stop at Dunrobin Castle, a fairy-tale castle on the east coast. Check into your accommodation in Inverness, before exploring the city and its traditional pubs on foot or on a Hop-On, Hop-Off tour. Stay the next two nights in Inverness.

Day 8: Inverness (B)

Spend the day exploring the Loch Ness and Inverness area – why not visit Urquhart Castle or take a cruise. For Outlander fans, don't miss the nearby Clava Cairns and Culloden Battlefield.

Day 9: Inverness to Aberdeen (B)

Leave Inverness and head into the Speyside region of Scotland, an area famous for its distilleries. Stop to learn about the craft of making whisky at one of the distilleries along the way. You can also choose to stop at the Speyside Cooperage to learn about the craft of making whisky barrels. Continue to Aberdeen to spend the night.

Day 10: Aberdeen to Edinburgh (B)

On your way south, you may choose to stop and visit the stunning Glamis Castle or the V&A Museum in Dundee before crossing the Tay Bridge into the Kingdom of Fife. Golf enthusiasts will want to stop in St Andrews. Cross the Queensferry Crossing on your way to Edinburgh for a two night stay.

Day 11: Edinburgh (B)

Discover Edinburgh on a Hop-On, Hop-Off tour, before visiting Edinburgh Castle. If you have developed a taste for whisky, join a tour at the Scotch Whisky Experience, or go to nearby Leith to visit the Port of Leith distillery and the Royal Yacht Britannia.

Day 12: Edinburgh (B)

Your epic journey around the coast of Scotland comes to an end when you return your car.

(B = breakfast)

From **\$3386***[^] per person twin share

12 DAYS | GLASGOW TO EDINBURGH

TRAVEL TYPE: Self drive

DEPARTS: Daily

HIGHLIGHTS

- Tranquil beauty of Loch Lomond
- Scenic Isle of Skye
- 5,000 year old village of Skara Brae
- Loch Ness and 'Nessie'

INCLUDES

- 11 nights 3 star accommodation
- Meals as specified
- 24 hour Hop-On, Hop-Off bus tickets in Glasgow, Inverness and Edinburgh
- Admissions to Edinburgh Castle and a distillery
- Ferry services from Mallaig to Armadale, Scrabster to Stromness and Stromness to Scrabster
- Local taxes and service charges

[^] Does not include rental car or associated costs. Refer to page 10 for vehicle rental details. Suggested tours and admissions to sites and castles are not included, unless otherwise specified. 4 star accommodation prices also available.



* FROM PRICES ARE A GUIDE ONLY, subject to change and availability and are in Australian Dollars. Prices are per person twin share, unless otherwise specified and based on the lowest room category and travel in low season. For full terms and conditions, refer to the Booking Conditions on the inside back cover of this brochure.

THE ISLE OF IRELAND

Lose yourself in The Isle of Ireland's picture postcard harbour villages, remote wilderness and culture-laden cities. Follow the rugged coastline, pass rolling hills, explore historic castles, spend the night in an ancient castle and meet friendly locals over a pint. The Isle of Ireland will delight with its unique traditions and beauty. Here are a few of our top picks.





Guinness Storehouse

Tourism Ireland/Diogo

DUBLIN

Dublin is the capital and largest city of Ireland, recognised for its literary heritage, friendly locals, and vibrant atmosphere. Situated on the east coast, the city flawlessly blends old-world charm with modern energy. Dublin is easily navigated by foot with beautiful historic architecture, local pubs and thriving art scenes at every turn.



Belfast City Hall

BELFAST

Belfast is a vibrant city where history meets innovation. Explore the heritage of the Titanic, stroll through the Cathedral Quarter's cobblestoned streets, and marvel at stunning murals. Nestled between hills and sea, Belfast offers rich culture, warm hospitality, and unforgettable experiences – perfect for curious travellers seeking charm, character, and a touch of the unexpected.



High Street, Galway

Tourism Ireland/Julia Weigl

GALWAY

The city of Galway is one of Ireland's most charming cities and lies along the west coast of Ireland, with a lively city centre and beautiful coastal scenery. With a reputation for its free-spirited vibes, it is a compact and walkable city with colourful buildings, cobblestone streets and traditional Irish music filling the bohemian atmosphere.



Ring of Kerry

KILLARNEY

Killarney is the gateway to Ireland's southwest, brimming with charm and character. Its bustling streets are lined with cosy pubs, artisan shops, and welcoming cafés. From here, wander through Killarney National Park's lakes and woodlands, explore the Ring of Kerry's dramatic coastal views, and discover ancient castles and welcoming villages.



Cobh, County Cork

COUNTY CORK

Discover the largest and southernmost county in Ireland, "The Rebel County," known for its fascinating buildings, vibrant cultural scene, and scenic riverside. Sitting on an island in the River Lee, the wildflower-studded mountains, rugged coastlines, charming harbour towns, and undulating hills perfectly illustrates County Cork's landscape.



Viking Dragon Slayer

WATERFORD

Discover Waterford, Ireland's oldest city, where Viking history meets coastal charm. Wander medieval streets, explore the iconic Waterford Crystal factory, and soak in scenic views along the Copper Coast. With vibrant culture, rich heritage, and warm hospitality, Waterford offers an unforgettable blend of past and present – perfect for curious travellers and history lovers alike.



Trinity College

DUBLIN

Ireland's capital, Dublin, offers an array of world-class attractions and unique experiences. Visit Dublin's Trinity College, home to the famous Book of Kells. Soak up the lively atmosphere along Grafton Street, renowned for talented street performers. Take a tour of the Guinness Storehouse located in the heart of St James's Gate Brewery. Dublin is also home to some of the friendliest locals you will ever meet.

SEE

- Marvel at the architectural wonder that is the Trinity College Library
- Take in a game of hurling or Gaelic football

DO

- Take a tour of Guinness Storehouse or the Jameson Distillery Bow Street (or both!)
- Learn more about Ireland's history at the GPO Museum or EPIC The Irish Emigration Museum

EAT & DRINK

- Enjoy a pint at the Brazen Head, Ireland's oldest pub which dates back to 1198
- Powerscourt Townhouse is one of Dublin's most iconic food destinations

WHAT'S ON

St Patrick's Day Festival

17 March

International Literature Festival Dublin

May (dates to be confirmed)

Bloomsday Festival

16 June

Taste of Dublin

June (dates to be confirmed)

Culture Night Dublin

18 September

Dublin Fringe Festival

September (dates to be confirmed)



REF.	HOTELS	PAGE
1	The Alex	50
2	Cassidys Hotel	50
3	Leonardo Hotel Dublin Christchurch	50
4	Leonardo Hotel Dublin Parnell Street	50
5	Temple Bar Hotel	50
6	The Westbury	50



Guinness Storehouse



Ha'penny Bridge, Dublin



DUBLIN HOP-ON HOP-OFF

Discover the key sights of Dublin on a traditional open top double decker bus. Highlights include the Guinness Storehouse and Trinity College.

Duration: 24 or 48 hours
Departs: Daily from 9am – 5pm, every 20 – 30 minutes (seasonal variations)

	Adult	Child 0-14 yrs
24 Hours	\$73*	\$26*
48 Hours	\$86*	\$37*



BEST OF DUBLIN WALKING TOUR

This walk takes you to many of Dublin's historic icons and brings you to some wonderful hidden spots too. If you are looking for a comprehensive tour that introduces you to the best of the city centre, on both sides of the River Liffey, then this is the tour for you.

Duration: 2 hours 30 minutes
Departs: From Dublin at 10:15am daily (Apr – Oct), Mon, Wed, Fri, Sat (Nov – Mar)

	Adult	Child 12-16 yrs
Walking Tour	\$66*	\$35*



EPIC THE IRISH EMIGRATION MUSEUM

EPIC is a cutting-edge museum exploring the journeys of 10 million Irish emigrants. Through 20 immersive galleries, discover stories of sacrifice, adventure, and global impact. Learn how Irish emigrants shaped the world and connect with the enduring legacy of Ireland's diaspora in this award-winning, interactive experience.

Open: 10am – 6:45pm daily

	Adult	Child 6-12 yrs
Admission	\$49*	\$25*



GUINNESS STOREHOUSE

Explore Dublin's Guinness Storehouse, built over seven floors in the shape of a pint. Discover the brand's rich history, learn to pour the perfect pint, and enjoy a complimentary Guinness with stunning 360° views from the Gravity Bar.

Duration: 2 hours
Departs: 9:30am – 7pm daily (Sep – Jun), 9am – 8pm daily (Jul – Aug)

	Adult	Child 5-17 yrs
Tour & Tasting	\$71*	\$33*



JAMESON DISTILLERY BOW STREET

Step into Jameson Distillery Bow St., Dublin's whiskey landmark since 1780. Enjoy the award-winning Bow St. Experience with guided storytelling, comparative whiskey tasting, and a journey through the distilling process. Discover the passion behind Ireland's most iconic whiskey.

Duration: 45 minutes
Open: 10am – 6pm daily (seasonal variations)

	Adult	Child 11-17 yrs
Tour & Tasting	\$69*	\$30*



MERRY PLOUGHBOY IRISH SHOW

Enjoy an evening of live traditional Irish music, songs, and dancing. The evening begins with dinner, before the entertainment commences with Ireland's leading traditional music group, The Merry Ploughboys, and all-Ireland and world champion Irish dancers perform a specially commissioned show.

Duration: 4 hours
Departs: Daily from Dublin at 6:10pm

	Adult	Child 0-17 yrs
Dinner, Show & Shuttle	\$171*	\$125*



BLARNEY CASTLE

Depart Dublin and head south through County Kildare to explore Ireland's majestic castles. Visit Blarney Castle and kiss the legendary stone. Discover the Rock of Cashel's ancient monastic beauty, then tour Cahir Castle, a well-preserved fortress on the River Suir. Each stop reveals Ireland's rich history before returning to Dublin.

Duration: 12 hours
Departs: Daily from Dublin at 6:50am

	Adult	Child 5-12 yrs
Sightseeing Tour	\$195*	\$98*



CLIFFS OF MOHER

Explore Ireland's natural beauty and cultural charm. Gaze over the majestic Cliffs of Moher, wander through Doolin's cozy cafés, and uncover the Burren's rare limestone terrain. Galway City enchants with medieval streets and lively music. Don't forget a Claddagh ring – a perfect keepsake from this unforgettable journey through Ireland's most scenic and spirited destinations.

Duration: 12 hours
Departs: Daily from Dublin at 6:50am

	Adult	Child 5-12 yrs
Sightseeing Tour	\$171*	\$86*



GIANT'S CAUSEWAY

From Dublin journey north to the hauntingly beautiful Dark Hedges, a dream for "Game of Thrones" fans. Follow the scenic Antrim Coast to the Giant's Causeway, a geological marvel shaped over millions of years and steeped in legend. In Belfast visit the Titanic Belfast®, where history and storytelling come alive before returning to Dublin.

Duration: 12 hours
Departs: Daily from Dublin at 6:20am

	Adult	Child 5-12 yrs
Sightseeing Tour	\$171*	\$86*

DUBLIN ACCOMMODATION

CASSIDYS HOTEL

◆◆◆



Cavendish Row, O'Connell Street, Dublin MAP PAGE 48 **From \$307*[^]**

- ❖ Boutique hotel set in beautiful Georgian building
- ❖ Wide selection of beer and wine offered at the bar
- ❖ Tastefully decorated rooms

Includes full Irish breakfast daily.

Location: Nestled in the heart of the city centre, opposite the famous Gate Theatre and close to museums and shopping district. Distances: Temple Bar 1.2km.

Property Features: Restaurants (2), Bar, Room service, 24 hour reception, Gym, Laundry/dry cleaning service, Parking (extra charge), 119 rooms.

Room Features: Cable TV, Tea/coffee making facilities, Hair dryer, Safe.

Max Capacity: Standard – 3, Heritage – 2.

[^]Price applies to Sun-Thu nights.



THE ALEX

◆◆◆◆



Standard

41-47 Fenian Street, Dublin MAP PAGE 48 **From \$492*[^]**

- ❖ Beautiful Art Deco styling
- ❖ Executive Rooms and Junior Suites offer Executive Lounge access

Includes full Irish breakfast daily.

Location: In the heart of Dublin city centre steps away from the capital's top landmarks, attractions and shopping streets. Distances: Temple Bar 1.5km.

Property Features: Garden terrace, Restaurant, Café, Bar, Room service, 24 hour reception, Gym, 103 rooms.

Room Features: Air-conditioning, Smart TV with Chromecast, Tea/coffee making facilities, Pillow menu, Hair dryer, Safe.

Max Capacity: Standard – 2 adults and 1 child, Executive/Junior Suite – 2.

[^]Price applies to Sun-Thu nights.



LEONARDO HOTEL DUBLIN CHRISTCHURCH

◆◆◆◆



Standard

8 Christchurch Place, Dublin MAP PAGE 48 **From \$312*[^]**

- ❖ Central city location
- ❖ Warm welcoming atmosphere at the hotel bar
- ❖ Spacious comfortable rooms

Location: Situated opposite Christ Church Cathedral and close to the popular Temple Bar district. Distances: Temple Bar 350m.

Property Features: Restaurant, Bar, Room service, Laundry/dry cleaning service, Lifts, 182 rooms.

Room Features: Cable TV, Tea/coffee making facilities, Pillow menu, Hair dryer.

Max Capacity: Standard/Executive – 2, Superior/Family – 3.



LEONARDO HOTEL DUBLIN PARNELL STREET

◆◆◆◆



Spacious

Moore Street Plaza, Parnell Street, Dublin MAP PAGE 48 **From \$239*[^]**

- ❖ Great views of Parnell Street from the hotel bar
- ❖ Traditional Irish breakfast served at the restaurant
- ❖ 24 hour, well-equipped fitness centre

Location: Positioned near historic O'Connell Street and walking distance to the literary and art districts. Distances: Temple Bar 1km.

Property Features: Restaurant, Bar, Room service, Fitness centre, Laundry/dry cleaning, 253 rooms.

Room Features: Air-conditioning, Cable TV, Tea/coffee making facilities, Pillow menu, Hair dryer.

Max Capacity: Spacious/Superior/Family – 3, Executive – 2.



TEMPLE BAR HOTEL

◆◆◆◆



Standard

13-17 Fleet Street, Temple Bar MAP PAGE 48 **From \$412*[^]**

- ❖ Boutique hotel in the heart of vibrant Temple Bar
- ❖ Join the locals for a drink at the Buskers Bar
- ❖ Welcoming rooms with contemporary decor

Includes breakfast daily.

Location: Situated in the very heart of Temple Bar, only minutes away from Grafton Street, Trinity College and the Guinness Storehouse. Distance: Temple Bar 500m.

Property Features: Restaurant, Bars (2), 24 hour reception, Parking (extra charge), Lift, 136 rooms.

Room Features: Tea/coffee making facilities, Ironing facilities, Hair dryer, Safe.

Max Capacity: Standard/Deluxe – 3, Executive – 2.

[^]Price applies to Sun-Thu nights.



THE WESTBURY

◆◆◆◆◆



Balfie Street, Dublin MAP PAGE 48 **From \$930*[^]**

- ❖ Bartenders mix cocktails at your table at the 1930s-style The Sidecar bar
- ❖ Nespresso coffee machines in all rooms

Includes full Irish breakfast daily.

Location: In central Dublin, with easy access to the social hub of Grafton Street and Trinity College. Distances: Temple Bar 750m.

Property Features: Restaurants (2), Bar, 24 hour room service, Gym, Laundry/dry cleaning service, Valet parking (extra charge), 205 rooms.

Room Features: Air-conditioning, 55" HD LED TV, Nespresso machine, Bathrobes and slippers.

Max Capacity: Classic/Deluxe/Westbury/Luxury Suite/Studio Suite/Signature Suite/Presidential Suite – 2.

[^]Price applies to Sun-Fri nights.



BELFAST TOURS & ACCOMMODATION



TITANIC BELFAST®

Visit the birthplace of the Titanic and experience the story. Titanic Belfast® extends over 9 galleries, drawing together special effects, dark rides, full-scale reconstructions and innovative interactive features. Explore the Titanic story in a fresh and insightful way; from her conception in Belfast in the early 1900s through to her construction and launch, to her infamous maiden voyage and catastrophic demise.

The journey goes beyond the aftermath of the sinking, to the discovery of the wreck and continues into the present day with a live undersea exploration centre.

Open: Mon to Sat 9am – 6pm,
Sun 10am – 5pm (Apr – May, Sep),
Daily 9am – 7pm (Jun – Aug),
Daily 10am – 5pm (Oct – Mar)

	Adult	Child 5-15 yrs
Admission with Audio Guide	\$73*	\$39*



BLACK CAB TAXI TOUR

Experienced and informative tour guides will take you on a unique historical and cultural experience through the streets of Belfast.

Visit the Falls Road and Shankill Road where you will learn of the history of conflict between the two communities and witness the Peaceline Wall which divides them. Gain an understanding of the many murals which are to be seen on the tours as well as many sites which have played important roles in the political history of Belfast.

Duration: 90 minutes
Departs: Daily from Belfast on request (Mar – Oct)

	1 Person	2 People	3 to 8 People
Sightseeing Tour	\$219*	\$110*	\$103*



GIANT'S CAUSEWAY TOUR

Enjoy the first stop of the day at Carrickfergus Castle, before travelling onward along the Causeway Coastal Route, stopping off at lovely places like Carnlough and the Caves at Cushendun. Travel along what has been voted one of the "Top 5 Scenic Drives in the World", where you'll also see towns and villages like Glenarm, Ballygally, Ballycastle, the Glens of Antrim, Cushendall and much more.

The highlight of the tour is definitely a visit to Giant's Causeway, Ireland's only World Heritage Site. Spend some time climbing over the ancient stones, snapping photos, and enjoying the myths and legends that surround this world-famous attraction. The final stop of the day is at the iconic Dark Hedges. Made famous by its appearance as The Kings Road in Game of Thrones, this picture-perfect location ends the tour on a high.

Duration: 9 hours 30 minutes
Departs: Daily from Belfast at 8:30am

	Adult/Child
Sightseeing Tour	\$98*

EUROPA BELFAST



Great Victoria Street, Belfast **From \$524*[^]**

- ❖ Modern and elegant rooms
- ❖ Traditional afternoon tea served daily
- ❖ Close to Great Victoria station

Includes full Irish breakfast daily.

Location: In the heart of Belfast city centre, opposite the Grand Opera House and surrounded by shops, bars and museums. Distances: Cathedral Quarter 1.2km.

Property Features: Restaurants (2), Bar, Room service, 24 hour reception, Laundry services, Luggage storage, Parking (off-site – extra charge), 272 rooms.

Room Features: Air conditioning, Cable TV, Tea/coffee making facilities, Ironing facilities, Hair dryer, Safe.

Max Capacity: Standard/Executive/Junior Suite/Presidential Suite – 3, Superior – 2.

[^]Price applies Sun-Fri nights.



LEONARDO HOTEL BELFAST



Great Victoria Street, Belfast **From \$140***

- ❖ Central city location
- ❖ Tasty bar menu of light snacks served at the hotel bar

Location: Situated in the heart of the city, only minutes from the Grand Opera House and Great Victoria Station. Distances: Cathedral Quarter 900m.

Property Features: Restaurant, Bar, Café, Room service, Laundry/dry cleaning service, Lift, 270 rooms.

Room Features: Cable TV, Tea/coffee making facilities, Pillow menu, Hair dryer.

Max Capacity: Spacious/Superior/Family – 3, Executive – 2.



FITZWILLIAM HOTEL BELFAST



1-3 Great Victoria Street, Belfast **From \$524*[^]**

- ❖ Elegant, well-appointed rooms
- ❖ Enjoy an Afternoon or Crafternoon Tea
- ❖ Relax with a cocktail in The Bar

Includes full Irish breakfast daily.

Location: In the heart of Belfast city centre, next to the Grand Opera House. Distances: Cathedral Quarter 1.1km.

Property Features: Restaurant, Bar, 24 hour reception, Laundry services, Parking (extra charge), 146 rooms.

Room Features: Air-conditioning, Mini bar, Tea/coffee making facilities, Ironing facilities, Pillow menu, Bathrobes and slippers, Hair dryer, Safe.

Max Capacity: Standard/Superior/Deluxe Junior Suite – 2.

[^]Price applies Sun-Fri nights.



*FROM PRICES ARE A GUIDE ONLY, subject to change and availability and are in Australian Dollars. Unless otherwise specified, prices for day tours and transfers are per person and prices for accommodation are per room per night for 2 people based on the lowest room category. All prices based on travel in low season. For full terms and conditions, refer to the Booking Conditions on the inside back cover of this brochure.

REGIONAL IRELAND ACCOMMODATION

LEONARDO HOTEL CORK



Spacious

Anderson's Quay, Cork

From **\$185***

- ❖ Chic bar boasts stunning views of the River Lee
- ❖ Pillow menu available for your comfort
- ❖ All-day café on-site

Location: Ideally situated along the River Lee and a short walk to Merchant's Quay. Distances: Town centre 500m.

Property Features: Restaurant, Bar, Café, Laundry/dry cleaning service, 133 rooms.

Room Features: Cable TV, Tea/coffee making facilities, Pillow menu, Hair dryer.

Max Capacity: Spacious – 3.



HARVEY'S POINT HOTEL, DONEGAL



Lough Eske Road, Friary, Donegal

From **\$319*^**

- ❖ Breathtaking mountain and lake views
 - ❖ Enjoy a decadent afternoon tea
 - ❖ Peaceful setting on the shores of Lough Eske
- Includes full Irish breakfast daily.**

Location: Set in the idyllic surroundings of Lough Eske with the Bluestack Mountains in the background, this property provides a peaceful base from which to explore Donegal. Distances: Town centre 8.1km.

Property Features: Restaurant, Bar, Room service, 24 hour reception, Laundry services, 101 rooms.

Room Features: Flat screen TV, Mini bar, Tea/coffee making facilities, Hair dryer.

Max Capacity: Executive/Deluxe/Premium – 2.

^Price applies to Sun-Thu nights.



LEONARDO HOTEL GALWAY



Spacious

Quay Street, Galway

From **\$299***

- ❖ The hotel bar boasts views of the Spanish Arch
- ❖ The largest beer garden in Galway
- ❖ Rooms feature bespoke 'Dream' beds

Location: Perfectly positioned in the heart of the historic city centre, overlooking Galway Bay. Distances: City centre 30m.

Property Features: Restaurant, Bars (2), Room service, Laundry/dry cleaning service, 130 rooms.

Room Features: Cable TV, Tea/coffee making facilities, Pillow menu, Hair dryer.

Max Capacity: Spacious – 3, Executive – 2.



THE VICTORIA, KILLARNEY



Muckross Road, Killarney

From **\$407*^**

- ❖ Boutique hotel with uniquely styled rooms
- ❖ Enjoy Afternoon Tea in the Drawing room
- ❖ Friendly, attentive and knowledgeable staff

Includes breakfast daily.

Location: Situated in a scenic area, adjacent to Killarney National Park, and within walking distance of the town. Distances: Town centre 2.2km.

Property Features: Terrace and garden, Restaurant, Bar, Room service, 24 hour reception, Laundry/dry cleaning service, Parking (free), Lift, 33 rooms.

Room Features: Flatscreen TV, Tea/coffee making facilities, Bathrobes, Hair dryer, Safe.

Max Capacity: Standard/Deluxe/Superior/Junior Suite – 2.

^Price applies Sun-Thu nights.



THE GEORGE HOTEL, LIMERICK



Standard

Shannon Street, Limerick

From **\$419***

- ❖ Surrounded by shopping and dining options
- ❖ Cosmopolitan boutique style accommodation
- ❖ Vincenzo Grill serves great cocktails

Includes full Irish breakfast daily.

Location: Right in the heart of the bustling city centre, just off O'Connell Street which is the city's main thoroughfare. Distances: Town centre 220m.

Property Features: Restaurant, Bar, Room service, 24 hour reception, Laundry services, Safety deposit facilities, Parking (free), 125 rooms.

Room Features: Flat screen TV, Tea/coffee making facilities, Ironing facilities, Hair dryer.

Max Capacity: Standard – 3.



FITZWILTON HOTEL, WATERFORD



Standard

Bridge Street, Waterford

From **\$319***

- ❖ Well-crafted dishes served at Chez K's
- ❖ Extensive gin and cocktail menu at Met Bar Café
- ❖ Spacious, stylish and comfortable rooms

Includes full Irish breakfast daily.

Location: Ideally situated in the centre of Waterford and just a short stroll from the Viking and cultural quarter and the main shopping area. Distances: City centre 1km.

Property Features: Restaurants (2), 24 hour room service, 24 hour reception, Parking (free), 90 rooms.

Room Features: Tea/coffee making facilities, Ironing facilities, Hair dryer, Safe.

Max Capacity: Standard – 3.



ABBEYGLEN CASTLE HOTEL



Sky Road, Clifden

From **\$465** * ^

- ❖ Built in 1832 with beautiful landscaped gardens
- ❖ Nightly reception with prosecco and canapés
- ❖ Enjoy live music nightly in the piano bar

Includes breakfast daily.

Location: In a stunning rural setting less than a kilometre from the centre of Clifden. Distances: Clifden city centre 900m, Galway 79km.

Property Features: Restaurant, Bar, 24 hour reception, Day spa, Tennis court, Parking (free), Lift, 54 rooms.

Room Features: 4 poster bed (Superior and Suite), Heating, Satellite TV, Tea/coffee making facilities, Ironing facilities, Bathrobe, Hair dryer, Safe.

Max Capacity: Standard/Deluxe/Junior Suite – 3, Superior – 2.

^Price applies Sun-Thu nights.



LOUGH RYNN CASTLE ESTATE & GARDENS



Mohill, County Leitrim

From **\$361** * ^

- ❖ A magnificent 200 year-old Victorian Manor House
- ❖ Expansive three-tiered walled garden
- ❖ Self-catering lodges are also available

Includes breakfast daily.

Location: Surrounded by 300 acres of walled gardens, the estate is situated on a narrow strip of land between Lough Rynn and Lough Erril. Distances: Mohill Town centre 5km, Roscommon 48.1km.

Property Features: Restaurant, Bar, Room service, 24 hour reception, Laundry/dry cleaning service, Luggage storage, Parking (free), 51 rooms.

Room Features: Heating, Flatscreen TV, Tea/coffee making facilities, Ironing facilities, Bathrobes, Hair dryer, Safe.

Max Capacity: Standard/Deluxe/Superior/Junior Suite – 3.

^Price applies Sun-Thu nights.



DROMOLAND CASTLE



Newmarket-on-Fergus

From **\$964** * ^

- ❖ Stunning Gothic Revival architecture with four castellated turrets
- ❖ A range of activities including falconry and golf

Includes full Irish breakfast daily.

Location: A short drive from Newmarket-on-Fergus, this castle hotel sits on a 500-acre estate, offering views of the River Shannon and Fergus. Distances: Newmarket-on-Fergus 3.4km, Limerick 29.7km.

Property Features: 18 hole championship golf course, Restaurant, Bar, 24 hour room service, Day spa, Tennis Court, Parking (free), 97 rooms.

Room Features: Flatscreen TV, Tea/coffee making facilities, Ironing facilities, Bathrobe, Hair dryer, Safe.

Max Capacity: Queen Anne/Suite – 2, Deluxe/Stateroom – 2 adults/2 children, Two Bedroom Suite – 4.



KILKEA CASTLE



Kilkea Demesne, Kildare

From **\$399** * ^

- ❖ Dating back to 1180, this is one of the oldest inhabited castles in Ireland
- ❖ Offers a range of activities

Includes full Irish breakfast daily.

Location: Set within 180 acres of gardens and woodland, offering a picturesque and serene setting in County Kildare. Distances: Castledermot town centre 5.3km, Carlow 15km.

Property Features: Restaurant, Bar, Room service, Gym, Day spa, Tennis court, Parking (free), 140 rooms.

Room Features: Flatscreen TV, Tea/coffee making facilities, Bathrobe and slippers, Hair dryer.

Max Capacity: Carriage/Castle/Lodge – 2.

^Price applies Sun-Thu nights.



ASHFORD CASTLE



Ashford Castle Drive, Cong

From **\$1159** * ^

- ❖ Ashford Castle's history dates back to 1228
- ❖ Some rooms offer lake views
- ❖ Home to Ireland's first and finest falconry school

Includes full Irish breakfast daily.

Location: On a 350-acre estate with manicured gardens, forests, and woodlands, overlooking the northern edge of Lough Corrib. Distances: Cong 750m, Galway 42km.

Property Features: Golf course, Pool, Restaurants, Bars, Room service, Day spa, Tennis Court, 83 rooms.

Room Features: Air conditioning, Flatscreen TV, Mini bar, Ironing facilities, Bathrobe, Hair dryer, Safe.

Max Capacity: Corrib/Deluxe/Stateroom/Suite – 2, Deluxe Family – 2 adults/2 children.



LOUGH ESKE CASTLE



Lough Eske, Donegal

From **\$472** * ^

- ❖ The castle was built in the 1860's
- ❖ Day spa featuring thermal suites, infinity pool, and bespoke treatments

Includes full Irish breakfast daily.

Location: Nestled on the shores of Lough Eske, and at the foot of the Blue Stack Mountains, this castle hotel is surrounded by 43 acres of woodland, about 15 minutes from Donegal Town. Distances: Donegal 6.7km.

Property Features: Infinity pool, Outdoor hot tubs, Restaurant, Bar, Day spa, Complimentary bicycle rental, Parking (free), 124 rooms.

Room Features: Flatscreen TV, Tea/coffee making facilities, Ironing facilities, Bathrobe, Hair dryer, Safe.

Max Capacity: Courtyard – 2, Family – 2 adults/1 child.

^Price applies Sun-Thu nights.



IRELAND TOURING



Carrick-a-Rede Rope Bridge, Northern Ireland

CAUSEWAY COASTAL 8 DAYS

DUBLIN – BELFAST – BALLYMENA – PORTRUSH – LONDONDERRY – ENNISKILLEN – DUBLIN

Day 1: Dublin

Arrive at Dublin Airport and pick up your rental car. Spend the rest of the day leisure. Overnight in Dublin.

Day 2: Dublin to Belfast (B)

Head to Belfast, travelling through the scenic Mourne Region. Consider visiting Down Cathedral and Castle Ward on the way. Arrive in Belfast, for an overnight stay and spend the remainder of the day exploring the city.

Day 3: Belfast to Ballymena (B)

Your Causeway Coastal adventure truly begins today. Be sure to stop at the Gobbins Cliff Path, Ballygally Castle, Carnfunnock Country Park and Glenarm Castle. Arrive in the town of Ballymena for your overnight stay.

Day 4: Ballymena to Portrush (B)

Today visit three of the north's most iconic attractions: the Dark Hedges, Carrick-a-Rede Rope Bridge and the Giant's Causeway. Spend the night at Portrush.

Day 5: Portrush to Londonderry (B)

Travel through lovely villages and enchanting landscapes on the way to Londonderry. Spend the night in Londonderry.

Day 6: Londonderry to Enniskillen (B)

Take time to explore the Donegal area as you travel to Enniskillen for the night.

Day 7: Enniskillen to Dublin (B)

Commence your journey back to Dublin travelling through the Boyne Valley, which is the ancient soul of Ireland. Arrive in Dublin for a final night's stay.

Day 8: Dublin (B)

Your adventure concludes when you return your car after breakfast.

(B = breakfast)

From **\$1433**^{**^} per person twin share

8 DAYS | DUBLIN TO DUBLIN

TRAVEL TYPE: Self drive

DEPARTS: Daily

HIGHLIGHTS

- Explore Northern Ireland's stunning Causeway Coast
- Visit Ireland's ancient Boyne Valley
- Discover Dublin's many attractions

INCLUDES

- 7 nights 3 and 4 star hotel and B&B accommodation
- Meals as specified
- Local taxes and service charges

[^] Does not include rental car or associated costs. Refer to page 10 for vehicle rental details. Suggested tours and admissions to sites and castles are not included, unless otherwise specified.



Cliffs of Moher

IRELAND, THE CLASSIC TOUR 8 DAYS

DUBLIN – GALWAY – KERRY – LIMERICK/CLARE – DUBLIN

Day 1: Dublin

Arrive at Dublin Airport and pick up your rental car. Spend the remainder of your day exploring all that Dublin has to offer. Overnight in Dublin.

Day 2: Dublin to Galway (B)

This morning enjoy a city tour of Dublin. Visit St Patrick's Cathedral, then stop off at the Jameson Distillery Bow Street (extra charge). In the afternoon depart Dublin for County Galway. Spend the next two nights in Galway.

Day 3: Galway (B)

Explore the Connemara area, with its granite mountains, heather covered hills, stone walls and thatched cottages. Continue through to the town of Clifden. Venture through the Irish speaking part of Southern Connemara and see the countless beautiful lakes.

Day 4: Galway to Kerry (B)

Travel through the Burren region and discover the area's unique plants and flowers. Drive along the coast of Clare to witness the spectacular Cliffs of Moher. Travel to Kerry. Spend the next two nights in Kerry.

Day 5: Kerry (B)

Tour the Iveragh Peninsula, taking in spectacular scenery. Leave Killarney and journey through Killorglin and Glenbeigh. See panoramic views of Dingle Peninsula and Dingle Bay. Continue to Cahersiveen, the sea town of Waterville and Sneem Village with its bright coloured houses. The road continues with superb views of the famous Lakes of Killarney.

Day 6: Kerry to Limerick/Clare (B)

Explore the Dingle Peninsula and the ring forts, high crosses and ancient monuments. Take in the dramatic landscape and admire the views of the Blasket Islands from Sleah Head. Overnight in Limerick or Clare.

Day 7: Limerick/Clare to Dublin (B)

Travel to Dublin and spend the afternoon at leisure exploring the city. Overnight in Dublin.

Day 8: Dublin (B)

Your adventure concludes when you return your car after breakfast.

(B = breakfast)

From **\$1117**^{**^} per person twin share

8 DAYS | DUBLIN TO DUBLIN

TRAVEL TYPE: Self drive

DEPARTS: Daily

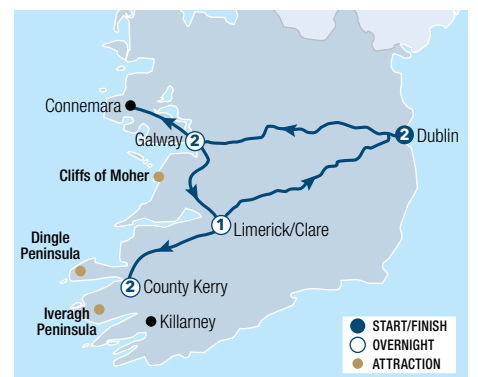
HIGHLIGHTS

- Dublin's St Patrick's Cathedral
- Drive along the Ring of Kerry
- Dingle Peninsula

INCLUDES

- 7 nights 3 and 4 star accommodation
- Meals as specified
- Local taxes and service charges

[^] Does not include rental car or associated costs. Refer to page 10 for vehicle rental details. Suggested tours and admissions to sites and castles are not included, unless otherwise specified. Prices for mixed (hotels and B&B) accommodation and Manor House accommodation also available.



^{**} FROM PRICES ARE A GUIDE ONLY, subject to change and availability and are in Australian Dollars. Prices are per person twin share, unless otherwise specified and based on the lowest room category and travel in low season. For full terms and conditions, refer to the Booking Conditions on the inside back cover of this brochure.



Dingle Peninsula

UNFORGETTABLE IRELAND 8 DAYS

DUBLIN – KERRY – LIMERICK – GALWAY – DUBLIN

Day 1: Dublin (D)

Arrive in Dublin and make your own way to your hotel. Enjoy free time to explore the city. Stay overnight in Dublin.

Day 2: Dublin to Kerry (B)

Travel to County Kerry, stopping at Blarney Castle and Estate, which is set in over 60 acres of stunning parkland and steeped in history. Later, enjoy some time shopping at Blarney Woollen Mills before continuing to Kerry. Spend the next two nights in Kerry.

Day 3: Ring of Kerry (B)

Today, enjoy a tour of the Iveragh Peninsula, discover the spectacular scenery of the Ring of Kerry. Stop at a local farm for a sheepdog demonstration.

Day 4: Kerry to Limerick (B)

This morning travel northwards to Tarbert and take a short boat ride across the River Shannon to Killimer. Travel along the coast to the majestic Cliffs of Moher. Next enjoy a tour of the Burren Region. Arrive in Limerick for an overnight stay.

Day 5: Limerick to Galway (BD)

Travel to Galway. Stroll down Shop Street, a charming pedestrianised street which is the cultural heartbeat of the city and visit Galway Cathedral. Later, enjoy a cruise along Lough Corrib, including scones and an Irish coffee. Stay the next two nights in Galway.

Day 6: Galway (B)

Today visit Connemara, a land of lakes and rivers, bogs and mountains and home to small villages where Gaelic is still the spoken language. Visit Kylemore Abbey and Dan O'Hara's homestead, where you will enjoy tea and scones.

Day 7: Galway to Dublin (B)

This morning, depart Galway for Dublin. Explore the city taking in sites such as the GPO and Phoenix Park, its vast Georgian squares, Trinity College, Dublin Castle and the Cathedrals. Visit EPIC, The Irish Emigration Museum. Spend the night in Dublin.

Day 8: Dublin (B)

Your tour ends after breakfast.

(B = breakfast, D = dinner)

From **\$3137*** per person twin share

8 DAYS | DUBLIN TO DUBLIN

TRAVEL TYPE: Escorted coach

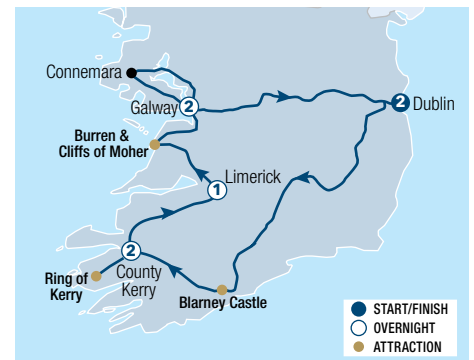
DEPARTS: Selected Tuesdays (7 Apr – 13 Oct 26)

HIGHLIGHTS

- Scenic drive of the Ring of Kerry
- Explore Dublin, Connemara and The Burren
- Discover Galway and Lough Corr

INCLUDES

- 7 nights 3 and 4 star accommodation
- Meals as specified
- Admission to Blarney Castle, Sheep Dog Demonstration, Cliffs of Moher, Galway Cathedral, Kylemore Abbey, Dan O'Hara's Homestead and EPIC The Irish Emigration Museum
- Ferry crossing from Tarbert to Killimer
- Lough Corrib Cruise
- Expert local guide
- Travel by air-conditioned motorcoach



Keem Bay, Achill Island

WILD ATLANTIC WAY 11 DAYS

DUBLIN – SLIGO/DONEGAL – MAYO – GALWAY – CLARE – KERRY – DUBLIN

Day 1: Dublin

Arrive at Dublin Airport and collect your rental car. Spend the day exploring at your leisure. Stroll along lively Grafton Street, visit Trinity College to view the Book of Kells and its stunning library. Overnight in Dublin.

Day 2: Dublin to Sligo/Donegal (B)

Head west to join the Wild Atlantic Way. In Sligo, visit Parkes Castle and enjoy a cruise on Lough Gill. Try a seaweed bath at Voya in Strandhill or Kilcullen's in Enniscrone. Spend two nights in Sligo/Donegal.

Day 3: Sligo/Donegal (B)

Explore Slieve League's towering cliffs, among Europe's highest. Visit Killybegs and cruise Teelin Harbour. Hike Knocknarea to see Queen Maebh's Cairn.

Day 4: Sligo/Donegal to Mayo (B)

Travel west to the Ceide Fields, the world's oldest known field system. Continue via Newport, known for fishing, and arrive in Mayo. Stay in Mayo for two nights.

Day 5: Mayo (B)

Discover Achill Island's outdoor adventures, visit Westport and take in the Atlantic Drive's stunning views.

Day 6: Mayo to Galway (B)

Drive south via Leenane and cruise Ireland's only fjord. Visit Kylemore Abbey, continue to Galway for the night.

Day 7: Galway to Clare (B)

Explore Galway. Visit the Burren and Cliffs of Moher, then Loop Head Peninsula. Overnight in Clare.

Day 8: Clare to Kerry (B)

Take the Shannon ferry to Kerry. Visit Foynes Flying Boat Museum, Tralee, and the Dingle Peninsula. Stay the next two nights in Kerry.

Day 9: Kerry (B)

Drive the Ring of Kerry. Visit Skellig Experience, Waterville, and Kenmare.

Day 10: Kerry to Dublin (B)

Visit Cork's English Market and the famous Shandon Bells of Cork. Stop at the Rock of Cashel. Return to Dublin.

Day 11: Dublin (B)

Return your rental car after breakfast. Tour ends.

(B = breakfast)

From **\$1798*[^]** per person twin share

11 DAYS | DUBLIN TO DUBLIN

TRAVEL TYPE: Self drive

DEPARTS: Daily

HIGHLIGHTS

- Cliffs at Slieve League
- The unique landscape of the Burren
- Breathtaking beauty of Achill Island
- The majestic Cliffs of Moher

INCLUDES

- 10 nights 3 and 4 star hotel and B&B accommodation
- Meals as specified
- Local taxes and service charges

[^] Does not include rental car or associated costs. Refer to page 10 for vehicle rental details. Suggested tours and admissions to sites and castles are not included, unless otherwise specified.



* FROM PRICES ARE A GUIDE ONLY, subject to change and availability and are in Australian Dollars. Prices are per person twin share, unless otherwise specified and based on the lowest room category and travel in low season. For full terms and conditions, refer to the Booking Conditions on the inside back cover of this brochure.

IRELAND TOURING



Giant's Causeway



Midleton Distillery Experience

EXPLORE IRELAND 12 DAYS

DUBLIN – BELFAST – DONEGAL – GALWAY – CORK – KILKENNY – DUBLIN

Day 1: Dublin

Arrive in Dublin and make your own way to your hotel. Enjoy free time to explore the city. Stay overnight in Dublin.

Day 2: Dublin to Belfast (B)

Depart towards Belfast, travelling through the Boyne Valley and the 5,000-year-old Hill of Tara, the seat of the ancient High Kings of Ireland. Stop at the Glyde Inn for a unique VR experience, where you won't just learn about being a Viking; you will become one. Continue to Hillsborough Castle, the official Royal Palace for Northern Ireland. Explore Hillsborough Castle's fascinating history and stunning State Rooms. Spend two nights in Belfast.

Day 3: Belfast City (B)

Enjoy a panoramic tour of Belfast's city centre and learn how Belfast developed from a small market town to an industrial giant. Pass by landmarks like City Hall and Queen's University before visiting Titanic Belfast®, an iconic landmark building where the story of Titanic is told. Enjoy the afternoon at leisure in Belfast.

Day 4: Belfast to Donegal (BD)

This morning travel along the spectacular North Antrim Coastline. Experience the highlight of any trip to Northern Ireland: The Giant's Causeway, where about 40,000 interlocking basalt columns were formed as a result of a volcanic eruption. The site was declared a World Heritage Site by UNESCO in 1986. Continue to Derry, Ireland's only fully intact walled city. The tour of Derry concludes with a walk along its historic walls. Continue to Donegal for an overnight stay.

Day 5: Donegal to Galway (BD)

The first stop today is Belleek Pottery which has been in business since 1857. See first-hand how this world-renowned pottery is created. Continue to the Marble Arch Caves and explore a fascinating, natural underworld of rivers, winding passages and lofty chambers. The caves, located in the heart of the UNESCO Global Geopark, were formed in limestone rock when water flowing through the rock slowly dissolved it to leave chambers and passages. Later travel to Galway where you will spend two nights.

Day 6: Galway (B)

Today, travel into County Clare and the Burren Region. Visit the Cliffs of Moher and take in the splendid views over the Atlantic Ocean. Rising to over 200 metres in places, they are among the highest sea cliffs in Western Europe and stretch for about eight kilometres along the Atlantic coast. Return to Galway to enjoy some time at leisure in the city.

Day 7: Galway to Cork (B)

Travel south towards Cork, passing through Limerick. In the afternoon visit Blarney Castle. Be sure to kiss the mythical Blarney Stone (or stone of eloquence), so that you can possess the gift of the gab. Arrive in Cork where you will spend two nights.

Day 8: Cork (B)

Today discover the highlights of the Ring of Kerry. Take in the spectacular scenery of Molls Gap and Ladies' View. Finish the day with a relaxing jaunting car ride in Killarney National Park. Step back in time by experiencing Ireland's most traditional mode of transport, the Jaunting car which a light two-wheeled open horse-drawn vehicle. Discover Killarney's most loved beauty hotspots while learning the area's history from your jarvey, many of whom are second and third generation jarveys.

Day 9: Cork to Kilkenny (B)

Visit the nearby Midleton Distillery Experience, founded by the Murphy Brothers in 1825, which still produces more than 24 million bottles of whiskey yearly. Finish the visit with a tasting of this famous Irish whiskey. Continue towards Waterford, where you will visit the House of Waterford. On the tour, you will see how Waterford Crystal masterpieces are crafted, from initial design to final engraving. Continue to Kilkenny for a two night stay.

Day 10: Kilkenny (B)

Visit the Dunbrody Famine Ship, a full-scale replica of the original ship built in 1845 which carried thousands of emigrants from Ireland to North America. The afternoon is free to discover this picturesque medieval city.

Day 11: Kilkenny to Dublin (B)

Return to Dublin where you will visit the EPIC Museum and find out why over 10 million people emigrated from Ireland. Enjoy the rest of the day at leisure to explore more of Dublin. Spend a final night in Dublin.

Day 12: Dublin (B)

Your tour ends after breakfast.

(B = breakfast, D = dinner)

From **\$5681*** per person twin share

12 DAYS | DUBLIN TO DUBLIN

TRAVEL TYPE: Escorted coach

DEPARTS: Selected Tuesdays (19 May – 6 Oct 26)

HIGHLIGHTS

- Scenic drive of the Causeway Coast and Ring of Kerry
- Explore Belfast
- Discover the Walled City of Derry
- Learn the art of whiskey making at the Midleton Distillery Experience
- Marvel the history of glass making in Waterford

INCLUDES

- 11 nights 3 and 4 star accommodation
- Meals as specified
- Admission to The Glyde Inn VR Experience, Hillsborough Castle, Titanic Belfast®, Giant's Causeway, Belleek Pottery, Marble Arch Caves, Cliffs of Moher, Blarney Castle, House of Waterford, Dunbrody Famine Ship, EPIC The Irish Emigration Museum
- Walking tour in Derry
- Jaunting Car ride in Killarney National Park
- Whiskey making at the Midleton Distillery Experience
- Expert local guide
- Travel by air-conditioned motorcoach



* FROM PRICES ARE A GUIDE ONLY, subject to change and availability and are in Australian Dollars. Prices are per person twin share, unless otherwise specified and based on the lowest room category and travel in low season. For full terms and conditions, refer to the Booking Conditions on the inside back cover of this brochure.



Kylemore Abbey, Ireland



Cliffs of Moher, Ireland

GRAND TOUR 13 DAYS

DUBLIN – CORK – COUNTY KERRY – LIMERICK/CLARE – GALWAY – DONEGAL/SLIGO – LONDONDERRY – BALLYMEA – DUBLIN

Day 1: Dublin

On your way to Cork visit Kilkenny. Kilkenny is home to one of the most instantly recognised buildings in Ireland, Kilkenny Castle which was built by the Anglo-Normans in the 12th century. Continue to Cork for an overnight stay.

Day 2: Dublin to Cork (B)

Before you leave Cork explore the English Market, a roofed food market that has been trading since 1788. Alternatively visit the Titanic Experience in Cobh. Head to County Kerry where you will stay for two nights.

Day 3: Cork to County Kerry (B)

Today head to the town of Killarney and visit Killarney National Park and onward to the Ring of Kerry. Travelling the Ring of Kerry takes you along the Atlantic Coast and is one of the highlights of any trip to Ireland. Return to your County Kerry hotel.

Day 4: County Kerry (B)

Today, enjoy another beautiful scenic route. The Dingle Peninsula has something to offer everyone – sandy beaches safe for swimming, a thriving Irish language community, a rich musical tradition, fine dining, talented artisans and some of the best surfing in Ireland. Before you arrive in Limerick, pass by Adare and visit Desmond Castle. Spend the night in the Limerick or Clare.

Day 5: County Kerry to Limerick/Clare (B)

On the way to Galway you will cross the Burren region, which is often likened to a moonscape because of the lack of vegetation. Soon after that you will arrive at the Cliffs of Moher which rise 215 metres out of the Atlantic and stretch for more than seven kilometres. Continue to Galway, a lively city with a wonderful avant-garde culture. Stay in Galway for two nights.

Day 6: Limerick/Clare to Galway (B)

Discover the wilderness of Connemara. Connemara is without doubt the wildest and most romantic part of Ireland. Be sure to visit Kylemore Abbey, which is bewitchingly hidden between mountains and lakes and surrounded by rhododendrons. Later, visit Connemara National Park before returning to Galway.

Day 7: Galway (B)

On your way through Sligo you can visit the Carrowmore Megalithic Cemetery. The cemetery has over 60 stone circles and passage tombs making it one of the largest Stone Age cemeteries in Europe. After your visit continue to Donegal or Sligo where you will spend two nights.

Day 8: Galway to Donegal/Sligo (B)

Consider visiting the Slieve League Cliffs. Europe's highest sea cliffs, although less famous than the Cliffs of Moher in County Clare, Slieve League Cliffs reach almost three times higher. You could visit spectacular Glenveagh National Park, 40,000 acres of scenic mountains, lakes, glens and woods, with a herd of red deer.

Day 9: Donegal/Sligo (B)

Travel to Londonderry, the colourful and well-preserved historical city, which boasts good shopping, pubs and cafés. Stay in Londonderry overnight.

Day 10: Donegal/Sligo to Londonderry (B)

On the way to Ballymea be sure to visit the Giant's Causeway, a UNESCO World Heritage site. The Old Bushmills Distillery is also another great option to visit, its guided tour finishes in the distillery pub with a tasting. Overnight in Ballymea.

Day 11: Londonderry to Ballymea (B)

Visit Belfast and the historical Boyne Valley on your way back to Dublin and your final night.

Day 12: Ballymea to Dublin (B)

Your adventure concludes when you return your car after breakfast.

Day 13: Dublin (B)

(B = breakfast)

From **\$1969**^{**^} per person twin share

13 DAYS | DUBLIN TO DUBLIN

TRAVEL TYPE: Self drive

DEPARTS: Daily

HIGHLIGHTS

- Travel The Ring of Kerry
- See the spectacular Cliff of Moher
- Visit vibrant Galway
- Walk the ancient walls of Londonderry

INCLUDES

- 12 nights 3 and 4 star hotel and B&B accommodation
- Meals as specified
- Local taxes and service charges

[^] Does not include rental car or associated costs. Refer to page 10 for vehicle rental details. Suggested tours and admissions to sites and castles are not included, unless otherwise specified.



ACCOMMODATION INDEX

ENGLAND

LONDON

44 Curzon Street Apartments by Mansley.....	24
Alexandra Hotel.....	23
The Biltmore Mayfair.....	27
Cartwright Gardens Apartments.....	23
The Clermont Victoria.....	25
Collingham Serviced Apartments.....	24
Commodore Hotel.....	23
Copthorne Tara Hotel.....	25
The Gate London City.....	25
GEM Strathmore Hotel.....	25
Grand Plaza Serviced Apartments.....	25
K Hotel Kensington.....	23
Leonardo Royal Hotel London Tower Bridge.....	25
The Marble Arch Hotel by Thistle.....	26
My Place Hotel.....	23
No. 1 The Mansions by Mansley.....	26
Phoenix Hotel.....	23
Presidential Kensington Serviced Apartments.....	26
The Resident Victoria.....	26
The Royal National Hotel.....	24
St Giles London.....	24
Strand Palace Hotel.....	27
Thistle Hyde Park Kensington Gardens.....	27
The Tower Hotel by Thistle.....	27
Tower Suites by Blue Orchid.....	27
The Wellington by Blue Orchid.....	27

REGIONAL ENGLAND

Clayton Hotel Cambridge.....	28
Copthorne Hotel Newcastle.....	29
Copthorne Manchester Salford Quays.....	29
Crescent Place by Mansley, Cheltenham.....	28
Holiday Inn York City Centre.....	29
Hotel Indigo Bath.....	28
Leonardo Hotel Southampton.....	29
Macdonald Alverston Manor, Stratford-upon-Avon.....	29
The Resident Liverpool.....	29

SCOTLAND

EDINBURGH

Adagio Edinburgh Royal Mile.....	39
Braid Apartments by Mansley.....	39
Cairn Hotel Edinburgh.....	39
The Knight Residence by Mansley.....	39
Leonardo Hotel Edinburgh Haymarket.....	39
Leonardo Royal Hotel Edinburgh.....	39
Market Street Hotel.....	40
The Resident Edinburgh.....	40
Sheraton Grand Hotel & Spa, Edinburgh.....	40
Ten Hill Place Hotel.....	40
Virgin Hotels Edinburgh.....	40
voco Edinburgh Haymarket.....	40

REGIONAL SCOTLAND

The Address Glasgow.....	45
Best Western Inverness Hotel & Spa.....	45
Copthorne Hotel Aberdeen.....	45

Highland Apartments by Mansley.....	45
Leonardo Hotel Glasgow.....	45
Millennium Hotel Glasgow.....	45

THE ISLE OF IRELAND

DUBLIN

The Alex.....	50
Cassidys Hotel.....	50
Leonardo Hotel Dublin Christchurch.....	50
Leonardo Hotel Dublin Parnell Street.....	50
Temple Bar Hotel.....	50
The Westbury.....	50

BELFAST

Europa Belfast.....	51
Fitzwilliam Hotel Belfast.....	51
Leonardo Hotel Belfast.....	51

REGIONAL IRELAND

Abbeyglen Castle Hotel.....	53
Ashford Castle.....	53
Dromoland Castle.....	53
Fitzwilton Hotel.....	52
The George Hotel.....	52
Harvey's Point Hotel.....	52
Kilkea Castle.....	53
Leonardo Hotel Cork.....	52
Leonardo Hotel Galway.....	52
Lough Eske Castle.....	53
Lough Rynn Castle Estate & Gardens.....	53
The Victoria.....	52



Dunluce Castle, Ireland

Please read these Booking Conditions carefully as they apply to all bookings with Viva Holidays.

HOW TO BOOK

Contact your ATIA travel agent and request a reservation. All verbal quotes provided are an estimate only and subject to change until confirmed in writing.

PRICES & CONDITIONS

This brochure was produced on 3 September 2025. Unless otherwise stated, prices are in Australian dollars and include GST where applicable. Exchange rates used when pricing this brochure are as at 26 August 2025. All prices are subject to availability, subject to change and can be withdrawn or varied without notice. Prices are to be used as a guide only. Accommodation prices are based on the lowest room category in low season. All other prices are based on travel in low season. Some prices are based on dynamic rates, which means the price may be higher or lower than the advertised price if the price has been varied by the supplier after this brochure was printed. Price changes may occur by reason of matters outside our control which increase the cost of the Product or Service. Such factors include (without limitation) adverse currency fluctuations, fuel surcharges, or increases to taxes. Surcharges and minimum stays may apply due to demand, Christmas and New Year's Eve, school and public holidays, special events and other circumstances. All prices are the lowest available prices at the time of print and are a guide only. Please check all prices, availability, fees, conditions and information with your travel agent before booking.

If we must change any part of your booking for reasons beyond our control, for example, an Accommodation Supplier overbooks accommodation, or if there is an increase in taxes or Supplier charges, we will notify you. If any such changes result in your holiday costing more or otherwise being materially different from that originally booked, you may cancel the booking and we will refund any monies already paid less any charges levied by Suppliers.

PRICES DO NOT INCLUDE

Anything not specifically indicated as being an inclusion.

OMISSIONS & ERRORS

While every effort is made to ensure the accuracy and currency of the information in the brochures, errors or omissions may occur. All errors and omissions identified post the date of publication are notified to our retail partners to advise you. Please check with your agent for all up-to-date corrections, including prices and inclusions.

DEPOSITS & FINAL PAYMENTS

Deposit

A minimum non-refundable deposit of \$55 per person is payable within 7 days of confirmation of your booking. You will be notified at the time of booking if any additional deposit is required. All deposits are non-refundable for changes of mind or cancellations by you (subject to your rights under the Australian Consumer Law).

Final Payment

Final payment of your holiday cost is required no later than 30 days prior to departure or by sale end date or by the payment deadline specified in individual package conditions, whichever is earlier. Some services may require full payment at the time of booking. For bookings made less than 31 days prior to travel, full payment of holiday cost is required at the time your booking is confirmed.

Please ensure payments are made by the due dates. If this does not happen, our system will automatically cancel the booking without notice or liability to you.

Only upon payment of the full cost of your holiday do you have a final booking with the Supplier of the relevant good and/or service. In arranging your booking, Viva Holidays is acting as the agent of the Supplier of the relevant Product and at no time do you have a contract with Viva Holidays.

CREDIT & DEBIT CARD SURCHARGES

A fee will apply for payments made by debit and credit cards. Fees may vary depending on card type. Please check this fee with us or your travel agent when booking.

FEEES

Amendment Fees

If you wish to change your booking prior to departure, an amendment fee of \$30 will be charged if the overall value of the booking remains the same or decreases, in addition to any fees imposed by the Supplier of each service booked.

Late Booking Fees

A fee of \$30 will be charged for all bookings made less than 7 days prior to travel.

All fees can be varied without notice.

CANCELLATIONS & REFUNDS

Prior to Final Payment

Your deposit is forfeited.

After Final Payment

There will be no refund of your deposit, in addition to any fees imposed by the Supplier, which may be up to 100% of monies paid.

After Travel

There will be no refund if you cancel your booking once travel has commenced. There will be no refund for unused services, except for OPEN DATED services where the service was not booked with the Supplier. Requests for refunds received more than 6 months after departure date will not be accepted.

Should a refund after departure be approved, a \$110 refund processing fee will apply.

RESPONSIBILITY

Viva Holidays acts as an agent for the Suppliers (transport, tour, event or accommodation providers) who provide the various goods and/or services (Products). All bookings are subject to the terms and conditions and limitations of liability imposed by each Supplier. It is therefore important for you to obtain and read the applicable Supplier's terms and conditions as they may limit or exclude their liability to you.

In producing this brochure, we have used information provided by Suppliers. Irrespective of any measures taken by us to ensure the information contained in this brochure is accurate at the time of printing, Viva Holidays disclaims and will be exempt from liability in respect of anything misleading, false, incomplete or inaccurate and any errors, misdescription and all associated disappointment, loss, expense, damage, inconvenience, delay, death, shock, illness or injury, however caused.

Viva Holidays does not control the manner in which Products featured within this brochure are provided. Viva Holidays disclaims and will be exempt from liability for anything to do with the supply of such Products. This includes liability (whether as a matter of contract, tort, statute, restitution, or otherwise) for any direct, indirect or consequential loss, liability, claim, cost, expense, proceeding, demand, penalty, disappointment, death, injury, illness, shock, inconvenience or delay. This limitation of liability also applies irrespective of the cause, including negligence of us or a Supplier, withdrawal, cancellation or failure to provide a Product, delay, any variation in the Product, the provision of substitute Products or a change in the Supplier. Without limitation, Viva Holidays will not be responsible if the Product is not available due to inclement weather conditions or other acts of God, civil disturbances, fire, floods, acts of Government or any other authorities, accident to or failure of machinery or equipment or industrial action.

MAPS & PHOTOGRAPHS

The maps in this brochure are intended as a guide only and are not to scale. They do not necessarily reflect actual routings or accommodation or attraction locations. Accommodation room photographs are representative only and actual rooms occupied may vary in decor and inclusions from those shown.

Some images used in this brochure are supplied courtesy of tourist bureaus, hotels, tour operators, ©Visit Scotland/ Andy E/Kenny Lam/Quintin Lake, Tourism Ireland/Diage/ Julia Weigl, Joseph Carr Photography, ©Johan Persson/ ABBA Voyage, Abacapress/Darren Lennon, Adrian Wroth, Brinkhoff/Moegenburg, Colm Kerr Photography, David Cantwell Photography, Derek Godridge, Graham W Lacrodao, ©Izmocars, Naomi Vance Photography, Neil Hewison, Robert Rieger, ©Stefan Zander, Stephen Hyde, Thomas Slack, Tibor Silva and Veerle Evens.

PRODUCT DESCRIPTIONS

Product descriptions and accommodation ratings featured in this brochure are provided by the individual Suppliers. Facilities, features or ratings are subject to change at any time. Tours may not operate on certain dates and durations and departure times are approximate only. You should check at the time of booking for any changes to published information of which we may be aware.

BONDS

Bonds or credit card imprints are required by most Suppliers at the time of check-in to cover incidentals and fees not included in your holiday cost.

TRANSFERS & TOURS

Some Accommodation Suppliers provide courtesy transfers to/from the airport. It is essential that these transfers are pre-booked. Some Tour Suppliers provide complimentary pick up and return to your holiday accommodation and require a minimum number of passengers to operate. If minimum numbers are not achieved tours may be cancelled at short notice. Additionally, some Suppliers reserve the right to cancel departures for other reasons, including bad weather. Some tours and itineraries may also vary and attractions may be substituted due to seasonal conditions. Viva Holidays will not be held liable for a service variation, cancellation, delay or withdrawal, or a Supplier's failure to notify you. A full refund applies for the cancelled tour.

TRAVEL INSURANCE

We strongly recommend you take out appropriate travel insurance to cover your travel arrangements.

INTERNATIONAL TRAVEL

Each passenger is responsible for their own visa, passport (with at least 6 months validity), immigration, quarantine, customs and other requirements of the countries to be visited or transited through. Viva Holidays makes no representations as to the safety, conditions or other issues that may arise at any destination. Travel advice is available from the Australian Government at smartraveller.gov.au.

HEALTH

You must ensure you are aware of any health requirements and recommended precautions relevant to your travel and carry all necessary vaccination documentation with you to the countries to be visited. Failure to present required vaccination documentation may result in you being denied entry into a country. We recommend that you consult with your local doctor, travel medical service or specialist vaccination clinic before commencing your travel. General health advice for all destinations is also available from the Australian Government at smartraveller.gov.au.

PRIVACY

Viva Holidays collects information about you (including health information where necessary) to provide products and services to you, process your travel arrangements, facilitate your participation in loyalty programs and conduct marketing activities and market research. If the information is not provided, Viva Holidays may not be able to provide the Service requested. Viva Holidays may disclose your personal information to its related companies, carriers, travel service providers, organisations which provide services to Viva Holidays (more details are available in our Privacy Statement on our website vivaholidays.com.au) and various law enforcement agencies, airports and governments around the world for security, customs and immigration purposes. You may gain access to the information Viva Holidays holds about you by contacting our Privacy Officer in writing at 179 Normanby Road, South Melbourne VIC 3205 Australia or on privacyofficer@vivaholidays.com.au.

MONIES NOT HELD ON TRUST

All monies paid by you to us will be the property of Viva Holidays and will be a debt due and payable to the relevant Supplier (contingent on availing) once the services to which the money relates have been availed, or the relevant booking is cancelled (subject to cancellation fees). You agree and acknowledge that such monies will not be held by Viva Holidays on trust for or on behalf of you, and we may hold such monies in any account as we see fit, including with our own and/or other customer monies.

GOVERNING LAW

These conditions are governed by the laws of Victoria, Australia and any action arising under them or in any way connected with a booking may be brought only in a court in Victoria, Australia, subject to any law which is expressly inconsistent with this.

You acknowledge that you are 18 years of age or older and that you understand and agree with the above terms and conditions and our Privacy Policy. Please read our full booking terms and conditions at vivaholidays.com.au/policies/booking-conditions.



Glencoe, Scotland

To book, see your preferred Travel Agent or [vivaholidays.com.au](https://www.vivaholidays.com.au) for information

YOUR VIVA HOLIDAYS PREFERRED AGENT:

**VIVA
HOLIDAYS**

Reservations: 1300 872 835 | online.enquiries@vivaholidays.com.au
Travel Agents Reservations: 13 27 87 | reservations@vivaholidays.com.au

