

VIVA
HOLIDAYS

WESTERN AUSTRALIA



2026-2027



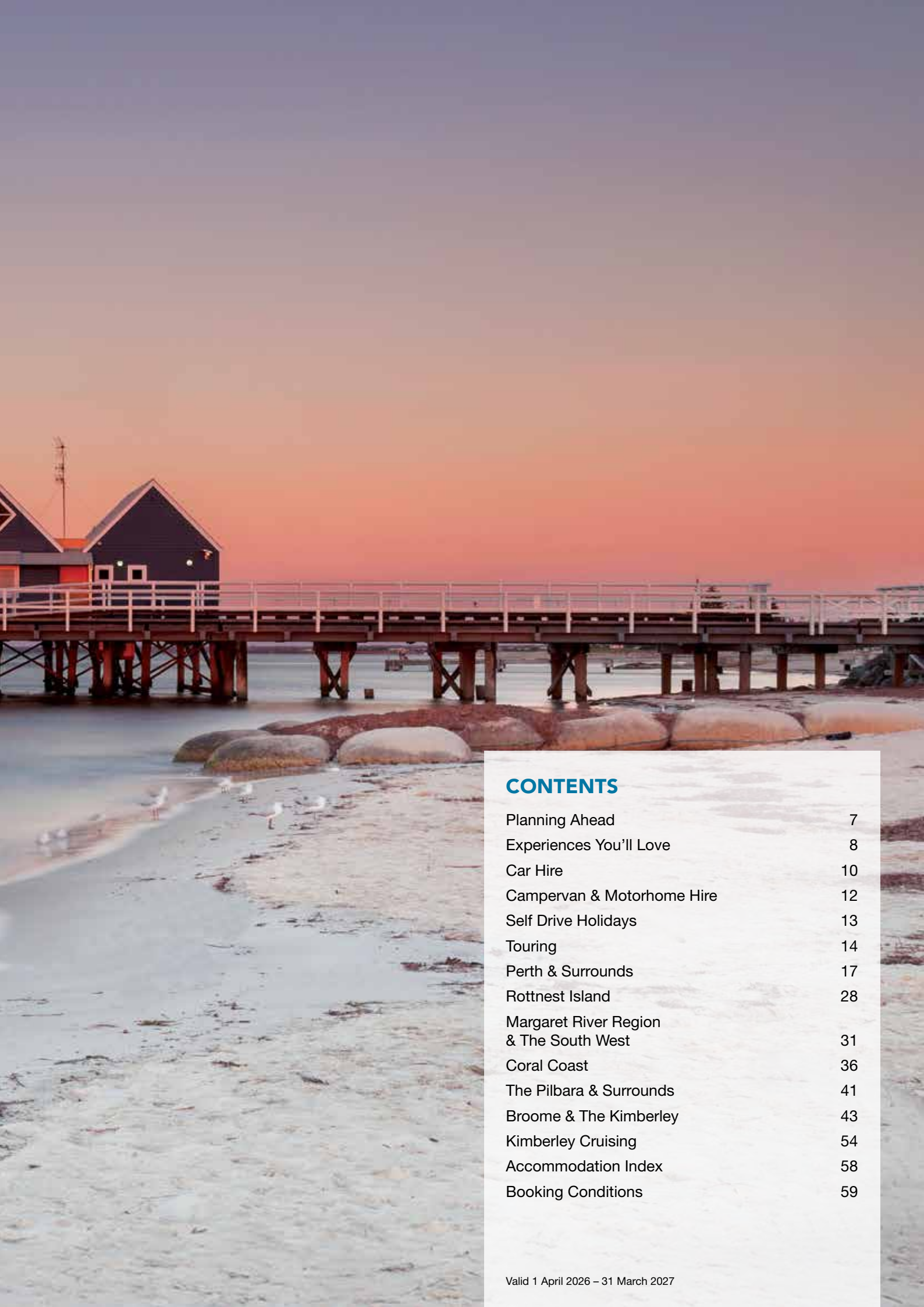
EXPERIENCE WESTERN AUSTRALIA WITH VIVA HOLIDAYS!

Visit cosmopolitan Perth, buzzing with rooftop bars, hidden laneways, restaurants and cafés. Sample gourmet food and wine in the Margaret River region and snorkel UNESCO World Heritage Listed Ningaloo Reef. Walk on the moonscape of the Pinnacles Desert in Nambung National Park and see the unique rock formations that make up the Bungle Bungles in Purnululu National Park. For a different perspective, relax on a cruise through the Kimberley region. As diverse as it is vast, there are plenty of reasons to holiday in Western Australia.

With over 50 years of experience in the travel business, trust us to make your dream Western Australian holiday a reality.

CHOOSE VIVA HOLIDAYS AND LIVE A LIFE OF TRAVEL.





CONTENTS

Planning Ahead	7
Experiences You'll Love	8
Car Hire	10
Campervan & Motorhome Hire	12
Self Drive Holidays	13
Touring	14
Perth & Surrounds	17
Rottneest Island	28
Margaret River Region & The South West	31
Coral Coast	36
The Pilbara & Surrounds	41
Broome & The Kimberley	43
Kimberley Cruising	54
Accommodation Index	58
Booking Conditions	59

WHY CHOOSE VIVA HOLIDAYS

Viva Holidays has been creating exceptional worldwide holiday experiences for over 50 years. Your arrangements will be managed by our local travel specialists who are experts in designing holidays to perfectly suit your travel needs. You'll always be in experienced hands when you book with Viva Holidays.

MORE CHOICE

Our exclusive product range caters for every type of holiday. Accommodation, car hire, theme parks, attractions, day and extended tours, rail and cruises - we've got it covered.

With incredible deals available throughout the year, make sure you ask your travel agent for our best offers.

EXCEPTIONAL SERVICE

Exceptional customer service is behind everything we do. That's why we were recognised as the Most Outstanding Wholesaler – Product/Service in 2023 and 2024 at the National Travel Industry Awards. Our Australian-based team are passionate about travel and providing outstanding service. Let us do the research, planning and booking to ensure your holiday is one you'll always remember.



PEACE OF MIND

Viva Holidays is a proud member of ATIA Accreditation, the Australian Travel Industry Association's accreditation scheme that sets the benchmark of quality for the travel industry. When you book your holiday with Viva Holidays, you will have peace of mind knowing that you are booking with one of Australia's most trusted travel companies.

24/7 ASSISTANCE

When you book with Viva Holidays, you'll never be on your own. In the event of unforeseen circumstances, our customer care team is available 24 hours a day, seven days a week.

TAILOR MADE HOLIDAYS

Whether it's swimming with whale sharks at Ningaloo, sampling a crisp chardonnay in the Margaret River region or getting up close and personal with a friendly quokka on Rottnest Island, our team of travel specialists can design a custom made itinerary just for you!

Let us create your dream holiday today.

LIVE A LIFE OF TRAVEL. LET VIVA HOLIDAYS TAKE YOU THERE!







WESTERN AUSTRALIA

PLANNING AHEAD

Western Australia is a wonderful place to visit all year round. Before you begin your next trip, make sure to read our helpful travel information, to ensure you make the most of your time in the Wildflower state of Australia.



Wilanup Lookout, Leeuwin-Naturaliste National Park, Margaret River Region

Courtesy of Tourism Western Australia



Northern Territory

South Australia

WHEN TO GO

Most of Western Australia offers a temperate climate with four distinct seasons throughout the year. The Broome and the Kimberley region has two distinct seasons. The dry season (April to September) brings bright sunny days and cool nights and the green season (October to March) is hot and humid with short downpours in the late afternoon and evening. During the green season, some attractions may not be accessible due to road closures and local flooding.

GETTING AROUND

Take the time to explore and discover as you make your way through Western Australia by road. We offer a selection of suggested driving itineraries, providing you with the freedom to see Western Australia at your own pace. See page 10 and 11 for car hire, page 12 for campervan and motorhome options and page 13 for Self Drive Holidays.

Travellers should drive at a speed that suits the road, vehicle, weather conditions and driving experience. Avoid driving after dark as cattle and wildlife often congregate alongside outback highways.

During the summer period (October to March) in the Kimberley, road closures due to flooding are common, particularly on unsealed roads. Road trains are a unique aspect of travelling in this region. They can be up to 50 metres in length and extra care should be taken when overtaking.

ABORIGINAL CULTURE

Transit permits to visit indigenous communities are granted through the Aboriginal Lands Trust and are designed to help preserve Aboriginal heritage and culture. We recommend always choosing a tour where operators already have permission to enter the land.

NATIONAL & ATTRACTION PARK PASSES

All visitors must purchase a National Park Pass or Attraction Pass prior to entering most National Parks and Conservation Parks. As this fee is not payable directly to the accommodation or tour operator, and because there are numerous options available, this fee is not included in the prices for accommodation and tour listings in this brochure, unless otherwise specified. For details on the various options available and how to purchase passes, visit exploreparks.dbca.wa.gov.au/fees.

WATER SAFETY

Australia has some of the world's best beaches, however care and caution should be exercised at all times. Please remember to swim between the red and yellow flags and listen to instructions from lifesavers and lifeguards. Marine stingers are most prevalent along the Kimberley coastline from November to April. In remote parts of the Kimberley, Salt and Freshwater crocodiles are found in estuaries, rivers and billabongs, so always observe warning signs. If you are not sure, do not swim.

TEMPERATURE & RAINFALL

Perth	J	F	M	A	M	J	J	A	S	O	N	D
Temperature (max °C)	30	31	29	25	22	19	18	18	20	22	25	28
Average rainfall (mm)	7	16	15	44	111	175	169	114	71	51	23	11
Margaret River	J	F	M	A	M	J	J	A	S	O	N	D
Temperature (max °C)	27	27	26	23	20	18	17	17	18	20	23	25
Average rainfall (mm)	12	12	28	63	133	180	194	158	109	64	35	18
Exmouth	J	F	M	A	M	J	J	A	S	O	N	D
Temperature (max °C)	38	38	37	33	29	25	24	27	30	33	35	37
Average rainfall (mm)	27	38	40	19	41	43	21	12	2	1	2	6
Broome	J	F	M	A	M	J	J	A	S	O	N	D
Temperature (max °C)	33	33	34	34	31	29	28	30	31	32	33	34
Average rainfall (mm)	183	177	99	25	27	19	6	2	1	1	9	62

EXPERIENCES YOU'LL LOVE

The best part of any journey is the experiences you have along the way, leaving you with memories to relive long after the holiday is over.

Western Australia has countless amazing things to see and do. Here are some of our favourites to inspire your wanderlust.





SAY HI TO A QUOKKA

Blessed with picturesque scenery, Rottneest Island is just a short ferry ride from Perth but a world away from city life. Hire a bike and cycle around the island, join a guided walking tour or grab some snorkeling gear to discover the underwater snorkel trails. And don't forget to keep an eye out for the cutest inhabitant of Rottneest Island – the Quokka!



SWIM WITH A WHALE SHARK

Western Australia is big on incredible animal encounters. Swim alongside the gentle Whale sharks in the pristine waters of the Ningaloo Marine Park between March and August and marvel at the size of the biggest fish in the world. Watch in awe as they glide gracefully past your boat oblivious to life above the water, an experience not to be missed. Fortunately for land-dwellers, their favourite meal is plankton.



CRUISING THE KIMBERLEY

One of the best ways to discover the rugged, untouched beauty of the Kimberley coast is on an expedition cruise. Red ochre, sandstone cliffs carved by powerful forces of nature, cascading waterfalls and pristine beaches are waiting to be explored. Choose from a range of all-inclusive cruises departing from Broome, Wyndham and Darwin, between April and October.



WINE O'CLOCK

Wine lovers rejoice! Visit world-renowned Margaret River with over 200 vineyards or Swan Valley, the state's oldest wine region. Cellar door hop and sample award-winning wines along with local gourmet delights. If wine doesn't tempt your taste buds, there are plenty of great local breweries and distilleries offering craft beer and spirits to try too.



TAKE FLIGHT OVER PURNULULU NATIONAL PARK

The majestic orange and black striped beehive domes – the Bungle Bungle Range – are one of Australia's most unusual and fascinating landforms. For the best views over the national park, opt for a plane or helicopter flight. If you are feeling adventurous, hike into the range and explore Echidna Chasm, Cathedral Gorge and Piccaninny Creek.



EXPLORE THE PINNACLES

Discover one of Australia's most intriguing landscapes in Nambung National Park. The Pinnacles Desert showcases a lunar-like landscape consisting of thousands of tall limestone spires, shaped over millions of years by the forces of water and wind. For a bird's eye perspective, make your way to the Pinnacles Lookout to view the little Painted Desert and the unusual white dunes.

CAR HIRE



AVIS

Why not add Avis to your travel plans and make the most of your holiday by enjoying the flexibility and convenience that an Avis car rental provides.

Situated at all major airports and city locations and offering a wide range of late model vehicles to choose from, all at great rates, renting with Avis is sure to make your holiday escape more enjoyable. All Avis vehicles are air-conditioned and come with Mechanical Breakdown Assistance. Plus you get unlimited kilometres in Metropolitan and Country areas as well as free maps to help you find your destination.

Includes:

- Loss Damage Waiver • Administration Fee
- Vehicle Registration Fee • GST
- Concession Recovery Fee/Premium Location Surcharge
- Excess Reduction (Zero Excess option), at participating locations only
- All vehicles include: air-conditioning, ABS and dual airbags

Car rentals commencing in Metropolitan and Country locations include unlimited kilometres. Rentals commencing in Remote locations include 100 kilometres per day with excess kilometres charged at 27.5c per kilometre.

Does Not Include:

- Excess Reduction (Basic Excess option) • Fuel
- One way rental fees • Tolls • Learmonth Service Fee
- Products purchased at rental counter

Excess:

An excess of \$5,900* applies to vehicle Groups C, D, S, and K, while Groups W, H, and V carry a standard excess of \$6,500*. To reduce your liability, optional Excess Reduction is available for an additional fee of \$36.90* per day for Groups C, D, S, and K, lowering the excess to \$1,000*, or \$39.21* per day for Groups W, H, and V, reducing the excess to \$1,500*. For complete coverage, a Zero Excess option is also available, eliminating the excess entirely. All prices above include administration fees, credit card surcharges, and GST, and are subject to Avis Rental Terms and Conditions.

Restricted Access:

Rentals commencing south of Exmouth may not be driven north of Exmouth unless a one way rental is approved. When rental commences from Perth, Broome or Kununurra, Group W may be driven on the Gibb River Road (Kimberley) from 1 Apr – 31 Oct 26, conditions apply. Group W only may be driven on Tunnel Creek Road, Windjana Gorge Road, Cape Leveque Road, Spring Creek Track to the Bungle Bungles. Group K and Group W may be driven to Karijini National Park. Driving on access roads to Aboriginal communities is not permitted without an approved permit.

Based on per vehicle per day (24 hour hire period). Minimum age restrictions apply. Restrictions on vehicle hire type apply for drivers under 25 years. A full driver's licence, credit card and security bond is required on collection. Additional driver fees apply. Vehicles are subject to availability and a similar vehicle to those pictured may be substituted. Not all vehicles are available at all locations. Check with your travel agent for details.



Small Suitcase Large Suitcase

TOYOTA COROLLA HATCH (or similar)

GROUP C

- Auto
- 5 door hatch
- 4 cylinder
- USB
- Bluetooth
- Cruise control
- Reversing camera



x 5

	BASIC EXCESS			ZERO EXCESS		
	1-3 DAYS	4-6 DAYS	7+ DAYS	1-3 DAYS	4-6 DAYS	7+ DAYS
PERTH AIRPORT	\$110*	\$102*	\$94*	\$142*	\$134*	\$126*
BROOME AIRPORT	\$146*	\$138*	\$130*	\$178*	\$170*	\$163*

TOYOTA COROLLA SEDAN (or similar)

GROUP D

- Auto
- 5 door sedan
- 4 cylinder
- USB • Bluetooth
- Smart cruise control
- Reversing camera
- Smartphone connectivity



x 5

	BASIC EXCESS			ZERO EXCESS		
	1-3 DAYS	4-6 DAYS	7+ DAYS	1-3 DAYS	4-6 DAYS	7+ DAYS
PERTH AIRPORT	\$123*	\$109*	\$105*	\$154*	\$141*	\$137*
BROOME AIRPORT	\$158*	\$145*	\$141*	\$186*	\$177*	\$173*

TOYOTA CH-R (or similar)

GROUP S

- Auto
- 5 door SUV
- 4 cylinder
- USB • Bluetooth
- Smart cruise control
- Reversing camera
- Smartphone connectivity



x 5

	BASIC EXCESS			ZERO EXCESS		
	1-3 DAYS	4-6 DAYS	7+ DAYS	1-3 DAYS	4-6 DAYS	7+ DAYS
PERTH AIRPORT	\$123*	\$109*	\$105*	\$154*	\$141*	\$137*
BROOME AIRPORT	N/A	N/A	N/A	N/A	N/A	N/A

KIA SPORTAGE (or similar)

GROUP K

- Auto
- 5 door SUV
- 4 cylinder
- USB • Bluetooth
- Smart cruise control
- Reversing camera
- Smartphone connectivity



x 5

	BASIC EXCESS			ZERO EXCESS		
	1-3 DAYS	4-6 DAYS	7+ DAYS	1-3 DAYS	4-6 DAYS	7+ DAYS
PERTH AIRPORT	\$134*	\$126*	\$115*	\$165*	\$157*	\$147*
BROOME AIRPORT	\$165*	\$149*	\$145*	\$189*	\$181*	\$178*

KIA CARNIVAL (or similar)

GROUP V

- Auto
- 5 door SUV
- 4 cylinder
- USB • Bluetooth
- Smart cruise control
- Reversing camera
- Smartphone connectivity



x 8

	BASIC EXCESS			ZERO EXCESS		
	1-3 DAYS	4-6 DAYS	7+ DAYS	1-3 DAYS	4-6 DAYS	7+ DAYS
PERTH AIRPORT	\$172*	\$153*	\$147*	\$203*	\$184*	\$178*
BROOME AIRPORT	\$207*	\$189*	\$182*	\$239*	\$221*	\$215*

TOYOTA KLUGER (or similar)

GROUP H

- Auto
- 5 door SUV
- 4/6 cylinder
- USB • Bluetooth
- Smart cruise control
- Reversing camera
- Smartphone connectivity



x 5

	BASIC EXCESS			ZERO EXCESS		
	1-3 DAYS	4-6 DAYS	7+ DAYS	1-3 DAYS	4-6 DAYS	7+ DAYS
PERTH AIRPORT	\$175*	\$168*	\$159*	\$234*	\$228*	\$219*
BROOME AIRPORT	N/A	N/A	N/A	N/A	N/A	N/A

TOYOTA PRADO (or similar)

GROUP W

- Auto
- 5 door 4WD
- 4/6 cylinder
- Cruise control
- Reversing camera
- Smartphone connectivity



x 7

	BASIC EXCESS			ZERO EXCESS		
	1-3 DAYS	4-6 DAYS	7+ DAYS	1-3 DAYS	4-6 DAYS	7+ DAYS
PERTH AIRPORT	\$221*	\$198*	\$190*	\$280*	\$257*	\$249*
BROOME AIRPORT	\$232*	\$209*	\$200*	\$292*	\$269*	\$261*



BUDGET

Budget Rent a Car is renowned for meticulously maintained vehicles and quality service. Offering a wide range of cars, 4WDs and minivans Budget has the right vehicle choice for your holiday needs.

Budget's car hire fleet is constantly being updated to ensure you enjoy the best in comfort and safety in late model vehicles and at competitive prices. Driving is one of the best ways to see the sights of Australia, and Budget offers customers the convenience of having locations at airports and cities Australia wide so you are never far from a pick-up point or friendly service.

Includes:

- Loss Damage Waiver • Administration Fee
- Vehicle Registration Fee • GST
- Concession Recovery Fee/Premium Location Surcharge
- Excess Reduction (Zero Excess option), at participating locations only
- All vehicles include: air-conditioning, ABS and six airbags

Car rentals commencing in Metropolitan and Country locations include unlimited kilometres. Rentals commencing in Remote locations include 100 kilometres per day with excess kilometres charged at 27.5c per kilometre.

Does Not Include:

- Excess Reduction (Basic Excess option) • Fuel
- One way rental fees • Tolls • Learmonth Service Fee
- Products purchased at rental counter

Excess:

An excess of \$5,900* applies to vehicle Groups C, D, S, and K, while Groups W, H, and V carry a standard excess of \$6,500*. To reduce your liability, optional Excess Reduction is available for an additional fee of \$36.90* per day for Groups C, D, S, and K, lowering the excess to \$1,000*, or \$39.21* per day for Groups W, H, and V, reducing the excess to \$1,500*. For complete coverage, a Zero Excess option is also available, eliminating the excess entirely. All prices above include administration fees, credit card surcharges, and GST, and are subject to Budget Rental Terms and Conditions.

Restricted Access:

Rentals commencing south of Exmouth may not be driven north of Exmouth unless a one way rental is approved. When rental commences from Perth, Broome or Kununurra, Group W may be driven on the Gibb River Road (Kimberley) from 1 Apr – 31 Oct 26, conditions apply. Group W only may be driven on Tunnel Creek Road, Windjana Gorge Road, Cape Leveque Road, Spring Creek Track to the Bungle Bungles and to Karinjini National Park. Driving on access roads to Aboriginal communities is not permitted without an approved permit.

Based on per vehicle per day (24 hour hire period). Minimum age restrictions apply. Restrictions on vehicle hire type apply for drivers under 25 years. A full driver's licence, credit card and security bond is required on collection. Additional driver fees apply. Vehicles are subject to availability and a similar vehicle to those pictured may be substituted. Not all vehicles are available at all locations. Check with your travel agent for details.



Small Suitcase Large Suitcase

KIA CERATO S HATCH (or similar)

GROUP C

- Auto
- 5 door hatch
- 4 cylinder
- USB • Bluetooth
- Cruise control
- Reversing camera or sensors



x 5

	BASIC EXCESS			ZERO EXCESS		
	1-3 DAYS	4-6 DAYS	7+ DAYS	1-3 DAYS	4-6 DAYS	7+ DAYS
PERTH AIRPORT	\$95*	\$88*	\$82*	\$121*	\$114*	\$108*
BROOME AIRPORT	\$130*	\$123*	\$116*	\$155*	\$148*	\$142*

TOYOTA COROLLA SEDAN (or similar)

GROUP D

- Auto
- 4 door sedan
- 4 cylinder
- USB
- Bluetooth
- Cruise control
- Reversing camera or sensors



x 5

	BASIC EXCESS			ZERO EXCESS		
	1-3 DAYS	4-6 DAYS	7+ DAYS	1-3 DAYS	4-6 DAYS	7+ DAYS
PERTH AIRPORT	\$106*	\$94*	\$91*	\$132*	\$121*	\$117*
BROOME AIRPORT	\$141*	\$129*	\$126*	\$166*	\$154*	\$151*

TOYOTA YARIS CROSS (or similar)

GROUP S

- Auto
- 5 door SUV
- 4 cylinder
- USB
- Bluetooth
- Smart cruise control
- Smartphone connectivity



x 5

	BASIC EXCESS			ZERO EXCESS		
	1-3 DAYS	4-6 DAYS	7+ DAYS	1-3 DAYS	4-6 DAYS	7+ DAYS
PERTH AIRPORT	\$106*	\$94*	\$91*	\$132*	\$121*	\$117*
BROOME AIRPORT	N/A	N/A	N/A	N/A	N/A	N/A

MITSUBISHI OUTLANDER (or similar)

GROUP K

- Auto • 5 door SUV
- 4 cylinder
- USB • Bluetooth
- Smart cruise control
- Reversing camera or sensors
- Smartphone connectivity



x 5

	BASIC EXCESS			ZERO EXCESS		
	1-3 DAYS	4-6 DAYS	7+ DAYS	1-3 DAYS	4-6 DAYS	7+ DAYS
PERTH AIRPORT	\$120*	\$113*	\$103*	\$145*	\$139*	\$129*
BROOME AIRPORT	\$143*	\$136*	\$126*	\$168*	\$161*	\$151*

HYUNDAI STARIA (or similar)

GROUP V

- Auto
- 5 door van
- 4/6 cylinder
- USB
- Bluetooth
- Cruise control
- Reversing camera or sensors



x 8

	BASIC EXCESS			ZERO EXCESS		
	1-3 DAYS	4-6 DAYS	7+ DAYS	1-3 DAYS	4-6 DAYS	7+ DAYS
PERTH AIRPORT	\$148*	\$132*	\$126*	\$173*	\$157*	\$152*
BROOME AIRPORT	\$182*	\$166*	\$161*	\$207*	\$191*	\$186*

TOYOTA KLUGER GX (or similar)

GROUP H

- Auto
- 5 door SUV
- 4/6 cylinder
- USB
- Bluetooth
- Reversing camera or sensors



x 5

	BASIC EXCESS			ZERO EXCESS		
	1-3 DAYS	4-6 DAYS	7+ DAYS	1-3 DAYS	4-6 DAYS	7+ DAYS
PERTH AIRPORT	\$152*	\$147*	\$139*	\$209*	\$204*	\$196*
BROOME AIRPORT	N/A	N/A	N/A	N/A	N/A	N/A

FORD EVEREST (or similar)

GROUP W

- Auto
- 5 door 4WD
- 4/6 cylinder
- USB
- Bluetooth



x 7

	BASIC EXCESS			ZERO EXCESS		
	1-3 DAYS	4-6 DAYS	7+ DAYS	1-3 DAYS	4-6 DAYS	7+ DAYS
PERTH AIRPORT	\$190*	\$171*	\$163*	\$246*	\$227*	\$220*
BROOME AIRPORT	\$202*	\$182*	\$175*	\$257*	\$238*	\$231*

CAMPERVAN & MOTORHOME HIRE



APOLLO & BRITZ

Through our RV rental partner *thl* we offer two established brands available to our customers.

Proudly Australian owned, Apollo has been helping people create fun road trip memories for more than 35 years. Relax in your 'home away from home' and explore the wonders of Australia at your own pace with an Apollo camper. With a wide range of motorhomes or campervans to choose from, you can be assured of a high-quality vehicle every time. Try a self-contained campervan with cooking facilities, air-conditioning and beds for up to six people, a compact camper for an authentic van-life experience or even a rugged 4WD camper designed for adventure-seekers. With 10 branches Australia-wide, including depots in Perth and Broome, you can holiday your way with Apollo.

Britz Australia is perfect for a family getaway, an adventure with mates or a couple's escape. With plenty of space for the grown-ups, the young ones and even the dog, the fully equipped 2WD and 4WD campervans have everything you need for unscripted holiday experiences. Your unforgettable holidays starts when you hire a Britz campervan.

Includes:

- Unlimited kilometres (except 4WDs)
- 300 kilometres per day (4WDs)
- Administration fee • 24/7 on road assistance
- Outback safety kit (4WDs only) • Linen and bedding
- Kitchen kit (cutlery, crockery etc)
- General equipment (broom, dust pan etc)

Does Not Include:

- One way fees • Fuel • Liability Reduction option
- Security deposit • Location fees

The Platinum Pack:

The Platinum Pack is designed to provide maximum liability cover. The pack includes the High Road (Liability for damage reduced to \$0), Extra Driver/Renter Fees, RV Essentials Kit 2WD (camping table, camping chairs, child/booster seats (pre-booked, max. two seats), fan heater (if required), toilet chemical (where applicable), 1 x Linen Kit Exchange (one exchange of bath towels, sheets, pillowcases and tea towels. Guests must visit the branch for linen to be exchanged), Windscreen and Tyre Protection, Extended Roadside Assistance, 1 x Drop and Go Pack.

Minimum age for drivers is 21 years. Minimum rental periods apply. All hires are subject to 2026/27 rental rates and terms and conditions. Driving area restrictions apply. 2WD campervans can only be driven on sealed roads. Self check-in is required for all hires minimum 14 days in advance.

\$115 surcharge applies when picking-up or dropping-off on public holidays.



The **thl Roadtrip App** is a must for all Apollo and Britz customers. Download it from Google Play or the App Store before you go.

The App has everything you need to know about a campervan holiday. It features a show-through video of the camper for you to watch before you arrive. There is also a bunch of helpful 'how to' videos to help you operate features of the camper while you're on the road. Search for and book campsites and activities directly in the app as well as find your closest supermarket, dump station, petrol stations and more. There is also a link to the online self check-in to complete before you arrive.



APOLLO EURO MINI

👤 x2

- Automatic transmission
- Air-conditioned driver's and main cabin
- Gas cooker
- Microwave
- Shower and toilet
- Refrigerator with freezer compartment
- Dining table converts to bed



APOLLO EURO TOURER

👤 x2

- Automatic transmission
- Air-conditioned driver's and main cabin
- Shower and toilet
- Gas cooker • Microwave
- Double bed • LCD screen/DVD
- For two adults and a child, choose the Apollo Euro Plus that features an additional single bed



APOLLO EURO QUEST

👤 x4

- Automatic transmission
- Air-conditioned driver's and main cabin
- Gas cooker
- Microwave
- Awning
- Two double beds
- Refrigerator



APOLLO EURO DELUXE

👤 x6

- Automatic transmission
- Air-conditioned driver's and main cabin
- Three double beds
- Gas cooker • Awning
- Microwave • Refrigerator
- Shower and toilet • LCD screen/DVD
- Reversing camera



BRITZ 4WD MAVERICK

👤 x2

- Automatic transmission
- Air-conditioned driver's cabin
- 80L fuel capacity + 2 additional 20L jerry cans
- External kitchen with gas cooker and 80L fridge with freezer
- Awning
- Dual batteries



BRITZ VOYAGER

👤 x2 👤 x2

- 2 adults and 2 children
- Automatic transmission
- Air-conditioned driver's cabin
- Gas cooker
- Microwave
- Two double beds
- Refrigerator



BRITZ HITOP

👤 x2

- Automatic transmission
- Air-conditioned driver's cabin
- Gas cooker
- Microwave
- Double bed
- Refrigerator
- USB charging • Bluetooth



BRITZ 4WD WARRIOR

👤 x4

- Automatic transmission
- Air-conditioned driver's cabin
- Freestanding tent • 270 degree awning
- Rooftop tent
- Picnic table and chairs
- Portable gas cooker
- Slide-out fridge • Radio/Bluetooth

Ask your travel agent for the best price available.

SELF DRIVE HOLIDAYS

There's no better way to discover Western Australia than on a self drive holiday. Travelling by road is one of the best ways to explore and our selection of hand-crafted itineraries will take you to the must-see locations, with each itinerary incorporating accommodation and car hire.

We have selected some favourites from the range of flexible self drive itinerary options available. Itineraries can be tailored to suit your individual needs and requirements by including extra nights, alternative vehicle types, accommodation upgrades, as well as local tours and cruises.

To create your own dream road trip, simply contact us and we will craft a personalised self drive holiday to suit you.

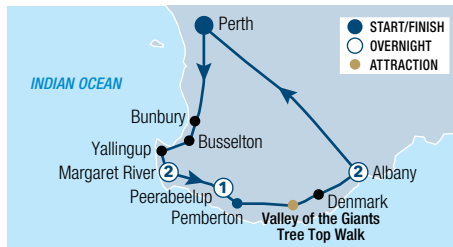


Cape Range National Park, Exmouth

Courtesy of Tourism Western Australia



Valley of the Giants Tree Top Walk



SOUTH WEST HIGHLIGHTS 6 DAYS

Day 1: Perth to Margaret River – 280km

Collect your rental vehicle and travel to the Margaret River region via Bunbury, home of the Koombana Bay dolphins, and Busselton, famous for having the longest timber jetty in the Southern Hemisphere. Spend the next two nights at Smiths Beach Resort.

Day 2: Margaret River

Explore the wineries and beaches and sample the gourmet delights of the Margaret River region.

Day 3: Margaret River to Peerabeelup – 98km

Drive along one of the state's most scenic routes – Caves Road to Peerabeelup. Stop to see Cape Leeuwin Lighthouse, then make your way through tall timber country. Overnight at Ampersand Estates & Rainfall Distillery.

Day 4: Peerabeelup to Albany – 268km (B)

Explore the Ampersand Estates vineyard before heading to Albany. Visit the Giant Tingle Tree and take a stroll along the Valley of the Giants Tree Top Walk (extra charge). Spend the next two nights at The Beach House at Bayside, Albany.

Day 5: Albany (CB)

Discover Albany, with a scenic walk along the magnificent coastline or visit the Historic Whaling Station.

Day 6: Albany to Perth – 420km (CB)

Return to Perth via Stirling National Park or Kojonup and return your rental vehicle.

(B = breakfast, CB = continental breakfast)

From **\$1619*** per person twin share

6 DAYS | PERTH TO PERTH

TRAVEL TYPE: Self drive

DEPARTS: Mon, Tue, Wed

HIGHLIGHTS

- Discover beautiful Margaret River wineries and art galleries
- Enjoy a wine tasting experience at Ampersand Estates & Rainfall Distillery
- Look out for whales passing along the Albany coast from June to October
- Visit the Valley of the Giants Tree Top Walk

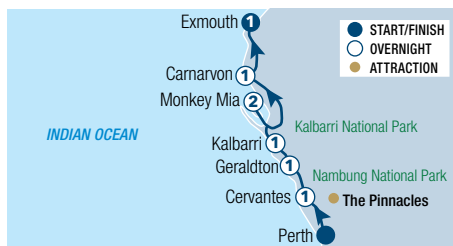
INCLUDES

- 5 nights accommodation
- Meals as specified
- 6 days Group C car rental with Budget+

+ Based on pick up from Perth Airport.



The Pinnacles, Indian Ocean Drive



WEST COAST EXPRESS 8 DAYS

Day 1: Perth to Cervantes – 200km

Collect your rental vehicle and travel to Cervantes and the Nambung National Park to explore the rock formations. Overnight at RAC Cervantes Holiday Park.

Day 2: Cervantes to Geraldton – 223km

Travel to Geraldton via Greenough. These areas are noted for seasonal wildflowers (Aug – Sep). Overnight at Hospitality Geraldton, SureStay Collection by Best Western.

Day 3: Geraldton to Kalbarri – 156km (CB)

Travel along the North West Coastal Highway to Kalbarri. Overnight at Kalbarri Edge Resort.

Days 4-5: Kalbarri to Monkey Mia^ – 390km

Continue to Shark Bay and Monkey Mia. Spend the next two nights at RAC Monkey Mia Dolphin Resort.

Day 6: Monkey Mia to Carnarvon – 340km

Depart Shark Bay and travel north along the coast to Carnarvon. Overnight at Hospitality Carnarvon, SureStay Collection by Best Western.

Day 7: Carnarvon to Exmouth – 363km (CB)

From Carnarvon, continue towards Coral Bay. Drive through Coral Bay to Exmouth. Overnight at Potshot Hotel Resort.

Day 8: Exmouth

Enjoy Ningaloo Marine Park before returning your rental vehicle.

(CB = continental breakfast)

From **\$1289*^** per person twin share

8 DAYS | PERTH TO EXMOUTH

TRAVEL TYPE: Self drive

DEPARTS: Mon, Tue, Wed, Thu, Sun

HIGHLIGHTS

- Explore the rock formations of the Pinnacles
- See spectacular gorges in Kalbarri National Park
- Marvel at the dolphins of Monkey Mia
- Swim in the clear waters of Shark Bay
- Visit beautiful Ningaloo Reef and Marine Park

INCLUDES

- 7 nights accommodation
- Meals as specified
- 8 days Group C car rental with Budget+

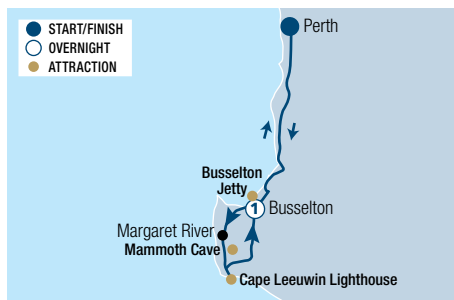
+ Based on pick up from Perth Airport. A one way rental fee of \$1,100 and Learmonth Airport drop off fee of \$77, payable direct to Budget when collecting vehicle. ^ A Monkey Mia Conservation Park Pass is required to enter the Park and is not included in the package price. Refer to page 7 for information on park fees and how to purchase passes.

* FROM PRICES ARE A GUIDE ONLY, subject to change and availability and are in Australian Dollars. Prices are per person twin share, unless otherwise specified and based on the lowest room category and travel in low season. For full terms and conditions, refer to the Booking Conditions on the inside back cover of this brochure.

TOURING



Busselton Jetty



MARGARET RIVER GETAWAY FOR FOOD & WINE LOVERS 2 DAYS

Day 1: Perth to Margaret River (LD) Travel south through scenic farmland to the beautiful Margaret River region. Stop for photos in quirky Cowaramup town and embark on a unique gastronomic journey, sampling produce from the various food and wine artisans of the region. Enjoy lunch at a local winery and then follow coastal walkways over rugged granite cliffs for ocean views, finishing at iconic Busselton Jetty. Overnight at Abbey Beach Resort, Busselton.

Day 2: Margaret River to Perth (BL) Enjoy a leisurely breakfast before being picked up to continue your adventure through the South West. Travel to one of

Margaret River's boutique breweries for a delicious lunch, with complimentary beer and wine tastings.

After lunch, visit Mammoth Cave for a guided tour through the chambers of this ancient time capsule. Continue on through the Boranup Forest to Augusta. Here at Cape Leeuwin Lighthouse, marvel at the dividing lines between the Southern and Indian Oceans. Stroll the streets of Margaret River township during a brief stop on your way back to Perth, returning in the evening.

(B = breakfast, L = lunch, D = dinner)

From **\$840*** per person twin share

2 DAYS | PERTH TO PERTH

OPERATOR: Australian Pinnacle Tours

TRAVEL TYPE: Escorted coach

DEPARTS: Wed, Fri, Sun

HIGHLIGHTS

- Be amazed by Mammoth Caves
- View the iconic Busselton Jetty
- Sample produce from the region's food and wine artisans

INCLUDES

- 1 night 4 star accommodation
- Meals as specified • Tastings of local gourmet food products, beers and wines
- Mammoth Cave guided tour
- Expert guide and commentary
- Return transfers from selected Perth hotels

Sole use, triple share and child prices and other accommodation options are available. BONUS: Book this tour and receive a Half Day Perth & Fremantle City Explorer tour.



MARGARET RIVER ESCAPE 3 DAYS

Day 1: Perth to Margaret River (L) Depart Perth and travel south through Western Australia's coastal and rural landscapes, stopping in Mandurah for coffee. After lunch in Busselton, stroll the iconic Busselton Jetty and foreshore. This afternoon, indulge in artisan chocolate tastings at Gabriel Chocolate, followed by a visit to the historic Prevelly Chapel, built in honour of wartime heroes. Continue to Margaret River and check in to Margaret's Beach Resort.

Day 2: Margaret River Region (BL) After breakfast, explore Surfers Point before descending into the ancient Mammoth Cave on a guided tour. Travel through the towering karri trees of Boranup Forest then head south to Cape Leeuwin

Lighthouse. Enjoy lunch in Augusta and a wine tasting at a boutique Margaret River winery. The afternoon includes free time to explore Margaret River township.

Day 3: Margaret River to Perth (BL) Begin the day with breakfast then a visit to Yahava KoffeeWorks and learn about the art of coffee roasting. Continue to Brown Hill Estate for a guided tasting through a selection of their wines, followed by a wine and cheese pairing at Edwards Wines. Finish with a gourmet lunch at Olio Bello, an organic olive grove and café, before returning to Perth in the late afternoon.

(B = breakfast, L = lunch)

From **\$1440*** per person twin share

3 DAYS | PERTH TO PERTH

OPERATOR: McLeod Tours

TRAVEL TYPE: Escorted Small Coach

DEPARTS: Wed, Sun

HIGHLIGHTS

- Forests, caves, coastline and Cape Leeuwin Lighthouse
- Tastings at three boutique Margaret River wineries
- Relaxed experiences with local producers and regional flavours

INCLUDES

- 2 nights 4 star accommodation
- Meals as specified
- Wine tasting at three premium wineries
- Entry fee onto Busselton Jetty
- Mammoth Cave Tour
- Tour of Leeuwin Lighthouse
- Expert guide and commentary
- Return transfers from selected Perth hotels



MARGARET RIVER PLATINUM TOUR 3 DAYS

Day 1: Perth to Margaret River (L) Depart Perth and travel south, stopping in Mandurah for coffee before continuing to Busselton. Enjoy a scenic ride on the iconic Busselton Jetty train followed by lunch at The Goose, overlooking Geographe Bay. This afternoon, enjoy a tasting at Aravina Estate, combining fine wines, manicured gardens and surf culture. Continue to the coast and check in to Smiths Beach Resort.

Day 2: Margaret River Region (BL) After breakfast at Lamonts Smith Beach, journey south to Surfers Point before stepping inside the ancient Mammoth Cave on a guided tour. Travel through the towering karri trees of Boranup Forest, stopping for a native honey tasting along

the way. Enjoy a hosted wine tasting and three-course lunch at the renowned Leeuwin Estate, followed by time to explore Margaret River township at leisure.

Day 3: Margaret River to Perth (BL) Begin the day with breakfast before visiting Canal Rocks, a dramatic coastal formation shaped by the Indian Ocean. Continue to Yallingup Galleries and Vasse Virgin, showcasing local art, craft and produce. Finish with a hosted tasting and exquisite three-course lunch at Vasse Felix, Margaret River's founding wine estate, before returning to Perth in the late afternoon.

(B = breakfast, L = lunch)

From **\$3290*** per person twin share

3 DAYS | PERTH TO PERTH

OPERATOR: McLeod Tours

TRAVEL TYPE: Escorted Small Coach

DEPARTS: Wed, Sun

HIGHLIGHTS

- Hosted wine tastings and three course lunches at Leeuwin Estate and Vasse Felix
- Two nights at Smiths Beach Resort
- Explore caves, coastline and Karri forests

INCLUDES

- 2 nights 5 star accommodation
- Meals as specified
- Wine tasting at three premium wineries
- Entry fee onto Busselton Jetty
- Mammoth Cave Tour
- Expert guide and commentary
- Return transfers from selected Perth hotels



* FROM PRICES ARE A GUIDE ONLY, subject to change and availability and are in Australian Dollars. Prices are per person twin share, unless otherwise specified and based on the lowest room category and travel in low season. For full terms and conditions, refer to the Booking Conditions on the inside back cover of this brochure.



Anzac Centre, Albany, Great Southern Coastal



Cape Leeuwin Lighthouse, Margaret River Wine Region

ALBANY, TREE TOP WALK & MARGARET RIVER 4 DAYS

Day 1: Perth to Albany (LD)

Depart Perth by coach, heading south towards Albany. Take in the Stirling Ranges, Porongorups and stop for lunch and wine tasting. Arrive in Albany and visit the ANZAC Memorial Centre. Immerse yourself in the ANZAC legend while taking a self-guided tour. Overnight at Dog Rock Hotel Albany or similar.

Day 2: Albany to Pemberton (BLD)

Visit The Gap and National Bridge before heading to the famous Whaleworld Interpretation Centre. Travel west to Walpole for a cruise on the Nornalup Inlet. Next stop is the Valley of the Giants Tree Top Walk, which reaches 40 metres high into the forest canopy. Travel north-west to the Pemberton region. Overnight at RAC Karri Valley Resort Pemberton or similar.

Day 3: Pemberton to Busselton (BLD)

This morning, take a short stroll to the majestic Beedelup Falls. Travel north through the stunning Blackwood Forest to Augusta. Visit Cape Leeuwin Lighthouse, where the Indian and Great Southern Oceans meet. After lunch travel through Boranup Forest to Mammoth Cave for a guided tour, before driving into the township of Margaret River where you will have

some time to visit the quaint shops on the main street. Pay a visit to Busselton Jetty, the longest wooden jetty in the southern hemisphere, before a late afternoon check-in at your accommodation. Overnight at Abbey Beach Resort or similar.

Day 4: Busselton to Perth (BL)

After breakfast, travel to the quaint town of Cowaramup, famous for its numerous cow statues. Explore local chocolate and gourmet produce factories and enjoy some of their samples as well as taste some of the locally produced wine. Stop for a delicious lunch, complete with wine tastings, at a local winery. Following lunch, head to the dramatic coast at Canal Rocks, a beautiful granite outcrop where the ocean has created natural canals. Return to Perth in the early evening, where your tour concludes.

(B = breakfast, L = lunch, D = dinner)



Monkey Mia Dolphins, Shark Bay Marine Park



Hutt Lagoon, Batavia Coast

MONKEY MIA DOLPHINS COASTAL LOOP 4 DAYS

Day 1: Perth to Kalbarri

Your coastal adventure begins with the Greenhead Three Bays Walk, followed by lunch at Dynamite Bay. Continue along Indian Ocean Drive for some stunning coastal views. Stop at the Hutt Lagoon Pink Lake a must-see attraction just outside of town. In Kalbarri, explore the Natural Bridge and Castle Cove. Overnight at Kalbarri Edge Resort.

Day 2: Kalbarri to Monkey Mia (B)

Start early to explore Kalbarri National Park's Murchison Gorge, Nature's Window, and Kalbarri Skywalk. In spring, enjoy vibrant wildflowers. After lunch at the Billabong Roadhouse, visit Shell Beach and the Monkey Mia Dolphin Resort. Relax or explore the local wildlife, including dolphins, turtles, and kangaroos. Overnight at RAC Monkey Mia Dolphin Resort.

Day 3: Monkey Mia to Geraldton (B)

Meet the famous Monkey Mia dolphins, then enjoy free time on the beach or choose to join a wildlife cruise (own expense). Visit Eagle Bluff for sharks and turtles, explore Denham's foreshore, and stop at Overlander Roadhouse and Galena Bridge en route to Geraldton. Overnight at Hospitality Geraldton Motel.

Day 4: Geraldton to Perth (BL)

This morning, visit the HMAS Sydney Memorial and take in the stunning views of Geraldton. Stop at the Point Moore Lighthouse before heading to Port Denison. Take a walk along the foreshore and to the lookout. Then head back along the Indian Ocean road with a stop in the town of Jurien Bay with a walk along the Jetty. Continue on to the lovely little seaside town of Cervantes and enjoy lunch at the famous Lobster Shack and join a guided tour through the Lobster factory. After lunch, explore the Pinnacles Desert in Nambung National Park. Sit back and relax on the bus for the last stretch, taking in the views of the scenic countryside before making your way back to Perth.

(B = breakfast, L = lunch)

From **\$1599*** per person twin share

4 DAYS | PERTH TO PERTH

OPERATOR: Australian Pinnacle Tours

TRAVEL TYPE: Escorted coach

DEPARTS: 20 Apr, 4, 11, 18, 25 May, 31 Aug, 7, 14, 21 Sep, 5, 12, 19, 26 Oct, 2, 9, 16, 30 Nov 26, 1, 15 Feb, 8, 22 Mar 27

HIGHLIGHTS

- Visit the ANZAC Centre & Whaleworld in Albany
- Visit iconic Busselton Jetty
- Enjoy wine tastings in Margaret River
- Explore the Valley of the Giants & Tree Top Walk

INCLUDES

- 3 nights 3½ to 4 star accommodation
- Meals as specified • Admission fees
- Nornalup Inlet cruise
- Expert guide and commentary
- Return transfers from selected Perth hotels

Sole use, triple share and child prices are available. BONUS: Book this tour and receive a Half Day Perth & Fremantle City Explorer tour.



From **\$1760*** per person twin share



4 DAYS | PERTH TO PERTH

OPERATOR: Autopia Tours

TRAVEL TYPE: Escorted small coach

DEPARTS: Saturdays[^]

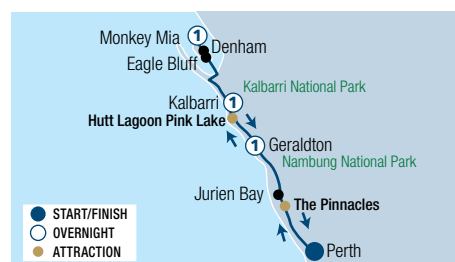
HIGHLIGHTS

- Visit Monkey Mia and see the wild resident dolphins
- Wander through the ancient Pinnacles Desert
- Hike through Kalbarri National Park

INCLUDES

- 3 nights 4 star accommodation
- Meals as specified
- Guided walks
- Lobster Shack Factory Tour
- Close-encounter dolphin experience
- Comfortable, relaxed-paced touring
- National park fees
- Expert tour guide & local commentary
- Return transfers from selected Perth accommodation

[^]Block out dates apply. Shared accommodation option also available.





Turquoise Bay, Ningaloo Reef



Kalbarri Skywalk

PERTH TO EXMOUTH EXPLORER 7 DAYS

Day 1: Perth to Kalbarri (LD)

Begin with a guided tour of the Pinnacles Desert in Nambung National Park, followed by lunch at Jurien Bay. Drive along Indian Ocean Drive, visit the Pink Lake near Geraldton (conditions permitting), and continue to Kalbarri for an overnight stay at Kalbarri Pelicans Nest.

Day 2: Kalbarri to Monkey Mia (BLD)

Start early with sunrise at Nature's Window or Kalbarri Skywalk, then explore Murchison Gorge and Z-Bend in Kalbarri National Park. Enjoy spring wildflowers, lunch by the river, and travel to Monkey Mia with comfort stops, arriving at beachfront accommodation. Overnight at RAC Monkey Mia Dolphin Resort.

Day 3: Monkey Mia to Coral Bay (BLD)

Meet the famous Monkey Mia dolphins and enjoy beach time or a coffee. Visit Eagle Bluff for cliff views, stroll along Shell Beach, and have lunch before heading to Coral Bay. Overnight at Ningaloo Coral Bay Bayview Lodge.

Day 4: Coral Bay to Exmouth (BD)

Explore Ningaloo Reef at your own pace, with options for a boat tour (own expense), beach stroll, or snorkelling just off Coral Bay. Swim with manta rays

(own expense) before heading to Exmouth. Stay the next two nights at Potshot Hotel Resort.

Day 5: Exmouth (BD)

Drive through Cape Range National Park, relax on pristine beaches or snorkel at Turquoise Bay. Alternatively, choose free time in Exmouth, or join a whale shark or humpback swim tour (seasonal, own expense). End the day watching the sun set at Vlamingh Head Lighthouse.

Day 6: Exmouth to Geraldton (BL)

Visit to the Gwoonwardu Mia Culture Centre and Gascoyne's local produce region. Enjoy lunch on the waterfront, a photo stop at Murchison River, and a break at Billabong for refreshments. Overnight at Geraldton.

Day 7: Geraldton to Perth (B)

Visit the HMAS Sydney Memorial for views of Geraldton, walk the Green Head 3 Bay Track, and explore Stromatolites at Lake Thetis. Stop at Lancelin or Guilderton for beach lookout views before returning to Perth late afternoon.

(B = breakfast, L = lunch, D = dinner)

From **\$2695*** per person twin share

7 DAYS | PERTH TO PERTH

OPERATOR: Autopia Tours

TRAVEL TYPE: Escorted small coach

DEPARTS: Fri, Mon[^]

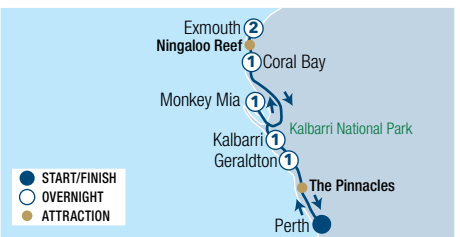
HIGHLIGHTS

- Marvel at the limestone outcrops of The Pinnacles in Nambung National Park
- Explore Kalbarri National Park and Skywalk
- Experience wild dolphin encounters at Monkey Mia, Shark Bay Marine Park
- Snorkel Ningaloo Reef and discover of Coral Bay

INCLUDES

- 6 nights 3½ star accommodation
- Meals as specified • Guided bush walks
- Close-encounter dolphin experience
- Nature-based soft adventure touring
- National park fees
- Expert tour guide & local commentary
- Return transfers from selected Perth accommodation

[^]Departs Apr – Aug. Shared accommodation option also available. Not suitable for children under 6 yrs. Moderate fitness level required.



Monkey Mia, Shark Bay



Kalbarri National Park

PERTH TO EXMOUTH & NINGALOO REEF COMFORT 8 DAYS

Day 1: Perth to Geraldton via Nambung National Park

Depart Perth and travel to the seaside resort of Geraldton. Along the way you'll stop to take in the largest dunes in Western Australia and the limestone towers of the Pinnacles at Nambung National Park. Arrive in Geraldton and enjoy an orientation drive around town before checking in to your accommodation for an overnight stay at Hospitality Inn Geraldton.

Day 2: Geraldton to Kalbarri National Park (B)

After a leisurely breakfast, head to historical Northampton, one of the oldest towns in Western Australia. See some heritage buildings dating back to the 1800s and meet the artists at a First Nations gallery. Travel to the Pink Lake at Hutt Lagoon before heading to the spectacular Kalbarri National Park. Overnight at the Kalbarri Edge Resort.

Day 3: Kalbarri National Park to Monkey Mia (B)

This morning board a boat at the Kalbarri Marina to learn about the local rock lobster industry. Continue on to Monkey Mia, where the local Dolphin population thrives. Stop via the Hamelin Pool Marine Nature Reserve for some 'living fossils,' known as Stromatolites, and one of Shark Bay's picturesque lookouts. Tonight, enjoy a First Nations cultural experience courtesy of the Nhandu and Malgana people. This is your chance to try the didgeridoo or traditional conch shell and taste some bush tucker. Stay the next two nights at Monkey Mia Dolphin Resort.

Day 4: Monkey Mia (B)

Join a WA Parks & Wildlife expert and learn all about the famous Monkey Mia dolphins. The rest of the day is free to enjoy the beach or book an optional activity.

Day 5: Monkey Mia to Carnarvon (B)

Today head to Carnarvon Space and Technology Centre for a quick photo stop, before visiting the Gascoyne Aboriginal Heritage and Cultural Centre to learn about the region's unique culture and country. Snap pictures of the Carnarvon Cactus Farm, one of the town's quirkiest sights, before heading to the Gascoyne Food Trail. Overnight at Hospitality Inns Carnarvon.

Day 6: Carnarvon to Exmouth (B)

Journey to Coral Bay, home to the World Heritage-listed Ningaloo Reef, the world's largest fringing reef. Embark on a glass-bottom boat tour and snorkel experience to see up to 250 species of coral and 500 species of fish. Further along the coast visit Vlamingh Head Lighthouse before arriving in Exmouth. Stay the next two nights at Ningaloo Lodge Exmouth.

Day 7: Exmouth (B)

Explore Exmouth at your own pace, with options for a boat tour out on Ningaloo Reef, a swim with whalesharks cruise or a Cape Range National Park tour (all own expense).

Day 8: Exmouth (B)

Your adventure concludes this morning after breakfast.

(B = breakfast)

From **\$4175*** per person twin share



8 DAYS | PERTH TO EXMOUTH

OPERATOR: Autopia Tours

TRAVEL TYPE: Escorted small coach

DEPARTS: 12, 26 Apr, 10, 24 May, 7, 21 Jun, 5, 19 Jul, 2, 16, 30 Aug, 13, 27 Sep, 11 Oct 26

HIGHLIGHTS

- Walk among the towering limestone Pinnacles in Nambung National Park
- Spot the resident bottlenose dolphins at Monkey Mia
- Cruise and snorkel around Coral Bay's Ningaloo Reef

INCLUDES

- 7 nights 3½ star accommodation
- Meals as specified
- Rock Lobster Pot Boat Tour
- Dolphin experience with Local Park Ranger
- 2 First Nations Cultural Experiences
- Ningaloo Reef Coral Bay Glass Bottom Boat Cruise
- National park fees
- Expert tour guide & local commentary

Not suitable for children under 12 yrs.





Matagarup Bridge, Perth

Courtesy of Tourism Western Australia/@aeroture



PERTH & SURROUNDS

Perth is the perfect outdoor city boasting glorious weather, a variety of beautiful parks, endless beaches and natural bushland. Its heart is bustling with restaurants, shopping and cultural spaces. Murray and Hay Street Malls are where you'll find a range of stores and cafés. Seek out the bar scene tucked away in Perth's laneways or enjoy a meal at Elizabeth Quay. Explore Kings Park with over 400 hectares of gardens and bushlands or sample delicious wines in the Swan Valley. Perth has 19 beautifully clean and uncrowded beaches. From iconic Cottesloe to the surf hotspot of Scarborough, you're sure to find a spot to soak up the sun. Fremantle blends the old with the new. Take in the classic colonial architecture or sip your coffee along the Cappuccino Strip.

SEE

- View the largest coin of pure gold ever made and see exhibits worth more than \$25 million at the Perth Mint
- See Thomas Dambo's Giants of Mandurah, the larger-than-life wooden sculptures

DO

- Head down to Fremantle to check out the wall art in the old cells of the Fremantle Prison

EAT & DRINK

- Venture to Subiaco, just 4km from the city centre, and try some of Perth's newest restaurants including La Condesa and Yiamas

WHAT'S ON

Perth Royal Show
27 September to 4 October

Ever Now
October

REF.	APARTMENTS	PAGE
1	Airport Apartments by Vetroblu	21
2	Quality Resort Sorrento Beach	27
3	Ramada Vetroblu Scarborough Beach	27
4	Seashells Mandurah	27
3	Seashells Scarborough	26

REF.	HOTELS	PAGE
5	Baileys Parkside Motel by Vetroblu	21
6	Comfort Inn & Suites Goodearth Perth	22
7	COMO The Treasury	24
8	Crown Metropolis Perth	25
9	Crown Promenade Perth	23
10	Crown Towers Perth	24
11	Crown Plaza Perth	23
12	Duxton Hotel Perth	25
13	Esplanade Hotel Fremantle – By Rydges	26
13	Garde Hotel & Warders Cottages	26
14	Holiday Inn Perth City Centre	23
13	Hougoumont Hotel, Fremantle	26
15	InterContinental Perth City Centre	25
16	Metro Hotel Perth	22
17	Metro Hotel Perth City	22
18	Pan Pacific Perth	25
19	Quality Hotel Ambassador Perth	22
3	Rendezvous Hotel Perth Scarborough	27



PERTH TOURS



Elizabeth Quay, Perth

PRIVATE AIRPORT TRANSFERS

Arrive in style with a private car transfer. Car transfers are available from Perth Domestic Airport to Perth CBD accommodation, as well as surrounding areas, 24 hours a day, 7 days a week. Sit back, relax and enjoy the passing scenery as you are transferred in air-conditioned comfort. Travel distance from Perth Airport to Perth CBD is approximately 12 kilometres.

Operator: Airlink Ground Transport

	Sedan 1 to 3 People	Small Van 4 to 7 People
Perth CBD/Burswood/ Subiaco	\$190* [^]	\$253* [^]
Scarborough Beach	\$209* [^]	\$300* [^]
Fremantle/Sorrento	\$231* [^]	\$327* [^]
Mandurah	\$393* [^]	\$479* [^]
Bunker Bay	\$1023* [^]	\$1132* [^]
Margaret River	\$1145* [^]	\$1284* [^]

[^]Price based on per vehicle from Perth Domestic Airport, one way. Other prices apply from Perth CBD and International Airport. Private tours also available.



HALF DAY MORNING PERTH & FREMANTLE CITY EXPLORER

Starting in Perth, this tour takes in all major attractions of the revitalised Perth CBD including the Western Australian Cricket Ground (WACA) and Optus Stadium. Then head to Kings Park Botanical Gardens to take in the views from the war memorial overlooking the city skyline. Pass by Cottesloe Beach where you will see the sparkling Indian Ocean before travelling to Fremantle. Enjoy a drive through Fremantle before free time to explore this vibrant town. Return to Perth by 12:30pm.

Includes:

- Expert driver/guide with informative commentary
- Transport by air-conditioned coach
- Pick-up from selected Perth accommodation

Operator: Australian Pinnacle Tours

Duration: 4 hours 30 minutes

Departs: Tue, Wed, Fri, Sun from Crown Perth Complex at 8am

	Adult	Child 4-12 yrs
Half Day Tour	\$89*	\$50*



MAXIMUM GROUP SIZE
10

VERTIGO EXPERIENCE

Experience Perth's biggest rush with VERTIGO. As you step onto Optus Stadium's roof, you'll be rewarded with breathtaking views of Perth City and the stadium below. Harnessed from above, walk out onto the platform and hang out 42 metres above the ground and feel the rush!

Includes:

- 90 minute guided tour
- Hat and digital photos

Operator: Optus Stadium

Duration: 1 hour 30 minutes

Departs: From THE OZONE Gate D,
Mon to Fri at 3pm+, 5pm+
Sat, Sun at 10am+, 1pm+

⁺Times subject to change.

	Adult	Child 10-17 yrs
Guided Tour	\$135*	\$89* [^]

[^]Not suitable for children under 10 yrs. Must be accompanied by an adult and weight restrictions apply.



MAXIMUM GROUP SIZE
14

HALO ROOFTOP CLIMB

Climb 42 metres above the field of play to experience HALO, Perth's biggest rooftop climb! Take the 360 degree walk around the roof, where you'll learn about the stadium's impressive construction, state-of-the-art facilities, and get behind-the-scenes insights on game day operations.

Includes:

- 90 minute guided tour
- Hat and digital photos

Operator: Optus Stadium

Duration: 1 hour 30 minutes

Departs: From THE OZONE Gate D,
Mon to Fri at 3pm+, 5pm+
Sat, Sun at 10:30am+, 1:30pm+

⁺Times subject to change.

	Adult	Child 8-17 yrs
Rooftop Walking Tour	\$114*	\$72* [^]

[^]Not suitable for children under 8 yrs. Must be accompanied by an adult and weight restrictions apply.



OPTUS STADIUM TOUR

See Optus Stadium from a whole new perspective! Go behind-the-scenes, and access areas normally reserved for the biggest names in sport and entertainment. Explore the players' change rooms and even walk to the edge of the field and sit on the interchange benches used by the stars of the game.

Includes:

- 90 minute guided tour
- See the Victory Lounge and Coaches' Room
- Interactive experience in Dennis Cometti Media Centre

Operator: Optus Stadium

Duration: 1 hour 30 minutes

Departs: Daily from THE OZONE Gate D
at 10am+, 11am+, 12pm+, 1pm+

⁺Times subject to change.

	Adult	Child 5-15 yrs
Stadium Tour	\$37*	\$24*



LANEWAYS, ART, HISTORY & CULTURE WALKING TOUR

Explore Perth's hidden laneways, arcades, heritage façades and vibrant street art on a two hour walking tour. Guided by a passionate local, the experience finishes with a complimentary drink in a city bar.

Includes:

- Complimentary drink
- Professional and informative commentary

Operator: Two Feet and a Heartbeat

Duration: 2 hours 30 minutes

Departs: Daily from Perth Town Hall at 2pm

	Adult	Child 7-12 yrs
Walking Tour	\$75*	\$51*



SWAN RIVER DINNER CRUISE

Admire the changing colours and lights of the Perth City skyline as you enjoy cruising on the iconic Swan River during dinner. Savour the tempting hot buffet selections, salads and cold dishes followed by dessert and enjoy live entertainment whilst you dine. Full bar facilities are available on board (extra charge).

Includes:

- Scenic return cruise
- Buffet dinner with dessert
- Live entertainment

Operator: Captain Cook Cruises

Duration: 2 hours 30 minutes

Departs: From Pier 3 Barrack Street Jetty, Perth at 7pm Sat (Mar – Oct) Fri, Sat (Nov – Feb)

	Adult	Child 4-12 yrs
Dinner Cruise	\$160*	\$90*



SWAN RIVER LUNCH CRUISE

Enjoy a cruise on the magnificent Swan River combined with a delicious buffet lunch offering some of Western Australia's abundant seasonal produce, accompanied by dessert. Listen to the Captain's commentary as you cruise between Perth and the Port City of Fremantle, whilst taking in the sights and immersing yourself in the beauty of Perth.

Includes:

- Return scenic Swan River Cruise
- Buffet lunch with dessert
- Captain's commentary

Operator: Captain Cook Cruises

Duration: 2 hours 45 minutes

Departs: From Pier 3 Barrack Street Jetty, Perth at 11:15am, Tue, Fri, Sat, Sun (Apr – Oct), Mon, Tue, Fri, Sat, Sun (Nov – Mar)

	Adult	Child 4-12 yrs
Lunch Cruise	\$130*	\$85*



SWAN VALLEY WINE CRUISE

Cruise upstream to the award-winning Swan Valley wine region; whilst indulging in a Western Australian wine tasting, and lunch. Visit Mandoon Estate and enjoy a unique Macaron and wine pairing experience and free time to explore the Estate, Gallery and Brewery before boarding your boat back to Perth with complimentary wines, beers and entertainment.

Includes:

- Return scenic cruise from Perth to the Swan Valley
- West Australian wine tasting
- Lunch on board (dietary options available)
- Wine and Macaron pairing
- Dessert and wine on return cruise

Operator: Captain Cook Cruises

Duration: 6 hours 30 minutes

Departs: From Pier 3 Barrack Street Jetty, Perth at 10:30am, Fri, Sat, Sun (Apr – Oct), Wed, Fri, Sat, Sun (Nov – Mar)

	Adult
Full Day Tour	\$209*



SWAN RIVER SCENIC RETURN CRUISE

Take in the wonderful sights that can only be viewed from the Swan River as you cruise the calm waters between Fremantle and Perth on a direct return service. Cruise past key sights including Perth's impressive Bell Tower, the restored Swan Brewery, Kings Park, Royal Perth Yacht Club, the magnificent mansions of Perth overlooking the river and Fremantle's busy inner harbour. Enjoy expert Captain's commentary for the duration of your cruise.

Includes:

- Captain's commentary
- Return transfers from selected Perth accommodation

Operator: Captain Cook Cruises

Duration: 2 hours 45 minutes

Departs: From Perth at 11:15am, 2:15pm, Fremantle at 12:45pm, Daily except Wed (Nov – Mar), Tue, Fri to Sun (Apr – Oct)

	Adult	Child 4-12 yrs
Scenic Cruise	\$65*	\$42*



BALLOON FLIGHT AVON VALLEY

Float above the rolling hills and lush landscapes of the Avon Valley on a hot air balloon flight. Flights depart from Northam, at the heart of the valley, just over an hour's drive from Perth. Depending on the wind direction, you will fly over the vast farmland that comprises the wheat belt or over lovely rolling hills in areas, where you can often see kangaroos and even emus.

Includes:

- One hour balloon flight
- Breakfast
- Return transfers from Crown Casino, Perth

Operator: Liberty Balloon Flights

Duration: 7 hours

Departs: Daily from Crown Casino Complex at 4am (18 Apr – 30 Oct 26)

Seasonal variations may apply.

	Adult	Child 6-12 yrs
Balloon Flight	\$440*	\$410*

*PRICES ARE A GUIDE ONLY, subject to change and availability and are in Australian Dollars. Prices are per person, unless otherwise specified and based on travel in low season. For full terms and conditions, refer to the Booking Conditions on the inside back cover of this brochure.

PERTH TOURS



INDULGENCE COACH TOUR

Savour the best of Swan Valley on this full day coach tour. Enjoy tastings at four quality wineries, sample chocolates and immerse yourself in the region's rich history, culture and gourmet delights. Sit back and enjoy a mouth-watering lunch at Homestead Brewery.

Includes:

- Tastings at 4 wineries
- Set lunch at Homestead Brewery with a glass of wine, beer, cider or soft drink
- Shared cheeseboard • Chocolate tasting
- Beer and snacks at a microbrewery
- Return transfers from Barrack Street Jetty or Crown Casino

Operator: Swan Valley Tours
Duration: 7 hours
Departs: From Barrack St Jetty at 9:45am, Fri to Sun (Apr – Oct), Mon, Wed, Fri to Sun (Nov – Mar)

	Adult
Full Day Tour	\$165*



CRUISING THE SWAN TOUR

Start the day with wine tastings at Sandalford Winery and Mandoon Estate. Delight in lunch at Homestead Brewery before indulging in a wine tasting at Lancaster Wines. Stop at Margaret River Chocolate Co. before boarding the River Lady for your return cruise to Perth. Enjoy afternoon tea, standard wines and beer and live entertainment as you cruise back to the Barrack Street Jetty.

Includes:

- Tastings at 3 wineries • Set lunch at Homestead Brewery with a glass of wine, beer, cider or soft drink
- Shared cheeseboard • Chocolate tasting
- Afternoon tea and live entertainment
- Coach transfer from Perth to Swan Valley

Operator: Swan Valley Tours
Duration: 7 hours
Departs: From Barrack St Jetty at 9:45am, Fri to Sun (Apr – Jun, Sep – Oct), Mon, Wed, Fri to Sun (Nov – Mar)

	Adult
Full Day Tour	\$199*



SWIM WITH WILD DOLPHINS

Just 45 minutes from Perth. Cruise through Rockingham's pristine sheltered bays and islands, home to more than 200 local dolphins. Experience the unforgettable thrill of a guided swim with wild dolphins in their natural habitat. Between swims, relax on board and enjoy gourmet platters featuring fresh seasonal produce.

Includes:

- Use of snorkelling equipment and wetsuits
- Fresh seasonal grazing platters
- Return transfers from selected Perth city locations

Operator: Perth Wildlife Encounters
Duration: 6 – 8 hours
Departs: Daily from Crown Perth Complex at 6:30am, Bell Tower Bus Stand at 6:40am

Tour does not operate from 3 Jun – 14 Sep 26. Not suitable for child under 7 yrs.

	Adult/Child
Full Day Tour	\$339*



Busselton Jetty, Margaret River Wine Region

Courtesy of Tourism Western Australia

MARGARET RIVER CHOCOLATE, NOUGAT, WINE & COASTAL TOUR

Journey through scenic farmland to Gabriels Chocolates in Metricup, then stop for photos in quirky Cowaramup. Sample nougat and gourmet nuts at Providore before wine and more produce tastings at Bettenays. Enjoy a delicious Margaret River winery lunch, then browse soaps and oils at Vasse Virgin. Follow coastal walkways over rugged granite cliffs for ocean views, finishing at Busselton Jetty. An unforgettable day showcasing the best sample of what Margaret River has to offer.

Includes:

- Lunch at a local Margaret River venue
- Transport by air-conditioned coach
- Return transfers from selected Perth accommodation

Operator: Australian Pinnacle Tours
Duration: 12 hours 30 minutes
Departs: Wed, Fri and Sun from Crown Perth Complex at 8am

	Adult	Child 4-12 yrs
Full Day Tour	\$269*	\$159*



MARGARET RIVER TOUR

Visit the iconic Busselton Jetty, then head to one of Margaret River's boutique breweries for lunch, with beer and wine tastings. Explore Mammoth Cave before passing through the Boranup Forest. Stop at Cape Leeuwin Lighthouse, then take a brief stroll through the township of Margaret River before returning to Perth.

Includes:

- Visit to Mammoth Cave and Cape Leeuwin Lighthouse Interpretive Centre
- Beer and wine tastings
- Lunch
- Expert guide and informative commentary
- Return transfers from selected Perth accommodation

Operator: Australian Pinnacle Tours
Duration: 12 hours 30 minutes
Departs: Mon, Tue, Thu, Sat from Crown Perth Complex at 8am

	Adult	Child 4-12 yrs
Full Day Tour	\$269*	\$159*



WAVE ROCK, YORK & ABORIGINAL CULTURE

Journey to Hyden, home of Wave Rock. Visit historic York. Pass by the Corrigin Dog Cemetery and Hippo's Yawn. Choose to visit either a wildlife park, view a unique antique lace collection or an amazing toy soldier museum before continuing onto Mulka's Cave, a sacred Aboriginal landmark.

Includes:

- Wave Rock Cultural tour
- Country style lunch
- Admission fees
- Expert guide with informative commentary
- Return transfers from selected Perth accommodation

Operator: Australian Pinnacle Tours
Duration: 12 hours 30 minutes
Departs: Tue, Wed, Fri, Sun from Crown Perth Complex at 8am

	Adult	Child 4-12 yrs
Full Day Tour	\$269*	\$159*



PINNACLES, KOALAS & SANDBOARDING 4WD ADVENTURE

Travel to Caversham Wildlife Park for a short stop to meet the koalas, kangaroos and wombats. Continue to Lancelin sand dunes for thrilling 4WD driving and sandboarding. Travel to the lobster fishing town of Cervantes to enjoy fish and chips before exploring Nambung National Park, home of the Pinnacles Desert.

Includes:

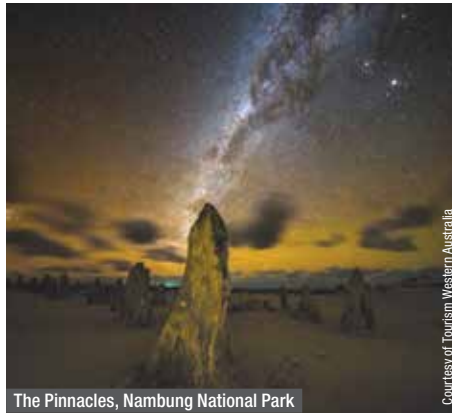
- Pinnacles Desert 4WD tour with sandboarding
- Caversham Wildlife Park • Fish and chips lunch
- Informative commentary • Expert guide
- Return transfers from selected Perth accommodation

Operator: Australian Pinnacle Tours

Duration: 11 hours 30 minutes

Departs: Mon, Wed, Thu, Fri, Sun from Crown Perth Complex at 8am

	Adult	Child 4-12 yrs
Full Day Tour	\$269*	\$159*



PINNACLES SUNSET & STARGAZING

Travel north towards Yanchep National Park to see koalas and kangaroos. Stop at the magical Pinnacles Desert to view the mystical limestone rock formations. Experience the moonlike landscape come to life as the sun sets over the Indian Ocean and the moon rises. Enjoy dinner in a traditional tavern in Cervantes.

Includes:

- Yanchep National Park
- Pinnacles Desert sunset
- Stargazing • Dinner
- National park fees
- Return transfers from selected Perth accommodation

Operator: Australian Pinnacle Tours

Duration: 8 hours 30 minutes

Departs: Mon, Wed, Thu, Fri, Sun from Crown Perth Complex at 2pm

	Adult	Child 4-12 yrs
Afternoon/Evening Tour	\$249*	\$139*



PINNACLES, YANCHEP & SWAN VALLEY

Travel to Yanchep National Park for a quick stop to see koalas and kangaroos. Continue to Nambung National Park and the mystical Pinnacle Desert for a walk through the fascinating landscape. Enjoy a fish and chip lunch in the coastal town of Cervantes. Before returning to Perth, visit the iconic Swan Valley and sample some of the regions offerings such as chocolate, nougat and gourmet nuts.

Includes:

- Tastings at Swan Valley • Fish and chip lunch
- Expert commentary • Return transfers from selected Perth accommodation

Operator: Australian Pinnacle Tours

Duration: 10 hours 30 minutes

Departs: Tue, Fri, Sat from Crown Perth Complex at 8am

	Adult	Child 4-12 yrs
Full Day Tour	\$249*	\$139*

AIRPORT APARTMENTS BY VETROBLU




1 Bedroom Apartment

190 Coolgardie Avenue, Redcliffe
MAP PAGE 17

From **\$290***

- ❖ Spacious apartments with kitchen facilities
- ❖ 24 hour airport shuttle service available
- ❖ Relax and unwind in the gym and spa

Location: Located minutes from DFO and Belmont Forum and a short drive from the airport. Distances: Perth Airport 8.2km, Hay Street Mall 10.4km.

Property Features: Spa, Gym, Barbecue, Lift, Non smoking, 24 hour reception, Parking (free), 24 hour shuttle service (extra charge), 51 rooms.

Room Features: Air-conditioning, Balcony, Tea/coffee making facilities, Kitchen, Washer/dryer, Ironing facilities, Hair dryer.

Max Capacity: 1 Bedroom Apartment – 2 adults/1 infant, 2 Bedroom Apartment – 4.



BAILEYS PARKSIDE MOTEL BY VETROBLU




Queen

150 Bennett Street, East Perth
MAP PAGE 17

From **\$180***

- ❖ Conveniently located in East Perth
- ❖ Carefully styled rooms featuring 60s décor
- ❖ Dine on pub style meals in the restaurant

Location: Situated just minutes from WACA, Optus Stadium and farmer markets. Distances: Perth Airport 11km, Hay Street Mall 1.7km.

Property Features: Restaurant, Guest laundry, Parking (extra charge), Non smoking, 44 rooms.

Room Features: Air-conditioning, Fan, Tea/coffee making facilities, Microwave, Mini fridge, Television, Hair dryer.

Max Capacity: Queen/Twin – 2, Triple – 3.



PERTH ACCOMMODATION

COMFORT INN & SUITES GOODEARTH PERTH



Superior Studio Suite

195 Adelaide Terrace, Perth
MAP PAGE 17

From **\$199***

- ❖ Walking distance to all major attractions including Perth's CBD
- ❖ Massage and treatment facilities available
- ❖ Amazing views of the Swan River from the restaurant and bar

Location: Close to CBD shopping and entertainment areas. Distances: Perth Airport 12km, Hay Street Mall 200m.

Property Features: Restaurant, Bar, Shop, Guest laundry, Massage facilities, Lift, 24 hour reception, Parking (limited – free), 180 rooms.

Room Features: Air-conditioning, Tea/coffee making facilities, Limited cooking facilities with microwave, Cable TV, Ironing facilities.

Max Capacity: Superior Studio Suite – 3, Family Suite/Open Plan Suite – 5.



METRO HOTEL PERTH CITY



Standard

200 Hay Street, East Perth
MAP PAGE 17

From **\$222***

- ❖ Walk to the WACA Cricket Ground and Perth Mint
- ❖ Spacious guest rooms with natural light
- ❖ Easy access to Matagarup Bridge and Optus Stadium

Location: On the eastern side of the city within walking distance of the Swan River foreshore. Distances: Perth Airport 15km, Hay Street Mall 1.4km.

Property Features: Restaurant, Café, Bar, Laundry/dry cleaning service, Guest laundry, Lift, Parking (limited – extra charge), Non smoking, 94 rooms.

Room Features: Air-conditioning, Mini refrigerator, Tea/coffee making facilities, Ironing facilities, Hair dryer.

Max Capacity: Standard/Standard King – 2.



METRO HOTEL PERTH



Standard

61 Canning Highway, South Perth
MAP PAGE 17

From **\$215***

- ❖ Superior rooms feature balconies with stunning views of the Perth Skyline
- ❖ Ideal self-drive property with plenty of free parking
- ❖ Close to Crown Entertainment Complex and Perth Stadium

Location: Close to the CBD and easy access to both north and south highways. Distances: Perth Airport 13km, Hay Street Mall 5km.

Property Features: Restaurant, Bar, Room service, Gym, Laundry/dry cleaning service, Lift, 24 hour reception, Parking (free), Non smoking, 147 rooms.

Room Features: Air-conditioning, Balcony (Standard, Superior), Tea/coffee making facilities, Coffee pod machine (Executive Aspire), Cable TV, Ironing facilities, Hair dryer, Safe (Executive Aspire).

Max Capacity: Standard – 4, Superior – 3, Executive Aspire – 2.



QUALITY HOTEL AMBASSADOR PERTH



Premium Deluxe

196 Adelaide Terrace, Perth
MAP PAGE 17

From **\$199***

- ❖ Walking distance to shopping, entertainment and nightlife precincts
- ❖ All rooms feature crisp white linen and luxe ensuite bathroom
- ❖ Perfect for couples, solo travellers, and families with cots complimentary

Location: Close to major landmarks and CBD. Distances: Perth Airport 8km, Hay Street Mall 1km.

Property Features: Restaurant (breakfast only), Guest laundry, Lift, 24 hour reception, Lobby shop, Parking (extra charge), 170 rooms.

Room Features: Air-conditioning, Separate bath and shower, Tea/coffee making facilities, Ironing facilities, Hair dryer.

Max Capacity: Premium Deluxe – 2.



CROWN PROMENADE PERTH



Superior King

Great Eastern Highway, Burswood
MAP PAGE 17

From **\$209**^{**}

- ❖ Rooms feature modern contemporary furnishings, rich textures and linens
- ❖ Eight minute walk to Optus Stadium
- ❖ Restaurants, bars and theatre are located on-site

Location: On the eastern banks of the Swan River, a 10 minute drive to the city centre and an 18 minute drive to the airport. Distances: Perth Airport 8km, Hay Street Mall 4.7km.

Property Features: Pool, Restaurant, Bar, 24 hour room service, Access to Crown Spa (at Crown Towers), Gym, Theatre, Guest Laundry, 24 hour reception, Parking (undercover security – extra charge), 291 rooms.

Room Features: Air-conditioning, Mini bar, Tea/coffee making facilities, In-room movies (complimentary), Cable TV, Ironing facilities, Bathrobes and slippers, Hair dryer, Safe.

Max Capacity: Superior King/Studio Spa – 3, Superior Twin – 4.

[^]Price applies Sun-Thu nights.



HOLIDAY INN PERTH CITY CENTRE



Standard King

778-788 Hay Street, Perth
MAP PAGE 17

From **\$210**^{**}

- ❖ Central and convenient location
- ❖ Great for families with a Kids Stay & Eat Free program
- ❖ Free CBD bus stop located right across from hotel

Location: In the heart of the CBD on bustling Hay Street, close to entertainment, shops and restaurants. Distances: Perth Airport 15km, Hay Street Mall 130m.

Property Features: Restaurant, Bar, 24 hour room service, Laundry/dry cleaning service, Lift, 24 hour reception, 186 rooms.

Room Features: Air-conditioning, Tea/coffee making facilities, Mini refrigerator, Cable TV, Ironing facilities, Hair dryer, Safe.

Max Capacity: Standard King – 2 adults/1 child, Standard Twin/Upgraded Standard – 4.

[^]Price applies Fri-Sun nights.



CROWNE PLAZA PERTH



Standard

54 Terrace Road, Perth
MAP PAGE 17

From **\$230**^{**}

- ❖ Superior rooms have views of the Swan River and South Perth foreshore
- ❖ Alfresco dining under the palms at Gusti Restaurant
- ❖ Open-air infinity pool with views of Langley Park

Location: In the east pocket oasis of Perth's CBD across the road from Langley Park. Distances: Perth Airport 12km, Hay Street Mall 1.8km.

Property Features: Pool, Restaurant, Café, Bar, Room service, Gym, Bicycle hire (free), Guest laundry (free), Laundry/dry cleaning service, Lift, 24 hour reception, Parking (on-site), Non smoking, 189 rooms.

Room Features: Air-conditioning, Tea/coffee making facilities, Cable TV, Docking station, Ironing facilities, Hair dryer, Safe.

Max Capacity: Standard – 2 adults/2 children, Queen Balcony Riverview – 2.



PERTH ACCOMMODATION

CROWN TOWERS PERTH



Deluxe King

Great Eastern Highway, Burswood
MAP PAGE 17

From **\$399**^{**^}

- ❖ Rooms offer stunning views of the Darling Ranges, Swan River and city skyline
- ❖ Expansive lagoon pool is perfect for families
- ❖ Australia's only Forbes 5 star property

Location: Within walking distance to the Swan River and the casino. Distances: Perth Airport 8km, Hay Street Mall 4.6km.

Property Features: Nightly entertainment, Pool, Restaurant, Bar, 24 hour room service, Fitness centre, Crown Spa, Laundry/dry cleaning service, Lift, 24 hour reception, Parking (valet – extra charge), Non smoking, 500 rooms.

Room Features: Air-conditioning, Tea/coffee making facilities, Coffee pod machine, Mini bar, Cable TV, In-room movies (pay to view), Ironing facilities, Bathrobes, Hair dryer, Safe.

Max Capacity: Deluxe King/Premier King/1 Bedroom Deluxe Villa – 2, Studio/Premier Suite/Executive Suite/Premier Club View – 3, Deluxe Twin – 4.

[^]Price applies Sun-Thu nights.



COMO THE TREASURY



Heritage

1 Cathedral Avenue, Perth
MAP PAGE 17

From **\$1046**^{**^}

- ❖ Elegant hotel housed in 140 year old State Buildings
- ❖ Spacious rooms featuring handcrafted furniture
- ❖ Relax at the award-winning COMO Shambhala Spa

Includes full breakfast daily and welcome drink on arrival.

Location: Sits in the heart of Perth's historic Cathedral Square within walking distance to shops and entertainment. Distances: Perth Airport 11.6km, Hay Street Mall 300m.

Property Features: Pool (heated), Spa, Bar, Café, Gym, Bike hire, 24 hour reception, Valet parking (extra charge), Non smoking, 48 rooms.

Room Features: Air-conditioning, Tea/coffee making facilities, Ironing facilities, Bathrobes, Hair dryer, Safe.

Max Capacity: Heritage/Heritage Balcony – 2, Treasury/Treasury Balcony/Studio Suite/Cabinet Suite/Heritage Suite – 3, Treasury Suite – 4.

[^]Price applies Sun-Thu nights.



*** FROM PRICES ARE A GUIDE ONLY**, subject to change and availability and are in Australian Dollars. Prices are per room per night for 2 people, unless otherwise specified and based on the lowest room category for travel in low season. For full terms and conditions, refer to the Booking Conditions on the inside back cover of this brochure.

CROWN METROPOL PERTH



Luxe King

Great Eastern Highway, Burswood
MAP PAGE 17

From **\$330** ^{**^}

- ❖ Well-appointed luxurious rooms and suites with deep soaking bath
- ❖ Onsite entertainment and dining precinct
- ❖ Lagoon pool, perfect for families with children

Location: Overlooking the Swan River and close to the casino. Distances: Perth Airport 8km, Hay Street Mall 4.8km.

Property Features: Pools (3 – including children’s with waterslides), Restaurant, Bar, 24 hour room service, Access to Crown Spa (at Crown Towers), Gym, Theatre, Convention Centre, 397 rooms.

Room Features: Air-conditioning, Mini bar, Cable TV, Tea/coffee making facilities, Casting services for streaming, Docking station, Ironing facilities, Bathrobes, Hair dryer, Safe.

Max Capacity: Luxe King/Luxe View King/Luxe King Spa/Loft Suite – 3, Luxe Twin/Luxe View Twin – 4, The Apartment – 6.

[^]Price applies Sun-Thu nights.



DUXTON HOTEL PERTH



Deluxe King

1 St Georges Terrace, Perth
MAP PAGE 17

From **\$290** ^{*}

- ❖ Newly refurbished rooms featuring magnificent views of the city or the Swan River
- ❖ Ideally located a short walk from the shopping district and Elizabeth Quay
- ❖ Sustainable amenities, from in-room filtered water fountains to onsite EV charging

Location: Close to central Perth and local attractions. Distances: Perth Airport 12km, Hay Street Mall 700m.

Property Features: Pool (outdoor), Restaurant, Bar, 24 hour room service, 24 hour gym, Sauna, Steam room, Dry cleaning service, 24 hour reception, Conference and event rooms (8), 303 rooms.

Room Features: Air-conditioning, Tea/coffee making facilities, Filtered water fountain, Streaming services with 200 channels, Ironing facilities, Hair dryer.

Max Capacity: Deluxe King/Club King City View/Premier King River View/Club Twin City View/Suite – 2, Deluxe Twin/Premier Twin River View – 3 adults or 2 adults/2 children.



INTERCONTINENTAL PERTH CITY CENTRE



King Cozy

815 Hay Street, Perth
MAP PAGE 17

From **\$337** ^{**^}

- ❖ Unrivalled inner-city location, next to His Majesty’s Theatre
- ❖ Vibrant collection of restaurants and bars with experiential dining offerings
- ❖ Club InterContinental offers exclusive benefits from booking to departure

Location: Nestled in a truly unbeatable location within Perth’s CBD, immersed in a vibrant area, with entertainment, dining, art, and culture at every turn. Distances: Perth Airport 12km, Hay Street Mall 200m.

Property Features: Restaurants (2), Terrace bar, Club lounge, 24 hour room service, Fitness centre, Dry cleaning service, 24 hour reception, 240 rooms.

Room Features: Air-conditioning, In-room bar, Tea/coffee making facilities, Coffee pod machine, Smart TV with Chromecast, Docking station, Bathrobes, Hair dryer.

Max Capacity: Classic/Classic City View – 2 adults/2 children, King Cozy/King Premium Corner – 2.

[^]Price applies Fri-Sun nights.



PAN PACIFIC PERTH



Deluxe

207 Adelaide Terrace, Perth
MAP PAGE 17

From **\$316** ^{*}

- ❖ Elegant rooms, thoughtfully designed to deliver ultimate comfort
- ❖ Iconic views from every angle – Swan River, Kings Park, or city skyline
- ❖ Vibrant and award-winning Peruvian dining at UMA Restaurant

Location: Perfectly located by the city centre, near cultural attractions, Swan River trails, Elizabeth Quay, and Optus Stadium. Distances: Perth Airport 11km, Hay Street Mall 1km.

Property Features: Pool, Restaurants (2), Bar, Café, 24 hour room service, Gym, Laundry/dry cleaning service, 24 hour reception, Parking (valet – extra charge), Non smoking, 488 rooms.

Room Features: Air-conditioning, Tea/coffee making facilities, In-room movies (pay to view), Cable TV, Ironing facilities, Hair dryer, Safe.

Max Capacity: Deluxe/Premier/Premier Riverview – 2, Pacific Club – 3.



^{*}FROM PRICES ARE A GUIDE ONLY, subject to change and availability and are in Australian Dollars. Prices are per room per night for 2 people, unless otherwise specified and based on the lowest room category for travel in low season. For full terms and conditions, refer to the Booking Conditions on the inside back cover of this brochure.

FREMANTLE & PERTH BEACHES ACCOMMODATION

GARDE HOTEL & WARDERS COTTAGES

◆◆◆◆




Gus Standard

Corner of William and Parry Street, Fremantle
 MAP PAGE 17 From \$305*

- ❖ Design-led hotel on the historic Fremantle Police Headquarters site
- ❖ Wellness-focused amenities including sauna, ice shower and day spa
- ❖ Sip and dine at Anglesea Restaurant

Includes light breakfast daily.

Location: Tucked within the heart of Fremantle's cultural precinct. Distances: Perth Airport 27.1km, Beach 750m.
Property Features: Restaurant, Bar, 24 hour room service, Day spa, Laundry service, Lift, Non smoking, 24 hour reception, 106 rooms.
Room Features: Air-conditioning, Tea/coffee making facilities, Mini bar, Smart TV with Chromecast, Ironing facilities, Bathrobes, Hair dryer, Safe.
Max Capacity: Gus Standard/Warders Terrace/Gus Premium – 2, Warders Terrace Cottage/Warders Family Courtyard Cottage/Helen Suite/Laura Suite – 2 adults/1 child.



ESPLANADE HOTEL FREMANTLE – BY RYDGES

◆◆◆◆◇




Superior

46-54 Marine Terrace, Fremantle
 MAP PAGE 17 From \$260*



- ❖ Heritage hotel dating back to the 1850's
- ❖ Spacious rooms with modern amenities
- ❖ Take a dip in the resort style pool

Location: Set right in the heart of Fremantle and within walking distance to the Fremantle Markets and Esplanade Park. Distances: Perth Airport 27.6km, Beach 400m.
Property Features: Pools (2), Restaurants (2), Bars (2), 24 hour room service, Gym, Library, Guest laundry, Lift, Non smoking, 24 hour reception, 300 rooms.
Room Features: Air-conditioning, Tea/coffee making facilities, Smart TV with Chromecast, Washer/dryer, Ironing facilities, Hair dryer.
Max Capacity: Superior/Superior Poolview/King Spa – 3 adults or 2 adults/2 children.



HOUGOUMONT HOTEL, FREMANTLE

◆◆◆◆◇

Superior Cabin

15 Bannister Street, Fremantle
 MAP PAGE 17 From \$353*

- ❖ Boutique hotel in the heart of Fremantle
- ❖ Modern guest rooms offering luxury bedding
- ❖ Enjoy breakfast at the on-site craft bakery

Includes light breakfast daily.

Location: In downtown Fremantle and just a short walk from most major attractions. Distances: Perth Airport 27.5km, Beach 3.3km.
Property Features: Bar, Bakery, Bike hire, Dry cleaning service, Parking (extra charge), Non smoking, 32 rooms.
Room Features: Air-conditioning, Mini bar, Tea/coffee making facilities, Coffee pod machine, Ironing facilities, Hair dryer, Safe.
Max Capacity: Superior Cabin/Deluxe Cabin – 2.



SEASHELLS SCARBOROUGH

◆◆◆◆




Collections 2 Bedroom

178 The Esplanade, Scarborough
 MAP PAGE 17 From \$275*^

- ❖ Spacious apartments offering stunning ocean views
- ❖ Fully equipped kitchens and expansive balconies
- ❖ Two pools, one heated and the other overlooking the ocean

Location: Steps away from Scarborough Beach. Distances: Perth Airport 29km, Scarborough Beach 100m.
Property Features: Pools (2 – 1 heated), Barbecue area, Parking (undercover – free), 31 rooms.
Room Features: Ocean views, Air-conditioning, Balcony, Kitchen with microwave and dishwasher, Tea/coffee making facilities, Coffee pod machine, Laundry, Hair dryer, Safe.
Max Capacity: Collections 2 Bedroom – 4, Seashells 2 Bedroom – 5.
 ^Minimum 2 night stay applies.



* FROM PRICES ARE A GUIDE ONLY, subject to change and availability and are in Australian Dollars. Prices are per room per night for 2 people, unless otherwise specified and based on the lowest room category for travel in low season. For full terms and conditions, refer to the Booking Conditions on the inside back cover of this brochure.

PERTH BEACHES ACCOMMODATION

RAMADA VETROBLU SCARBOROUGH BEACH



King Standard

48A Filburn Street, Scarborough
MAP PAGE 17

From **\$210***

- ❖ A short stroll to the iconic Scarborough Beach
- ❖ Modern spacious apartments, perfect for families
- ❖ Many of the apartments feature large furnished balconies

Location: Located in the heart of Scarborough's entertainment precinct and just a short drive to Hillary's Boat Harbour, Perth CBD and Fremantle. Distances: Perth Airport 29.2km, Beach 400m.

Property Features: Gym, Guest Laundry, Non smoking, Parking (extra charge), 54 rooms.

Room Features: Air-conditioning, Tea/coffee making facilities, Kitchenette with cooktop and microwave, Washer/dryer, Ironing facilities, Hair dryer, Safe.

Max Capacity: King Standard – 2, 1 Bedroom Queen Business/1 Bedroom Queen Suite – 3, 2 Bedroom Business/2 Bedroom Premier Apartment – 4 adults/1 child. Other room types also available.



RENDEZVOUS HOTEL PERTH SCARBOROUGH



Coastal Classic

148 The Esplanade, Scarborough
MAP PAGE 17

From **\$199***

- ❖ Beachfront hotel overlooking the soft white sands of Scarborough Beach
- ❖ 30 minute drive from Perth Airport and only 15 minutes from Perth's CBD
- ❖ Dynamic facilities including amazing dining options catering to all guests

Location: Overlooking the Indian Ocean with the soft white sand beach just moments away. Distances: Perth Airport 29km, Scarborough Beach 100m.

Property Features: Restaurant, Café, Bar, 24 hour room service, Vanilla Day Spa, Gym, Bicycle hire, Games room, Guest lounge, Laundry/dry cleaning service, 24 hour reception, Parking (extra charge), 337 rooms.

Room Features: Ocean views, Air-conditioning, Balcony, Mini bar, Cable TV, In-room movies (pay to view), Ironing facilities, Hair dryer.

Max Capacity: Coastal Classic/Ocean View Vista/Horizon Ocean Vista – 3.



QUALITY RESORT SORRENTO BEACH



Hotel Studio Resort View

1 Padbury Circle, Sorrento
MAP PAGE 17

From **\$269***

- ❖ Modern and spacious apartments, some with ocean views
- ❖ Apartments feature kitchen facilities and separate lounge area
- ❖ Enjoy alfresco breakfast at 76 Steps Restaurant

Location: Steps from Sorrento Beach. Distances: Perth Airport 30km, Hillarys Harbour 700m.

Property Features: Pool (heated), Spa, Restaurant, Bar, Sauna, Barbecue areas (2), Guest laundry, Parking (free), 78 rooms.

Room Features: Air-conditioning, Limited cooking facilities with microwave (1 Bedroom), Kitchen with microwave (2 and 3 Bedroom), Ironing facilities, Hair dryer.

Max Capacity: Hotel Studio Resort View/Hotel Studio Ocean View/1 Bedroom Spa Resort View/1 Bedroom Spa Ocean View – 3, 2 Bedroom – 5, 3 Bedroom – 7.



SEASHELLS MANDURAH



1 Bedroom

16 Dolphin Drive, Mandurah
MAP PAGE 17

From **\$279*^**

- ❖ Infinity-edge heated pool
- ❖ Spacious, outdoor entertainment area featuring a barbecue and grill
- ❖ Choose from one and two bedroom apartments with ocean or marina views

Location: On the beach at Comet Bay in between the ocean and the Marina. Distances: Perth Airport 78km, Beachfront.

Property Features: Pool (heated), Day spa, Barbecue area, Tennis court, Lift, Parking (undercover security – free), 57 rooms.

Room Features: Air-conditioning, Balcony, Kitchen with microwave and dishwasher, Tea/coffee making facilities, In-room movies (free), Laundry, Jetted bath.

Max Capacity: 1 Bedroom – 3, 2 Bedroom/2 Bedroom Oceanview – 5.

^Price applies Sun-Thu nights.



ROTTNEST ISLAND

Only 19 kilometres from Perth, but feeling like a world away, Rottnest Island is blessed with picturesque scenery, amazing marine life and some of the finest beaches and bays. Rottnest Island has an unusual marsupial population known as Quokkas, who are native to Rottnest and can be found almost everywhere on the island.

SEE

- Board the Captain Hussey train and admire the beauty of the south side of the island

DO

- With over 63 beaches and 20 bays, enjoy water activities like swimming, diving, fishing and surfing

EAT & DRINK

- Sip on a refreshing spritz while watching the sunset over Rottnest Bay at Pinky's Rottnest Island

WHAT'S ON

Rottnest Channel Swim
February



Longreach Bay, Rottnest Island

Courtesy of Tourism Western Australia



REF.	HOTELS	PAGE
1	Discovery Resorts – Rottnest Island	30



ROTTNEST EXPRESS

Just a short ferry ride from Perth or Fremantle, Rottnest Island has long been Western Australia's holiday destination of choice.

Rottnest Express sets sail from three convenient departure locations to suit your travel needs. Located in the CBD, Barrack Street Jetty offers daily morning departures. In Fremantle, B Shed Terminal has several departures per day, and the Northport Terminal offers a large, secure car park.

Operator: Rottnest Express

Departs: Daily from Perth Barrack Street Jetty and Fremantle's B Shed Terminal and Northport Terminal

Additional experiences including Day packages, Island tours and Bike hire also available.

	Adult	Child 4-12 yrs
From Fremantle	\$90*^	\$45*^
From Perth	\$135*^	\$75*^

^Price based on same day return. One way, extended return, concession and family prices also available.



The Basin, Rottnest Island

Courtesy of Tourism Western Australia



ROTTNEST FAST FERRY TRANSFERS

Experience everything Perth's Island paradise has to offer with Rottnest Fast Ferries. Offering Western Australia's newest Rottnest Ferry, Harbour Master, this custom built catamaran offers unrivalled stability and comfort, three outside decks and panoramic windows. Departing from Hillarys Boat Harbour, only 25 minutes north of the city, there is no quicker way to Rottnest.

Courtesy transfers from selected Perth and Scarborough hotels are available on request.

Operator: Rottnest Fast Ferries

Departs: Daily from Hillarys Boat Harbour at 7:30am, 10am

	Adult	Child 4-12 yrs
From Hillarys Boat Harbour	\$95*^	\$57*^

^Price based on same day return. Extended return, concession and family prices also available.



ROTTNEST ISLAND – GRAND ISLAND TOUR

Tour Rottnest's must-see locations including the Wadjemup Lighthouse, Henrietta Rocks, Oliver Hill Gun Fortification and Tunnels, Cape Vlamingh and the majestic lookout point at Cathedral Rocks. A unique scenic train ride is one of the many highlights.

Includes:

- 4 hour guided Rottnest Island tour
- Admission to Oliver Hill Gun Fortification and Tunnels
- Historic train ride • Light lunch • Island admission fee
- Transport by air-conditioned coach
- Return ferry transfers from Perth or Fremantle

Operator: SeaLink Rottnest Island

Duration: 4 hours

Departs: Daily from Perth Pier 3 Barrack Street Jetty at 8:30am, Fremantle B Shed at 9am

	Adult	Child 4-12 yrs
From Fremantle	\$206*	\$119*
From Perth	\$246*	\$143*



GRAND ISLAND TOUR

Beginning with a unique historic train ride, you'll explore the island's stunning beauty as well as its cultural and historical heritage. Take in the flora and wildlife, picturesque beaches, woodlands and incredible salt lakes. Visit Rottnest's must-see locations including the Wadjemup Lighthouse, Jeannies Lookout, Oliver Hill Gun Fortification and Tunnels and the look-out point at Mabel Cove.

Includes:

- Return Rottnest Island ferry • Oliver Hill Guns and Tunnels tour • Transport by air-conditioned coach
- Historic train ride • Light lunch
- Return transfers from selected Perth & Scarborough accommodation

Operator: Rottnest Fast Ferries

Duration: 7 hours

Departs: Daily from Hillarys Boat Harbour at 7:30am, 10am

Moderate fitness required due to multiple steps on Oliver Hill tour.

	Adult	Child 4-12 yrs
Full Day Tour	\$199*	\$125*



BEST OF ROTTNEST TOUR

This self-guided cycling tour has been designed to give you the quintessential Rotto experience. Explore Rottnest's 63 beaches and bays as you journey along the bike trails on a custom-built bike. Recharge with a 'Cray Dog' from The Lane, a delicious burger stuffed with Western Rock Lobster. Finish off the day with an ice-cream from local Simmo's Ice Creamery.

Includes:

- Bicycle hire
- Return Rottnest Island ferry with a coffee on board
- Cray Dog lunch and ice cream
- Return transfers from selected Perth & Scarborough accommodation

Operator: Rottnest Fast Ferries

Duration: 7 hours

Departs: Daily from Hillarys Boat Harbour at 7:30am, 10am

Not suitable for children under 4 yrs.

	Adult	Child 4-12 yrs
Full Day Self Guided Tour	\$159*	\$110*



BAYSEEKER TOUR

Enhance your Rottnest experience with this unique offering of a wonderful, fully commented coach tour visiting highlights of the island including Mabel Cove and Wadjemup Lighthouse. A fantastic, must do tour of the Island. Package with a return ferry from Hillary's Boat Harbour for your complete Rottnest experience.

Includes:

- Visit Mabel Cove, Wadjemup Lighthouse and Henrietta Rocks
- Air conditioned 105-minute Bayseeker bus tour
- Return ferry transfer from Hillarys Boat Harbour
- Return transfers from selected Perth & Scarborough accommodation

Operator: Rottnest Fast Ferries

Duration: 7 hours

Departs: Daily from Hillarys Boat Harbour at 7:30am, 10am

	Adult	Child 4-12 yrs
Full Day Tour	\$145*	\$90*



ROTTNEST ISLAND FERRY & BIKE

Explore the beauty of Rottnest Island by bike. With minimal cars on the island cycling is the best way to get around, it's a true bikers paradise. Receive your bike as you disembark the ferry and start exploring the coastline at your own pace. With different speed gears and cushioned seat, you are able to pedal comfortably from bay to bay as you immerse yourself in the beauty of the island. Rottnest Island ferry and bike hire makes exploring Rottnest Island simple, convenient, and stress free.

Includes:

- Use of bike, safety helmet and bike lock
- Island call out service
- Return ferry transfer from Perth or Fremantle

Operator: SeaLink Rottnest Island

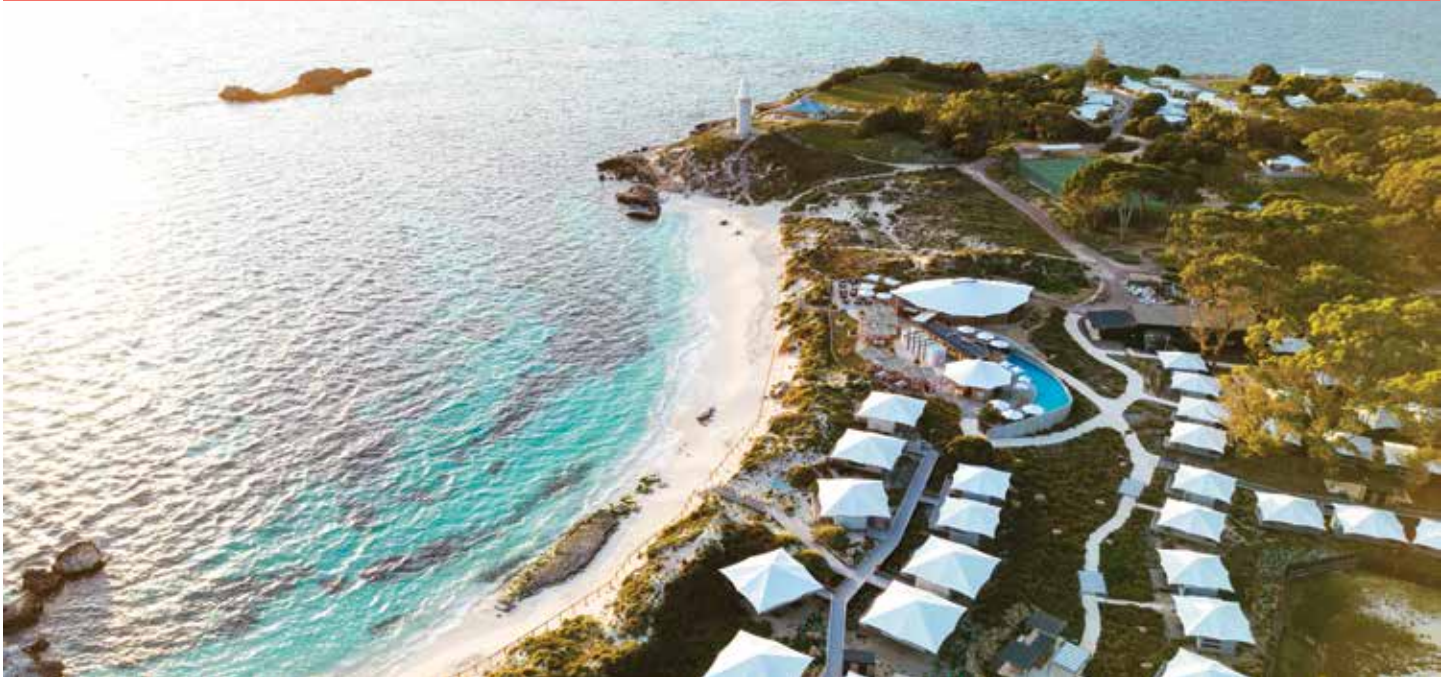
Duration: 8 – 10 hours

Departs: Daily from Perth at 8:30am, Fremantle at 9am

	Adult
From Fremantle	\$122*
From Perth	\$162*

ROTTNEST ISLAND ACCOMMODATION

DISCOVERY RESORTS – ROTTNEST ISLAND



Strue Road, Rottnest Island
MAP PAGE 28

From **\$299***

- ❖ View a clear starry night from the comfort of your eco-tent deck
- ❖ Lagoon style swimming pool and barbecue areas
- ❖ All-day dining available at Pinky's Rottnest Island
- ❖ Direct beach access from your tent to the beach
- ❖ Boardwalks and pathways between tents keep the landscape undisturbed
- ❖ Hike the Wadjemup Bidi trails that traverse the island

Includes full breakfast daily.

Location: Situated on the beachfront and within walking distance to the town centre and shops. Distances: Ferry terminal 1km.

Getting There: Multiple daily ferry transfer options are available – see page 28 for details. As Rottnest Island is a vehicle free zone, guests are required to walk 1km from the ferry terminal to the resort (luggage is transferred from the ferry).

Property Features: Pool (resort style), Restaurant, Bar, Barbecue areas, Sundeck, 83 rooms.

Room Features: Fan, Balcony, Limited cooking facilities with kettle and toaster (excluding Standard Tent), Private en suite, Hair dryer, All rooms non smoking.

Max Capacity: Standard Tent/Superior Tent/Deluxe Tent/Deluxe Oceanside Tent – 2, Superior Access Tent – 4, Superior Family Tent/Premium Family Tent – 5.



Deluxe Oceanside Tent



Standard Tent



* FROM PRICES ARE A GUIDE ONLY, subject to change and availability and are in Australian Dollars. Prices are per room per night for 2 people, unless otherwise specified and based on the lowest room category for travel in low season. For full terms and conditions, refer to the Booking Conditions on the inside back cover of this brochure.



Vasse Felix, Margaret River Wine Region

Courtesy of Tourism Western Australia

MARGARET RIVER REGION & THE SOUTH WEST

Rolling vineyards are set against a backdrop of breathtaking coastal and forest scenery in the Margaret River region. Indulge in gourmet delights from world-renowned wine, local cheeses, chocolate and fudge.

The South West is blessed with natural treasures. Watch Humpback whales on their annual migration, see the striking granite coastline known as The Gap in Albany, and take a postcard perfect snap of Greens Pool in Denmark.

SEE

- Visit Lake Cave at Boranup and see the delicate crystal formations that grow from the cave roof, reflected in the tranquil lake

DO

- Wander through the treetops along the Valley of the Giants Tree Top Walk

EAT & DRINK

- Visit Wills Domain Winery and indulge in a tasting plate of fresh meats and cheeses

WHAT'S ON

Cabin Fever Festival
17 to 26 July

REF.	APARTMENTS	PAGE
1	Abbey Beach Resort, Busselton	32
2	Ampersand Estates & Rainfall Distillery	34
3	Aravina Escapes, Yallingup	34
4	Heyscape Denmark	35
5	Margarets Beach Resort, Gnarabup Beach	34
6	Margarets In Town Apartments, Margaret River	34
7	Seashells Yallingup	33
8	Smiths Beach Resort, Yallingup	33

REF.	HOTELS	PAGE
9	Cape Lodge, Yallingup	33
10	Discovery Parks – Busselton	32
11	Hospitality Esperance, SureStay Collection by Best Western	35
12	RAC Karri Valley Resort, Pemberton	35
13	Sleepwell Motel Albany	35



LEEWIN SEASONAL EXPERIENCE: ART, WINE & FARM-TO-FORK INDULGENCE

Celebrating fine wine, food and the arts, this tour is the most elegant way to be introduced to the Leeuwin Estate. Upon arrival, admire the contemporary artworks that feature on the labels of Leeuwin's premium 'Art Series' range of wines. A tutored wine tasting of five Leeuwin Estate wines accompanied by Western Australian delicacies, precedes lunch in the restaurant.

Includes:

- Welcome glass of Brut • Tutored wine tasting with chef canapés • 3-course lunch paired with Art Series wines

Operator: Leeuwin Estate

Duration: 4 hours

Departs: Daily from Leeuwin Estate, Margaret River at 11am

Not suitable for children under 18 yrs.

	Adult
Wine Experience & Lunch	\$345*



PREMIUM FULL DAY WINE TOUR

This premium wine tour offers the ultimate Margaret River food and wine experience. Start the day with an exclusive wine tasting at Howard Park. Continue on to Passel Estate for a wine and cheese pairing experience, followed by Peacetree Estate for a bespoke seated wine tasting. For lunch, enjoy a three-course meal at Vasse Felix with two glasses of premium wine. Finish the day with a seated wine tasting, followed by a visit to the vault.

Includes:

- 4 wine tastings
- 3 course lunch and 2 glasses of wine at Vasse Felix
- Wine and cheese tasting at Passel Estate
- Return transfers from selected Margaret River Region accommodation

Operator: Harvest Tours

Duration: 7 hours

Departs: Mon to Sat from Margaret River at 10am

Not suitable for children under 18 yrs.

	Adult
Full Day Tour	\$305*



MARGARET RIVER SCENIC HELICOPTER FLIGHTS

Enjoy a superb coastal flight over renowned wineries, stunning beaches and dramatic surf breaks, iconic historical landmarks, beautiful forests and Margaret River itself! Choose to fly to either Cape Naturaliste or Cape Leeuwin lighthouse on the 60 minute scenic flight.

Includes:

- Scenic flight over the Margaret River region
- Informative commentary

Operator: Scenic Helicopters

Duration: 30 minutes or 60 minutes

Departs: Daily from Margaret River Airstrip, on request

	Adult	Child 4-12 yrs
30 Minute Flight	\$495*[^]	\$245*[^]
60 Minute Flight	\$995*[^]	\$495*[^]

[^]Price based on minimum 3 adults.

*PRICES ARE A GUIDE ONLY, subject to change and availability and are in Australian Dollars. Prices are per person, unless otherwise specified and based on travel in low season. For full terms and conditions, refer to the Booking Conditions on the inside back cover of this brochure.

SOUTH WEST TOURS & MARGARET RIVER REGION ACCOMMODATION



COASTAL & WILDLIFE ECO TOUR

Discover the stunning coastal scenery and wildlife of the Margaret River Region with born and bred local guides. Visit Meelup Regional Park and view the diverse flora and beautiful beaches. See the ancient limestone cliffs of Cape Naturaliste and spot dolphins, plus whales and wildflowers (Jun-Dec). Take photos on an interpretive walk along the Cape to Cape Track, then indulge in a local gourmet platter and relax on a unique kangaroo safari.

Includes:

- Gourmet platter and glass of local wine or beer
- Use of binoculars • Local guides
- Return transfers from Busselton and Dunsborough accommodation (pick up fee applies for other areas)

Operator: South West Eco Discoveries

Duration: 3 hours 30 minutes

Departs: Daily from Margaret River Region at 9am (Apr – Jun, Sep – Mar)

	Adult	Child 2-14 yrs
Half Day Tour	\$175*	\$90*



GAP & NATURAL WONDERS

Travel through Torndirrup National Park and walk the nature trail up Stony Hill and admire 360 degree views from the summit. Continue to Frenchman Bay before heading to the iconic Gap and Natural Bridge. At The Gap, feel the power of the wind and water from the protected walkway lookout. Hear the pounding waves as they thrash the granite walls. Take in the magnificent vistas from the Albany Wind Farm.

Includes:

- Admission to Torndirrup National Park
- Morning tea
- Travel by air-conditioned mini van
- Services of a knowledgeable guide

Operator: Albany Tours

Duration: 3 hours 30 minutes

Departs: Wed to Sat from Albany Visitor Centre at 9am

	Adult	Child 0-16 yrs
Morning Tour	\$132*	\$119*



BEACH & FOREST ECO ADVENTURE

Experience the stunning wilderness in Australia's South West on this half day guided eco adventure through four dramatically different ecosystems. Join an award-winning guide and explore towering Karri forests, shifting Yeagarup dunes, seasonal wildflowers, and the rugged Southern Ocean coast. The perfect inclusion to any South West holiday itinerary.

Includes:

- Picnic lunch (Morning option)
- Afternoon tea (Afternoon option)
- Travel by air-conditioned 4WD vehicle
- Local guide
- National Park fees

Operator: Pemberton Discovery Tour

Duration: 5 hours

Departs: Daily from Pemberton at 9am or 2pm

	Adult	Child 6-15 yrs
Half Day Tour	\$195*	\$95*

DISCOVERY PARKS – BUSSELTON



Superior Safari Tent

583-585 Bussell Highway, Busselton

MAP PAGE 31

From **\$172***

- ❖ Direct access to Geographe Bay
- ❖ Safari Tents and 2 Bedroom Cabins feature decks
- ❖ Families will enjoy the pool and children's playground

Location: Positioned at the entrance to Margaret River region. Distances: Town centre 4.4km, Beach 1km.

Property Features: Pool (heated), Barbecue, Children's playground, Guest Laundry, Parking (free), 9 rooms.

Room Features: Air-conditioning, Balcony, Tea/coffee making facilities, Kitchenette, Television, Ironing facilities (Superior 2 Bedroom Cabin), Hair dryer (Superior 2 Bedroom Cabin).

Max Capacity: Superior Safari Tent/Superior 2 Bedroom Cabin – 4.



ABBAY BEACH RESORT, BUSSELTON



Studio Spa Suite

595 Bussell Highway, Busselton

MAP PAGE 31

From **\$354***

- ❖ Set on four hectares of landscaped gardens and a serene lake
- ❖ Comfortable and spacious rooms with stunning views
- ❖ Families will love the three pools and children's playground

Location: On the beachfront of Geographe Bay and close to Busselton's tourist precinct. Distances: Town centre 7.7km, Beachfront.

Property Features: Pools (3 – 2 outdoor, 1 heated indoor), Restaurants (2), Bars (3), Room service (except 2 and 3 Bedroom), Gym, Tennis court, Squash court, Children's playground, Bicycle hire, Barbecue area, Laundry service, 213 rooms.

Room Features: Air-conditioning, Balcony, Kitchen (1, 2 and 3 Bedroom), Limited cooking facilities (Studio Spa Suite), Laundry (2 and 3 Bedroom), Ironing facilities, Spa bath, Hair dryer.

Max Capacity: Studio Spa Suite – 2, 1 Bedroom – 3, 2 Bedroom – 5, 3 Bedroom – 7.



SEASHELLS YALLINGUP



1 Bedroom

1 Yallingup Beach Road, Yallingup
MAP PAGE 31

From **\$219**^{**^}

- ❖ Ideal getaway for singles, couples and families
- ❖ Self-contained, modern one and two bedroom apartments
- ❖ Adjacent to a bar with live entertainment and a fireplace in the guest lounge

Location: A quick walk to Yallingup Beach and adjacent to Heritage Listed Caves House Hotel. Distances: Town centre 1km, Beach 500m.

Property Features: Restaurant, Bar, Guest lounge, Barbecue area, Lift, Parking (free), 12 rooms.

Room Features: Air-conditioning, Balcony, Tea/coffee making facilities, Kitchen, Cable TV, In-room movies (free), Laundry, Spa bath (except some 1 Bedrooms), Hair dryer, Safe.

Max Capacity: 1 Bedroom – 3, 2 Bedroom – 5.

^Price applies Sun-Thu nights.



FREE

CAPE LODGE, YALLINGUP



Garden View

3341 Caves Road, Yallingup
MAP PAGE 31

From **\$578**^{**^}

- ❖ Private country-house hotel in the heart of Margaret River
- ❖ The iconic Cape Lodge Restaurant showcases the best of the region's produce
- ❖ Spacious and airy rooms offer garden or lakeside views

Includes full breakfast daily, in-room refreshments, afternoon tea, wine experience and a complimentary pre-dinner drink.

Location: Centrally located between Margaret River, Dunsborough and Yallingup. Distances: Town centre 12km, Beach 10km.

Property Features: Pool, Restaurant, Wine Lounge, Tennis court, Parking (free), 22 rooms.

Room Features: Air-conditioning, Mini bar, Tea/coffee making facilities, Smart TV, Hair dryer, Safe, All rooms non smoking.

Max Capacity: Garden View/Garden Deluxe/Lakeside – 2.

^Minimum 2 night stay applies.



FREE

SMITHS BEACH RESORT, YALLINGUP



1 Bedroom

67 Smiths Beach Road, Yallingup
MAP PAGE 31

From **\$483**^{**^}

- ❖ Perfectly positioned on Smiths Beach overlooking the Indian Ocean
- ❖ Generous size rooms with large, heated infinity pool and children's wading pool
- ❖ Direct access to the renowned Cape to Cape walking track

Location: In the heart of the Margaret River wine region, close to Dunsborough and Yallingup. Distances: Town centre 7km, Beachfront.

Property Features: Pools (2 – outdoor & kid's wading pool), Restaurant, Gourmet deli and wine store, Yoga (extra charge), Tennis court, In-room massages, Parking (outdoor – free), Non smoking, 60 rooms.

Room Features: Air-conditioning, Balcony, Kitchen with microwave and dishwasher, Tea/coffee making facilities, Cable TV, Washer/dryer, Bathrobes, Hair dryer.

Max Capacity: 1 Bedroom/Ocean View Villa – 2, 2 Bedroom Garden Villa/Ocean View Villa – 4 adults or 2 adults/3 children, 3 Bedroom Beach House/Ocean View Villa – 6, 4 Bedroom Beach House – 8.

^Price applies Mon-Thu nights. Minimum 2 night stay applies.



FREE



MARGARET RIVER REGION & SOUTH WEST ACCOMMODATION

MARGARETS BEACH RESORT, GNARABUP BEACH



Studio

1 Resort Place, Gnarabup Beach
MAP PAGE 31

From **\$236***

- ❖ Wide variety of rooms, ideal for families or couples
- ❖ Families will love the barbecue area and adjoining children's playground
- ❖ Steps to pristine Gnarabup Beach

Location: A 10 minute drive to the Margaret River township and close to wineries and major attractions. Distances: Margaret River Township 10km, Beach 500m.

Property Features: Pool (heated outdoor – seasonal), Restaurant, Bar, Sauna, Children's playground, Barbecue area, 55 rooms.

Room Features: Air-conditioning, Kitchen with microwave and dishwasher (2 Bedroom, 2 Bedroom Spa, 2 Bedroom Spa Townhouse, 4 Bedroom Beach House), Limited cooking facilities (Studio, 1 Bedroom Spa), Washer/dryer, Ironing facilities.

Max Capacity: Studio/1 Bedroom Spa – 2, 2 Bedroom/2 Bedroom Spa/2 Bedroom Spa Townhouse – 6, 4 Bedroom Beach House – 8.



MARGARETS IN TOWN APARTMENTS, MARGARET RIVER



Standard

6 Tunbridge Street, Margaret River
MAP PAGE 31

From **\$226***

- ❖ Modern apartments within walking distance to local restaurants
- ❖ In the heart of Margaret River
- ❖ Heated swimming pool, tennis court and bar

Location: Steps from local shops, markets and galleries and 10 minutes' drive to Margaret River beaches. Distances: Town centre 100m, Beach 10km.

Property Features: Pool (heated outdoor), Bar, Tennis court, Barbecue area, Guest laundry, Parking (free), 61 rooms.

Room Features: Air-conditioning, Balcony, Microwave, Kitchen with dishwasher (except Standard), Laundry (except Standard), Ironing facilities, Spa bath (except Standard), Hair dryer, Safe.

Max Capacity: Standard/1 Bedroom/1 Bedroom Spa – 2, 2 Bedroom Loft – 4, 3 Bedroom Townhouse – 6.



ARAVINA ESCAPES, YALLINGUP



One Bedroom King



One Bedroom King

61 Thornton Road, Yallingup
MAP PAGE 31

From **\$300***

- ❖ Modern cabins offering exquisite vineyard views
- ❖ Vineyard and tap house on Estate, crafting a range of wine and beers
- ❖ Onsite lunch dining, wine tasting and live music

Location: Set in the heart of the Margaret River wine region, located at the beautiful Aravina Estate in Yallingup. Distances: Town centre 12.9km, Beach 12.7km.

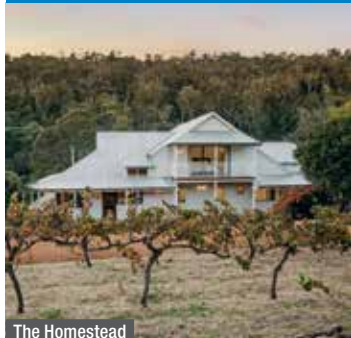
Property Features: Restaurant, Café, Cellar door, Barbecue, Parking (free), Non smoking, 21 cabins.

Room Features: Air-conditioning, Balcony, Barbecue, Tea/coffee making facilities, Kitchenette with microwave and fridge, Projector screen viewing experience.

Max Capacity: One Bedroom King – 3, Two Bedroom Twin – 4.



AMPERSAND ESTATES & RAINFALL DISTILLERY



The Homestead



Settlers' Cottage

9883 Vasse Highway, Peerabeelup
MAP PAGE 31

From **\$895***

- ❖ Luxury winery & distillery escape offering 3 private residences
- ❖ Ampersand Estates Pinot Noir was awarded the Western Australia Peoples' Choice Award
- ❖ Perfect for families seeking a luxurious secluded escape

Includes gourmet breakfast hamper daily and complimentary wine tasting experience.

Location: Nestled in the heart of the South West connecting the Margaret River & Southern Forests regions. Distances: Pemberton 30km, Margaret River Region 90km.

Property Features: World Class Cellar Door, Distillery, Botanical Gardens, Restaurant, Café, Summit Studio Fitness centre, Barbecue, Guest laundry, Parking (outdoor – free), 12 rooms.

Room Features: Air-conditioning, Fans, Private balcony (scenic estate views), Fireplace, Tea/coffee making facilities, Kitchen, Barbecue, Mini bar, Streaming service, Laundry, Ironing facilities, Bathrobes, Hair dryer.

Max Capacity: Settlers' Cottage – 4, Vintner's Residence/The Homestead – 10.



RAC KARRI VALLEY RESORT, PEMBERTON



Lakeside

Vasse Highway, Pemberton
MAP PAGE 31

From **\$227***[^]

- ❖ Rustic two and three bedroom chalets and lakeside rooms available
- ❖ Families will love the canoeing and mini golf
- ❖ The Lakeside Restaurant offers breathtaking views of Lake Beedelup

Location: Positioned on the banks of Lake Beedelup and close to local wineries. Distances: Town centre 23km, Beach 22km.

Property Features: Restaurant, Tennis court, Animal farm, Children's playground, Mini golf, Barbecue area, Convenience store, Bottle shop, Guest laundry, 62 rooms.

Room Features: Balcony, Fan, Tea/coffee making facilities, Limited cooking facilities with microwave and stove (2 and 3 Bedroom Chalets), Ironing facilities, Hair dryer.

Max Capacity: Lakeside – 3, 2 Bedroom Chalet Forest View – 4, 3 Bedroom Chalet Forest View/3 Bedroom Chalet Lake View – 7.

[^]Price applies Sun-Thu nights.

Internet and mobile phone reception may be limited on some networks.



FREE

HEYSCAPE DENMARK



One Bed Ocean Cabin – Denmark

William Bay, Denmark
MAP PAGE 31

From **\$586***[^]

- ❖ Cosy nature stays situated on Raintree Estate
 - ❖ Eco-friendly cabins with premium amenities
 - ❖ Indulge in exceptional dam to plate culinary experiences on this regenerative farm
- Includes light breakfast daily.**

Location: Located on Raintree Estate neighbouring William Bay National Park. Distances: Town centre 14km, Beach 5km.

Property Features: Bar, Barbecue, Bike hire, Parking (outdoor – free), Non smoking, 15 rooms.

Room Features: Outdoor bath, Air-conditioning, Fan, Tea/coffee making facilities, Kitchen, Bathrobes.

Max Capacity: One Bed Ocean Cabin – Denmark – 2, Heyscape Two Bed Cabin – 4.

[^]Minimum 2 night stay applies.

SLEEPWELL MOTEL ALBANY



Comfort Room

270 Albany Highway, Albany
MAP PAGE 31

From **\$175***

- ❖ Comfortable accommodation close to the town centre
- ❖ Great for families with children's playground, tennis court and indoor heated pool

Location: A four minute drive to Albany town centre. Distances: Town centre 2.3km, Beach 4.6km.

Property Features: Pool (heated indoor), Spa, Tennis court, Barbecue, Restaurant, Bar, Room service, Guest laundry, Parking (outdoor – free), Non smoking, 60 rooms.

Room Features: Air-conditioning, Mini refrigerator, Tea/coffee making facilities, In-house movies, Ironing facilities (Family Rooms), Free Wi-Fi (Family Rooms).

Max Capacity: Comfort Room – 3, Family Room – 4.

Prices for room and continental breakfast also available.



FREE

HOSPITALITY ESPERANCE, SURESTAY COLLECTION BY BEST WESTERN



Standard Queen + Single

44 The Esplanade, Esperance
MAP PAGE 31

From **\$190***

- ❖ Spacious, well-appointed motel and executive rooms
 - ❖ Outdoor swimming pool with guest barbecue facilities
 - ❖ Restaurant and bar have a children's menu and are open daily
- Includes continental breakfast daily.**

Location: Opposite Esperance Bay in the heart of Esperance. Distances: Town centre 50m, Beach 50m.

Property Features: Pool, Restaurant, Bar, Room service, Guest laundry, Parking (free), 50 rooms.

Room Features: Air-conditioning, Tea/coffee making facilities, Mini bar, Cable TV, Ironing facilities, Hair dryer, Non smoking.

Max Capacity: Executive King – 2, Standard Queen + Single/Queen + Single Motel/Deluxe Queen + Single – 3, Family Room – 4.

Prices for room and full breakfast also available.



FREE



Monkey Mia, Shark Bay World Heritage Area

Courtesy of Tourism Western Australia

CORAL COAST

Pristine beaches, clear blue water and incredible wildlife interactions – it's all here on the Coral Coast. From Cervantes to Exmouth, there is an experience for everyone. View dolphins, sea turtles, manta rays and Whale sharks in the World Heritage Listed Ningaloo Reef. See the local Bottlenose dolphins feeding in the shallow waters of Monkey Mia. Discover the Shark Bay World Heritage Area with its white sand beaches and ochre coloured sand dunes. Explore Kalbarri, one of Western Australia's favourite national parks for wildflowers. Be sure to take a look through the red rock frame known as Nature's Window.

SEE

- During July to October, admire the impressive wildflower displays in Kalbarri National Park

DO

- Travel to Nambung National Park and walk between the amazing limestone pillars known as The Pinnacles
- Don't miss the once-in-a-lifetime experience of swimming with the gentle giants of the sea – the Whale shark – at Ningaloo Reef

EAT & DRINK

- Enjoy fish and chips as you watch the sunset over the Indian Ocean at Coral Bay

WHAT'S ON

Whale Shark Season, Exmouth

Mid March to September

Mullewa Muster and Rodeo

June



REF.	APARTMENTS	PAGE
1	Kalbarri Edge Resort	38
2	Nesuto Geraldton Apartment Hotel	38
3	RAC Exmouth Cape Holiday Park	40
REF.	HOTELS	PAGE
4	Discovery Parks – Carnarvon	38
4	Hospitality Carnarvon, SureStay Collection by Best Western	39
2	Hospitality Geraldton, SureStay Collection by Best Western	38
3	Mantarays Ningaloo Beach Resort, Exmouth	40
3	Potshot Hotel Resort, Exmouth	40
5	RAC Monkey Mia Dolphin Resort	39
6	Sal Salis Ningaloo Reef	39



Nature's Window, Kalbarri National Park

Courtesy of Tourism Western Australia



DELUXE WHALE SHARK ADVENTURE

Enjoy a day of fun on Ningaloo Reef observing or swimming with the whale sharks. Spotter planes are used to maximise your time with these gentle giants. You may also see manta rays, dugongs and dolphins.

Includes:

- Guided snorkel on Ningaloo Reef (Snorkeller option)
- Use of snorkelling equipment (Snorkeller option)
- Marine biology presentation
- Lunch, refreshments, morning and afternoon tea
- Souvenir video and photos
- Return transfers from Exmouth accommodation

Operator: Exmouth Dive & Whalesharks Ningaloo

Duration: 8 hours

Departs: Daily from Exmouth at 7am (Mar – mid Aug)

Family prices also available. Not suitable for children under 6 yrs.

	Adult	Child 6-16 yrs
Observer	\$299*	\$299*
Snorkeller	\$625*	\$550*



DELUXE MEGA FAUNA SWIM TOUR

Cruise to a snorkel site on the Ningaloo Reef to see beautiful corals and colourful fish, even catch sightings of turtles and dugongs. Then venture out to see the humpback whales, with the unique opportunity to swim with these gentle giants.

Includes:

- Observe or swim with humpback whales
- Use of snorkelling equipment (snorkeller option)
- Expert guide
- Lunch and refreshments
- Return transfers from Exmouth accommodation

Operator: Exmouth Dive & Whalesharks Ningaloo

Duration: 8 hours

Departs: Daily from Exmouth at 7am (Aug – Oct)

Family prices also available. Not suitable for children under 6 yrs.

	Adult	Child 6-16 yrs
Observer	\$299*	\$199*
Snorkeller	\$625*	\$600*^

^Not suitable for children under 13 yrs.



A DAY AT DIRK

Spend the day at Dirk Hartog Island and discover the natural beauty of Western Australia's largest island. After morning tea at a beachside café, join a 4WD tour of the rugged coastal cliffs and giant blowholes. Visit a calm marine sanctuary to look for dolphins, sharks, turtles and stingrays, followed by a seafood barbecue lunch and a gin tasting. The afternoon is free to relax or try stand-up paddle boarding or kayaking.

Includes:

- Return boat transfer from Denham
- Morning tea • Seafood lunch
- 4WD adventure • Gin tasting

Operator: Island Life Adventure

Duration: 9 hours

Departs: Tue to Sun from Denham Commercial Jetty at 8:15am or RAC Monkey Mia Dolphin Resort at 7:45am (Mar – Nov)

	Adult	Child 3-16 yrs
Full Day Tour	\$324*	\$254*



ABROLHOS ISLANDS CRUISE – ECO ABROLHOS CRUISES

Explore the Houtman Abrolhos Islands National Park, often called the Galapagos Islands of the Indian Ocean, on a five day cruise departing from Geraldton. Located just 60 kilometres off the coast of Geraldton, which is a 4.5 hour drive north of Perth, this extraordinary archipelago is known for its rugged beauty, rich marine life, and fascinating history.

VESSEL FEATURES

- Spacious top deck with 360° views
- Comfortable lounge and dining areas
- Licensed bar • 17 privately ensuited cabins
- Dhu Force 60 foot day vessel
- Maximum of 32 guests

CABIN FEATURES

- Air-conditioning • Private en suite
- Hair dryer & personal amenities

INCLUDES

- Onboard accommodation • All meals on board
- Ocean to plate dining experience
- 24 hour tea, coffee and filtered water
- Daily excursions • Use of snorkelling equipment
- Fishing experience and daily Lobster Pot Pull
- One way flight from Geraldton to/from the Abrolhos Islands
- Return transfers from Geraldton accommodation

Available at Extra Charge

- Wi-Fi • Alcoholic and non-alcoholic beverages

SPECIALTY CRUISES

- WA Wine & Seafood Cruise
- Shipwrecks & Wonders Cruise
- Pearls & Plates Event Long Table Lunch

Ask your travel agent for dates and prices.

4 NIGHT ABROLHOS ISLANDS CRUISE

Snorkel in the underwater treasure of the Abrolhos Islands, where vibrant coral reefs teem with life, and playful sea lions grace the surrounding waters.

Day 1: Geraldton to Wallaby Group of islands

Day 2: Batavia

Day 3: Easter Group

Day 4: Southern Group

Day 5: Southern Group

From Geraldton at 8am or 10am:

2026: Mar 26, Apr 16, May 1, Oct 1

2027: Apr 8, Sep 22, Oct 20

	2026	2027
King Single Bunks	\$4370*^	\$4600*^
Twin Share – Main Deck		
Double Cabin – Main Deck	\$4870*^	\$5115*^
King Deluxe – Main Deck	\$5500*^	\$5775*^
King Deluxe – Bridge Deck	\$5500*^	\$5775*^

^A \$11 DBCA Landing Fee per person is payable at the time of booking. Fees are subject to change without notice. Children: 0 to 14 yrs – not catered for. Due to unforeseen circumstances such as weather and tides, itinerary may be subject to change without notice. Sole use prices also available.



CORAL COAST ACCOMMODATION

HOSPITALITY GERALDTON, SURESTAY COLLECTION BY BEST WESTERN ◆◆◆◆



Queen Motel

169 Cathedral Avenue, Geraldton
MAP PAGE 36

From **\$190***

- ◆ Spacious and well-appointed motel and executive rooms
- ◆ Restaurant and bar have a children's menu and are open daily
- ◆ Outdoor swimming pool with guest barbecue facilities

Includes continental breakfast daily.

Location: A 15 minute walk or three minute drive to the city centre, shops and local attractions. Distances: Town centre 1.2km, Beach 1km.

Property Features: Pool (outdoor), Restaurant, Bar, Room service, Guest laundry (free), Parking (free), 50 rooms.

Room Features: Air-conditioning, Tea/coffee making facilities, Mini bar, Cable TV, Ironing facilities, Hair dryer, All rooms non smoking.

Max Capacity: Queen Motel/Premium Queen – 3, King Executive – 2.

Prices for room and full breakfast also available.



FREE

NESUTO GERALDTON APARTMENT HOTEL ◆◆◆◆



Premier Studio

298 Chapman Road, Geraldton
MAP PAGE 36

From **\$322***

- ◆ Within walking distance to cafés, restaurants and shops
- ◆ Spacious accommodation, perfect for couples and families
- ◆ Relax in the outdoor pool and hot tub

Location: Set along Western Australia's Coral Coast, only metres from the Champion Bay and the Indian Ocean. Distances: Town centre 2km, Beach 600m.

Property Features: Pool, Spa, Barbecue, Parking (free), Non smoking, 79 rooms.

Room Features: Air-conditioning, Tea/coffee making facilities, Microwave, Cable TV, Ironing facilities, Hair dryer.

Max Capacity: Premier Studio/1 Bedroom – 2, 2 Bedroom – 4, 3 Bedroom – 6.



FREE

KALBARRI EDGE RESORT ◆◆◆◆



Studio

22 Porter Street, Kalbarri
MAP PAGE 36

From **\$210***

- ◆ Licensed restaurant open 7 days for breakfast and dinner featuring a Kid's menu
- ◆ Guest barbecue area, relaxing pool and giant chess set for family fun
- ◆ Choose a spacious Spa Apartment for the ultimate rest and relaxation

Location: A five minute walk to the downtown area, close to the beach and 400 metres to the river. Distances: Town centre 150m, Beach 550m.

Property Features: Pool, Restaurant, Bar, Barbecue area, Guest laundry, Non smoking, Parking (free), 76 rooms.

Room Features: Air-conditioning, Patio (1 and 2 Bedroom), Tea/coffee making facilities, Limited cooking facilities, Microwave, Dishwasher (1 and 2 Bedroom), Barbecue (1 and 2 Bedroom), Cable TV, Ironing facilities, Washer/dryer (1 and 2 Bedroom), Hair dryer, Spa bath (1 and 2 Bedroom).

Max Capacity: Studio – 3, 1 Bedroom Spa – 2, 2 Bedroom Spa – 5.



FREE

DISCOVERY PARKS – CARNARVON ◆◆◆◆



Superior Studio

546 Robinson Street, Carnarvon
MAP PAGE 36

From **\$176***

- ◆ Studio and 1 Bedroom Cabins feature decks
- ◆ Cool off in the outdoor swimming pool
- ◆ Families will love the adventure playground and the giant outdoor games

Location: Set in a quiet location on 11 acres of tropical gardens. Distances: Town centre 4.5km, Beach 5km.

Property Features: Pool, Children's playground, Barbecue area, Kiosk, Guest laundry, Parking (free), Non smoking, 6 rooms.

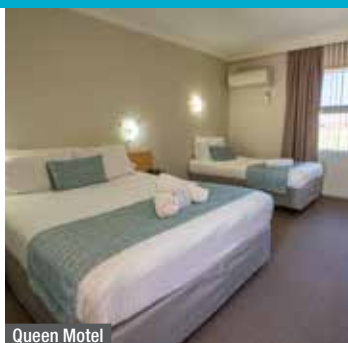
Room Features: Air-conditioning, Balcony, Tea/coffee making facilities, Kitchen with microwave, Ironing facilities, Hair dryer.

Max Capacity: Superior Studio – 2, Superior 1 Bedroom – 4.



FREE

HOSPITALITY CARNARVON, SURESTAY COLLECTION BY BEST WESTERN ◆◆◆◆



Queen Motel

6 West Street, Carnarvon
MAP PAGE 36

From **\$170***

- ◆ Outdoor swimming pool with guest barbecue facilities
- ◆ On-site restaurant and bar offer a children's menu
- ◆ Spacious, good value rooms with all the creature comforts you need

Includes continental breakfast daily.

Location: Adjacent to the Gascoyne River and Fascine Boardwalk and playground.
Distances: Town centre 800m, Beach 200m.

Property Features: Pool, Restaurant, Bar, Room service, Barbecue area, Guest laundry (free), Parking (free), 45 rooms.

Room Features: Air-conditioning, Mini bar, Tea/coffee making facilities, Cable TV, Ironing facilities, Hair dryer, All rooms non smoking.

Max Capacity: Queen Motel – 3, Executive Queen/Executive King – 2, Family Room – 4.

Prices for room and full breakfast also available.



FREE

RAC MONKEY MIA DOLPHIN RESORT ◆◆◆◆



Garden View

1 Monkey Mia Road, Monkey Mia
MAP PAGE 36

From **\$289***

- ◆ Set within the Shark Bay World Heritage Listed Area
- ◆ Families will love the convenience of direct beach access from the resort
- ◆ Daily dolphin feeding and interaction

Location: Situated on the white sand beach of Shark Bay. Distances: Town centre 25km, Beachfront.

Property Features: Pools (2 – including children's), Restaurant, Bar, General store, Camp kitchen, Children's playground, Mini golf, Guest laundry, 160 rooms.

Room Features: Air-conditioning, Balcony (Beach View, Superior Beach View), Tea/coffee making facilities, In-room movies (free), Hair dryer.

Max Capacity: Garden View/Family Studio – 4, Beach View – 2, Superior Beach View – 3. Other room types also available.

A Monkey Mia Conservation Park Pass is required to enter the Park and is not included in the accommodation price. Refer to page 7 for information on park fees and how to purchase passes.



FREE

SAL SALIS NINGALOO REEF ◆◆◆◆



Wilderness Tent



Wilderness Tent

Yardie Creek Road, Cape Range National Park, via Exmouth
MAP PAGE 36

From **\$2180*^**

- ◆ Off-grid safari camp nestled in the sand dunes of Cape Range National Park
- ◆ Uninterrupted coastal and night sky views of Ningaloo Reef from tent
- ◆ Fall asleep to the sounds of waves on the beach

Includes chef-prepared meals and bar featuring local beer, wine and spirits.

Location: Located on the North West Cape, just an hour's drive south of Exmouth.
Distances: Town centre 215km, Beachfront.

Getting There: A scheduled coach transfer to/from Learmonth Airport, Exmouth connecting with Qantas flights **\$160*** per person one way. Self-drive option also available.

Property Features: Guest lodge, Chef prepared meals, Guided walks, Kayaking, Snorkelling, Library, Self-service bar, 16 eco-luxury safari style tents.

Room Features: King or twin beds, Shaded deck, Private eco en suite, Hammock.

Max Capacity: Wilderness Tent/Honeymoon Tent – 2 adults/1 child.

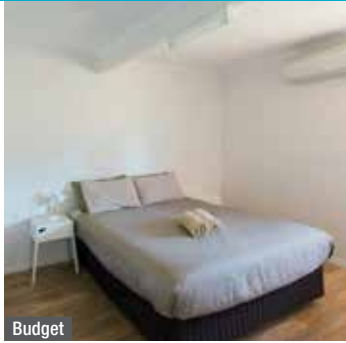
^ Minimum 2 night stay applies. Children under 10 not permitted.

Sal Salis is closed from 17 November to 31 December 2026.



CORAL COAST ACCOMMODATION

POTSHOT HOTEL RESORT, EXMOUTH



Budget

561 Murat Road, Exmouth
MAP PAGE 36

From **\$180***

- ❖ Large lagoon-style pool
- ❖ Choose from motel-style rooms or two bedroom apartments
- ❖ Huge outdoor area with barbecue facilities

Location: Within easy walking distance to shops, restaurants and bars. Distances: Town centre 500m, Beach 3km.

Property Features: Wi-Fi (common areas – extra charge), Pools (2), Barbecue area, Restaurant, Bars (3), Guest laundry, 125 rooms.

Room Features: Air-conditioning, Limited cooking facilities (2 Bedroom Apartment), Tea/coffee making facilities, Mini refrigerator (Budget/Standard Rooms), Hair dryer (Standard Room).

Max Capacity: Budget/Standard – 2, 2 Bedroom Apartment – 4.



RAC EXMOUTH CAPE HOLIDAY PARK



3 Truscott Crescent, Exmouth
MAP PAGE 36

From **\$173***

- ❖ Self-contained cabins and motel style rooms
- ❖ Great location for family and couple getaways
- ❖ Lagoon pool with barbecue facilities and sun lounges

Location: Just a 20 minute walk to the town centre and a 10 minute walk to the beach. Distances: Town centre 1.4km, Beach 1.8km.

Property Features: Pools (2), Children's playground, Recreation room, Barbecue area, Shop, Guest laundry, Parking (free), 42 rooms.

Room Features: Air-conditioning, Tea/coffee making facilities, Limited cooking facilities with microwave, Hair dryer.

Max Capacity: Blue Reef Motel/Blue Reef Studio/1 Bedroom Cabin – 2, 2 Bedroom Cabin – 5, 2 Bedroom Pool View Cabin – 6.



MANTARAYS NINGALOO BEACH RESORT, EXMOUTH



Classic

Madaffari Drive, Exmouth
MAP PAGE 36

From **\$347***

- ❖ Award-winning restaurant showcases the region's freshest seafood & produce
- ❖ Guests can relax by the pool or keep active in the gym
- ❖ Just steps away from the beach to enjoy swimming and coastal walks

Location: Nestled on Sunrise Beach and the gateway to Ningaloo Reef, where whale sharks swim (Mar to Aug). Distances: Town centre 5km, Beachfront.

Property Features: Pool (resort style), Restaurant, Bar, Gift shop, Room service, Gym, Guest laundry, Parking (free), 68 rooms.

Room Features: Air-conditioning, Balcony, Tea/coffee making facilities, Kitchen (2 Bedroom), Foxtel, Ironing facilities, Hair dryer.

Max Capacity: Classic/Mantaray/Mantaray Ocean View/1 Bed Apartment/1 Bed Ocean View Pavilion – 2, 2 Bed Apartment/2 Bed Apartment Ocean View/2 Bed Ocean View Pavilion – 4.



2 Bedroom Apartment



* FROM PRICES ARE A GUIDE ONLY, subject to change and availability and are in Australian Dollars. Prices are per room per night for 2 people, unless otherwise specified and based on the lowest room category for travel in low season. For full terms and conditions, refer to the Booking Conditions on the inside back cover of this brochure.



Joffre Gorge, Karijini National Park

Courtesy of Tourism Western Australia/@cjmaddock

THE PILBARA & SURROUNDS

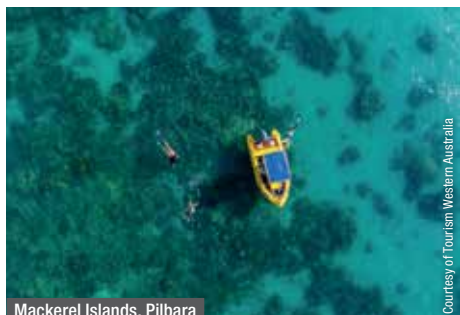
Encompassing over 500,000 square kilometres, the Pilbara region boasts ancient natural landscapes, Aboriginal rock art and a picturesque coastline. For spectacular scenery alone, it's hard to go past Karijini National Park. See steep gorges, swim in cool rock pools and admire stunning waterfalls. Snorkel the pristine coral reefs, relax on the white sand beaches of the Mackerel Islands or explore the Dampier Archipelago, a coastal wonderland comprising of 42 islands. Take in the charm of the picturesque coastal town of Onslow, the gateway to the Mackerel Islands.

SEE

- Watch the sun rise and set over the water from Onslow
- See Fortescue Falls, Karijini National Park's only spring fed waterfall

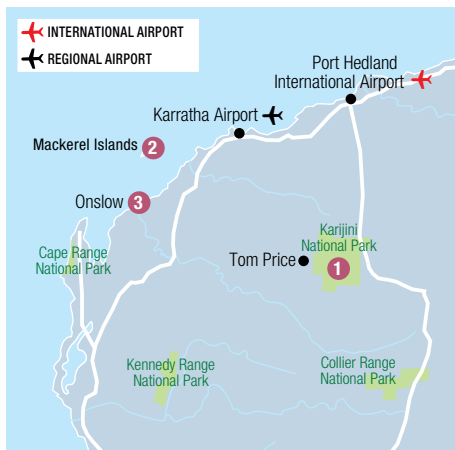
DO

- Swim in the peaceful plunge pools at Karijini National Park
- Head to Burrup Peninsula and discover the unique art, history and culture of the Aboriginal people of the Pilbara



Mackerel Islands, Pilbara

Courtesy of Tourism Western Australia



REF.	PROPERTY	PAGE
1	Karijini Eco Retreat	41
2	Mackerel Islands	42
3	Onslow Beach Resort	42

KARIJINI ECO RETREAT



Deluxe Eco Tent King



Luxury Eco Tent

Savannah Campground, via Weano Road, Karijini National Park
MAP PAGE 41

From **\$360***

- ❖ Safari-style eco tents all with private en suites
 - ❖ Tents have private patios with stunning views
 - ❖ Joffre gorge is within easy walking distance from the Retreat
- Includes light breakfast daily.**

Location: In the heart of Karijini National Park. Distances: Tom Price town centre 80km.
Property Features: Restaurant, Bar, Kiosk, Barbecue area, Amphitheatre, 53 tents.
Room Features: Air-conditioning (Luxury Eco Tent), Patio, Linen, Private en suite.
Max Capacity: Deluxe Eco Tent King/Twin/Premium Eco Tent – 2, Deluxe Eco Tent/Triple/Quad – 4, Luxury Eco Tent – 3 adults or 2 adults/2 children.
Park permits and vehicle fees apply and are not included in the price. Refer to page 7 for information on National Park fees and how to purchase passes.
Resort is closed 1 – 28 Feb 27.



*FROM PRICES ARE A GUIDE ONLY, subject to change and availability and are in Australian Dollars. Prices are per person twin share, unless otherwise specified and based on the lowest room category and travel in low season. For full terms and conditions, refer to the Booking Conditions on the inside back cover of this brochure.

THE PILBARA COAST ACCOMMODATION

ONSLow BEACH RESORT



Executive Suite

Corner Second Avenue and Third Street, Onslow
MAP PAGE 41

From **\$360***

- ◆ Gateway to the beautiful Mackerel Islands
- ◆ Absolute beachfront resort offers a relaxed coastal outback experience
- ◆ Dine at The Beach Club and enjoy spectacular views of Beadon Bay

Location: Shops and attractions are just steps away. Distances: Town centre 50m, Beachfront.

Getting There: 5 minute coach transfer to/from Onslow Airport. **\$10*** per person one way. Transfers are only available during hotel reception hours.

Property Features: Pool, Restaurant, Bar, Barbecue area, Stand-up paddle board and kayak hire (extra charge), Parking (free), 84 rooms.

Room Features: Air-conditioning, Balcony or patio, Kitchen with microwave and dishwasher, Tea/coffee making facilities, Cable TV, Washer/dryer, Hair dryer.

Max Capacity: Executive Suite/Pool View Suite/Ocean View Suite – 2, Family Suite – 2 adults/3 children.



MACKEREL ISLANDS



2 Bedroom Beachfront Cabin

Thevenard Island
MAP PAGE 41

From **\$1883*^**

- ◆ Cabins are solar powered and are completely self-contained
- ◆ Cabins have panoramic ocean views and positioned to provide privacy
- ◆ Free use of snorkel gear, stand-up paddle board and kayak

Includes self-cook meal supplies daily and return scenic flight transfers from Exmouth.

Location: Thevenard Island is located off the coast of Western Australia. Distances: Beachfront, Shop 50m.

Getting There: Scenic flights from Exmouth directly to Thevenard Island. Flight times are approximately 35 minutes.

Property Features: Games room, Barbecue area, General Store, Activities centre, Parking (mainland – extra charge), 12 rooms.

Room Features: Ocean views, Air-conditioning, Patio, Tea/coffee making facilities, Coffee pod machine, Kitchen with microwave, DVD player.

Max Capacity: 2 Bedroom Beachfront Cabin – 4, 3 Bedroom Beachfront Cabin – 6.

^Minimum 2 night stay applies. Resort closed 1 Dec 26 – 31 Mar 27.



3 Bedroom Beachfront Cabin

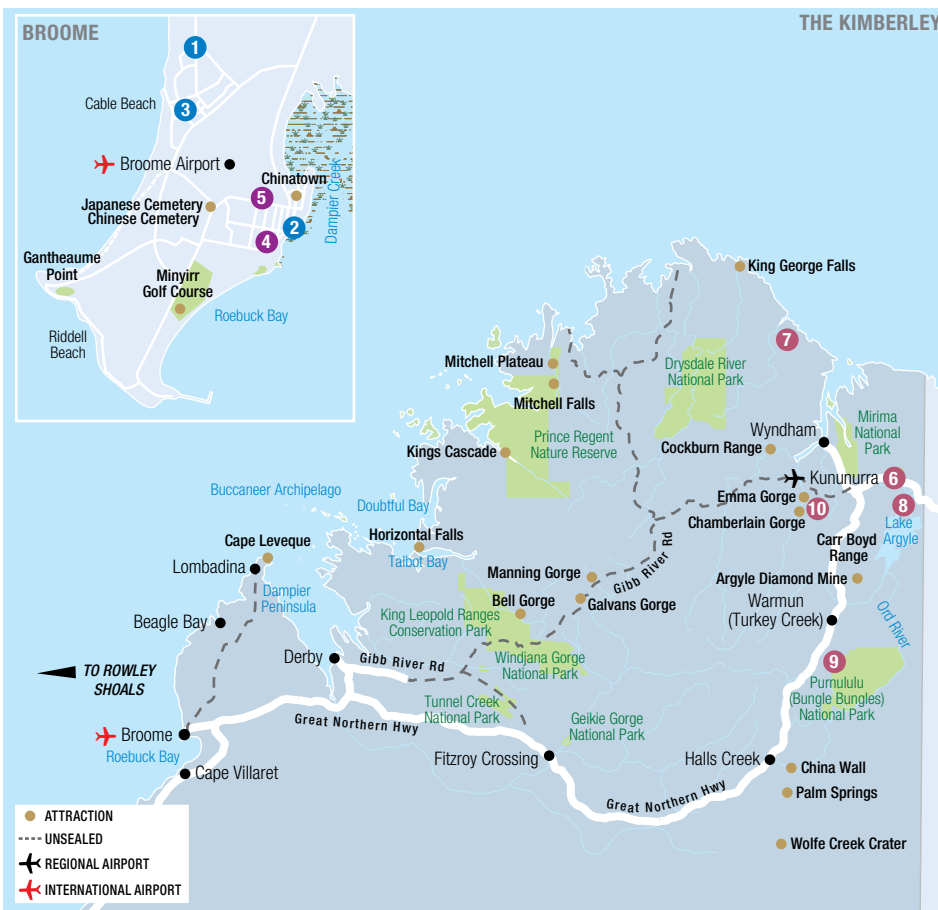


* FROM PRICES ARE A GUIDE ONLY, subject to change and availability and are in Australian Dollars. Prices are per room per night for 2 people, unless otherwise specified and based on the lowest room category for travel in low season. For full terms and conditions, refer to the Booking Conditions on the inside back cover of this brochure.



Cable Beach, Broome, West Kimberley

Courtesy of Tourism Western Australia



BROOME & THE KIMBERLEY

It's easy to be captivated by the laidback seaside town of Broome. The breathtaking beaches, fascinating history and relaxed atmosphere are major drawcards. Watch a Broome sunset from atop a camel, purchase a beautiful pearl and during the full moon witness the natural phenomenon of the Staircase to the Moon. Kununurra boasts clear blue skies, rich red earth and rugged vistas. Explore Purnululu National Park, journey down dirt tracks and revel in spectacular waterfalls and gorges. Get a taste for the real Kimberley with a stay at one of the wilderness lodges dotted throughout the region.

SEE

- See the tracks of up to seven different dinosaur species between Gantheaume Point, at the southern end of Cable Beach, and James Price Point

DO

- For the ultimate Kimberley adventure, sleep overnight at Horizontal Falls onboard the luxurious Jetwave Pearl (see page 46)

EAT & DRINK

- Try a tasting paddle of uniquely Western Australian craft beers at Spinifex Brewing Co, Cable Beach

WHAT'S ON

Staircase to the Moon, Broome

3 – 5 April, 3 – 5 May, 1 – 3 June, 1 – 3 July, 27 – 29 September

Kimberley Cup, Broome

1 August

Shinju Matsuri Festival of the Pearl, Broome

22 August – 6 September

BROOME

REF.	APARTMENTS	PAGE
1	The Billi Resort Broome	50
2	Moonlight Bay Suites	49
3	Seashells Broome	50

REF.	HOTELS	PAGE
4	Discovery Parks – Broome	49
5	Pinctada Hotel Broome	50

THE KIMBERLEY

REF.	APARTMENTS	PAGE
6	Freshwater East Kimberley Apartments, Kununurra	51

REF.	HOTELS	PAGE
7	Berkeley River Lodge, East Kimberley	51
8	Best Western Cambridge Hotel Kununurra	51
6	Discovery Parks – Lake Kununurra	51
8	Discovery Resorts – Lake Argyle	52

REF.	STATIONS & CAMPS	PAGE
9	Bungle Bungle Savannah Lodge	52
10	El Questro – Emma Gorge	53
10	El Questro Homestead	53
10	El Questro – The Station	53

BROOME TOURS



DISCOVER BROOME TOUR

Explore Broome's must-see attractions, from Cable Beach and historic Chinatown to scenic Gantheaume Point. Dive into Broome's rich history, including its iconic pearling industry, World War II encounters, and vibrant local folklore. This award winning tour combines stunning landscapes, cultural tales, and local legends.

Includes:

- Iced cold towel, water and snack
- Expert local guide and commentary
- Return transfers from selected Broome accommodation

Operator: Broome and Around

Duration: 2 hours 30 minutes

Departs: Daily from Broome Visitors Centre at 9am

	Adult	Child 5-15 yrs
Morning Tour	\$130*	\$40*



TREASURES OF BROOME

Experience culture, connection and a live pearl harvest in Broome Town on this half day tour. Take in the local flavours, sunset views, and the charm of Chinatown and Town Beach and visit the Black Stump Gallery. Enjoy an authentic generous Vietnamese lunch and drink at Cygnet Bay Pearl Harvest in Chinatown.

Includes:

- Live pearl harvest and pearl meat tasting
- Lunch, drink and cocktail of choice
- Expert local guide and commentary
- Return transfers from selected Broome accommodation

Operator: Broome and Around

Duration: 4 hours

Departs: Wed, Fri from Broome Visitors Centre at 12:45pm

	Adult	Child 5-15 yrs
Half Day Tour	\$180*	\$75*



3 IN 1 ICONIC BROOME TOUR

Discover Broome's highlights on this half-day tour, visiting three of its most popular attractions. Visit the Broome Historical Museum to experience the town's rich past, from shipwrecks to early pearling days. Stop at Spinifex Brewery, Broome's newest award-winning brewery. Cap it off with the Malcolm Douglas Crocodile Park, experiencing crocodiles up close.

Includes:

- Admission to Broome Museum
- Admission to Malcolm Douglas Crocodile Park
- Beer tasting at Spinifex Brewery
- Expert local guide and commentary
- Return transfers from selected Broome accommodation

Operator: Broome and Around

Duration: 4 hours

Departs: Wed, Fri from Broome Visitors Centre at 12:45pm

	Adult	Child 5-15 yrs
Half Day Tour	\$160*	\$65*



BROOME TOWN TOUR WITH CABLE BEACH & SUNSET

Discover the best of Broome including Chinatown, Sun Pictures and Willie Creek Pearl Luggers. Enjoy a beer tasting at a local Broome brewery. Explore Gantheaume Point before continuing on to Gantheaume Beach for sunset, wine and nibbles. Enjoy a brief visit to picturesque Cable Beach before drop off at your hotel.

Includes:

- Pearl Luggers visit
- Light refreshments and nibbles at sunset
- Local Broome brewery tasting • Expert guide
- Return transfers from selected Broome accommodation

Operator: Australian Pinnacle Tours

Duration: 6 hours

Departs: Tue, Thu, Sun from Broome at 12:30pm (Apr – Oct)

	Adult	Child 4-12 yrs
Half Day Tour	\$109*	\$65*



WILLIE CREEK PEARL FARM

The multi-award-winning Willie Creek Pearl Farm tour gives a unique insight into the fascinating process of modern pearl farming, from shell to showroom. See the inner workings of an operating commercial pearl farm and discover exactly what makes the perfect pearl as you discover why the best pearls in the world are produced in Broome.

Includes:

- Pearl Farm tour with guide • Willie Creek boat cruise
- Pearl masterclass including a live pearl harvest
- Morning or afternoon tea • Souvenir guide
- Jewellery showroom visit
- Return transfers from Broome accommodation

Operator: Willie Creek Pearl Farm

Duration: 5 hours

Departs: Daily from Broome at 8:45am, 10:15am, 1pm

Harvest Your Own Pearl tour also available.

	Adult	Child 5-15 yrs
Half Day Tour	\$169*	\$85*



DAMPIER PENINSULA & ABORIGINAL COMMUNITIES

Travel over rugged terrain to Beagle Bay Aboriginal Community. Visit the famous pearl shell altar at Sacred Heart Church before heading to One Arm Point. Take part in a guided visit to the trochus hatchery and learn about the Bardi Jawis' strong connection to their culture and saltwater traditions. Enjoy lunch at historic Cygnet Bay Pearl Farm, followed by a tour of the farm.

Includes:

- Visit Beagle Bay Aboriginal Community
- Cygnet Bay Pearl Farm Tour • Lunch and afternoon tea
- Transport by air-conditioned coach
- Return transfers from selected Broome accommodation

Operator: Australian Pinnacle Tours

Duration: 12 hours 30 minutes

Departs: Mon, Wed, Fri from Broome at 7am

	Adult	Child 4-12 yrs
Full Day Tour	\$349*	\$234*



COCKTAILS & COASTLINES CRUISE

Immerse yourself in the history, culture and wildlife that Roebuck Bay has to offer. Stand in 120 million year old dinosaur footprints on a secluded beach while learning about Broome's prehistoric past. Take a guided tour on board "Brahminy Kite" and enjoy sparkling wine while cruising the creek inlets. This is followed by a five course tapas meal and cocktail at an exclusive beachside venue.

Includes:

- 3 hour cruise of Roebuck Bay
- Gourmet platters and a glass of sparkling wine
- Five course tapas meal with cocktail
- Informative commentary • Return transfers from Broome accommodation

Operator: Broome Adventure Cruises

Duration: 6 hours

Departs: Mon to Sat from Broome at 2pm
(start time will vary according to the tides)

Reef shoes must be worn on tour and are available for hire.

	Adult	Child 1-14 yrs
Day Tour	\$249*	\$154*



SCENIC & PREHISTORIC CRUISE

Enjoy a fully guided cruise and explore secluded bays and meander up the creek inlets. Learn about Broome's colourful history, the evolution of the coastline, and of course the science behind the perfectly preserved, 120 million-year-old dinosaur footprints that are fossilised in rock on a secluded beach. Sip sparkling wine and enjoy gourmet platters whilst cruising the creek inlets.

Includes:

- 3 hour cruise of Roebuck Bay
- Gourmet platters and a glass of sparkling wine
- Informative commentary
- Return transfers from selected Broome accommodation

Operator: Broome Adventure Cruises

Duration: 5 hours

Departs: Mon to Sat from Broome at 10am
(start time will vary according to the tides)

Reef shoes must be worn on tour and are available for hire.

	Adult	Child 1-14 yrs
Day Tour	\$196*	\$126*



BOAB & MYRTLE CHANDON HIGH TEA

An extraordinary high tea experience, offering a unique journey through the flavours and culture of the Kimberley region. Extending an unforgettable indulgence, set against the breathtaking backdrop of Roebuck Bay, a rare opportunity to connect with the land and its culinary heritage.

Includes:

- Welcome drink on arrival
- Tastings and signature sparkling wines
- Return transfers from Broome accommodation

Operator: Broome Adventure Cruises

Duration: 2 hours

Departs: Mon to Sat from Broome at 5:30pm

	Adult
Afternoon Tour	\$235*



BUNGLE BUNGLE ADVENTURER

Experience an unforgettable two hour scenic flight over the Kimberley's iconic sights, including the Bungle Bungle Range and Lake Argyle. Enjoy spectacular views aboard Aviair's comfortable air-conditioned, high-wing aircraft on this award-winning adventure departing from Kununurra.

Includes:

- 2 hour scenic flight
- Informative commentary
- Cold bottled water and sweets
- Return transfers from Kununurra accommodation

Operator: Aviair

Duration: 2 hours

Departs: Daily from Kununurra Airport at 6am and 9am, 2:30pm (Apr - Aug)

	Adult	Child 3-12 yrs
Scenic Flight	\$561* [^]	\$540* [^]

[^]Price based on minimum 2 adults.



BUNGLE BUNGLE & RED ROCK GORGES

View the hidden red rock gorges of the north-west tip of the Bungle Bungle Range, as well as Piccaninny Gorge from end to end, on this spectacular 30 minute scenic flight. Fly over the unique beehive-shaped formations, the hero of Purnululu National Park, recognised internationally for their natural beauty and one of only 16 Natural World Heritage listed areas in Australia.

Includes:

- Scenic helicopter flight
- In-flight commentary
- Tea and coffee prior to departure

Operator: HeliSpirit

Duration: 30 minutes

Departs: On demand from Bellburn Airstrip
(20 Apr - 4 Oct 26)

	Adult/Child
Scenic Flight	\$571* [^]

[^]Price based on minimum 2 adults.



CAPTURE THE COCKBURN RANGE & KING RIVER

Experience the colours of the Cockburn Range and the mesmerising tidal patterns of King River on this exciting helicopter adventure. Fly low over the Lower Ord River, then track toward Wyndham. Continue towards the Cockburn Range and depending on the time of day, be amazed at the vivid colours of the East Kimberley afternoon sun that wash over the rugged terrain. Follow the magnificent Range and view Emma Gorge and Dunham River before returning to Kununurra.

Includes:

- Scenic helicopter flight • In-flight commentary
- Return transfers from Kununurra accommodation

Operator: HeliSpirit

Duration: 90 minutes

Departs: On demand from HeliSpirit Terminal, Kununurra

	Adult/Child
Scenic Flight	\$1224* [^]

[^]Price based on minimum 2 adults.

BROOME & THE KIMBERLEY TOURS

HORIZONTAL FALLS HALF DAY TOUR EX BROOME

Experience the incredible Horizontal Falls and pristine beauty of the Kimberley with a flexible half-day tour. Choose between a morning or afternoon departure.

Enjoy low level flying over the amazing islands of the Buccaneer Archipelago and Cape Leveque before the seaplane lands safely in the calm waters of Talbot Bay. The tour continues with a powerboat ride through the Horizontal Waterfalls and a relaxed island cruise, shark show and swim in the marine viewing enclosure.

Includes:

- Round-trip scenic seaplane flight from Broome
- An exciting cruise through the Horizontal Falls on a power boat
- Cruise through the spectacular bays and untouched creek systems of Talbot Bay
- Swim or snorkel in a marine viewing enclosure and see a shark show with local Tawny Nurse sharks
- Cooked breakfast or lunch on board a floating dining pontoon
- Marine Park Fee
- Return coach transfers from Broome accommodation

Operator: Horizontal Falls Seaplane Adventures

Duration: 6 hours

Departs: Selected days from Broome at 6am and 12 noon (Mar – Nov)



Adult/Child

Morning Tour/
Afternoon Tour

\$1295*

Not suitable for children under 4 yrs.

HORIZONTAL FALLS & DAMPIER PENINSULA FULL DAY TOUR

The only Horizontal Falls tour where you soar in a seaplane, cruise in a power boat and trek across the Kimberley discovering its natural wonders. Fly over the amazing islands of the Buccaneer Archipelago, just one small part of your adventure learning about the Kimberley's rich Indigenous culture, land, and community at Beagle Bay and Australia's oldest pearl farm in Cygnet Bay.

Includes:

- One way seaplane flight to/from the Horizontal Falls
- An exciting cruise through the Horizontal Falls
- Cruise through the spectacular bays and untouched creek system of Talbot Bay
- Swim or snorkel in the marine viewing enclosure and see a shark show with local Tawny Nurse Sharks
- Beagle Bay Aboriginal Community and the famous Mother of Pearl Church
- Cygnet Bay Pearl Farm tour

Operator: Horizontal Falls Seaplane Adventures

Duration: 10 hours 30 minutes

Departs: Selected days from Broome at 5am for Fly/Drive, 6am Drive/Fly (Apr – Nov)

Adult/Child

Full Day Tour

\$1350*

Not suitable for children under 4 yrs.



Premium Cabin



Main dining area

HORIZONTAL FALLS LUXURY OVERNIGHT STAY

This 24-hour tour is your only chance to marvel at the changing directional tides of this sideways waterfall. Enjoy 24 hours of pure excitement with numerous powerboat rides, a guided fishing charter and a relaxing cruise through the crystal blue waters of Talbot Bay and the ancient rock formations of Cyclone Creek. Spend a night onboard the luxurious vessel, Jetwave Pearl which is an exclusive base for a maximum of 20 guests. Standard cabins are on upper or main deck and feature a double bed and private ensuite, while the premium cabins contain a queen size bed, private ensuite and balcony.

Cap off the day with the resident shark show and a cooling swim in the marine viewing enclosure. Savour welcome drinks and sunset appetisers on the rooftop lounge or spacious decks before dining on the catch of the day and quality local produce.

Includes:

- 1 night accommodation onboard Jetwave Pearl
- Seaplane flight from Derby
- Powerboat rides through the Horizontal Falls
- Talbot Bay cruise
- Swim or snorkel in the marine viewing enclosure
- 1 breakfast, 1 lunch, 1 dinner • Marine Park Fee
- Return transfers from Derby or Broome accommodation

Operator: Horizontal Falls Seaplane Adventures

Duration: 24 hours

Departs: Selected days from Derby at 9:15am, Broome at 6:30am (29 Apr – 29 Sep 26)

Adult Twin Share Adult Sole Use

Main Deck	\$2220*	\$3420*
Upper Deck	\$2220*	\$3420*
Premium	\$2455*	\$3675*

Not suitable for children under 4 yrs.

THE KIMBERLEY TOURS



KUNUNURRA SUNSET DINNER CRUISE

Enjoy an unforgettable afternoon cruise on Lake Kununurra onboard the MV Jabiru. Journey along Lily Creek and out into the open water of picturesque Lake Kununurra. Take in the views of Sleeping Buddha as you approach the Diversion Dam as the sun sets. Cruise to Packsaddle Lagoon, your dinner destination. Soak up the tranquility as you enjoy your Kimberley-inspired dinner.

Includes:

- Lake Kununurra cruise • Barbecue dinner
- Standard beer, wine and non-alcoholic drinks
- Informative commentary
- Return transfers from selected Kununurra accommodation

Operator: Kununurra Cruises

Duration: 3 hours

Departs: Daily from Kununurra at 3:15pm (May – Sep)

	Adult	Child 3-16 yrs
Dinner Cruise	\$170*	\$114*



ORD RIVER EXPERIENCE WITH RIVERSIDE LUNCH

Begin your adventure with a 55km boat cruise along the spectacular Ord River, seeing some incredible birdlife and wildlife along the way – and maybe even spotting a freshwater crocodile or two! Stop at a Riverside Camp for a sumptuous buffet lunch before arriving at the Ord Top Dam. Visit the historic Durack Homestead before returning by coach to Kununurra.

Includes:

- Ord River cruise
- Durack Homestead Museum visit
- Lunch
- Return transfers from Kununurra accommodation

Operator: Triple J Tours

Duration: 6 hours 30 minutes

Departs: Daily from Kununurra at 9am (May – Sep)

	Adult	Child 3-16 yrs
Day Tour	\$257*	\$198*



ORD RIVER DISCOVERER WITH SUNSET

Travel by coach 70 kilometres across Durack country to Lake Argyle. Stop at the historic Durack Homestead Museum before being amazed by the views of Lake Argyle and the Ord River from the Ord Top Dam wall. Board the boat for a scenic cruise. Experience extraordinary scenery in an eco-environment thriving with birds and wildlife. Afternoon tea and a famous East Kimberley sunset is the perfect finish to the day.

Includes:

- Ord River cruise • Durack Homestead Museum visit
- Afternoon tea • Cold drinks, water, tea and coffee
- Return transfers from Kununurra accommodation

Operator: Triple J Tours

Duration: 6 hours

Departs: Daily from Kununurra accommodation at 11:30am (Apr – Sep)

	Adult	Child 3-16 yrs
Day Tour	\$263*	\$198*



KIMBERLEY DURACK CRUISE

Embark on a three hour lunch cruise aboard The Kimberley Durack, surrounded by the stunning beauty of Lake Argyle. Encounter incredible wildlife as you explore the bays and inlets and swim in the crystal-clear waters off a remote island. Explore the Main Ord Dam site and Ord River Gorge then return to Discovery Resorts – Lake Argyle.

Includes:

- Boat cruise • Remote island swim stop
- Fresh grazing style lunch
- Complimentary beer, wine and soft drink onboard
- Informative commentary from an experienced skipper
- Return transfers from Discovery Resorts – Lake Argyle

Operator: Discovery Resorts – Lake Argyle

Duration: 3 hours

Departs: Daily from Discovery Resorts – Lake Argyle at 10am (May – Aug), Wed to Sun (Mar, Apr, Sep, Oct)

	Adult	Child 3-16 yrs
Lunch Cruise	\$163*	\$97*



INJIID MARLABU CALLS US

Experience ancient family rituals of healing; listen to stories passed down from generation to generation; hear about El Questro's history and ancestors and learn about Ngarinyin culture and language. This unique and authentic Cultural Immersion experience introduces guests to the distinctive cultural, spiritual, physical and economic relationship the Ngarinyin Aboriginal people share with the land and waters of the East Kimberley.

Includes:

- Local Aboriginal culture and history
- Cleansing ceremony

Operator: El Questro

Duration: 2 hours

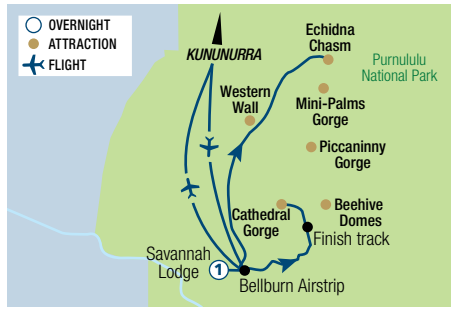
Departs: Mon to Fri from El Questro – The Station at 2:30pm (Apr – Aug)

Must be booked in conjunction with El Questro accommodation. Not suitable for children under 7 yrs.

	Adult	Child 7-16 yrs
Cultural Experience	\$150*	\$90*

*PRICES ARE A GUIDE ONLY, subject to change and availability and are in Australian Dollars. Prices are per person, unless otherwise specified and based on travel in low season. For full terms and conditions, refer to the Booking Conditions on the inside back cover of this brochure.

THE KIMBERLEY TOURING



BUNGLE BUNGLE OVERNIGHT EXPLORER 2 DAYS

Day 1: Kununurra to Purnululu National Park (LD)

Take a scenic flight from Kununurra to Purnululu National Park for a bird's eye view of the stunning Kimberley region. Fly over the mighty Ord River, Lake Argyle, the rugged Osmand Ranges and see the spectacular domes of the Bungle Bungle Range from above.

Land in Purnululu National Park and enjoy a 3km guided walk through the famous eroded towers and beehive-shaped domes with a picnic lunch in the stunning natural amphitheatre of Cathedral Gorge. Admire the astonishing geological formation of the gorge and

its amazing acoustics. Overnight at Bungle Bungle Savannah Lodge.

Day 2: Purnululu National Park to Kununurra (BL)

After breakfast, drive to the northern end of the national park and enjoy an extraordinary walk through Echidna Chasm and Northern Gorges. Your return scenic flight to Kununurra offers views of the Argyle Diamond Mine. Arrive back in Kununurra where your tour ends.

(B = breakfast, L = lunch, D = dinner)

From **\$2189*** per person twin share

2 DAYS | KUNUNURRA TO KUNUNURRA

OPERATOR: Bungle Bungle Guided Tours

TRAVEL TYPE: Escorted Air

DEPARTS: Daily (May – mid Sep)

HIGHLIGHTS

- Walk through the iconic domes to Cathedral Gorge
- View the Ord River, Osmand Ranges and the Bungle Bungle Range from the air

INCLUDES

- 1 night 3½ star accommodation
- Meals as specified
- Return scenic flights from Kununurra
- Cathedral Gorge and Domes guided walk
- Echidna Chasm and Northern Gorges guided tour
- Expert guide • National park fees
- Return transfers from selected Kununurra accommodation

Child prices also available. A high level of mobility is required for the Echidna Chasm walk.



ALLURING LAKE ARGYLE 3 DAYS

Day 1: Kununurra to Lake Argyle (D)

Be transferred on arrival at Kununurra Airport to Discovery Resorts – Lake Argyle. Settle into your room, explore and enjoy stunning vistas of the expansive lake. Late afternoon, head to the infinity pool lookout and marvel at a breathtaking Kimberley sunset. Enjoy a dinner showcasing local seasonal produce in the outdoor dining area. Spend the next two nights at Discovery Resorts – Lake Argyle.

Day 2: Lake Argyle (BLD)

Enjoy a continental breakfast at your leisure. Mid morning, embark on a cruise of Lake Argyle aboard

Kimberley Durack. Sail through the pristine lake waters and take in the captivating scenery. Delight in a fresh grazing-style lunch while onboard before taking a refreshing swim at a remote island stop. The afternoon is free to relax or take a dip in the stunning infinity pool, before a leisurely dinner.

Day 3: Lake Argyle (B)

Take in the serene ambience of the resort while enjoying breakfast. Check out of your accommodation and be transferred to Kununurra for your onward journey.

(B = breakfast, L = lunch, D = dinner)

From **\$817*** per person twin share

3 DAYS | KUNUNURRA TO KUNUNURRA

OPERATOR: Discovery Resorts

TRAVEL TYPE: Independent

DEPARTS: Mondays (May – Aug)

HIGHLIGHTS

- Enjoy stunning vistas of beautiful Lake Argyle
- Take in a Kimberley sunset from the infinity pool lookout
- Explore Lake Argyle by boat

INCLUDES

- 2 nights accommodation at Discovery Resorts – Lake Argyle in a Deluxe Studio Cabin
- Meals as specified
- Kimberley Durack Lunch Cruise on Lake Argyle
- Return transfers from Kununurra Airport or accommodation

Self drive option also available, Tue to Sat (Apr – Oct 26, Mar 27)



EL QUESTRO ESCAPE 4 DAYS

Day 1: Kununurra to El Questro – Emma Gorge (D) Your journey begins with a scheduled transfer along the scenic Gibb River Road to El Questro – Emma Gorge. On arrival, settle into your safari style, tented cabin. Tonight, enjoy a two-course dinner at Emma's Restaurant. Stay the next three nights at El Questro – Emma Gorge.

Day 2: El Questro – Emma Gorge (BLD) After a restful sleep, awake to birdsong and a hearty breakfast. Conquer the Emma Gorge hike, amid red cliffs and crystal-clear pools. Indulge in a leisurely lunch at Emma's, then join a guided sunset experience. This evening, enjoy a buffet dinner in the restaurant, before retreating to your tented cabin.

Day 3: El Questro – Emma Gorge (BLD) After breakfast, travel to El Questro Gorge and embark on the guided hike to the half-way pools. Unwind at Zebedee Springs, a cascading thermal pool situated among sky-high palm trees. Return for lunch at El Questro Station and then join the Chamberlain Gorge Cruise. Take in the scenery while enjoying a glass of sparkling wine. End the day with dinner at Emma Gorge.

Day 4: El Questro – Emma Gorge To Kununurra (B) Enjoy breakfast before your scheduled transfer to Kununurra.

(B = breakfast, L = lunch, D = dinner)

From **\$2131*** per person twin share

4 DAYS | KUNUNURRA TO KUNUNURRA

OPERATOR: Discovery Parks

TRAVEL TYPE: Independent

DEPARTS: Sun, Tue, Thu (May – Sep)

HIGHLIGHTS

- Hike Emma Gorge
- Take a rejuvenating dip in Zebedee Springs
- Admire the stunning scenery on a Chamberlain Gorge cruise

INCLUDES

- 3 nights accommodation at El Questro – Emma Gorge in a Tented Cabin with private en suite
- Meals as specified
- Emma Gorge Walk
- Sunset Experience at Emma Gorge
- El Questro Gorge and Zebedee Springs
- Chamberlain Gorge Cruise
- Return scheduled transfers from Kununurra Airport or accommodation

BROOME & THE KIMBERLEY TOURING & BROOME ACCOMMODATION



Bell Gorge

WILD KIMBERLEY OVERLAND 11 DAYS

Day 1: Broome via Tunnel Creek to Windjana Gorge (LD)
Travel by coach through the remote and beautiful Kimberley landscape. Stop for morning tea by the Fitzroy River and visit the Derby Boab Prison Tree before hitting the Gibb River Road. The afternoon is devoted to exploring Tunnel Creek. Tonight, camp under the Kimberley night sky. Overnight at Windjana Gorge.

Day 2: Windjana Gorge via Bell Gorge to Mt Barnett (BLD)
The Napier Range is over 350 million years old and home to the geological wonder of Windjana Gorge. Spend the morning searching for freshwater crocodiles and local birdlife. In the afternoon continue to Bell Gorge, which boasts cascading waterfalls and crystal clear pools formed over millions of years. Spend the next two nights at Mt Barnett Cattle Station.

Day 3: Galvans Gorge, Adcock Gorge & Mt Barnett Station (BLD)
Spend the day swimming in paradise. Further up the Gibb River Road, discover the cool waters of Galvans Gorge and Adcock Gorge. Amid the rugged beauty of Manning Falls, swim in deep clear pools and uncover local wildlife.

Days 4 & 5: Mt Barnett to El Questro Wilderness Park (Day 4 – BLD, Day 5 – BL)
Journey up the Gibb River Road to iconic El Questro Wilderness Park. Spend the next two nights at El Questro Wilderness Park.

Day 6: El Questro Wilderness Park to Lake Argyle (BD)
Leave the Gibb River Road and travel to Kununurra, where you will have some free time. In the afternoon, travel onto the shores of the expansive Lake Argyle, the heart of the Ord River Irrigation System. Stay two nights at Discovery Resorts – Lake Argyle.

Day 7: Lake Argyle (BL)
Today is free to enjoy Lake Argyle.

Days 8 & 9: Lake Argyle to Purnululu National Park (BLD)
After a leisurely morning, head south along the Great Northern Highway to Purnululu National Park. Discover the highlights of this extraordinary national park, the most famous being the Bungle Bungle Range. Spend the next two nights at the private Bungle Bungles Safari Camp.

Day 10: Purnululu National Park to Fitzroy Crossing (BLD)
Travel to Fitzroy Crossing today, stopping at the China Wall near Halls Creek. The afternoon is free to explore the area. Overnight at Fitzroy River Lodge.

Day 11: Fitzroy Crossing to Broome (BL)
Join the Darlgunya Cultural Walk where you will learn about the plants and wildlife on the Fitzroy River. Stop for lunch by the river before returning to Broome, where your tour concludes.

(B = breakfast, L = lunch, D = dinner)

From **\$4395*** per person twin share



11 DAYS | BROOME TO BROOME

OPERATOR: Intrepid Travel

TRAVEL TYPE: Small group camping

DEPARTS: Fri, Sun (May – Sep)

HIGHLIGHTS

- Visit Galvans Gorge, Adcock Gorge and Mt Barnett Station
- Marvel at the Bungle Bungle domes
- Admire the expansive beauty of Lake Argyle
- Explore El Questro Wilderness Park
- See the remarkable China Wall
- Discover Windjana Gorge and Bell Gorge

INCLUDES

- 10 nights camping accommodation
- Meals as specified • Expert guide
- Transport by air-conditioned 4WD vehicle
- National park fees • Return transfers from selected Broome accommodation

Camping Plus prices also available. A reasonable level of fitness is required.



DISCOVERY PARKS – BROOME



Deluxe Poolside Studio

91 Walcott Street, Broome

MAP PAGE 43

From **\$259***

- ❖ Enjoy uninterrupted views over Roebuck Bay
- ❖ Studio and 2 bedroom cabins with modern amenities
- ❖ Large outdoor swimming pool with sun lounges

Location: Situated on Roebuck Bay and just a short drive to the centre of Broome. Distances: Cable Beach 3km, Town centre 2.5km.

Property Features: Pool, Children's playground, Barbecue area, Kiosk, Guest laundry, Parking (free), 23 rooms.

Room Features: Air-conditioning, Balcony, Tea/coffee making facilities, Kitchen with microwave and dishwasher, Ironing facilities.

Max Capacity: Deluxe Poolside Studio/Deluxe Waterfront Studio – 2, Deluxe 2 Bedroom Waterfront Cabin – 4, Deluxe 2 Bedroom Canopy View Cabin /Deluxe 2 Bedroom Poolside Cabin – 6.



MOONLIGHT BAY SUITES



1 Bedroom Suite

51 Carnarvon Street, Broome

MAP PAGE 43

From **\$260***

- ❖ Spacious, fully self contained, newly refurbished apartments
- ❖ Large resort style pool with uninterrupted views over Roebuck Bay
- ❖ The perfect place to view the magnificent Staircase to the Moon

Location: On the edge of Roebuck Bay and a 5 minute walk to Chinatown. Distances: Cable Beach 4km, Town centre 1km.

Property Features: Pool, Barbecue area, Gym, Guest laundry, Parking (outdoor), Non smoking, 50 rooms.

Room Features: Air-conditioning, Fan, Kitchen with microwave, Cable TV, In-room movies (free), Ironing facilities, Hair dryer.

Max Capacity: 1 Bedroom Suite/1 Bedroom Pool View – 3, 2 Bedroom Suite/2 Bedroom Bayview – 5.



BROOME ACCOMMODATION

SEASHELLS BROOME



1 Bedroom

4-6 Challenger Drive, Cable Beach
MAP PAGE 43

From **\$270***

- ❖ Close to the white sands of Cable Beach
- ❖ Stylish, comfortable apartments and bungalows
- ❖ Freeform swimming pool surrounded by a sun lounge area

Location: Within walking distance to Cable Beach. Distances: Cable Beach 300m, Town centre 6km.

Property Features: Pools (2 – 1 children's), Barbecue area, Children's playground, Resort shop, Parking (free), 49 rooms.

Room Features: Air-conditioning, Fan, Balcony or verandah, Kitchen with convection microwave and dishwasher, Cable TV, In-room movies (free), Laundry, Ironing facilities, Hair dryer, Safe, All rooms non smoking.

Max Capacity: 1 Bedroom – 2, 2 Bedroom – 4, 3 Bedroom Bungalow – 6.



THE BILLI RESORT BROOME



Luxury Safari Queen Tent

95-97 Oryx Road, Cable Beach
MAP PAGE 43

From **\$259***

- ❖ A luxurious boutique sanctuary immersed in tropical tranquillity
- ❖ Premium self-contained villas and beautifully appointed air-conditioned safari tents
- ❖ Resort-style pool with expansive sun terrace and lush landscaped surrounds

Location: Perfectly positioned in the heart of the Cable Beach precinct. Distances: Cable Beach 2km, Town centre 2.8km.

Property Features: Pool, Bicycles (free), Electric bike hire, Guest laundry, Parking (free), Non smoking, 18 rooms.

Room Features: Air-conditioning, Barbecue, Tea/coffee making facilities, Kitchenette, Ironing facilities, Hair dryer, Safe.

Max Capacity: Safari Tents: Luxury Safari Queen Tent/Deluxe Safari Queen Tent – 2, Deluxe Safari King Tent – 4. Studio & Villas: Studio/1 Bedroom Villa – 2, 2 Bedroom Villa – 4.



PINCTADA HOTEL BROOME



Garden View

10 Murray Road, Cable Beach
MAP PAGE 43

From **\$295***

- ❖ Set in a peaceful bush setting just a short distance from Cable Beach
- ❖ Spacious and comfortable hotel rooms and studios
- ❖ Enjoy alfresco dining at the Pinctada Restaurant & Bar

Location: Just moments away from the iconic Cable Beach and a short walk from the town centre. Distances: Cable Beach 1km, Town centre 3.5km.

Property Features: Pool, Restaurant, Bar, Room service, Gym, Guest laundry, Parking (free), Non smoking, 71 rooms.

Room Features: Air-conditioning, Balcony, Tea/coffee making facilities, Cable TV, Ironing facilities, Hair dryer, Safe.

Max Capacity: Garden View/Pool View – 3, Courtyard Studio – 2.



BEST WESTERN CAMBRIDGE HOTEL KUNUNURRA



Standard

47 Victoria Highway, Kununurra
MAP PAGE 43

From **\$234***

- ❖ Newly renovated hotel rooms with modern amenities
- ❖ Onsite restaurant and bar offers breakfast, lunch and dinner
- ❖ Courtesy airport shuttle service

Location: Situated just minutes from the airport and a short walk to the town centre. Distances: Town centre 1km.

Property Features: Pool, Restaurant, Bar, Guest laundry, Parking (free), Non smoking, 49 rooms.

Room Features: Air-conditioning, Tea/coffee making facilities, Ironing facilities, Hair dryer, Safe.

Max Capacity: Standard/Deluxe King/Deluxe Twin – 2.



DISCOVERY PARKS – LAKE KUNUNURRA



Standard 1 Bedroom Cabin

Lakeview Drive, Kununurra
MAP PAGE 43

From **\$129***

- ❖ Enjoy tranquil views from the deck of your cabin
- ❖ Cabins are roomy and comfortable
- ❖ Keep an eye out for the local resident freshwater crocodile

Location: Set on 10 acres of bushland, on the edge of Lake Kununurra and a short distance to the town centre. Distances: Town centre 3km.

Property Features: Pool, Boat ramp, Barbecue, Children's playground, Guest Laundry, Parking (free), 25 rooms.

Room Features: Air-conditioning, Balcony, Limited cooking facilities, Tea/coffee making facilities, Flat screen TV, Ironing facilities, Hair dryer.

Max Capacity: Deluxe 1 Bedroom Waterfront Cabin/Superior 1 Bedroom Cabin – 2, Deluxe 2 Bedroom Spa Cabin/Standard 1 Bedroom Cabin/Superior 2 Bedroom Cabin – 4



FRESHWATER EAST KIMBERLEY APARTMENTS, KUNUNURRA



Studio

19 Victoria Highway, Kununurra
MAP PAGE 43

From **\$300***

- ❖ Set in lush tropical gardens overlooking Lily Creek Lagoon
- ❖ Families will love the freeform pool, barbecues, sundeck and sun lounges
- ❖ Modern, self-contained one, two and three bedroom apartments

Includes complimentary airport transfers – must be pre-booked*.

Location: A leisurely stroll from the Kununurra township. Distances: Town centre 1.2km.

Property Features: Pool, Barbecue area, Parking (free), 60 rooms.

Room Features: Air-conditioning, Fan, Patio, Limited cooking facilities (Studio), Kitchen (1, 2 and 3 Bedroom), Cable TV, DVD player, Ironing facilities, Hair dryer, All rooms non smoking.

Max Capacity: Studio/1 Bedroom/Deluxe 1 Bedroom – 2, 2 Bedroom – 4 adults/1 child, 3 Bedroom – 6 adults/1 child.

* Transfers operate 7am-6pm Apr to Sep and 8am-5pm Oct to Mar.



BERKELEY RIVER LODGE, EAST KIMBERLEY



Berkeley River, East Kimberley
MAP PAGE 43

From **\$3950*^**

- ❖ Luxury villas with views of the Kimberley coastline or Berkeley River
- ❖ All villas feature open-air bathrooms
- ❖ Activities include river cruise, 4WD excursions, fishing and guided walks

Includes all meals, alcoholic and non-alcoholic beverages, selected activities, return scheduled air transfers from Darwin.

Location: Set between the northern Kimberley coast and the Berkeley River.

Distances: Kununurra 190km, Darwin 400km.

Property Features: Free Wi-Fi (common areas), Pool, Spa, Sundeck, Restaurant, Bar, Laundry service, 19 rooms.

Room Features: Air-conditioning, Ceiling fans, Deck, Tea/coffee making facilities, Open-air bathroom, Hair dryer, All rooms non smoking.

Max Capacity: Kimberley Villa – 2.

^Minimum 5 night stays applies. Children 0-16 yrs – not catered for. The property is closed 1 Sep 26 – 30 Apr 27 (dates subject to change and subject to weather conditions).

KIMBERLEY REGION ACCOMMODATION

DISCOVERY RESORTS – LAKE ARGYLE



Standard Studio

525 Lake Argyle Road, Lake Argyle
MAP PAGE 43

From **\$162***

- ❖ Panoramic vistas over Lake Argyle and the ranges
- ❖ Infinity swimming pool offering spectacular views
- ❖ Lunch and Sunset cruise experiences available on Lake Argyle

Location: Nestled in the Kimberley region, near expansive Lake Argyle. Surrounded by rugged landscapes, the resort offers panoramic views of the lake. Distances: Kununurra 70km.

Property Features: Free Wi-Fi (common areas), Infinity swimming pool, Spa, Restaurant, Bar, Barbecue, Convenience store, Guest laundry, Parking (free), Kimberley Durack cruise touring, Airport transfers operate seasonally (extra charge), 46 rooms.

Room Features: Air-conditioning, Balcony/patio, Limited cooking facilities (Studios), Fully equipped kitchen (1, 2 and 4 Bedrooms).

Max Capacity: Deluxe 1 Bedroom Lakeview – 2, Standard Studio/Deluxe Studio – 3, Standard Studio/Standard 2 Bedroom/Deluxe 2 Bedroom Lakeview – 5, Deluxe 4 Bedroom Lakeview – 10.



BUNGLE BUNGLE SAVANNAH LODGE



Purnululu National Park
MAP PAGE 43

From **\$822***

- ❖ Rustic rooms have comfortable beds, hot showers and front deck
 - ❖ Environmentally friendly solar powered rooms
 - ❖ Families and couples will enjoy the star filled skies of the great outdoors
- Includes breakfast and dinner daily.**

Location: Set in the heart of the wilderness in the remarkable Purnululu National Park. Distances: Kununurra 315km, Halls Creek 153km.

Property Features: Pool, Dining areas (indoor, outdoor), Licensed bar, 26 rooms.

Room Features: Fan, Private en suite, Linen, Lighting, Power point.

Max Capacity: Ensuite Cabin – 2.

Park permits and vehicle fees apply and are not included in the price. Refer to page 7 for information on National Park fees and how to purchase passes. The property is closed 16 Sep 26 – 31 Mar 27.



Ensuite Cabin



* FROM PRICES ARE A GUIDE ONLY, subject to change and availability and are in Australian Dollars. Prices are per room per night for 2 people, unless otherwise specified and based on the lowest room category for travel in low season. For full terms and conditions, refer to the Booking Conditions on the inside back cover of this brochure.



Emma Gorge Waterfall

EL QUESTRO

El Questro is a truly unique holiday destination, situated in the rugged and unspoiled Kimberley region. With over 700,000 acres of land, extending for approximately 80 kilometres, much of which remains unexplored, it is one of the last true frontiers.

El Questro offers a range of accommodation options to suit all budgets and tastes - from the rustic charm of Riverview and Gardenview rooms at The Station, to the natural immersion of safari-style Tented Cabins at Emma Gorge and the luxurious exclusivity of the Homestead. Each option provides a unique experience, allowing guests to fully immerse themselves in the untamed beauty of this extraordinary destination.

Tours available (extra charge): Chamberlain Gorge Cruise, Bird Watching Tour, El Questro Full Day Tour, Sunset Tour, Emma Gorge Walk & Zebedee Springs.

EL QUESTRO – THE STATION



Station Tent

Via The Gibb River Road, East Kimberley
MAP PAGE 43

From **\$211***

- ❖ Located on the Pentecost River, The Station is the hub of activity at El Questro
 - ❖ The Steakhouse, Cantina and Swinging Arm Bar offer a great spot to eat
 - ❖ Families will love the open spaces, swimming hole and nightly entertainment
- Includes El Questro Visitor Permit.**

Location: In the heart of the park, on the banks of the Pentecost River. Distances: Kununurra 110km, Emma Gorge 28km.

Getting There: 2 hour 4WD transfer from Kununurra. **\$208*** per person one way.

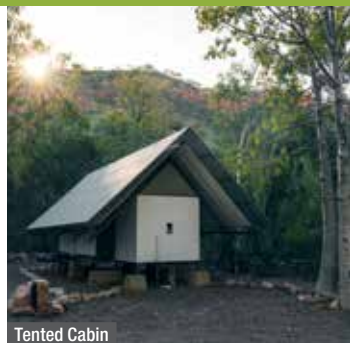
Property Features: Free Wi-Fi (common areas), Restaurant, Bar, Guest laundry, Retail shop, Fuel outlet, 33 rooms.

Room Features: Air-conditioning, Patio, Mini refrigerator, Tea/coffee making facilities, Ironing facilities, Hair dryer.

Max Capacity: Station Tent – 2, Gardenview/Riverview – 3, Gardenview Family – 6.

Property is closed 19 Oct 26 – 31 Mar 27.

EL QUESTRO – EMMA GORGE



Tented Cabin

Via The Gibb River Road, East Kimberley
MAP PAGE 43

From **\$492***

- ❖ Sleep under canvas with the soothing sounds of wildlife
- ❖ Emma Gorge Walk is only a short distance from your cabin
- ❖ Modern safari-style tented cabins with fans and outdoor dining area

Includes full breakfast daily and El Questro Visitor Permit.

Location: Situated within the Cockburn Ranges. Distances: Kununurra 80km.

Getting There: 90 minute scheduled 4WD transfer from Kununurra. **\$169*** per person one way.

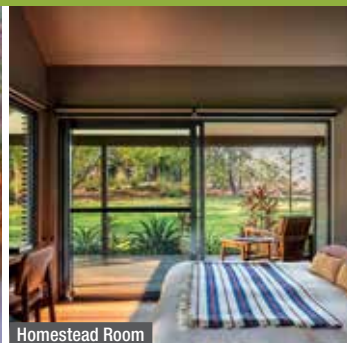
Property Features: Free Wi-Fi (common areas), Pool, Restaurant, Bar, Boutique, Guest laundry, 60 rooms.

Room Features: Fan, Private en suite, Tea/coffee making facilities.

Max Capacity: Tented Cabin – 3 or 4.

Property is closed 1 – 30 Apr, 21 Sep 26 – 31 Mar 27.

EL QUESTRO HOMESTEAD



Homestead Room

Via The Gibb River Road, East Kimberley
MAP PAGE 43

From **\$2434*^**

- ❖ Luxury homestead with suites overlooking the Chamberlain Gorge
- ❖ High-end dining, immersive experiences and genuine hospitality
- ❖ Tailored Kimberley experience with itineraries based on guest interests

Includes all meals and selected alcoholic beverages daily, mini bar stocked daily, selected touring and El Questro Visitor Permit.

Location: Nestled within the Kimberley's vast and ancient landscape and hidden amongst burnt-orange cliffs and lush, green lawns. Distances: Kununurra 115km, Emma Gorge 35km.

Getting There: 2 hour 4WD transfer from Kununurra. **\$226*** per person one way.

Property Features: Free Wi-Fi (common areas), Pool, Heli-pad, Gourmet long table dining, Private dining experiences, Self-service bar, Library, Communal lounge space, Boutique retail offering, 10 rooms.

Room Features: Air-conditioning, Fan, Verandah, Tea/coffee making facilities, Mini bar, Private en suite, Hair dryer, Free standing bath (excluding Homestead Room).

Max Capacity: Homestead/Gorge View/Cliff Side Retreat/Chamberlain Suite – 2.

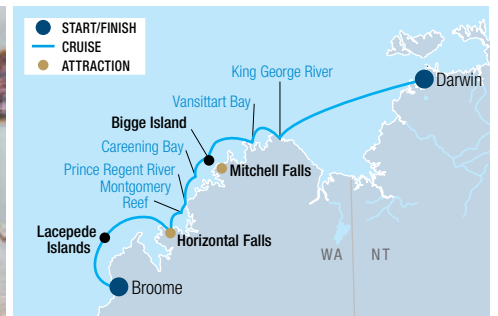
^ Minimum 3 night stay applies. Property does not cater to guests under 18 yrs.

Property is closed 19 Oct 26 – 31 Mar 27.

KIMBERLEY CRUISING



Coral Adventurer – Promenade Deck



THE KIMBERLEY EXPEDITION CRUISE – CORAL EXPEDITIONS

Explore Australia's Kimberley on an unforgettable small ship adventure with the experts. Learn from a knowledgeable expedition team who share their passion for this land. Coral Expeditions ships and Xplorer tenders are built for the Kimberley region. For over 35 years, they have been refining this classic Australian adventure.

VESSEL FEATURES:

- Open Bridge • Single seating dining
- Wrap-around promenade deck with panoramic views
- Gym and elevator (Coral Adventurer & Coral Geographer)
- Shallow draft to access remote destinations
- Maximum of 72 guests Coral Discoverer, 120 guests Coral Adventurer & Coral Geographer

CABIN FEATURES:

- Air-conditioning • Private en suite
- Daily servicing • Choice of junior or king beds

INCLUDES:

- Onboard accommodation • Wi-Fi access – standard
- All meals, chef-prepared on board
- Selected wines, selected beers and house spirits, juices, and soft drinks served with lunch and dinner
- 24-hour barista-style coffee and tea station
- All excursions with Expedition Team
- Use of Xplorer and Zodiacs • Tips and gratuities
- Daily lectures and briefings with Guest Lecturers
- Use of all onboard facilities including a reference library
- Captain's welcome and farewell events
- Expedition diary, along with a photo gallery documenting the highlights of your voyage
- All entrance fees to National Parks, ports, traditional owner fees and charges imposed by governing authorities • Post-cruise transfers to CBD hotel or airport

Available at an Extra Charge:

- Wi-Fi access – premium
- Laundry service • Souvenir purchases
- Optional helicopter flight over Mitchell Falls
- Alcoholic & non-alcoholic specialty beverages outside of lunch and dinner service

10 NIGHT ALL INCLUSIVE THE KIMBERLEY CRUISE – CORAL ADVENTURER, CORAL DISCOVERER & CORAL GEOGRAPHER

Discover the rugged beauty of Australia's Kimberley region on an unforgettable 10 night expedition cruise. Witness majestic waterfalls at their peak, marvel at the tidal wonders of Horizontal Falls and Montgomery Reef, and explore ancient rock art galleries.

These expertly guided adventures will immerse you in pristine, remote nature. Experience the thrill of a Kimberley shower beneath King George Falls, enjoy a scenic helicopter ride over Mitchell Plateau to Mitchell Falls (own expense) and revel in the serene beauty of King Cascade waterfalls.

Travel in comfort aboard Coral Expeditions' purpose-built expedition ships, designed to navigate this untamed wilderness. With unrivalled experience, remote comfort of the Xplorer tenders, up-close encounters with wildlife, and stunning landscapes, this voyage is the ultimate Australian adventure.

Day 1: Depart Darwin or Broome

Days 2-10: Expedition Highlights:

- King George River and Falls (Oomari Falls)
- Vansittart Bay (Banjal)
- Mitchell Falls, Winyalkan, & Swift Bay
- Prince Frederick Harbour and Bigge Island (Wuuyuru)
- Prince Regent River and Careening Bay (Wunbung-gu)

- Montgomery Reef (Yowjab)
 - Doubtful Bay
 - Horizontal Falls (Garaanngaddim) and Buccaneer Archipelago
 - The Lacepede Islands
- Day 11: Arrive Broome

This itinerary is an indication of the destinations and activities on offer. The itinerary is subject to change.

10 NIGHT CORAL ADVENTURER

From Broome:

2026: Apr 11, May 2, 23, Jun 13, Jul 4, 25, Aug 15
2027: Apr 24, May 15, Jun 5, 26, Jul 17, Aug 7, 28

From Darwin:

2026: Apr 1, 22, May 13, Jun 3, 24, Jul 15, Aug 5, 26
2027: Apr 14, May 5, 26, Jun 16, Jul 7, 28, Aug 18

Cruise operates in reverse.

10 NIGHT CORAL DISCOVERER

From Broome:

2026: Apr 19, May 9, 30, Jun 19, Jul 10, 30, Aug 20
2027: May 16, Jun 18, Jul 9, Aug 6, Sep 3

From Darwin:

2026: Apr 9, 29, May 20, Jun 9, 30, Jul 20, Aug 10
2027: Apr 24, May 27, Jun 29, Jul 20, Aug 17

Cruise operates in reverse.

	2026	2027
Coral Deck	\$13,400* [^]	\$13,900* [^]
Promenade Deck	\$16,300* [^]	\$16,900* [^]

	2026	2027
Main Deck A	\$13,900* [^]	\$13,900* [^]
Prom Deck A	\$16,900* [^]	\$16,900* [^]

[^]Children 12 to 18 yrs – adult prices apply. For children under 12 yrs prices on application. A fuel levy may apply. There may be changes made to daily schedule where necessary to maximise guest experience given the weather, local environment and safety considerations. Other cabin categories also available. Departure dates and prices are also available for Coral Geographer – ask your travel agent for details.



KIMBERLEY CRUISING – ECO ABROLHOS CRUISES

Eco Abrolhos Cruises are designed for those who seek adventure, discovery, and value. The expedition-style cruises offer an intimate, small-group experience, accommodating up to 32 guests in comfort.

Explore breathtaking Kimberley landscapes, ancient rock art, and pristine waterfalls, all while enjoying chef prepared meals in a relaxed atmosphere. Experienced guides will deliver a 13 night cruise departing from Broome or Wyndham/Kununurra that is sure to be a trip of a lifetime.

VESSEL FEATURES:

- Spacious top deck with 360° views
- Comfortable lounge and dining areas
- Licensed bar
- 17 privately ensuited cabins
- Fast, easy-access aluminium expedition tenders
- Maximum of 32 guests

CABIN FEATURES:

- Air-conditioning
- Private en suite
- Hair dryer & personal amenities

INCLUDES:

- Onboard accommodation
- All meals on board
- 24 hour tea, coffee and filtered water
- Daily excursions
- Fishing experience
- Laundry service
- Local transfers to/from ship

Available at an Extra Charge:

- Wi-Fi
- Alcoholic and non-alcoholic beverages
- Scenic helicopter flight
- Horizontal Falls Fast boat tour
- Compulsory Traditional Land Owner Visitor Pass



13 NIGHT BROOME TO WYNDHAM CRUISE

Explore the isolated coastline of the Kimberley region with its majestic gorges and rock pools on this 13 night cruise. Discover remarkable Montgomery Reef and the amazing natural phenomenon of the Horizontal Falls of Talbot Bay.

- Day 1: Depart Broome
- Day 2: Yampi Sound – Horizontal Falls, Talbot Bay
- Day 3: Collier Bay – Montgomery Reef, Doubtful Bay
- Day 4: Camden Harbour – St George Basin
- Day 5: St George Basin – Prince Regent River
- Day 6: Prince Regent River – Port Nelson
- Day 7: Naturalist Island – Hunter River – Prudhoe Island
- Day 8: Prudhoe Island
- Day 9: Swift Bay – Port Warrender – Vansittart Bay
- Day 10: Vansittart Bay
- Day 11: Vansittart Bay – Broome Napier Bay – Koolama Bay
- Day 12: Koolama Bay – King George River
- Day 13: Berkeley River – Cambridge Gulf
- Day 14: Arrive Wyndham and transfer to Kununurra

From Broome at 7am:

2026: May 18, Jun 17, Jul 17, Aug 16
2027: May 9, Jun 8, Jul 8, Aug 7

From Wyndham at 7am:

2026: Jun 2, Jul 2, Aug 1, 31
2027: May 24, Jun 23, Jul 23, Aug 22

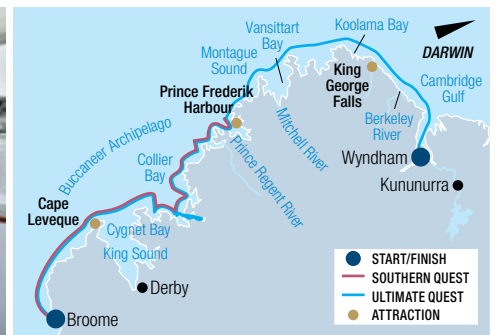
Cruise operates in reverse.

	2026	2027
Single Bunk Twin Share – Lower Deck	\$13,999* ^{^A}	\$14,699* ^{^A}
Single Bunk Solo – Lower Deck	\$16,750* ^{^A}	\$17,590* ^{^A}
Double Cabin – Main Deck	\$17,250* ^{^A}	\$18,115* ^{^A}
King Deluxe – Main Deck	\$18,750* ^{^A}	\$19,700* ^{^A}
King Deluxe – Bridge Deck	\$18,750* ^{^A}	\$19,700* ^{^A}

^{^A} \$350 Traditional Land Owners Visitor Pass per person is payable at the time of booking. Fees are subject to change without notice. Children: 0 to 14 yrs – not catered for. Due to unforeseen circumstances such as weather and tides, itinerary may be subject to change without notice. Sole use prices also available.

*FROM PRICES ARE A GUIDE ONLY, subject to change and availability and are in Australian Dollars. Prices are per person twin share, unless otherwise specified. For full terms and conditions, refer to the Booking Conditions on the inside back cover of this brochure.

KIMBERLEY CRUISING



KIMBERLEY CRUISING – KIMBERLEY QUEST

Kimberley Quest II is a 24 metre expedition vessel custom built for the Kimberley region, allowing easy access to discover remote locations. With a choice of three cabin types, enjoy the pristine Kimberley wilderness in comfort and style. Carrying three excursion tenders, a shaded jetboat and helicopter on most cruises, days are filled with a myriad of activities. See vast tidal creeks, rugged gorges, massive waterfalls and pristine beaches. Swim in freshwater pools, explore historical sites and see ancient rock art galleries. Experienced guides are always on hand to share their extensive knowledge and bring your adventure to life.

VESSEL FEATURES:

- Helipad • Spa
- Spacious sundeck
- Indoor alfresco area
- Comprehensive library • Cable TV
- Maximum of 18 guests

CABIN FEATURES:

- Air-conditioning • Private en suite
- Refrigerator • Viewing window
- 240 volt power • Daily servicing

INCLUDES:

- Onboard accommodation • Wi-Fi
- All meals on board
- 24 hour tea and coffee station
- Daily excursions
- Experienced guides
- Scenic helicopter flight over the Mitchell Falls and a light aircraft transfer to/from Broome (7 Night Southern Quest)
- Return transfers from accommodation

Available at an Extra Charge:

- Alcoholic beverages
- Scenic helicopter flights

7 NIGHT SOUTHERN QUEST – KIMBERLEY QUEST II

View many of the Kimberley's icons in the stunning southern region. Explore a land of extraordinary contrast and colour, rich in history, ancient Aboriginal rock art and breathtaking scenery. Enjoy a thrilling scenic helicopter flight over the Mitchell Falls.

- Day 1: Depart Broome, Cape Leveque
- Day 2: Buccaneer Archipelago
- Day 3: Dugong Bay, Talbot Bay, Horizontal Falls
- Day 4: Collier Bay, Montgomery Reef, Red Cone Creek
- Day 5: Kuri Bay, Camden Harbour
- Day 6: Prince Regent River, Kings Cascade
- Day 7: Careening Bay, Roe River
- Day 8: Hunter River, flight to Broome

From Broome (Cruise/Fly):

2026: May 26#, Jun 2, 9#, 16, 23#, 30, Jul 7#, Aug 4, 11#, 18, 25#, Sep 1, 8#

2027: Jun 15, 22#, 29, Jul 6#, 13, 20#, Aug 17, 24#, 31, Sep 7#

Reverse itinerary (Fly/Cruise).

	2026	2027
Double Cabin	\$14,990* ^{^A}	\$15,140* ^{^A}
Superior Cabin	\$16,990* ^{^A}	\$17,140* ^{^A}
Flybridge Cabin	\$18,490* ^{^A}	\$18,640* ^{^A}

^{^A} A \$120 Daminangari Visitors Pass and a \$56.65 Unguu Gural Transit Visitors Pass per person is payable at the time of booking. ⁺A \$120 Daminangari Visitors Pass and a \$166 Unguu Coast Visitors Pass per person is payable at the time of booking. Fees are subject to change without notice. Due to unforeseen circumstances such as weather and tides, itineraries may be subject to change without notice. 3 Night Taste of the Kimberley, 7 Night Northern Quest, 9 Night Adventure Quest, 10 Night Exploration Quest, 20 Night Beyond Adventure cruises and Fishing Expedition also available. Ask your travel agent for dates, prices and cabin types.

13 NIGHT ULTIMATE QUEST – KIMBERLEY QUEST II

This is the ultimate wilderness cruise along the whole Kimberley coast. Witness amazing Kimberley icons such as the King George Falls, Berkeley River, Montgomery Reef and the Horizontal Falls.

- Day 1: Broome, Cape Leveque
- Day 2 & 3: Buccaneer Archipelago, Dugong Bay, Talbot Bay, Collier Bay, Montgomery Reef, Red Cone Creek
- Day 4: Doubtful Bay, Sale River
- Day 5: Langii, Kuri Bay, Camden Harbour
- Day 6: Prince Regent River, King Cascade, Cathedral Falls
- Day 7: Careening Bay, Bigge Island
- Day 8: Mitchell River, Surveyors Creek
- Day 9 & 10: Vansittart Bay, WWII DC3 Crash Site, Drysdale River
- Day 11 & 12: Glycosmis Falls, Pangali Cove, Koolama Bay, King George River
- Day 13: Berkeley River, Cambridge Gulf
- Day 14: Wyndham Port, Kununurra

From Broome:

2026: Apr 21

2027: Mar 23, May 18

From Wyndham:

2026: Apr 7

2027: Mar 9, May 4, Jun 1

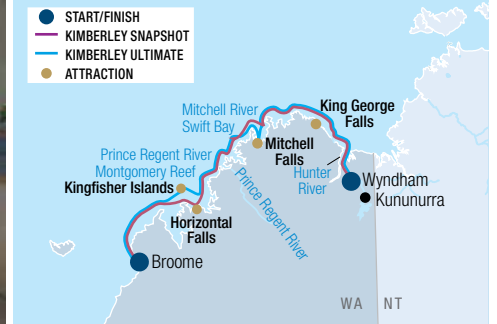
	2026	2027
Double Cabin	\$22,790* ⁺⁺	\$22,940* ⁺⁺
Superior Cabin	\$25,990* ⁺⁺	\$26,140* ⁺⁺
Flybridge Cabin	\$27,490* ⁺⁺	\$27,640* ⁺⁺



True North II



True North – Explorer Class



KIMBERLEY CRUISING – TRUE NORTH ADVENTURE CRUISES

True North & True North II are purpose-built to access wilderness and to provide opportunity to truly experience the featured destination. Daily activities can include diving, fishing, picnics, natural history and, scenic flights in the ship's helicopter.

The True North features the ultimate in comfort and style including a panoramic dining saloon, a dedicated ship's lounge and an observation lounge. True North II features a more intimate experience with a combined saloon/lounge.

Choose True North or True North II – now there's an adventure for everyone!

VESSEL FEATURES:

- Internet facilities
- Sundeck • Alfresco bar
- Dining room and/or lounge
- Adventure boats • Helicopter
- Maximum of 36 guests True North and 20 guests True North II

CABIN FEATURES:

- Ensuite or private facilities
- Air-conditioning • Satellite phone

INCLUDES:

- Onboard accommodation
- All meals, non-alcoholic beverages, house wine and beer at lunch and dinner service on board
- Complimentary alcoholic beverages served at select special group events
- Daily activities in the adventure boats
- Laundry services
- Satellite Wi-Fi • Port charges
- Local transfers to/from ship

Available at an Extra Charge:

- Alcoholic beverages
- Merchandise • Scenic flights

7 NIGHT KIMBERLEY SNAPSHOT – TRUE NORTH

On this expedition, you'll experience King George Falls, the Hunter River, the Prince Regent River, Montgomery Reef and the Buccaneer Archipelago, immersing yourself in the awe-inspiring beauty of the remote Kimberley.

- Day 1: Depart Broome
- Day 2: Cruise past Cockatoo and Koolan Islands, Horizontal Falls, Doubtful Bay
- Day 3: Sale River, Montgomery Reef
- Day 4: Prince Regent River, King Cascades
- Day 5: Hunter River, Jackson Falls, Vansittart Bay
- Day 6: Bradshaw Rock Art, Eagle Falls, Koolama Bay
- Day 7: King George Falls, Tranquil Bay
- Day 8: Arrive Wyndham and transfer to Kununurra

From Broome at 5pm:

2026: May 30, Jun 20, Jul 11, Aug 1, 22
2027: May 1, 22, Jun 12, Jul 3, 24

	2026	2027
Ocean Class Cabin	\$20,595* ^{^A}	\$20,595* ^{^A}
Ocean Premium Cabin	\$23,995* ^{^A}	\$23,995* ^{^A}
River Class Stateroom	\$26,595* ^{^A}	\$26,595* ^{^A}
Explorer Class Stateroom	\$28,995* ^{^A}	\$28,995* ^{^A}

^{^A} A \$266 Visitor Pass Fee per adult will be added to your ship account upon boarding. This fee is subject to change without notice. Due to prevailing conditions and local arrangements, itineraries are subject to change without notice. Child prices on application. Cruises to other destinations on True North and True North II are also available – ask your travel agent for details and prices.

13 NIGHT KIMBERLEY ULTIMATE – TRUE NORTH II

Explore the Kimberley with ample time at iconic locations. Experience the might of the King George Falls, the Hunter River, the Prince Regent River, Montgomery Reef and the Buccaneer Archipelago.

- Day 1: Depart Wyndham
- Day 2: King George River and Falls
- Day 3: The Drysdale River
- Day 4: Eagle Falls, Bradshaw Rock Art
- Day 5: Surveyors Creek, Mitchell Falls
- Days 6 & 7: Swift Bay, The Roe River
- Day 8: Hunter River, Jackson Falls
- Day 9: Prince Regent River, Kings Cascades
- Day 10: Camp Creek
- Day 11: Montgomery Reef, Ruby Falls
- Day 12: Kingfisher Islands
- Day 13: Buccaneer Archipelago
- Day 14: Arrive Broome

From Broome at 4:30pm:

2026: Apr 18, May 2⁺
2027: May 8, 22⁺, Jun 16⁺

⁺ Cruise operates in reverse. Kimberley Ultimate is also available on True North.

	2026	2027
Ocean Class Bunk Cabin	\$22,995* ^{^A}	\$23,995* ^{^A}
River Class Cabin	\$27,995* ^{^A}	\$28,995* ^{^A}
River Premium Cabin	\$29,995* ^{^A}	\$31,595* ^{^A}
Explorer Class Stateroom	\$31,995* ^{^A}	\$33,595* ^{^A}

ACCOMMODATION INDEX

PERTH		ROTTNEST ISLAND		Nesuto Geraldton Apartment Hotel.....38	
Airport Apartments by Vetroblu.....	21	Discovery Resorts – Rottneest Island.....	30	Potshot Hotel Resort, Exmouth.....	40
Baileys Parkside Motel by Vetroblu.....	21	MARGARET RIVER & THE SOUTH WEST		RAC Exmouth Cape Holiday Park.....	40
Comfort Inn & Suites Goodearth Perth.....	22	Abbey Beach Resort, Busselton.....	32	RAC Monkey Mia Dolphin Resort.....	39
COMO The Treasury.....	24	Ampersand Estates & Rainfall Distillery.....	34	Sal Salis Ningaloo Reef.....	39
Crown Metropol Perth.....	25	Aravina Escapes, Yallingup.....	34	THE PILBARA & SURROUNDS	
Crown Promenade Perth.....	23	Cape Lodge, Yallingup.....	33	Karijini Eco Retreat.....	41
Crown Towers Perth.....	24	Discovery Parks – Busselton.....	32	Mackerel Islands.....	42
Crowne Plaza Perth.....	23	Heyscape Denmark.....	35	Onslow Beach Resort.....	42
Duxton Hotel Perth.....	25	Hospitality Esperance, SureStay Collection by Best Western.....	35	BROOME & THE KIMBERLEY	
Holiday Inn Perth City Centre.....	23	Margarets Beach Resort, Gnarabup Beach.....	34	Berkeley River Lodge, East Kimberley.....	51
InterContinental Perth City Centre.....	25	Margarets In Town Apartments, Margaret River.....	34	Best Western Cambridge Hotel Kununurra.....	51
Metro Hotel Perth.....	22	RAC Karri Valley Resort, Pemberton.....	35	The Billi Resort Broome.....	50
Metro Hotel Perth City.....	22	Seashells Yallingup.....	33	Bungle Bungle Savannah Lodge.....	52
Pan Pacific Perth.....	25	Sleepwell Motel Albany.....	35	Discovery Parks – Broome.....	49
Quality Hotel Ambassador Perth.....	22	Smiths Beach Resort, Yallingup.....	33	Discovery Parks – Lake Kununurra.....	51
PERTH SURROUNDS		CORAL COAST		Discovery Resorts – Lake Argyle.....	52
Esplanade Hotel Fremantle – by Rydges.....	26	Discovery Parks – Carnarvon.....	38	El Questro – Emma Gorge.....	53
Garde Hotel & Warders Cottages.....	26	Hospitality Carnarvon, SureStay Collection by Best Western.....	39	El Questro Homestead.....	53
Hougoumont Hotel, Fremantle.....	26	Hospitality Geraldton, SureStay Collection by Best Western.....	38	El Questro – The Station.....	53
Quality Resort Sorrento Beach.....	27	Kalbarri Edge Resort.....	38	Freshwater East Kimberley Apartments, Kununurra.....	51
Ramada Vetroblu Scarborough Beach.....	27	Mantarays Ningaloo Beach Resort, Exmouth.....	40	Moonlight Bay Suites.....	49
Rendezvous Hotel Perth Scarborough.....	27				
Seashells Mandurah.....	27				
Seashells Scarborough.....	26				



Coalseam Conservation Park

Courtesy of Tourism Western Australia

Please read these Booking Conditions carefully as they apply to all bookings with Viva Holidays.

HOW TO BOOK

Contact your ATIA travel agent and request a reservation. All verbal quotes provided are an estimate only and subject to change until confirmed in writing.

PRICES & CONDITIONS

This brochure was produced on 22 January 2026. Unless otherwise stated, prices are in Australian dollars and include GST where applicable. All prices are subject to availability, subject to change and can be withdrawn or varied without notice. Prices are to be used as a guide only. Accommodation prices are based on the lowest room category in low season. All other prices are based on travel in low season. Some prices are based on dynamic rates, which means the price may be higher or lower than the advertised price if the price has been varied by the supplier after this brochure was printed. Price changes may occur by reason of matters outside our control which increase the cost of the Product or Service. Such factors include (without limitation) adverse currency fluctuations, fuel surcharges, or increase to taxes. Surcharges and minimum stays may apply due to demand, Christmas and New Year's Eve, school and public holidays, special events and other circumstances. All prices are the lowest available prices at the time of print and are a guide only. Please check all prices, availability, fees, conditions and information with your travel agent before booking.

If we must change any part of your booking for reasons beyond our control, for example, an Accommodation Supplier overbooks accommodation, or if there is an increase in taxes or Supplier charges, we will notify you. If any such changes result in your holiday costing more or otherwise being materially different from that originally booked, you may cancel the booking and we will refund any monies already paid less any charges levied by Suppliers.

PRICES DO NOT INCLUDE

Anything not specifically indicated as being an inclusion.

OMISSIONS & ERRORS

While every effort is made to ensure the accuracy and currency of the information in the brochures, errors or omissions may occur. All errors and omissions identified post the date of publication are notified to our retail partners to advise you. Please check with your agent for all up-to-date corrections, including prices and inclusions.

DEPOSITS & FINAL PAYMENTS

Deposit

A minimum non-refundable deposit of \$55 per person is payable within 7 days of confirmation of your booking. You will be notified at the time of booking if any additional deposit is required. All deposits are non-refundable for changes of mind or cancellations by you (subject to your rights under the Australian Consumer Law).

Final Payment

Final payment of your holiday cost is required no later than 30 days prior to departure or by sale end date or by the payment deadline specified in individual package conditions, whichever is earlier. Some services may require full payment at the time of booking. For bookings made less than 31 days prior to travel, full payment of holiday cost is required at the time your booking is confirmed.

Please ensure payments are made by the due dates. If this does not happen, our system will automatically cancel the booking without notice or liability to you.

Only upon payment of the full cost of your holiday do you have a final booking with the Supplier of the relevant good and/or service. In arranging your booking, Viva Holidays is acting as the agent of the Supplier of the relevant Product and at no time do you have a contract with Viva Holidays.

CREDIT & DEBIT CARD SURCHARGES

A fee will apply for payments made by debit and credit cards. Fees may vary depending on card type. Please check this fee with us or your travel agent when booking.

FEES

Amendment Fees

If you wish to change your booking prior to departure, an amendment fee of \$30 will be charged if the overall value of the booking remains the same or decreases, in addition to any fees imposed by the Supplier of each service booked.

Late Booking Fees

A fee of \$30 will be charged for all bookings made less than 7 days prior to travel.

All fees can be varied without notice.

CANCELLATIONS & REFUNDS

Prior to Final Payment

Your deposit is forfeited.

After Final Payment

There will be no refund of your deposit, in addition to any fees imposed by the Supplier, which may be up to 100% of monies paid.

After Travel

There will be no refund if you cancel your booking once travel has commenced. There will be no refund for unused services, except for OPEN DATED services where the service was not booked with the Supplier. Requests for refunds received more than 6 months after departure date will not be accepted.

Should a refund after departure be approved, a \$110 refund processing fee will apply.

RESPONSIBILITY

Viva Holidays acts as an agent for the Suppliers (transport, tour, event or accommodation providers) who provide the various goods and/or services (Products). All bookings are subject to the terms and conditions and limitations of liability imposed by each Supplier. It is therefore important for you to obtain and read the applicable Supplier's terms and conditions as they may limit or exclude their liability to you.

In producing this brochure, we have used information provided by Suppliers. Irrespective of any measures taken by us to ensure the information contained in this brochure is accurate at the time of printing, Viva Holidays disclaims and will be exempt from liability in respect of anything misleading, false, incomplete or inaccurate and any errors, misdescription and all associated disappointment, loss, expense, damage, inconvenience, delay, death, shock, illness or injury, however caused.

Viva Holidays does not control the manner in which Products featured within this brochure are provided. Viva Holidays disclaims and will be exempt from liability for anything to do with the supply of such Products. This includes liability (whether as a matter of contract, tort, statute, restitution, or otherwise) for any direct, indirect or consequential loss, liability, claim, cost, expense, proceeding, demand, penalty, disappointment, death, injury, illness, shock, inconvenience or delay. This limitation of liability also applies irrespective of the cause, including negligence of us or a Supplier, withdrawal, cancellation or failure to provide a Product, delay, any variation in the Product, the provision of substitute Products or a change in the Supplier. Without limitation, Viva Holidays will not be responsible if the Product is not available due to inclement weather conditions or other acts of God, civil disturbances, fire, floods, acts of Government or any other authorities, accident to or failure of machinery or equipment or industrial action.

MAPS & PHOTOGRAPHS

The maps in this brochure are intended as a guide only and are not to scale. They do not necessarily reflect actual routings or accommodation or attraction locations. Accommodation room photographs are representative only and actual rooms occupied may vary in decor and inclusions from those shown.

Some images used in this brochure are supplied courtesy of tourist bureaus, hotels, tour operators, Tourism Australia, Tourism Western Australia, @Aeroture, @Cjmaddock, Abby Murray, Adam Gibson, Amelia Pacetta, Base Imagery, Ben Nguyen, Bobby Bens, Carla Atley, CJ Maddock, D-Max Photography, David Lip Photography, Frances Andrijich, George Apostolidis, Gerard Vivian Nezar, Jack Lovel, Joel Barbitta, John Montesi, Jon Davison, Magdalena Aleksandrowicz, Martin Morrell, Mauro Risch Photography, Miles Noel Studio, Natasha Seymour, Oliver Oldroyd, Osprey Creative, Robert Frith, Sabine Albers, Sascha Unger, Shot By Thom, Skyla Sage Photography, Stacey Goodey Photography & Films, Taryn Yeates, Tim Campbell, Timothy M Campbell and Two Palms Australia.

PRODUCT DESCRIPTIONS

Product descriptions and accommodation ratings featured in this brochure are provided by the individual Suppliers. Facilities, features or ratings are subject to change at any time. Tours may not operate on certain dates and durations and departure times are approximate only. You should check at the time of booking for any changes to published information of which we may be aware.

BONDS

Bonds or credit card imprints are required by most Suppliers at the time of check-in to cover incidentals and fees not included in your holiday cost.

TRANSFERS & TOURS

Some Accommodation Suppliers provide courtesy transfers to/from the airport. It is essential that these transfers are pre-booked. Some Tour Suppliers provide complimentary pick up and return to your holiday accommodation and require a minimum number of passengers to operate. If minimum numbers are not achieved tours may be cancelled at short notice. Additionally, some Suppliers reserve the right to cancel departures for other reasons, including bad weather. Some tours and itineraries may also vary and attractions may be substituted due to seasonal conditions. Viva Holidays will not be held liable for a service variation, cancellation, delay or withdrawal, or a Supplier's failure to notify you. A full refund applies for the cancelled tour.

TRAVEL INSURANCE

We strongly recommend you take out appropriate travel insurance to cover your travel arrangements.

PRIVACY

Viva Holidays collects information about you (including health information where necessary) to provide products and services to you, process your travel arrangements, facilitate your participation in loyalty programs and conduct marketing activities and market research. If the information is not provided, Viva Holidays may not be able to provide the Service requested. Viva Holidays may disclose your personal information to its related companies, carriers, travel service providers, organisations which provide services to Viva Holidays (more details are available in our Privacy Statement on our website vivaholidays.com.au) and various law enforcement agencies, airports and governments around the world for security, customs and immigration purposes. You may gain access to the information Viva Holidays holds about you by contacting our Privacy Officer in writing at 179 Normanby Road, South Melbourne VIC 3205 Australia or on privacyofficer@vivaholidays.com.au.

MONIES NOT HELD ON TRUST

All monies paid by you to us will be the property of Viva Holidays and will be a debt due and payable to the relevant Supplier (contingent on availing) once the services to which the money relates have been availed, or the relevant booking is cancelled (subject to cancellation fees). You agree and acknowledge that such monies will not be held by Viva Holidays on trust for or on behalf of you, and we may hold such monies in any account as we see fit, including with our own and/or other customer monies.

GOVERNING LAW

These conditions are governed by the laws of Victoria, Australia and any action arising under them or in any way connected with a booking may be brought only in a court in Victoria, Australia, subject to any law which is expressly inconsistent with this.

You acknowledge that you are 18 years of age or older and that you understand and agree with the above terms and conditions and our Privacy Policy. Please read our full booking terms and conditions at vivaholidays.com.au/policies/booking-conditions.



Cottesloe Beach, Sunset Coast

Courtesy of Tourism Western Australia

To book, see your preferred Travel Agent or vivaholidays.com.au for information

YOUR VIVA HOLIDAYS PREFERRED AGENT:

VIVA HOLIDAYS

Reservations: 1300 872 835 | online.enquiries@vivaholidays.com.au
Travel Agents Reservations: 13 27 87 | reservations@vivaholidays.com.au

