

VIVA
HOLIDAYS

THAILAND



2026-2027



EXPERIENCE THAILAND WITH VIVA HOLIDAYS

Discover beautiful beaches surrounded by azure waters. Tempt your tastebuds with authentic, aromatic Thai food. Shop in the many colourful markets and admire the breathtaking Buddhist temples. The 'land of smiles' is renowned for its friendly people and unique culture.

With over 50 years of experience in the travel business, trust us to make your dream Thailand holiday a reality.

CHOOSE VIVA HOLIDAYS AND LIVE A LIFE OF TRAVEL.





CONTENTS

Planning Ahead	7
Experiences You'll Love	8
Bangkok	10
Phuket	16
Elephant Hills	17
Patong Beach	18
Karon & Kata Beaches	24
Kamala & Bang Tao Beaches	30
Phuket Beach Hideaways	32
Khao Lak	33
Koh Phi Phi & Koh Yao	36
Krabi	38
Koh Samui & Koh Phangan	39
Chiang Mai	45
Pattaya	48
Hua Hin	49
Accommodation Index	50
Booking Conditions	51

WHY CHOOSE VIVA HOLIDAYS

Viva Holidays has been creating exceptional worldwide holiday experiences for over 50 years. Your arrangements will be managed by our local travel specialists who are experts in designing holidays to perfectly suit your travel needs. You'll always be in experienced hands when you book with Viva Holidays.

MORE CHOICE

Our exclusive product range caters for every type of holiday. Accommodation, car hire, theme parks, attractions, day and extended tours, rail and cruises – we've got it covered.

With incredible deals available throughout the year, make sure you ask your travel agent for our best offers.

EXCEPTIONAL SERVICE

Exceptional customer service is behind everything we do. That's why we were recognised as the Most Outstanding Wholesaler – Product/Service in 2023 and 2024 at the National Travel Industry Awards. Our Australian-based team are passionate about travel and providing outstanding service. Let us do the research, planning and booking to ensure your holiday is one you'll always remember.



PEACE OF MIND

Viva Holidays is a proud member of ATIA Accreditation, the Australian Travel Industry Association's accreditation scheme that sets the benchmark of quality for the travel industry. When you book your holiday with Viva Holidays, you will have peace of mind knowing that you are booking with one of Australia's most trusted travel companies.

24/7 ASSISTANCE

When you book with Viva Holidays, you'll never be on your own. In the event of unforeseen circumstances, our customer care team is available 24 hours a day, seven days a week.

TAILOR MADE HOLIDAYS

Whether it's sipping a cocktail at a rooftop bar in Bangkok, snorkelling the turquoise waters off Koh Phi Phi or simply lazing on the white sands of Chaweng Beach, our team of travel specialists can design a custom made itinerary just for you!

Let us create your dream holiday today.

LIVE A LIFE OF TRAVEL. LET VIVA HOLIDAYS TAKE YOU THERE!





- ✈ INTERNATIONAL AIRPORT
- ✈ REGIONAL AIRPORT
- ATTRACTION
- ⋯ FERRY

PLANNING AHEAD

Thailand is a wonderful place to visit all year round. Before you begin your next trip, make sure to read our helpful travel information, to ensure you make the most of your time in Bangkok and beyond.



Koh Samui

WHEN TO GO

Thailand enjoys a tropical climate and is generally hot all year round. The best time to visit is November to February when the temperatures are slightly cooler and there is less rainfall.

LANGUAGE

Thai is the official language, however English is widely spoken in major tourist areas.

TIME

Thailand is 3 hours behind Australian Eastern Standard Time (AEST).

VISAS & PASSPORTS

All travellers to Thailand must carry a passport valid for at least six months beyond the date of departure from Australia. A Thailand Digital Arrival Card must be submitted through the Thailand Immigration Bureau website within three days before arriving in Thailand. A visa exemption of up to 60 days is permitted if entering via an international airport. As visa information can change at any time, we recommend you seek advice regarding passports, visas, and other travel requirements at smartrtraveller.gov.au

CURRENCY

Baht (THB)

TIPPING & ETIQUETTE

Tipping is not customary; however a token of appreciation is always welcome. Dress conservatively when visiting religious sites. Avoid wearing short skirts or shorts above the knee, singlets or sleeveless blouses. Remember to remove your shoes before entering a temple. Thai culture is unique so take some time to learn about the varying customs and requirements.

SHOPPING

From the moment you reach Thailand, you'll be astounded by the sheer variety of goods on offer. At local markets and shopping centres (excluding the well known department stores) you'll find genuine savings. Bargaining is accepted just about everywhere except in supermarkets, department stores and hotels.

Tourists can claim VAT Tax Refund for purchase of goods with a value of THB2000 or more from select participating stores. On purchase, a passport must be presented for application forms to be processed. Goods, application form and original receipts must be presented at Customs prior to check-in for inspection and to VAT Refund for Tourist Office after immigration for the refund to be processed.

ELECTRICITY

220V 50Hz. An international adapter is required.

TEMPERATURE & RAINFALL

Phuket	J	F	M	A	M	J	J	A	S	O	N	D
Temperature (max °C)	32	33	34	34	33	32	32	31	31	31	31	32
Average rainfall (mm)	23	26	59	138	270	237	284	283	387	296	174	62

Koh Samui	J	F	M	A	M	J	J	A	S	O	N	D
Temperature (max °C)	29	30	31	32	33	32	32	32	32	31	30	29
Average rainfall (mm)	138	58	78	77	147	113	123	119	117	290	490	209

Bangkok	J	F	M	A	M	J	J	A	S	O	N	D
Temperature (max °C)	32	33	34	35	34	33	33	33	32	32	32	31
Average rainfall (mm)	9	30	29	65	220	149	155	197	344	242	48	10

Chiang Mai	J	F	M	A	M	J	J	A	S	O	N	D
Temperature (max °C)	29	32	35	36	34	33	32	31	32	31	30	28
Average rainfall (mm)	8	9	19	54	153	117	153	225	200	118	51	18

EXPERIENCES YOU'LL LOVE

The best part of any journey is the experiences you have along the way, leaving you with memories to relive long after the holiday is over.

Thailand has countless amazing things to see and do. Here are some of our favourites to inspire your wanderlust.





Similan Islands

ISLAND HOPPING

Island hopping is the perfect way to uncover Thailand's coastline, blending adventure, relaxation and natural beauty. Each island offers unique charm – Phi Phi Island boasts limestone cliffs and turquoise waters, the Similan Islands are ideal for snorkelling among vibrant marine life, while Angthong Marine Park invites exploration of emerald lagoons and hidden beaches.



Phuket Old Town Market

SHOPPING

Thailand offers endless opportunities to blow your baht, from incredible shopping malls to the bustling street markets. With over 8,000 stalls, discover the sprawling Chatuchak Weekend Market in Bangkok. For a more upscale experience, head to ICONSIAM in Bangkok and Jungceylon in Phuket. Without doubt, there is something for everyone and every taste.



Temple of the Emerald Buddha, Wat Phra Kaew

THAILAND TEMPLES

Discover Thailand's stunning temples and palaces, rich in architecture and spiritual significance. Wander through Ayutthaya's ancient ruins, admire Bangkok's glittering Grand Palace and find serenity at Chiang Mai's Wat Phra Singh. Each sacred site is a timeless masterpiece inviting you to experience culture and wonder.



THAI EATS

Thailand's vibrant food scene is a feast for the senses, from sizzling street food in Bangkok to Michelin-starred dining. Join a traditional cooking class to master authentic Thai dishes or indulge in Chiang Mai's rich, aromatic Khao Soi. From colourful markets to elegant restaurants, every bite promises an unforgettable culinary journey.



Death Railway Bridge, Kanchanaburi

BRIDGE ON THE RIVER KWAI

Step back in time and discover the history of World War II with a visit to Kanchanaburi – home to the infamous Bridge on the River Kwai. Surrounded by stunning mountains and valley scenery, the historic cliffside rail has been transformed into a scenic walkway, allowing visitors to cross the bridge either on foot or aboard a small train.



Damnoen Saduak Floating Market

FLOATING MARKETS

No trip to Thailand is complete without experiencing the vibrant sights, scents and sounds of its iconic floating markets. Watch colourful boats float by, offering everything from tasty treats to unique souvenirs. Take a visit to the popular and visually iconic Damnoen Saduak, for a more local and authentic experience, make your way to Amphawa.



Wat Arun

BANGKOK

Pulsating with energy, Bangkok is a city where ancient temples meet glittering skyscrapers and street food sizzles beside luxury malls. From long-tail boat rides on the Chao Phraya River to golden sunsets over Wat Arun and vibrant markets to rooftop bars, this dynamic city blends tradition and modern flair with unforgettable moments around every corner.

SEE

- Admire the magnificence of the Grand Palace, Bangkok's most famous landmark
- View the Reclining Buddha at Wat Pho, 15 metres tall and covered in gold leaf

DO

- Explore Chatuchak Weekend Market, home to over 8,000 stalls

EAT & DRINK

- Sip a cocktail at Rooftop Bar at Sala Rattanakosin and watch the sun set over Wat Arun and Chao Phraya River
- Wander to Banthat Thong Road, a street food haven offering mouthwatering Thai eats

PRIVATE TRANSFERS

Bangkok Suvarnabhumi International Airport to/from Bangkok one way without guide (33km): By private car (1 to 2 People); **\$100*** per vehicle, (3 to 6 People); **\$118*** per vehicle.

Shared coach transfers are also available.



REF.	HOTELS	PAGE
1	Aloft Bangkok Sukhumvit 11	12
2	Amari Bangkok	12
3	Banyan Tree Bangkok	13
4	Capella Bangkok	13
5	Dusit Thani Bangkok	14
6	Four Points by Sheraton Bangkok Ploenchit Sukhumvit	12
7	Lebua Bangkok	13
8	LiT BANGKOK Hotel & Residence	12
9	Pathumwan Princess	15
10	Royal Orchid Sheraton Riverside Hotel Bangkok	15
11	Shangri-La Bangkok	15



BANGKOK HIDDEN TALAD NOI & CHINATOWN TOUR

Discover Bangkok's trendy Talad Noi neighbourhood with a local guide to lead you through the lively lanes and share their knowledge of the area's history. Visit Holy Rosary Church and Chow Sue Kong Shrine, admire local street art and sample the best of Chinese and Thai street food. Tour concludes in Chinatown where you will notice modern-day influences woven into this historical neighbourhood.

Includes:

- Sampling of local Thai and Chinese food
- Expert local guide

Duration: 2 hours and 30 minutes

Departs: Daily from Si Phraya - Chao Praya Express Pier at 4pm



BANGKOK ELECTRIC TUK TUK DISCOVERY TOUR

Explore Thonburi and Wang Lang districts in a sustainable and immersive way – on an electric tuk tuk. Meet local communities, discover hidden gems, experience markets, sample local food and relax in a riverside cafe to drink in the views.

Includes:

- Electric Tuk Tuk ride
- Food tastings and tea/coffee
- Flower and Wang Lang Markets
- Express Boat Ticket
- Expert local guide

Duration: 4 hours

Departs: Daily from Sanam Chai MRT station at 2pm



PRIVATE GRAND PALACE & CITY TEMPLES TOUR

Take a drive through Bangkok's bustling centre and explore a dazzling complex of temples, palaces and gardens as you head to Bangkok's Grand Palace. Along the way, check out the gilded decorations and admire the green stone statue at the Temple of the Emerald Buddha. At the Temple of the Reclining Buddha, see the largest collection of Buddha images.

Includes:

- Expert guide/driver
- Transport by air-conditioned vehicle
- Return transfers from Bangkok accommodation

Duration: 4 hours 30 minutes

Departs: Daily from Bangkok at 8am

	Adult/Child
Walking Tour	\$50*

	Adult/Child
Sightseeing Tour	\$99*

	2 People	3 to 5 People
Sightseeing Tour	\$207*	\$174*



PRIVATE FLOATING MARKETS TOUR

Get a glimpse of everyday life in Thailand with a visit to the Damnoen Saduak Floating Market. An exhilarating narrow long-tailed speedboat ride through the marshes and stilt houses prepares you for this unique experience. Watch as local vendors in Thai-style canoes sell their colourful produce and handicrafts.

Includes:

- Damnoen Saduak Floating Market
- Long-tailed speedboat ride
- Expert guide/driver
- Transport by air-conditioned vehicle
- Return transfers from Bangkok accommodation

Duration: 4 hours

Departs: Daily from Bangkok at 7am



PRIVATE BRIDGE ON THE RIVER KWAI WITH TRAIN

The infamous Bridge on the River Kwai is one of the most visited attractions in the stunning Kanchanaburi Province. Visit the war cemetery and continue to Hellfire Pass Museum. Enjoy an exhilarating long-tailed speedboat ride along the river before lunch. Next, take a scenic 45 minute drive to Hellfire Pass and Memorial. Learn the history of the railway which was built with forced labour during World War 2, in part by Allied prisoners of war. Return to Bangkok in the afternoon.

Includes:

- Long tail boat ride on River Kwai
- Lunch at a local restaurant
- Expert guide/driver
- Return transfers from Bangkok accommodation

Duration: 9 hours

Departs: Daily from Bangkok at 8:30am



AYUTTHAYA – ANCIENT CAPITAL OF THAILAND

Travel 86 kilometres north of Bangkok, through rural countryside to Thailand's ancient capital Ayutthaya.

Once a thriving commercial centre, today only the ruins of this splendid city remain. From these ruins see how glorious this ancient capital used to be. Visit temples such as Wat Phra Si Sanphet, Wat Chaiwatthanaram and Wat Mahathat to see an image of a Buddha head in tree roots. Enjoy a cruise on the Grand Pearl Cruise Liner returning you to the city.

Includes:

- Afternoon river cruise
- Lunch • Expert guide/driver
- Transport by air-conditioned vehicle
- Return transfers from Bangkok accommodation

Duration: 9 hours

Departs: Wed to Mon from Bangkok at 6:15am

	2 People	3 to 5 People
Sightseeing Tour	\$154*	\$117*

	2 People	3 to 5 People
Sightseeing Tour	\$251*	\$194*

	2 People	3 to 5 People
Sightseeing Tour	\$278*	\$228*

BANGKOK ACCOMMODATION

ALOFT BANGKOK SUKHUMVIT 11

◆◆◆◆



35 Sukhumvit Soi 11, Sukhumvit Road, Wattana, Bangkok
MAP PAGE 10

From **\$250***

- ◆ Easy access to the exciting nightlife and entertainment of Soi 11
- ◆ Spacious loft inspired rooms and suites with modern amenities
- ◆ Rooftop pool with expansive views of Bangkok's skyline

Location: In a prime location with direct access to Sukhumvit Road, famous for its energetic nightlife and extensive dining options. Convenient to local transport with a hotel shuttle to Nana BTS Skytrain. Distances: Siam Paragon Mall 3.3km. Nearest BTS Skytrain station: Nana.

Property Features: Pool, Restaurant, Bars (2), Café, Fitness centre, Laundry, 298 rooms.

Room Features: Air-conditioning, Mini bar, Tea/coffee making facilities, Cable TV, USB outlets, Hair dryer, Bathrobes, Safe.

Max Capacity: Chic/Loft/Urban/Breezy – 3.



FOUR POINTS BY SHERATON BANGKOK PLOENCHIT SUKHUMVIT

◆◆◆◆



566 Ploenchit Road, Lumpini, Pathumwan, Bangkok
MAP PAGE 10

From **\$250***

- ◆ DEE Lounge & Beer Garden is a vibrant bar with evening live music
- ◆ Stylish, modern rooms with abundant natural light and skyline views
- ◆ Walking distance to a variety of shopping malls, restaurants and bars

Location: Set in the heart of Bangkok in the upscale Ploenchit district offering a refined atmosphere with fine dining and chic boutiques. Distances: Siam Paragon Mall 4.9km. Nearest BTS Skytrain station: Ploenchit.

Property Features: Pool, Restaurant, Bar, Room service, Fitness centre, Guest laundry, 370 rooms.

Room Features: Air-conditioning, Mini fridge, Tea/coffee making facilities, Cable TV, Hair dryer, Bathrobes, Safe.

Max Capacity: Superior King/Superior Twin/Deluxe King/Deluxe Twin – 3.



LIT BANGKOK HOTEL & RESIDENCE

◆◆◆◆◇



36/1 Soi Kasemsan 1, Rama1 Road, Pathumwan, Bangkok
MAP PAGE 10

From **\$259***

- ◆ Walk to Siam Square, MBK and street food haven Banthat Thong Road
- ◆ Rooms and suites each have their own distinctive design features
- ◆ Two bedroom suite options are great for families

Includes full buffet breakfast daily and 1 x ten minute foot massage per person.

Location: Set within Bangkok's premier shopping, dining and entertainment district. Distances: Siam Paragon Mall 1 km. Nearest BTS Skytrain station: National Stadium.

Property Features: Pool, Spa, Restaurants (2), Bar, 24 hour room service, Day spa, Fitness centre, Steam room (separate male & female), Laundry/dry cleaning service, 24 hour reception, Non smoking, 127 rooms.

Room Features: Air-conditioning, Tea/coffee making facilities, Mini bar, Cable TV, Hair dryer, Bathrobes, Safe.

Max Capacity: Different Degree/Extra Radiance/Full Spectrum – 2, Triple Luxe Suite/ 1 Bedroom Superior Suite – 3, 1 Bedroom Deluxe Suite/1 Bedroom Duplex Suite – 3 adults or 2 adults/2 children, 2 Bedroom Deluxe Suite/2 Bedroom Duplex Suite – 5 adults or 4 adults/2 children.



AMARI BANGKOK

◆◆◆◆



847 Petchburi Road, Ratchathewi, Bangkok
MAP PAGE 10

From **\$321***

- ◆ Central location near Platinum Fashion Mall, CentralWorld, and BTS stations
 - ◆ Outdoor pool, fitness centre, spa, and Thai & international dining
 - ◆ Modern, spacious rooms with Thai-inspired accents and city views
- Includes full buffet breakfast daily.**

Location: In the Pratunam district, just steps from Platinum Fashion Mall and within walking distance to shopping malls CentralWorld, Central Chidlom, Gaysorn Amarin and Siam Paragon, 2 BTS stations and the Airport Rail Link. Distances: Siam Paragon Mall 1.1km. Nearest BTS Skytrain station: Chit Lom or Ratchathewi.

Property Features: Pool (outdoor), Restaurants (4), Bars (3), 24 hour room service, Breeze Spa, FIT Centre, Pilates, Squash courts, Shopping arcade, Laundry/dry cleaning services, 24 hour reception, 564 rooms.

Room Features: Air-conditioning, Tea/coffee making facilities, Mini bar, Cable TV, Ironing facilities, Hair dryer, Bathrobes, Safe.

Max Capacity: Deluxe/Grand Deluxe – 3, Premier/Club Premier – 2 adults or 2 adults/ 2 children.



* FROM PRICES ARE A GUIDE ONLY, subject to change and availability and are in Australian Dollars. Prices are per room per night for 2 people, unless otherwise specified and based on the lowest room category for travel in low season. For full terms and conditions, refer to the Booking Conditions on the inside back cover of this brochure.

BANYAN TREE BANGKOK



Horizon City View

21/100 South Sathon Road, Sathon, Bangkok
MAP PAGE 10

From **\$444***

- ❖ Home to the iconic rooftop Vertigo and Moon Bar
 - ❖ Enjoy the culinary journey on the River of Kings, Saffron and Apsara Cruise
 - ❖ Exclusive use of 19th floor Club lounge for Panorama Club Room guests
- Includes full buffet breakfast daily.**

Location: An urban resort conveniently located in the Sathon/Silom area with easy access to MRT/BTS stations. Distances: Siam Paragon Mall 3.2km. Nearest BTS Skytrain station: Sala Daeng.

Property Features: Pool, Spa, Restaurants (5), Bars (3), Lounge, 24 hour room service, Day spa, Fitness centre, Resort shop, 24 hour reception, 327 rooms.

Room Features: Air-conditioning, Tea/coffee making facilities, Mini bar, Cable TV, Hair dryer, Bathrobes, Safe.

Max Capacity: Horizon City View/Horizon Park View/Panorama Club City/Panorama Club Park/Skyline City View/Skyline Park View/One Bedroom Serenity Suite – 3, 2 Bedroom Suite – 5.



CAPELLA BANGKOK



Riverfront

300/2 Charoenkrung Road, Yannawa, Sathon, Bangkok
MAP PAGE 10

From **\$1589***

- ❖ Spacious rooms with panoramic river views & private balcony or verandah
 - ❖ Dinner at Phra Nakhon offers an authentic local dining experience
 - ❖ Culturists deliver prompt, personalised service with warmth and genuine care
- Includes breakfast daily, bubbles and bonbons on arrival, complimentary non-alcoholic mini bar, complimentary sunset “Cin Cin” hour.**

Location: With panoramic views of the majestic Chao Phraya River, Capella Bangkok is an oasis of serenity against the hustle of vibrant Bangkok. Distances: Siam Paragon Mall 5km. Nearest BTS Skytrain Station: Saphan Taksin.

Property Features: Pool, Restaurants (2), Deli, Bar, 24 hour room service, Lounge, Day spa, Complimentary resort boat shuttle, 24 hour reception, 24 hour fitness centre, Laundry/dry cleaning service, Gift shop, 101 rooms.

Room Features: Pool (Villa), Air-conditioning, Balcony or terrace, Mini bar, Nespresso machine, Smart TV, Bluetooth sound system, USB outlets, Universal power outlets, Bathrobes, Hair dryer, Safe.

Max Capacity: Riverfront/Riverfront Premier/River Suite/Villa – 3.



LEBUA BANGKOK



lebua Suite City View

1055 Silom Road, Bangrak, Bangkok
MAP PAGE 10

From **\$388***

- ❖ Elegant all-suite hotel with sweeping views of the city or Chao Praya River
 - ❖ Impressive set of dining outlets from Michelin star restaurants to iconic Sky Bar
 - ❖ Tower Club suites have exclusive access to the Club Lounge
- Includes full buffet breakfast daily.**

Location: Perched high above the Chao Praya River, the hotel offers easy access to Bangkok's landmarks, shopping, and nightlife with the BTS and boat piers moments away. Distances: Siam Paragon Mall 4.7km. Nearest BTS Skytrain station: Saphan Taksin.

Property Features: Pool (outdoor), Restaurants (5), Bars (6 – including rooftop), 24 hour room service, Day spa, Fitness centre, Scheduled Tuk Tuk service to BTS Skytrain station (free), Laundry/dry cleaning service, 285 rooms.

Room Features: Air-conditioning, Balcony, Mini bar, Tea/coffee making facilities, Cable TV, Hair dryer, Bathrobes, Safe.

Max Capacity: lebua Suite City View/lebua Suite River View/Tower Club Suite City View/Tower Club Suite River View – 3, lebua Suite 2 Bedroom/Tower Club Suite 2 Bedroom – 5, lebua Suite 3 Bedroom/Tower Club Suite 3 Bedroom – 7.



BANGKOK ACCOMMODATION

DUSIT THANI BANGKOK



98 Rama IV Road, Silom, Bangkok

MAP PAGE 10

From **\$832***

- ❖ An iconic Bangkok hotel reborn in 2024, redefining luxury stays with world-class design and exceptional Thai hospitality
- ❖ Devarana Wellness offers holistic wellness, spa rituals & fitness classes
- ❖ Spacious guestrooms with timeless Thai-inspired furnishings all with uninterrupted views of Lumpini Park and the city skyline
- ❖ Diverse dining options from fine-dining restaurant Cannubi by Umberto Bombana to handcrafted cocktails and panoramic city views at Spire Rooftop Bar

Includes full buffet breakfast daily.

Location: In a prime location presiding over Lumpini Park, this elegant hotel is integrated into the Dusit Central Park complex and has easy access to the BTS and Metro stations. Distances: Siam Paragon Mall 2.4km. Nearest BTS Skytrain station: Sala Daeng.

Property Features: Pool (infinity), Restaurants (3), Bars (4 – including rooftop), Café, 24 hour room service, Kids club 0-15 years, Devarana Wellness, Fitness centre, Steam room, Yoga classes, Pilates, Laundry/dry cleaning service, 24 hour reception, 257 rooms.

Room Features: Air-conditioning, Mini bar, Tea/coffee making facilities, Smart TV, USB outlets, Hair dryer, Bathrobes, Safe.

Max Capacity: Deluxe King Park/Deluxe Corner Park/Premier King Park/Premier Corner Park/Club King Park/Club Corner Park/Club Suite – 3.



Deluxe King Park



* FROM PRICES ARE A GUIDE ONLY, subject to change and availability and are in Australian Dollars. Prices are per room per night for 2 people, unless otherwise specified and based on the lowest room category for travel in low season. For full terms and conditions, refer to the Booking Conditions on the inside back cover of this brochure.

PATHUMWAN PRINCESS



Deluxe Classic

444 Phayathai Road, Wangmai, Pathumwan, Bangkok
MAP PAGE 10

From **\$265***

- ❖ Bright, modern rooms with most boasting memorable skyline views
- ❖ The Olympic Club, the biggest hotel fitness centre in Bangkok
- ❖ Huge array of restaurants including a bakery

Includes full buffet breakfast daily.

Location: Set within MBK shopping centre and close to the Siam Centre. Distances: Siam Paragon Mall 800m. Nearest BTS Skytrain station: National Stadium.

Property Features: Pool and jacuzzi (outdoor), Restaurants and bars (6), Lounge, Bakery, Room service, Day spa, Fitness centre, Tennis court, Jogging track, Squash courts (2), Badminton, Laundry/dry cleaning service, 24 hour reception, 445 rooms.

Room Features: Air-conditioning, Tea/coffee making facilities, Filtered water dispenser, Mini bar, Smart TV, In-room movies (extra charge), USB outlets, Universal power outlets, Hair dryer, Safe.

Max Capacity: Deluxe Classic/Grand Deluxe/Grand Deluxe Corner – 3, One Bedroom Premier Suite – 3 adults or 2 adults/2 children.



ROYAL ORCHID SHERATON RIVERSIDE HOTEL BANGKOK



Deluxe River View

2 Charoen Krung Road Soi 30, Bangrak, Bangkok
MAP PAGE 10

From **\$232***

- ❖ All rooms have unobstructed views of the Chao Phraya River
- ❖ Resort style swimming pool surrounded by tropical greenery in the heart of the city
- ❖ Board a boat at the hotel's public pier to discover Bangkok's breathtaking sites

Location: Set alongside the Chao Phraya River and opposite ICONSIAM with convenient shuttle boats to iconic attractions across Bangkok. Distances: Siam Paragon Mall 4.5km. Nearest BTS Skytrain station: Saphan Taksin.

Property Features: Pools (2), Spa, Restaurants (4), Bar, 24 hour room service, Day Spa, 24 hour fitness centre, Tennis court, Laundry/dry cleaning service, 24 hour reception, 726 rooms.

Room Features: Air-conditioning, Tea/coffee making facilities, Cable TV, USB outlets, Hair dryer, Bathrobes, Safe.

Max Capacity: Deluxe River View/Premium Deluxe River View/Executive Club River View – 3. Other room types also available.



SHANGRI-LA BANGKOK



Deluxe

89 Soi Wat Suan Plu New Road, Bangrak, Bangkok
MAP PAGE 10

From **\$413***

- ❖ Prime riverside location with unrivalled leisure facilities
- ❖ Thai-inspired rooms that seamlessly blend authentic design with modern comfort
- ❖ Direct access to the SkyTrain, public ferry terminal and buses

Includes full buffet breakfast daily.

Location: On the Chao Phraya River, adjacent to the skytrain station. Distances: Siam Paragon Mall 4.4km. Nearest BTS Skytrain Station: Saphan Taksin.

Property Features: Pool, Restaurants (6), Bars (2), 24 hour room service, Club lounge, CHI The Spa, Gym, Tennis court, Laundry/dry cleaning service, 802 rooms.

Room Features: Air-conditioning, Tea/coffee making facilities, Mini bar, Smart TV, In-room movies (extra charge), Ironing facilities, Hair dryer, Safe.

Max Capacity: Deluxe/Deluxe River View/Deluxe Balcony/Executive Suite/Executive River View Suite/Horizon Club/Horizon Executive River View Suite//Krungthep River View – 3, Horizon Club/Horizon Club River View – 2.



PHUKET

Phuket, the 'Pearl of the Andaman' is Thailand's largest island and offers white-sand beaches, turquoise waters, and dramatic limestone cliffs. Popular Patong Beach buzzes with nightlife and shopping, while Karon, Kata, and Kamala cater to families. Discover Old Phuket Town's Sino-Portuguese architecture, vibrant shrines, temples and charming cafés for a glimpse into the island's rich cultural heritage.

SEE

- See the giant white Big Buddha sitting atop Nakkerd Hill close to Chalong Bay
- Head up to Karon View Point for amazing views over Kata Noi, Kata and Karon beaches

DO

- Travel via speedboat to Phang Nga Bay, to see James Bond Island and swim in the emerald waters
- Make your way to Phuket Town Night Markets for live music, local food stalls and shopping

EAT & DRINK

- Savor local Thai flavours at Phuket's first One Michelin Star restaurant, PRU
- Dine on Mediterranean cuisine with a crafted cocktail in hand at chic Fira Beach Club



PHI PHI ISLAND TOUR BY SPEEDBOAT

Take a trip to the Phi Phi Islands, a must for anyone visiting Phuket. Hop onto a speedboat and escape to the stunning beauty of the region. Pileh Lagoon is known for its scenic limestone cliffs, coral reefs and great snorkelling. Enjoy a delicious buffet lunch before visiting Bamboo Island. Laze on the beach or swim over the large coral reefs.

Includes:

- Phi Phi Islands speedboat cruise
- Snorkelling equipment
- Buffet lunch with beverages
- Return transfers from selected Phuket accommodation

Duration: 8 hours

Departs: Daily from Patong, Kata and Karon at 8am

	Adult	Child 3-11 yrs
Sightseeing Tour	\$212*	\$144*



PHANG NGA BY SPEEDBOAT & CANOE

Cruise out to Phang Nga Bay, passing by the limestone karst formations around Panak Island. Take a closer look in a canoe, to reach hidden lagoons. Learn about nearby Tapu Island where the James Bond movie was filmed. Visit the mangrove forest-shrouded fishing village of Koh Panyi. Grab lunch in the village and then travel to Koh Khai Nai for more snorkelling and swimming before heading back to the port.

Includes:

- Phang Nga Bay speedboat cruise
- James Bond Island • Canoe tour
- Buffet lunch with beverages • Expert guide
- Return transfers from selected Phuket accommodation

Duration: 8 hours

Departs: Daily from Patong, Kata and Karon at 8am

Not suitable for children under 3 yrs.

	Adult	Child 3-11 yrs
Sightseeing Tour	\$212*	\$144*



PHUKET MINIVAN RENTAL WITH DRIVER & GUIDE

Make the most of your time in Phuket and rent a private air-conditioned vehicle with an experienced guide. Enjoy the flexibility of seeing the island according to your own interests. Choose from multiple attractions and activities, take in the views from lookout points, or visit the beaches in Kata, Karon and Patong. See the marble Big Buddha statue and visit the Wat Chalong pagoda temple. Use the time to see the Chinese and Portuguese architecture of the historic city centre and learn the history behind the elegant façades.

Includes:

- Transport by air-conditioned vehicle • Expert guide

Duration: 4 or 8 hours

Departs: Daily from Phuket, on demand

Prices also available for 2 and 4 people.

	9 People
4 Hours	\$167* [^]
8 Hours	\$198* [^]

[^]Price based on per vehicle.



ELEPHANT HILLS

Welcome to Elephant Hills, Thailand's first unique luxury camp located in Khao Sok National Park. Whether you are looking for a nature escape on your honeymoon or travelling with the family, you'll find a truly one-of-a-kind experience upon entering the gates. Comprising of two tented camps – the Elephant Hills Camp and the floating Lake Camp, you will be at one with nature in a luxury setting. The floating Lake Camp is exclusive to Elephant Hills. This is one of the most unique and responsible ways to admire Asia's largest land mammals.

TRANSFERS

Elephant Hills is located in Khao Sok National Park and is a three hour drive from Phuket. Scheduled transfers depart Phuket hotels between 7am and 9am and from Phuket Airport at 9am. Transfers are also available from Krabi, Khao Lak, Koh Samui and Surat Thani.

Ask your travel agent for prices and further details.

JUNGLE SAFARI TOUR

2 NIGHTS

Travel to Elephant Hills Camp in Khao Sok National Park for a three day adventure. Elephant Hills is an ethical elephant sanctuary that allows an up-close experience with these gentle giants. Assist with food preparation and feeding and watch as the elephants take a mud bath. Stay in a luxurious tent for an experience that you will never forget.

INCLUDES

- 2 nights tented accommodation with private facilities at The Elephant Hills Camp
- 2 breakfasts, 3 lunches, 2 dinners
- Elephant experience
- Sok River canoe safari
- Jungle trek
- Expert guide
- Return scheduled transfers from Phuket accommodation

TRAVEL TYPE Independent

DEPARTS Daily from Phuket at 7am



Elephant Hills Camp

From **\$920*** per person twin share

Children's prices on application. Children 4 to 15 yrs stay and eat free when travelling with 2 adults for the months of May, Jun, Sep. Not suitable for children under 4 yrs.

1 Night Jungle Safari Tour and 3 Night Nature Safari Tour also available. Ask your travel agent for details.

JUNGLE & LAKE CAMP SAFARI TOUR

2 NIGHTS

Assist with food preparation and feeding Asia's largest land animals at Elephant Hills. Experience it in an almost untouched environment. Spend your first night at the Elephant Hills Camp and learn about and oversee the daily activities of these majestic animals. Spend the second night at the floating Lake Camp where you can sit on the front porch of your tent and enjoy the view or take a canoe trip on Cheow Larn Lake.

INCLUDES

- 1 night tented accommodation with private facilities at The Elephant Hills Camp
- 1 night tented accommodation with private facilities at The Lake Camp
- 2 breakfasts, 3 lunches, 2 dinners
- Elephant experience • Sok River canoe safari
- Cheow Larn Lake longtail boat ride
- Expert guide • Jungle trek
- Return scheduled transfers from Phuket accommodation

TRAVEL TYPE Independent

DEPARTS Daily from Phuket at 7am



Lake Camp

From **\$1120*** per person twin share

Children's price on application. Children 4 to 15 yrs stay and eat free when travelling with 2 adults for the months of May, Jun, Sep. Not suitable for children under 7 yrs. All guests are required to be able to swim.

*FROM PRICES ARE A GUIDE ONLY, subject to change and availability and are in Australian Dollars. Prices are per person twin share, unless otherwise specified and based on the lowest room category and travel in low season. For full terms and conditions, refer to the Booking Conditions on the inside back cover of this brochure.

PATONG BEACH

Patong Beach is Phuket's most iconic destination, famed for its vibrant energy, bargain shopping, and buzzing nightlife. Its three-kilometre stretch of golden sand offers everything from sunbathing to thrilling water sports. As night falls, Bangla Road lights up with clubs, bars, and entertainment. Don't miss the local cuisine – from sizzling street food to fresh seafood and Thai favourites served at beachfront eateries and bustling night markets.

PRIVATE TRANSFERS

Phuket International Airport to/from Patong Beach one way without guide (37km): By private car (1 to 2 People): **\$87*** per vehicle. (3 to 6 People): **\$96*** per vehicle.

Shared coach transfers are also available.



Patong Beach



REF.	HOTELS	PAGE
1	Amari Phuket	22
2	Burasari Phuket	18
3	Courtyard Phuket, Patong Beach Resort	19
4	Diamond Cliff Resort & Spa	22
5	Four Points by Sheraton Phuket Patong Beach Resort	19
6	Grand Mercure Phuket Patong	23
7	Holiday Inn Resort Phuket	20
8	Hotel Indigo Phuket Patong	22
9	The Kee Resort & Spa	21
10	Patong Resort Hotel	19
11	Phuket Graceland Resort and Spa	21
12	Phuket Marriott Resort & Spa, Merlin Beach	23

BURASARI PHUKET



Premier



Elite

18/110 Ruamjai Road, Patong, Amphur Kathu, Phuket
MAP PAGE 18

From **\$278***

- ❖ Stylish and comfortable rooms feature cheerful textiles and local artwork
 - ❖ Walking distance to Patong's markets and beachside restaurants
 - ❖ Pool bar offers games, billiards, sports TV and a library
- Includes full buffet breakfast daily, free mini bar replenished once daily.**

Location: A garden retreat in the middle of Patong's vibrant beach scene and nightlife. Distances: Phuket International Airport 37km, Beach 50m.

Property Features: Pools (2), Restaurant, Bars (2 – including swim-up), Juice bar, Room service, Spa Burasari (day spa), Laundry/dry cleaning service, 24 hour reception, 184 rooms.

Room Features: Air-conditioning, Balcony or terrace, Tea/coffee making facilities, Mini bar (free), Cable TV, Hair dryer, Bathrobes, Safe.

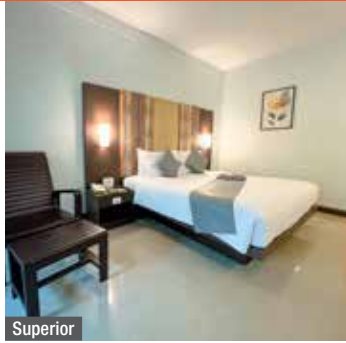
Max Capacity: Premier/Premier Pool View – 2, Elite/Mood Collection/Honeymoon/Elite Pool View/Elite Pool Access – 3.



* FROM PRICES ARE A GUIDE ONLY, subject to change and availability and are in Australian Dollars. Unless otherwise specified, prices for day tours and transfers are per person and prices for accommodation are per room per night for 2 people based on the lowest room category. All prices based on travel in low season. For full terms and conditions, refer to the Booking Conditions on the inside back cover of this brochure.

PATONG BEACH ACCOMMODATION

PATONG RESORT HOTEL



Superior

208 Raj-U-Thit 200 Pi Road, Patong Beach, Phuket
MAP PAGE 18

From **\$136***

- ❖ Prime location in the heart of Patong
 - ❖ Resort facilities catering for leisure and family guests including 2 outdoor pools
 - ❖ Alfresco Sky Bar is the perfect place to catch a sunset over a cool drink
- Includes buffet breakfast daily.**

Location: In an enviable location just a few minutes walk to Patong Beach, shopping and nightlife. Distances: Phuket International Airport 38.7km, Beach 150m.

Property Features: Pools (2), Restaurants (3), Bars (2), Room service, Fitness centre, Cooking class, Laundry service, 24 hour reception, Resort shop, 325 rooms.

Room Features: Air-conditioning, Balcony or terrace, Tea/coffee making facilities, Cable TV, Hair dryer, Safe.

Max Capacity: Superior/Deluxe/Premium Deluxe/Executive – 3.



FOUR POINTS BY SHERATON PHUKET PATONG BEACH RESORT



Standard

198/8-9 Thawewong Road, Patong Beach, Phuket
MAP PAGE 18

From **\$228***

- ❖ Beachfront resort blending oceanfront relaxation with vibrant city convenience
- ❖ Wide choice of rooms for every traveler from Pool Access to Family Suites
- ❖ 3 restaurants serving international, Pan-Asian and authentic Thai cuisine

Location: Just steps from Patong Beach and a short walk to the lively entertainment hub of Bangla Road. Distances: Phuket International Airport 34.9km, Beach 50m.

Property Features: Pools (4 – including saltwater and children's), Cabanas, Restaurants (3), Bars (2 – including swim-up), Room service, Kids club 4-11 years (free), 24 hour fitness centre, Playground, Laundry/dry cleaning service, 24 hour reception, 600 rooms.

Room Features: Air-conditioning, Balcony or terrace, Mini bar, Tea/coffee making facilities, Cable TV, Bluetooth speakers, USB outlets, Hair dryer, Safe.

Max Capacity: Standard/Pool Access – 2, Deluxe/Suite – 3.



COURTYARD PHUKET, PATONG BEACH RESORT



Guest

44 Thawewong Road, Patong, Phuket
MAP PAGE 18

From **\$211***

- ❖ Easy access to nightlife, entertainment, restaurants, and markets
- ❖ Five pools from kids' pool with slide and a quiet zone with swim-up bar
- ❖ Variety of dining across nine restaurants and bars from BBQ to beach club

Location: Set amongst 8 acres of palm trees and tropical garden, just across the road from Patong Beach. Distances: Phuket International Airport 40km, Beach 50m.

Property Features: Pools (5), Waterslides, Restaurants (5), Bars (4 – including 2 swim-up), 24 hour room service, Kids club 4-12 years (free), 24 hour fitness centre, Yoga, Muay Thai class, Resort shop, Laundry/dry cleaning service, 24 hour reception, 445 rooms.

Room Features: Air-conditioning, Balcony or terrace, Mini fridge, Tea/coffee making facilities, Cable TV, USB outlets, Hair dryer, Safe.

Max Capacity: Guest/Premier Guest/Premier Guest Pool View/Premier Guest Pool Terrace/Premier Guest Pool Access/Junior Suite – 3, Family Room – 4.



PATONG BEACH ACCOMMODATION

HOLIDAY INN RESORT PHUKET



Busakorn Wing



52 Thaweewong Road, Patong Beach, Phuket
MAP PAGE 18

From **\$330***

- ❖ Conveniently located, just a 10 minute walk to lively Bangla Road
- ❖ Family and couple friendly resort with extensive facilities and friendly staff
- ❖ Four dining outlets with a variety of cuisine from Italian fare to authentic Thai
- ❖ Families will love the colourful family rooms in the Main Wing and the brand new Splash Zone
- ❖ Busakorn Premium provides exclusive use of two pools and swim-up bar

Includes full buffet breakfast daily.

Location: A tropical oasis set amidst picturesque tropical gardens in the heart of Patong and just across the road from the beach. Distances: Phuket International Airport 45km, Beach 100m.

Property Features: Pools (6 – Busakorn pool for exclusive use of Busakorn guests), Water splash zone, Waterslide, Restaurants (4), Bar, Room service, Kids club 5-12 years (free), 24 hour fitness centre, 398 rooms.

Room Features: Air-conditioning, Balcony or terrace, Tea/coffee making facilities, Cable TV, Hair dryer, Safe.

Max Capacity: Standard/Family Room/2 Bedrooms Family Suite – 2 adults/2 children, Premium Villa Pool View – 2, Premium Pool View Balcony – 2 adults/1 child.



2 Bedrooms Family Suite



Standard



*** FROM PRICES ARE A GUIDE ONLY**, subject to change and availability and are in Australian Dollars. Prices are per room per night for 2 people, unless otherwise specified and based on the lowest room category for travel in low season. For full terms and conditions, refer to the Booking Conditions on the inside back cover of this brochure.

THE KEE RESORT & SPA



Plaza



Kee Sky Lounge

152/1 Thaweewong Road, Patong, Kathu, Phuket
MAP PAGE 18

From **\$222***

- ◆ Connected to the Kee Plaza with a variety of dining and shopping options
 - ◆ Enjoy a spacious retreat designed for comfort and ease
 - ◆ The Kee Sky Lounge rooftop bar offers sunset views over Patong Bay
- Includes full buffet breakfast daily and welcome drink on arrival.**

Location: Just a mere 150 metre walk away from lively Bangla Road. Distances: Phuket International Airport 45km, Beach 200m.

Property Features: Pool, Restaurants (2), Bars (2), Coffee shop, 24 hour room service, Day spa, Gym, Activities centre, Laundry/dry cleaning service, 24 hour reception, 255 rooms.

Room Features: Air-conditioning, Balcony or terrace, Tea/coffee making facilities, Cable TV, In-room movies (pay to view), Hair dryer, Bathrobes, Safe.

Max Capacity: Plaza/Deluxe/Deluxe Urban/Deluxe Pool View/Deluxe Urban Pool Access/Deluxe Pool Access/Sea View Suite – 3, Deluxe Jacuzzi – 2.



PHUKET GRACELAND RESORT AND SPA



Deluxe



190 Thaweewong Road, Patong, Phuket
MAP PAGE 18

From **\$308***

- ◆ Four sea view swimming pools featuring kids pools, jacuzzis and pool bars
 - ◆ Walking distance to shops, beach, restaurants and Bangla Road
 - ◆ Sunset Beer Café is perfect for evening drinks and live music
- Includes full buffet breakfast daily.**

Location: Across the road from Patong Beach, overlooking the Andaman Sea. Distances: Phuket International Airport 34km, Beach 100m.

Property Features: Pools (4), Restaurants (5), Bars (3), Limited room service, Kids club 6-12 years (extra charge), Day spa, Gym, Bowling alley, Pool tables, Beauty salon, Laundry/dry cleaning service, Resort shop, 24 hour reception, 600 rooms.

Room Features: Air-conditioning, Balcony or terrace, Tea/coffee making facilities, Mini fridge, Cable TV, Ironing facilities, Hair dryer, Safe.

Max Capacity: Deluxe/Deluxe Pool View/Deluxe Pool Access/Sunset Deluxe Pool View/Sunset Deluxe Pool Access – 4, Family/Family Pool View/Family Pool Access/Sunset Grand Deluxe/Graceland Suite Seaview 2 Bedroom/Sunset Grand Deluxe Pool Access – 5, Family Suite 2 Bedroom – 6, Deluxe Pool View Interconnecting – 8.



*FROM PRICES ARE A GUIDE ONLY, subject to change and availability and are in Australian Dollars. Prices are per room per night for 2 people, unless otherwise specified and based on the lowest room category for travel in low season. For full terms and conditions, refer to the Booking Conditions on the inside back cover of this brochure.

PATONG BEACH ACCOMMODATION

DIAMOND CLIFF RESORT AND SPA



Super Deluxe



One Bedroom Pool Villa

284 Prabamee Road, Patong, Phuket
MAP PAGE 18

From **\$284***

- ◆ Rooms have private balconies offering garden, pool or ocean views
- ◆ Modern comforts in a peaceful setting perfect for romance or family fun
- ◆ Complimentary shuttle bus twice a day to Patong Beach

Includes full buffet breakfast daily, welcome drink and cold towel on arrival, 1kg of fruit once per stay from hotel fruit shop.

Location: Nestled on the lush hillside at the northern end of Patong Beach, overlooking the Andaman Sea. Distances: Phuket International Airport 35km, Beach 150m.

Property Features: Pools (2), Restaurants (3), Bars (3 – 2 swim-up), 24 hour room service, Kids club 6-11 years, Child minding (extra charge), Day spa, Hotel clinic, Early check-in/late check-out lounge, Gym, Tennis court, 24 hour reception, 317 rooms.

Room Features: Air-conditioning, Balcony or terrace, Tea/coffee making facilities, Mini bar, Cable TV, Hair dryer, Bathrobes, Beach bag, Scales, Safe.

Max Capacity: Super Deluxe/Diamond Jacuzzi Suite/One Bedroom Pool Villa – 3, Grand Jacuzzi Suite – 4, Ocean Jacuzzi Suite – 2 adults/1 infant, Romantic Suite – 2 adults/1 child, Two Bedroom Pool Villa – 6.



FREE



AMARI PHUKET



Superior Balcony

2 Meun-Ngern Road, Patong Beach, Kathu, Phuket
MAP PAGE 18

From **\$345***

- ◆ Hidden on a secluded beach, a prime location in Patong's southernmost corner
- ◆ Contemporary Thai design, rooms offer partial ocean and ocean views
- ◆ Beachfront bliss, enjoy privacy and safety at this beachfront hotel

Includes full buffet breakfast daily.

Location: On a secluded private beach, with panoramic views over Patong Bay. Distances: Phuket International Airport 38km, Beach 1km.

Property Features: Pools (3), Restaurants (2), Bars (3), 24 hour room service, Kids club 4-12 years (free), Breeze day spa, Fitness centre, Tennis court, Dive centre, Shuttle service to Patong Beach (free), Laundry/dry cleaning service, 24 hour reception, 380 rooms.

Room Features: Air-conditioning, Balcony or terrace, Tea/coffee making facilities, Mini bar, Kitchen (Ocean Wing Suites), Satellite TV, Hair dryer, Safe.

Max Capacity: Superior Balcony/Superior Ocean Front Balcony/Deluxe Ocean Front Balcony/One Bedroom Suite Ocean Coral Lounge/One Bedroom Suite Ocean View Coral Lounge – 3, Two Bedroom Suite Ocean Coral Lounge – 5.



FREE

HOTEL INDIGO PHUKET PATONG



Standard City View

124 Rat U Thit 200 Pee Road Patong Kathu, Phuket
MAP PAGE 18

From **\$296*[^]**

- ◆ Blending contemporary elements with vibrant colours and cultures
 - ◆ Uniquely styled rooms with plush bedding and spa inspired bathrooms
 - ◆ Savour tranquility at the rooftop pool and a cocktail at The Cloud bar
- Includes full buffet breakfast daily.**

Location: In North Patong close to the beach, shops and entertainment hotspots. Distances: Phuket International Airport 35km, Beach 300m.

Property Features: Pool, Spa, Sundeck, Restaurants (2), Bars (2 – including swim-up), 24 hour room service, Fitness centre, Child minding service (extra charge), Laundry/dry cleaning service, Lift, Non smoking, 24 hour reception, 180 rooms.

Room Features: Air-conditioning, Balcony, Nespresso machine, Mini bar, Cable TV (free), Bluetooth speakers, Wireless charging, USB outlets, Bathrobes, Hair dryer, Safe.

Max Capacity: Standard City View/Standard Garden View/Standard Pool View/1 King Bed Junior Suite Garden View – 3.

^Minimum 2 night stay applies.



FREE

GRAND MERCURE PHUKET PATONG



Superior

1 Soi Rat-U-Thit 200 Pi 2, Patong, Kathu, Phuket
MAP PAGE 18

From **\$259***

- ❖ Rooms, suites and villas are beautifully appointed with modern amenities
 - ❖ Prime location in Patong just 500 metres from the beach
 - ❖ Large pool with swim-up bar, kids pool with mini slide and craft beer lounge
- Includes full buffet breakfast daily.**

Location: A serene hideaway tucked behind Phuket's Andaman seafront, with easy access to nightlife, beach, shopping centres and eateries just minutes walk away. Distances: Phuket International Airport 35km, Beach 500m.

Property Features: Pools (2 – including children's), Restaurant, Café, Bars (2), 24 hour room service, Kids club 4-12 years (free), Day spa, Fitness centre, Steam room, Laundry/dry cleaning service, 24 hour reception, 314 rooms.

Room Features: Air-conditioning, Balcony, Tea/coffee making facilities, Coffee pod machine, Mini bar, Smart TV, Hair dryer, Safe.

Max Capacity: Superior/Superior Suite/1 Bedroom Pool Villa – 3, Deluxe Pool Access – 2, 2 Bedroom Pool Villa – 5 adults/1 child.



FREE



PHUKET MARRIOTT RESORT & SPA, MERLIN BEACH



Guest Pool View

99 Muen-Ngoen Road, Tri-Trang Beach, Patong, Phuket
MAP PAGE 18

From **\$302***

- ❖ Idyllic beachfront resort perfect for a family holiday or quiet couple escape
- ❖ Private beach cove with house reef for snorkelling & diving
- ❖ Home to Phuket's first butterfly sanctuary

Location: Nestled on the secluded Tri-Ang Beach and just 10 minutes away from Patong's nightlife and shopping. Distances: Phuket International Airport 35.9km, Beachfront.

Property Features: Pools (3), Waterslides, Restaurants (5), Bars (3 – including swim-up), Coffee shop, Ice-cream shop, 24 hour room service, Kids club 4-12 years (free), Day spa, 24 hour fitness centre, Yoga, Games room, Laundry/dry cleaning service, Resort shop, 414 rooms.

Room Features: Air-conditioning, Balcony or terrace, Mini fridge, Tea/coffee making facilities, Cable TV, Hair dryer, Safe.

Max Capacity: Guest Pool View/Guest Pool Access/Larger Guest Pool View/Larger Guest Ocean View/Larger Guest Beach Front Access/1 Bedroom Suite Ocean View – 3. Other room types also available.



FREE



KARON & KATA BEACHES

South of Patong, Karon and Kata Beach offer a relaxed escape with palm-fringed shores, soft white sand, and crystal-clear waters. Ideal for those seeking uncrowded beaches, laid-back shopping and dining, these coastal gems blend tranquility with charm. Explore Wat Karon and its vibrant twice-weekly market or head to Kata for surfing and snorkelling among colourful coral reefs. Whether you're unwinding or adventuring, Karon and Kata promise a perfect beachside retreat.



Kata Beach

PRIVATE TRANSFERS

Phuket International Airport to/from Karon (39km) and Kata Beach (41km) one way without guide: By private car (1 to 2 People): **\$87*** per vehicle. (3 to 6 People): **\$96*** per vehicle.

Shared coach transfers are also available.



Karon Beach



Kata Noi Beach

REF.	HOTELS	PAGE
1	Beyond Resort Karon	24
2	Beyond Resort Kata	24
3	Centara Grand Beach Resort Phuket	28
4	Centara Karon Resort Phuket	25
5	Centara Kata Resort Phuket	25
6	Centara Villas Phuket	26
7	Holiday Inn Resort Phuket Karon Beach	26
8	Katathani Phuket Beach Resort	27
9	Le Meridien Phuket Beach Resort	29
10	The Shore at Katathani	28

BEYOND RESORT KARON



Deluxe Poolview

51 Karon Road, Karon, Phuket
MAP PAGE 24

From **\$364***

- ❖ Secluded and intimate adults only resort
- ❖ Spacious rooms offer panoramic ocean views
- ❖ Two restaurants and a swim-up bar

Includes full buffet breakfast daily.

Location: Tucked away in a quiet corner of Karon Beach and within walking distance of shops and restaurants. Distances: Phuket International Airport 47km, Beachfront.

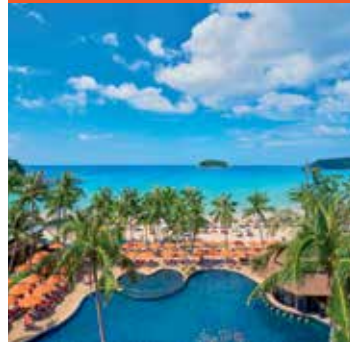
Property Features: Pools (2), Spa, Restaurants (2), Bar (including swim-up), Room service, Day spa, Cooking class (extra charge), Laundry/dry cleaning service, 24 hour reception, 81 rooms.

Room Features: Air-conditioning, Balcony or terrace, Tea/coffee making facilities, Cable TV, Hair dryer, Bathrobes, Safe.

Max Capacity: Deluxe Poolview/Deluxe Seaview/Deluxe Premier – 2.



BEYOND RESORT KATA



Superior

1 Pakbang Road, Tambon Karon, Phuket
MAP PAGE 24

From **\$278***

- ❖ Enjoy incredible sunset views across the Andaman Ocean
- ❖ The only resort with direct access to Kata Beach
- ❖ Contemporary Thai design amid lush tropical gardens

Includes full buffet breakfast daily.

Location: An absolute beachfront resort set on the golden sands of Kata Beach. Distances: Phuket International Airport 46km, Beachfront.

Property Features: Pool (including children's), Restaurants (2), Bars (2), Room service, Coffee shop, Kids club 2-12 years (free), Day spa, Gym, Laundry/dry cleaning service, 275 rooms.

Room Features: Air-conditioning, Balcony or terrace, Tea/coffee making facilities, Mini fridge, Smart TV, Beach bag, Hair dryer, Bathrobes, Safe.

Max Capacity: Superior/Deluxe/Deluxe Premier Seaview/Deluxe Poolview/Junior Suite Seaview/Seaview Suite – 3, Superior Pool Access/Deluxe Pool Access – 2.



CENTARA KARON RESORT PHUKET



Superior City View

502/3 Patak Road, Karon Beach, Phuket
MAP PAGE 24

From **\$204***

- ◆ Newly renovated resort with sleek modern and bright interiors
 - ◆ Three distinct areas for unique experiences – Terrace, Lagoon and Tropicale
 - ◆ Pool area of 3,000 square metres with three pools, waterslides and splash zone
- Includes full buffet breakfast daily.**

Location: Perfectly positioned in Karon Town, surrounded by local markets, shops and eateries. Distances: Phuket International Airport 45km, Beach 300m.

Property Features: Pools (3), Waterslides, Restaurants (2), Bars (4), Room service, Kids club 4-9 years (free), E-Zone 10-17 years, Spa Cervaree (day spa), Fitness centre, Laundry/dry cleaning service, 380 rooms and villas.

Room Features: Air-conditioning, Balcony or terrace, Tea/coffee making facilities, Mini bar, Cable TV, USB outlets, Hair dryer, Safe.

Max Capacity: Superior City View – 2 adults/1 child, Superior Ocean View/Deluxe Pool View – 3 adults or 2 adults/2 children, Deluxe Family Suite – 3 adults or 2 adults/3 children, One Bedroom Pool Villa – 3, Two Bedroom Pool Villa – 5 adults or 4 adults/2 children. Other room types also available.



CENTARA KATA RESORT PHUKET



Deluxe Garden

54 Ked-Kwan Road, Kata Beach, Phuket
MAP PAGE 24

From **\$164***

- ◆ Suites are equipped with limited cooking facilities
 - ◆ Main swimming pool offers a waterslide, spa and swim-up pool bar
 - ◆ All rooms have a private balcony or terrace with pool or garden views
- Includes full buffet breakfast daily.**

Location: In the heart of Kata Village close to restaurants, shops and entertainment. Distances: Phuket International Airport 45km, Beach 600m.

Property Features: Pools (3), Restaurant, Bars (2), Room service, Gym, Volleyball, Laundry/dry cleaning service, 24 hour reception, 158 rooms.

Room Features: Air-conditioning, Balcony or terrace, Tea/coffee making facilities, Limited cooking facilities (Suites only), Mini bar, Cable TV, Hair dryer, Safe.

Max Capacity: Deluxe Garden/Deluxe Pool Access – 3, Family Garden View/Family Pool Access – 3 adults or 2 adults/2 children, 1 Bedroom Premium Suite Garden – 3 adults or 3 adults/2 children.



Deluxe Pool Access



KARON & KATA BEACHES ACCOMMODATION

CENTARA VILLAS PHUKET



Deluxe Villa Garden View



Deluxe Private Pool Villa

701 Patak Road, Tambol Karon, Phuket
MAP PAGE 24

From **\$198***

- ◆ Unique, tropical oasis – perfect for honeymooners or couples to unwind
 - ◆ Private Thai-style villas with private plunge pools in select villas
 - ◆ Cliffside dining with panoramic views and unforgettable sunset
- Includes full buffet breakfast daily.**

Location: Set on top of a hill, with sweeping views across the bay and Karon Beach, just minutes to the beach by a coastal pathway. Distances: Phuket International Airport 50km, Beach 500m.

Property Features: Thai cooking classes (extra charge), Pool, Restaurants (2), Bar, 24 hour room service, Day spa, Laundry/dry cleaning service, Scheduled shuttle service to Karon and Patong, 72 villas.

Room Features: Air-conditioning, Plunge Pool (Deluxe Private Pool Villa), Balcony or terrace, Tea/coffee making facilities, Mini bar, Cable TV, Hair dryer, Safe, Pillow menu.

Max Capacity: Deluxe Villa Garden View/Deluxe Villa Ocean View/Deluxe Spa Villa/ Deluxe Private Pool Villa – 3.



FREE



HOLIDAY INN RESORT PHUKET KARON BEACH



Standard



1 King 1 Bunk Premium

568 Patak Road, Karon, Phuket
MAP PAGE 24

From **\$281***

- ◆ Relaxed family friendly resort with waterslide and kids pool
 - ◆ Joe Kool's Poolside Grill offers alfresco dining
 - ◆ Kids will love the specially designed activities program
- Includes full buffet breakfast daily.**

Location: Set across the road from Karon Beach and just a 10 minute drive away from Patong. Distances: Phuket International Airport 45km, Beach 100m.

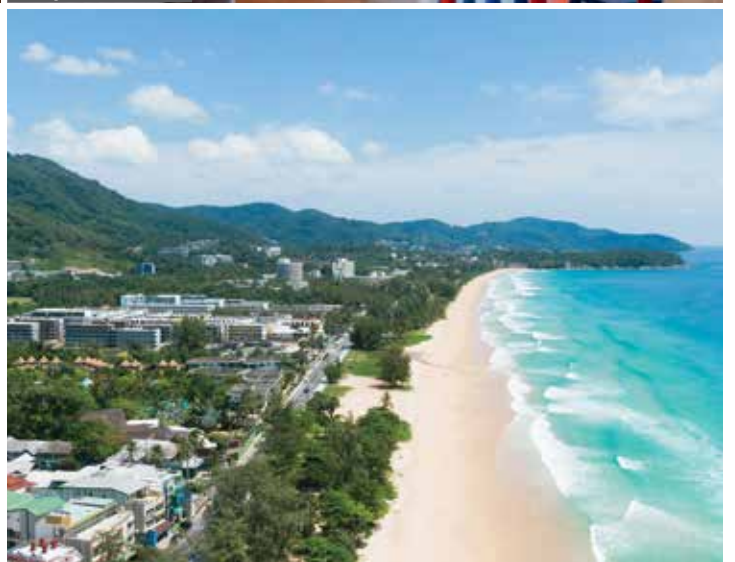
Property Features: Pools (3 – including children's), Waterslide, Restaurants (3), Bars (2), 24 hour room service, Kids club, 24 hour gym, Day spa, Laundry/dry cleaning service, 24 hour reception, 224 rooms.

Room Features: Air-conditioning, Balcony or terrace, Tea/coffee making facilities, Mini bar (stocked on request), Cable TV, Ironing facilities, Hair dryer, Safe.

Max Capacity: Standard/Standard Central Building/1 King Premium/1 Bed Villa – 3, 1 King 1 Bunk Premium – 2 adults/2 children.



FREE



* FROM PRICES ARE A GUIDE ONLY, subject to change and availability and are in Australian Dollars. Prices are per room per night for 2 people, unless otherwise specified and based on the lowest room category for travel in low season. For full terms and conditions, refer to the Booking Conditions on the inside back cover of this brochure.

KATATHANI PHUKET BEACH RESORT



14 Kata Noi Road, Kata Noi Beach, Phuket
MAP PAGE 24

From **\$351***

- ❖ 850 metres of unspoilt, white sandy beach
- ❖ Vhari Wing is a playful new space designed for families offering family friendly rooms and an Aqua Jungle Water Park with lazy river
- ❖ Spacious rooms with Thai-style furnishings and wooden floors
- ❖ Pool access rooms located in Bhuri wing are perfect for couples
- ❖ Spoilt for choice with 6 restaurants – from Thai to Seafood to Italian

Includes full buffet breakfast daily.

Location: Set on the southwest coast of Phuket Island, in secluded Kata Noi Bay.
Distances: Phuket International Airport 48km, Beachfront.

Property Features: Thai cooking classes (extra charge), Pools (6 – including children's with mini waterslide), Aqua Play Zone, Spa, Restaurants (9), Bars (5), 24 hour room service, Kids club 4-12 years (free), Day spa, Fitness centre, Sauna, Putting green, Laundry/dry cleaning service, Resort shop, 24 hour reception, 518 rooms.

Room Features: Air-conditioning, Balcony or terrace, Tea/coffee making facilities, Mini fridge, Cable TV, DVD player, Hair dryer, Bathrobes, Safe.

Max Capacity: Deluxe/Pool Access/1 Bedroom Royal Thani Suite – 2 adults/1 child, Family/Grand Deluxe – 2 adults/2 children, Grand Suite/Junior Suite/Junior Suite Ocean Front – 3 adults or 2 adults/2 children, Family Pool Access – 2 adults/3 children, Family Suite – 4 adults/2 children, Two Bedroom Royal Thani Suite – 4, Grand Deluxe Interconnecting – 4 adults/4 children.



Family Pool Access – Vhari Wing



Deluxe



*FROM PRICES ARE A GUIDE ONLY, subject to change and availability and are in Australian Dollars. Prices are per room per night for 2 people, unless otherwise specified and based on the lowest room category for travel in low season. For full terms and conditions, refer to the Booking Conditions on the inside back cover of this brochure.

KARON & KATA BEACHES ACCOMMODATION

CENTARA GRAND BEACH RESORT PHUKET



Deluxe

Patak Road, Karon Beach, Phuket
MAP PAGE 24

From **\$604***

- ❖ Features a water park with lazy river ride and waterslides
- ❖ Spacious rooms, suites and villas which all face the beach and Andaman Sea
- ❖ Prime location on Karon's white sandy beach

Includes full buffet breakfast daily.

Location: On the northern end of Karon Beach with scheduled shuttle services to Karon and Patong beaches. Distances: Phuket International Airport 44km, Beachfront.

Property Features: Pools (4 – including children's and adults only), Water park with waterslides and lazy river, Restaurants (3), Bars (4), 24 hour room service, Club lounge, Kids club 4-11 years (free), Children's playground, Day spa, Gym, Tennis court, Laundry service, 262 rooms.

Room Features: Air-conditioning, Balcony or terrace, Tea/coffee making facilities, Mini bar, Cable TV, Hair dryer, Safe.

Max Capacity: Deluxe/Deluxe Ocean/Premier Spa/Deluxe Suite Private Pool/Premier Suite Private Pool – 3 adults or 2 adults/2 children, Deluxe Spa/Premium Deluxe/Deluxe Spa Ocean View – 2, Villa 1 Bedroom Private Pool – 3. Other room types also available.



THE SHORE AT KATATHANI



Pool Villa

14 Kata Noi Road, Karon, Phuket
MAP PAGE 24

From **\$961***

- ❖ An intimate collection of private pool villa hideaways most with ocean views
- ❖ Soothe mind, body and soul in Serenity Spa
- ❖ Perfect for a honeymoon or romantic getaway

Includes full buffet breakfast daily.

Location: On the far end of stunning Kata Noi Beach, just south of Patong Beach. Distances: Phuket International Airport 49km, Beachfront.

Property Features: Pool (2), Restaurants (2), Bar, 24 hour room service, Day spa, Gym, Library, Resort shop, Laundry/dry cleaning service, 98 rooms.

Room Features: Private plunge pool and sundeck, Air-conditioning, Coffee pod machine, Tea/coffee making facilities, Mini bar, Cable TV, Docking station, USB outlets, Universal power outlets, Hair dryer, Bathrobes, Safe.

Max Capacity: Pool Villa/Seaview Pool Villa/Seaview Pool Villa In Love/Seaview Pool Villa Romance – 2, Two Bedroom Pool Villa – 4.



Seaview Pool Villa In Love

* FROM PRICES ARE A GUIDE ONLY, subject to change and availability and are in Australian Dollars. Prices are per room per night for 2 people, unless otherwise specified and based on the lowest room category for travel in low season. For full terms and conditions, refer to the Booking Conditions on the inside back cover of this brochure.

LE MERIDIEN PHUKET BEACH RESORT



29 Soi Karon Nui, Relax Bay, Tambon Karon Muang, Phuket
MAP PAGE 24

From **\$334***

- ❖ Secluded resort set within 40 acres of lush tropical gardens
- ❖ Rooms with modern amenities and private balconies with pool or sea views
- ❖ New Premium Room category featuring renovated rooms
- ❖ Over nine restaurants and bars serving diverse culinary delights from global flavours to beachside BBQ's
- ❖ Private yacht 'Born Free' available for exclusive luxury sea experiences
- ❖ Four swimming pools and poolside cabanas available for endless hours of fun or relaxation

Includes full buffet breakfast daily.

Location: Beachfront resort set on a pristine white sandy beach nestled in between Patong and Karon Beach. Distances: Phuket International Airport 50km, Beachfront.

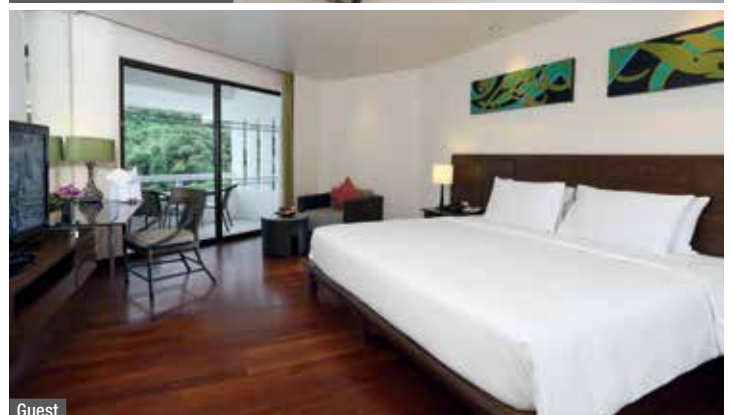
Property Features: Pools (4 – including children's), Private poolside cabanas (extra charge), Restaurants (7), Bars (2), 24 hour room service, Kids club 4-12 years (free), Le Spa (day spa), Fitness centre, 9-hole mini golf course, Driving range, Tennis courts (4), Squash courts, Use of non-motorised watersports, Games room, 24 hour reception, 470 rooms.

Room Features: Air-conditioning, Balcony or terrace, Tea/coffee making facilities, Mini bar, Cable TV, USB outlets, Ironing facilities, Hair dryer, Bathrobes, Safe.

Max Capacity: Guest/Guest Pool View/Guest Ocean View/Premium/1 Bedroom Suite Ocean View – 3, Ocean View Junior Suite – 2, 2 Bedroom Suite Ocean View – 4.



1 Bedroom Suite Ocean View



Guest



KAMALA & BANG TAO BEACHES

Located north of Patong, you'll find the coastal villages of Kamala and Bang Tao. The palm-fringed beaches of Bang Tao and Kamala cater to couples and families seeking a quieter and more relaxed atmosphere. Picturesque Kamala Beach offers a range of watersports and outdoor activities such as jet-skiing and parasailing, while Bang Tao is home to Asia's first integrated destination resort – Laguna, which sits on a three kilometre stretch of pristine beach.

PRIVATE TRANSFERS

Phuket International Airport to/from Bang Tao (16km) and Kamala Beach (23km) one way without guide: By private car (1 to 2 People): **\$87*** per vehicle. (3 to 6 People): **\$96*** per vehicle.

Shared coach transfers are also available.



Bang Tao



Kamala Beach



Kamala Beach

REF.	HOTELS	PAGE
1	Angsana Laguna Phuket	31
2	Banyan Tree Phuket	31
3	Sunprime Kamala Beach	30
4	Sunwing Kamala Beach	31

SUNPRIME KAMALA BEACH



Deluxe Ground Terrace

96/42-3 Moo 3, Kamala Beach, Kathu, Phuket
MAP PAGE 30

From **\$151***

- ❖ Adults only resort located directly on Kamala Beach
- ❖ Spacious rooms are well-appointed with private balconies
- ❖ Four pools and two swim-up bars

Includes full buffet breakfast daily.

Location: Situated beachfront, just a 10 minute walk to Kamala village and only a 15 minute drive by car to Patong. Distances: Phuket International Airport 30km, Beachfront.

Property Features: Pools (4), Restaurants (2), Bars (4), 24 hour room service, Gym, 24 hour reception, Convenience store, Shuttle bus to Patong (extra charge), 353 rooms.

Room Features: Air-conditioning, Balcony or terrace, Tea/coffee making facilities, Ironing facilities, Hair dryer, Safe.

Max Capacity: Deluxe Ground Terrace/Deluxe/Grand Deluxe/Grand Deluxe Pool View/ Junior Suite – 3, Grand Deluxe Two Bedroom – 4.



* FROM PRICES ARE A GUIDE ONLY, subject to change and availability and are in Australian Dollars. Unless otherwise specified, prices for day tours and transfers are per person and prices for accommodation are per room per night for 2 people based on the lowest room category. All prices based on travel in low season. For full terms and conditions, refer to the Booking Conditions on the inside back cover of this brochure.

KAMALA & BANG TAO BEACHES ACCOMMODATION

SUNWING KAMALA BEACH



Studio

96/66 Moo 3, Kamala Beach, Kathu, Phuket
MAP PAGE 30

From **\$194***

- ❖ Rooms are generous in size with a wide range of amenities
- ❖ Daily activities for children and nightly entertainment for the whole family
- ❖ Eight pools including waterslides for kids and adults

Includes full buffet breakfast daily.

Location: Set on the white sandy beach of Kamala Bay, and less than a kilometre from restaurants and shops. Distances: Phuket International Airport 30km, Beachfront.

Property Features: Pools (8), Restaurants (2), Bars (3), 24 hour room service, Kids club 3-15 years (free), Gym, Convenience store, Guest laundry, 24 hour reception, 289 rooms.

Room Features: Air-conditioning, Balcony or terrace, Limited cooking facilities with microwave, Cable TV, Refrigerator, Hair dryer, Safe.

Max Capacity: Studio/Happy Baby Studio/Royal Studio Pool Access/Lollo and Bernie Suite – 3 adults or 2 adults/2 children, Family Suite – 5 adults or 4 adults/2 children.



FREE



ANGSANA LAGUNA PHUKET



Laguna

10 Moo 4, Srisoonthorn Road, Thalang, Phuket
MAP PAGE 30

From **\$265***

- ❖ Modern rooms and suites with picturesque views – sea, pool, or garden
- ❖ Hotel has private beach access
- ❖ Free-flowing swimming pool and 101 activities available

Includes full buffet breakfast daily.

Location: Set on a natural lagoon on the tranquil shores of Bang Tao Bay and the blue waters of the Andaman Sea. This integrated resort sits on an 8km stretch of beach in the island's northwest. Distances: Phuket International Airport 18km, Beachfront.

Property Features: Pools (2), Restaurants and bars (7), 24 hour room service, Kids club 4-12 years (free), Angsana Spa, Fitness centre, Laundry/dry cleaning service, 24 hour reception, 375 rooms.

Room Features: Air-conditioning, Balcony or terrace, Tea/coffee making facilities, Mini bar, Cable TV, Ironing facilities, Hair dryer, Bathrobes, Safe.

Max Capacity: Laguna/Laguna Grand/Laguna Poolview/Laguna Pool Access/Angsana One Bedroom Loft – 3, Laguna Premier – 3 adults or 2 adults/2 children, Two Bedroom Island Suite/Two Bedroom Island Duplex – 5.



FREE

BANYAN TREE PHUKET



Banyan Pool Villa



Two Bedroom DoublePool Villa

Srisoonthorn Road, Amphur, Thalang, Phuket
MAP PAGE 30

From **\$752***

- ❖ Complimentary access to Rava Beach Club
- ❖ Luxurious all-pool villas surrounded by lush greenery
- ❖ Terra Kids Club offers a wide range of activities

Includes full buffet breakfast daily.

Location: An all-villa resort set on the white sands of Bang Tao Beach, 30 minutes drive from Patong. Distances: Phuket International Airport 17km, Beach 100m.

Property Features: Rava Beach Club, 18 hole golf course, Pool, Restaurants (5), Bars (2), 24 hour room service, Café, Kids club 5-12 years (free), Banyan Tree Spa, Fitness centre, Tennis court, Bicycle hire (free), Yoga classes, Wellbeing centre, Lagoon water activities, Resort boutique, 208 villas.

Room Features: Private spa/pool, Air-conditioning, Tea/coffee making facilities, Mini bar, In-room movies (extra charge), Sun lounges, Bathrobes.

Max Capacity: Banyan Pool Villa/Serenity Pool Villa – 2 adults/1 child, Signature Pool Villa/Grand Lagoon Pool Villa – 3 adults or 2 adults/1 child, Signature Two Bedroom Pool Villa – 4 adults/1 child. Other room types also available.



FREE



*FROM PRICES ARE A GUIDE ONLY, subject to change and availability and are in Australian Dollars. Prices are per room per night for 2 people, unless otherwise specified and based on the lowest room category for travel in low season. For full terms and conditions, refer to the Booking Conditions on the inside back cover of this brochure.

PHUKET BEACH HIDEAWAYS

Escape the crowds and uncover Phuket's hidden coastal gems. Step away from the bustle of the island's busier beaches and explore the tranquil charm of Mai Khao Beach, where untouched sands stretch along the serene Andaman Sea.

Rawai Beach, on the southern end of Phuket offers a vibrant local vibe with seafood markets, longtail boats, and gateway access to island-hopping adventures.



The Vijitt Resort Phuket

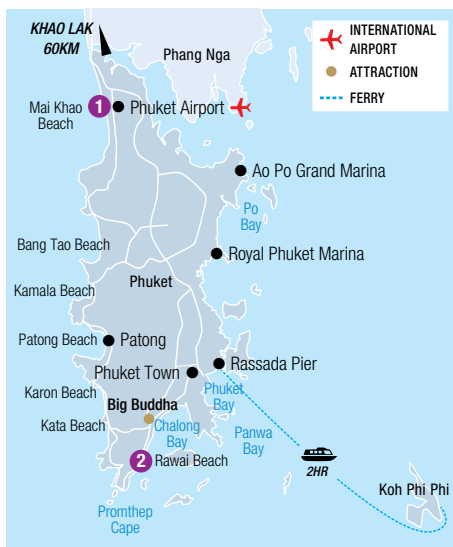
PRIVATE TRANSFERS

Phuket International Airport to/from Mai Khao Beach (10km) one way without guide: By private car (1 to 2 People): **\$87*** per vehicle. (3 to 6 People): **\$96*** per vehicle.

Phuket International Airport to/from Rawai Beach (42km) one way without guide: By private car (1 to 2 People): **\$87*** per vehicle. (3 to 6 People): **\$96*** per vehicle.



Le Meridien Phuket Mai Khao Beach Resort



Le Meridien Phuket Mai Khao Beach Resort

REF.	HOTELS	PAGE
1	Le Meridien Phuket Mai Khao Beach Resort	32
2	The Vijitt Resort Phuket	32

LE MERIDIEN PHUKET MAI KHAO BEACH RESORT



Deluxe

81 Moo 3, Tambon Mai Khao, Phuket
MAP PAGE 32

From **\$290***

- ❖ On the quiet shores of Mai Khao Beach with stunning sunset views
- ❖ Contemporary rooms and suites some with pool access and pool views
- ❖ Couples will enjoy the lagoon-style outdoor pool

Location: On the secluded golden shores of Mai Khao Beach and a convenient 15 minute drive from Phuket Airport. Distances: Phuket International Airport 13km, Beachfront.

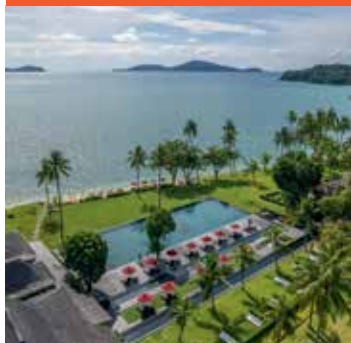
Property Features: Pools (2), Restaurants (3), Bar, Room service, Kids club (free), Day spa, 24 hour fitness centre, Cooking class, Bicycle rental, 240 rooms.

Room Features: Air-conditioning, Balcony or terrace, Mini fridge, Tea/coffee making facilities, Smart TV, Bathrobes, Hair dryer, Safe.

Max Capacity: Deluxe/Premium Pool View/Premium Cabana Terrace/Premium Pool Access – 3, Family/2 Bedroom Suite – 5. Other room types also available.



THE VIJITT RESORT PHUKET



Deluxe Villa

16 Moo 2, Viset Road, Friendship Beach, Rawai, Phuket
MAP PAGE 32

From **\$345***

- ❖ Peaceful beachfront all villa luxury retreat ideal for couples and honeymooners
 - ❖ 40 metre infinity edged pool overlooks the beach and surrounding islands
 - ❖ Dining experiences from in-villa BBQ's to romantic beachfront dinners
- Includes buffet breakfast daily and welcome drink on arrival.**

Location: Situated on a 250 metre stretch of Friendship Beach in Rawai area in the south of Phuket. Distances: Phuket International Airport 42km, Beachfront.

Property Features: Pool (2 – infinity and kids), Restaurants (2), Bar, Room service, Kids club (free), Day spa, Fitness centre, Courtesy shuttle service, Playground, Cooking class, 92 villas.

Room Features: Air-conditioning, Balcony or terrace, Mini fridge, Tea/coffee making facilities, Cable TV, Bathrobes, Hair dryer, Safe.

Max Capacity: Deluxe Villa/Deluxe Sea View Villa – 3. Other room types also available.





Le Méridien Khao Lak Resort & Spa

KHAO LAK

Khao Lak is a peaceful coastal escape where lush forests and rolling hills meet pristine white sandy beaches. Situated north of Phuket, it is home to waterfalls, vibrant marine life, and tranquil jungle trails – making it a nature lover’s paradise and one of Thailand’s most serene resort destinations.

SEE

- Watch baby turtle hatchlings released back into the sea at Thai Muang National Park
- Visit the International Tsunami Museum and understand what the locals of Khao Lak experienced during this unprecedented event

DO

- Shop for souvenirs and local handicrafts at the popular and lively Bang Niang Market
- Walk up to Ton Chong Fa Waterfall and cool off in one of the many clear water pools

EAT & DRINK

- For the best Pad Krapow and cheap beers, dine at Madam Thai Food in Takuapa

PRIVATE TRANSFERS

Phuket International Airport to/from Khao Lak one way without guide (80km): By private car (1 to 2 People): **\$166*** per vehicle, (3 to 6 People): **\$191*** per vehicle.

Shared coach transfers are also available.

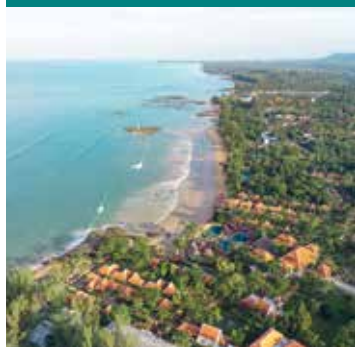


Khao Lak Beach



REF.	HOTELS	PAGE
1	Khao Lak Merlin Resort	33
2	Khaolak Laguna	33
3	Le Meridien Khao Lak Resort & Spa	34
4	The Little Shore Khao Lak by Katathani	35
5	Outrigger Khao Lak Beach Resort	34
6	The Sands Khao Lak by Katathani	34
7	The Sarojin	35

KHAOLAK LAGUNA



Siam Chalet

26/8 Moo 7, Petchakasem Road, Khuk-Khak, Takuapa, Phang Nga
MAP PAGE 33

From **\$247***

- ❖ Couples and families will love the swimming pools overlooking the sea
 - ❖ Daily activities include fitness centre and kayaking
 - ❖ Generous sized rooms are well appointed with Oriental artwork throughout
- Includes full buffet breakfast daily.**

Location: In the coastal area of Khao Lak, and within walking distance to the local shopping centre. Distances: Phuket International Airport 75km, Beachfront.

Property Features: Thai cooking classes (extra charge), Pools (4 – including children’s), Restaurants (2), Bars (2), Club Lounge, Room service, CHIVA SPA, Fitness centre, Sauna, Bicycle hire (free), Kids Club, Children’s playground, Laundry/dry cleaning service, 24 hour reception, 154 rooms.

Room Features: Air-conditioning, Balcony or terrace, Tea/coffee making facilities, Mini bar, Cable TV, Hair dryer, Beach bag, Bathrobes, Safe.

Max Capacity: Siam Chalet/Oriental Villa/Similan Pearl Villa – 3.



KHAO LAK MERLIN RESORT



Superior

7/7 Phetkasem Road, Lamkaen, Taimuang, Phang Nga
MAP PAGE 33

From **\$284***

- ❖ Direct access to 190 metres of Khao Lak Beach
 - ❖ Built around lagoons and cascading pools, leading to the beach
 - ❖ Sunset Hut offers a great location to watch the sun set with cocktail in hand
- Includes full breakfast daily.**

Location: Direct access to Khao Lak Beach and surrounded by 15 acres of tropical gardens. Distances: Phuket International Airport 60km, Beachfront.

Property Features: Wildlife night walk tour, Forest bathing Yoga, Nature arts and crafts, Pools (4), Restaurants (2), Bars (2), Limited room service, Day spa, Gym, Children’s playground, Tennis court, Table tennis, 236 rooms.

Room Features: Air-conditioning, Balcony or terrace, Tea/coffee making facilities, Mini bar, Cable TV, Hair dryer.

Max Capacity: Superior/Deluxe/Deluxe Pool Access/One Bedroom Pool Villa – 3, Two Bedroom Pool Villa – 6.



*FROM PRICES ARE A GUIDE ONLY, subject to change and availability and are in Australian Dollars. Unless otherwise specified, prices for day tours and transfers are per person and prices for accommodation are per room per night for 2 people based on the lowest room category. All prices based on travel in low season. For full terms and conditions, refer to the Booking Conditions on the inside back cover of this brochure.

KHAO LAK ACCOMMODATION

THE SANDS KHAO LAK BY KATATHANI



Sands

10/18 Petchkasem Road, Moo 7, Kukkak, Takuapa, Phang Nga
MAP PAGE 33

From **\$234***

- ◆ Resort divided into three zones for relaxing, playing and refreshing
 - ◆ Direct access to 200 metres of prime beachfront
 - ◆ Adults only pool and a water zone child's pool area
- Includes full buffet breakfast daily.**

Location: Set on the soft golden sands of Nang Thong Beach, just a few minutes walk to shopping and restaurants. Distances: Phuket International Airport 80km, Beachfront.

Property Features: Pools (3), Spa, Restaurants (3), Bars (4), Room service, Kids club 4-12 years (free), Day spa, Fitness centre, Yoga studio, Mini water park with waterslides and lazy river, Tennis court, Petanque Lane, 24 hour reception, Guest laundry, 439 rooms.

Room Features: Air-conditioning, Balcony or terrace, Tea/coffee making facilities, Mini bar, Cable TV, DVD player, Hair dryer, Bathrobes, Safe.

Max Capacity: Sands/Pool Access Junior Suite/Seaside Junior Suite – 3, Family/Family Slide/Pool Access Family – 2 adults/2 children, Two Bedroom Teen Suite – 2 adults/3 children, Sands Interconnecting – 6.



FREE



LE MERIDIEN KHAO LAK RESORT & SPA



King Guest

31 Moo 7 Bangmuong, Takuapa District, Khao Lak
MAP PAGE 33

From **\$138***

- ◆ Peaceful beachfront resort set on a stunning white sand beach
 - ◆ Savour Thai or international dishes from a choice of six restaurants and bars
 - ◆ Diverse accommodation options from Family Rooms, Pool Access and Pool Villas
- Includes full buffet breakfast daily.**

Location: Nestled on the white sands of Bangsak Beach offering panoramic ocean views. Distances: Phuket International Airport 9.2km, Beachfront.

Property Features: Pools (3 – including children's pool), Restaurants (3), Bars (3 – including swim-up), Coffee shop, Room service, Day spa, 24 hour fitness centre, Kids club 4-12 years, 269 rooms.

Room Features: Air-conditioning, Balcony or Terrace, Mini bar, Tea/coffee making facilities, Cable TV, Bathrobes, Hair dryer, Safe.

Max Capacity: King Guest/Twin Guest/1 Bedroom Pool Villa – 3, Family Room – 4. Other room types also available.



FREE

OUTRIGGER KHAO LAK BEACH RESORT



Deluxe

2/4 Moo 8, Bangmuong, Takuapa, Khao Lak
MAP PAGE 33

From **\$151***

- ◆ Absolute beachfront property nestled on the shores of the Andaman Sea
 - ◆ Spacious interconnecting rooms which are great for families
 - ◆ Seven standalone private Villas, four of which have private plunge pools
- Includes full buffet breakfast daily.**

Location: A picturesque beachfront resort set on Bangsak Beach with a number of restaurants and bars within walking distance. Distances: Phuket International Airport 89.7km, Beachfront.

Property Features: Pools (2 – including kids pool), Restaurants (2), Bar, Room service, 24 hour reception, Massage salas (3), Fitness centre, Guest activities, Kids Club 4-12 years, Games Room, Laundry/dry cleaning services, 158 rooms.

Room Features: Private pool (Pool Villa only), Air-conditioning, Balcony/terrace, Smart TV, Mini bar, Tea/coffee making facilities, Ironing facilities, Bathrobes, Hair dryer, Safe.

Max Capacity: Deluxe Garden Balcony – 3 adults or 2 adults/2 children, Family Garden Terrace – 2 adults/2 children, Garden Villa/Pool Villa – 2, Family Interconnecting – 6 adults or 4 adults/4 children.



FREE

* FROM PRICES ARE A GUIDE ONLY, subject to change and availability and are in Australian Dollars. Prices are per room per night for 2 people, unless otherwise specified and based on the lowest room category for travel in low season. For full terms and conditions, refer to the Booking Conditions on the inside back cover of this brochure.

THE LITTLE SHORE KHAO LAK BY KATATHANI



Pool Suite



Seafront Pool Villa In Love

10/28 Petchkasem Road, Moo 7, Kukkak, Takuapa, Khao Lak
MAP PAGE 33

From **\$610***

- ❖ A modern oasis of luxury, all suites and villas have a private pool
 - ❖ Tranquil resort ideal for couples, honeymooners and special occasions
 - ❖ Indulge in the signature the Black Sand Spa treatment at Nalinya Villa Spa
- Includes full buffet breakfast daily.**

Location: Situated in the heart of Khao Lak, with easy access to a variety of restaurants and shops. Distances: Phuket International Airport 76.4km, Beachfront.

Property Features: Beachfront pool, Restaurants (2), Bars (2), 24 hour room service, Day spa, Fitness centre, Boutique, Kids Club 4-12 years, Laundry/dry cleaning services, 101 suites and villas.

Room Features: Private terrace with pool, Air-conditioning, Mini bar, Tea/coffee making facilities, Smart TV, Bluetooth speaker, USB outlets, Universal power outlets, Bathrobes and slippers, Hair dryer, Safe.

Max Capacity: Pool Suite – 3, Seaview Pool Suite/Seafront Pool Villa In Love/Seaview Pool Villa Romance – 2, Seaside Two Bedroom Pool Suite – 4, Seaview Penthouse Family Pool Suite – 4 adults/2 children.



FREE



THE SAROJIN



Garden Residence



Pool Residence

60 Moo 2, Khuk Kak, Takua Pa, Phang Nga
MAP PAGE 33

From **\$410***

- ❖ Ideal for romantics, honeymooners and families with children 10 years and older
 - ❖ Rooms feature outdoor sun terrace with Thai sala
 - ❖ Private island excursions available for guests on Lady Sarojin private yacht
- Includes all day à la carte breakfast with sparkling wine until 6pm, welcome drink on arrival and daily fruit basket.**

Location: Secluded boutique resort set on a 11 kilometre white sandy beach close to five National Parks and the Similan and Surin Islands. Distances: Phuket International Airport 80km, Beachfront.

Property Features: Private boat charters, Cooking classes (extra charge), Pool, Restaurants (2), Bars (2), Room service, Day spa, Yoga, Non-motorised watersports, Mountain bikes, 56 rooms.

Room Features: Private pool (Pool Residence), Private jacuzzi pool (Jacuzzi Pool Suite), Garden sun terrace and sala, Air-conditioning, Tea/coffee making facilities, Mini bar, Smart TV, Bluetooth speakers, Pillow menu, Safe.

Max Capacity: Garden Residence/Pool Residence – 2 adults/1 child, Jacuzzi Pool Suite – 4, Two Bedroom Pool Residence – 4 adults/2 children.



FREE



*FROM PRICES ARE A GUIDE ONLY, subject to change and availability and are in Australian Dollars. Prices are per room per night for 2 people, unless otherwise specified and based on the lowest room category for travel in low season. For full terms and conditions, refer to the Booking Conditions on the inside back cover of this brochure.

KOH PHI PHI & KOH YAO

Koh Phi Phi is a group of six islands which sit out in the sparkling blue waters of the Andaman Sea.

The populated island of Koh Phi Phi Don is a flurry of activity with beach bars, restaurants, shops and a vibrant nightlife. Koh Phi Phi Leh is surrounded by stunningly beautiful beaches and bays.

Located in Phang Nga Bay, famous for its limestone formations and pristine beaches, are the islands of Koh Yao Noi and Koh Yao Yai. Both islands are where you go if you want to just unwind, relax and experience a tranquil, traditional Thai escape.

SEE

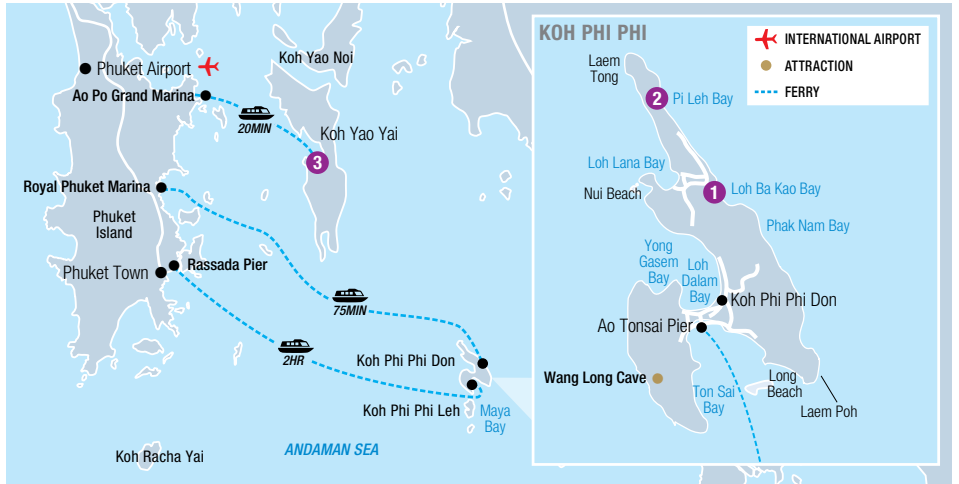
- Admire a stunning sunset while enjoying cocktails on the beach at Mama Resto Koh Phi Phi Don
- Watch hunters gather Swiftlet's bird nests, considered a delicacy in Asia, at Viking Cave on Koh Phi Phi Leh

DO

- Hire a kayak and explore the secluded caves and rocky outcrops around the islands
- Take a longtail boat to Pi Leh Bay and swim and snorkel in the emerald green waters



Koh Phi Phi



KOH PHI PHI

REF.	HOTELS	PAGE
1	Centara Villas Phi Phi Island	36
1	Outrigger Phi Phi Island Resort	37
2	SAii Phi Phi Island Village	37

KOH YAO

REF.	HOTELS	PAGE
3	Santhiya Koh Yao Yai Resort & Spa	37

CENTARA VILLAS PHI PHI ISLAND



Villa Ocean View

58 Moo 8, Ao Nang, Phi Phi Island
MAP PAGE 36

From **\$462***

- ❖ Offers a peaceful and tranquil escape in a lush jungle setting
- ❖ All villas and common areas boast stunning views of the turquoise Andaman Sea
- ❖ Wide variety of recreational activities, dining options and spa treatments

Includes buffet breakfast daily.

Location: An idyllic retreat on the island of Koh Phi Phi Don, just a 1 hour speedboat ride from Ao Po Grand Marina in Phuket. Distances: Beachfront.

Getting There: 1 hour land transfer from Phuket Airport to Ao Po Grand Marina, then 1 hour speedboat transfer. **\$142*** per adult one way. Child price on application.

Property Features: Pool, Restaurants (2), Bars (2), Room service, Day spa, Fitness centre, Sauna, Watersports centre, Gift shop, 41 villas.

Room Features: Air-conditioning, Balcony, Kitchenette (Duplex), Mini bar, Tea/coffee making facilities, Satellite TV, Bathrobes, Hair dryer, Safe.

Max Capacity: Villa Ocean View/Duplex Suite Spa Ocean View – 3.



*FROM PRICES ARE A GUIDE ONLY, subject to change and availability and are in Australian Dollars. Unless otherwise specified, prices for day tours and transfers are per person and prices for accommodation are per room per night for 2 people based on the lowest room category. All prices based on travel in low season. For full terms and conditions, refer to the Booking Conditions on the inside back cover of this brochure.

OUTRIGGER PHI PHI ISLAND RESORT



Superior Garden – Artist Impression

11 Moo 8 Laem Tong, Phi Phi Island
MAP PAGE 36

From **\$345***

- ❖ Prime beachfront location on the powder-soft sands of Laem Tong Beach
- ❖ Beachfront Suites and Hill Top Villas have their own private pool
- ❖ Resort caters well for families with on-site kids club and kids pool

Includes breakfast daily.

Location: On the tranquil northern tip of Phi Phi Don on Laem Tong Beach known for its calm waters and serene atmosphere. Distances: Beachfront.

Getting There: 1 hour shared land transfer from Phuket Airport to Royal Phuket Marina, then 1 hour speedboat transfer. **\$129*** per adult one way. Child price on application.

Property Features: Pools (3 – including kids pool), Restaurants (2), Bar, Room service, Day spa, Fitness centre, Kids club 3-12 years, Dive centre, On-site nurse, 62 rooms.

Room Features: Air-conditioning, Balcony, Mini bar, Tea/coffee making facilities, Flat screen TV, Bathrobes, Hair dryer, Safe.

Max Capacity: Superior Garden – 2, Deluxe Garden Suite/Family Garden Suite/ Beachfront Pool Suite – 3 adults or 2 adults/2 children, Hill Top Pool Villa – 4.



FREE



Beachfront Pool Suite – Artist Impression



SAILI PHI PHI ISLAND VILLAGE



Deluxe Garden Bungalow

49 Moo 8, Tumboon, Ao Nang, Phi Phi Island
MAP PAGE 36

From **\$370***

- ❖ Set on 800 metres of white sandy beach with Thai style bungalows and villas
- ❖ Eco-accredited retreat with marine life conservation centre
- ❖ Enjoy excursions and diving in world-renowned Phi Phi National Park

Includes full buffet breakfast daily.

Location: Set on 70 acres of coconut palms, tropical gardens and its own secluded beach on Loh Ba Gao in the Andaman Sea. Distances: Ton Sai Bay Pier 7km, Beachfront.

Getting There: 40 minute shared van transfer from Phuket Airport to Royal Phuket Marina, then 75 minute speedboat transfer. **\$123*** per adult one way. Child price on application.

Property Features: Pools (2), Spa, Restaurants (4), Bars (3), Room service, Coffee shop, Day spa, Gym, Tennis courts, Use of kayaks, Resort shop, Laundry service, 201 rooms.

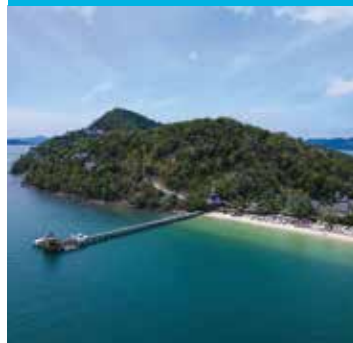
Room Features: Air-conditioning, Balcony or terrace, Tea/coffee making facilities, Mini bar, Satellite TV, Hair dryer.

Max Capacity: Deluxe Garden Bungalow/Deluxe Garden Villa/Deluxe Sea View Villa – 3, Beachfront Junior Suite/Deluxe Premium Villa/Deluxe Sea View Bungalow/Oceanview Hillside Pool Villa – 3 adults or 2 adults/2 children.



FREE

SANTHIYA KOH YAO YAI RESORT & SPA



Supreme Deluxe Sea View

88 Moo 7, Phunai, Koh Yao, Phang Nga
MAP PAGE 36

From **\$259***

- ❖ Quiet and peaceful retreat on the longest beach, Lo Pared in Koh Yao
- ❖ Seven restaurants and bars ensure plenty of dining options
- ❖ Villas offer panoramic sea views and saltwater pools

Includes full buffet breakfast daily and THB1000 resort credit per night.

Location: On Loh Lopareh Beach. Distances: Beachfront.

Getting There: 30 minute shared van transfer from Phuket Airport to Ao Po Grand Marina, then 20 minute speedboat transfer. **\$56*** per adult one way. Child price on application.

Property Features: Pools (2), Spa, Restaurants (7), Bars (3), Limited room service, Day spa, Gym, Children's playground, 24 hour reception, 226 rooms.

Room Features: Air-conditioning, Balcony, Tea/coffee making facilities, Mini bar, Cable TV, Ironing facilities, Hair dryer, Bathrobes, Safe.

Max Capacity: Supreme Deluxe Bay View/Supreme Deluxe Sea View/Ocean View Pool Villa/Seawater Pool Villa – 3 adults or 2 adults/2 children, Two Bedroom Sea Water Pool Villa/Royal Grand Pool Villa – 6 adults or 4 adults/4 children.



FREE

KRABI

Only an hour's flight from Bangkok, Krabi is renowned for its stunning natural beauty, soft sandy beaches, tropical forests, thermal hot springs and soaring limestone cliffs. Krabi is less crowded than Phuket and more laid-back than Koh Samui. Whether you're snorkelling among the colourful sea life, exploring caves by kayak or strolling through the night markets, Krabi is truly magical.

SEE

- Take in the tranquillity of a hidden lagoon inside one of the limestone caves near Railay Beach
- View the famous vividly coloured Emerald and Blue Pools in the Thung Teao Forest National Park

DO

- Bathe in the ancient, thermal, mineral rich waters of Klong Thom Hot Springs

EAT & DRINK

- Sip a speciality cocktail at The Hilltop with its spectacular views over Nopparat Thara Bay

PRIVATE TRANSFERS

Krabi Airport to/from Ao Nang one way without guide (24km): By private car (1 to 2 People): **\$75*** per vehicle, (3 to 6 People): **\$75*** per vehicle.

Krabi Airport to/from Tubkaek one way without guide (44km): By private car (1 to 2 People): **\$104*** per vehicle, (3 to 6 People): **\$104*** per vehicle.

Shared coach transfers are also available.



Railay Beach, Krabi



Koh Gai, Krabi

REF.	HOTELS	PAGE
1	Amari Vogue Krabi	38
2	Centara Ao Nang Beach Resort and Spa	38

CENTARA AO NANG BEACH RESORT AND SPA

981 Moo 2, Tambon Ao Nang, Amphur Muang, Krabi
MAP PAGE 38

From **\$216***

- ❖ Absolute beachfront resort with great views from pool and Sands Beach Club
 - ❖ Wide range of accommodation options to suit couples and families of all sizes
 - ❖ Impressive free-form swimming pool with waterslides for young and old
- Includes full buffet breakfast daily.**

Location: Nestled at the quieter end of Ao Nang Beach, just a short stroll from local eateries and bars. Distances: Krabi Airport 28km, Beachfront.

Property Features: Pools (3 – including children's), Spa, Restaurants (3), Bars (2), 24 hour room service, Kids club 4-12 years (free), Day spa, Gym, Sauna, Laundry service, Resort shop, 179 rooms.

Room Features: Air-conditioning, Balcony or terrace, Tea/coffee making facilities, Mini bar, Cable TV, Hair dryer, Safe.

Max Capacity: Deluxe/Deluxe Pool Access/Premium Deluxe/Premium Deluxe Pool Terrace – 3 adults or 2 adults/2 children, Family Residence – 2 adults/2 children.



AMARI VOGUE KRABI

149 Moo 3, Nong Talay, Mueang Krabi, Krabi
MAP PAGE 38

From **\$265***

- ❖ Boutique beachfront resort offering a private and tranquil retreat for couples
 - ❖ Sip handcrafted cocktails and enjoy stunning sunset views at Sun and Soul Bar
 - ❖ Experience a curated blend of wellness, water activities, and tropical leisure
- Includes breakfast daily.**

Location: Nestled at the northern end of Tubkaek Beach, surrounded by lush tropical gardens and dramatic limestone cliffs, with breathtaking views of the Andaman Sea. Distances: Krabi Airport 36km, Beachfront.

Property Features: Pools (3), Spa, Restaurants (2), Bar, Coffee shop, Room service, Day spa, 24 hour gym, Cooking class, Laundry service, Bicycle rental, Resort activities, 64 rooms.

Room Features: Private Pool (Pool Villa), Air-conditioning, Balcony or terrace, Tea/coffee making facilities, Mini bar, Smart TV, Hair dryer, Safe.

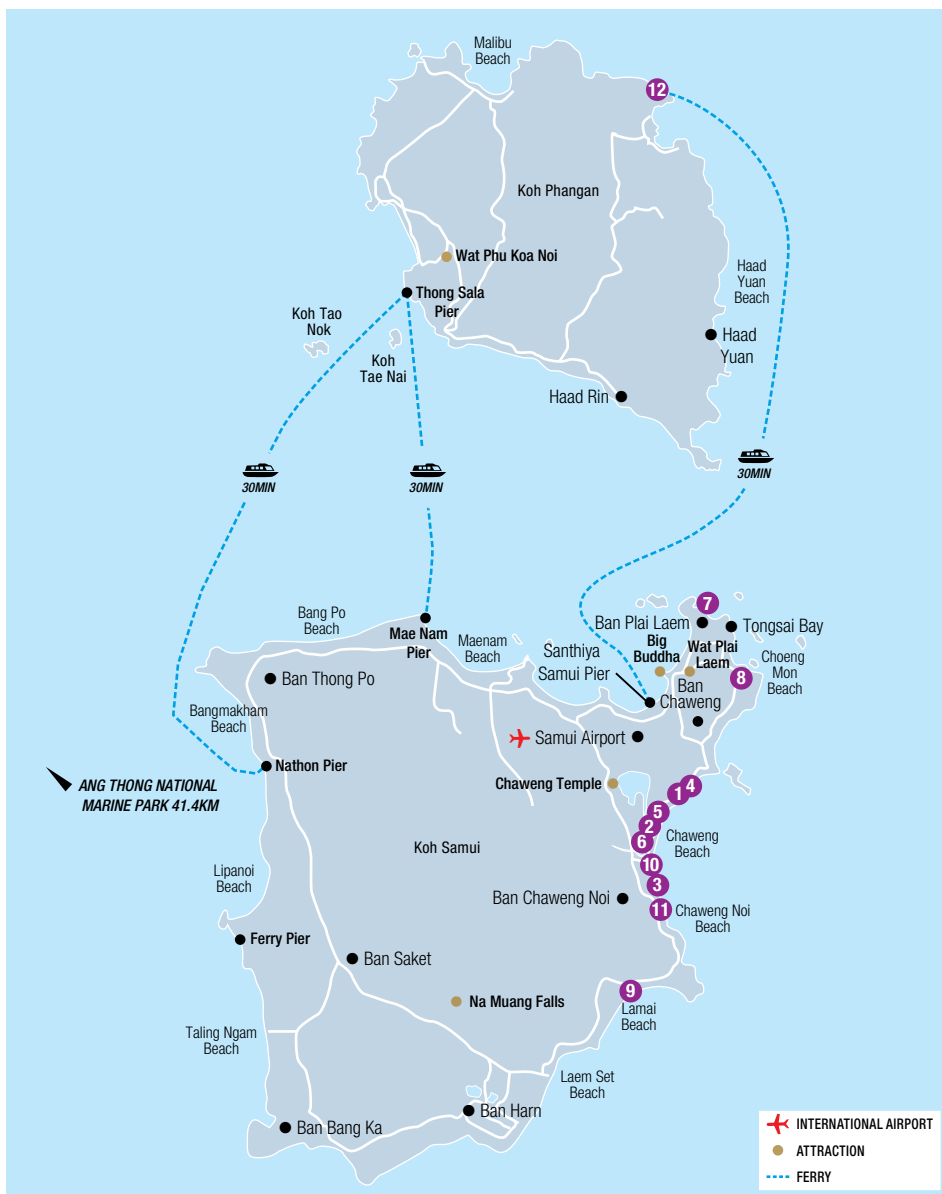
Max Capacity: Superior/Deluxe/Grand Deluxe/Grand Deluxe Premium/One Bedroom Pool Villa – 3, Two Bedroom Pool Villa – 5.



* FROM PRICES ARE A GUIDE ONLY, subject to change and availability and are in Australian Dollars. Unless otherwise specified, prices for day tours and transfers are per person and prices for accommodation are per room per night for 2 people based on the lowest room category. All prices based on travel in low season. For full terms and conditions, refer to the Booking Conditions on the inside back cover of this brochure.



Centara Reserve Samui



KOH SAMUI & KOH PHANGAN

A tropical haven, Koh Samui is known for turquoise waters, white sands, swaying palms, fresh seafood, vibrant markets, and lively nightlife—perfect for lazy hammock days and starlit island nights. Home to the iconic Chaweng Beach, the island also boasts luxurious resorts and serene wellness retreats, making it an ideal destination for relaxation and rejuvenation.

Koh Phangan is a lush island of rainforest and coral reefs, famed for its monthly Full Moon beach parties. It offers a perfect blend of natural serenity and festive island vibes.

SEE

- Visit Wat Plai Laem on Koh Samui with its imposing 18 arm statue of Guanyin and the laughing Buddha

DO

- Head to Fisherman's Village on Koh Samui on a Friday evening and browse the market stalls
- Dive at Sail Rock on Koh Phangan, abundant with colourful sea life

EAT & DRINK

- Savour a banana or roti pancake with various flavours from a local street cart on Koh Samui
- Be spoilt for food choices at the Thong Sala Night Food Market, Koh Phangan

WHAT'S ON

Full Moon Party, Koh Phangan

Monthly on the full moon of the lunar calendar

PRIVATE TRANSFERS

Koh Samui Airport to/from Koh Samui downtown one way without guide (7km): By private car (1 to 2 People): **\$63*** per vehicle, (3 to 6 People): **\$63*** per vehicle. **Shared coach transfers are also available.**

REF.	HOTELS	PAGE
1	Amari Koh Samui	41
2	Baan Samui Resort	40
3	Centara Reserve Samui	42
4	Chaba Cabana Beach Resort	41
5	Chaweng Regent Beach Resort	42
6	Matcha Samui Resort	40

REF.	HOTELS	PAGE
7	Melati Beach Resort & Spa	43
8	Melia Koh Samui	43
9	Outrigger Koh Samui Beach Resort	44
10	OZO Chaweng Samui	41
11	Sheraton Samui Resort	44
12	Santhiya Koh Phangan Resort & Spa	44

*PRICES ARE A GUIDE ONLY, subject to change and availability and are in Australian Dollars. For full terms and conditions, refer to the Booking Conditions on the inside back cover of this brochure.

KOH SAMUI TOURS & ACCOMMODATION



PRIVATE SAMUI ISLAND TOUR

To get the true feel of Koh Samui this tour is a must. See the key highlights and attractions that Koh Samui offers as well as the many beautiful beaches. Visit the Grandfather and Grandmother Rocks, a natural rock formation that will raise an eyebrow, see the Big Buddha, standing 12 metres tall, and marvel at the spectacular views of the island's natural wilderness at Na Muang Waterfall.

Includes:

- Expert local guide
- Transport by air-conditioned vehicle
- Return transfers from selected Koh Samui accommodation

Duration: 4 hours

Departs: Daily from Koh Samui at 9am

	2 People	3 to 5 People
Sightseeing Tour	\$177*	\$127*



ANG THONG SNORKELLING & KAYAKING BY SPEEDBOAT

The 42 islands of Ang Thong National Marine Park are dotted with sandy beaches, limestone cliffs, caves and secluded bays. Cruise to Ko Wao – one of the shallow water coral reefs in the park. Visit Emerald Lake at Ko Mae Ko and Koh Sam Sao for a kayaking adventure. Enjoy lunch at Koh Phaluai and the view at Wua Ta Lub before heading back to Koh Samui.

Includes:

- Speedboat to Ang Thong National Marine Park
- Lunch • Snorkelling equipment • Expert guide
- Return transfers from selected Koh Samui accommodation

Duration: 8 hours

Departs: Daily from Koh Samui at 8:30am

	Adult	Child 3-11 yrs
Sightseeing Tour	\$175*^	\$126*^

^Price includes national park admission fee of THB300 per adult and THB150 per child to be paid directly to the operator by you.



KOH TAO & KOH NANG YUAN SNORKELLING TOUR

Travel by speedboat to the island beaches where you can spend your day swimming, snorkelling or sunbathing on white sand. Enjoy the crystal-clear waters and snorkel to see the abundant marine life and vibrant coral reefs.

Includes:

- Use of snorkelling equipment
- Lunch
- Expert guide
- Return transfers from selected Koh Samui accommodation

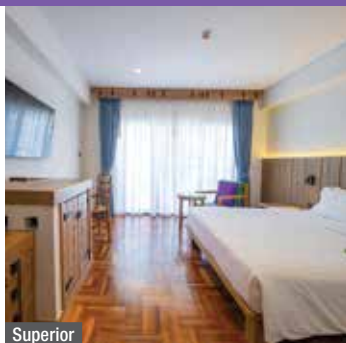
Duration: 8 hours

Departs: Daily from Koh Samui at 7:30am

	Adult	Child 3-11 yrs
Sightseeing Tour	\$171*^	\$120*^

^Price includes national park admission fee of THB300 per adult and THB150 per child to be paid directly to the operator by you.

BAAN SAMUI RESORT



Superior

14/7 Moo 2, Chaweng Beach, Koh Samui

MAP PAGE 39

From **\$222***

- ❖ Close to the shopping, restaurant and bar district
- ❖ Combines Thai-style architecture with vibrant decor and mosaic tiles
- ❖ Moon Dance Restaurant offers open-air dining with sea breezes

Includes full buffet breakfast daily and welcome drink on arrival.

Location: On a white sandy beach in the centre of popular Chaweng. Distances: Koh Samui Airport 7km, Beachfront.

Property Features: Pool (including children's), Restaurant, Bar, Room service, Laundry/dry cleaning service, Lift, 24 hour reception, 79 rooms.

Room Features: Air-conditioning, Balcony or terrace, Tea/coffee making facilities, Mini bar, Cable TV, Hair dryer, Bathrobes, Safe.

Max Capacity: Superior/Deluxe/Junior Suite – 3, Family Suite – 6.



MATCHA SAMUI RESORT



Superior Lake Building

19 Chaweng Beach Road, Bo Put, Koh Samui

MAP PAGE 39

From **\$136***

- ❖ Ideally located within walking distance of bars and restaurants
- ❖ Lake Building rooms are across the road from the beach
- ❖ Ocean Building rooms are right on the beach and have private balconies

Includes full breakfast daily and welcome drink on arrival.

Location: In central Chaweng with shopping, dining and nightlife, all at your doorstep. Distances: Koh Samui Airport 3.5km, Beachfront.

Property Features: Pools (2), Restaurant, Bar, Room service, Coffee shop, Gym, Children's playground, Guest laundry, 24 hour reception, 93 rooms.

Room Features: Air-conditioning, Balcony (Ocean Building only), Tea/coffee making facilities, Cable TV, Hair dryer, Bathrobes, Safe.

Max Capacity: Superior Lake Building/Deluxe Ocean Building/Sunrise Suite Ocean Building – 3, Family Room – 3 adults or 2 adults/2 children.



CHABA CABANA BEACH RESORT



Deluxe Building

160 Moo 2, Chaweng Beach Road, Koh Samui
MAP PAGE 39

From **\$167***

- ❖ Modern design with rustic island charm only minutes from the city centre
 - ❖ 150 metres of soft, sandy beachfront
 - ❖ Beach massages, romantic dinners and cooking classes available
- Includes full buffet breakfast daily and welcome drink on arrival.**

Location: Set towards the northern end of Chaweng Beach, and minutes from central Chaweng. Distances: Koh Samui Airport 3km, Beachfront.

Property Features: Thai cooking classes (extra charge), Pool, Restaurant, Bar, Room service, Massage services, Gym, Children's playground, Guest laundry, 24 hour reception, 78 rooms.

Room Features: Air-conditioning, Balcony or terrace, Tea/coffee making facilities, Mini bar, Cable TV, Hair dryer, Bathrobes, Safe.

Max Capacity: Deluxe Building/Deluxe Villa – 3, Family – 2 adults/2 children.



FREE



Family



OZO CHAWENG SAMUI



Superior

11/34 Moo 2 Chaweng Beach Road, Koh Samui
MAP PAGE 39

From **\$247***

- ❖ Convenient location in central Chaweng
 - ❖ Contemporary beachfront resort with a fun, fresh and lively atmosphere
 - ❖ Facilities and accommodation to suit couples and families
- Includes buffet breakfast daily.**

Location: Situated directly on the soft white sands of Chaweng Beach and just a short walk to the vibrant nightlife, shopping and dining. Distances: Koh Samui Airport 3.9km, Beachfront.

Property Features: Pool, Restaurants (3), Bar, Room service, Gym, 24 hour reception, 208 rooms.

Room Features: Air-conditioning, Balcony or terrace, Mini fridge, Tea/coffee making facilities, LED TV, Multimedia connectivity, USB outlets, Hair dryer, Safe.

Max Capacity: Superior/Deluxe/Deluxe Pool/Deluxe Ocean View/Deluxe Beachfront – 2, Deluxe Corner – 3, Superior Family Connecting – 4.



FREE

AMARI KOH SAMUI



Superior Garden View

14/3 Moo 2, Chaweng Beach, Koh Samui
MAP PAGE 39

From **\$324***

- ❖ Rooms and suites are elegantly designed offering large living space
 - ❖ Beachfront location on popular Chaweng Beach
 - ❖ Dining options including the Amaya Food Gallery with different cooking stations
- Includes full buffet breakfast daily.**

Location: Set on Chaweng Beach, overlooking the waters of the Gulf of Thailand. Distances: Koh Samui Airport 3.8km, Beachfront.

Property Features: Pools (3), Restaurants (2), Bar, Café, Kids club 4-12 years (extra charge), Day spa, 24 hour reception, 193 rooms.

Room Features: Air-conditioning, Balcony or terrace, Tea/coffee making facilities, Mini bar, Cable TV, USB outlets, Ironing facilities, Hair dryer, Bathrobes, Safe.

Max Capacity: Superior Garden View/Superior Pool View/Superior Pool Side/Deluxe Pool View/Deluxe Thai Village/Grand Deluxe Ocean View/Junior Suite Beach Wing/Junior Suite Ocean View – 3, Two Bedroom Family Suite Beach Wing/Two Bedroom Family Suite Pool View – 5, Tropical Pool Side Connecting – 6, Deluxe Family Duplex – 2 adults/2 children.



FREE

KOH SAMUI ACCOMMODATION

CHAWENG REGENT BEACH RESORT



Deluxe Regency



Grand Premier Family

155/4 Chaweng Beach, Koh Samui
MAP PAGE 39

From **\$296***

- ❖ Rooms are set in low-rise buildings and Thai-style village cottages
 - ❖ Families will love the two freshwater pools
 - ❖ Beach pool bar offers happy hour drinks and great views of the sea
- Includes full buffet breakfast daily.**

Location: Beachfront with sweeping views of the Gulf of Thailand and conveniently located to Chaweng's vibrant entertainment, dining and shopping scene. Distances: Koh Samui Airport 2.9km, Beachfront.

Property Features: Pools (2 – including children's), Spa, Restaurant, Bar, Private beach dining (extra charge), Room service, Day spa, Gym, Yoga classes, Kids club 4-11 years (free), Laundry service, 24 hour reception, 155 rooms.

Room Features: Air-conditioning, Balcony or terrace, Outdoor jacuzzi (The Spa Villa Suite), Tea/coffee making facilities, Mini bar, Cable TV, DVD player, Hair dryer, Bathrobes, Safe.

Max Capacity: Deluxe Regency/Deluxe Regency Pool View – 3, Deluxe Villa – 2, Premier – 3 adults or 2 adults/2 children, Grand Premier/Royal Suite/The Spa Villa Suite – 3 adults/1 child, Grand Premier Family – 4 adults or 3 adults/2 children.



FREE



CENTARA RESERVE SAMUI



Deluxe Garden



38/2 Moo 3 Borpud Chaweng Beach, Koh Samui
MAP PAGE 39

From **\$641***

- ❖ Luxury resort set on one of the island's most desirable beaches
- ❖ Picture-perfect pools including free-form beachfront pool with whirlpools
- ❖ Commitment to sustainability

Includes full buffet breakfast daily and mini bar refilled daily including carafes of spirits, local beer, soft drinks, juice and homemade snacks.

Location: Nestled in lush gardens set on the tranquil end of Chaweng Beach. Distances: Koh Samui Airport 4.5km, Beachfront.

Property Features: Pools (2 – including infinity adult only pool), Spa, Restaurants (4), Bars (2), 24 hour room service, Kids club 4-12 years with technology-free zone and wet playground (free), Day spa, 24 hour fitness centre, Yoga pavilion, Laundry service, 184 rooms.

Room Features: Air-conditioning, Balcony or terrace, Private plunge pool (Reserve Pool Suite), Room service 'surprise of the day', Tea/coffee making facilities, Mini bar, Cable TV, Bathrobes and slippers, Hair dryer, Safe.

Max Capacity: Deluxe Garden/Deluxe Ocean – 2, Deluxe Pool Access/Luxury Ocean Reserve Ocean/Reserve Pool Suite – 3.



FREE



* FROM PRICES ARE A GUIDE ONLY, subject to change and availability and are in Australian Dollars. Prices are per room per night for 2 people, unless otherwise specified and based on the lowest room category for travel in low season. For full terms and conditions, refer to the Booking Conditions on the inside back cover of this brochure.

MELATI BEACH RESORT & SPA



Grand Deluxe

9/99 Moo 5, Bophut, Thongsong Bay, Koh Samui
MAP PAGE 39

From **\$351***

- ❖ 15 minute drive to the entertainment precinct of Chaweng Beach
 - ❖ All rooms, except Grand Deluxe, have private pools
 - ❖ Dining choices include private beach dining and private in-villa barbecues
- Includes full buffet breakfast daily.**

Location: On a secluded stretch of beach at Thongsong Bay, in the north of Samui Island. Distances: Koh Samui Airport 5.7km, Beachfront.

Property Features: Thai cooking classes (extra charge), Pools (2 – including children's), Spa, Restaurants (2), Bars (2), Room service, Kids club 3-8 years (free), Day spa, Yoga classes, Gym, Laundry/dry cleaning service, 24 hour reception, Shuttle bus service to Chaweng Beach, 77 rooms.

Room Features: Private pools (except Grand Deluxe), Air-conditioning, Balcony or terrace, Tea/coffee making facilities, Mini bar, Cable TV, DVD player, Hair dryer, Bathrobes, Safe.

Max Capacity: Grand Deluxe/Private Garden Pool/Pool Villa/Pool Villa Suite – 4, Family Pool Villa – 5, Presidential Suite – 7.



FREE



Family Pool Villa



MELIA KOH SAMUI



Deluxe

83 Choeng Mon Beach, Bophut, Koh Samui
MAP PAGE 39

From **\$345***

- ❖ Elegant designer suites surrounded by lush vegetation
 - ❖ THE LEVEL guests receive exclusive privileges such as daily cocktails and canapés
 - ❖ Lagoon style pool wraps around the resort with pool access from select rooms
- Includes full buffet breakfast daily.**

Location: Nestled on tranquil Choeng Mon Beach, a 5 minute drive from Samui International Airport and close to main attractions on the island. Distances: Koh Samui Airport 5km, Beachfront.

Property Features: Pool, Waterslide, Restaurants (2), Bars (3), 24 hour room service, Kids club, Children's play area, 24 hour gym, Day spa, Steam room, Yoga (extra charge), Cooking classes (extra charge), Laundry service, 24 hour reception, 200 rooms.

Room Features: Air-conditioning, Balcony, Tea/coffee making facilities, Mini bar, Satellite TV, USB outlets, Bathrobes, Hair dryer, Safe.

Max Capacity: Deluxe/Premium/THE LEVEL Pool Access – 3, Duplex Boat Suite/ THE LEVEL Boat Suite Seaview – 2, THE LEVEL Grand Suite – 3 adults or 2 adults/ 2 children.



FREE



KOH SAMUI & KOH PHANGAN ACCOMMODATION

SHERATON SAMUI RESORT



Guest



1 Bedroom Suite

86 Chaweng Beach Road, Koh Samui
MAP PAGE 39

From **\$258***

- ❖ Contemporary Mediterranean décor rooms all with a private balcony or terrace
 - ❖ Beachfront pool overlooking the turquoise waters of the Gulf of Siam
 - ❖ Located in peaceful area only a 10 minute drive to the bustling Chaweng Beach
- Includes buffet breakfast daily.**

Location: Tucked into the lush hillside which leads directly onto the peaceful Chaweng Noi Beach. Distances: Koh Samui Airport 6km, Beachfront.

Property Features: Pools (2), Restaurants (3), Bar, 24 hour room service, Kids club 4-12 years, Day spa, 24 hour gym, Tennis court, Laundry service, 141 rooms.

Room Features: Air-conditioning, Balcony, Tea/coffee making facilities, Mini bar, Cable TV, USB outlets, Bathrobes, Hair dryer, Safe.

Max Capacity: Guest – 2, Larger Guest/Large Terrace Guest/Studio/ 1 Bedroom Suite – 3, Family – 4, 2 Bedroom Family Suite – 6.



OUTRIGGER KOH SAMUI BEACH RESORT



Superior Balcony

173, 41 Rob Koh Road, Maret, Ko Samui, Surat Thani
MAP PAGE 39

From **\$197***

- ❖ Beachfront and resort-side pools including a kids water slide
 - ❖ Experiences including elephant sanctuary and Laser Tag activity
 - ❖ Spacious accommodation designed for couples and families alike
- Includes full buffet breakfast daily.**

Location: Set back on the shores of Lamai Beach and nestled within a peaceful enclave of coconut trees and just steps away to the island's best shopping and dining experiences. Distances: Koh Samui Airport 11.2km, Beachfront.

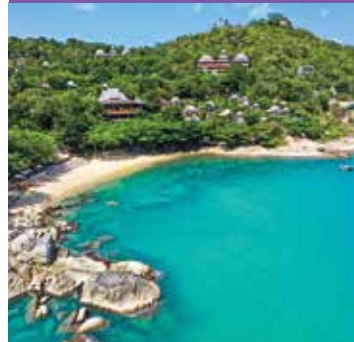
Property Features: Pools (5), Restaurants (2), Bar, Room service, 24 hour reception, Massage sala, Fitness centre, Kids club, Games room, Use of non-motorised watersports (free), Laundry/dry cleaning service, 146 rooms.

Room Features: Air-conditioning, Balcony/terrace, Tea/coffee making facilities, Mini bar, Flat screen TV, USB outlets, Ironing facilities, Hair dryer, Bathrobes, Safe.

Max Capacity: Superior Balcony/Superior Pool View Balcony – 2, Club Lamai Suite/Club Garden Terrace – 3 adults or 2 adults/2 children, Family Superior Pool View Balcony – 4.



SANTHIYA KOH PHANGAN RESORT & SPA



Supreme Deluxe

22/7 Moo 5, Bantai, Koh Phangan
MAP PAGE 39

From **\$339***

- ❖ A peaceful hideaway set amidst tropical gardens with private beach
- ❖ Families will love the many daily activities on offer
- ❖ 30 minutes from Koh Samui by speedboat

Includes full buffet breakfast daily and a THB1000 resort credit per night.

Location: On the north east coast of Koh Phangan on Thong Nai Pan Beach. Distances: Beachfront.

Getting There: 15 minute coach transfer from Koh Samui Airport to Samui Pier, then 30 minute speedboat transfer. **\$61*** per adult one way. Child price on application.

Property Features: Daily activities program, Pools (2), Restaurants (3), Bars (3), Limited room service, Day spa, Gym, Yoga classes, Kayaks/paddleboards (30 mins free), 126 rooms.

Room Features: Air-conditioning, Balcony or terrace, Tea/coffee making facilities, Mini bar, Hair dryer, Safe.

Max Capacity: Supreme Deluxe/Supreme Deluxe Pool Access/Hideaway Pool Villa/ Sea View Pool Villa – 3 adults or 2 adults/2 children. Other room type also available.





Wat Pra Singh



Wat Phan Tao

REF.	HOTELS	PAGE
1	Dusit Princess Chiang Mai	47
2	InterContinental Chiang Mai The Mae Ping	47
3	Melia Chiang Mai	47



CHIANG MAI

Nestled among misty mountains, Chiang Mai is a city where tradition meets modern charm. Explore ancient temples, wander the historic Old City walls and savor the distinctive flavours of Northern Thai cuisine. From bustling night bazaars to serene cultural landmarks, Chiang Mai has something for everyone.

SEE

- View the gold plated Chedi at Wat Phra That Doi Suthep, Chiang Mai, one of Thailand's holiest Buddhists sites

DO

- Visit a hilltribe for an insight into a simpler way of life consisting of culture, dress and traditions
- Stroll through Tha Pae Walking Street on a Sunday and pick up a bargain on clothes and souvenirs

EAT & DRINK

- Haven for coffee lovers, explore the vibrant café scene in trendy Nimman or Old Town for a hot or cold brew

PRIVATE TRANSFERS

Chiang Mai Airport to/from downtown Chiang Mai one way without guide (7km): By private car (1 to 2 People): **\$51*** per vehicle, (3 to 6 People): **\$61*** per vehicle.

Shared coach transfers are also available.



CHIANG MAI CITY & TEMPLES TOUR

The city of Chiang Mai has a wealth of beautiful and historic Buddhist Wats (temples). Visit the most fascinating, Wat Phra That Doi Suthep, a 600 year old temple and climb the 306 steps at Mythological Nagas (dragon-headed serpent) staircase. Enjoy the views of Chiang Mai from the temple grounds and explore Wat Suan Dok and Wat Chedi Luang.

Includes:

- Expert guide
- Transport by air-conditioned vehicle
- Return transfers from Chiang Mai accommodation

Duration: 3 hours 30 minutes

Departs: Daily from Chiang Mai at 8:30am or 1:30pm

	Adult	Child 3-11 yrs
Sightseeing Tour	\$69*[^]	\$44*[^]
[^]Minimum 2 people.		



WAT DOI SUTHEP & WHITE MEO HILLTRIBE TOUR

Head up to the mountains of Doi Suthep Pui National Park and visit the village of the White Meo Hilltribe. Explore the Wat Doi Suthep temple, the most sacred temple in the north, and see the holy relic of Lord Buddha.

Includes:

- Doi Suthep Pui National Park
- White Meo Hilltribe
- All admission fees
- Transport by air-conditioned vehicle
- Return transfers from Chiang Mai accommodation

Duration: 4 hours 30 minutes

Departs: Daily from Chiang Mai at 8:30am or 1:30pm

	Adult	Child 3-11 yrs
Sightseeing Tour	\$126*[^]	\$63*[^]
[^]Minimum 2 people.		



PRIVATE CHIANG RAI & GOLDEN TRIANGLE TOUR

Travel through beautiful scenery en route to Chiang Rai. Stop at the hot springs at Maekajan before visiting Wat Rongkhun, the White Chapel. Visit Baan Dam Museum, a private art museum comprising traditional northern Thai buildings with unconventional and contemporary architecture. Enjoy lunch at a local restaurant before continuing to the Golden Triangle. See the magnificent views over the Mae Khong River where the borders of Thailand, Myanmar and Laos meet.

Includes:

- Lunch
- Expert guide
- Transport by air-conditioned vehicle
- Return transfers from Chiang Mai accommodation

Duration: 12 hours

Departs: Daily from Chiang Mai at 7am

	2 People	3 to 5 People
Sightseeing Tour	\$379*	\$284*

*PRICES ARE A GUIDE ONLY, subject to change and availability and are in Australian Dollars. Prices are per person, unless otherwise specified and based on travel in low season. For full terms and conditions, refer to the Booking Conditions on the inside back cover of this brochure.

THE BUSH CAMP

Nestled along the serene banks of the Ping River, away from Chiang Mai's hustle and bustle is this unique retreat – The Bush Camp. Surrounded by lush greenery and mist-kissed mountains, the camp features 20 bespoke luxury tents inspired by African safari-style accommodations and offers a unique blend of ethical wildlife encounters, immersive cultural interactions, and a strong commitment to sustainability.

During your stay, you will have the unique opportunity to join activities including the popular chain free, hands-off elephant experience at the onsite Elephant Park. There will also be time to relax by the infinity pool as you admire the views over the magnificent Ping River and the Chedi's temples nestled in the lush green mountains.



BUSH CAMP SAFARI

1 NIGHT

Travel to The Bush Camp in Chiang Mai for a two day adventure. The Bush Camp offers an up-close experience with these gentle giants. You will have the opportunity to feed and interact with Asia's largest land animal. Stay in a luxurious tent for an experience that you will never forget.

INCLUDES

- 1 night tented accommodation with private facilities
- 1 breakfast, 2 lunches, 1 dinner
- Sundowner snacks and drinks at a mountain top viewpoint
- Elephant and Mahout experience
- English speaking expert guide
- Return scheduled transfers from Chiang Mai accommodation

TRAVEL TYPE Independent

DEPARTS Daily from Chiang Mai at 7:30am

From **\$624*** per person twin share

Children's prices from 4-15 yrs on application. Not suitable for children under 4 yrs.



BUSH CAMP SAFARI

2 NIGHTS

Assist with feeding of the majestic elephants at The Bush Camp and learn about the life and traditions of the local mahouts. Watch the elephants enjoy their morning wash and learn more about activities at the camp. Visit Elephant Valley to see more of our elephants roaming free. There is also time to relax by the pool or simply kick back and rest on your balcony.

INCLUDES

- 2 nights tented accommodation with private facilities
- 2 breakfasts, 3 lunches, 2 dinners
- Sundowner snacks and drinks at a mountain top viewpoint
- Elephant and Mahout experience
- Visit Elephant Valley
- English speaking expert guide
- Return scheduled transfers from Chiang Mai accommodation

TRAVEL TYPE Independent

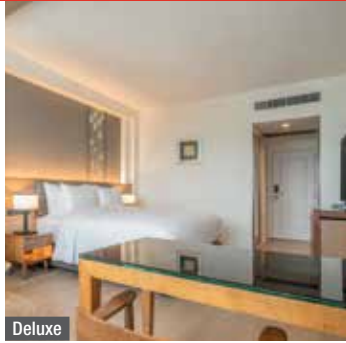
DEPARTS Daily from Chiang Mai at 7:30am

From **\$920*** per person twin share

Children's prices from 4-15 yrs on application. Not suitable for children under 4 yrs.

* FROM PRICES ARE A GUIDE ONLY, subject to change and availability and are in Australian Dollars. Prices are per room per night for 2 people, unless otherwise specified and based on the lowest room category for travel in low season. For full terms and conditions, refer to the Booking Conditions on the inside back cover of this brochure.

DUSIT PRINCESS CHIANG MAI



Deluxe

112 Chang Klan Road, Chiang Mai
MAP PAGE 45

From **\$222***

- ❖ Set in the heart of the city steps away from the Night Bazaar
- ❖ Unwind at the Pool bar with a selection of refreshing drinks
- ❖ Rooms with Thai inspired décor complete with modern amenities

Includes full buffet breakfast daily.

Location: Ideally located in the heart of Chiang Mai walking distance to the famous Night Bazaar markets and many cultural landmarks. Distances: Chiang Mai Airport 6km, Night Bazaar 400m.

Property Features: Pools, Restaurants (2), Bar, gym, Laundry/dry cleaning services, 198 rooms.

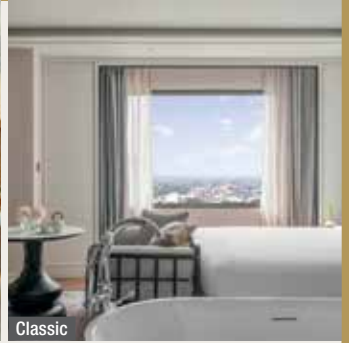
Room Features: Mini bar, Tea and coffee making facilities, Smart TV, USB outlets, Bathrobes, Hair dryer, Safe.

Max Capacity: Deluxe/Premier/1 Bedroom Suite – 3.



FREE

INTERCONTINENTAL CHIANG MAI THE MAE PING



Classic

153 Sridonchai Road Chiang Mai
MAP PAGE 45

From **\$382*^**

- ❖ Relax with a drink and watch the sun set from HONGs Sky Bar
- ❖ Offers an unforgettable culinary journey across three restaurants
- ❖ Guest rooms and suites features the handiwork of local artisans

Includes full buffet breakfast daily.

Location: Only a short drive from Chiang Mai International Airport, the hotel is adjacent to the Wat Chang Kong heritage site in the heart of Chiang Mai. The city's renowned temples, historic sites, and captivating landmarks are easily reached from our location. Distances: Chiang Mai Airport 5km, Night Bazaar 550m.

Property Features: Pool, Restaurants (3), Rooftop bar, 24 hour room service, Day spa, 24 hour reception, 24 hour fitness centre, Laundry/dry cleaning services, 240 rooms.

Room Features: Air-conditioning, Tea/coffee making facilities, Mini bar, Smart TV, Sound system, USB outlets, Universal power outlets, Pillow menu, Hair dryer, Safe.

Max Capacity: Classic/King Classic Mountain View – 2, Premier/Premium Mountain View – 2 adults/1 child.

^ Minimum 2 night stay applies.



FREE

LUXURY

MELIA CHIANG MAI



Melia

46, 48 Charoenprathet Road Chang Khlan, Chiang Mai
MAP PAGE 45

From **\$265***

- ❖ One of the newest properties in Chiang Mai, perfect base to explore the city
- ❖ Resort style outdoor pool with poolside cabanas
- ❖ Mai The Sky Bar – highest rooftop bar in Chiang Mai offering 360-degree views

Includes full buffet breakfast daily.

Location: Conveniently located in central Chiang Mai and walking distance to the night markets. Distances: Chiang Mai Airport 6.2km, Night Bazaar 400m.

Property Features: Pools (2 – including children's), Waterslide, Cabanas, Restaurants (2), Bars (3 – including rooftop), 24 hour room service, Kids club 6-12 years (free), YHI day spa, 24 hour gym, Sauna, Laundry/dry cleaning service, Boutique shop, 260 rooms.

Room Features: Air-conditioning, Tea/coffee making facilities, Mini bar, Cable TV, USB outlets, Universal power outlet, Hair dryer, Safe.

Max Capacity: Melia/Premium/The Level Premium – 3.



FREE



PATTAYA

The closest beach destination to Bangkok, Pattaya offers the perfect blend of relaxation and excitement. Spend your days basking on sun-soaked beaches or enjoying water sports. As evening falls, the city comes alive with vibrant markets, dazzling lights, and world-class entertainment making Pattaya an ideal escape for every traveller.

SEE

- Khao Pattaya View Point is the best place to photograph Pattaya's crescent bay
- View the 'Sanctuary of Truth', A 105 metre tall structure carved completely from teak wood

DO

- Walk up the staircase leading to the 18 metre tall golden Big Buddha, the largest in the region
- Stroll through the immaculate landscaped gardens of Nong Nooch Tropical Gardens

EAT & DRINK

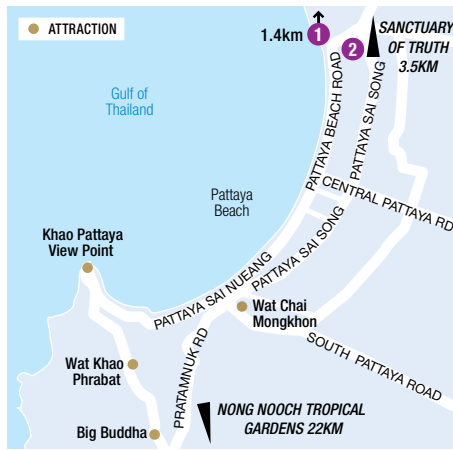
- For superb views and great food visit rooftop restaurant Horizon
- Feast on traditional Thai food at one of Pattaya's many street vendors

PRIVATE TRANSFERS

Bangkok Airport to/from Pattaya one way without guide (125km). By private car (1 to 2 People): **\$181*** per vehicle, (3 to 5 people): **\$220*** per vehicle. **Shared coach transfers are also available.**



Pattaya



Jomtien Beach

REF.	HOTELS	PAGE
1	Centara Grand Mirage Beach Resort Pattaya	48
2	OZO North Pattaya	48

OZO NORTH PATTAYA



Superior

240/43 Pattaya Beach Road, Pattaya
MAP PAGE 48

From **\$138***

- ❖ Value for money property with excellent facilities for couples and families
- ❖ Comfortable modern guest rooms designed to offer a restful night sleep
- ❖ Quality dining options with EAT all day restaurant and THIRST poolside bar

Location: Set in a quieter area of North Pattaya, conveniently across from Terminal 21 and walking distance to the beach. Distances: Pattaya Night Bazaar 2.4km, Beach 300m.

Property Features: Pools (2 – including children's), Waterslide, Restaurant, Bar, Room service, Playground, 24 hour gym, Laundry/dry cleaning service, 24 hour reception, 406 rooms.

Room Features: Air-conditioning, Balcony, Tea/coffee making facilities, Mini fridge, Smart TV, Multimedia hub with USB outlets, Hair dryer, Safe.

Max Capacity: Superior/Deluxe Ocean View – 3, Superior Family – 4.



CENTARA GRAND MIRAGE BEACH RESORT PATTAYA



Deluxe Explorer

277 Moo 5, Banglamung, Pattaya
MAP PAGE 48

From **\$327***

- ❖ Access to onsite The Lost World themed Waterpark and Adventure Land
 - ❖ Safari inspired rooms with private balconies all with ocean views
 - ❖ Diverse dining options with seven restaurants and bars including rooftop bar
- Includes full buffet breakfast daily.**

Location: Situated directly on 230 metres of shoreline on Wong Amat Beach, just a short drive from Pattaya's city centre. Distances: Pattaya Night Bazaar 5km, Beachfront.

Property Features: Amusement park (extra charge), Pools (4 – including lazy river and children's), Waterpark, Restaurants (3), Bars (4 – including rooftop and swim up), 24 hour room service, Kids club, Family lounge, Day spa, Children's day spa, Sauna, 555 rooms.

Room Features: Air-conditioning, Tea/coffee making facilities, Mini fridge, Smart TV, Universal power outlets, USB outlets, Bathrobes, Safe.

Max Capacity: Deluxe Explorer/Premium Explorer/Mirage Premium Explorer – 3 adults or 2 adults/2 children, Mirage Family Suite – 3 adults or 2 adults/3 children. Other room types also available.





Hua Hin

HUA HIN

This royal seaside town is only a few hours from Bangkok and has a charming old world feel mixed with modern facilities. Surrounded by luxurious hotels, resorts and pristine beaches, Hua Hin is the ideal escape for relaxation, rejuvenation and indulgence.

SEE

- Wander the stunning gardens and take in the beautiful sights of Mrigadayavan Palace, by the sea
- Visit King Rama V pavilion in an open-air cave at Tham Phraya Nakhon

DO

- Play a round of golf at the Royal Hua Hin, Thailand's first golf course
- Climb the steps to the enormous statue of the monk, Luang Phor Thuad, at Wat Huay Mongkoi

EAT & DRINK

- Experience the creamiest Thai style ice cream and banana pancakes at the Hua Hin Night Markets
- Tuck into Thai prawn cakes at Oasis, a beachfront restaurant with a stunningly beautiful infinity pool

PRIVATE TRANSFERS

Bangkok Airport to/from Hua Hin one way without guide (222km). By private car (1 to 2 People): **\$237*** per vehicle, (3 to 5 People): **\$275*** per vehicle.

Shared coach transfers are also available.



Tham Phraya Nakhon



REF.	HOTELS	PAGE
1	Centara Grand Beach Resort & Villas Hua Hin	49

CENTARA GRAND BEACH RESORT & VILLAS HUA HIN



Deluxe

1 Damnernkasem Road, Hua Hin
MAP PAGE 49

From **\$339***

- ❖ Stylish iconic hotel first opened in the early 1920s
- ❖ Rooms have wooden floors, high ceilings and furnished balconies
- ❖ Club level rooms provide guests with added benefits

Includes full buffet breakfast daily.

Location: On the beach and only a short stroll to the shops and markets. Distances: City centre 500m, Beachfront.

Property Features: Pools (3), Restaurants (4), Bar, 24 hour room service, Kids club 3-12 years (free), E-Zone 13-17 years (free), Day spa, Gym, Tennis court, Volleyball, Library, 24 hour reception, 251 rooms.

Room Features: Air-conditioning, Balcony or terrace, Tea/coffee making facilities, Mini bar, Cable TV, Hair dryer, Safe.

Max Capacity: Deluxe/Junior Suite/Deluxe Suite/Duplex Suite/Premium Deluxe Ocean View – 3, Premium Deluxe Club/Family/Family Pool Terrace – 3 adults or 2 adults/ 2 children.



*FROM PRICES ARE A GUIDE ONLY, subject to change and availability and are in Australian Dollars. Unless otherwise specified, prices for day tours and transfers are per person and prices for accommodation are per room per night for 2 people based on the lowest room category. All prices based on travel in low season. For full terms and conditions, refer to the Booking Conditions on the inside back cover of this brochure.

ACCOMMODATION INDEX

BANGKOK

Aloft Bangkok Sukhumvit 11	12
Amari Bangkok	12
Banyan Tree Bangkok	13
Capella Bangkok	13
Dusit Thani Bangkok	14
Four Points by Sheraton Bangkok Ploenchit Sukhumvit	12
Lebua Bangkok	13
LiT BANGKOK Hotel & Residence	12
Pathumwan Princess	15
Royal Orchid Sheraton Riverside Hotel Bangkok	15
Shangri-La Bangkok	15

Other Accommodation Options

- Centara Watergate Pavillion Hotel Bangkok
- InterContinental Bangkok Sukhumvit

PHUKET

Amari Phuket	22
Angsana Laguna Phuket	31
Banyan Tree Phuket	31
Beyond Resort Karon	24
Beyond Resort Kata	24
Burasari Phuket	18
Centara Grand Beach Resort Phuket	28
Centara Karon Resort Phuket	25
Centara Kata Resort Phuket	25
Centara Villas Phuket	26
Courtyard Phuket, Patong Beach Resort	19
Diamond Cliff Resort & Spa	22
Four Points by Sheraton Phuket Patong Beach Resort	19
Grand Mercure Phuket Patong	23
Holiday Inn Resort Phuket	20
Holiday Inn Resort Phuket Karon Beach	26
Hotel Indigo Phuket Patong	22

Katathani Phuket Beach Resort	27
The Kee Resort & Spa	21
Le Meridien Phuket Beach Resort	29
Le Meridien Phuket Mai Khao Beach Resort	32
Patong Resort Hotel	19
Phuket Graceland Resort and Spa	21
Phuket Marriott Resort & Spa, Merlin Beach	23
The Shore at Katathani	28
Sunprime Kamala Beach	30
Sunwing Kamala Beach	31
The Vijitt Resort Phuket	32

Other Accommodation Options

- Seaview Patong Hotel • Sunset Beach Resort

KHAO LAK

Khao Lak Merlin Resort	33
Khaolak Laguna	33
Le Meridien Khao Lak Resort & Spa	34
The Little Shore Khao Lak by Katathani	35
Outrigger Khao Lak Beach Resort	34
The Sands Khao Lak by Katathani	34
The Sarojin	35

KOH PHI PHI

Centara Villas Phi Phi Island	36
Outrigger Phi Phi Island Resort	37
SAii Phi Phi Island Village	37

KOH YAO

Santhiya Koh Yao Yai Resort & Spa	37
---	----

KRABI

Amari Vogue Krabi	38
Centara Ao Nang Beach Resort and Spa	38

Other Accommodation Options

- Centara Anda Dhevi Resort & Spa

KOH SAMUI

Amari Koh Samui	41
Baan Samui Resort	40
Centara Reserve Samui	42
Chaba Cabana Beach Resort	41
Chaweng Regent Beach Resort	42
Matcha Samui Resort	40
Melati Beach Resort & Spa	43
Melia Koh Samui	43
Outrigger Koh Samui Beach Resort	44
OZO Chaweng Samui	41
Sheraton Samui Resort	44

Other Accommodation Options

- Bandara Spa Resort & Pool Villa's, Samui
- Nora Beach Resort & Spa • Nora Buri Resort & Spa

KOH PHANGAN

Santhiya Koh Phangan Resort & Spa	44
---	----

CHIANG MAI

Dusit Princess Chiang Mai	47
InterContinental Chiang Mai The Mae Ping	47
Melia Chiang Mai	47

Other Accommodation Options

- Chiang Mai Marriott

PATTAYA

Centara Grand Mirage Beach Resort Pattaya	48
OZO North Pattaya	48

Other Accommodation Options

- Centara Pattaya Hotel • Dusit Thani Pattaya

HUA HIN

Centara Grand Beach Resort & Villas Hua Hin	49
---	----

Other Accommodation Options

- Dusit Thani Hua Hin



Koh Samui

Please read these Booking Conditions carefully as they apply to all bookings with Viva Holidays.

HOW TO BOOK

Contact your ATIA travel agent and request a reservation. All verbal quotes provided are an estimate only and subject to change until confirmed in writing.

PRICES & CONDITIONS

This brochure was produced on 3 December 2025. Unless otherwise stated, prices are in Australian dollars and include GST where applicable. Exchange rates used when pricing this brochure are as at 25 November 2025. All prices are subject to availability, subject to change and can be withdrawn or varied without notice. Prices are to be used as a guide only. Accommodation prices are based on the lowest room category in low season. All other prices are based on travel in low season. Some prices are based on dynamic rates, which means the price may be higher or lower than the advertised price if the price has been varied by the supplier after this brochure was printed. Price changes may occur by reason of matters outside our control which increase the cost of the Product or Service. Such factors include (without limitation) adverse currency fluctuations, fuel surcharges, or increases to taxes. Surcharges and minimum stays may apply due to demand, Christmas and New Year's Eve, school and public holidays, special events and other circumstances. All prices are the lowest available prices at the time of print and are a guide only. Please check all prices, availability, fees, conditions and information with your travel agent before booking.

If we must change any part of your booking for reasons beyond our control, for example, an Accommodation Supplier overbooks accommodation, or if there is an increase in taxes or Supplier charges, we will notify you. If any such changes result in your holiday costing more or otherwise being materially different from that originally booked, you may cancel the booking and we will refund any monies already paid less any charges levied by Suppliers.

PRICES DO NOT INCLUDE

Anything not specifically indicated as being an inclusion.

OMISSIONS & ERRORS

While every effort is made to ensure the accuracy and currency of the information in the brochures, errors or omissions may occur. All errors and omissions identified post the date of publication are notified to our retail partners to advise you. Please check with your agent for all up-to-date corrections, including prices and inclusions.

DEPOSITS & FINAL PAYMENTS

Deposit

A minimum non-refundable deposit of \$55 per person is payable within 7 days of confirmation of your booking. You will be notified at the time of booking if any additional deposit is required. All deposits are non-refundable for changes of mind or cancellations by you (subject to your rights under the Australian Consumer Law).

Final Payment

Final payment of your holiday cost is required no later than 30 days prior to departure or by sale end date or by the payment deadline specified in individual package conditions, whichever is earlier. Some services may require full payment at the time of booking. For bookings made less than 31 days prior to travel, full payment of holiday cost is required at the time your booking is confirmed.

Please ensure payments are made by the due dates. If this does not happen, our system will automatically cancel the booking without notice or liability to you.

Only upon payment of the full cost of your holiday do you have a final booking with the Supplier of the relevant good and/or service. In arranging your booking, Viva Holidays is acting as the agent of the Supplier of the relevant Product and at no time do you have a contract with Viva Holidays.

CREDIT & DEBIT CARD SURCHARGES

A fee will apply for payments made by debit and credit cards. Fees may vary depending on card type. Please check this fee with us or your travel agent when booking.

FEES

Amendment Fees

If you wish to change your booking prior to departure, an amendment fee of \$30 will be charged if the overall value of the booking remains the same or decreases, in addition to any fees imposed by the Supplier of each service booked.

Late Booking Fees

A fee of \$30 will be charged for all bookings made less than 7 days prior to travel.

All fees can be varied without notice.

CANCELLATIONS & REFUNDS

Prior to Final Payment

Your deposit is forfeited.

After Final Payment

There will be no refund of your deposit, in addition to any fees imposed by the Supplier, which may be up to 100% of monies paid.

After Travel

There will be no refund if you cancel your booking once travel has commenced. There will be no refund for unused services, except for OPEN DATED services where the service was not booked with the Supplier. Requests for refunds received more than 6 months after departure date will not be accepted.

Should a refund after departure be approved, a \$110 refund processing fee will apply.

RESPONSIBILITY

Viva Holidays acts as an agent for the Suppliers (transport, tour, event or accommodation providers) who provide the various goods and/or services (Products). All bookings are subject to the terms and conditions and limitations of liability imposed by each Supplier. It is therefore important for you to obtain and read the applicable Supplier's terms and conditions as they may limit or exclude their liability to you.

In producing this brochure, we have used information provided by Suppliers. Irrespective of any measures taken by us to ensure the information contained in this brochure is accurate at the time of printing, Viva Holidays disclaims and will be exempt from liability in respect of anything misleading, false, incomplete or inaccurate and any errors, misdescription and all associated disappointment, loss, expense, damage, inconvenience, delay, death, shock, illness or injury, however caused.

Viva Holidays does not control the manner in which Products featured within this brochure are provided. Viva Holidays disclaims and will be exempt from liability for anything to do with the supply of such Products. This includes liability (whether as a matter of contract, tort, statute, restitution, or otherwise) for any direct, indirect or consequential loss, liability, claim, cost, expense, proceeding, demand, penalty, disappointment, death, injury, illness, shock, inconvenience or delay. This limitation of liability also applies irrespective of the cause, including negligence of us or a Supplier, withdrawal, cancellation or failure to provide a Product, delay, any variation in the Product, the provision of substitute Products or a change in the Supplier. Without limitation, Viva Holidays will not be responsible if the Product is not available due to inclement weather conditions or other acts of God, civil disturbances, fire, floods, acts of Government or any other authorities, accident to or failure of machinery or equipment or industrial action.

MAPS & PHOTOGRAPHS

The maps in this brochure are intended as a guide only and are not to scale. They do not necessarily reflect actual routings or accommodation or attraction locations. Accommodation room photographs are representative only and actual rooms occupied may vary in decor and inclusions from those shown.

Some images used in this brochure are supplied courtesy of tourist bureaus, hotels, tour operators, Arunothai Puttaruksa, Cherdak Yulappaisan, Dimas Frolov Photography, Eak Photographer, Georg Roske, ikorn Photography, Jessi Cotterill, K.Navaraj, Kiattipong Panchee Photography, Kitti Tantibankul, Lit Ma, Muse Photographer, Nick Burrett, Nicolas Voisin, Nuttakit Narata, Oum Studio., Philip Koschel, Pichan Sujritsatit, Ralf Tooten, Sven Ellsworth, Toffy Foto and VRX Studios.

PRODUCT DESCRIPTIONS

Product descriptions and accommodation ratings featured in this brochure are provided by the individual Suppliers. Facilities, features or ratings are subject to change at any time. Tours may not operate on certain dates and durations and departure times are approximate only. You should check at the time of booking for any changes to published information of which we may be aware.

BONDS

Bonds or credit card imprints are required by most Suppliers at the time of check-in to cover incidentals and fees not included in your holiday cost.

TRANSFERS & TOURS

Some Accommodation Suppliers provide courtesy transfers to/from the airport. It is essential that these transfers are pre-booked. Some Tour Suppliers provide complimentary pick up and return to your holiday accommodation and require a minimum number of passengers to operate. If minimum numbers are not achieved tours may be cancelled at short notice. Additionally, some Suppliers reserve the right to cancel departures for other reasons, including bad weather. Some tours and itineraries may also vary and attractions may be substituted due to seasonal conditions. Viva Holidays will not be held liable for a service variation, cancellation, delay or withdrawal, or a Supplier's failure to notify you. A full refund applies for the cancelled tour.

TRAVEL INSURANCE

We strongly recommend you take out appropriate travel insurance to cover your travel arrangements.

INTERNATIONAL TRAVEL

Each passenger is responsible for their own visa, passport (with at least 6 months validity), immigration, quarantine, customs and other requirements of the countries to be visited or transited through. Viva Holidays makes no representations as to the safety, conditions or other issues that may arise at any destination. Travel advice is available from the Australian Government at smartraveller.gov.au.

HEALTH

You must ensure you are aware of any health requirements and recommended precautions relevant to your travel and carry all necessary vaccination documentation with you to the countries to be visited. Failure to present required vaccination documentation may result in you being denied entry into a country. We recommend that you consult with your local doctor, travel medical service or specialist vaccination clinic before commencing your travel. General health advice for all destinations is also available from the Australian Government at smartraveller.gov.au.

PRIVACY

Viva Holidays collects information about you (including health information where necessary) to provide products and services to you, process your travel arrangements, facilitate your participation in loyalty programs and conduct marketing activities and market research. If the information is not provided, Viva Holidays may not be able to provide the Service requested. Viva Holidays may disclose your personal information to its related companies, carriers, travel service providers, organisations which provide services to Viva Holidays (more details are available in our Privacy Statement on our website vivaholidays.com.au) and various law enforcement agencies, airports and governments around the world for security, customs and immigration purposes. You may gain access to the information Viva Holidays holds about you by contacting our Privacy Officer in writing at 179 Normanby Road, South Melbourne VIC 3205 Australia or on privacyofficer@vivaholidays.com.au.

MONIES NOT HELD ON TRUST

All monies paid by you to us will be the property of Viva Holidays and will be a debt due and payable to the relevant Supplier (contingent on availing) once the services to which the money relates have been availed, or the relevant booking is cancelled (subject to cancellation fees). You agree and acknowledge that such monies will not be held by Viva Holidays on trust for or on behalf of you, and we may hold such monies in any account as we see fit, including with our own and/or other customer monies.

GOVERNING LAW

These conditions are governed by the laws of Victoria, Australia and any action arising under them or in any way connected with a booking may be brought only in a court in Victoria, Australia, subject to any law which is expressly inconsistent with this.

You acknowledge that you are 18 years of age or older and that you understand and agree with the above terms and conditions and our Privacy Policy. Please read our full booking terms and conditions at vivaholidays.com.au/policies/booking-conditions.



Bangkok

To book, see your preferred Travel Agent or vivaholidays.com.au for information

YOUR VIVA HOLIDAYS PREFERRED AGENT:

VIVA
HOLIDAYS

Reservations: 1300 872 835 | online.enquiries@vivaholidays.com.au
Travel Agents Reservations: 13 27 87 | reservations@vivaholidays.com.au

