

helloworld
TRAVEL
THE TRAVEL PROFESSIONALS

NEW SOUTH WALES

CANBERRA & NORFOLK ISLAND





EXPERIENCE NEW SOUTH WALES WITH VIVA HOLIDAYS!

Explore sophisticated Sydney, home to iconic landmarks and a buzzing dining and nightlife scene. Indulge in gourmet food and wine in the Hunter Valley, get back to nature in the Blue Mountains and find the perfect golden beach along the coast. Visit Canberra, Australia's capital and discover some of our national treasures. Getaway to a nearby tropical paradise on Norfolk and Lord Howe Islands and learn about their fascinating history and culture.

With over 50 years of experience in the travel business, trust us to make your dream New South Wales holiday a reality.

CHOOSE VIVA HOLIDAYS AND LIVE A LIFE OF TRAVEL.





CONTENTS

Planning Ahead	7
Experiences You'll Love	8
Car Hire	10
Self Drive Holidays	12
Touring	12
Vintage Rail Journeys	13
Sydney	14
Coastal New South Wales	27
Hunter Valley	31
Blue Mountains & Bowral	33
Canberra	36
Norfolk Island	38
Lord Howe Island	41
Accommodation Index	42
Booking Conditions	43

WHY CHOOSE VIVA HOLIDAYS

Viva Holidays has been creating exceptional worldwide holiday experiences for over 50 years. Your arrangements will be managed by our local travel specialists who are experts in designing holidays to perfectly suit your travel needs. You'll always be in experienced hands when you book with Viva Holidays.

MORE CHOICE

Our exclusive product range caters for every type of holiday. Accommodation, car hire, theme parks, attractions, day and extended tours, rail and cruises - we've got it covered.

With incredible deals available throughout the year, make sure you ask your travel agent for our best offers.

EXCEPTIONAL SERVICE

Exceptional customer service is behind everything we do. That's why we were recognised as the Most Outstanding Wholesaler – Product/Service in 2023 and 2024 at the National Travel Industry Awards. Our Australian-based team are passionate about travel and providing outstanding service. Let us do the research, planning and booking to ensure your holiday is one you'll always remember.



PEACE OF MIND

Viva Holidays is a proud member of ATIA Accreditation, the Australian Travel Industry Association's accreditation scheme that sets the benchmark of quality for the travel industry. When you book your holiday with Viva Holidays, you will have peace of mind knowing that you are booking with one of Australia's most trusted travel companies.

24/7 ASSISTANCE

When you book with Viva Holidays, you'll never be on your own. In the event of unforeseen circumstances, our customer care team is available 24 hours a day, seven days a week.

TAILOR MADE HOLIDAYS

Whether it is climbing the Sydney Harbour Bridge, wine tasting in the Hunter Valley or exploring the Blue Mountains, our team of travel specialists can design a custom made itinerary just for you!

Let us create your dream holiday today.

LIVE A LIFE OF TRAVEL. LET VIVA HOLIDAYS TAKE YOU THERE!







• Brisbane ✈

Queensland

• Coolangatta ✈
• Tweed Heads
• Kingscliff

• Byron Bay
• Lennox Head
• Ballina ✈

• Yamba

• Grafton

• Coffs Harbour ✈

NEW SOUTH WALES

Dorrigo National Park

• Tamworth ✈

✈ Port Macquarie

• Gloucester

• Taree

• Forster/Tuncurry

✈ Dubbo

• Mudgee ✈

• Singleton

• Maitland

• Port Stephens

• Cessnock

• Newcastle ✈

• Lake Macquarie

✈ Orange

• Bathurst

• Lithgow

Blue Mountains National Park

• Windsor

• Katoomba

• The Entrance

• Terrigal

• Killcare Heights

• Berowra Waters

• Sydney ✈

✈ TO LORD HOWE ISLAND
2 HRS FLIGHT FROM SYDNEY

✈ TO NORFOLK ISLAND
2 HRS 35 MINS FLIGHT FROM SYDNEY

Southern Highlands

• Bowral

• Wollongong

• Kiama

• Nowra

• Goulburn

• Yass

• Kangaroo Valley

• Ulladulla

• Batemans Bay

Wagga Wagga

✈ Canberra

A.C.T.

Kosciuszko National Park

• Cooma

• Jindabyne

• Thredbo

• Bega

• Tathra

• Merimbula

• Eden

Victoria



PLANNING AHEAD

New South Wales is a wonderful place to visit all year round. Before you begin your next trip, make sure to read our helpful travel information, to ensure you make the most of your time in Sydney and beyond.



Lake Burley Griffin, Canberra

Grant O'Loughlan/Visit Canberra

WHEN TO GO

New South Wales enjoys a sunny climate with mild winters and warm summers, perfect for making the most of the outdoors.

The summer months heat up making it a great time to enjoy the many coastal beaches.

The autumn months are mild bringing cooler temperatures with crisp mornings.

During winter, the weather is frequently cold with frosty nights. A great time to head to the snow fields and hit the slopes.

Spring time sees warmer days and mild nights and is a perfect time to enjoy the many spring festivals.

GETTING AROUND

Take the time to explore and discover as you make your way around New South Wales by road. Discover rugged national parks, beautiful beaches and country towns from the comfort of your rental car. See pages 10 and 11 for car hire options and page 12 for Self Drive Holidays.

WATER SAFETY

Australia has some of the world's best beaches, however care and caution should be exercised at all times. Please remember to swim between the red and yellow flags and listen to instructions from lifesavers and lifeguards.

SCHOOL LEAVERS CELEBRATION

Each year from mid November to mid December, school leavers head to Byron Bay and the North Coast for School Leavers Celebrations. During this period, bonds and special conditions may apply to some properties. Check with your travel agent at time of booking.

TEMPERATURE & RAINFALL

Sydney	J	F	M	A	M	J	J	A	S	O	N	D
Temperature (max °C)	26	26	25	23	20	17	16	18	20	22	24	26
Average rainfall (mm)	116	113	110	121	117	128	80	91	60	79	101	81

Byron Bay	J	F	M	A	M	J	J	A	S	O	N	D
Temperature (max °C)	28	28	27	25	22	20	19	20	22	23	25	26
Average rainfall (mm)	165	189	203	189	181	165	107	91	66	108	120	147

Canberra	J	F	M	A	M	J	J	A	S	O	N	D
Temperature (max °C)	29	28	25	21	16	13	12	13	17	20	23	26
Average rainfall (mm)	54	58	54	53	45	40	41	51	56	65	65	52

Norfolk Island	J	F	M	A	M	J	J	A	S	O	N	D
Temperature (max °C)	24	24	24	22	20	19	18	18	18	20	21	23
Average rainfall (mm)	83	95	107	138	122	160	124	115	102	85	97	88

Lord Howe Island	J	F	M	A	M	J	J	A	S	O	N	D
Temperature (max °C)	23	23	22	21	20	18	17	17	18	18	20	21
Average rainfall (mm)	84	90	108	96	112	115	103	96	87	81	90	91

EXPERIENCES YOU'LL LOVE

The best part of any journey is the experiences you have along the way, leaving you with memories to relive long after the holiday is over.

New South Wales has countless amazing things to see and do. Here are some of our favourites to inspire your wanderlust.





Sydney Harbour

CRUISE THE HARBOUR

Spectacular Sydney Harbour is the epicentre of the city and a cruise is the best way to truly appreciate its beauty. Explore the harbour with a ferry ride to Manly or Taronga Zoo, enjoy a lunch cruise or celebrate a special occasion with a sumptuous sunset dinner cruise. Glide past the Sydney Opera House and beneath the majestic Harbour Bridge for unforgettable views.



Sydney Opera House

SYDNEY'S ICONS

No trip to Sydney is complete without visiting the Sydney Opera House and the Sydney Harbour Bridge. Take in the Opera House's striking architecture on a walk around the foreshore or join a backstage tour for a closer look. Known as 'the coat hanger', the Sydney Harbour Bridge is also a must-see. Join the BridgeClimb for sensational views of the harbour.



Shelly Beach, Manly

BEACH CULTURE

New South Wales is blessed with beautiful beaches. People-watch at famous Bondi Beach, take the little ones to calmer waters at Manly or take a dip in one of 100 iconic ocean pools dotted along the coast. Surfers will love riding the waves at some of the best surf beaches in the country, particularly in Cronulla, Newcastle and Bondi.



Usher Tinkler Wines, Pokolbin

HUNTER VALLEY WINE REGION

Journey to the Hunter Valley wine region and indulge in the fantastic wine that makes this beautiful region famous. Gourmet produce, cheeses, chocolates, craft beers and day spas are the perfect companions to the Hunter Valley's renowned wines. With fresh air, rolling hills and vineyards as far as the eye can see, it is the countryside escape of your dreams.



Thredbo Mountain Bike Park, Snowy Mountains

NATURAL WONDERS

Inland New South Wales boasts awe-inspiring natural sights. Kosciuszko National Park features Australia's highest peak and offers snow sports, hiking and mountain biking, while the Blue Mountains National Park delivers bushwalks, sweeping views and famous landmarks like the Three Sisters, Wentworth Falls and Jenolan Caves.



Norfolk Island

ISLAND LIFE

Discover paradise on Norfolk and Lord Howe Islands. Norfolk Island showcases rich history, culture, and culinary experiences. Wander the beautiful shores of Emily Bay and the convict remains of historic Kingston and Arthur's Vale. A little closer to Australian shores sits Lord Howe Island, a sanctuary of pristine beaches, lush forests, and dramatic volcanic peaks.



AVIS

Why not add Avis to your travel plans and make the most of your holiday by enjoying the flexibility and convenience that an Avis car rental provides.

Situated at all major airports and city locations and offering a wide range of late model vehicles to choose from, all at great rates, renting with Avis is sure to make your holiday escape more enjoyable. All Avis vehicles are air-conditioned and come with Mechanical Breakdown Assistance. Plus you get unlimited kilometres in Metropolitan and Country areas as well as free maps to help you find your destination.

Includes:

- Loss Damage Waiver • Administration Fee
- Vehicle Registration Fee • GST
- Concession Recovery Fee/Premium Location Surcharge
- Excess Reduction (Zero Excess option), at participating locations only
- All vehicles include: air-conditioning, ABS and dual airbags

Car rentals commencing in Metropolitan and Country locations include unlimited kilometres. Rentals commencing in Remote locations include 100 kilometres per day with excess kilometres charged at 27.5c per kilometre.

Does Not Include:

- Excess Reduction (Basic Excess option) • Fuel
- One way rental fees • Tolls
- Products purchased at rental counter

Excess:

An excess of \$5,900* applies to vehicle Groups C, D, S, and K, while Groups W, H, and V carry a standard excess of \$6,500*. To reduce your liability, optional Excess Reduction is available for an additional fee of \$36.90* per day for Groups C, D, S, and K, lowering the excess to \$1,000*, or \$39.21* per day for Groups W, H, and V, reducing the excess to \$1,500*. For complete coverage, a Zero Excess option is also available, eliminating the excess entirely. All prices above include administration fees, credit card surcharges, and GST, and are subject to Avis Rental Terms and Conditions.

Restricted Access:

Vehicles may not be driven above the snow line this includes Jindabyne in New South Wales from the beginning of June until the end of September.

Based on per vehicle per day (24 hour hire period). Minimum age restrictions apply. Restrictions on vehicle hire type apply for drivers under 25 years. A full driver's licence, credit card and security bond is required on collection. Additional driver fees apply. Vehicles are subject to availability and a similar vehicle to those pictured may be substituted. Not all vehicles are available at all locations. Check with your travel agent for details.



Small Suitcase Large Suitcase

TOYOTA COROLLA HATCH (or similar)

GROUP C

- Auto
- 5 door hatch
- 4 cylinder
- USB
- Bluetooth
- Cruise control
- Reversing camera



x 5

DOWNTOWN

AIRPORT

BASIC EXCESS

ZERO EXCESS

1-3 DAYS	4-6 DAYS	7+ DAYS	1-3 DAYS	4-6 DAYS	7+ DAYS
\$88*	\$82*	\$76*	\$120*	\$113*	\$107*

\$110*	\$102*	\$94*	\$142*	\$134*	\$126*
--------	--------	-------	--------	--------	--------

TOYOTA COROLLA SEDAN (or similar)

GROUP D

- Auto
- 5 door sedan
- 4 cylinder
- USB • Bluetooth
- Smart cruise control
- Reversing camera
- Smartphone connectivity



x 5

DOWNTOWN

AIRPORT

BASIC EXCESS

ZERO EXCESS

1-3 DAYS	4-6 DAYS	7+ DAYS	1-3 DAYS	4-6 DAYS	7+ DAYS
\$98*	\$87*	\$84*	\$130*	\$119*	\$116*

\$123*	\$109*	\$105*	\$154*	\$141*	\$137*
--------	--------	--------	--------	--------	--------

TOYOTA CH-R (or similar)

GROUP S

- Auto
- 5 door SUV
- 4 cylinder
- USB • Bluetooth
- Smart cruise control
- Reversing camera
- Smartphone connectivity



x 5

DOWNTOWN

AIRPORT

BASIC EXCESS

ZERO EXCESS

1-3 DAYS	4-6 DAYS	7+ DAYS	1-3 DAYS	4-6 DAYS	7+ DAYS
\$98*	\$87*	\$84*	\$130*	\$119*	\$116*

\$123*	\$109*	\$105*	\$154*	\$141*	\$137*
--------	--------	--------	--------	--------	--------

KIA SPORTAGE (or similar)

GROUP K

- Auto
- 5 door SUV
- 4 cylinder
- USB • Bluetooth
- Smart cruise control
- Reversing camera
- Smartphone connectivity



x 5

DOWNTOWN

AIRPORT

BASIC EXCESS

ZERO EXCESS

1-3 DAYS	4-6 DAYS	7+ DAYS	1-3 DAYS	4-6 DAYS	7+ DAYS
\$107*	\$101*	\$92*	\$138*	\$132*	\$123*

\$134*	\$126*	\$115*	\$165*	\$157*	\$147*
--------	--------	--------	--------	--------	--------

KIA CARNIVAL (or similar)

GROUP V

- Auto
- 5 door SUV
- 4 cylinder
- USB • Bluetooth
- Smart cruise control
- Reversing camera
- Smartphone connectivity



x 8

DOWNTOWN

AIRPORT

BASIC EXCESS

ZERO EXCESS

1-3 DAYS	4-6 DAYS	7+ DAYS	1-3 DAYS	4-6 DAYS	7+ DAYS
\$138*	\$123*	\$118*	\$168*	\$154*	\$149*

\$172*	\$153*	\$147*	\$203*	\$184*	\$178*
--------	--------	--------	--------	--------	--------

TOYOTA KLUGER (or similar)

GROUP H

- Auto
- 5 door SUV
- 4/6 cylinder
- USB • Bluetooth
- Smart cruise control
- Reversing camera
- Smartphone connectivity



x 5

DOWNTOWN

AIRPORT

BASIC EXCESS

ZERO EXCESS

1-3 DAYS	4-6 DAYS	7+ DAYS	1-3 DAYS	4-6 DAYS	7+ DAYS
\$140*	\$135*	\$127*	\$199*	\$194*	\$187*

\$175*	\$168*	\$159*	\$234*	\$228*	\$219*
--------	--------	--------	--------	--------	--------

TOYOTA PRADO (or similar)

GROUP W

- Auto
- 5 door 4WD
- 4/6 cylinder
- Cruise control
- Reversing camera
- Smartphone connectivity



x 7

DOWNTOWN

AIRPORT

BASIC EXCESS

ZERO EXCESS

1-3 DAYS	4-6 DAYS	7+ DAYS	1-3 DAYS	4-6 DAYS	7+ DAYS
\$177*	\$159*	\$152*	\$236*	\$218*	\$211*

\$221*	\$198*	\$190*	\$280*	\$257*	\$249*
--------	--------	--------	--------	--------	--------



BUDGET

Budget Rent a Car is renowned for meticulously maintained vehicles and quality service. Offering a wide range of cars, 4WDs and minivans Budget has the right vehicle choice for your holiday needs.

Budget's car hire fleet is constantly being updated to ensure you enjoy the best in comfort and safety in late model vehicles and at competitive prices. Driving is one of the best ways to see the sights of Australia, and Budget offers customers the convenience of having locations at airports and cities Australia wide so you are never far from a pick-up point or friendly service.

Includes:

- Loss Damage Waiver • Administration Fee
- Vehicle Registration Fee • GST
- Concession Recovery Fee/Premium Location Surcharge
- Excess Reduction (Zero Excess option), at participating locations only
- All vehicles include: air-conditioning, ABS and six airbags

Car rentals commencing in Metropolitan and Country locations include unlimited kilometres. Rentals commencing in Remote locations include 100 kilometres per day with excess kilometres charged at 27.5c per kilometre.

Does Not Include:

- Excess Reduction (Basic Excess option) • Fuel
- One way rental fees • Tolls
- Products purchased at rental counter

Excess:

An excess of \$5,900* applies to vehicle Groups C, D, S, and K, while Groups W, H, and V carry a standard excess of \$6,500*. To reduce your liability, optional Excess Reduction is available for an additional fee of \$36.90* per day for Groups C, D, S, and K, lowering the excess to \$1,000*, or \$39.21* per day for Groups W, H, and V, reducing the excess to \$1,500*. For complete coverage, a Zero Excess option is also available, eliminating the excess entirely. All prices above include administration fees, credit card surcharges, and GST, and are subject to Budget Rental Terms and Conditions.

Restricted Access:

Vehicles may not be driven above the snow line this includes Jindabyne in New South Wales from the beginning of June until the end of September.

Based on per vehicle per day (24 hour hire period). Minimum age restrictions apply. Restrictions on vehicle hire type apply for drivers under 25 years. A full driver's licence, credit card and security bond is required on collection. Additional driver fees apply. Vehicles are subject to availability and a similar vehicle to those pictured may be substituted. Not all vehicles are available at all locations. Check with your travel agent for details.



Small Suitcase Large Suitcase

KIA CERATO S HATCH (or similar)

GROUP C

- Auto
- 5 door hatch
- 4 cylinder
- USB • Bluetooth
- Cruise control
- Reversing camera or sensors



	1-3 DAYS	4-6 DAYS	7+ DAYS	BASIC EXCESS			ZERO EXCESS		
				1	2		1-3 DAYS	4-6 DAYS	7+ DAYS
DOWNTOWN	\$76*	\$71*	\$66*	\$102*	\$96*	\$91*			
AIRPORT	\$95*	\$88*	\$82*	\$121*	\$114*	\$108*			

TOYOTA COROLLA SEDAN (or similar)

GROUP D

- Auto
- 4 door sedan
- 4 cylinder
- USB
- Bluetooth
- Cruise control
- Reversing camera or sensors



	1-3 DAYS	4-6 DAYS	7+ DAYS	BASIC EXCESS			ZERO EXCESS		
				2	1		1-3 DAYS	4-6 DAYS	7+ DAYS
DOWNTOWN	\$85*	\$76*	\$73*	\$110*	\$101*	\$99*			
AIRPORT	\$106*	\$94*	\$91*	\$132*	\$121*	\$117*			

TOYOTA YARIS CROSS (or similar)

GROUP S

- Auto
- 5 door SUV
- 4 cylinder
- USB
- Bluetooth
- Smart cruise control
- Smartphone connectivity



	1-3 DAYS	4-6 DAYS	7+ DAYS	BASIC EXCESS			ZERO EXCESS		
				1	2		1-3 DAYS	4-6 DAYS	7+ DAYS
DOWNTOWN	\$85*	\$76*	\$73*	\$110*	\$101*	\$99*			
AIRPORT	\$106*	\$94*	\$91*	\$132*	\$121*	\$117*			

MITSUBISHI OUTLANDER (or similar)

GROUP K

- Auto • 5 door SUV
- 4 cylinder
- USB • Bluetooth
- Smart cruise control
- Reversing camera or sensors
- Smartphone connectivity



	1-3 DAYS	4-6 DAYS	7+ DAYS	BASIC EXCESS			ZERO EXCESS		
				2	2		1-3 DAYS	4-6 DAYS	7+ DAYS
DOWNTOWN	\$96*	\$90*	\$82*	\$121*	\$116*	\$108*			
AIRPORT	\$120*	\$113*	\$103*	\$145*	\$139*	\$129*			

HYUNDAI STARIA (or similar)

GROUP V

- Auto
- 5 door van
- 4/6 cylinder
- USB
- Bluetooth
- Cruise control
- Reversing camera or sensors



	1-3 DAYS	4-6 DAYS	7+ DAYS	BASIC EXCESS			ZERO EXCESS		
				2	2		1-3 DAYS	4-6 DAYS	7+ DAYS
DOWNTOWN	\$118*	\$106*	\$101*	\$143*	\$131*	\$126*			
AIRPORT	\$148*	\$132*	\$126*	\$173*	\$157*	\$152*			

TOYOTA KLUGER (or similar)

GROUP H

- Auto
- 5 door SUV
- 4/6 cylinder
- USB
- Bluetooth
- Reversing camera or sensors



	1-3 DAYS	4-6 DAYS	7+ DAYS	BASIC EXCESS			ZERO EXCESS		
				2	2		1-3 DAYS	4-6 DAYS	7+ DAYS
DOWNTOWN	\$122*	\$118*	\$111*	\$178*	\$174*	\$168*			
AIRPORT	\$152*	\$147*	\$139*	\$209*	\$204*	\$196*			

FORD EVEREST (or similar)

GROUP W

- Auto
- 5 door 4WD
- 4/6 cylinder
- USB
- Bluetooth



	1-3 DAYS	4-6 DAYS	7+ DAYS	BASIC EXCESS			ZERO EXCESS		
				2	2		1-3 DAYS	4-6 DAYS	7+ DAYS
DOWNTOWN	\$152*	\$137*	\$131*	\$208*	\$193*	\$187*			
AIRPORT	\$190*	\$171*	\$163*	\$246*	\$227*	\$220*			

SELF DRIVE HOLIDAYS & TOURING



Bondi Beach

SYDNEY TO GOLD COAST 10 DAYS

Day 1: Sydney Arrive at Sydney Airport, pick up your rental car, and check into your accommodation near Bondi Beach. Spend the afternoon at Bondi. Overnight at Adina Apartment Hotel Bondi Beach.

Day 2: Sydney to Nelson Bay – 214km Depart Sydney for a scenic three-hour drive to Nelson Bay. Check into your hotel, then explore the coastal town or relax at Shoal Bay for a laid-back afternoon. Spend the next two nights at Mantra Nelson Bay.

Day 3: Nelson Bay Spend the day exploring Nelson Bay and its surrounds. Hike to the summit of Tomaree Mountain for sweeping coastal views, relax on beautiful beaches, and take a dolphin-spotting cruise (own expense) to see these majestic creatures.

Day 4: Nelson Bay to Port Macquarie – 248km Drive three and a half hours north to Port Macquarie, stopping in Forster for a relaxed lunch. On arrival, visit the Koala Hospital (own expense) or take a scenic coastal walk, then watch the sunset at Town Beach and enjoy dinner in town. Overnight at Sails Port Macquarie by Rydges.

Day 5: Port Macquarie to Yamba – 285km Drive to the seaside town of Yamba, with the option to pause along the way for scenic views. Spend the afternoon at the beach and finish with a relaxed dinner in town. Spend the next two nights at Angourie Resort Yamba.

Day 6: Yamba

Spend the day exploring Angourie. Start at the Blue Pools for a refreshing swim, then choose to wander the coastline or visit Angourie Point for stunning views. In the afternoon, relax on Pippi Beach or another quiet stretch of sand before returning to Yamba for dinner.

Day 7: Yamba to Byron Bay – 127km Drive 90 minutes to Byron Bay. Spend the afternoon soaking up the sun at Wategos Beach, then head to Cape Byron Lighthouse for one of the east coast's most spectacular sunsets. Spend the next two nights at Crystalbrook Byron.

Day 8: Byron Bay Enjoy a full day in Byron Bay. Start with breakfast at a lively café, then choose your morning activity, perhaps a surf lesson at The Pass or browsing boutique stores. Later, take the lighthouse loop walk for stunning views, and end the day with dinner in town and a sunset stroll along Main Beach.

Day 9: Byron Bay to Surfers Paradise – 93km Drive an hour to Surfers Paradise, once there, stroll the famous beachfront then enjoy dinner at one of the many coastal restaurants. Overnight at Crowne Plaza Surfers Paradise.

Day 10: Surfers Paradise Spend your last morning in Surfers Paradise, before returning your hire car on arrival at Gold Coast airport.

From **\$1894*** per person twin share

10 DAYS | SYDNEY TO GOLD COAST

TRAVEL TYPE: Self drive

DEPARTS: Wed – Sat

HIGHLIGHTS

- Take in the sunset at iconic Bondi Beach
- Walk to the summit of Tomaree Mountain for incredible coastal views
- Visit the Koala hospital in Port Macquarie (own expense)
- Swim in the natural Angourie Blue Pools in Yamba
- Walk the famous lighthouse loop in Byron Bay

INCLUDES

- 9 nights accommodation
- 6 days Group C car rental with Budget+

*Based on pickup from airport depot.



Cape Byron Lighthouse, Byron Bay

SYDNEY TO BRISBANE 8 DAYS

Day 1: Sydney (D)

Starting in Australia's Harbour City, check into your room, then meet your tour leader and new travel mates. Enjoy a dinner afterwards. Overnight at Holiday Inn Potts Point or similar.

Day 2: Sydney to Newcastle (B)

Leave Sydney for Newcastle, with a stop off in the beautiful wine region of the Hunter Valley at a Wildlife Park and a wine, cheese and chocolate tasting. Overnight at Lucky Hotel Newcastle or similar.

Day 3: Newcastle to Port Macquarie (B)

After breakfast head to Port Macquarie and experience the Port Macquarie Koala Hospital. Overnight at El Paso Motor Inn or similar.

Day 4: Port Macquarie to Byron Bay (B)

Connect with Gumbaynggirr culture, then soak up Byron Bay's surf vibes and visit Cape Byron for epic views and marine life spotting. Spend the next two nights at Beachcomber Byron Bay or similar.

Day 5: Byron Bay

Enjoy a free day in Byron Bay – relax on the beach, browse boutiques, or choose optional adventures like surfing, kayaking with dolphins, whale watching, or a hot air balloon ride.

Day 6: Byron Bay to Rainbow Beach (B)

Cross into Queensland and explore laid-back Noosa and its national park before settling in for two nights at Rainbow Getaway Apartments or similar.

Day 7: Rainbow Beach (BL)

Gear up for a once-in-a-lifetime 4WD adventure on K'gari (formerly Fraser Island), the Butchulla nation's 'paradise' – and you'll soon see why.

Day 8: Rainbow Beach to Brisbane (B)

Welcome to Bris-Vegas – Queensland's sunny, buzzing capital and future home of the Summer Olympics!

(B = breakfast, L = lunch, D = dinner)

From **\$4585*** per person twin share



8 DAYS | SYDNEY TO BRISBANE

OPERATOR: Autopia Tours

TRAVEL TYPE: Escorted coach

DEPARTS: 19 Apr, 17 May, 14 Jun, 12 Jul, 9 Aug, 6, 20 Sep, 4, 18 Oct, 1, 15 Nov, 6, 20, 27 Dec 26, 10, 24 Jan, 7, 21 Feb, 7, 21 Mar 27

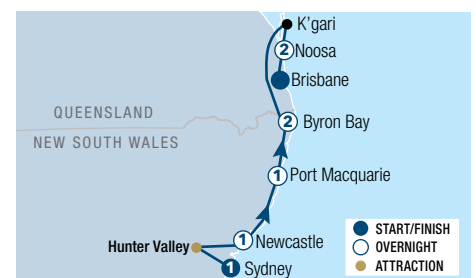
HIGHLIGHTS

- Boutique touring – curated for comfort
- Hosted by experienced driver guide

INCLUDES

- 7 nights private boutique style hotels/resorts
- Meals as specified
- Wine, cheese and chocolate tasting
- All National Park entry fees
- First Nations cultural experience
- Australian wildlife rescue centre
- K'gari 4WD small-group experience
- Guided rainforest, beach and lookout walks
- Experienced driver-guide with local tour commentary

Not suitable for children under 12 yrs.



*FROM PRICES ARE A GUIDE ONLY, subject to change and availability and are in Australian Dollars. Prices are per person twin share, unless otherwise specified and based on the lowest room category and travel in low season. For full terms and conditions, refer to the Booking Conditions on the inside back cover of this brochure.

VINTAGE RAIL JOURNEYS

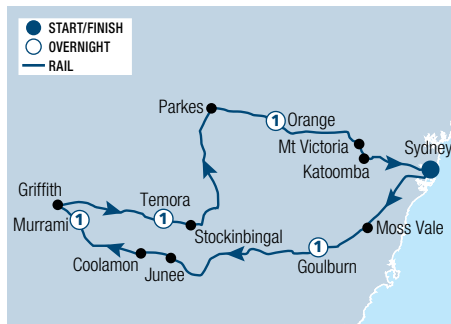
Immerse yourself in an all-inclusive, nostalgic journey through regional New South Wales, travelling in style aboard the restored 1960s 'Southern Aurora' sleeping train.

Celebrate Australia's diverse history and rich culture with visits to charming regional towns, gardens and attractions. The train travels by day and is stationary overnight, ensuring you'll get a restful sleep ready for tomorrow's adventure.

By day, relax in the comfort of your cabin or make new friends with fellow guests in the dining or lounge carriages. Enjoy hearty cuisine, freshly prepared by on board chefs using locally sourced produce. The lounge car is the perfect place to enjoy a pre or post dinner drink and watch the passing scenery.



Three Sisters, Blue Mountains



RIVERINA RAIL TOUR 5 DAYS

Day 1: Sydney to Bowral (LD) Depart on the 'Aurora Australis' and journey to Goulburn. Explore the sights of Goulburn, choosing from one of two off-train experiences. This evening enjoy dinner on board.

Day 2: Junee to Murrumbidgee (BLD) Travel via Coolamon to Murrumbidgee, experiencing a heritage museum, licorice factory and artisan cheese making.

Day 3: Whitton to Griffith (BLD) This morning enjoy breakfast on board before departing on one of two off-train experiences showcasing the regions local farms,

distilleries and wineries. Reboard the train for the journey to Temora.

Day 4: Temora to Orange (BLD) Explore the town of Temora, visiting the Temora Rural and Ambulance Museum or the Temora Aviation Museum. After your tour, reboard the train for your journey to Orange.

Day 5: Orange to Sydney (BL) Journey towards the Blue Mountains where you will enjoy an adventure on the Zig Zag Railway before reboarding and returning to Sydney.

(B = breakfast, L = lunch, D = dinner)

From **\$4490*** per person twin share

5 DAYS | SYDNEY TO SYDNEY

OPERATOR: Vintage Rail Journeys

TRAVEL TYPE: Escorted rail

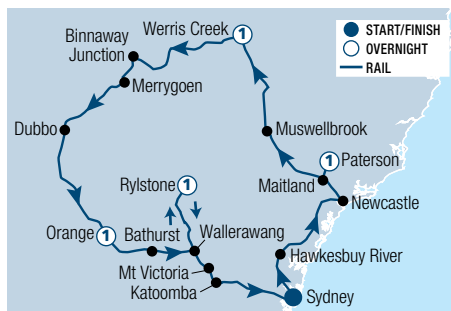
DEPARTS: 13, 27 Apr 26

INCLUDES

- 4 nights in a Heritage Twin cabin
- All-inclusive dining, wines, beverages, tea and coffee throughout your journey
- Delight in the sights and sounds of Fairground Follies, the Antique Mechanical Music Museum in Bowral
- Enjoy a tour and lunch experience at a Coolamon artisan cheese maker
- From farm to fork and vine to wine, meet a collection of some of the best producers in the Riverina
- Stop at Mt Victoria, for an adventure on the Zig Zag Railway



Audrey Wilkinson Vineyard, Pokolbin



GOLDEN WEST RAIL TOUR 5 DAYS

Day 1: Sydney to The Hawkesbury (LD) Board the 'Aurora Australis' and journey to the spectacular Hawkesbury River. Join the famous 'Riverboat Postman' for a lunch cruise. Continue your rail journey to Maitland.

Day 2: Hunter Valley Vineyards (BLD) Enjoy one of three off-train experiences in the Hunter Valley before continuing your journey to Werris Creek.

Day 3: Werris Creek (BLD) After breakfast on board, discover Quirindi Rural Heritage village before travelling to Werris Creek and exploring the Rail Journeys Museum. Dinner will be on board as we head to Orange.

Day 4: Bathurst (BLD) Travel from Orange to Bathurst where your choice of two off-train experiences awaits. After your tour, visit the Bathurst Rail Museum before departing for Rylstone.

Day 5: Mudgee to Sydney (BL) Explore Rylstone and surrounds before enjoying a cellar door lunch at Lowe Family Wine Co in Mudgee and travelling back to Sydney.

(B = breakfast, L = lunch, D = dinner)

From **\$3790**^** per person twin share

5 DAYS | SYDNEY TO SYDNEY

OPERATOR: Vintage Rail Journeys

TRAVEL TYPE: Escorted rail

DEPARTS: 17, 31 Aug, 14, 28 Sep, 26 Oct, 9, 23 Nov 26

INCLUDES

- 4 nights in a Heritage Twin cabin
- All-inclusive dining, wines, beverages, tea and coffee throughout your journey
- Take a Riverboat cruise on the Hawkesbury River including lunch
- Enjoy a winery experience in the Hunter Valley
- Visit the quaint heritage village of Quirindi in rural New South Wales
- Discover Bathurst's Abercrombie House or Mayfield Gardens

^ Based on advance purchase fares, must be booked 6 months in advance, other fare types are available.

*FROM PRICES ARE A GUIDE ONLY, subject to change and availability and are in Australian Dollars. Prices are per person per package twin share, unless otherwise specified and for travel in the lowest season. For full terms and conditions, refer to the Booking Conditions on the inside back cover of this brochure.



Vivid Sydney, Sydney Harbour

Destination NSW

SYDNEY

Set around the world's largest natural harbour, Sydney is a thriving city of urban sophistication, world-class restaurants and a vibrant arts and culture scene. Explore the exhibits at the Art Gallery of New South Wales and the Australian Museum or reserve tickets to world famous musicals and shows in the city's theatres. If you love shopping, you won't have to go far for the best that Sydney has to offer. Conquer the malls and arcades including Pitt Street Mall, Westfield Sydney and the Queen Victoria Building.

SEE

- Take in amazing views from 250 metres above the city streets at the Sydney Tower Eye
- Watch as artwork and images of Aboriginal artists illuminate the sails of the Sydney Opera House at sunset daily

DO

- Sit on Mrs Macquarie's Chair and enjoy the views from this landmark dating back to 1810
- Explore the Rocks Precinct, Sydney's oldest neighborhood

EAT & DRINK

- Enjoy a cocktail at Opera Bar, located right on the harbour with fabulous views
- Dine on authentic Chinese cuisine in the country's largest Chinatown

WHAT'S ON

Vivid Sydney

22 May to 13 June

State of Origin – Game 3

27 May

Sydney Film Festival

3 to 14 June

NRL Grand Final

4 October

Sydney to Hobart to Yacht Race

26 December

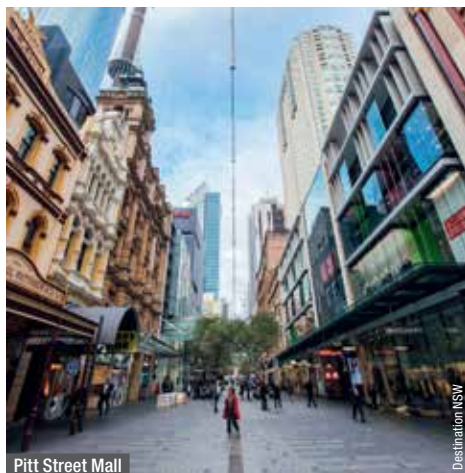
Mardi Gras

13 February to 1 March



The Strand

Destination NSW



Pitt Street Mall

Destination NSW



Dixon Street, Chinatown

Destination NSW

REF.	APARTMENTS	PAGE
1	A by Adina Sydney	20
2	Adina Apartment Hotel Bondi Beach, Sydney	26
3	Adina Apartment Hotel Sydney, Town Hall	22
REF.	HOTELS	PAGE
4	Ace Hotel Sydney	23
5	Amora Hotel Jamison Sydney	23
6	Crown Towers Sydney	24
7	Crowne Plaza Sydney, Darling Harbour	22
8	Four Seasons Hotel Sydney	24
9	Furama Darling Harbour	20
10	Holiday Inn Potts Point Sydney	20

REF.	HOTELS	PAGE
11	Intercontinental Sydney	24
12	Metro Aspire Hotel Sydney	20
13	Metro Hotel Marlow Sydney Central	21
14	Ovolo Woolloomooloo	25
15	Paradox Sydney	25
16	PARKROYAL Darling Harbour	22
17	Rydges Australia Square	21
18	Rydges Cronulla Beachside	26
19	Rydges World Square Sydney	21
20	Shangri-La, Sydney	25
21	Spicers Potts Point	23
22	Vibe Hotel Sydney	21
23	Vibe Hotel Sydney Darling Harbour	23
24	Wildlife Retreat at Taronga	26



SYDNEY TOURS



BRIDGECLIMB SUMMIT

BridgeClimb Sydney is an iconic Australian experience that offers a unique way to explore the city and discover one of the nation's most famous and celebrated structures – the Sydney Harbour Bridge.

With every day on the Bridge unique, everyone will take something different from this unforgettable experience.

Includes:

- BridgeClimb cap
- Printed Climb group photo
- Bridge and Sydney commentary
- 360-degree views

Not suitable for children under 8 yrs. Children 8-15 yrs must be accompanied by an adult climber. Other tours available.

	Adult	Child 8-15 yrs
Summit Day Climb	\$383* [^]	\$164* [^]
Summit Night Climb	\$332* [^]	\$164* [^]
Summit Twilight Climb	\$424* [^]	\$250* [^]

[^]Price based on Mon-Fri climbs.



TARONGA ZOO

Located just 12 minutes from the city by ferry, Taronga Zoo boasts spectacular panoramic views of Sydney Harbour. Admission includes access to over 25 keeper talks and presentations to better acquaint guests with the 4,000 native and exotic animals that call the zoo home. Or make the most of your visit and stay overnight at the Wildlife Retreat at Taronga. Refer to page 26 for details.

Includes:

- Daily Free Flight Bird Presentation and Seals for the Wild Presentation
- Informative keeper talks throughout the day

Daily activities at an extra charge:

- Aussie Backyard Adventure

Operator: Taronga Zoo

Open: 9:30am – 5pm daily

	Adult	Child 4-15 yrs
Admission	\$55*	\$33*



WILD AUSTRALIA EXPERIENCE

This premium tour will be hosted by one of Taronga's amazing zookeepers and allows guests to get up close and personal to the Australian wildlife that call Nura Diya (this country) home. Explore the Australian animal precincts and enjoy exclusive behind the scenes experiences as well as a koala encounter.

Includes:

- Koala encounter
- Behind the scenes experiences

Operator: Taronga Zoo

Duration: 2 hours

Departs: Daily from the Information Desk in the main entrance at Taronga Zoo at 10:15am, 1pm

Overnight Roar and Snore packages are available.

	Adult	Child 4-15 yrs
Guided Tour	\$182*	\$162*



BACKSTAGE TOUR

Experience the Opera House from behind the scenes with this small group tour. Get ready to explore places usually off limits to the general public, venture through backstage corridors, rehearsal spaces and into the orchestra pit. Discover what makes the Opera House both a world-renowned icon and a world-class performance venue. Complete the experience with breakfast in the Green Room – the exclusive domain of the crew and performers.

Includes:

- Guided backstage tour
- Breakfast in the Green Room

Operator: Sydney Opera House

Duration: 2 hours 30 minutes

Departs: Daily from the Stage Door, Sydney Opera House at 6:45am

Not suitable for children under 10 yrs. Enclosed shoes required.

	Adult/Child
Guided Tour	\$199*



SYDNEY OPERA HOUSE TOUR

Led by expert guides with a passion for the building and the people within it, a Sydney Opera House tour offers a glimpse into the thrilling and dramatic world of one of the busiest performing arts centres in the world.

Includes:

- 60 minute guided tour
- Audio headsets
- Upgrade to Tour & Dine: add a main meal with one beverage and your choice of harbourside food and beverage outlets

Operator: Sydney Opera House

Duration: Tour: 60 minutes

Tour & Dine: 2 hours

Departs: Daily from the Welcome Centre, Sydney Opera House between 9am and 5pm (block out dates apply)

	Adult	Child 5-15 yrs
Guided Tour	\$50*	\$30*
Tour & Dine	\$93*	\$52*



OPERA HOUSE EXPERIENCE PACKAGES

Enjoy a one-hour intimate group tour of the iconic Sydney Opera House. After your guided walking tour indulge in a two course dining experiences and soak up the atmosphere and views from one of Sydney's best restaurants.

Includes:

- 1 hour intimate guided tour
- 2 course dinner with 2 drinks at Midden by Mark Olive or Bennelong Restaurant

Operator: Sydney Opera House

Duration: 3 hours

Departs: The Lounge, Sydney Opera House at 4:15pm
Midden Experience: Daily
Bennelong Experience: Mon to Sat

	Adult
Midden Experience	\$220*
Bennelong Experience	\$385*



HARBOUR VIEW LUNCH CRUISE

The Harbour View Lunch Cruise offers an exceptional restaurant experience, featuring à la carte dining and endless Sydney Harbour views. Choose from the two course lunch or indulge in a three course long lunch.

Includes:

- 2 or 3 course menu options
- Leisurly cruising with million-dollar views

Operator: Captain Cook Cruises

Duration: Harbour View Lunch: Up to 2 hours 30 minutes
Harbour View Long Lunch: Up to 4 hours

Departs: Wed to Sun from Darling Harbour King Street Wharf No.1 at 12 noon and 1:30pm, Circular Quay Wharf No.6 at 12:30pm

	Adult	Child 4-15 yrs
Harbour View Lunch	\$109*	\$49*
With Window Seating	\$129*	\$69*
Harbour View Long Lunch	\$129*	\$59*
With Window Seating	\$149*	\$79*



SUNSET DINNER CRUISE

Experience the colour of spring and autumn sunsets, winter twilight or the endless days of summer on this Sydney Harbour Sunset Dinner cruise. Choose from the three course Sunset Dinner or the four course Premium Sunset Dinner. This cruise offers great opportunities to photograph the amazing Sydney Harbour sunset for much of the year, outside of daylight saving.

Includes:

- Up to 2 hour cruise
- 3 or 4 course premium menu options

Operator: Captain Cook Cruises

Duration: Up to 2 hours

Departs: Wed to Sun from Darling Harbour King Street Wharf No.1 at 5pm and Circular Quay Wharf No.6 at 5:30pm

	Adult	Child 4-15 yrs
Sunset Dinner	\$129*	\$49*
With Window Seating	\$149*	\$69*
Premium Sunset Dinner	\$139*	\$49*
With Window Seating	\$159*	\$69*



PREMIUM HARBOUR CRUISE

This is sightseeing as you've never experienced before. It's a glass of sparkling by the sails of the Sydney Opera House and a delicious Australian cheese and charcuterie board to share between two, as you relax in style and cruise Sydney Harbour in comfort from your reserved Ocean Deck lounge or table seating as you marvel at the sights of stunning Sydney.

Includes:

- One circuit of Sydney Harbour
- One beverage of your choice on arrival
- An Australian cheese and charcuterie board to share between two (vegan option available)

Operator: Captain Cook Cruises

Duration: 12 noon departure: 1 hour 30 minutes
1:30pm departure: 2 hours 30 minutes

Departs: Wed to Sun from Darling Harbour Wharf at 12 noon and 1:30pm, Circular Quay Wharf 6 at 12:30pm and 2pm

	Adult	Child 4-15 yrs
Premium Harbour Experience	\$77*	\$49*



LUNCH OR DINNER CRUISE

In a city which revolves around its spectacular waterways, there's no better way to experience Sydney than on the luxury cruiser, Spirit of Migloo. Seating just 80 people, the vessel features expansive sun, upper and main decks providing uninterrupted, 360 degree views of one of the world's most famous harbours.

See all the iconic sights including the Sydney Harbour Bridge, Opera House and Luna Park. On the lunch cruise, enjoy a lavish two course, a la carte menu featuring locally sourced and regionally inspired delights.

While Sydney Harbour is photogenic at any time of day, there's nothing quite like the pink tinge to the sky as the sun slowly sets and the twinkling city lights come alive revealing the gleaming metropolis. See the harbour on a dinner cruise and enjoy a regionally focused three course menu highlighting the multicultural influences that make Sydney cuisine so special.

Whichever cruise you choose, wine lovers are in for a treat with wines hand selected from some of the finest wine regions in New South Wales.

Includes:

- 2 or 2.5 hour cruise on Sydney Harbour
- 360 degree views of iconic attractions
- 2 course lunch or 3 course dinner paired with a selection of beers, wines, soft drinks and tea or coffee

Operator: Journey Beyond Cruise Sydney

Duration: Lunch Cruise: 2 hours
Dinner Cruise: 2 hours 30 minutes

Departs: Lunch Cruise: From King Street Wharf No.8 at 12:10pm, Tue to Sun.

Dinner Cruise: From King Street Wharf No.8 at 6:25pm, Tue to Sun (Oct – Jun) Tue, Thu, Sat (Jul – Sep)

	Adult	Child 4-17 yrs
Lunch Cruise	\$159*	\$95*
Dinner Cruise	\$215*	\$95*



SYDNEY TOURS



SELF-DRIVE SPEEDBOAT ADVENTURE HIGHLIGHTS TOUR

Be your own captain and discover Sydney Harbour's icons on this scenic and award-winning adventure. Glide past the Opera House and under the Harbour Bridge. Admire luxury waterfront homes in Point Piper, Mosman and Rose Bay, and enjoy views of Athol Bay and Hermit Bay's beautiful beaches. No license is required.

Includes:

- Use of motor boat
- Use of life vest, waterproof bag and poncho
- Tour photos

Operator: Explore Sydney Harbour

Duration: 2 hours

Departs: Wed to Sun from Rose Bay Boat Ramp at 10am, 1pm and 3:15pm

Minimum rental age 18 yrs. Not suitable for children under 8 yrs.

	Adult/Child
Guided Tour	\$150*

GOLD PENFOLDS DINNER CRUISE

The quintessential gourmet food and wine experience on Sydney Harbour. Indulge in a six course degustation dinner with matched Penfolds wines.

Includes:

- 6 course degustation dinner with matched Penfolds wines and a selection of house spirits, liqueurs, beers and soft drinks
- Live music
- 6 course degustation dinner (without drinks option)

Operator: Captain Cook Cruises

Duration: 2 to 3 hours

Departs: Wed, Thu & Sun from Darling Harbour King Street Wharf No.1 at 5pm and Circular Quay Wharf No.6 at 5:30pm, Fri and Sat from Darling Harbour King Street Wharf No.1 at 7pm

Not suitable for children under 18 yrs.

	Adult
Dinner Cruise with matched wines	\$299*
Dinner Cruise with matched wines and window upgrade	\$320*
Dinner Cruise without drinks	\$225*



BONDI LOCAL

Start your experience with a tour of the surf lifesaving club and gain an insight into the history of Bondi. Then hit the waves with a local Bondi surf instructor and test your surfing skills. After your surf session, unwind with a casual beachside lunch with five star views across Bondi.

Includes:

- Interactive history of Bondi presentation
- Surf club tour
- Surf lifesaving demonstration
- Surf Lesson
- Use of wetsuit, rash vest and sun block
- Return transfers

Operator: Lets Go Surfing

Duration: 4 hours

Departs: Daily from 128 Ramsgate Ave, Bondi Beach

Not suitable for children under 7 yrs.

	Adult/Child
Surf Lesson and Tour	\$515*



SYDNEY HARBOUR DISCOVERY

Discover the secrets and history of Sydney Harbour with live commentary. Experience the beauty of the harbour with its world famous icons the Sydney Opera House and Sydney Harbour Bridge, harbourside mansions and spectacular views with multiple photo opportunities.

Includes:

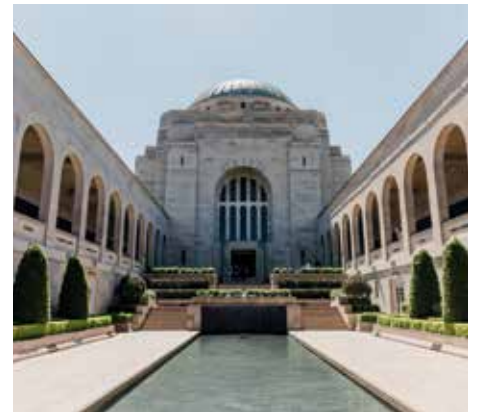
- Harbour cruise
- Live commentary
- Tea and coffee station
- Full buffet lunch (lunch cruise only)

Operator: Sydney Princess Cruises

Duration: Morning and Afternoon: 90 minutes
Lunch: 2 hours 15 minutes

Departs: Daily from Eastern Pontoon, Circular Quay
Morning: 10:15am, Lunch: 12 noon, Afternoon: 2:30pm

	Adult	Child 5-14 yrs
Morning Cruise/ Afternoon Cruise	\$59*	\$39*
Lunch Cruise	\$79*	\$59*



CANBERRA COLOURFUL DAY TOUR

Travel with a small group from Sydney through Australian bush and sheep country and visit all Canberra's highlights during a fun and personalised day! Canberra is unlike any other capital city, and you must go and see it to understand why.

Includes:

- Majestic views from Mt Ainslie lookout
- Tour of Parliament House
- Visit the Australian War Memorial
- Free time at the National Museum of Australia
- Discover the National Embassies
- Transport in a premium vehicle

Operator: Colourful Collective Travel

Duration: 13 hours 30 minutes

Departs: Tue, Thu and Sat from two selected city departure points at 7:15am

Not suitable for children under 8 yrs.

	Adult/Child
Full Day Tour	\$219*



BLUE MOUNTAINS SUNSET TOUR WITHOUT THE CROWDS

Enjoy a late morning departure for the Blue Mountains National Park, avoiding crowds. Experience stunning sunset views, the iconic Three Sisters rock formation, secret bush trails, and breathtaking lookouts over Jamison Valley. Spot native wildlife, hear cascading waterfalls at Wentworth Falls, and explore this World Heritage-listed wilderness.

Includes:

- Guided bush walks • All National Park entry fees
- Hosted by an experienced driver guide
- Transport by air-conditioned mini-coach with Wi-Fi

Operator: Autopia Tours

Duration: 10 hours 30 minutes

Departs: Daily from Mercure Sydney at 10am winter and 12 noon summer

Not suitable for children under 6 yrs. Moderate fitness level required.

	Adult	Child 6-12 yrs
Sightseeing Tour	\$180*	\$162*



BLUE MOUNTAINS ALL-INCLUSIVE SMALL GROUP TOUR

Experience Sydney's number one rated small group day tour on a full day journey showcasing breathtaking landscapes and iconic landmarks. Join a regional expert and embark on an unforgettable journey through the breathtaking Blue Mountains.

Includes:

- Guided admission into Skyway, Railway and Cableway
- Guided rainforest boardwalk through Jamison Valley
- Sit-down lunch at a Blue Mountains village restaurant
- Visit the Iconic Three Sisters lookout
- See Australian animals at Featherdale or Sydney Zoo
- Return ferry on Parramatta River into Sydney Harbour

Operator: Anderson's Tours

Duration: 10 hours

Departs: Daily

	Adult	Child 3-12 yrs
Full Day Tour	\$289*	\$230*



BLUE MOUNTAINS ALL-INCLUSIVE DAY TOUR

When you only have one day to discover the majestic World Heritage-listed Blue Mountains, this Blue Mountains All Inclusive Signature Experience provides you with an easy choice. From feeding kangaroos to breathtaking views, enjoy a wonderful day of exploration!

Includes:

- Scenic World unlimited rides pass
- Admission to Featherdale Wildlife Park
- Admission to Blue Mountains National Park
- Waterfalls and lookouts
- Lunch

Operator: Colourful Collective Travel

Duration: 10 hours

Departs: Tue to Sun from three selected city departure points from 7:15am

Not suitable for children under 8 yrs.

	Adult/Child
Full Day Tour	\$285*



UNCHARTED BLUE MOUNTAINS

Discover the amazing Blue Mountains with a flexible itinerary that is truly off the charts! Explore a mountain village and be guided on short walks into the stunning rainforest landscapes. On the way to the Blue Mountains visit Featherdale Wildlife Park for a hands-on Australian wildlife encounter with the chance to feed kangaroos and take a photo with a koala (extra charge).

Includes:

- Admission to Featherdale Wildlife Park
- Guided bushwalks
- Explore relaxed mountain villages
- Visit the Three Sisters at Echo Point
- Return transfers from select city accommodations

Operator: Boutique Tours

Duration: 10 hours 30 minutes

Departs: Daily from selected city departure points from 7am

	Adult	Child 3-12 yrs
Full Day Tour	\$199*	\$169*



HUNTER VALLEY SIGNATURE WINE TOUR

Explore the Hunter Valley wine region, tasting some of Australia's best wine, food, cheese, chocolate, beer and distilled spirits. Visit hidden gems and gain local knowledge about the wineries on this group tour.

Includes:

- Visit 3 award winning and boutique wineries
- An exclusive 'behind the scenes' wine production tour
- Lunch with a glass of wine, beer or soft drink
- Local gourmet cheese and wine pairing
- Delicious chocolate, wine pairing, organic vodka, schnapps, liqueur and gin tasting

Operator: Colourful Collective Travel

Duration: 12 hours

Departs: Tue to Sun from three selected city departure points from 7:15am

Not suitable for children under 18 yrs.

	Adult
Full Day Tour	\$279*



BOUTIQUE WINE & CHEESE TASTING TOUR

Located just two hours north of Sydney, the Hunter combines world renowned wines, gourmet produce and stunning countryside. The focus is on boutique wineries where the passion of the wine makers is obvious. The flexible itinerary provides access to a range of excellent wineries and the opportunity to meet the wine makers.

Includes:

- Fully escorted wine tour with expert guides
- Tastings at 3-4 boutique wineries
- Formal cheese tasting
- Light café lunch with a glass of wine
- Return transfers from city accommodation

Operator: Boutique Tours Australia

Duration: 10 hours

Departs: Mon to Sat from Sydney at 7am

Not suitable for children under 18 yrs.

	Adult
Full Day Tour	\$249*

*PRICES ARE A GUIDE ONLY, subject to change and availability and are in Australian Dollars. Prices are per person, unless otherwise specified and based on travel in low season. For full terms and conditions, refer to the Booking Conditions on the inside back cover of this brochure.

SYDNEY ACCOMMODATION

A BY ADINA SYDNEY



Studio

2 Hunter Street, Sydney
MAP PAGE 15

From **\$413***

- ❖ Luxury studio and apartment style accommodation with city views
- ❖ Relax in the indoor heated mineral pool
- ❖ Home to the Dean & Nancy on 22 cocktail bar

Location: Perfectly positioned on the corner of George and Hunter Streets and just a short stroll from Australia Square. Distances: Pitt Street Mall 550m, Darling Harbour 1.6km, Circular Quay 1.4km, Airport 9.8km.

Property Features: Pool (heated indoor), Restaurant, Bar, Room service, Gym, 24 hour reception, Dry cleaning service, Non smoking, 194 rooms.

Room Features: Air-conditioning, Limited cooking facilities (Studio), Kitchen with dishwasher (1 Bedroom), Microwave, Tea/coffee making facilities, Coffee pod machine, Mini bar, Washer/dryer (1 Bedroom), Ironing facilities, Hair dryer, Safe.

Max Capacity: Studio/Destination A Studio/1 Bedroom/Destination A 1 Bedroom – 2.



FREE

FURAMA DARLING HARBOUR



Deluxe King

68 Harbour Street, Darling Harbour
MAP PAGE 15

From **\$312*^**

- ❖ Sustainable and eco-friendly hotel
- ❖ Contemporary rooms with modern amenities
- ❖ Convenient location in centre of Sydney

Location: In the vibrant downtown Sydney, next-door to Chinatown, Darling Square and Darling Harbour's crowd-pleaser. Distances: Capitol Theatre 450m, Cockle Bay Wharf 1km, QVB Mall 1.1km, Circular Quay 2.6km, Airport 7.5km.

Property Features: Restaurant (breakfast), 24 hour gym, 24 hour reception, Laundry facilities, Non smoking, Parking (off-site, extra charge), 370 rooms.

Room Features: Air-conditioning, Mini fridge, Tea/coffee making facilities, 49" LCD TV, Ironing facilities, Google Chromecast, Hair dryer, Safe.

Max Capacity: Superior King/Twin – 2, Deluxe King/Premier King – 3, Deluxe Family – 4 adults or 2 adults/2 children.

^Price applies Sun-Thu nights.



FREE

HOLIDAY INN POTTS POINT SYDNEY



Standard

203 Victoria Street, Potts Point
MAP PAGE 15

From **\$273***

- ❖ Walk to Potts Point Dining Precinct or Royal Botanic Gardens
- ❖ Choose a city or harbour view room
- ❖ Kids 12 and under stay and eat for free with an accompanying adult

Location: Located in Potts Point village, a quieter enclave on the rim of Sydney's busy heart. Potts Point is a mix of elegant Art Deco architecture, late Victorian terraces and heritage mansions. Distances: Beach 3km, Sydney CBD 1.5km.

Property Features: Restaurant, Gym, Laundry facilities, 24 hour reception, Non smoking, Parking (extra charge), 288 rooms.

Room Features: Air-conditioning, Tea/coffee making facilities, Ironing facilities.

Max Capacity: Standard – 3, Harbour View – 2, Premium City View – 4.



FREE

METRO ASPIRE HOTEL SYDNEY



Premium

383-389 Bulwara Road, Ultimo
MAP PAGE 15

From **\$267***

- ❖ Spacious rooms with large private balconies
- ❖ Contemporary Australian restaurant
- ❖ Easy access to Sydney's shopping and entertainment hub

Location: On a quiet street close to the Darling Harbour tourism precinct and within walking distance to the Powerhouse Museum, Paddy's Market, Chinatown and International Convention Centre. Distances: Pitt Street Mall 1.9km, Darling Harbour 900m, Circular Quay 3.2km, Airport 7.3km.

Property Features: Restaurant, Lift, 24 hour reception, Non smoking, Parking (extra charge), 96 rooms.

Room Features: Air-conditioning, Balcony, Tea/coffee making facilities, Smart TV, Ironing facilities.

Max Capacity: Premium – 3.



FREE

* FROM PRICES ARE A GUIDE ONLY, subject to change and availability and are in Australian Dollars. Prices are per room per night for 2 people, unless otherwise specified and based on the lowest room category for travel in low season. For full terms and conditions, refer to the Booking Conditions on the inside back cover of this brochure.

METRO HOTEL MARLOW SYDNEY CENTRAL



Superior

431-439 Pitt Street, Haymarket
MAP PAGE 15

From **\$260***

- ❖ Close to Sydney's Capitol theatre and in the heart of the retail district
- ❖ Elegant rooms with modern conveniences
- ❖ Full breakfast available at on-site restaurant

Location: Conveniently close to Central Station and a short walk to Chinatown and the bustling city centre. Distances: Pitt Street Mall 1.1km, Darling Harbour 500m, Circular Quay 2.3km, Airport 7.4km.

Property Features: Pool, Restaurant, Lift, 24 hour reception, Non smoking, 220 rooms.

Room Features: Air-conditioning, Tea/coffee making facilities, Ironing facilities, Safe.

Max Capacity: Superior – 3.



FREE

RYDGES AUSTRALIA SQUARE



Atrium

97-99 Pitt Street, Sydney
MAP PAGE 15

From **\$292***

- ❖ Just moments from premier shopping destinations
- ❖ Indulge in bold flavours at Le Petit Flot
- ❖ Unwind at Poco Local Wine Bar

Location: In the heart of Sydney, with convenient transport options. Pitt Street Mall 500m, Darling Harbour 1km, Circular Quay 800m, Airport 8.8km.

Property Features: Air-conditioning, Restaurant, Bar, 24 hour reception, Non smoking, 280 rooms.

Room Features: Air-conditioning, Tea/coffee making facilities, Mini bar, Ironing facilities, Safe.

Max Capacity: Atrium/Superior/Deluxe – 2 adults or 2 adults/1 child.



FREE

RYDGES WORLD SQUARE SYDNEY



Deluxe Split King

389 Pitt Street, Sydney
MAP PAGE 15

From **\$315***

- ❖ Located in the heart of Sydney CBD
- ❖ Live music available on Saturdays at the Sydney Cidery
- ❖ Some rooms have a private balcony overlooking the city

Location: In the World Square shopping and business precinct, perfect for sightseeing, shopping or a relaxed stay. Distances: Pitt Street Mall 750m, Darling Harbour 850m, Circular Quay 2km, Airport 7.6km.

Property Features: Restaurant, Bar, Gym, 24 hour reception, Valet parking (extra charge), 460 rooms.

Room Features: Air-conditioning, Mini bar, Tea/coffee making facilities, In-room movies (pay to view), Cable TV, Ironing facilities, Hair dryer, Safe, All rooms non smoking.

Max Capacity: Deluxe Split King/Executive King – 3, Deluxe Twin/Executive King Suite – 4, Family – 5.



FREE

VIBE HOTEL SYDNEY



Guest

111 Goulburn Street, Sydney
MAP PAGE 15

From **\$319***

- ❖ Sunny rooftop pool and deck
- ❖ Popular café and bar, perfect for breakfast and afternoon drinks
- ❖ Close to Hyde Park and Chinatown

Location: Close to the many attractions Sydney has to offer including Darling Harbour and shopping districts. Distances: Pitt Street Mall 1.1km, Darling Harbour 1.1km, Circular Quay 2km, Airport 6.8km.

Property Features: Pool, Restaurant, Café, Bar, 24 hour room service, Gym, Laundry/dry cleaning service, 24 hour reception, Non smoking, 198 rooms.

Room Features: Air-conditioning, Mini bar, Tea/coffee making facilities, Chromecast, Docking station, Ironing facilities, Hair dryer, Safe.

Max Capacity: Guest – 2, Family – 4.



FREE

SYDNEY ACCOMMODATION

ADINA APARTMENT HOTEL SYDNEY, TOWN HALL



Guest Studio

511 Kent Street, Sydney
MAP PAGE 15

From **\$474** ^{**^}

- ❖ Walking distance to popular shopping districts and attractions
- ❖ Semi-indoor heated pool and gym
- ❖ Large apartments are great for families

Location: In Sydney's CBD, only a 10 minute walk to Pitt Street Mall. Distances: Pitt Street Mall 700m, Darling Harbour 600m, Circular Quay 2km, Airport 7.6km.

Property Features: Pool (heated), Restaurant, Café, Gym, Sauna, 24 hour reception, Parking (extra charge), 144 rooms.

Room Features: Air-conditioning, Mini bar, Kitchen (1, 2 and 3 Bedroom), Limited cooking facilities (Studio), Microwave, Chromecast, Docking station, Laundry (1, 2 and 3 Bedroom), Ironing facilities, Hair dryer, Safe.

Max Capacity: Guest Studio/Premier Studio – 2, Guest 1 Bedroom/Premier 1 Bedroom – 3, Guest 2 Bedroom/Premier 2 Bedroom – 5, Premier 3 Bedroom – 6.

[^]Price applies Sun-Thu nights.



CROWNE PLAZA SYDNEY, DARLING HARBOUR



Standard King

58 Bathurst Street, Sydney
MAP PAGE 15

From **\$385** *

- ❖ Rooms offer contemporary furnishings with art déco accents
- ❖ Envious location only a five minute walk to Darling Harbour
- ❖ Rooftop heated pool and sundeck

Location: On the corner of Bathurst and Sussex Streets, within a five minute walk to Town Hall, QVB and Chinatown. Distances: Cockle Bay Wharf 500m, Pitt Street Mall 750m, Circular Quay 2km, Airport 12km.

Property Features: Pool (heated rooftop), Rooftop terrace, Sundeck, Restaurants (2), Café, Bar, 24 hour room service, Gym, Dry cleaning services, Lift, 24 hour reception, Non smoking, Parking (extra charge), 152 rooms.

Room Features: Air-conditioning, Tea/coffee making facilities, Coffee pod machine, Mini bar, Smart TV, Bluetooth speakers, Ironing facilities, Hair dryer, Bathrobes, Safe.

Max Capacity: Standard King/Premium King/Junior King Suite – 3, Premium 2 Queen – 4.



PARKROYAL DARLING HARBOUR



Superior

150 Day Street, Sydney
MAP PAGE 15

From **\$334** *

- ❖ Rooms offering views of Darling Harbour precinct or Sydney CBD
- ❖ Exclusive Club Lounge access for club room guests including breakfast
- ❖ Award winning casual dining restaurant ABODE Bistro. Bar

Location: Ideally located between Darling Harbour and Sydney CBD, with easy access to iconic attractions, SEA LIFE Sydney Aquarium, WILDLIFE Sydney Zoo, Sydney Opera House, Botanical Gardens and vibrant shopping and dining hubs of Pitt Street Mall and Chinatown. Distances: Pitt St Mall 850m, Darling Harbour 350m, Circular Quay 2km, Airport 8.1km.

Property Features: Restaurant, 24 hour room service, Gym, Guest laundry, Lift, 24 hour reception, Parking (extra charge), 341 rooms.

Room Features: Air-conditioning, Tea/coffee making facilities, Ironing facilities, Hair dryer, Safe.

Max Capacity: Superior/Deluxe – 4, Club – 2.



SPICERS POTTS POINT



King

120/124 Victoria Street, Potts Point
MAP PAGE 15

From **\$447** *[^]

- ❖ In the heart of Potts Point, surrounded by restaurants and bars
 - ❖ Beautiful 19th century architecture with a contemporary twist
 - ❖ Breakfast served daily in the picturesque Garden Room
- Includes full breakfast daily.**

Location: In the heart of Potts Point, with designer boutiques and award-winning restaurants within walking distance, also close to multiple transport options. Distances: Beach 2.9km, Sydney CBD 2.4km, Airport 11 km.

Property Features: Guest lounge, Bar, Non smoking, Parking (on the street – extra charge), 20 rooms.

Room Features: Verandah with sitting area (Victoria Terrace Suite), Air-conditioning, Mini bar, Tea/coffee making facilities, Ironing facilities, Bathrobes and slippers, Hair dryer, Safe.

Max Capacity: King/Luxe/Victoria/Victoria Terrace – 2.

[^]Price applies Sun-Thu nights.



VIBE HOTEL SYDNEY DARLING HARBOUR



Guest Room

319-325 Sussex Street, Sydney
MAP PAGE 15

From **\$334** *[^]

- ❖ Within walking distance to the entertainment of Darling Harbour
- ❖ Artfully designed hotel with Manhattan-styled theming
- ❖ Rooms feature lifestyle amenities including rainfall showers

Location: At the upper end of Chinatown in a convenient location. Distances: Cockle Bay Wharf 900m, Pitt Street Mall 1km, Circular Quay 2km, Airport 14km.

Property Features: Rooftop pool, Restaurant, Café, Bar, 24 hour room service, Gym, Dry cleaning service, 24 hour reception, 145 rooms.

Room Features: Air-conditioning, Tea/coffee making facilities, Mini bar, Cable TV, Ironing facilities, Hair dryer, Safe.

Max Capacity: Guest Room/Deluxe – 2.

[^]Price applies Mon-Thu nights.



ACE HOTEL SYDNEY



Cosy

47-53 Wentworth Avenue, Sydney
MAP PAGE 15

From **\$336** *

- ❖ Located in a historic former brick factory
- ❖ Home to two distinct restaurants
- ❖ Featuring contemporary Australian artworks

Location: Located in Surry Hills, walking distance to Hyde Park, Darlinghurst and Redfern. Distances: Pitt Street Mall 1.3km, Darling Harbour 800m, Circular Quay 2.2km, Airport 7.2km.

Property Features: Restaurants (2), Café, Bar, Gym, 24 hour reception, Non smoking, 255 rooms.

Room Features: Air-conditioning, Mini bar, Tea/coffee making facilities, Cable TV, Ironing facilities, Bathrobes, Hair dryer, Safe.

Max Capacity: Cosy/Medium/Medium Plus – 2, Double Double – 4.



AMORA HOTEL JAMISON SYDNEY



Deluxe King

11 Jamison Street, Sydney
MAP PAGE 15

From **\$422** *

- ❖ Walking distance to Circular Quay, The Rocks and Sydney Opera House
- ❖ Indoor heated swimming pool, jacuzzi, sauna, steam room and spa
- ❖ Modern Australian restaurant showcasing locally sourced produce

Location: Between the historic Rocks area and the CBD. Distances: Pitt Street Mall 1km, Darling Harbour 1.7km, Circular Quay 1km, Airport 8.8km.

Property Features: Pool (heated indoor), Spa, Restaurant, Bar, 24 hour room service, Gym, 24 hour reception, Parking (extra charge), 415 rooms.

Room Features: Air-conditioning, Tea/coffee making facilities, Mini bar, Smart TV, Cable TV, Bluetooth speakers, Ironing facilities, Bath, Safe.

Max Capacity: Deluxe King/Jamison Club King – 2, Deluxe Corner King/Deluxe Park Suite/Jamison Club Executive Suite/Jamison Club Park Suite – 3, Deluxe Double Double/Jamison Club Double Double – 3 adults or 2 adults/2 children.



SYDNEY ACCOMMODATION

CROWN TOWERS SYDNEY



Deluxe King

1 Barangaroo Avenue, Barangaroo
MAP PAGE 15

From **\$799**^{^*}

- ❖ Mesmerising Sydney Harbour views from the luxurious outdoor infinity pool
- ❖ World-class restaurants, including Nobu
- ❖ Crown Spa Sydney offers a complete wellness journey

Location: Located in Barangaroo, a short walk to Darling Harbour, Circular Quay, The Rocks, and both Wynyard and Martin Place train stations. A two-minute walk to the nearest ferry terminal. Distances: Darling Harbour 1.7km, Airport 9km.

Property Features: Pool (infinity), Spa, Restaurants (8), Bars (4), 24 hour room service, Gym, Crown Spa, 349 rooms.

Room Features: Air-conditioning, Mini bar, Tea/coffee making facilities, 55 inch television with streaming services, In-room tablet, USB outlets, Bathrobes, Hair dryer, Safe.

Max Capacity: Deluxe King/Harbour Bridge King/Opera King/Studio/Harbour Bridge Studio/Opera Studio/Exec Suite/Exec Harbour Bridge Suite/Premier Suite/Premier Harbour Bridge Suite – 2, Harbour Bridge Twin/Opera Twin/Tower Suite/Opera Tower Suite – 4.

[^]Price applies Sun-Thu nights.



FOUR SEASONS HOTEL SYDNEY



Deluxe City King

199 George Street, Sydney
MAP PAGE 15

From **\$494**^{*}

- ❖ Iconic Sydney harbour views and world-renowned service
- ❖ Enjoy Mode Kitchen & Bar, for fresh local cuisine
- ❖ Shopping, outdoor adventure and the option to add executive lounge access

Location: On the harbourfront at Circular Quay. Distances: Pitt Street Mall 1km, Darling Harbour 1.5km, Circular Quay 300m, Airport 10.2km.

Property Features: Pool (heated outdoor), Spa (heated outdoor), Restaurant, Bar, 24 hour room service, Endota Spa (day spa), 24 hour fitness centre, Sauna, Steam room, Laundry, 24 hour reception, Parking (extra charge), 531 rooms.

Room Features: Air-conditioning, Mini bar, Coffee pod machine, Morning newspaper, Bluetooth speaker, Bathrobes, Safe.

Max Capacity: Deluxe City King/Deluxe Partial Harbour/Deluxe Full Harbour – 2, Four Seasons Full Harbour Club Suite/One Bedroom City Club Suite/One Bedroom City – 3 adults or 2 adults/2 children. Other room types also available.



INTERCONTINENTAL SYDNEY



Classic

117 Macquarie Street, Sydney
MAP PAGE 15

From **\$487**^{*}

- ❖ Beautifully restored Treasury Building of 1851
- ❖ Sophisticated rooms and suites offer spacious interiors and unforgettable views
- ❖ Heated indoor swimming pool overlooking Sydney Harbour

Location: On the edge of one of the world's most stunning harbours and just a short stroll to the Opera House and ferries. Distances: Pitt Street Mall 1km, Darling Harbour 2.2km, Circular Quay 220m, Airport 9.5km.

Property Features: Pool (heated indoor), Restaurants (2), Bar, 24 hour room service, Gym, Sauna, 24 hour reception, Valet parking (extra charge), 509 rooms.

Room Features: Air-conditioning, Mini bar, Bathrobes, Hair dryer.

Max Capacity: Classic/Eastern Harbour View/Harbour Bridge View/Opera House View – 3 adults or 2 adults/2 children.



^{*} FROM PRICES ARE A GUIDE ONLY, subject to change and availability and are in Australian Dollars. Prices are per room per night for 2 people, unless otherwise specified and based on the lowest room category for travel in low season. For full terms and conditions, refer to the Booking Conditions on the inside back cover of this brochure.

PARADOX SYDNEY



Premium Atrium View

27 O'Connell Street, Sydney
MAP PAGE 15

From **\$408***

- ❖ A five-star stay within a beautifully restored historic Sydney icon
- ❖ Superb location, steps from Sydney's most iconic sights and experiences
- ❖ Exceptionally spacious guest rooms starting from 32sqm

Location: An easy walk to Sydney's sights including the Opera House, Harbour Bridge, Botanic Gardens and Pitt Street Mall. Distances: Pitt Street Mall 400m, The Rocks 1.7km, Circular Quay 850m, Airport 11.6km.

Property Features: Pool (heated indoor), Spa, Steam room, Restaurant, Bar, 24 hour room service, 24 hour fitness centre, 24 hour reception, 364 rooms.

Room Features: Air-conditioning, Tea/coffee making facilities, Mini fridge, Ironing facilities, Bathrobes and slippers, Hair dryer, Safe.

Max Capacity: Premium Atrium View/Heritage – 2, Premier Twin – 3. Other room types also available.



OVOLO WOOLLOOMOOLOO



Horizon King

6 Cowper Wharf Road, Woolloomooloo
MAP PAGE 15

From **\$483***

- ❖ Indoor pool with outdoor pool cabanas
- ❖ Bridging between heritage and modern luxury, contemporary designs and tech-savvy inclusions

Location: Close to the heart of Sydney CBD, in a peaceful wharf location near Sydney Royal Botanic Gardens, you will be in the perfect location to explore beautiful parklands and the Sydney Opera House as well as The Rocks. Distances: Pitt Street Mall 1.4km, Darling Harbour 2.5km, Circular Quay 1.5km, Airport 11km.

Property Features: Pool (indoor), Restaurant, Bar, Candy station (free), Gym, Sundek, 24 hour reception, Non smoking, Valet parking (extra charge), 100 rooms.

Room Features: Air-conditioning, Tea/coffee making facilities, Smart TV with Chromecast, Amazon Alexa, Electric blinds, Ironing facilities, Safe.

Max Capacity: Horizon King/Maritime King/Maritime Loft/Urban King/Urban Loft/Rockstar Suite – 2, Maritime Twin/Urban Twin – 4.



SHANGRI-LA, SYDNEY



Deluxe Darling Harbour

176 Cumberland Street, The Rocks
MAP PAGE 15

From **\$447***

- ❖ Uniquely positioned within the dress circle of Sydney Harbour
- ❖ Award-winning dining experiences
- ❖ Chi, the Spa, is an oasis in the heart of the hotel

Location: In the historic Rocks district overlooking Sydney Harbour. Distances: Pitt Street Mall 1.3km, Darling Harbour 2.1km, Circular Quay 900m, Airport 9.2km.

Property Features: Pool (heated indoor), Spa, Restaurant, Bar, Room service, Day spa, Fitness centre, Sauna, 24 hour reception, Valet parking (extra charge), 565 rooms.

Room Features: Air-conditioning, Mini bar, Cable TV, Tea/coffee making facilities, In-room movies (pay to view), Bathrobes, Safe.

Max Capacity: Deluxe Darling Harbour/Deluxe Opera House City/Executive Darling Harbour/Executive Opera House City/Executive Sydney Harbour/Horizon Opera House City/Horizon Darling Harbour/Horizon Sydney Harbour/Harbour Bridge Suite/Executive Sydney Harbour Suite – 3 adults or 2 adults/2 children, Premier Sydney Harbour Bridge/Horizon Premier Sydney Harbour – 2, Deluxe Harbour Bridge – 3.



*FROM PRICES ARE A GUIDE ONLY, subject to change and availability and are in Australian Dollars. Prices are per room per night for 2 people, unless otherwise specified and based on the lowest room category for travel in low season. For full terms and conditions, refer to the Booking Conditions on the inside back cover of this brochure.

SYDNEY BEACHES & TARONGA ZOO ACCOMMODATION

RYDGES CRONULLA BEACHSIDE



Ocean View

20-26 Kingsway, Cronulla
MAP PAGE 15

From **\$249***

- ❖ Experience newly refurbished rooms, where coastal charm meets modern comfort
- ❖ Take in the breathtaking ocean views from your private balcony
- ❖ Cronulla is a truly unique destination to discover and savour

Location: In the heart of Cronulla opposite the beach. Distances: Cronulla Beach 50m, Airport 20 km, Sydney CBD 23km.

Property Features: Pool, Spa, Bar, 24 hour reception, Non smoking, Parking (extra charge), 84 rooms.

Room Features: Air-conditioning, Mini bar, Coffee pod machine, Ironing facilities, Hair dryer.

Max Capacity: Ocean View – 3 adults or 2 adults/2 children.



ADINA APARTMENT HOTEL BONDI BEACH, SYDNEY



Studio Guest

69/73 Hall St, Bondi Beach
MAP PAGE 15

From **\$380***

- ❖ Modern hotel with sunny courtyard and undercover pool
- ❖ Short walk to the beach, local markets and Bondi Icebergs
- ❖ Spacious apartments with balconies, full kitchen and laundry

Location: Set among trendy restaurants, cafes and bars and ideally located on the hip-strip of Bondi. Distances: Bondi Beach 650m, Airport 15km.

Property Features: Pool, Spa, Gym, 24 hour reception, Non smoking, Parking (extra charge), 111 rooms.

Room Features: Air-conditioning, Balcony, Kitchen with microwave and dishwasher (1 and 2 Bedroom), Limited cooking facilities with microwave (Studio), Mini bar, Cable TV, Docking station, Washer/dryer (1 and 2 Bedroom), Ironing facilities, Hair dryer, Safe.

Max Capacity: Studio Guest – 2, 1 Bedroom Guest – 3, 2 Bedroom Guest – 5.



WILDLIFE RETREAT AT TARONGA



Bushland View

Bradleys Head Road, Mosman
MAP PAGE 15

From **\$656***

- ❖ Elegant eco-retreat nestled within Taronga Zoo
- ❖ Rooms overlook the zoo's bushland, animals or Sydney Harbour
- ❖ A short ferry ride from Circular Quay

Includes full breakfast daily, admission to Taronga Zoo and exclusive tour.

Location: Set within an exclusive native animal sanctuary at Taronga Zoo and overlooking the iconic Sydney Harbour. Distances: Beach 2.2km, Sydney CBD 9.8km, Airport 20.7km.

Property Features: Bar, Restaurant, Guest lounge, Non smoking, Parking (free), 62 rooms.

Room Features: Air-conditioning, Mini bar, Tea/coffee making facilities, Hair dryer, Safe.

Max Capacity: Bushland View/Animal View/Harbour View/Treetop Suite – 2 adults/1 child.

Packages including dinner are also available.



Animal View

* FROM PRICES ARE A GUIDE ONLY, subject to change and availability and are in Australian Dollars. Prices are per room per night for 2 people, unless otherwise specified and based on the lowest room category for travel in low season. For full terms and conditions, refer to the Booking Conditions on the inside back cover of this brochure.



Tomaree Head Summit Walk, Port Stephens

Destination NSW

COASTAL NEW SOUTH WALES

The state's beautiful coastline has sparkling beaches, delightful lakes, lush World Heritage listed rainforests and relaxed beach towns all waiting to be explored. These coastal centres offer so much to do – fishing, boating, surfing, kayaking, stand-up paddle boarding, hiking and dining on fresh seafood and produce.

SEE

- Try your luck at spotting whales migrating off the coast from May to November

DO

- Swim in one of the many picture-perfect ocean baths dotted along the coast
- Ride some of the east coast's best surf breaks at the Pass, Byron Bay

EAT & DRINK

- Enjoy char-grilled meats and seafood at the renowned exclusive steakhouse Ember Byron Bay

WHAT'S ON

Byron Bay Bluesfest
2 to 5 April



Port Macquarie

Destination NSW

REF.	HOTELS	PAGE
1	Angourie Resort Yamba	28
2	Bannisters by the Sea, Mollymook	30
2	Bannisters Pavilion, Mollymook	30
3	Bannisters Port Stephens	29
4	Discovery Parks – Byron Bay	28
5	Mantra Nelson Bay	29
6	Murramarang Beachfront Resort South Durras	30
7	Sails Port Macquarie	28



BYRON SURF EXPERIENCE

Can you imagine yourself riding a wave at beautiful Byron Bay? This popular two hour beginner surf lesson will get you safely up and onto your first wave before you've even had time to worry about falling off. Get an authentic taste of surfing and learn useful safety information about waves and the beach. You won't be able to wipe the smile off your face for hours!

Includes:

- 2 hour surf lesson with a qualified instructor
- Soft, safe surfboard • Small group lesson
- Use of wetsuit, rash vest and sunscreen
- Change room and personal belongings security

Operator: Lets Go Surfing Byron Bay

Duration: 2 hours

Departs: Daily from Byron Bay at 9am, 10am, 2pm

Not suitable for children under 12 yrs.



DOLPHIN KAYAK

Come on an adventure with dolphins, kayaking the famous Byron Bay Marine Park. Enjoy paddling out through the surf and get up close and personal with the friendly Bottlenose dolphins. Spot sea turtles as they come up for air and marvel at the majestic Humpback whales as they migrate through Byron Bay from May to November. All tours finish with all you can eat Tim Tams.

Includes:

- Approx 2.5 hours kayaking tour
- All tuition and equipment supplied
- Experienced guides

Operator: Cape Byron Kayaks

Duration: Approx 2 hours 30 minutes

Departs: 2-3 times daily from Byron Bay

Not suitable for adult non swimmers or children under 5 yrs.



SELF-GUIDED E-BIKE TOUR

Ride the Northern Rivers Rail Trail through lush rainforest, charming villages, historic rail tunnels, and rolling hinterland. Your adventure begins at the Murwillumbah Railway Station shop, the official starting point of the trail. Before setting off, you'll receive easy-to-follow e-bike operating instructions and a brief overview of the trail map. From there, enjoy the full 24 km trail at your own pace, ride out and back for a fun 48 km return journey.

Includes:

- Use of e-bike, helmet, light
- Use of bike lock, pannier bag
- Trail map

Operator: Better by Bike

Duration: 5 – 8 hours

Departs: From Murwillumbah Railway Station, starting from 8am. Bike must be returned by 4pm

	Adult/Child
Surf Lesson	\$89*

	Adult/Child
Kayak Tour	\$91*

	Adult	Child 6-12 yrs
Bike Tour	\$129*	\$99*

*PRICES ARE A GUIDE ONLY, subject to change and availability and are in Australian Dollars. Prices are per person, unless otherwise specified and based on travel in low season. For full terms and conditions, refer to the Booking Conditions on the inside back cover of this brochure.

COASTAL NEW SOUTH WALES ACCOMMODATION

DISCOVERY PARKS – BYRON BAY



Deluxe Safari Tent

399 Ewingsdale Road, Byron Bay
MAP PAGE 27

From **\$181***

- ❖ Kids will love the waterpark and bouncing pillow
- ❖ Set among tropical gardens and lakes adjacent to Belongil Creek
- ❖ A short walk to nearby beaches

Location: Surrounded by beaches and lush hinterland, within walking distance to the beach and cafés and just two kilometres from the centre of Byron Bay. Distances: Beach 2.7km, Town centre 2km.

Property Features: Pools (2), Café, Waterpark, Bouncing pillow, Camp kitchen, Barbecue area, Tennis court, Bicycle hire, Guest laundry, Parking (free), 80 rooms.

Room Features: Air-conditioning, Balcony, Tea/coffee making facilities, Kitchen with microwave, Hair dryer.

Max Capacity: Deluxe Safari Tent/Superior 2 Bedroom Lakeside Cabin/Deluxe Lakeside 2 Bedroom Cabin – 4, Deluxe Studio Lakeside – 2, Superior 2 Bedroom Cabin/Deluxe 2 Bedroom Cabin – 6.



FREE

ANGOURIE RESORT YAMBA



1 Bedroom Spa

166 Angourie Road, Yamba
MAP PAGE 27

From **\$230*^**

- ❖ Rainforest surrounded villas and apartments just minutes from Yamba's beach
- ❖ Relax by the lagoon-style pool with drinks served from the pool bar
- ❖ Day spa with a range of treatments, a therapy pool, and steam room

Location: Surrounded by subtropical rainforest and just moments from Pippi Beach and Barri Beach. Distances: Beach 1.5km, Town centre 2.5km.

Property Features: Pool, Restaurant, Bar, Day spa, Gym, Tennis court, E-bike hire, Parking (free), Guest laundry, 255 rooms.

Room Features: Air-conditioning, Ceiling fans, Full kitchen, Tea/coffee making facilities, Television, Ironing facilities, Hair dryer, Safe.

Max Capacity: 1 Bedroom Spa – 2, 2 Bedroom Villa – 5.

^Price applies Sun-Thu nights.



FREE

SAILS PORT MACQUARIE



Superior Standard

20 Park Street, Port Macquarie
MAP PAGE 27

From **\$299***

- ❖ Stunning bayside location
- ❖ Private jetty and complimentary kayaks
- ❖ Enjoy waterfront dining at The Boathouse Bar & Restaurant

Location: A beautiful bayside location and a 10 minute drive from the town centre. Distances: Beach 2.5km, Town centre 1km.

Property Features: Pool, Tennis court, Restaurant, Bar, Guest lounge, Room service, Spa, Non smoking, Parking (extra charge), 92 rooms.

Room Features: Air-conditioning, Balcony, Mini bar (extra charge), Tea/coffee making facilities.

Max Capacity: Superior Standard/Garden King – 2, Garden/Water Suite – 4.



FREE



MANTRA NELSON BAY



1 Bedroom Apartment

1A Tomaree Street, Nelson Bay
MAP PAGE 27

From **\$295***[^]

- ❖ Lagoon style pool and spa
- ❖ Apartments featuring full kitchen and laundry facilities
- ❖ The perfect location for a relaxing holiday escape

Location: Just two and a half hours from Sydney in the relaxed seaside village of Nelson Bay, on the Central Coast. Distances: Beach 650m, Town centre 700m.

Property Features: Access to Golf Course (27 hole – adjacent to resort), Pool, Spa (heated), Gym, Barbecues, Children's water play area, Parking (extra charge), 110 rooms.

Room Features: Air-conditioning, Balcony, Kitchen, Laundry facilities, Ironing facilities, Hair dryer, Non smoking.

Max Capacity: 1 Bedroom Apartment/1 Bedroom Pool Apartment – 2, 2 Bedroom Apartment – 5. Other room types also available.

[^]Minimum 2 night stay applies.



BANNISTERS PORT STEPHENS



Paperbark

147 Soldiers Point Road, Soldiers Point
MAP PAGE 27

From **\$276***[^]

- ❖ Individually designed bay or forest facing rooms
- ❖ Home to Rick Stein at Bannisters
- ❖ Stunning infinity pool views

Location: Close to Nelson Bay, surrounded by water and a natural koala habitat. Distances: Beach 3km, Town centre 8km.

Property Features: Pool, Restaurant, Room service, Parking (free), 78 rooms.

Room Features: Air-conditioning, Balcony, Tea/coffee making facilities, Ironing facilities, Hair dryer.

Max Capacity: Paperbark/Ocean Deck/Luxury/Penthouse – 2, Paperbark Triple/Studio – 3.

[^]Price applies Sun-Thu nights.



COASTAL NEW SOUTH WALES ACCOMMODATION

BANNISTERS PAVILION, MOLLYMOOK



Classic

87 Tallwood Avenue, Mollymook
MAP PAGE 27

From **\$287***^

- ❖ Enjoy the rooftop pool and terrace
- ❖ Dine at the laid-back Rooftop Bar & Grill
- ❖ Make the most of complimentary bikes and easy beach access

Includes continental breakfast daily.

Location: Within walking distance of one of the south coast's most beautiful beaches. Distances: Beach 550m, Town centre 1.5km.

Property Features: Pet friendly, Guest lounge, Pool, Restaurant, Bar, Café, Bicycle hire, Parking, 35 rooms.

Room Features: Air-conditioning, Balcony, Tea/coffee making facilities, Refrigerator, Ironing facilities, Bathrobes, Hair dryer, Safe.

Max Capacity: Classic/Pavilion Penthouse – 2 adults/1 child.

^Price applies Sun-Thu nights.



BANNISTERS BY THE SEA, MOLLYMOOK



Ocean Deluxe

191 Mitchell Parade, Mollymook
MAP PAGE 27

From **\$499***^

- ❖ Panoramic ocean views
- ❖ Award winning restaurants by Rick Stein
- ❖ Unwind at Spa by the sea

Includes breakfast daily.

Location: Perched on a headland overlooking the Pacific Ocean and nestled against a natural eucalyptus nature reserve. Distances: Beachfront, Town centre 2.7km

Property Features: Pool, Restaurant, Bar, Parking, 34 rooms.

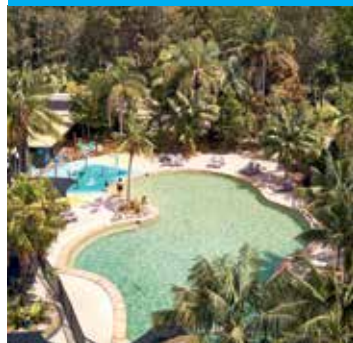
Room Features: Air-conditioning, Balcony, Ironing facilities, Bathrobe, Safe.

Max Capacity: Ocean Deluxe – 2

^Price applies Sun-Thu nights.



MURRAMARANG BEACHFRONT RESORT, SOUTH DURRAS



Forest Villa

106 Banyandah Street, South Durras
MAP PAGE 27

From **\$164***^

- ❖ Offers direct beachfront access within a stunning national park
- ❖ A variety of dining options including a poolside bar
- ❖ Kangaroos can be spotted lounging near cabins and on the beach

Location: Nestled between the bush and the beach just north of Batemans Bay on the NSW South Coast. Distances: Beachfront, Town centre 1.1km.

Property Features: Pool, Restaurant, Bar, Café, Guest laundry, Parking (free), EV charging, Pedal kart hire, 79 rooms.

Room Features: Air-conditioning, Furnished patio, Kitchen, Tea/coffee making facilities.

Max Capacity: Beach Villa – 3, Forest Villa – 4 adults or 2 adults/3 children, Garden Villa – 2 adults/2 children.

^Minimum 2 night stay applies. Price applies Sun-Thu nights.





Tinklers Wine, Pokolbin

Destination NSW

HUNTER VALLEY

The Hunter Valley is best known for its wine but there's so much more to this picturesque region. Just two hours by car from Sydney, you'll find beautiful scenery and charming villages. There's plenty to do with golf courses, day spas and more. The Hunter is the ultimate holiday destination for wine lovers with more than one hundred wineries and cellar doors to explore!

SEE

- See manicured gardens, hedge mazes, waterfalls, statues and murals at the beautiful Hunter Valley Gardens

DO

- Discover the historic and charming towns of Maitland, Paterson and Morpeth

EAT & DRINK

- Taste wines at well-established vineyards such as Tulloch and Lindeman's
- Sample the many cheeses available at the Smelly Cheese Shop, Pokolbin
- Take your tastebuds on a culinary journey at Circa 1876, Pokolbin

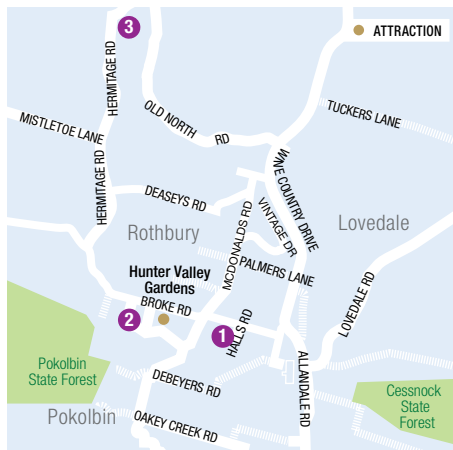
WHAT'S ON

Hunter Valley Wine & Beer Festival
11 July



Hunter Valley Gardens, Pokolbin

Destination NSW



REF.	HOTELS	PAGE
1	The Convent Hunter Valley	32
2	Spicers Guest House – Pokolbin	32
3	Spicers Vineyard Estate	32



MAXIMUM GROUP SIZE 11

SNAPSHOT TOUR

An ideal taste of what the Hunter Valley has to offer, perfect for those in the region for a limited amount of time. Visit two boutique wineries for private tasting sessions and conclude the tour with a cheese and wine matching experience.

Includes:

- VIP tastings at 2 wineries
- Chocolate and wine or cheese and wine matching experience
- Experienced and entertaining local guide
- Return transfers from selected Hunter Valley accommodation

Operator: Two Fat Blokes Gourmet Tours

Duration: 3 hours

Departs: Daily from Hunter Valley at 9:30am, 1:30pm

Not suitable for children under 18 yrs.

	Adult
Winery Tour	\$109*



SUNRISE HOT AIR BALLOON FLIGHT

Reach exciting new heights with a hot air balloon flight over the Hunter Valley, Australia's oldest wine region. Enjoy scenic views of the vineyards, mountain ranges and local wildlife as you drift through the valley at sunrise. Following the flight, passengers return to Blaxland Inn to enjoy a buffet breakfast with a glass of local sparkling wine.

Includes:

- Sunrise hot air balloon flight
- Buffet breakfast with a glass of local sparkling wine
- Digital photo package

Operator: Beyond Ballooning

Duration: 4 hours

Departs: Daily from Blaxland Inn approximately 1 hour prior to sunrise

Not suitable for children under 7 yrs.

	Adult	Child 7-12 yrs
Balloon Flight	\$329*	\$289*



PICNIC AMONG THE VINES

Enjoy a self-guided tour of the winery's museum, followed by a master class and premium tasting with an Audrey Wilkinson wine expert. Then, collect your bottle of handpicked wine along with a picnic hamper and select a scenic location within this 270 acre property to enjoy the picturesque view. Immerse yourself among the vines where you will feel as though you have the whole vineyard to yourself.

Includes:

- Self-guided museum tour
- Premium wine tasting
- Picnic hamper, bottle of wine and etched glassware

Operator: Audrey Wilkinson Winery

Duration: 2 hours

Departs: Daily from Audrey Wilkinson Winery at 10:30am, 12 noon, 1:30pm, 3pm

Not suitable for children under 18 yrs.

	Adult
Winery Tour	\$95*

*PRICES ARE A GUIDE ONLY, subject to change and availability and are in Australian Dollars. Prices are per person, unless otherwise specified and based on travel in low season. For full terms and conditions, refer to the Booking Conditions on the inside back cover of this brochure.

HUNTER VALLEY ACCOMMODATION

THE CONVENT HUNTER VALLEY



Deluxe Room

88 Halls Road, Pokolbin
MAP PAGE 31

From **\$283***[^]

- ❖ Peaceful retreat close to renowned Hunter Valley wineries
- ❖ Heritage architecture paired with refined comforts
- ❖ A restful base for wine tasting, dining and unhurried time in the valley

Includes full breakfast daily.

Location: Just two and a half hours from Sydney nestled in one of Australia's premier wine regions. Distances: Hunter Valley Gardens 3.5km, Cessnock 10.9km.

Property Features: Pool, Restaurant, Tennis court, Dry cleaning services, Parking (free), 19 rooms.

Room Features: Air-conditioning, Tea/coffee making facilities, Television, Ironing facilities, Bathrobes, Hair dryer, Safe.

Max Capacity: Deluxe/Superior – 2, Premier – 3.

[^]Price applies Sun-Thu nights.



FREE



SPICERS GUEST HOUSE – POKOLBIN



King

57 Ekerts Road, Pokolbin
MAP PAGE 31

From **\$428***[^]

- ❖ Spacious rooms with a charming thoughtful design
- ❖ A picturesque retreat set in the heart of an iconic wine region
- ❖ Enjoy Italian cuisine at éRemo Restaurant

Includes full breakfast daily.

Location: Nestled among vineyards and native bushland, the property is moments from renowned cellar doors and the Hunter Valley Gardens. Distances: Hunter Valley Gardens 2.5km, Cessnock 13.7km.

Property Features: Pool, Spa, Guest lounge, Restaurant, Bar, Tennis court, Bicycle hire, Parking (free), 45 rooms.

Room Features: Air-conditioning, Tea/coffee making facilities, Mini bar, Ironing facilities, Bathrobe, Hair dryer.

Max Capacity: King – 2, King Deluxe/Garden – 2 adults/1 child. Other room types also available.

[^]Price applies Sun-Thu nights.



FREE

SPICERS VINEYARDS ESTATE



King Spa

555 Hermitage Road, Pokolbin
MAP PAGE 31

From **\$534***[^]

- ❖ Beautifully appointed rooms with spa baths and an open fireplace
- ❖ Dine at Restaurant Botanica and enjoy modern Australian cuisine
- ❖ Set amongst an eight-acre private vineyard with exquisite gardens

Includes full breakfast daily.

Location: Located in the heart of the Hunter Valley, close to top wineries, distilleries and gourmet food producers. Distances: Hunter Valley Gardens 12km, Cessnock 23km.

Property Features: Pool, Spa, Guest lounge, Restaurant, Day spa, Bicycle hire, Parking (free), 13 rooms.

Room Features: Air-conditioning, Balcony, Spa bath, Tea/coffee making facilities, Mini bar, Ironing facilities, Bathrobes, Hair dryer.

Max Capacity: King Spa/King Terrace/Luxury Spa – 2, Vineyards House – 8.

[^]Price applies Sun-Thu nights.



FREE



Blue Mountains National Park

Tourism Australia

BLUE MOUNTAINS & BOWRAL

Home to the Three Sisters, the Blue Mountains feels like another world away, yet it's less than a two hour drive from Sydney. Just over an hour further on, get back to nature at Bowen Mountain.

Further south, Bowral in the Southern Highlands is a haven of elegance and country charm, celebrated for its manicured gardens, boutique shopping, and vibrant food and wine scene. Surrounded by rolling hills and seasonal blooms, this town is also a great base to explore local villages, country scenery and fascinating heritage.

SEE

- Admire stunning views from Wentworth Falls, Govetts Leap or Echo Point lookouts

DO

- Take a ride on the Railway, Skyway and Cableway at Scenic World
- Explore boutique shops and antique stores in Bowral's charming town centre

EAT & DRINK

- Indulge in local flavours at Bowral's acclaimed cafés and restaurants



Bowral

Destination NSW



REF.	HOTELS	PAGE
1	Ardour Milton Park Bowral	35
2	Comfort Resort Leura Gardens	34
3	Echoes Boutique Hotel, Katoomba	34
4	The Hydro Majestic Hotel, Medlow Bath	34
3	Lillanfels Blue Mountains Resort & Spa, Katoomba	35
5	Parklands Country Gardens and Lodges, Blackheath	35
6	Spicers Sangoma Retreat, Bowen Mountain	35



Tourism Australia

STARGAZING TOUR WITH AN ASTRONOMER

Embark on a captivating space journey led by an Astronomer in the timeless beauty of the World Heritage-listed Blue Mountains dark skies.

Includes:

- Captivating tour led by local Astronomer
- Laser guided constellation storytelling
- State-of-the-art telescope viewing of planets, moon and more
- Complimentary hot chocolate
- National park entry fees

Operator: Blue Mountains Stargazing

Duration: 1 hour 30 minutes

Departs: Daily from Wentworth Falls lookout



SCENIC WORLD BLUE MOUNTAINS

For an adventure like nowhere else, experience Scenic World at your own pace. From the world's steepest railway to the iconic Scenic Skyway and Cableway, from sandstone cliff tops to lush rainforest, explore it all with an Unlimited Discovery Pass. Leave to explore the National Park and come back in.

Includes:

- Unlimited travel on the Scenic Railway, Scenic Skyway, Cableway and Walkway

Operator: Scenic World Blue Mountains

Open: Mon to Fri: 10am – 4pm,
Sat to Sun: 9am – 5pm



BLUE MOUNTAINS E-BIKE TOUR

On this private fully guided, and beginner friendly soft off-road e-bike adventure, the Blue Labyrinth tour takes you through the lower Blue Mountains National Park. Ride easy dirt fire trails and be spoiled with views of sandstone cliffs, deep valleys and gorges, rivers, giant ancient eucalypt trees, flora and fauna. If you can ride a bike safely, you will love this!

Includes:

- Use of mountain e-bike, helmet and gloves
- Snacks and water • Rider safety, skill and trail briefing
- Accidental bike damage insurance • National park fees

Operator: Blue Mountains Biking Adventures

Duration: 4 hours

Departs: Mon to Fri from Glenbrook Train Station at 8am

Not suitable for children under 10 yrs. Other guided and self guided tours also available.

	Adult	Child 4-15 yrs
Stargazing Tour	\$87*	\$57*

	Adult	Child 3-15
Unlimited Discovery Pass	\$67*	\$48*

	Adult/Child
E-Bike Tour	\$385*^

^Price based on minimum 2 adults.

*PRICES ARE A GUIDE ONLY, subject to change and availability and are in Australian Dollars. Prices are per person, unless otherwise specified and based on travel in low season. For full terms and conditions, refer to the Booking Conditions on the inside back cover of this brochure.

BLUE MOUNTAINS ACCOMMODATION

COMFORT RESORT LEURA GARDENS



Standard

20-28 Fitzroy Street, Leura
MAP PAGE 33

From **\$185***

- ❖ Enjoy an outdoor heated pool and a BBQ area
 - ❖ Savour fresh, locally inspired cuisine at the on-site Fairways Restaurant and Bar
 - ❖ Perfectly positioned as a gateway to the Blue Mountains
- Includes continental breakfast daily.**

Location: In the heart of Leura, close to iconic Blue Mountains attractions. Distances: Town centre 2km, Three Sisters 6km.

Property Features: Solar heated outdoor pool, Guest lounge, Restaurant, Bar, Guest laundry, Parking (free), 89 rooms.

Room Features: Air-conditioning, Tea/coffee making facilities, Refrigerator, Ironing facilities.

Max Capacity: Standard/Garden View – 2.



THE HYDRO MAJESTIC HOTEL, MEDLOW BATH



Heritage

52-88 Great Western Highway, Medlow Bath
MAP PAGE 33

From **\$242****

- ❖ Iconic heritage hotel set in the spectacular Blue Mountains
 - ❖ Signature high tea and dining with panoramic valley views
 - ❖ A memorable escape for romantics, food lovers and nature seekers
- Includes full breakfast daily.**

Location: Located close to Katoomba and a short drive to Three Sisters and Echo Point. Distances: Town centre 6km, Three Sisters 13km.

Property Features: Restaurants (2), Bar, Café, Tennis court (full size), Guest lounge, Non smoking, 24 hour reception, Parking, 82 rooms.

Room Features: Air-conditioning (reverse cycle), Refrigerator, Tea/coffee making facilities, Ironing facilities, Hair dryer.

Max Capacity: Heritage/Heritage Valley View/Belgravia/Belgravia Valley View/Hargravia Valley View/Delmonte Valley/Delmonte Valley View – 2.

^Price applies Sun-Thu nights.



ECHOES BOUTIQUE HOTEL, KATOOMBA



Deluxe View

3 Lillianfels Avenue, Katoomba
MAP PAGE 33

From **\$512****

- ❖ Stunning panoramas and breathtaking views from every room
 - ❖ Dine on the escarpment edge overlooking the stunning Jamison Valley
 - ❖ Enjoy 5-star facilities at Lillianfels Resort & Spa, located next door
- Includes full breakfast daily.**

Location: In the heart of Katoomba and only a short walk to the iconic Echo Point Lookout (Three Sisters) and short drive to Katoomba town centre. Distances: Town centre 3km, Three Sisters 600m.

Property Features: Bar, Restaurant, Room service, Day spa, Reception (7am to 11pm), 14 rooms.

Room Features: Balcony, Tea/coffee making facilities, Bathrobes, Hair dryer, All rooms non smoking.

Max Capacity: Cliff View/Deluxe View – 2, Corner View Suite/Grand Deluxe View – 3 adults or 2 adults/2 children.

^Price applies Sun-Thu nights.



BLUE MOUNTAINS & BOWRAL ACCOMMODATION

PARKLANDS COUNTRY GARDENS AND LODGES, BLACKHEATH ♦♦♦♦♦



Loft

132 Govetts Leap Road, Blackheath
MAP PAGE 33

From **\$307***^

- ♦ Set within expansive gardens and manicured grounds with a private lake
 - ♦ Unwind and be pampered at the onsite Parklands Day Spa
 - ♦ Moments from classic Blue Mountains walks, including Govetts Leap
- Includes full breakfast daily.**

Location: In the quaint village of Blackheath in the Blue Mountains. Distances: Town centre 900m, Three Sisters 13.7km.

Property Features: Guest lodge, Day spa, Parking (free), 31 rooms.

Room Features: Air-conditioning, Tea/coffee making facilities, Refrigerator, Ironing facilities, Bathrobes, Hair dryer, Safe.

Max Capacity: Loft/Lakeside – 2, Garden Suite – 3.

^Price applies Sun-Thu nights.



FREE

LILIANFELS BLUE MOUNTAINS RESORT & SPA, KATOOMBA ♦♦♦♦♦



Deluxe Resort View

5-19 Lilianfels Ave, Katoomba
MAP PAGE 33

From **\$606***^

- ♦ Set amid two acres of curated gardens, overlooking spectacular scenery
 - ♦ Unwind, restore and elevate your senses at the Lilianfels Day Spa
 - ♦ Indulge in a High Tea experience and dine at the hatted Darley's Restaurant
- Includes full breakfast daily.**

Location: Located in the heart of the World Heritage-listed Blue Mountains National Park. Town centre 2km, Three Sisters 500m.

Property Features: Pools (2 – 1 heated, 1 indoor), Spa, Restaurants (2), Bar, 24 hour room service, Games room, Bicycle hire, Tennis court (full size), Day spa, Gym, Sauna, Guest lounge, Library, 24 hour reception, Non smoking, Parking (outdoor and undercover), 85 rooms.

Room Features: Air-conditioning, DVD player, Ironing facilities, Bathrobes, Hair dryer.

Max Capacity: Deluxe Resort View/Deluxe Spa Resort View/Deluxe Valley View – 2, Deluxe Twin Resort View – 4, Executive Resort View Suite/Grand Deluxe Resort View – 3 or 2 adults/2 children.

^Price applies Sun-Thu nights.



FREE

SPICERS SANGOMA RETREAT, BOWEN MOUNTAIN ♦♦♦♦♦



Lodge

70 Grandview Lane, Bowen Mountain
MAP PAGE 33

From **\$2107***^

- ♦ All-inclusive sanctuary amidst the pristine beauty of Bowen Mountain
 - ♦ Awarded two Michelin Keys
 - ♦ Intimate dining at the acclaimed, award-winning restaurant Amara
- Includes breakfast, lunch and dinner daily.**

Location: Situated in Bowen Mountain, surrounded by the beauty of the Blue Mountains. Distances: Town centre 1.5km, Three Sisters 70km.

Property Features: Pool, Day spa, Restaurant, Bar, Guest lounge, Sauna, Parking (free), 8 suites.

Room Features: Air-conditioning, Balcony, Patio, Tea/coffee making facilities, Mini bar, Ironing facilities, Bathrobes, Hair dryer.

Max Capacity: Lodge/Luxury Bush/Escarpment/Chief – 2.

^Price applies Sun-Thu nights.



FREE



ARDOUR MILTON PARK BOWRAL ♦♦♦♦♦



Garden Terrace

200 Horderns Road, Bowral
MAP PAGE 33

From **\$568***^

- ♦ Transformed interiors after a comprehensive estate-wide refurbishment
 - ♦ Horderns Restaurant with a renewed European-inspired approach
 - ♦ A dedicated wellness spa designed for rest, renewal and extended stays
- Includes full breakfast daily.**

Location: Set in a secluded woodland estate, just east of Bowral in the Southern Highlands. Distances: Town centre 7.7km.

Property Features: Pool (heated indoor), Day spa, Restaurant, Bar, Tennis court, Parking (free), 40 rooms.

Room Features: Air-conditioning, Tea/coffee making facilities, Refrigerator, Ironing facilities, Hair dryer.

Max Capacity: Garden Terrace – 2.

^Price applies Sun-Thu nights.



FREE



Australian War Memorial

Visit Canberra

CANBERRA

A vibrant multicultural city, Canberra tells the story of Australia. Discover attractions such as the Australian War Memorial, Parliament House and the National Museum of Australia. The kids will love Questacon – the National Science and Technology Centre. See how athletes train at the Australian Institute of Sport and explore a world in miniature at Cockington Green Gardens. Enjoy a relaxing cruise on Lake Burley Griffin, sample award winning wines at a boutique cellar door and tempt your tastebuds in one of Canberra’s many dining precincts.

SEE

- See the huge flag and mast of Parliament House from below – you can walk beneath it
- Check out the views from Red Hill Lookout or Mount Ainslie

DO

- Be moved by the Last Post Ceremony, held every afternoon at the Australian War Memorial

EAT & DRINK

- Treat yourself with a delicious dessert from Space Kitchen
- Dine at hip establishments in the Braddon foodie precinct

WHAT'S ON

Floriade

12 September to 11 October

Enlighten

27 February to 9 March

Canberra Balloon Spectacular

14 to 22 March



Floriade, Commonwealth Park

Visit Canberra

REF.	HOTELS
1	Crowne Plaza Canberra

PAGE	REF.	HOTELS
37	2	QT Canberra

PAGE
37

CANBERRA TOURS & ACCOMMODATION



PRIVATE AIRPORT TRANSFERS

Arrive in style with a private car transfer.

With a history of excellence in chauffeured limousines, Royale Limousines is the ultimate in luxury and style. Whether you are travelling for business or pleasure, you are always guaranteed first class service.

At Royale Limousines, the primary concern for all staff, from chauffeurs and coach drivers right through to office and reservations staff, is to ensure that you are not only well looked after, but treated to an experience that exceeds even your best expectations.

Operator: Royale Limousines

	Sedan 1 to 2 People	Premium Sedan 1 to 2 People
Inner City Transfer	\$128* [^]	\$165* [^]
Canberra Airport to/from Canberra CBD	\$156* [^]	\$203* [^]

[^]Price based on per vehicle, one way.



HIGHLIGHTS OF CANBERRA TOUR

Canberra's best day tour encompasses all the highlights of Canberra. Witness the wonderful views of Canberra and the region from the top of Mount Ainslie. Visit NCA Exhibition Centre. Be guided through the corridors of power at Australia's Parliament House. Survey the Parliamentary Triangle and its national institutions. Explore the Australian War Memorial and experience the moving Last Post Ceremony.

Includes:

- Admission to Old Parliament House, National Capital Exhibition and Australian War Memorial
- Expert local guide
- Transport by air-conditioned mini-van

Operator: Canberra Guided Tours

Duration: 8 hours

Departs: Daily from Jolimont Bus Centre and selected accommodation from 9:30am

	Adult	Child 8-12 yrs
Full Day Tour	\$189*	\$139*



CANBERRA WINE TOUR

A terrific full day tour, not only because of the magnificent wines you'll taste at a raft of cellar doors, but also for the beautiful rural landscapes through Canberra's wine region.

Shiraz is the flagship for reds and Riesling the flagship for whites in this cool climate wine region, as well as a multitude of other varieties; viognier, pinot noir, and cabernet, distinguished wine aficionados and novices alike are sure to find something to their taste. Tasting fees are not included.

Includes:

- Air-conditioned mini-van
- Expert local guide

Operator: Canberra Guided Tours

Duration: 7 hours

Departs: Daily on demand from Canberra at 10am

Not suitable for children under 18 yrs.

	Adult
Winery Tour	\$239*

CROWNE PLAZA CANBERRA



1 Binara Street, Canberra
MAP PAGE 36

From **\$269***

- ❖ Spacious rooms overlooking Canberra city or tranquil gardens
- ❖ Dedicated quiet zone rooms
- ❖ Great for couples

Location: In the heart of the CBD within walking distance of the city's shopping, dining and entertainment districts. Distances: City centre 750m, Capital Hill 3.4km, Airport 6.5km.

Property Features: Pool (outdoor, seasonal), Restaurant, Bar, 24 hour room service, Fitness centre, Sauna, Bicycle hire, 24 hour reception, Parking (extra charge), 296 rooms.

Room Features: Air-conditioning, Tea/coffee making facilities, Mini bar, Cable TV, Ironing facilities, Safe.

Max Capacity: Standard/Deluxe – 3 adults or 2 adults/2 children.



QT CANBERRA



1 London Circuit, Canberra
MAP PAGE 36

From **\$239***

- ❖ Luxury designer hotel near Lake Burley Griffin, dining and shopping
- ❖ Sophisticated restaurant, members lounge and speakeasy bar
- ❖ Rooms feature designer décor and modern conveniences

Location: Across the lake from Canberra's national attractions in the cultural arts precinct of New Acton. Close to restaurants and bars in central Canberra. Distances: City centre 1km, Capital Hill 2.5km, Airport 7.5km.

Property Features: Sundeck, Restaurant, Bar, Bicycle hire, Laundry/dry cleaning service, Lift, 24 hour reception, Non smoking, Parking (undercover – extra charge), 205 rooms.

Room Features: Air-conditioning, Balcony, Tea/coffee making facilities, Mini bar, Cable TV, Ironing facilities, Bathrobes, Hair dryer.

Max Capacity: QT Twin – 2, QT King/QT Superior King – 3.



*FROM PRICES ARE A GUIDE ONLY, subject to change and availability and are in Australian Dollars. Unless otherwise specified, prices for day tours and transfers are per person and prices for accommodation are per room per night for 2 people based on the lowest room category. All prices based on travel in low season. For full terms and conditions, refer to the Booking Conditions on the inside back cover of this brochure.



Kingston

NORFOLK ISLAND

A subtropical paradise with a fascinating history and culture, Norfolk Island offers excitement, fun, relaxation and adventure.

A harsh penal colony from 1788 to 1854, Norfolk Island today is home to the descendants of the Bounty Mutineers whose warm hospitality welcomes you to the island. Snorkel and dive the crystal clear water, play a round of golf and even learn how to hula.

SEE

- Watch the sun rise or set from Mount Pitt Lookout

DO

- Visit the beautiful St Barnabas Chapel and explore the World Heritage listed convict ruins of Kingston

EAT & DRINK

- Enjoy a progressive dinner and dine in local homes
- Try an island fish fry – fresh fish, traditional salads and island style desserts

WHAT'S ON

Food lovers week
6 to 14 May

Bounty Day
8 June



REF.	APARTMENTS	PAGE	REF.	APARTMENTS	PAGE
1	Aloha Apartments	39	4	Governor's Lodge Resort Hotel	40
2	Broad Leaf Villas	39	5	Seaview Norfolk Island	40
3	Cumberland Resort & Spa	40	6	Sunset Villa	40

NORFOLK ISLAND TOURS & ACCOMMODATION



SIMONS WATER CAR RENTALS

Locally owned and operated, Simons Water Rentals takes the hassle out of your island car hire experience. Enjoy the convenience of modern automatic 5 door vehicles with unlimited kilometres, giving you the freedom to explore at your own pace. For added ease, your rental can be picked up and dropped off at the airport or directly at your accommodation, ensuring a smooth start and finish to your getaway.

Includes:

- Unlimited kilometres

Operator: Simons Water Rentals

	1 Day
Standard Automatic	\$90*^
SUV Automatic	\$125*^

^Minimum age for drivers is 21 yrs. All prices are based on a 24 hour rental period. All hires are subject to Simons Water Rentals 2026/27 rental terms and conditions.



FARM AND INDUSTRY TOUR

Meet the Shire Horses, watch a draft horse demonstration and learn about farming from a bygone era with a local character and horse trainer on this afternoon tour. Visit a state-of-the-art palm nursery that export palms to the world market. Enjoy a cuppa as you wander around the home of Bounty Mutineer Descendants. Stop at the local mill before heading to the Liqueur Factory for a liqueur tasting.

Includes:

- Local guide and commentary
- Return transfers from selected city departure points

Operator: Baunti Tours

Duration: 3 hours

Departs: Friday from Norfolk Island at 1pm

	Adult	Child 4-12 yrs
Day Tour	\$70*	\$35*



NIGHT ON THE BOUNTY DINNER & SHOW

Come and experience a night on the Bounty. This world famous story will be told by a cast of actors. You will be taken on a journey from England to Tahiti. This fun, factual and interactive dinner show will tell the story of life that led to the Mutiny on The Bounty. Enjoy a night of feasting, frivolity and lots of laughs. The cast of this amazing feature show will have you enthralled as you sail with Captain Bligh and the Mutineers from the famous Bounty.

Includes:

- Three course dinner
- Local guide and commentary

Operator: Baunti Tours

Duration: 3 hours

Commences: Tuesday at 6:30pm, Norfolk Island Golf Club

	Adult	Child 4-12 yrs
Dinner Show	\$100*	\$50*

ALOHA APARTMENTS



Aloha Standard 1 Bedroom

Taylor's Road, Norfolk Island

MAP PAGE 38

From **\$260***

- ❖ Outdoor barbecues, pool and undercover seating
- ❖ Spacious self-contained apartments great for couples, family and friends
- ❖ Perfectly located in Burnt Pine town centre

Location: In the heart of Burnt Pine town centre within walking distance of the supermarket, cafés, restaurants and clubs. Distances: Beach 3km, Town centre 100m, Airport 1.2km.

Property Features: Pool, Children's playground, Café, Barbecue area, Manned reception, Departure lounge, Guest lounge, Guest laundry, Non smoking, Free airport transfers, 34 rooms.

Room Features: Fan, Patio, Kitchen with microwave, Tea/coffee making facilities, Ironing facilities, Hair dryer, Umbrella, Picnic basket, Torch.

Max Capacity: Aloha Standard 1 Bedroom/Aloha Deluxe 1 Bedroom – 2, Aloha Standard 2 Bedroom/Aloha Deluxe 2 Bedroom – 4.



***FROM PRICES ARE A GUIDE ONLY**, subject to change and availability and are in Australian Dollars. Unless otherwise specified, prices for day tours and transfers are per person and prices for accommodation are per room per night for 2 people based on the lowest room category. All prices based on travel in low season. For full terms and conditions, refer to the Booking Conditions on the inside back cover of this brochure.

BROAD LEAF VILLAS



1 Bedroom Superior Villa

154 Taylor's Road, Norfolk Island

MAP PAGE 38

From **\$404*^**

- ❖ Stylish and freshly renovated Villas with lush garden and valley views
- ❖ Perfect location, walking distance to town and on the way to Kingston
- ❖ Small property vibes with only 6 Villas – relaxing and peaceful

Includes use of car hire for duration of stay (conditions apply).

Location: In the upper reaches of Watermill Valley, located in the heart of town and close to Norfolk Island's national parks and beaches. Distances: Beach 2km, Town centre 1.5km, Airport 2.2km.

Property Features: Barbecue facilities, Guest laundry, Non smoking, 6 villas.

Room Features: Balcony, Fan, Heating, Tea/coffee making facilities, Kitchen, Ironing facilities, Hair dryer.

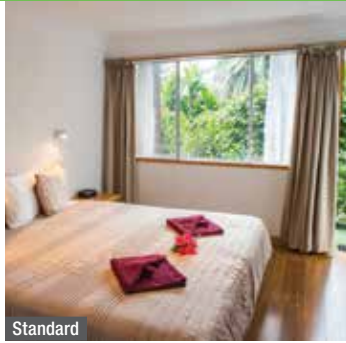
Max Capacity: 1 Bedroom Superior Villa/1 Bedroom Deluxe Villa – 3, 2 Bedroom Deluxe Villa – 5.

^Minimum 2 night stay applies.



NORFOLK ISLAND ACCOMMODATION

SEAVIEW NORFOLK ISLAND



Standard

159 Taylors Road, Norfolk Island
MAP PAGE 38

From **\$130***[^]

- ❖ Stunning ocean and valley views
- ❖ A short walk to the town centre
- ❖ Self-contained cottages suitable for families and groups

Includes half day island tour.

Location: Centrally located, just a short walk to shopping and dining options and a few minutes' drive from the Kingston historical area and beaches. Distances: Beach 3km, Town centre 1.6km, Airport 2.3km.

Property Features: Pool, Gym, Guest lounge, Guest laundry, Free airport transfers, 18 rooms.

Room Features: Fan, Balcony, Tea/coffee making facilities, Kitchen (1 and 2 Bedroom), Docking station, Ironing facilities, Hair dryer, All rooms non smoking.

Max Capacity: Standard/Standard Ocean View/Studio with Ocean View/Studio Ocean View with Kitchenette – 2, 1 Bedroom Garden View Self Contained Cottage/1 Bedroom Ocean View/1 Bedroom Ocean View Cottage – 3, 2 Bedroom Ocean View Cottage – 4.

[^]Minimum 2 night stay applies.



FREE

CUMBERLAND RESORT & SPA



1 Bedroom Executive Spa Villa

46 Taylors Road, Norfolk Island
MAP PAGE 38

From **\$380***[^]

- ❖ Self-contained apartments perfect for groups and families
- ❖ Each room has its own ensuite with spa bath or massage spa shower
- ❖ Sunny, spacious verandahs with private barbecues

Includes breakfast hamper, seasonal fruit on arrival and car hire rental (conditions apply).

Location: Just a short stroll to the shops, restaurants and minutes to the beach and golf course. Distances: Beach 1km, Town centre 300m, Airport 1.9km.

Property Features: Swim spa pool (heated), Restaurant (adjacent to resort), Day spa, Barbecue area, Sauna, Tennis court (off-site), Movie library, Guest laundry, 11 rooms.

Room Features: Fan, Heater (gas), Tea/coffee making facilities, Kitchen with dishwasher, Private barbecue, Cable TV, DVD player, Ironing facilities, Electric blankets, Massage spa shower, Spa bath (most rooms), Heated towel rails, Hair dryer.

Max Capacity: 1 Brm Executive Spa Villa/1 Brm Romantic Spa Villa – 2, 2 Brm Executive Spa Villa/2 Brm Romantic Spa Villa – 4, 3 Brm Executive Spa Villa – 6, 4 Brm Cumberland Spa Villa – 8, 5 Brm Executive Spa Villa – 10.

[^]Minimum 2 night stay applies.



FREE

GOVERNOR'S LODGE RESORT HOTEL



Standard Cabin

30 Queen Elizabeth Avenue, Norfolk Island
MAP PAGE 38

From **\$294***[^]

- ❖ Situated on 12 acres of landscaped sub-tropical gardens
- ❖ Cabin style accommodation with balcony
- ❖ Dine at the laid-back Baileys restaurant

Location: Centrally located with a short walk to cafés, restaurants and shops in Burnt Place. Distances: Beach 3.4km, Town centre 1km, Airport 2km.

Property Features: Pool, Spa (heated), Restaurant, Bar, Café, Guest lounge, Guest laundry, Parking, Non smoking, 55 rooms.

Room Features: Balcony, Tea/coffee making facilities, Kitchenette with microwave, Ironing facilities, Hair dryer.

Max Capacity: Standard Cabin/Deluxe Cabin – 3.

[^]Minimum 3 night stay applies.



FREE

SUNSET VILLA



Sunset Villa

176 Anson Bay Rd, Norfolk Island
MAP PAGE 38

From **\$700***[^]

- ❖ Unmatched coastal views from the private retreat
- ❖ Luxury villa with private pool
- ❖ Complimentary car hire (conditions apply)

Location: Set on 18 acres of farmland, on the pristine western coast of Norfolk Island. Distances: Beach 1.5km, Town centre 4.9km, Airport 8km.

Property Features: Library, Pool, Guest laundry, 24 hour reception, Ironing facilities, Parking (free), Free airport transfers, 1 room.

Room Features: Private pool, Patio, Full cooking facilities, Tea/coffee making facilities, Refrigerator, Television, Laundry facilities, Bathrobes, Hair dryer.

Max Capacity: Sunset Villa – 2.



FREE



Blinky Beach

Destination NSW/Tom Archer

LORD HOWE ISLAND

Escape to Lord Howe Island, a UNESCO World Heritage paradise known for its rainforest, crystal-clear waters and sheer volcanic peaks. Snorkel vibrant reefs filled with rare marine life, paddle on the calm ocean waters, take a dip in the surf at Blinky Beach and soak up unforgettable views along beautiful walking trails.

SEE

- Go birdwatching and have the opportunity to spot more than 130 recorded species

DO

- Snorkel pristine reef, home to colourful fish and turtles
- Walk the Valley of the Shadows and see groves of Kentia palms and Banyan trees
- Play a round at one of the most picturesque courses in Australia, Lord Howe Island Golf Club

EAT & DRINK

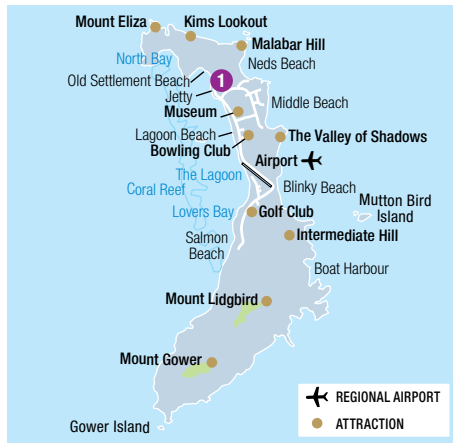
- Be sure to dine on freshly-caught Kingfish, you'll find it on almost every menu

WHAT'S ON

Dark Sky Festival
16 to 23 May

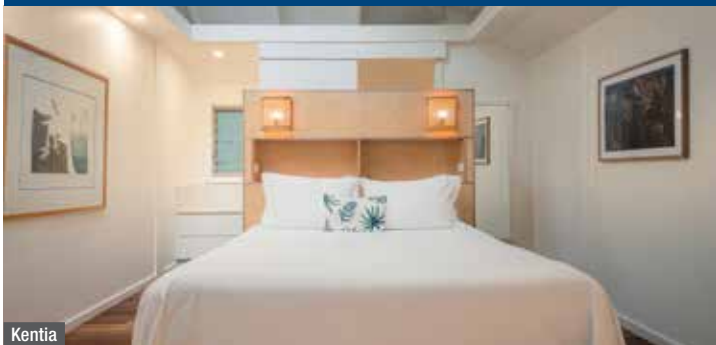


Lord Howe Island



REF.	HOTELS	PAGE
1	Arajilla Retreat	41

ARAJILLA RETREAT



Kentia

Old Settlement Beach, Lord Howe Island
MAP PAGE 41

From **\$1300***

- ❖ Renowned for warm and friendly service
- ❖ Accommodation with fully equipped kitchens and barbecues
- ❖ Luxury, spacious suites with private decks nestled among the forest

Includes light breakfast replenished daily in the suites, lightly stocked pantry and fridge, use of bicycles and snorkelling equipment and return airport transfers.

Location: Perfectly positioned just behind Old Settlement Beach. Distances: Beach 100m, Shop 800m, Airport 3km.

Property Features: Bar, Daily housekeeping, Use of bicycles, Use of snorkelling equipment, 12 suites.

Room Features: Air-conditioning, Tea/coffee making facilities, Ironing facilities, Bathrobes, Hair dryer, Safe.

Max Capacity: Kentia/Banyan – 2, 2 Bedroom Arajilla – 4.



*FROM PRICES ARE A GUIDE ONLY, subject to change and availability and are in Australian Dollars. Prices are per room per night for 2 people, unless otherwise specified and based on the lowest room category for travel in low season. For full terms and conditions, refer to the Booking Conditions on the inside back cover of this brochure.



ACCOMMODATION INDEX

SYDNEY

A by Adina Sydney	20
Ace Hotel Sydney	23
Adina Apartment Hotel Bondi Beach, Sydney	26
Adina Apartment Hotel Sydney, Town Hall	22
Amora Hotel Jamison Sydney	23
Crown Towers Sydney	24
Crowne Plaza Sydney, Darling Harbour	22
Four Seasons Hotel Sydney	24
Furama Darling Harbour	20
Holiday Inn Potts Point Sydney	20
Intercontinental Sydney	24
Metro Aspire Hotel Sydney	20
Metro Hotel Marlow Sydney Central	21
Ovolo Woolloomooloo	25
Paradox Sydney	25
PARKROYAL Darling Harbour	22
Rydges Australia Square	21
Rydges Cronulla Beachside	26
Rydges World Square Sydney	21
Shangri-La, Sydney	25
Spicers Potts Point	23
Vibe Hotel Sydney	21

Vibe Hotel Sydney Darling Harbour	23
Wildlife Retreat at Taronga	26

COASTAL NEW SOUTH WALES

Angourie Resort Yamba	28
Bannisters by the Sea, Mollymook	30
Bannisters Pavilion, Mollymook	30
Bannisters Port Stephens	29
Discovery Parks – Byron Bay	28
Mantra Nelson Bay	29
Murramarang Beachfront Resort, South Durras	30
Sails Port Macquarie	28

HUNTER VALLEY

The Convent Hunter Valley	32
Spicers Guest House – Pokolbin	32
Spicers Vineyards Estate	32

BLUE MOUNTAINS & BOWRAL

Ardour Milton Park Bowral	35
Comfort Resort Leura Gardens	34
Echoes Boutique Hotel, Katoomba	34

The Hydro Majestic Hotel, Medlow Bath	34
Lillanfels Blue Mountain Resort & Spa, Katoomba	35
Parklands Country Gardens and Lodges, Blackheath	35
Spicers Sangoma Retreat, Bowen Mountain	35

CANBERRA

Crowne Plaza Canberra	37
QT Canberra	37

NORFOLK ISLAND

Aloha Apartments	39
Broad Leaf Villas	39
Cumberland Resort & Spa	40
Governor's Lodge Resort Hotel	40
Seaview Norfolk Island	40
Sunset Villa	40

LORD HOWE ISLAND

Arajilla Retreat	41
------------------------	----



Cape Byron Lighthouse, Byron Bay

Please read these Booking Conditions carefully as they apply to all bookings with Viva Holidays.

HOW TO BOOK

Contact your ATIA travel agent and request a reservation. All verbal quotes provided are an estimate only and subject to change until confirmed in writing.

PRICES & CONDITIONS

This brochure was produced on 19 February 2026. Unless otherwise stated, prices are in Australian dollars and include GST where applicable. All prices are subject to availability, subject to change and can be withdrawn or varied without notice. Prices are to be used as a guide only. Accommodation prices are based on the lowest room category in low season. All other prices are based on travel in low season. Some prices are based on dynamic rates, which means the price may be higher or lower than the advertised price if the price has been varied by the supplier after this brochure was printed. Price changes may occur by reason of matters outside our control which increase the cost of the Product or Service. Such factors include (without limitation) adverse currency fluctuations, fuel surcharges, or increase to taxes. Surcharges and minimum stays may apply due to demand, Christmas and New Year's Eve, school and public holidays, special events and other circumstances. All prices are the lowest available prices at the time of print and are a guide only. Please check all prices, availability, fees, conditions and information with your travel agent before booking.

If we must change any part of your booking for reasons beyond our control, for example, an Accommodation Supplier overbooks accommodation, or if there is an increase in taxes or Supplier charges, we will notify you. If any such changes result in your holiday costing more or otherwise being materially different from that originally booked, you may cancel the booking and we will refund any monies already paid less any charges levied by Suppliers.

PRICES DO NOT INCLUDE

Anything not specifically indicated as being an inclusion.

OMISSIONS & ERRORS

While every effort is made to ensure the accuracy and currency of the information in the brochures, errors or omissions may occur. All errors and omissions identified post the date of publication are notified to our retail partners to advise you. Please check with your agent for all up-to-date corrections, including prices and inclusions.

DEPOSITS & FINAL PAYMENTS

Deposit

A minimum non-refundable deposit of \$55 per person is payable within 7 days of confirmation of your booking. You will be notified at the time of booking if any additional deposit is required. All deposits are non-refundable for changes of mind or cancellations by you (subject to your rights under the Australian Consumer Law).

Final Payment

Final payment of your holiday cost is required no later than 30 days prior to departure or by sale end date or by the payment deadline specified in individual package conditions, whichever is earlier. Some services may require full payment at the time of booking. For bookings made less than 31 days prior to travel, full payment of holiday cost is required at the time your booking is confirmed.

Please ensure payments are made by the due dates. If this does not happen, our system will automatically cancel the booking without notice or liability to you.

Only upon payment of the full cost of your holiday do you have a final booking with the Supplier of the relevant good and/or service. In arranging your booking, Viva Holidays is acting as the agent of the Supplier of the relevant Product and at no time do you have a contract with Viva Holidays.

CREDIT & DEBIT CARD SURCHARGES

A fee will apply for payments made by debit and credit cards. Fees may vary depending on card type. Please check this fee with us or your travel agent when booking.

FEES

Amendment Fees

If you wish to change your booking prior to departure, an amendment fee of \$30 will be charged if the overall value of the booking remains the same or decreases, in addition to any fees imposed by the Supplier of each service booked.

Late Booking Fees

A fee of \$30 will be charged for all bookings made less than 7 days prior to travel.

All fees can be varied without notice.

CANCELLATIONS & REFUNDS

Prior to Final Payment

Your deposit is forfeited.

After Final Payment

There will be no refund of your deposit, in addition to any fees imposed by the Supplier, which may be up to 100% of monies paid.

After Travel

There will be no refund if you cancel your booking once travel has commenced. There will be no refund for unused services, except for OPEN DATED services where the service was not booked with the Supplier. Requests for refunds received more than 6 months after departure date will not be accepted.

Should a refund after departure be approved, a \$110 refund processing fee will apply.

RESPONSIBILITY

Viva Holidays acts as an agent for the Suppliers (transport, tour, event or accommodation providers) who provide the various goods and/or services (Products). All bookings are subject to the terms and conditions and limitations of liability imposed by each Supplier. It is therefore important for you to obtain and read the applicable Supplier's terms and conditions as they may limit or exclude their liability to you.

In producing this brochure, we have used information provided by Suppliers. Irrespective of any measures taken by us to ensure the information contained in this brochure is accurate at the time of printing, Viva Holidays disclaims and will be exempt from liability in respect of anything misleading, false, incomplete or inaccurate and any errors, misdescription and all associated disappointment, loss, expense, damage, inconvenience, delay, death, shock, illness or injury, however caused.

Viva Holidays does not control the manner in which Products featured within this brochure are provided. Viva Holidays disclaims and will be exempt from liability for anything to do with the supply of such Products. This includes liability (whether as a matter of contract, tort, statute, restitution, or otherwise) for any direct, indirect or consequential loss, liability, claim, cost, expense, proceeding, demand, penalty, disappointment, death, injury, illness, shock, inconvenience or delay. This limitation of liability also applies irrespective of the cause, including negligence of us or a Supplier, withdrawal, cancellation or failure to provide a Product, delay, any variation in the Product, the provision of substitute Products or a change in the Supplier. Without limitation, Viva Holidays will not be responsible if the Product is not available due to inclement weather conditions or other acts of God, civil disturbances, fire, floods, acts of Government or any other authorities, accident to or failure of machinery or equipment or industrial action.

MAPS & PHOTOGRAPHS

The maps in this brochure are intended as a guide only and are not to scale. They do not necessarily reflect actual routings or accommodation or attraction locations. Accommodation room photographs are representative only and actual rooms occupied may vary in decor and inclusions from those shown.

Some images used in this brochure are supplied courtesy of tourist bureaus, hotels, tour operators, Destination NSW, Cessnock City Council, Tourism Australia, Visit Canberra, Anna Kucera, Caue Zanella, Chris Ersek, Craig Parry Photography, Dallas Kilponen, David Lip Photography, Dick Sweeney, Duncan Wilson, Easton Chang, Eugene Hyland, Filippo Rivetti, Geoff Lung, Grant O'Loughlan, Hamilton Lund, Isaac Brown, Janil Perez, Jay Evans, Jem Cresswell, John Kung, John Montesi, Kirk Maclean, Laurie Goodridge, Lawrence Furzey Photography, Luis Cristofori, Mark Lane, Mauro Risch, Merch Hub, Michael Mann, Miles Pritchard, Myra Gossow, Rawdon Stradher, Richard Weinstein, Sue Stubbs, Tom Archer and VRX Studios.

PRODUCT DESCRIPTIONS

Product descriptions and accommodation ratings featured in this brochure are provided by the individual Suppliers. Facilities, features or ratings are subject to change at any time. Tours may not operate on certain dates and durations and departure times are approximate only. You should check at the time of booking for any changes to published information of which we may be aware.

BONDS

Bonds or credit card imprints are required by most Suppliers at the time of check-in to cover incidentals and fees not included in your holiday cost.

TRANSFERS & TOURS

Some Accommodation Suppliers provide courtesy transfers to/from the airport. It is essential that these transfers are pre-booked. Some Tour Suppliers provide complimentary pick up and return to your holiday accommodation and require a minimum number of passengers to operate. If minimum numbers are not achieved tours may be cancelled at short notice. Additionally, some Suppliers reserve the right to cancel departures for other reasons, including bad weather. Some tours and itineraries may also vary and attractions may be substituted due to seasonal conditions. Viva Holidays will not be held liable for a service variation, cancellation, delay or withdrawal, or a Supplier's failure to notify you. A full refund applies for the cancelled tour.

TRAVEL INSURANCE

We strongly recommend you take out appropriate travel insurance to cover your travel arrangements.

PRIVACY

Viva Holidays collects information about you (including health information where necessary) to provide products and services to you, process your travel arrangements, facilitate your participation in loyalty programs and conduct marketing activities and market research. If the information is not provided, Viva Holidays may not be able to provide the Service requested. Viva Holidays may disclose your personal information to its related companies, carriers, travel service providers, organisations which provide services to Viva Holidays (more details are available in our Privacy Statement on our website vivaholidays.com.au) and various law enforcement agencies, airports and governments around the world for security, customs and immigration purposes. You may gain access to the information Viva Holidays holds about you by contacting our Privacy Officer in writing at 179 Normanby Road, South Melbourne VIC 3205 Australia or on privacyofficer@vivaholidays.com.au.

MONIES NOT HELD ON TRUST

All monies paid by you to us will be the property of Viva Holidays and will be a debt due and payable to the relevant Supplier (contingent on availing) once the services to which the money relates have been availed, or the relevant booking is cancelled (subject to cancellation fees). You agree and acknowledge that such monies will not be held by Viva Holidays on trust for or on behalf of you, and we may hold such monies in any account as we see fit, including with our own and/or other customer monies.

GOVERNING LAW

These conditions are governed by the laws of Victoria, Australia and any action arising under them or in any way connected with a booking may be brought only in a court in Victoria, Australia, subject to any law which is expressly inconsistent with this.

You acknowledge that you are 18 years of age or older and that you understand and agree with the above terms and conditions and our Privacy Policy. Please read our full booking terms and conditions at vivaholidays.com.au/policies/booking-conditions.



SYDNEY'S MOST ICONIC HARBOUR CRUISE EXPERIENCE

Experience the very best of Sydney Harbour with Captain Cook Cruises. Enjoy unforgettable dinner and lunch cruises, stunning sightseeing journeys, and thrilling wildlife and whale watching adventures.



CIRCULAR QUAY WHARF 6 | DARLING HARBOUR KING ST WHARF 1



helloworld
TRAVEL
THE TRAVEL PROFESSIONALS



In store



13 14 15



helloworld.com.au

